

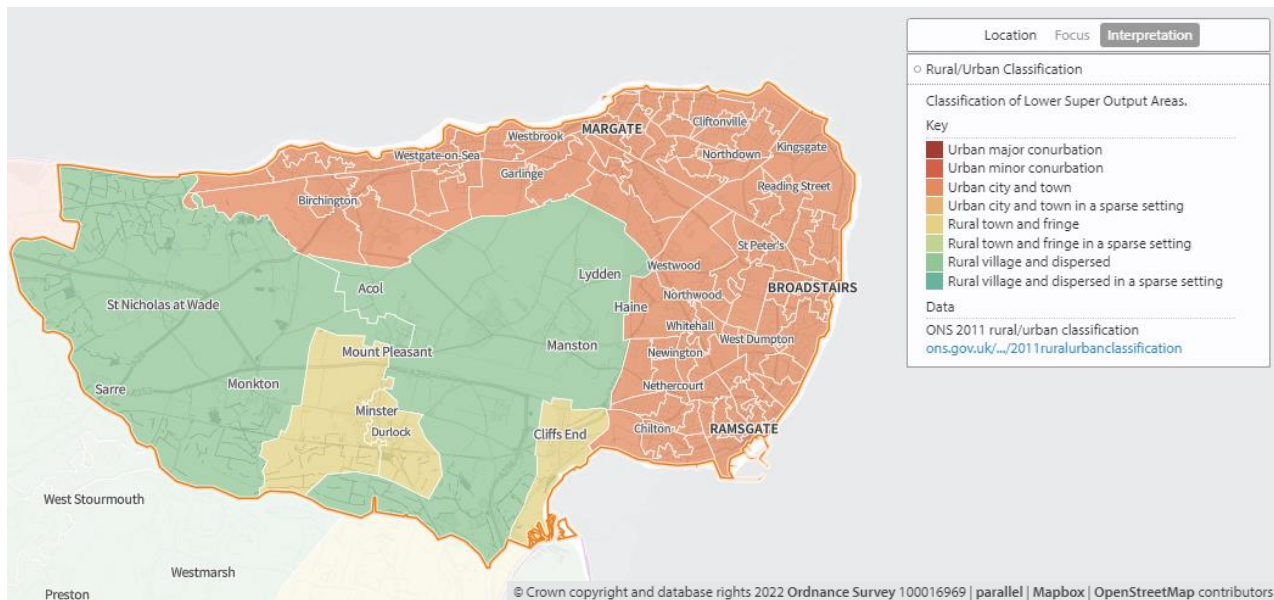
17 Thanet Council Locality

1. Key Facts

The Thanet locality used in this PNA is co-terminus with Thanet district council. It is situated on the north-eastern tip of Kent, it is predominantly coastal, with north, east and southeast facing coastlines, and is bordered by the Canterbury locality to the west and the Dover locality to the south. The main towns are Margate, Ramsgate and Broadstairs situated on the coast.

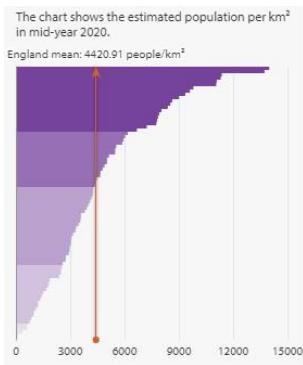
Urban/Rural classification

Map 171. Rural/urban classification of lower super output areas

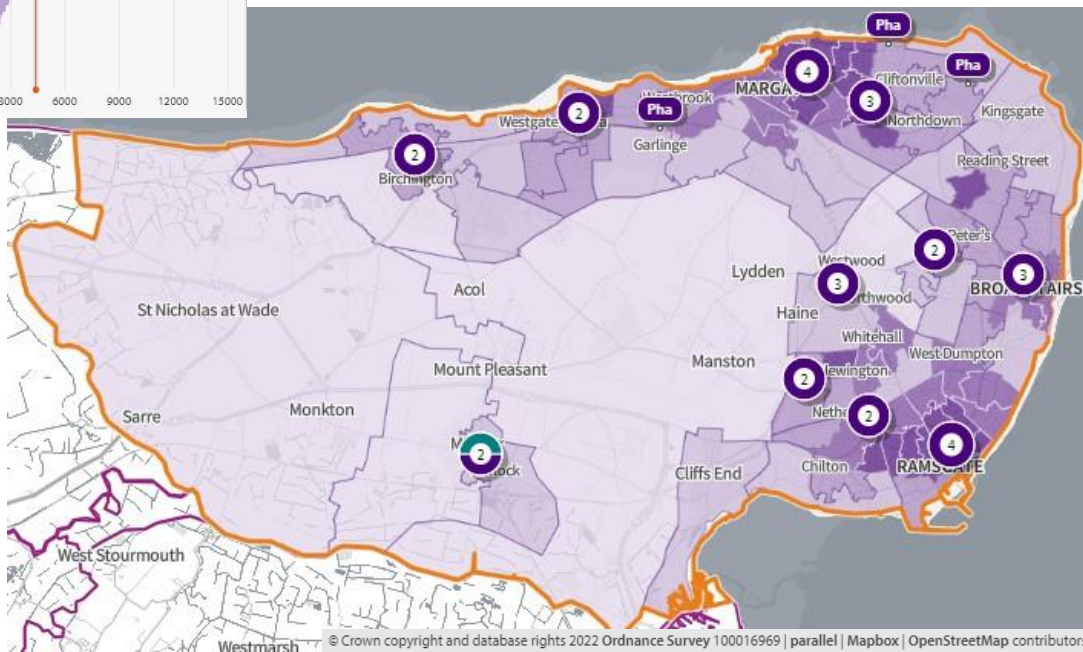


Population

Map 172. Population density of lower super output areas overlaid with locations of pharmacies and dispensing doctors



Total population = 141,458



Deprivation

Map 173, below, shows the areas of deprivation in the Thanet locality. Thanet is ranked 1st out of Kent's 12 districts for deprivation. Deprivation is relatively high across the district with a few small pockets of low deprivation, mostly around Broadstairs. There is a relatively large cluster of highly deprived areas in and around Margate. 18 LSOAs are within the top 10% most deprived areas in England. Employment and educational attainment rates are the lowest in Kent, significantly lower than the Kent average ⁽⁶³⁾ ⁽⁶⁴⁾.

Map 173. Deprivation of lower super output areas overlayed with locations of pharmacies and dispensing doctors

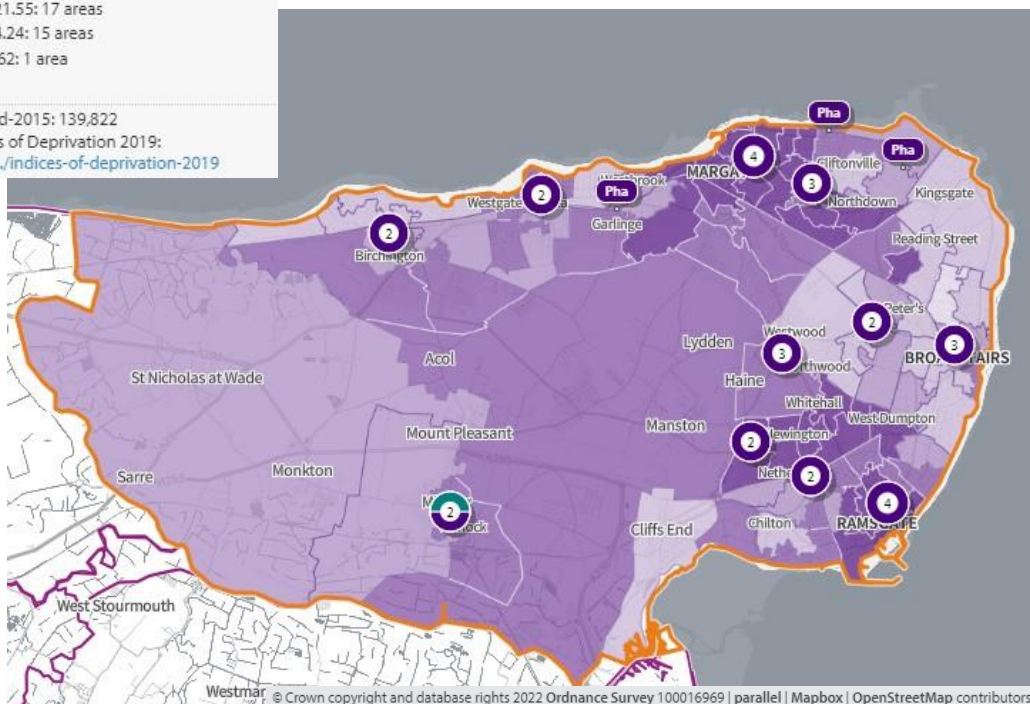
Values for LSOAs within the selected boundary are shown. The larger the value and the deeper the purple, the greater the deprivation.

The colours represent the quintiles:

- 33.26 to 92.73: 29 areas
- 21.56 to 33.25: 22 areas
- 14.25 to 21.55: 17 areas
- 8.63 to 14.24: 15 areas
- 0.54 to 8.62: 1 area

Data

Population mid-2015: 139,822
 English Indices of Deprivation 2019:
www.gov.uk/.../indices-of-deprivation-2019



Language

English is the main language for all people aged 16 or over in 95% of households in the district. 2.8% of households have no people with English as the main language ⁽²⁾.

House ownership

62% of houses are owned either outright (33%) or with a mortgage (29%). The average number of occupants per household is 2.2, slightly lower than the Kent average of 2.4 ⁽²⁾.

Age

The average age of Thanet district residents is 43.2, higher than the Kent average of 41.4. 24.1% of the population is over 65 and 18.9% 0-15⁽²⁾. Life expectancy at birth is the lowest of all Kent districts - 76.5 for males and 81.5 for females⁽⁴⁶⁾.

Economy

By industry, the top three employers in the Thanet district are human health and social work activities (20.2%), wholesale and retail trade (16.7%), and education (13.1%)⁽¹⁵⁾. Thanet has a much higher proportion of employees working in human health and social work activities compared to the Kent average (20.2% vs 13.3%)⁽¹⁵⁾. The proportion of jobs in human health and social work activities (20.2%) is the highest for this industry in Kent and only Ashford matches Thanet for the highest proportion of jobs in a single industry⁽¹⁵⁾.

Car ownership

30% of households in Thanet district do not have a car or van in the household. This is the highest proportion of all Kent districts⁽¹³⁾.

Care Homes

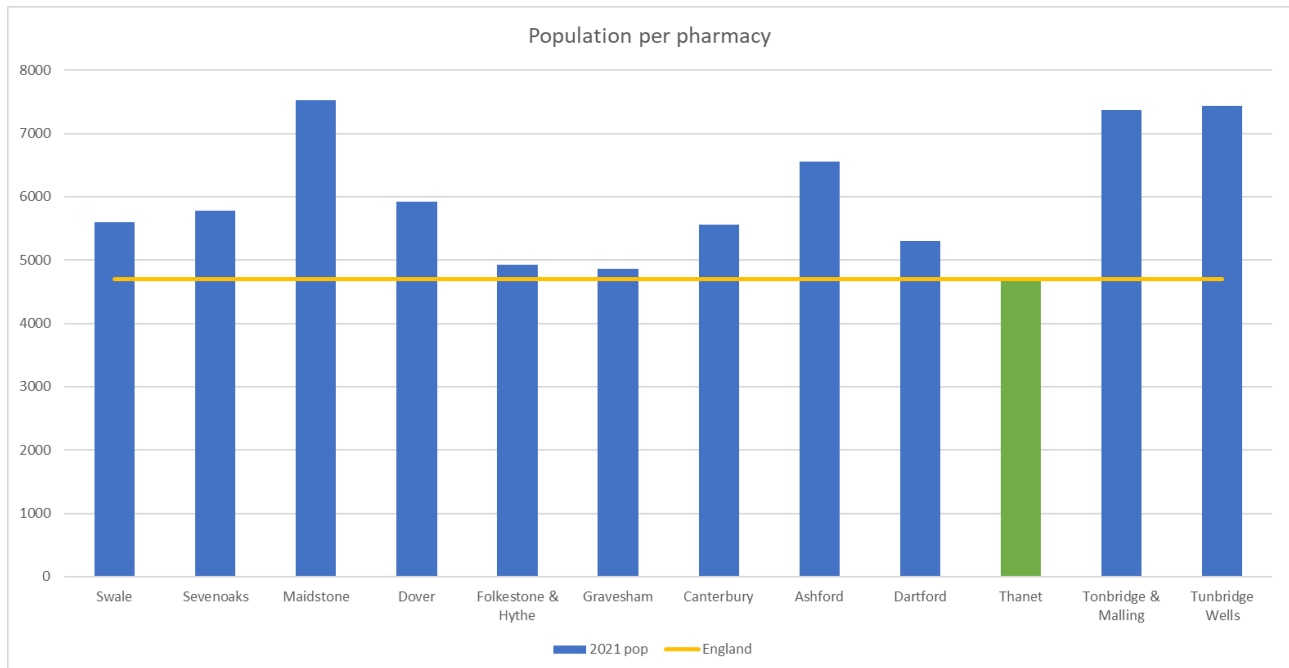
There are a considerable number of care homes in the Thanet area. Patients who are looked after in a care home setting are often high users of medicines. However, because of the nature of their care, they rarely access pharmaceutical services individually, leaving this to be carried out by the care home staff. More recently care home organisations do not use local pharmacies for this service, favouring the large “hub” or “internet” pharmacies which specialise in this type of one-stop service. Therefore, there is not considered to be any relationship between the number of care homes and the need for local pharmaceutical services.

2. Necessary services: current provision within the locality

(All data presented in this section is for the financial year 2020/21 with the exception of lateral flow devices data which covers the 4 months from April 2021 to July 2021)

There are 30 Community pharmacies providing dispensing services in the Thanet locality. That is one pharmacy per 4,715 head of population. Figure 44 below shows how this compares with the other localities of Kent.

Figure 44 Number of people per pharmacy in each locality



22 of the pharmacies open at least one hour after 17:00 on weekdays. 26 are open on Saturdays and 9 open Saturday and Sunday. The weekly opening hours range from 40 to 102, with the average opening hours being 60.65 each week.

In addition, there is one dispensing GP practice in the locality.

There are no distance selling pharmacies in the locality.

The facts below indicate that the majority of prescriptions generated in the locality are dispensed in the locality. There are 4.3% of prescriptions generated in the area that are dispensed in neighbouring areas and a tiny percentage that are generated outside the locality and dispensed by Thanet locality community pharmacies ⁽¹⁾.

- 1,458 outside prescribers dispense in Thanet
 - 2.2% of all items dispensed in Thanet
- 19 prescribers in Thanet
 - 97.8% of all items dispensed in Thanet
- 46 dispensers in Thanet
 - 95.7% of all items prescribed in Thanet
- 1,029 dispensers outside of Thanet
 - 4.3% of all items prescribed in Thanet

Pharmacy locality: Maps 1 and 2 above show the locality of the community pharmacies and GP dispensing practices.

Opening times

Table 60 below show the core and supplementary hours of each pharmacy ⁽⁶⁵⁾

Table 60. Opening times for all pharmacies

Pharmacy	Total core weekly hours	Total supplementary weekly hours	Total weekly hours	Max. hours open after 5pm at least 1 day/week	Saturday hours	Sunday Hours
Paydens Pharmacy	40.5	6	46.5	0.5	4	0
Newington Pharmacy	40	10.5	50.5	1.5	3	0
Paydens Pharmacy	40	13.5	53.5	1	8.5	0
Northdown Pharmacy	40	5	45	2	0	0
Palm Bay Pharmacy	40	5	45	1	0	0
Boots the Chemists	40	17	57	0.5	8.5	6
Paydens Pharmacy	40	10.5	50.5	1.5	3	0
Central Pharmacy	101.5	0	101.5	5	14.5	14.5
Courts Pharmacy	40	13	53	1	3	0
Tesco Pharmacy, Broadstairs	100	-10	90	5.5	14	6
Paydens Pharmacy	40	14	54	1.5	4	0
Boots the Chemists	40	11	51	0.5	8.5	0
Paydens Pharmacy	40	8.5	48.5	1	3.5	0
Boots the Chemists	40	31	71	3	10	6
Lloyds pharmacy (in Sainsbury)	40	44	84	4	13	6

Table 60 continued

Pharmacy	Total core weekly hours	Total supplementary weekly hours	Total weekly hours	Max. hours open after 5pm at least 1 day/week	Saturday hours	Sunday Hours
Boots the Chemists	40	5	45	0.5	7.5	0
Rowlands Pharmacy	40	3.35	43.35	1	0	0
Baxters Pharmacy	40	5	45	0.5	7.5	0
Day Lewis Pharmacy	100	0	100	5.5	15.5	7
Courts Pharmacy	40	6.5	46.5	0.5	4	0
Courts Pharmacy	40	10.5	50.5	0.5	8	0
Wools Pharmacy	42.5	11.5	54	1.5	4	0
Boots the Chemists	40	5	45	0.5	7.5	0
Boots the Chemists	40	8	48	1	8	0
Tesco Pharmacy, Ramsgate	100	2	102	5.5	16	6
Touchwood Pharmacy	40	0	40	1	4	0
Pierremont Pharmacy	40	16.5	56.5	2	4	0
Rowlands Pharmacy	40	2.5	42.5	1	0	0
Asda Pharmacy	100	0	100	6	14	6
Asda Pharmacy	100	0	100	6	15	6

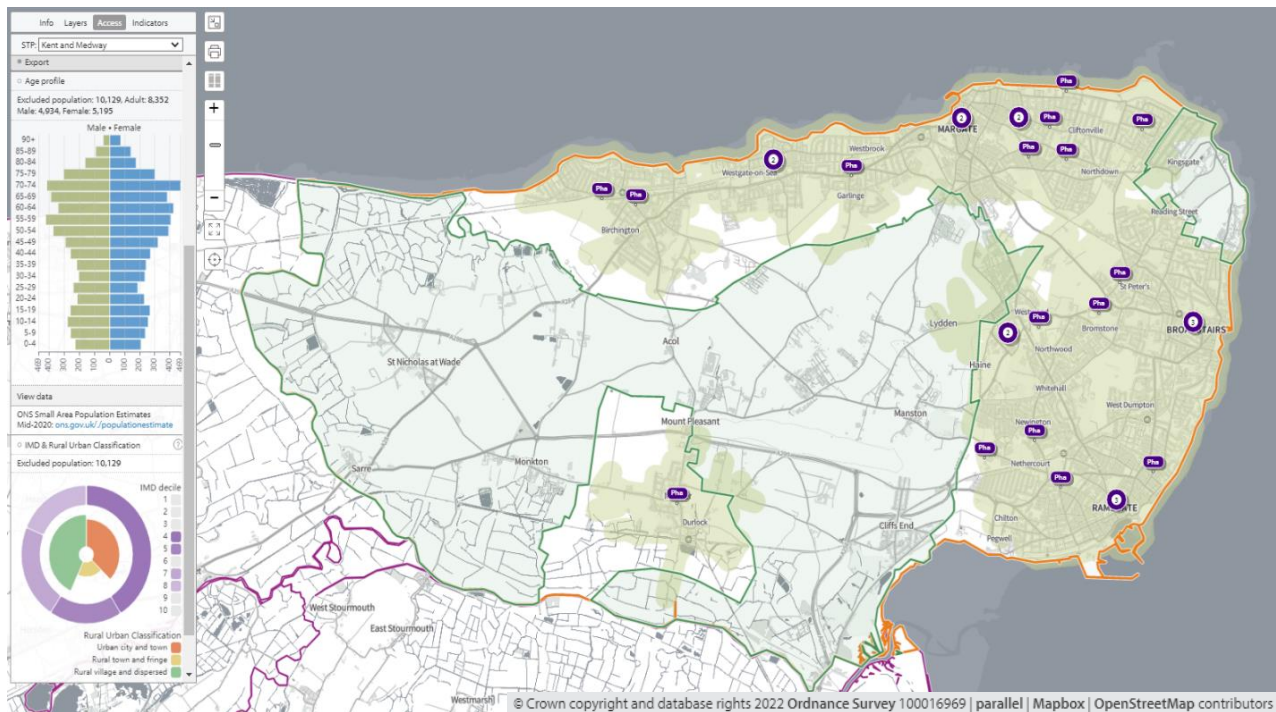
The Thanet locality has one GP dispensing practice, Minster Surgery CT12 4AB

Access to Pharmacy Services

Travel times

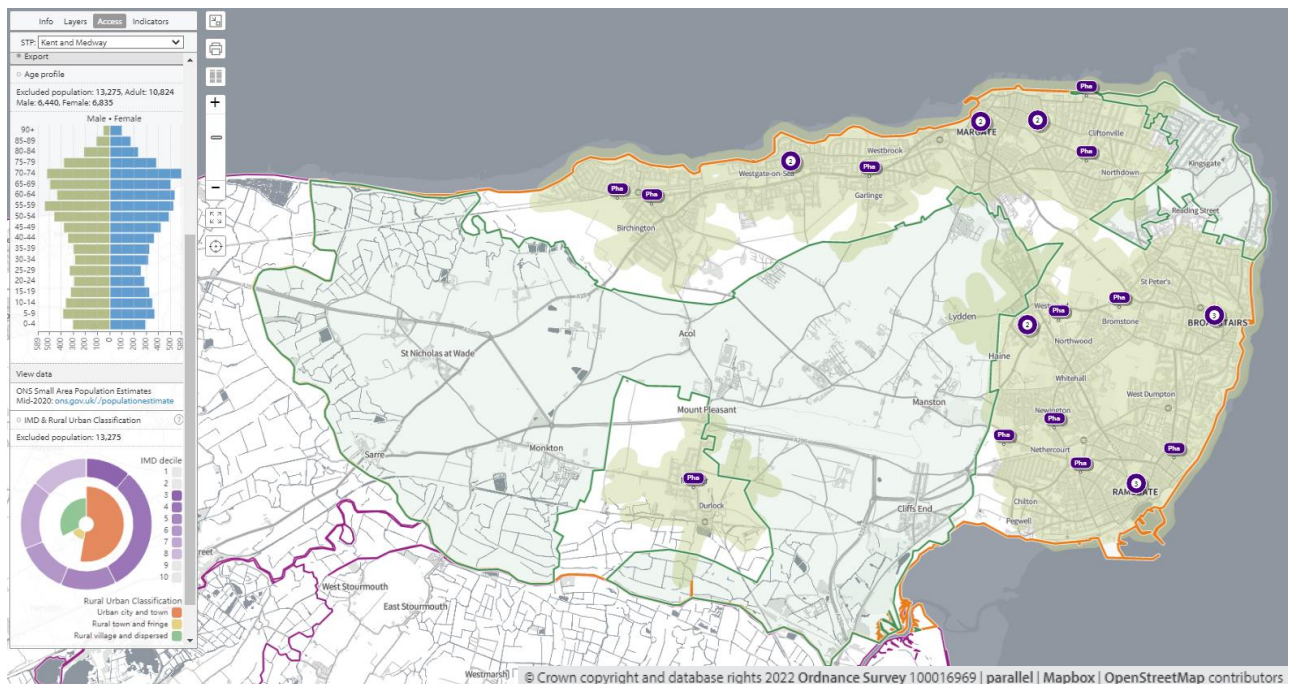
In **map 174**, below, the green shaded areas are within a **20-minute walk** of a community pharmacy/dispensing GP practice. The data indicates that 10,192 (7.2%) of people are not within a 20-minute walk and for those aged over 65 years this figure increases to 2,922 (8.6%) people.

Map 174. Locations of community pharmacies and lower super output areas not within a 20-minute walk



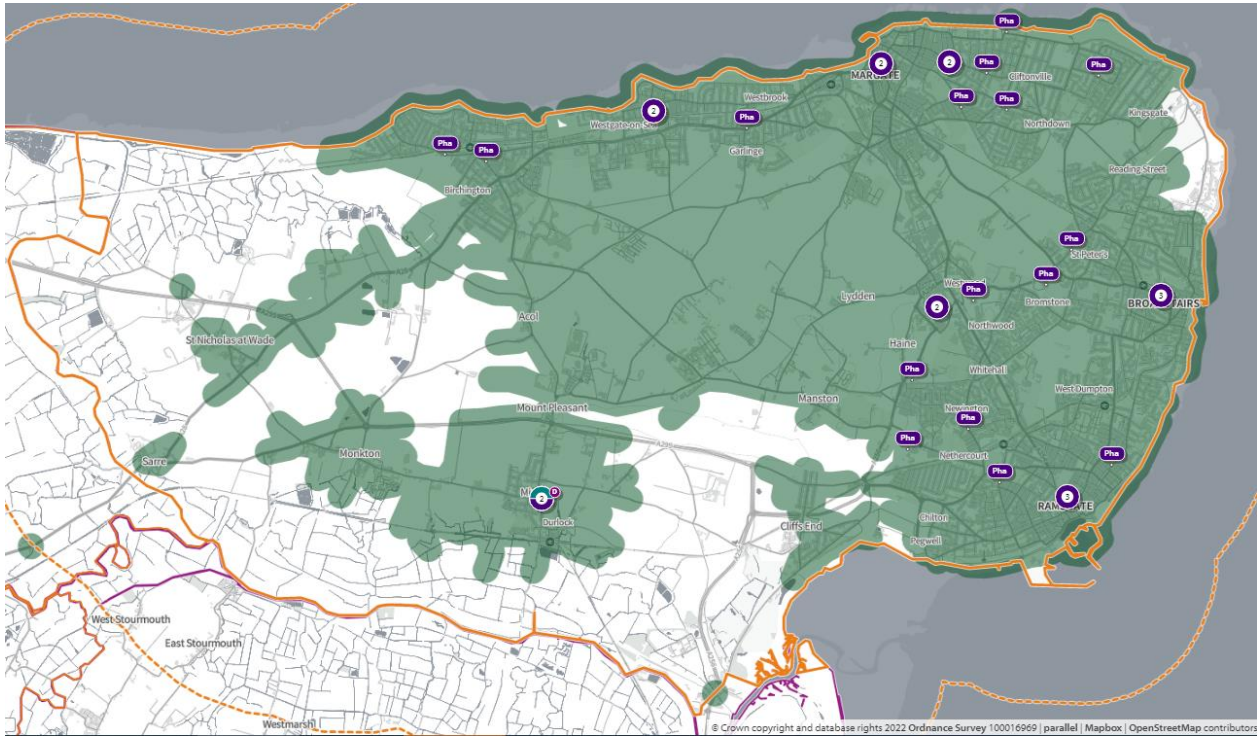
In **map 175**, below, the olive-green shaded areas are within a 20-minute walk of a community pharmacy on a Saturday. 13,275 (9.3%) of people are not within a 20-minute walk on a Saturday and 65+ population 11% (3,724) is not within a 20-minute walk of a community pharmacy on a Saturday.

Map 175. Locations of community pharmacies open on Saturdays and lower super output areas not within a 20-minute walk



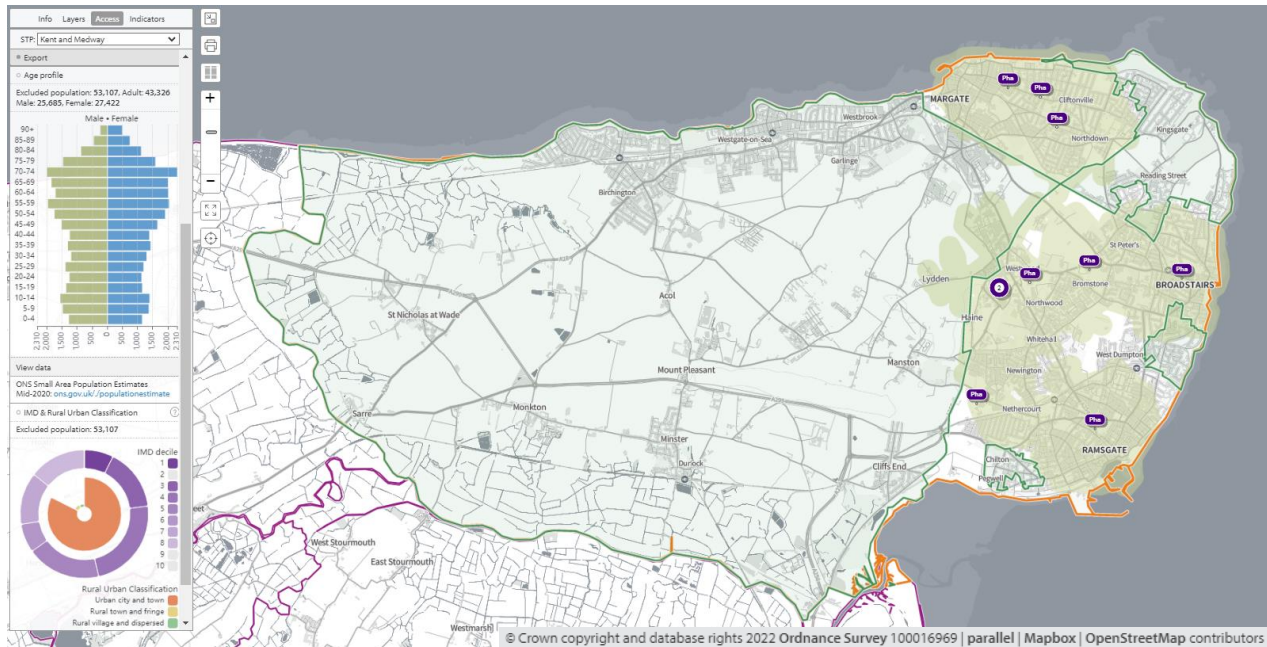
Map 176, below, shows 20 minutes public transport access, as green shaded areas to community pharmacies. The entire population is within 20-minutes by public transport.

Map 176. Locations of community pharmacies and areas within 20-minutes by public transport on weekday mornings



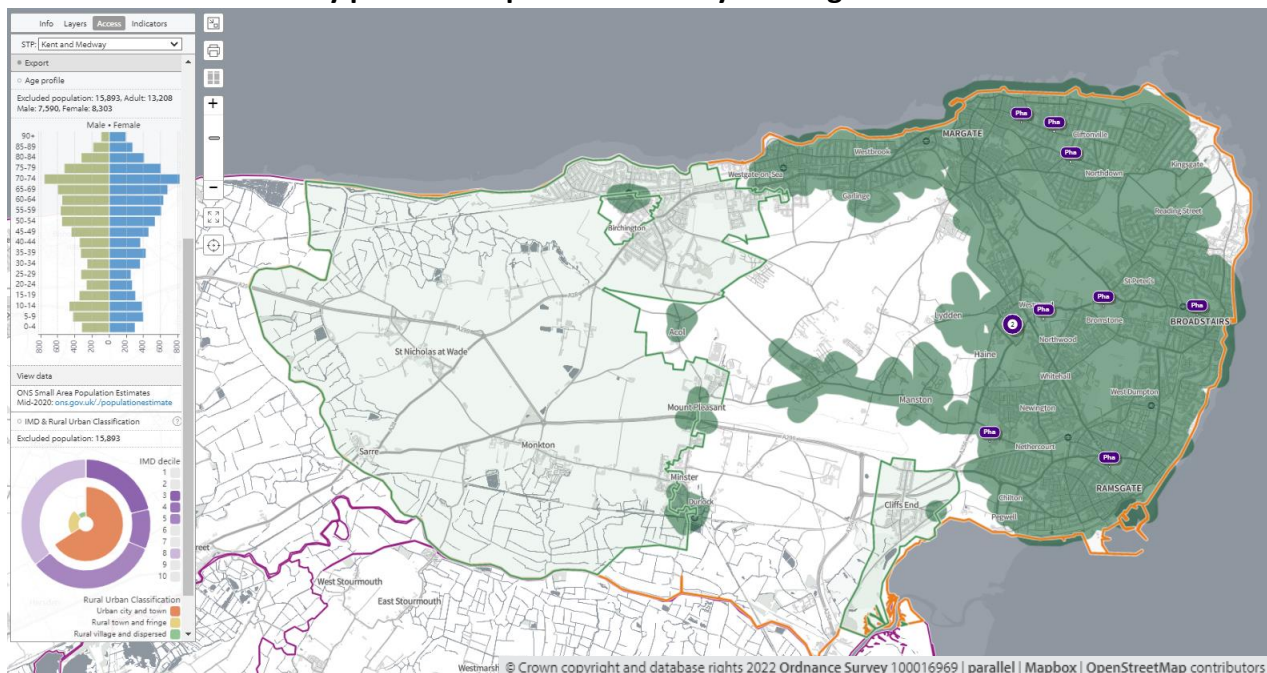
In **map 177** the olive-green shaded areas are within a 20-minute walk of a community pharmacy that opens until at least 7pm on weekdays. 53,107 (37.5%) people are not within a 20-minute walk of a community pharmacy that opens until at least 7pm on weekdays. 44.5% (15,063) of 65+ population is not within a 20-minute walk of a community pharmacy that opens until at least 7pm on weekdays.

Map 177. Locations of community pharmacies open until at least 7pm and lower super output areas not within a 20-minute walk



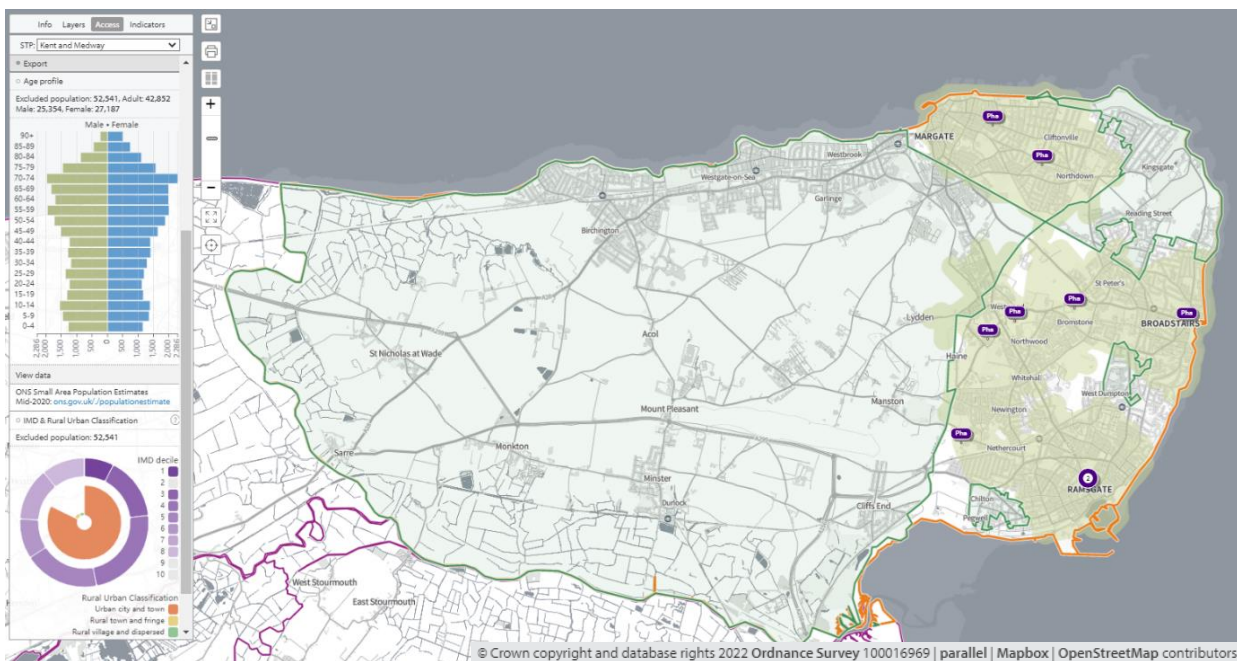
In **map 178**, below, the green shaded areas are within 20-minutes by public transport of a community pharmacy that opens past 7pm on weekdays. 15,893 (11.2%) people are not within 20-minutes by public transport that opens past 7pm on weekdays. 16.1% (5,445) of 65+ population is not within 20 minutes by public transport of a community pharmacy that opens past 7pm on weekdays

Map 178. Locations of community pharmacies open until at least 7pm and lower super output areas not within 20-minutes by public transport on weekday evenings



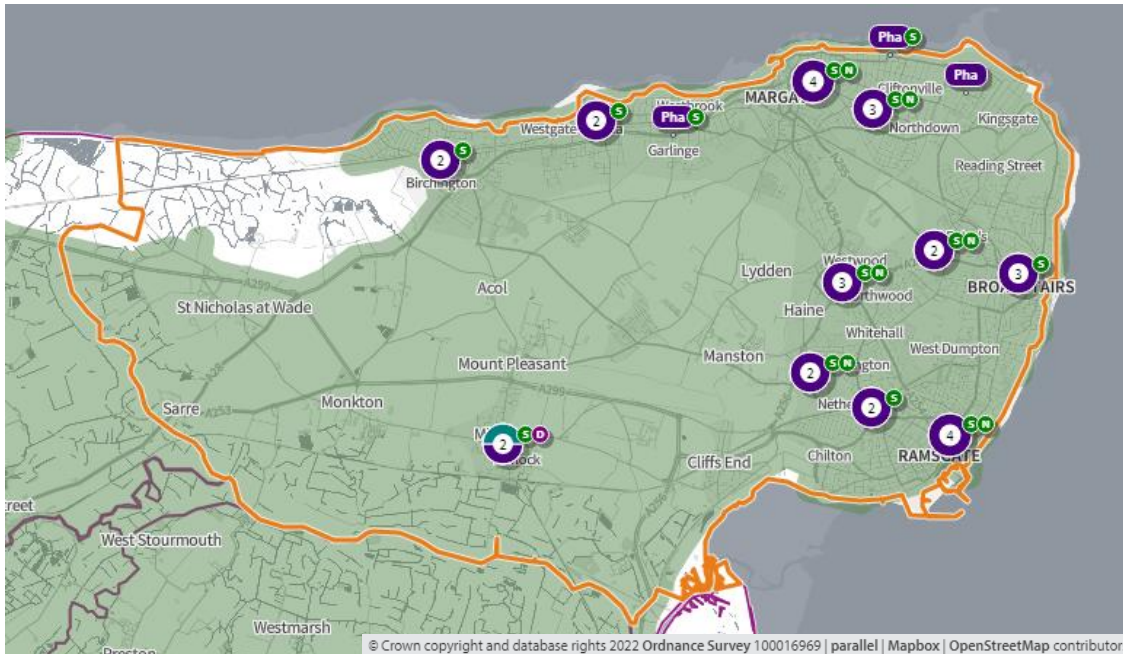
In **map 179**, below, the olive-green shaded areas are within a 20-minute walk of a community pharmacy that opens on Sundays. 37.1% (52,541) of the population is not within a 20-minute walk of a community pharmacy that opens on Sundays. 44.1% (14,916) of 65+ population is not within a 20-minute walk of a community pharmacy that opens on Sundays

Map 179. Locations of community pharmacies open on Sundays and lower super output areas not within a 20-minute walk



In **map 180** below, access during **core opening hours, Saturdays and Sundays** is shown. The green shaded areas are within a **20-minute drive** of a community pharmacy/dispensing GP practice. The entire population is within a 20-minute drive.

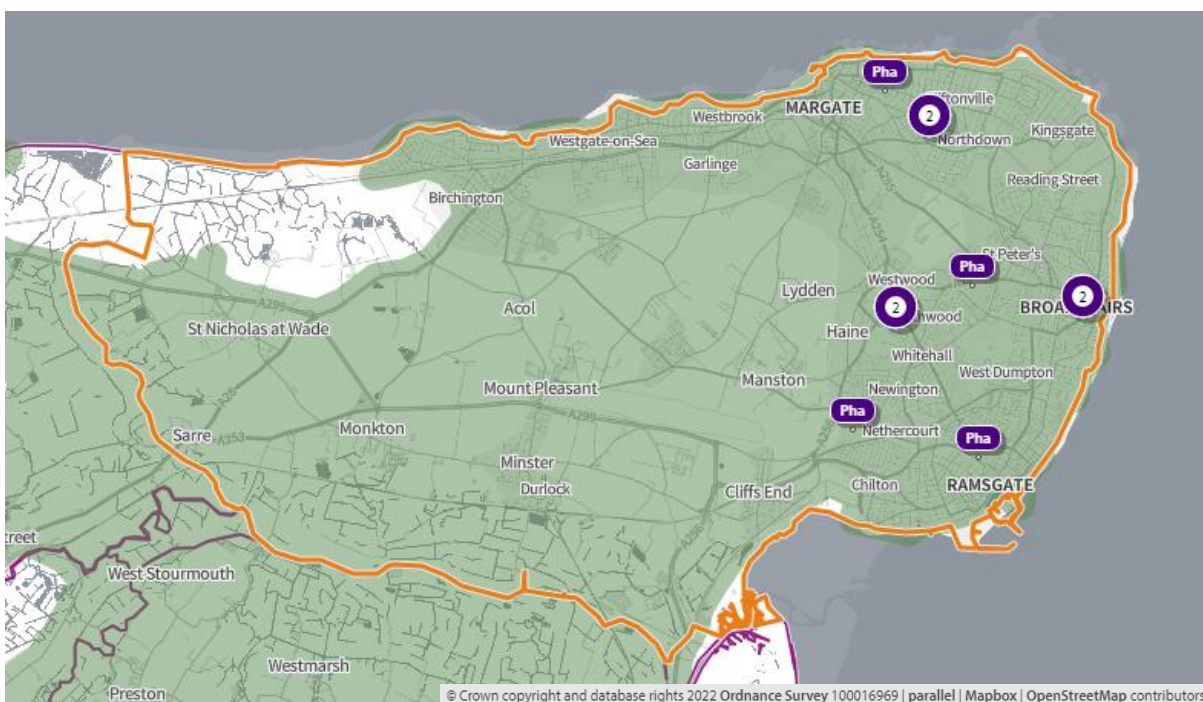
Map 180. Locations of community pharmacies and areas within 20-minutes by car



S = open Saturday N = open Sunday

In **map 181** below, the green shaded areas are within **20-minutes by car** of a community pharmacy that opens **until at least 7pm on weekdays**. The entire population is within a 20-minute drive.

Map 181. Locations of community pharmacies open until at least 7pm and areas within 20-minutes by car



3. Necessary services: current provision outside the localities area ⁽¹⁾

The information below indicates the number of prescriptions dispensed in and outside the locality.

- 3.1 million items prescribed in Thanet
 - 3 million items dispensed in Thanet
 - 2.76 million (89.2%) via Electronic Prescription Service
 - 133,966 dispensed outside of the district
 - 74,779 distance selling
 - 43,929 – Canterbury
 - 4,071 – Dover

- 3 million items dispensed in Thanet
 - 2.94 million items dispensed by community pharmacies in Thanet
 - 92,404 dispensed by 12 GP practices:
 - Minster Surgery– 49,960
 - 67,585 items prescribed outside borough i.e. more going out than coming in

The facts below indicate that the majority of prescriptions generated in the locality are dispensed in the locality. There is a small percentage of prescriptions generated in the area that are dispensed in neighbouring areas and an even smaller percentage that are generated outside the locality and dispensed by Thanet community pharmacies ⁽¹⁾.

- 1,458 outside prescribers dispense in Thanet
 - 2.2% of all items dispensed in Thanet
- 19 prescribers in Thanet
 - 97.8% of all items dispensed in Thanet
- 46 dispensers in Thanet
 - 95.7% of all items prescribed in Thanet
- 1,029 dispensers outside of Thanet
 - 4.3% of all items prescribed in Thanet

Some residents choose to access contractors outside both the locality and the Health and Wellbeing Board's area in order to access services:

- Offered by dispensing appliance contractors
- Offered by distance selling premises
- Which are located near to where they work, shop or visit for leisure or other purposes.

Taking into account this choice of pharmacy outside of the locality, the majority of residents can access a pharmacy and do access pharmacy services within the locality.

4. Other relevant services: current provision

The following advanced services are delivered in the Thanet locality.

Table 61. Number of pharmacies providing advanced services

Advanced service name	No. of pharmacies
New Medicine Service	29
Appliance Use Review	0
Hypertension Service [‡]	30
Stoma Appliance Customisation	2
Community Pharmacist Consultation Service (CPCS) [‡]	30
Hepatitis C Antibody Testing Service	1
Seasonal Influenza Vaccination Advances Service	29
Covid Vaccination Service*	0
Covid Home Delivery Service*	28
Covid lateral flow device distribution*	31

*Specific to the Covid-19 pandemic

[‡]Services introduced during the year of study

Please note that three of these services were specific to the Covid-19 pandemic and that others were new services introduced within the year. There is, however, good participation and early adoption of new services from pharmacies in this locality.

5. Other NHS services

The Strategic Health Asset Planning and Evaluation (SHAPE) web application provides the following information:

- Bethesda Medical Centre is open until 8pm on Tuesdays and Wednesdays and 7am-8pm on Fridays
- Broadstairs Medical Practice is open from 7am on Mondays and Tuesdays and until 8pm on Wednesdays
- Dashwood Medical Centre is open until 8pm on Wednesdays and Thursdays
- East Cliff Medical Centre is open until 8pm on Tuesdays and 8am-10.30am on Saturdays
- Minster Surgery is open until 8.15pm on Mondays
- Newington Road Surgery is open until 8pm on Mondays and Fridays
- St Peters Surgery is open until 8.30pm on Mondays
- The Limes Medical Centre is open from 6.55am daily and until 8pm on Mondays and Thursdays

- Westgate Surgery is open from 7am on Wednesdays and Thursdays and until 8pm on Thursdays

There is a 24-hour urgent care service at Queen Elizabeth the Queen Mother Hospital in Margate.

There are also drug and alcohol services, Kent and Medway NHS Hospital Trusts and Kent and Medway NHS and Social Care Partnership Trust and Kent Community Health NHS Foundation Trust with services that generate prescriptions that are dispensed by community pharmacies in this locality.

The number of prescriptions from these services is shown below:

- 24 pharmacies dispensed a total of 8,537 (mean = 356, range = 1-2,684) items from drug and alcohol services
- All 30 pharmacies dispensed a total of 2,191 (mean = 73, range = 21-240) items from Kent and Medway NHS and Social Care Partnership Trust (secondary mental health services)
- 23 pharmacies dispensed a total of 92 items (mean = 4, range = 1-15) from KCHFT
- All 30 pharmacies dispensed a total of 22,228 items (mean = 741, range = 1-1,575) from Kent and Medway hospitals

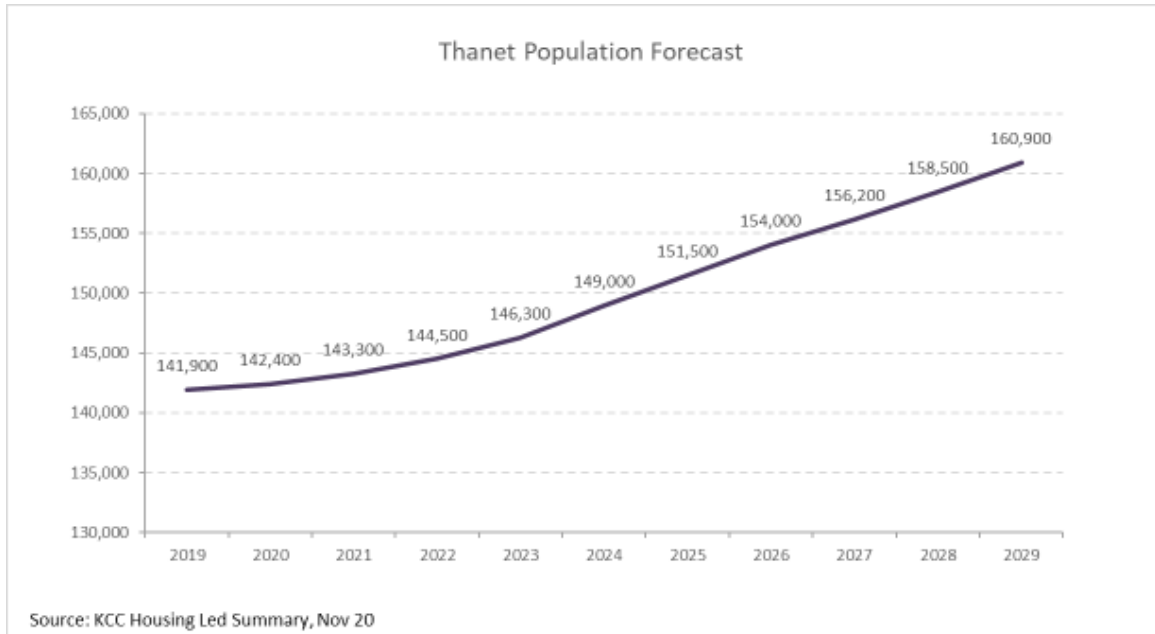
6. Choice with regard to obtaining pharmaceutical; services

As can be seen from sections 2 and 3, those living within the locality and registered with one of the GP practices generally choose to access one of the pharmacies in the locality in order to have their prescriptions dispensed or, if eligible, to be dispensed to by their practice. Those that look outside the locality usually do so either to access a neighbouring pharmacy, or a dispensing appliance contractor or distance selling premises outside of the Health and Wellbeing Board's area.

7. Developments

Figure 45 below shows the predicted increase in the population of the Thanet locality continuing to grow over the lifetime of this PNA. By 2025 it is estimated that each pharmacy will serve a population of 5,050.

Figure 45 Thanet population forecast



 **1 pharmacy per 5,050 people in 2025**

This is an increase of 875 people per pharmacy from 2022 to 2025. As stated in the community pharmacy contracts survey 19 pharmacy in the Thanet locality do have capacity to increase their services and 1 stated it did not. A total of 20 out of 30 pharmacies responded to the survey.

Map 182 below shows where there are major housing developments planned in the coming years and the table indicates the number of dwellings planned for each site.

Map 182. Location of housing developments

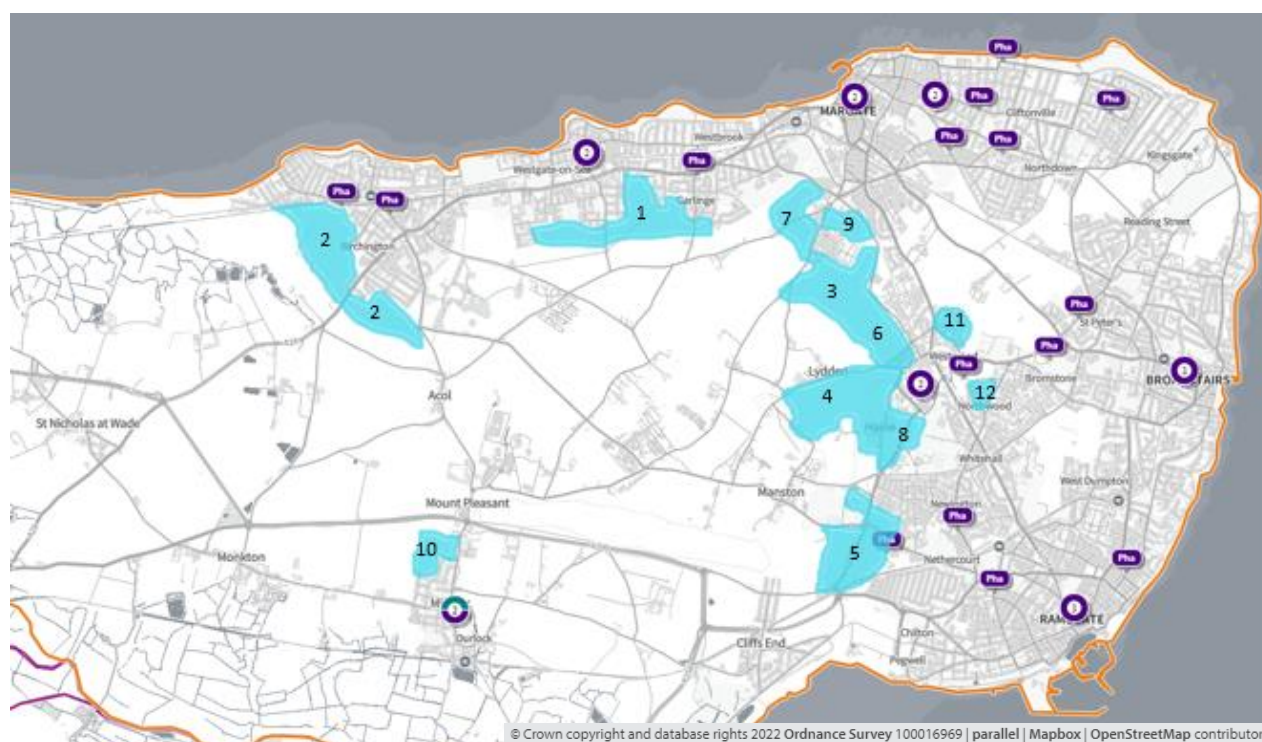
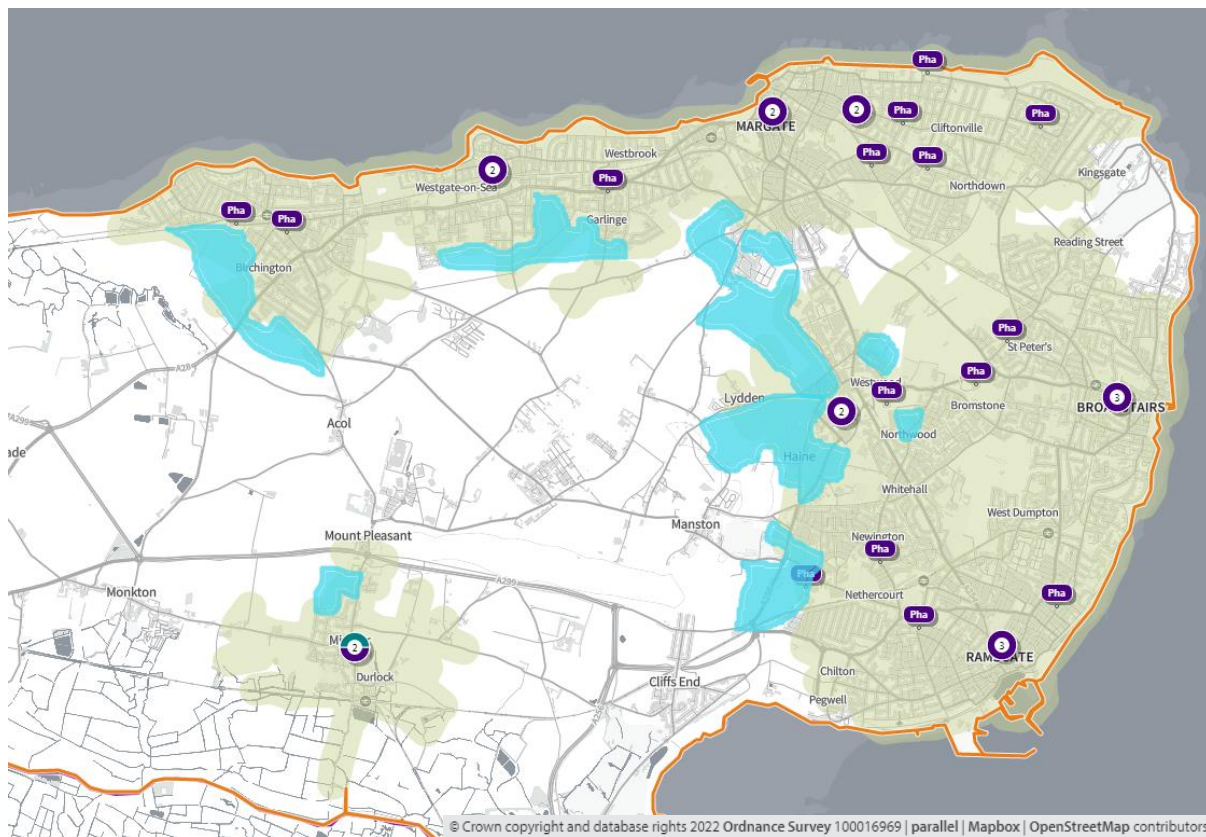


Table 62. Proposed housing developments – number of dwellings per year at each development

Site Name	20/21	21/22	22/23	23/24	24/25	25/26	26/27	27/28	28/29	29/30	2025	2030
1. Westgate			25	75	150	200	250	250	250	250	250	1450
2. Birchington			75	125	137	150	150	150	150	150	337	1087
3. Westwood			50	150	150	150	150	150	150	150	350	1100
4. Manston Court Road/Haine Road/Westwood village			50	160	170	130	140	140	140	120	380	1050
5. Manston Green/Manston Road/Haine Road		20	90	80	100	90	90	80	50	100	290	700
6. Haine Road/Nash Road	40	120	137	125	129	75	75	69			551	770
7. Manston Road/Shottendane Road					30	90	90	90	90	90	30	480
8. New Haine Road (Eurokent)			50	50	50	50	70	70	70	70	150	480
9. Nash Road/Manston Road		20	70	70	70	20					230	250
10. Tothill Street, Minster			30	50	50	50	34	36			130	250
11. Westwood Lodge, Poorhole Lane	20	50	50	31							151	151
12. Thanet Reach/Northwood Road		20	25	20	40	20					105	125

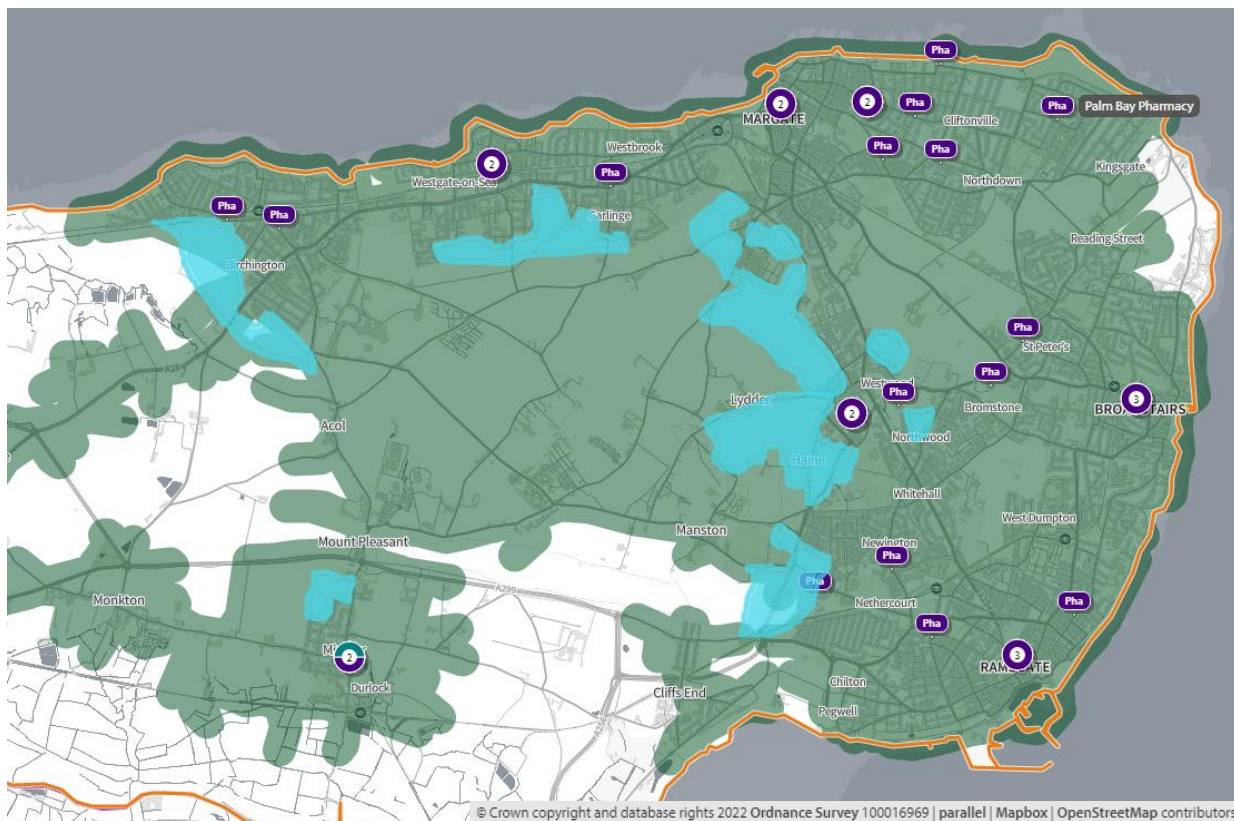
In **map 183**, below, the **green shaded areas** are within a **20-minute walk** of a community pharmacy/dispensing GP practice and the **blue shaded areas** are locations of **major housing developments (≥100 dwellings)**

Map 183. Location of community pharmacies/dispensing GPs, proposed housing developments, and areas within a 20-minute walk of a community pharmacy/dispensing GP



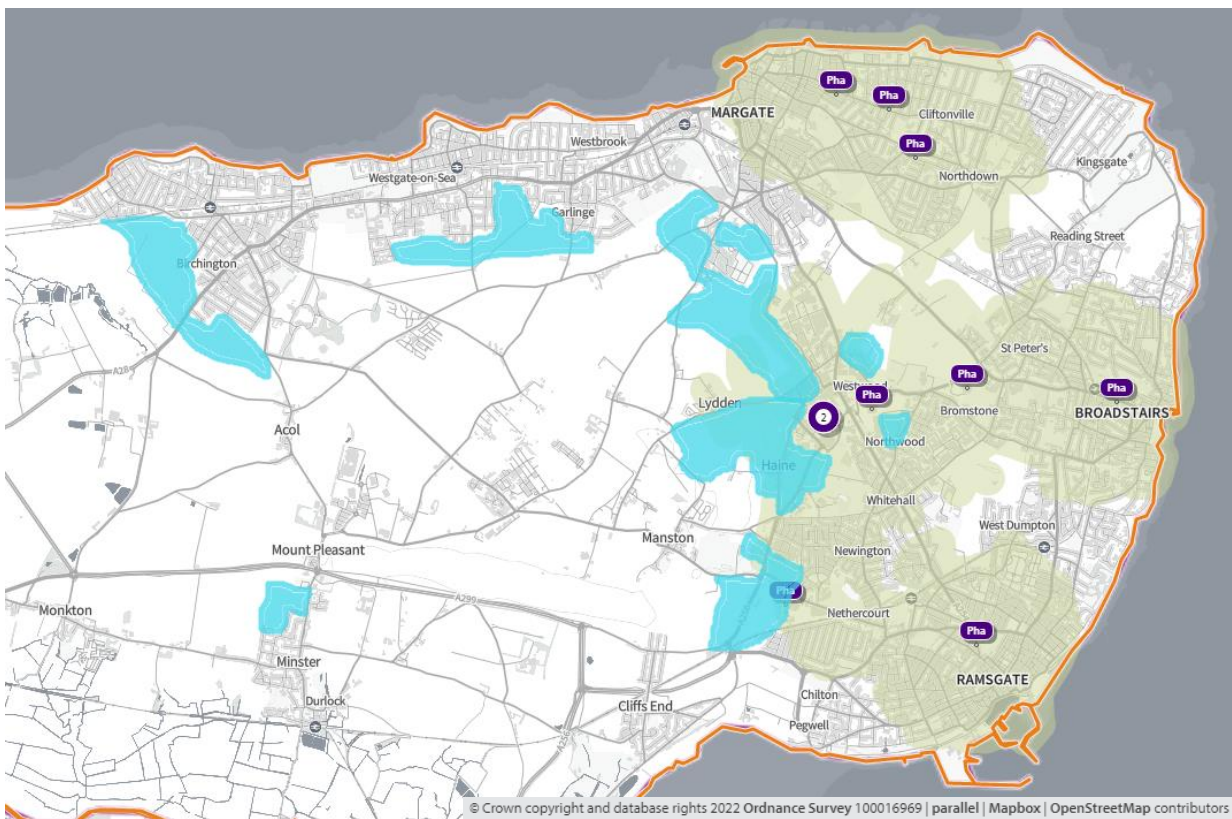
In **map 184**, below, the green shaded areas are within 20-minutes by public transport of a community pharmacy/dispensing GP practice and the **blue shaded areas are locations of major housing developments (≥100 dwellings)**

Map 184. Location of community pharmacies, proposed housing developments, and areas within 20 minutes of a community pharmacy by public transport on weekday mornings



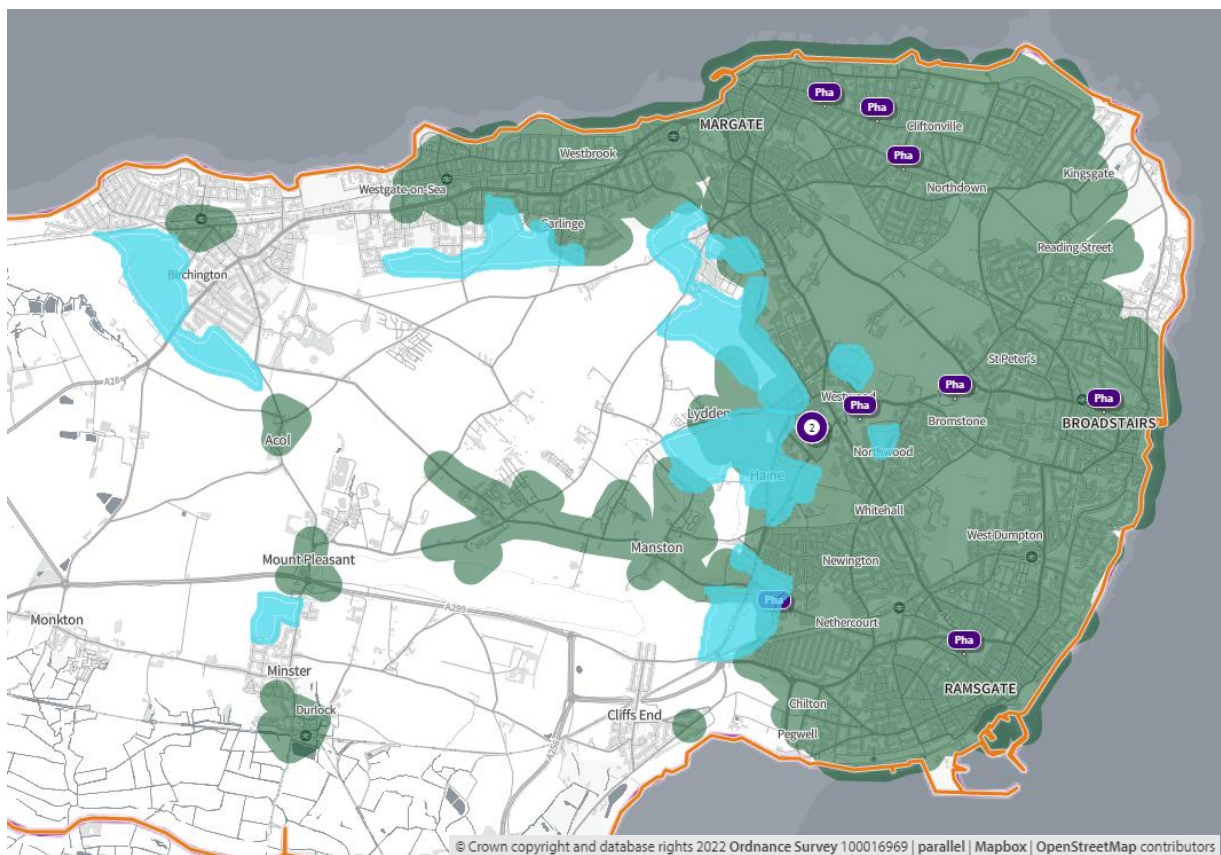
In **map 185, below**, the green shaded areas are within a 20-minute walk of a community pharmacy that is open until at least 7pm weekdays. The blue shaded areas are locations of major housing developments (≥ 100 dwellings)

Map 185. Location of community pharmacies, proposed housing developments, and areas within a 20-minute walk of a community pharmacy that is open until at least 7pm on weekdays



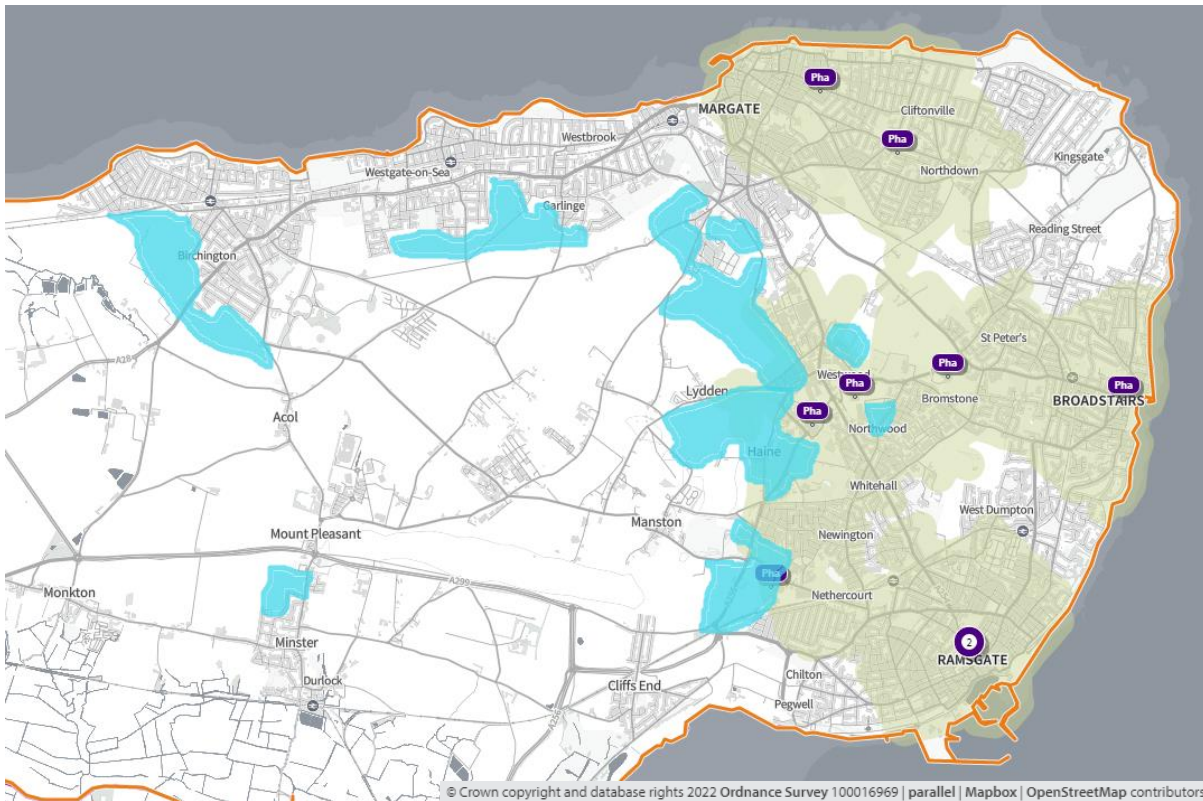
In **map 186**, below, the green shaded areas show area within 20-minutes by public transport of a community pharmacy practice that is open to at least 7pm and the blue shaded areas are locations of major housing developments (≥ 100 dwellings)

Map 186. Locations of community pharmacies open until at least 7pm on weekdays, proposed housing developments, and areas within 20 minutes of a community pharmacy by public transport on weekday evenings



In **map 187**, below, the green shaded areas are within **20 minutes walk** of a community pharmacy that is open on **Sundays** and blue shaded areas are locations of major housing developments.

Map 187. Location of community pharmacies, proposed housing developments, and areas within a 20-minute walk of a community pharmacy that is open on Sundays



8. Necessary services: - Gaps in provision

The access to pharmacies is good across the Thanet locality at present. The hours of access are excellent with six 100- hour pharmacies providing significant contribution to the access. The pharmacies on average currently have below the English average head of population per pharmacy. In the contractor survey only one pharmacy stated that they did not have capacity to increase dispensing or other service capacity.

There are developments planned around existing conurbations encroaching into rural area. The data indicated that the existing pharmacies will be able to provide pharmacy services. No gaps have been identified.

9. Improvements or better access: Gaps in provision

No gaps were identified