

Local Services Provided by Pharmacies and GP Practices

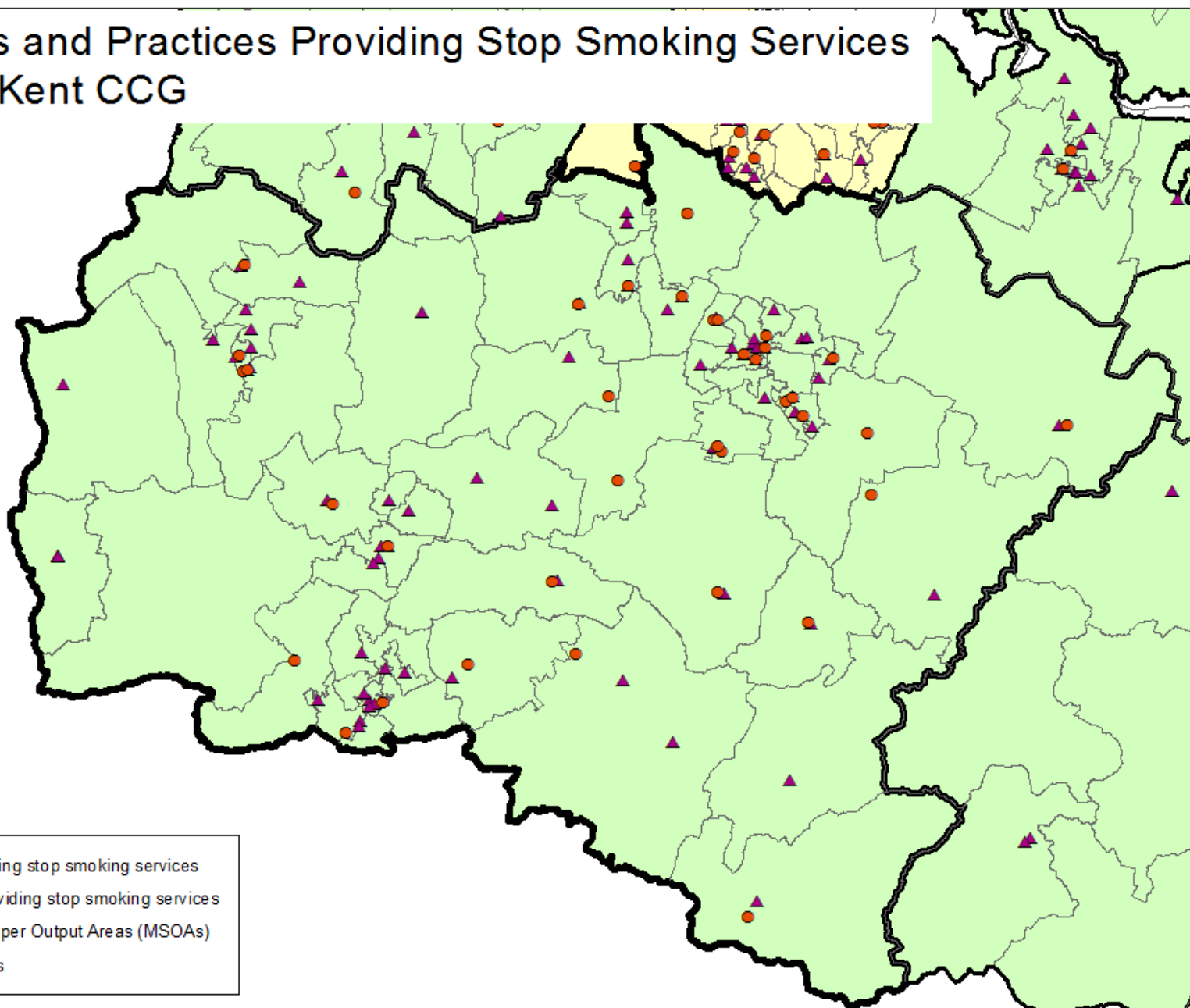
NHS West Kent CCG

Scope

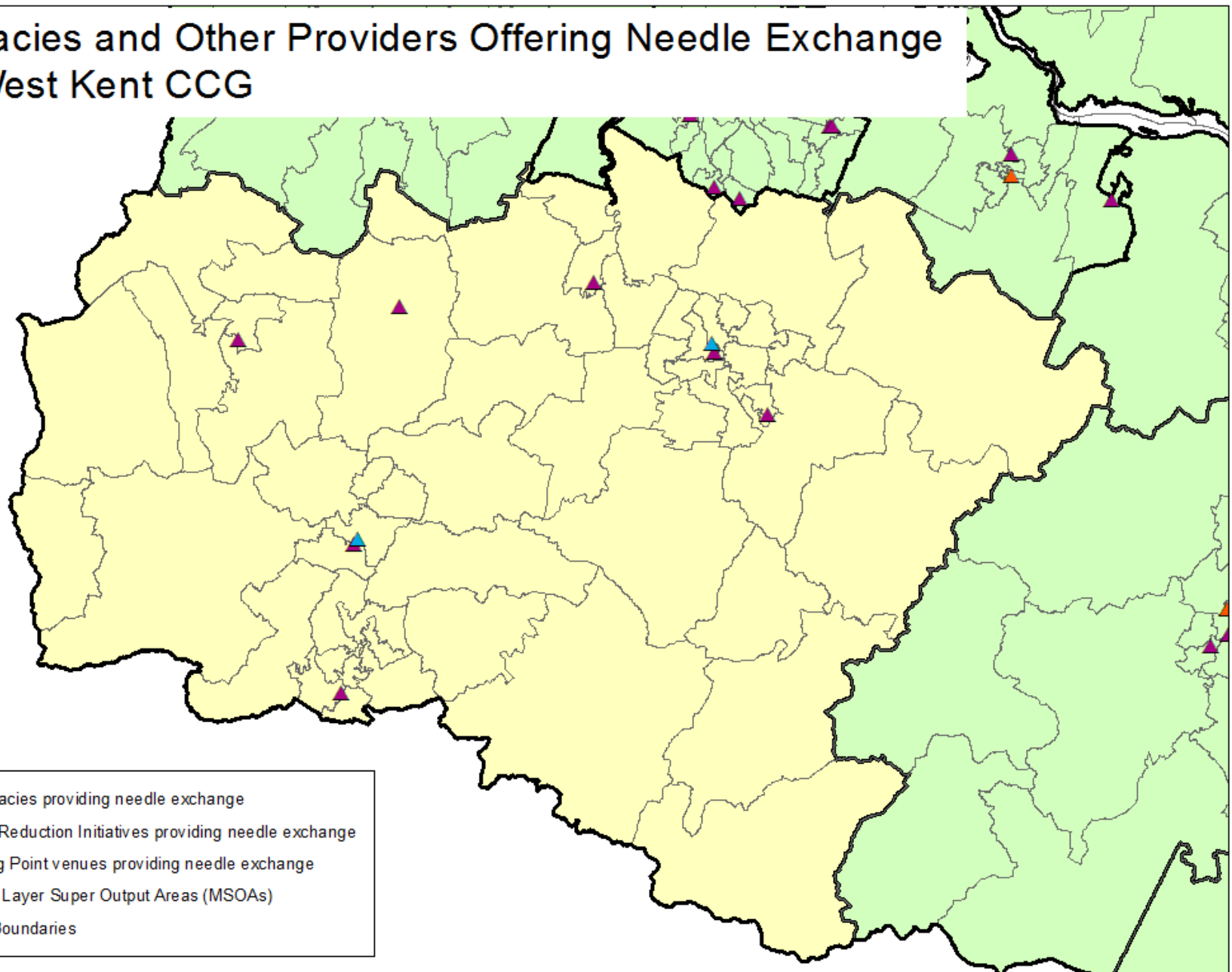
Services are provided by both pharmacies and GPs on behalf of Public Health, Clinical Commissioning Groups and other local commissioners.

Maps showing the locations of these services are included within this document. These are not classed as pharmaceutical services but have been included for information.

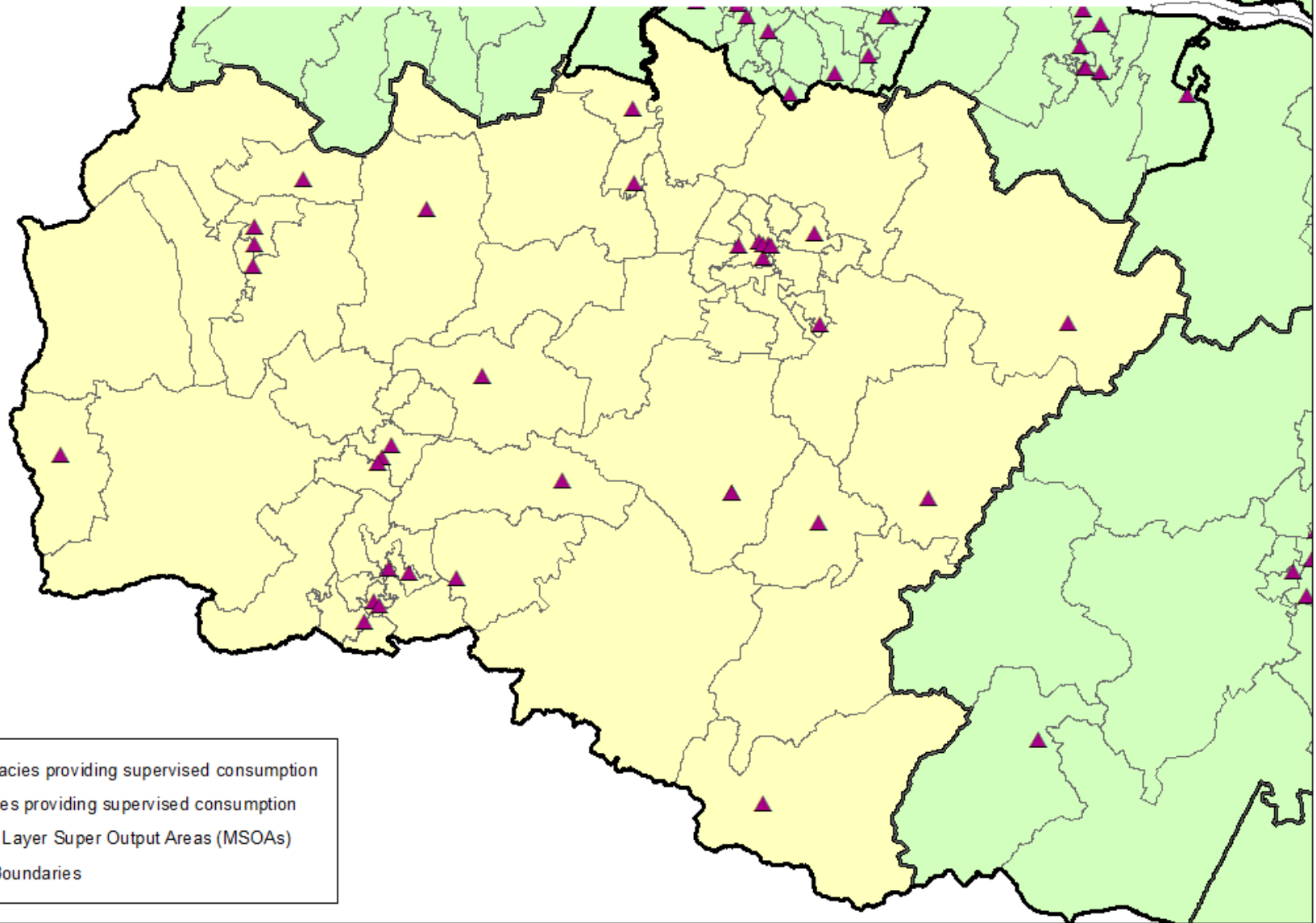
Pharmacies and Practices Providing Stop Smoking Services NHS West Kent CCG



Pharmacies and Other Providers Offering Needle Exchange NHS West Kent CCG



Pharmacies and GP Practices Providing Supervised Consumption NHS West Kent CCG



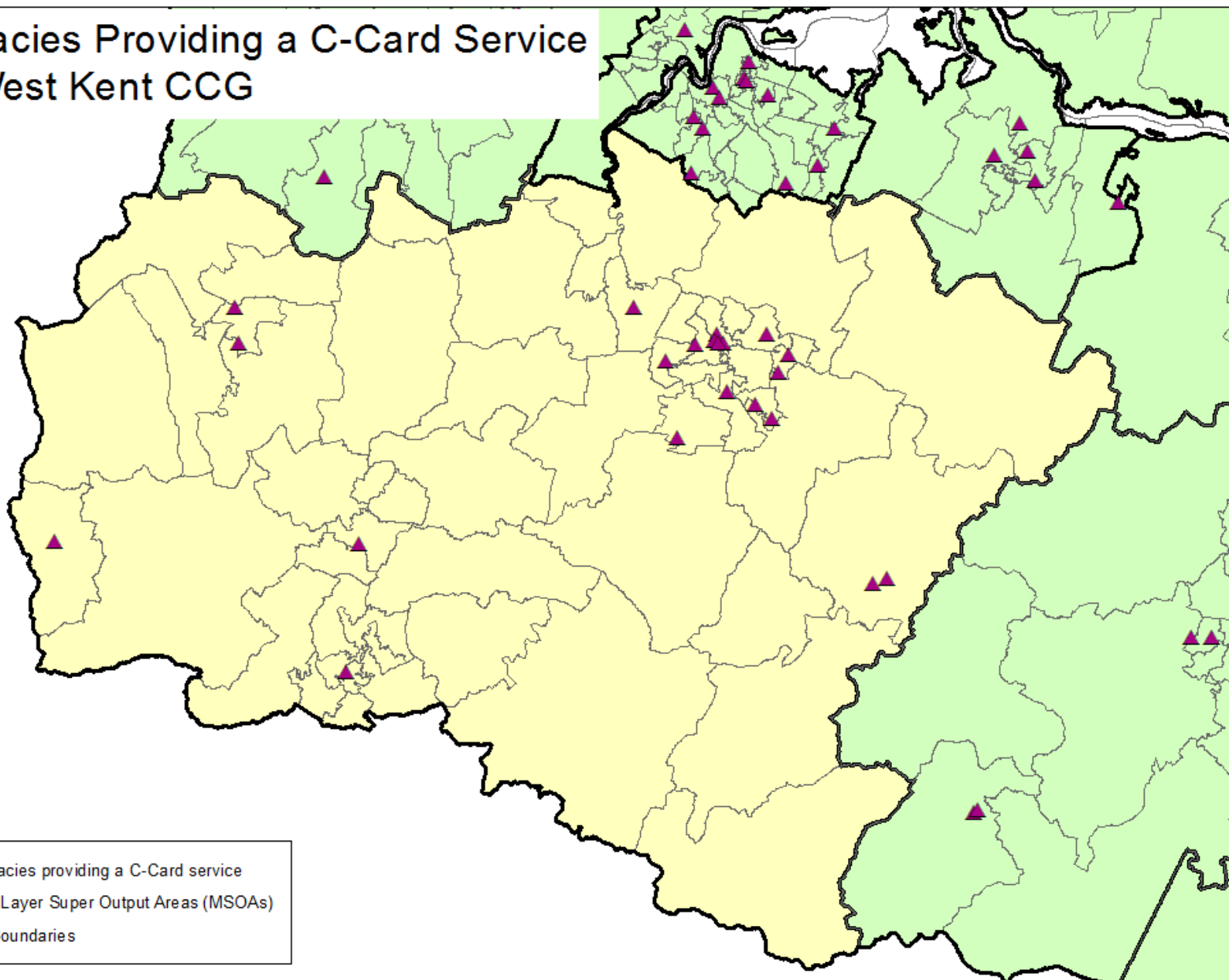
- ▲ Pharmacies providing supervised consumption
- Practices providing supervised consumption
- Middle Layer Super Output Areas (MSOAs)
- ▭ CCG Boundaries

Chlamydia Testing

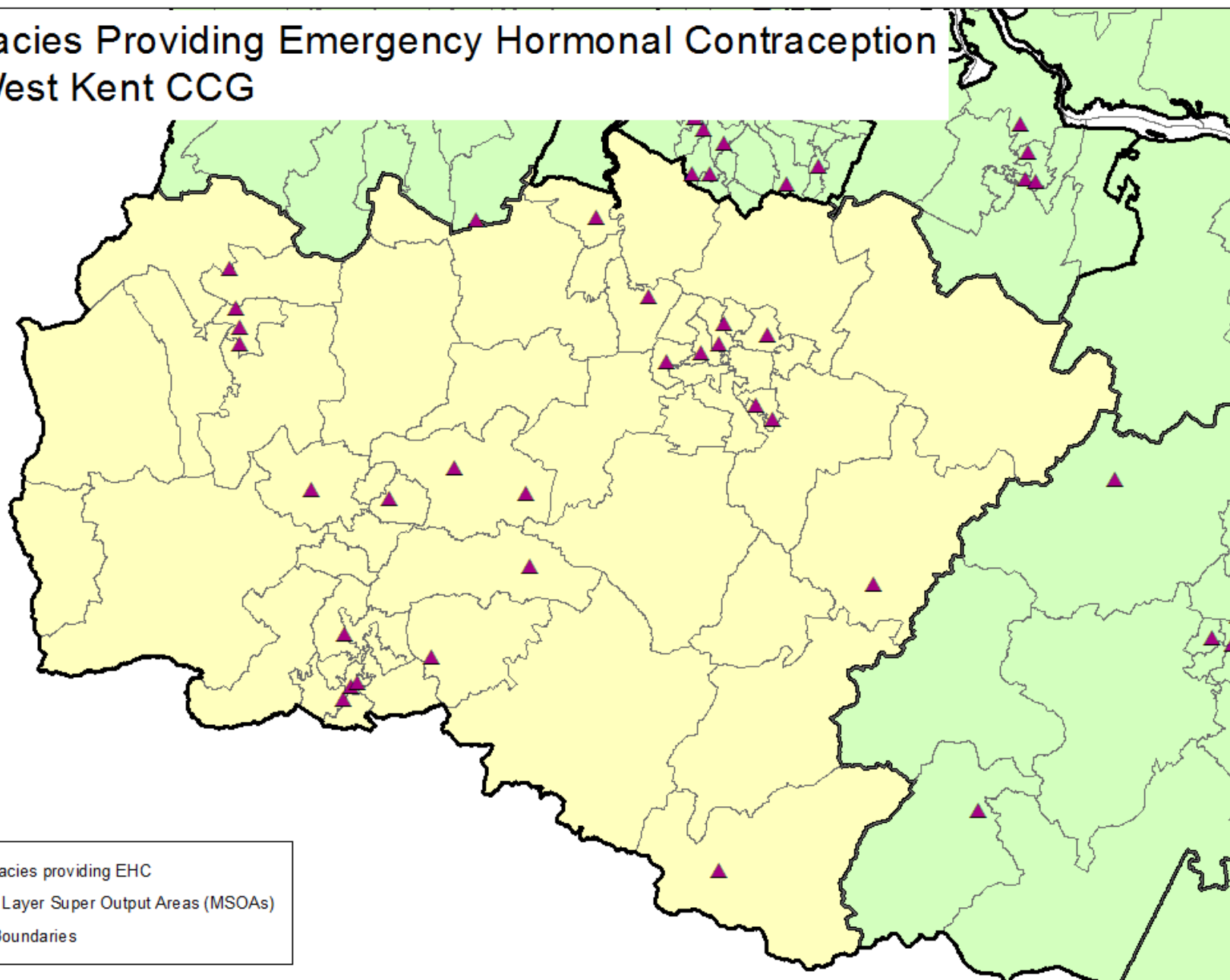
This service is currently being reviewed.

Details of new sites will available from 1st April 2015.

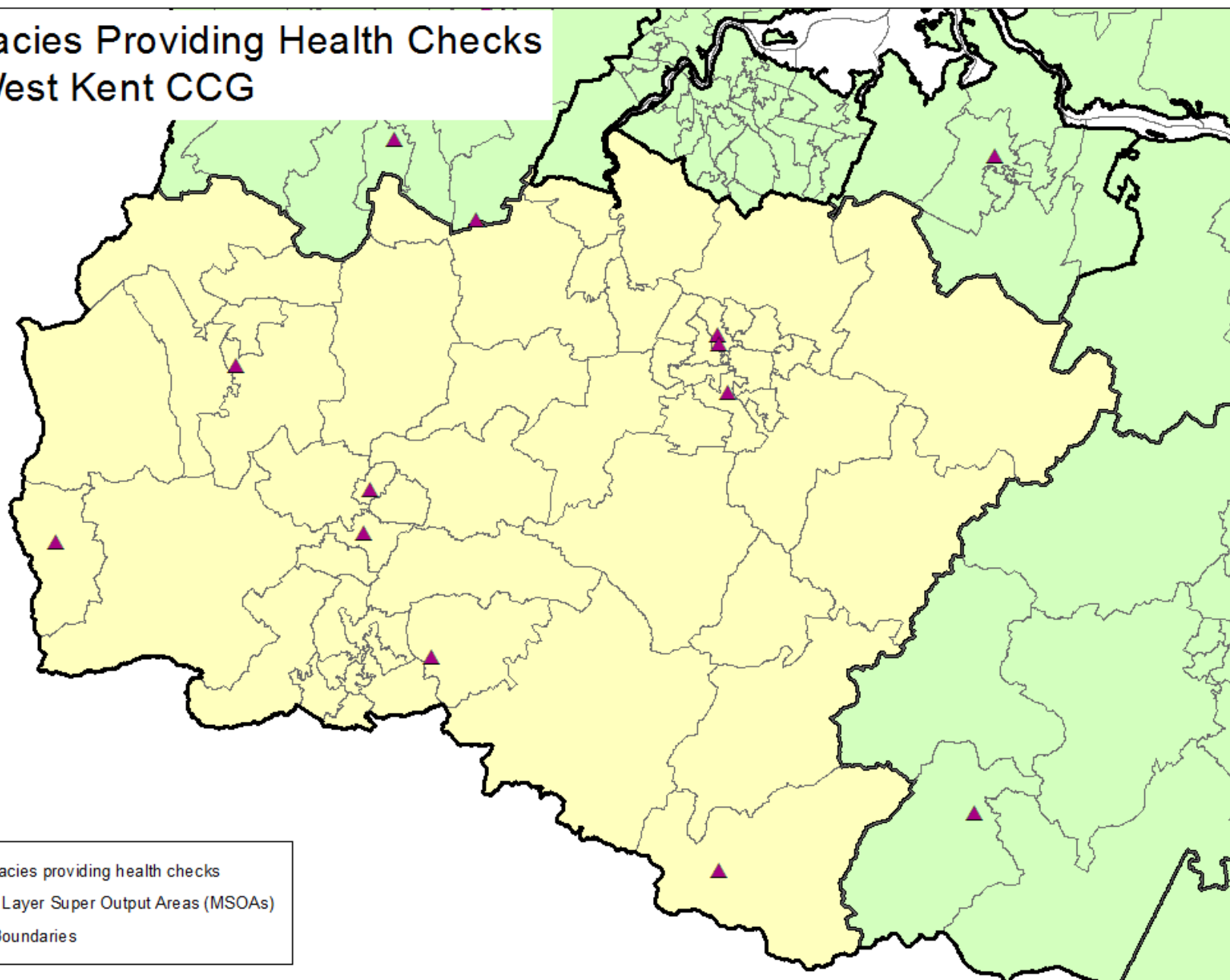
Pharmacies Providing a C-Card Service NHS West Kent CCG



Pharmacies Providing Emergency Hormonal Contraception NHS West Kent CCG



Pharmacies Providing Health Checks NHS West Kent CCG



Pharmacy Participation in the Common Ailment Scheme NHS West Kent CCG

