

Pharmaceutical Needs Assessment

NHS West Kent CCG

Supplementary Data and Maps

Data correct as of February 2015

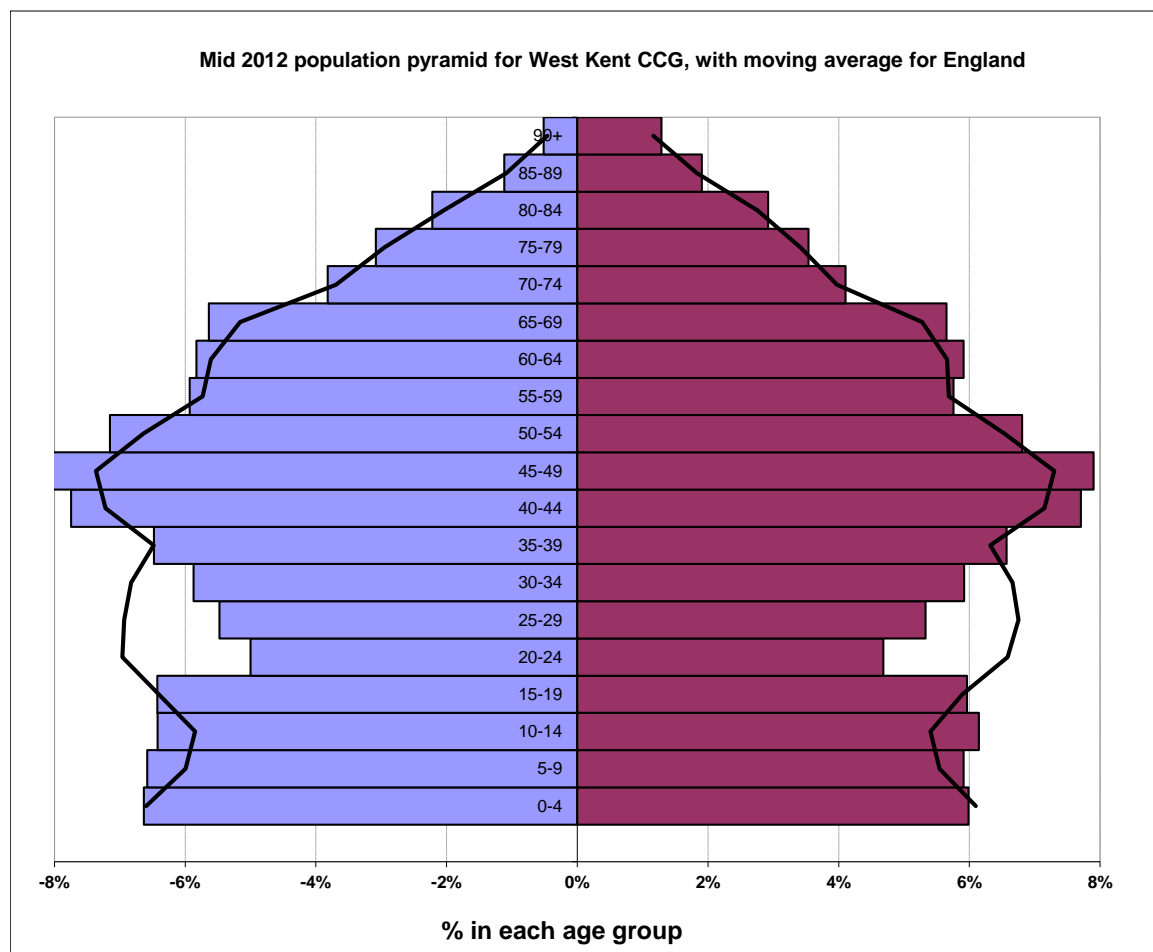
Orientation: NHS West Kent CCG



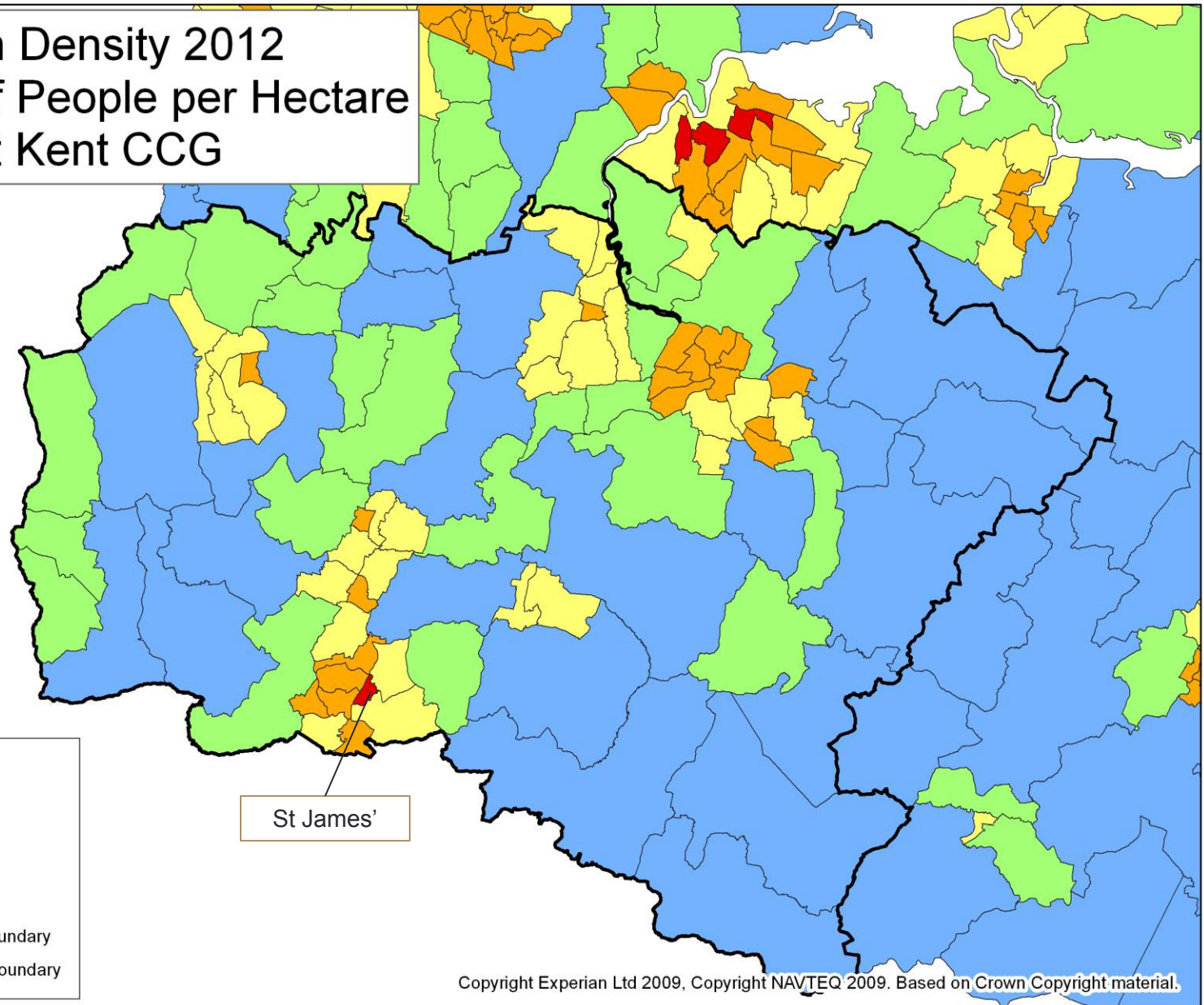
Population

Mid Year Population Estimates for NHS West Kent CCG, 2012 (Rounded)

Age Band	Males	Females	Total
0-4	15100	14100	29200
5-9	15000	14000	28900
10-14	14600	14500	29100
15-19	14600	14100	28700
20-24	11400	11100	22400
25-29	12500	12600	25000
30-34	13400	14000	27300
35-39	14700	15500	30300
40-44	17600	18200	35800
45-49	18400	18700	37000
50-54	16300	16100	32300
55-59	13500	13600	27100
60-64	13300	14000	27200
65-69	12800	13300	26200
70-74	8700	9700	18400
75-79	7000	8400	15400
80-84	5000	6900	11900
85-89	2500	4500	7000
90+	1200	3000	4200
All Ages	227500	236200	463700



Population Density 2012
Number of People per Hectare
NHS West Kent CCG



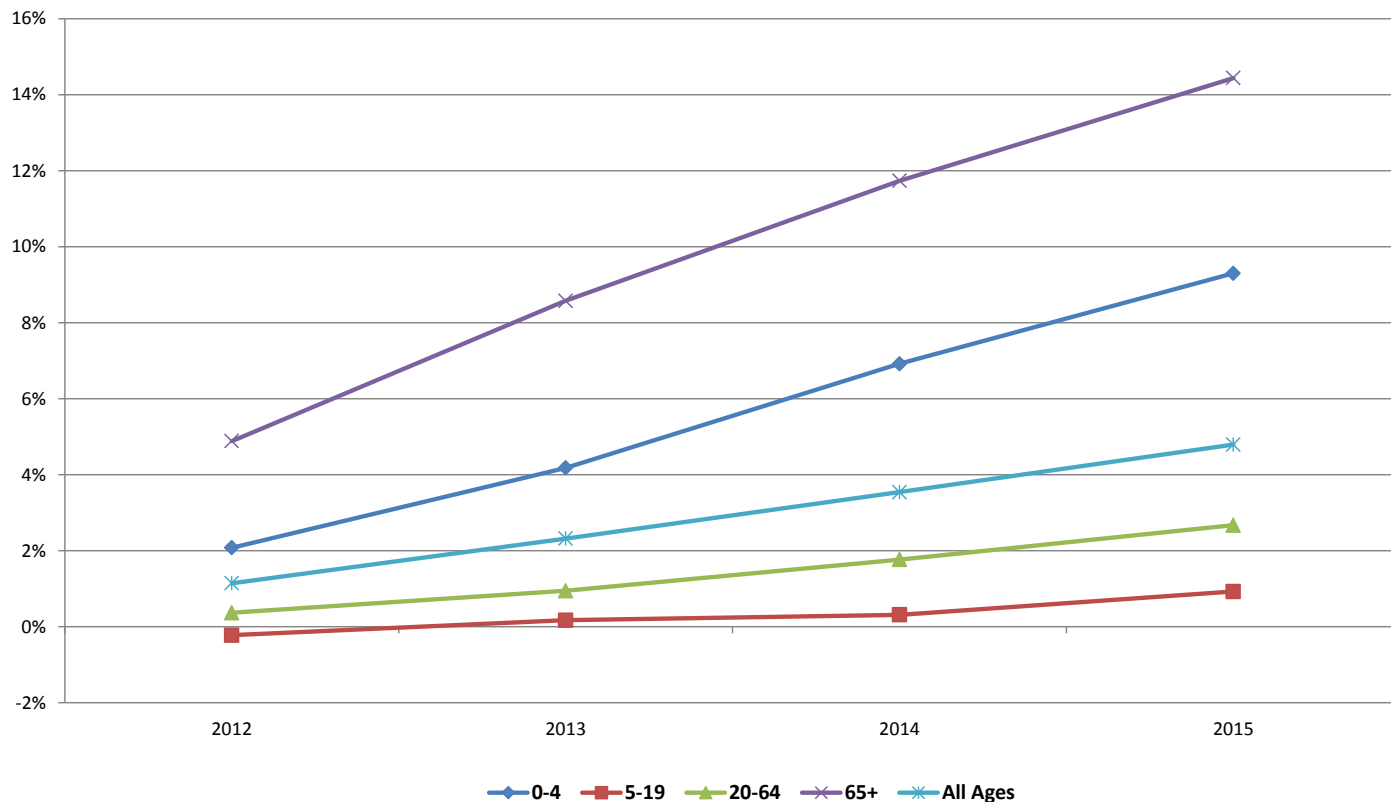
Population Growth

Projected Population Growth by Age Band, 2011 Base

Age Band	Year				
	2011	2012	2013	2014	2015
0-4	28979	29582	30190	30985	31674
5-19	86592	86400	86742	86865	87395
20-64	265533	266514	268043	270232	272627
65+	79283	83156	86083	88587	90729
All Ages	460375	465653	471065	476677	482436

**Projected Population Change in 2012 - 2015 from 2011* for
West Kent CCG by Broad Age Group**

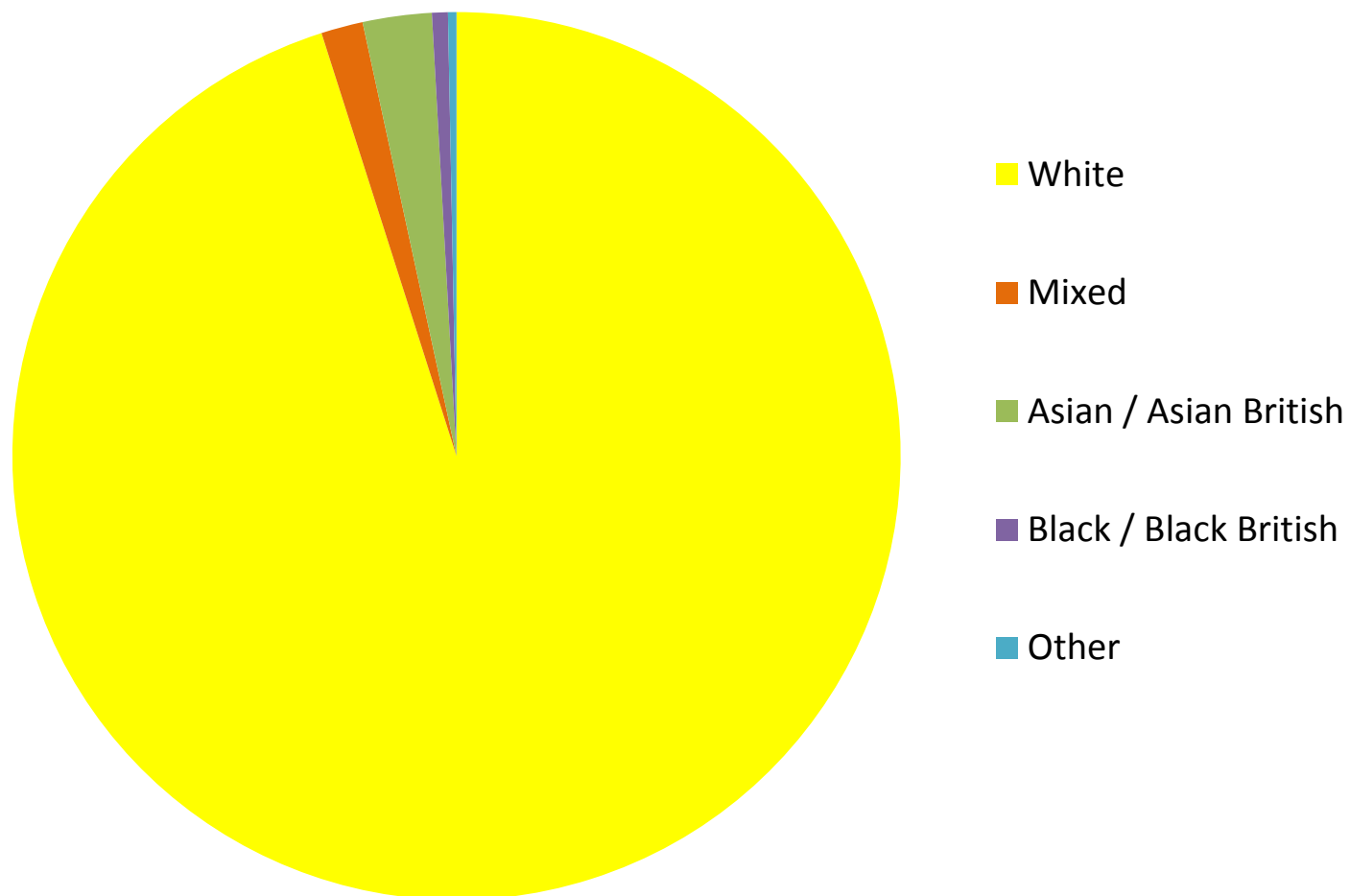
* Derived from ONS 2011 based population projections



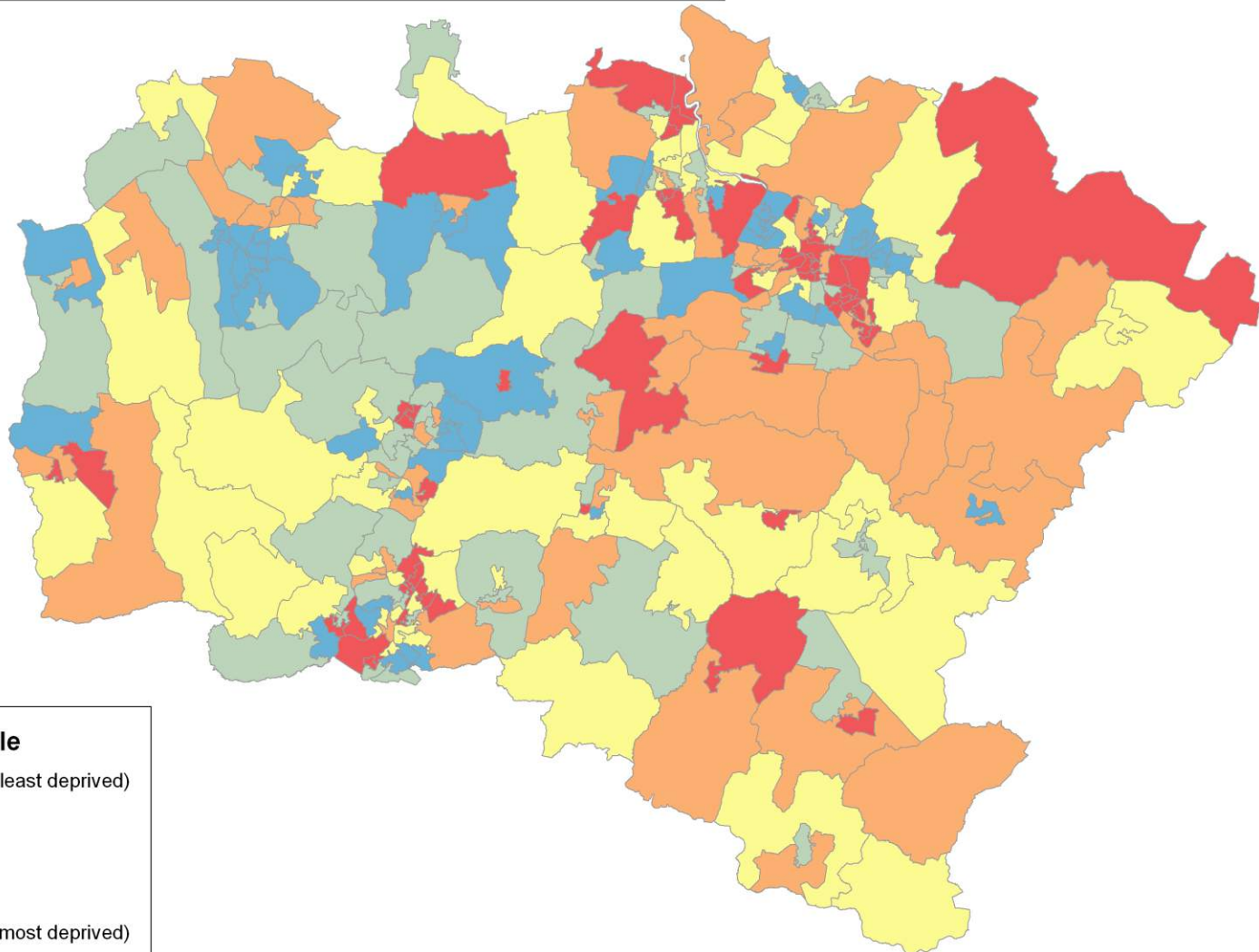
Ethnicity

Ethnicity of NHS West Kent CCG Residents

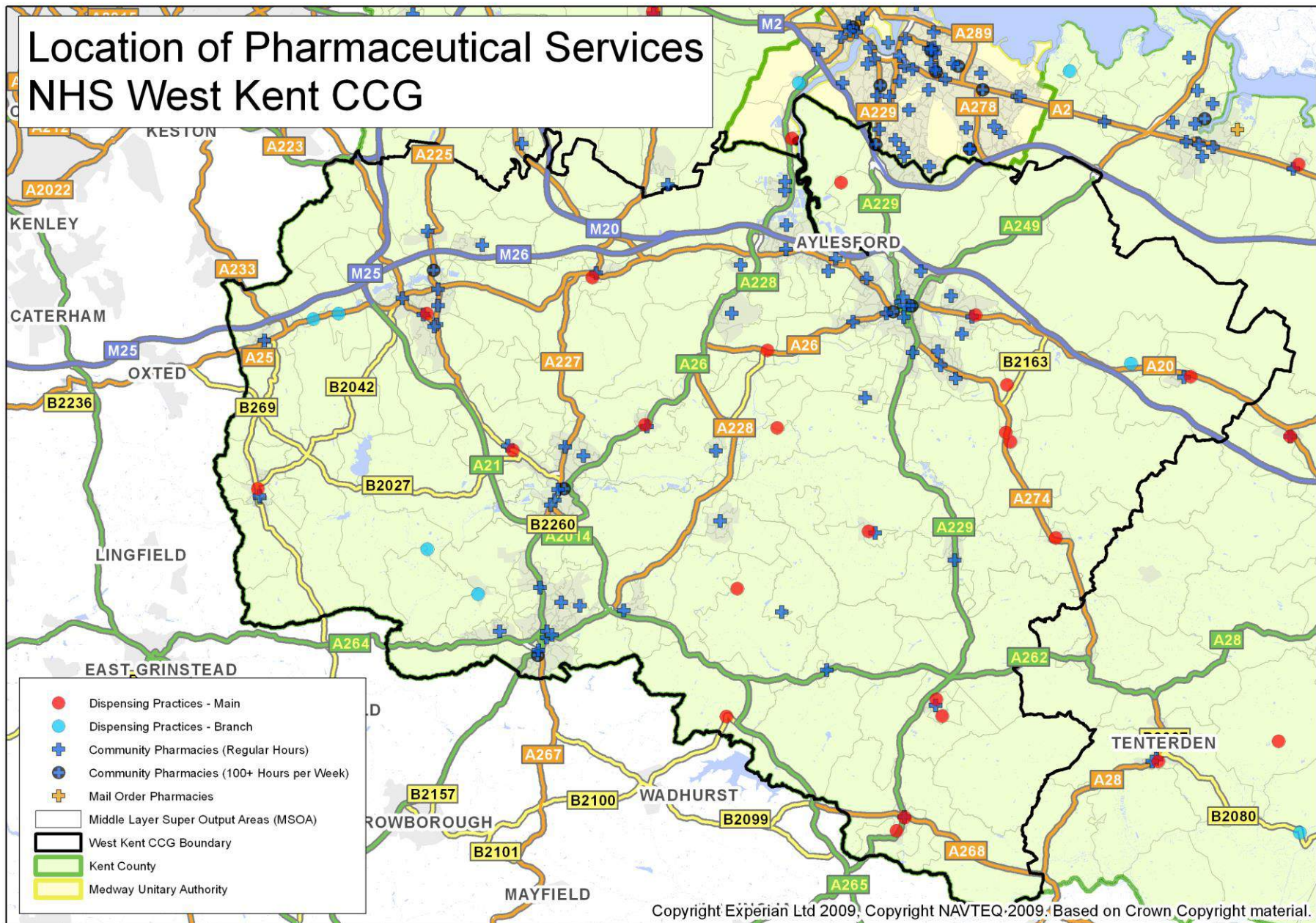
Source: Office of National Statistics Census 2011



Index of Multiple Deprivation 2010 Quintiles of LSOAs within West Kent CCG



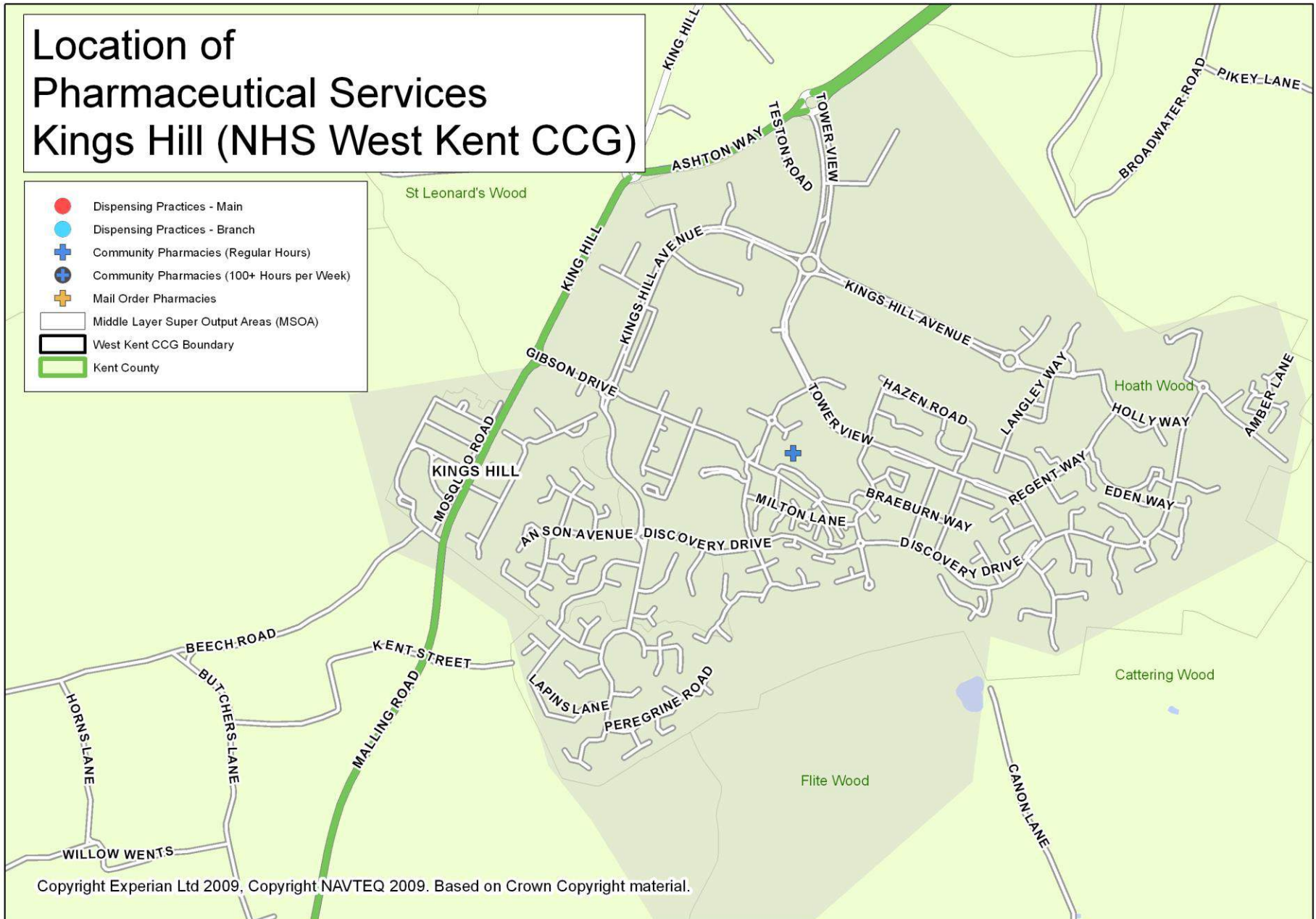
Location of Pharmaceutical Services NHS West Kent CCG



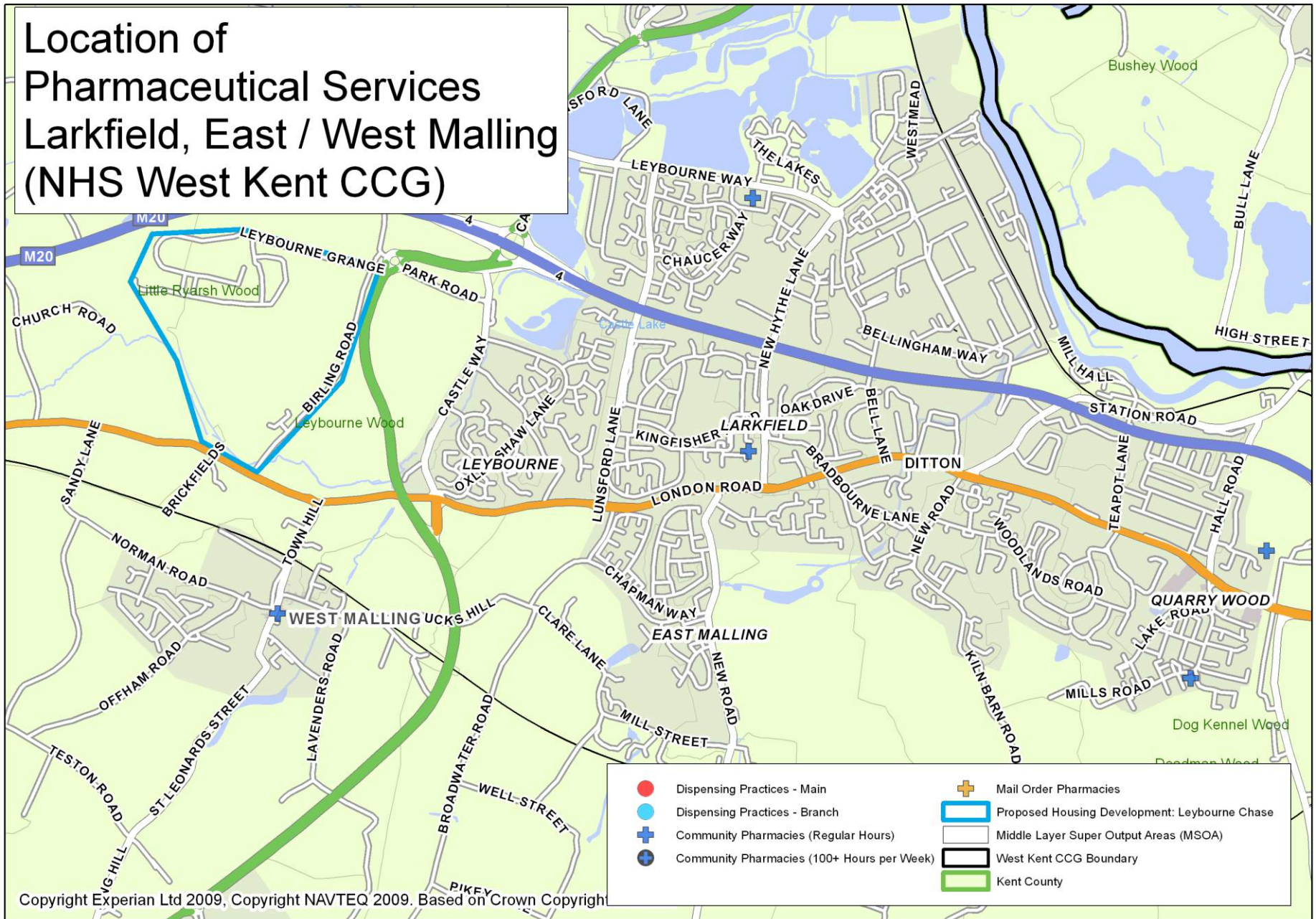


Location of Pharmaceutical Services Kings Hill (NHS West Kent CCG)

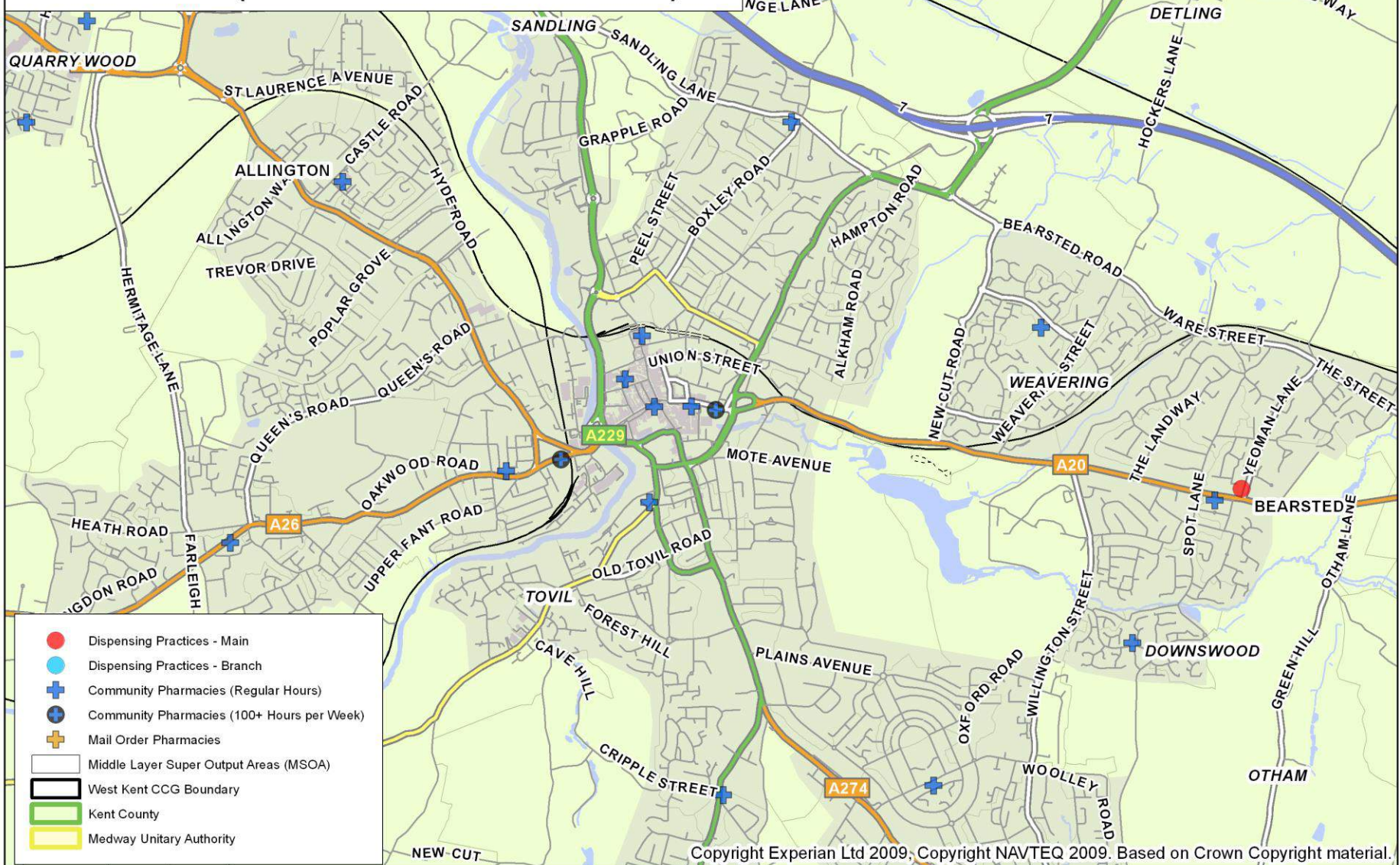
- Dispensing Practices - Main
- Dispensing Practices - Branch
- + Community Pharmacies (Regular Hours)
- + Community Pharmacies (100+ Hours per Week)
- + Mail Order Pharmacies
- Middle Layer Super Output Areas (MSOA)
- West Kent CCG Boundary
- Kent County

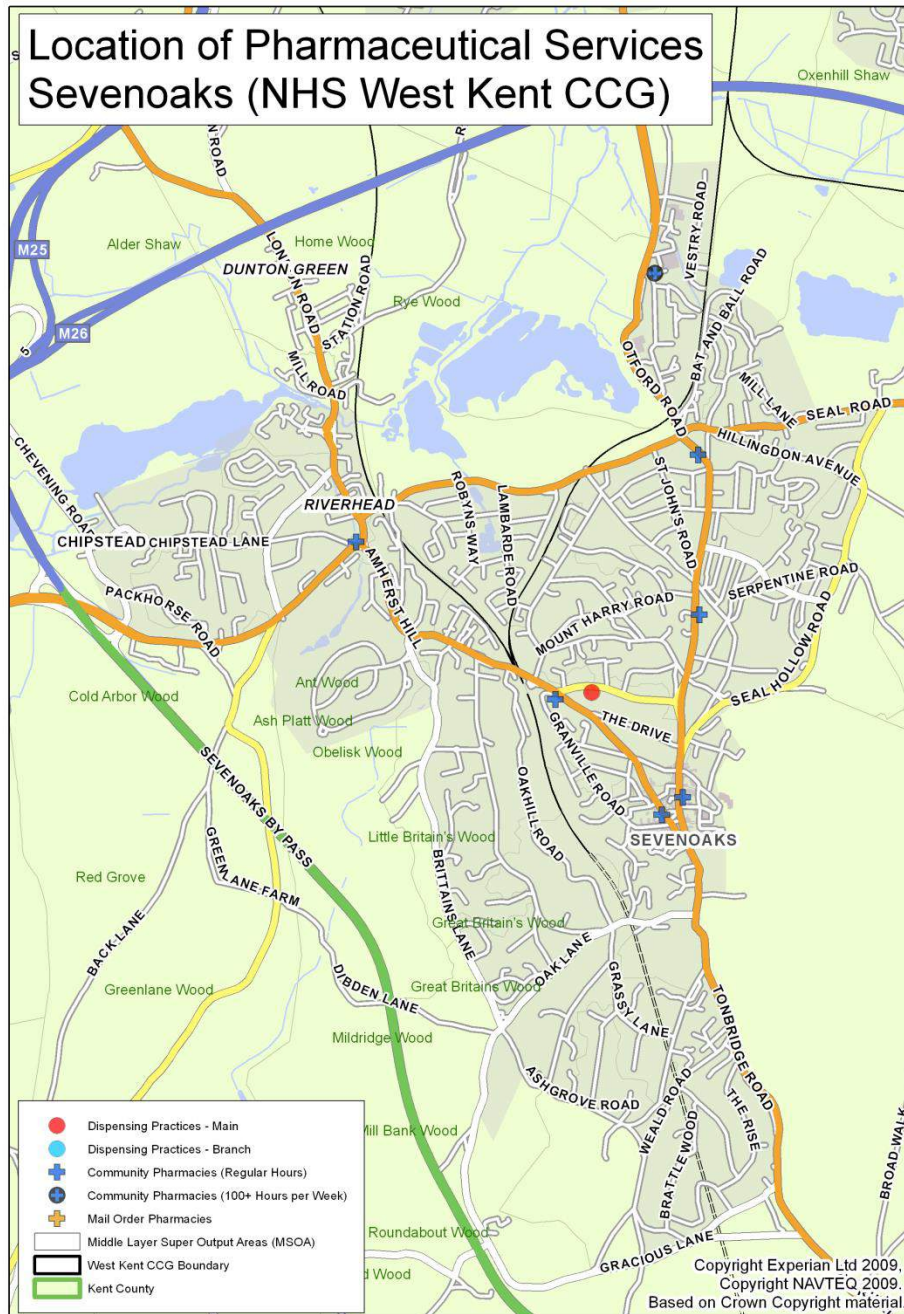


Location of Pharmaceutical Services Larkfield, East / West Malling (NHS West Kent CCG)

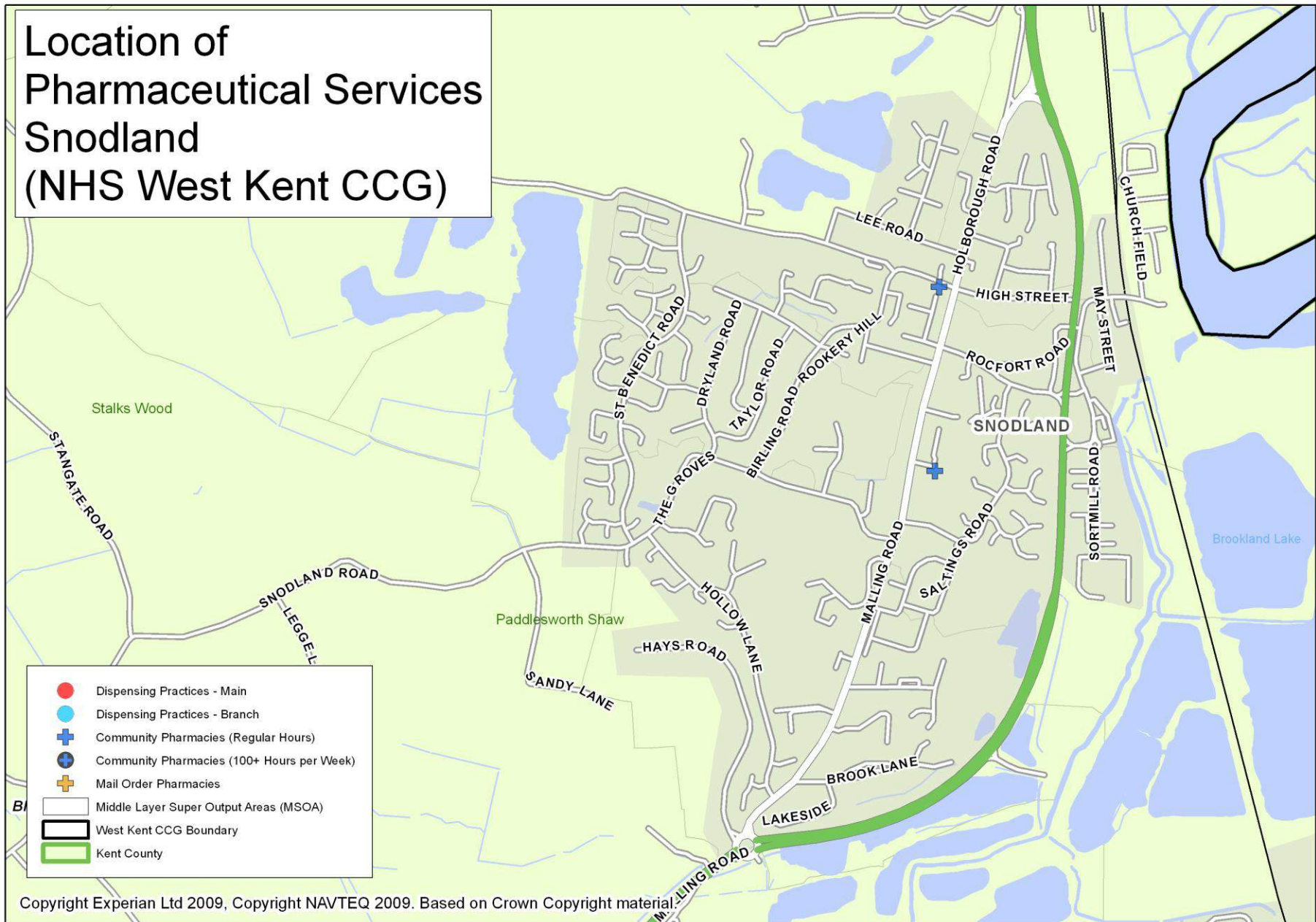


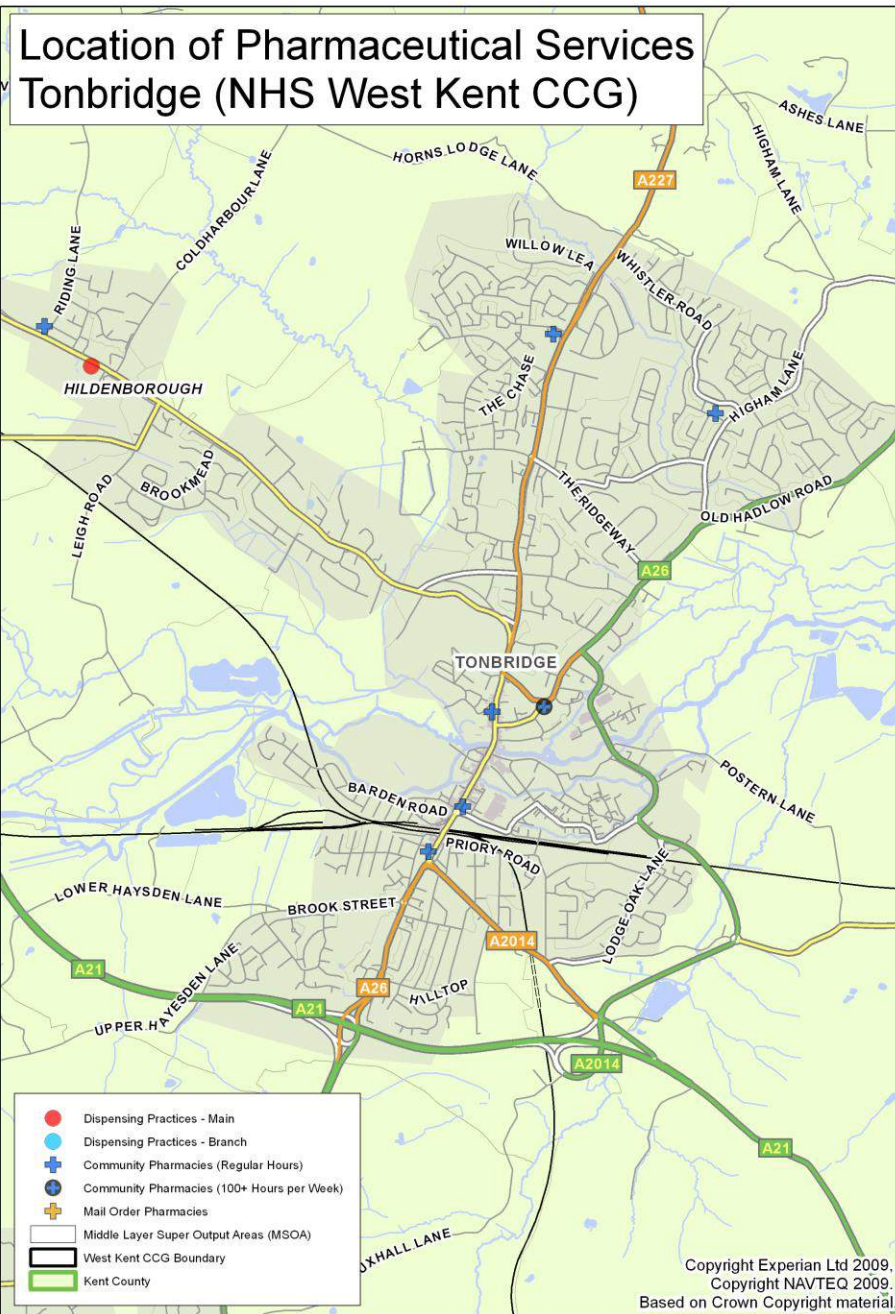
Location of Pharmaceutical Services Maidstone (NHS West Kent CCG)



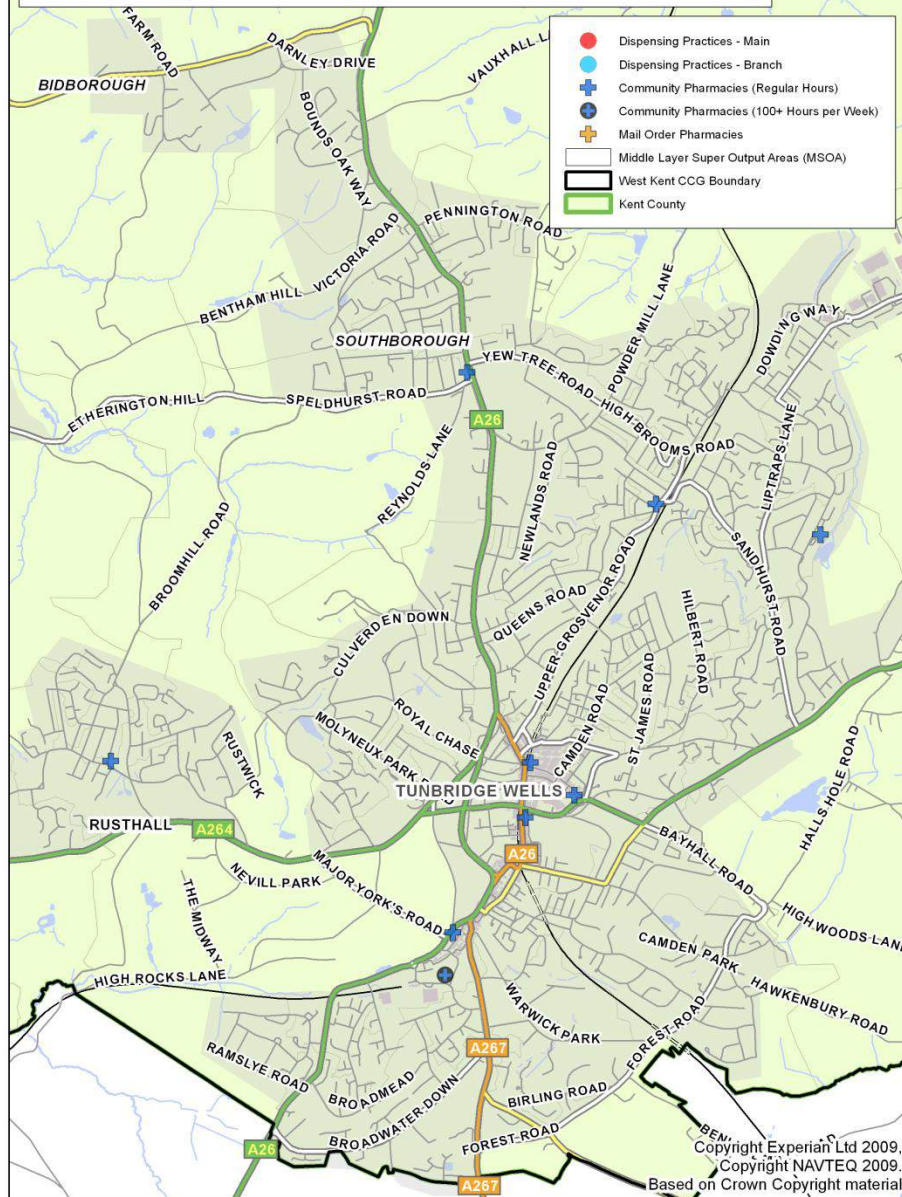


Location of Pharmaceutical Services Snodland (NHS West Kent CCG)

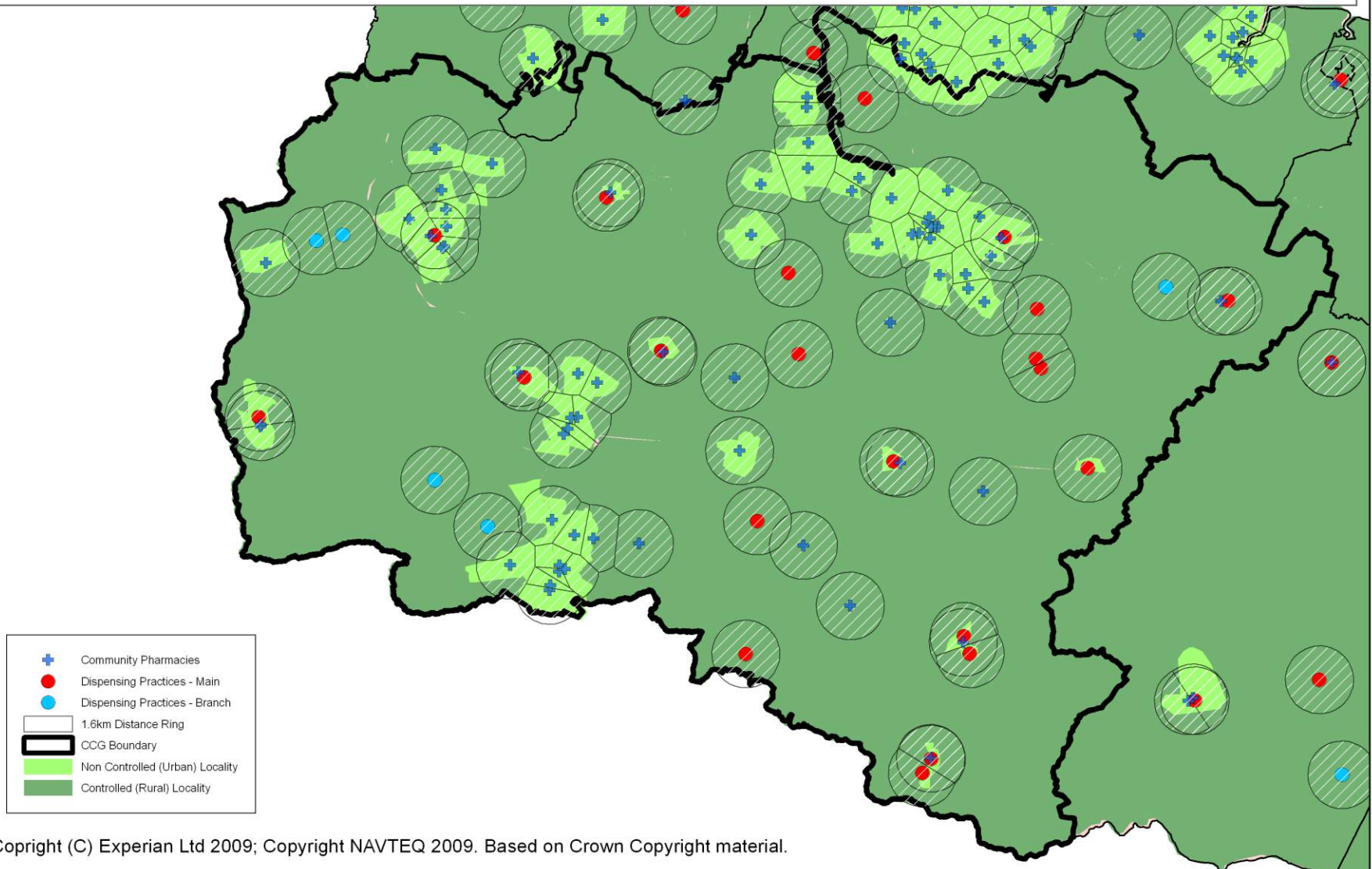




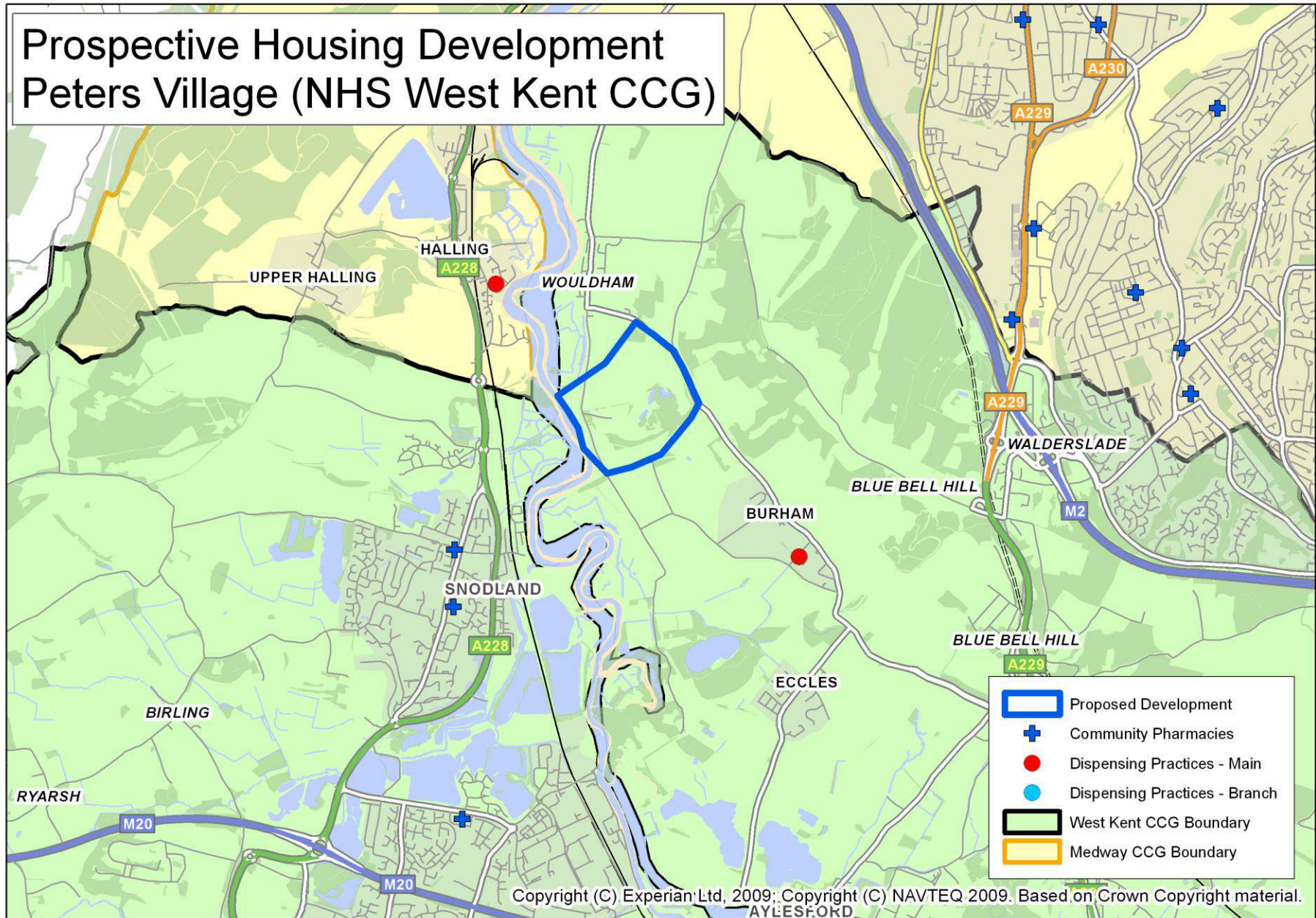
Location of Pharmaceutical Services Tunbridge Wells (NHS West Kent CCG)



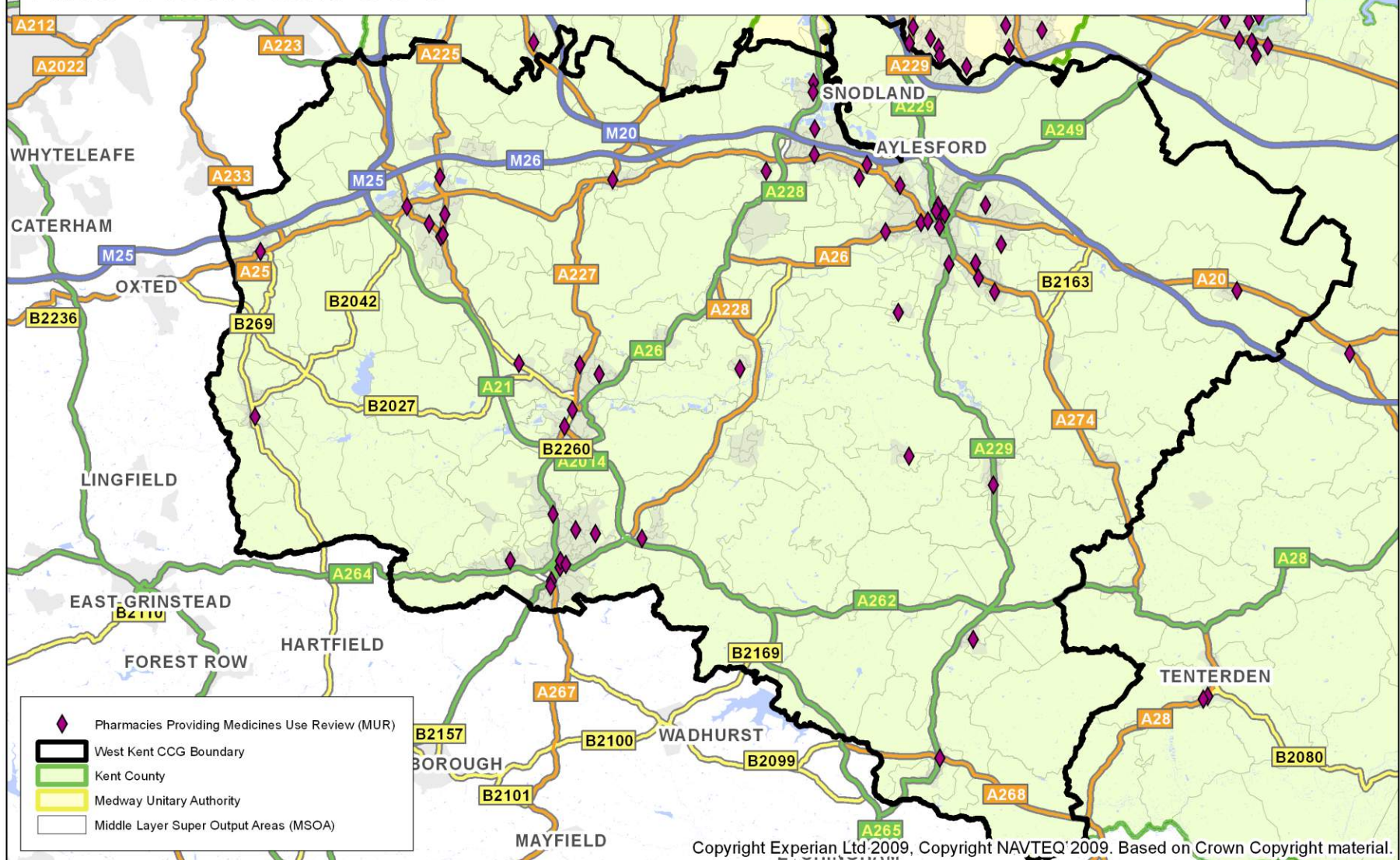
Controlled Localities and Distance Rings 1.6km Around Community Pharmacies and Dispensing Practices, West Kent CCG



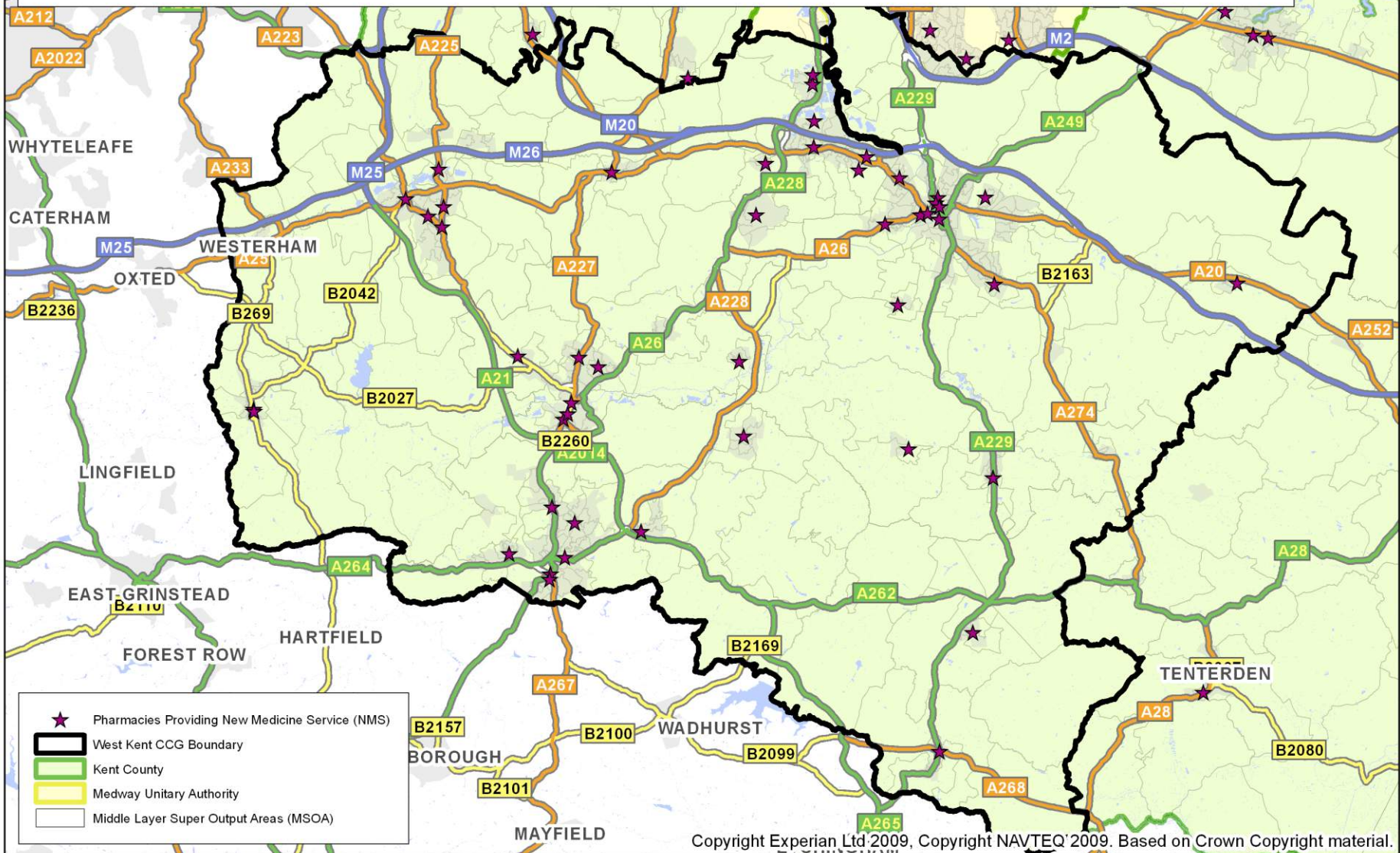
Prospective Housing Development Peters Village (NHS West Kent CCG)



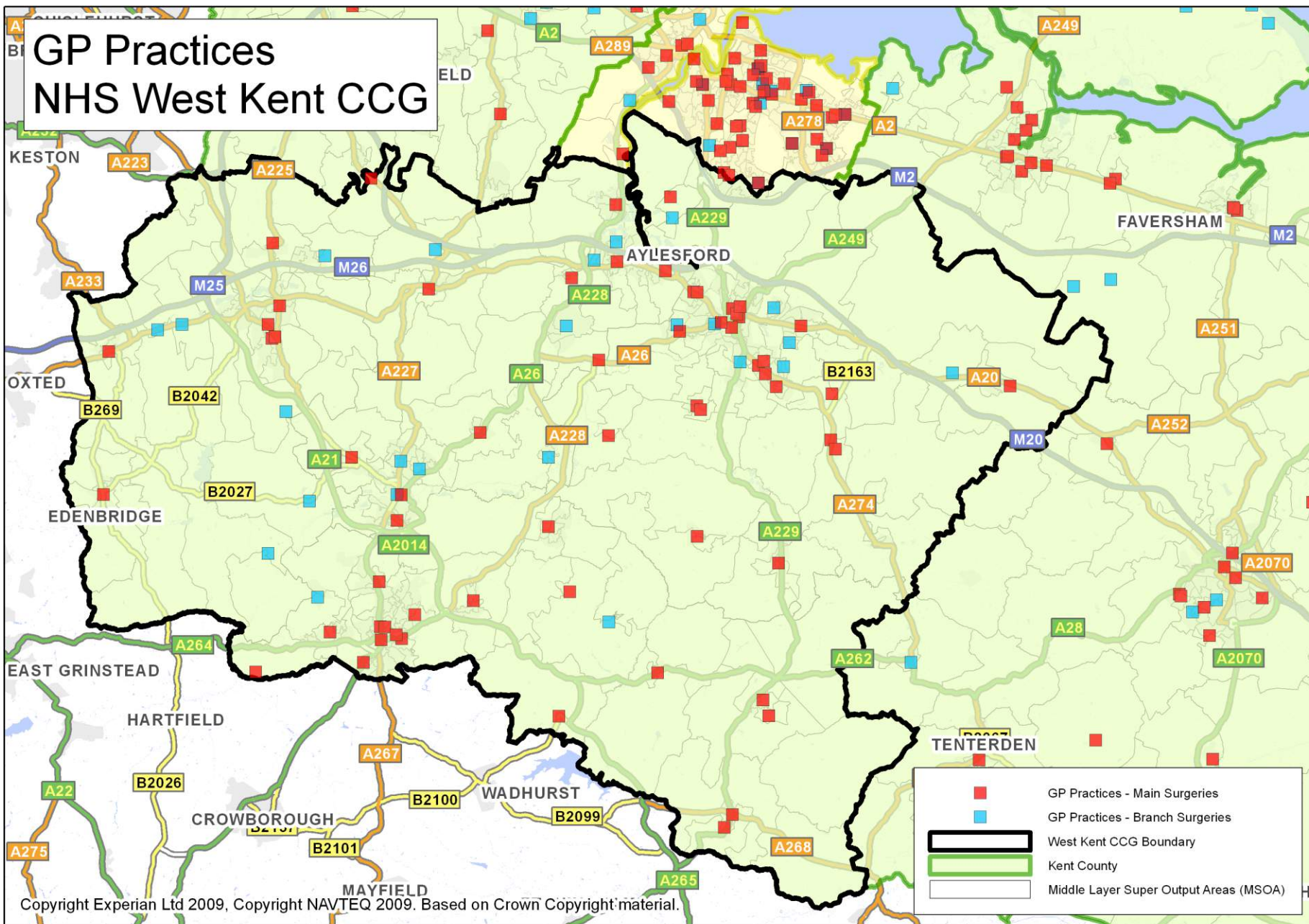
Location of Pharmacies Providing Medicines Use Review (MUR) NHS West Kent CCG



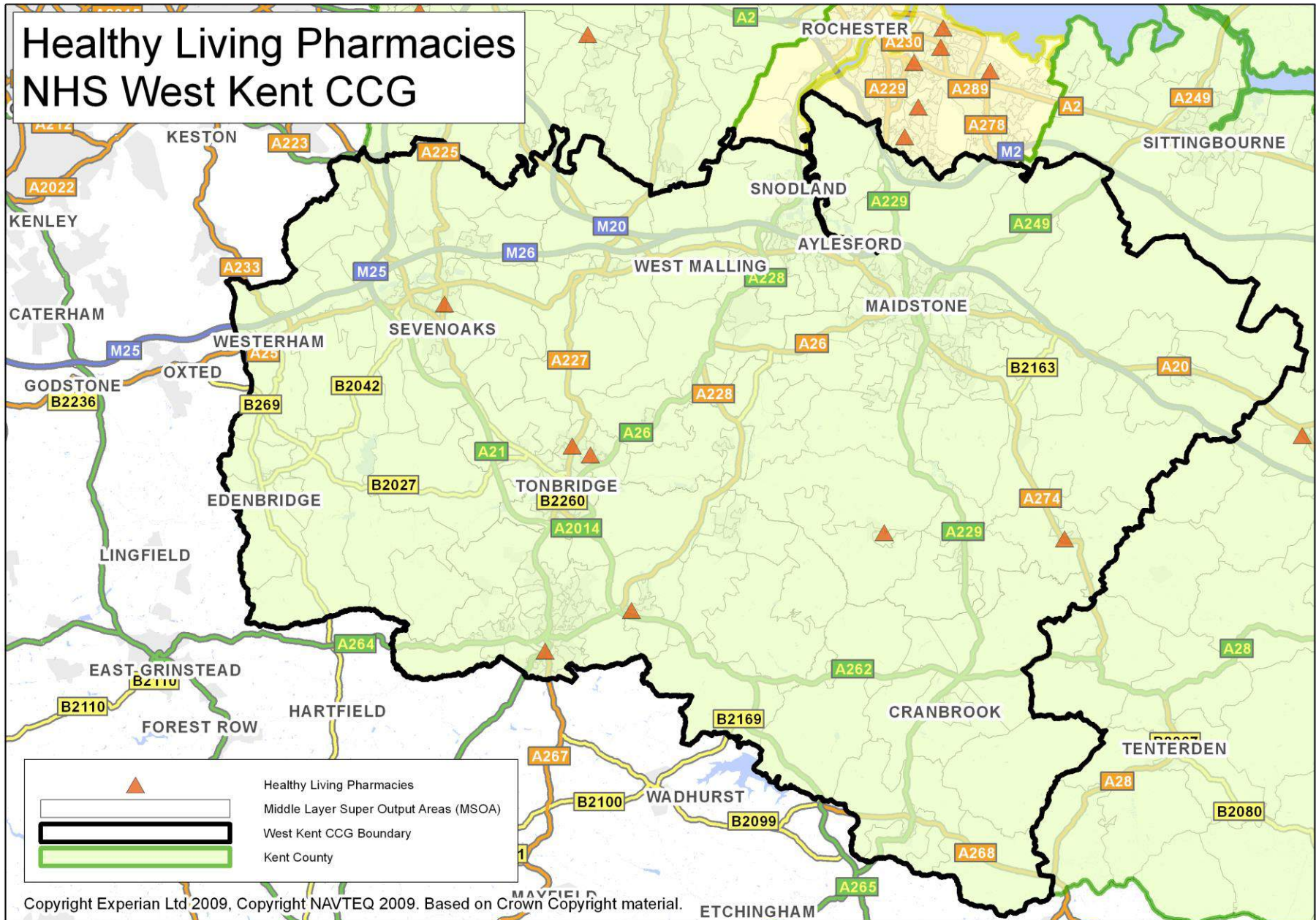
Location of Pharmacies Providing New Medicine Service (NMS) NHS West Kent CCG



GP Practices NHS West Kent CCG



Healthy Living Pharmacies NHS West Kent CCG



Pharmacies and Appliance Contractors Providing Stoma Customisation and Appliance Use Reviews NHS West Kent CCG

