

Pharmaceutical Needs Assessment – NHS Swale CCG

Supplementary data and maps
data correct as of March 2018

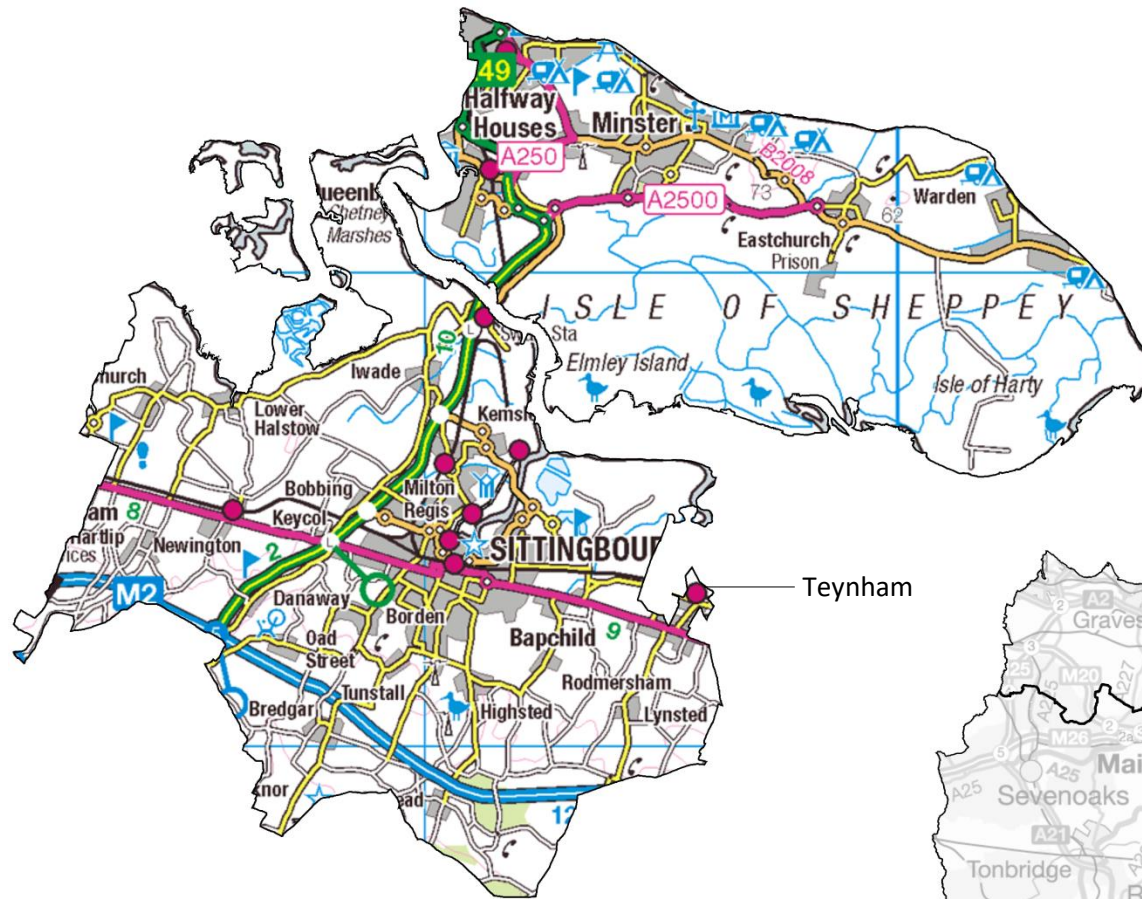
Produced by

Cheryl Clennett, Consultant Pharmacist
Julian Barlow, Senior Public Health Intelligence Analyst
Matthew Pateman, Public Health Analyst
Lauren Liddell-Young, Public Health Information Officer

Final Version
Last updated: March 2018

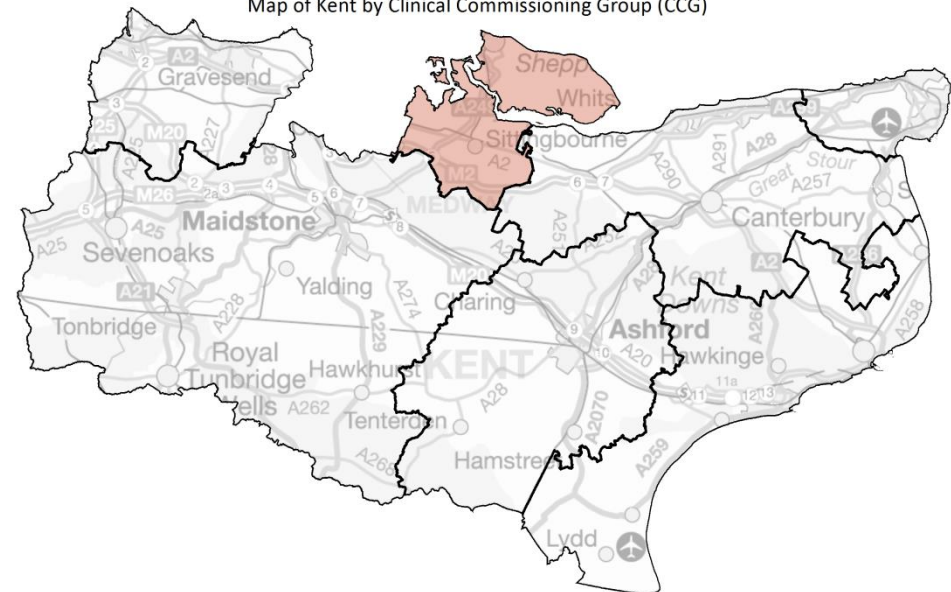
- [Orientation](#)
- [Current population](#)
- [Population density](#)
- [Population growth](#)
- [Ethnicity profile](#)
- [Index of multiple deprivation](#)
- [Location of pharmaceutical services](#)
- [Distance rings around community pharmacies](#)
- [Pharmacies providing medicines use review](#)
- [Pharmacies providing new medicines service](#)
- [Pharmacies and appliance contractors providing stoma customisation and appliance use reviews](#)
- [Healthy Living pharmacies](#)
- [General practices](#)
- [NHS flu vaccination](#)

Orientation – Swale CCG



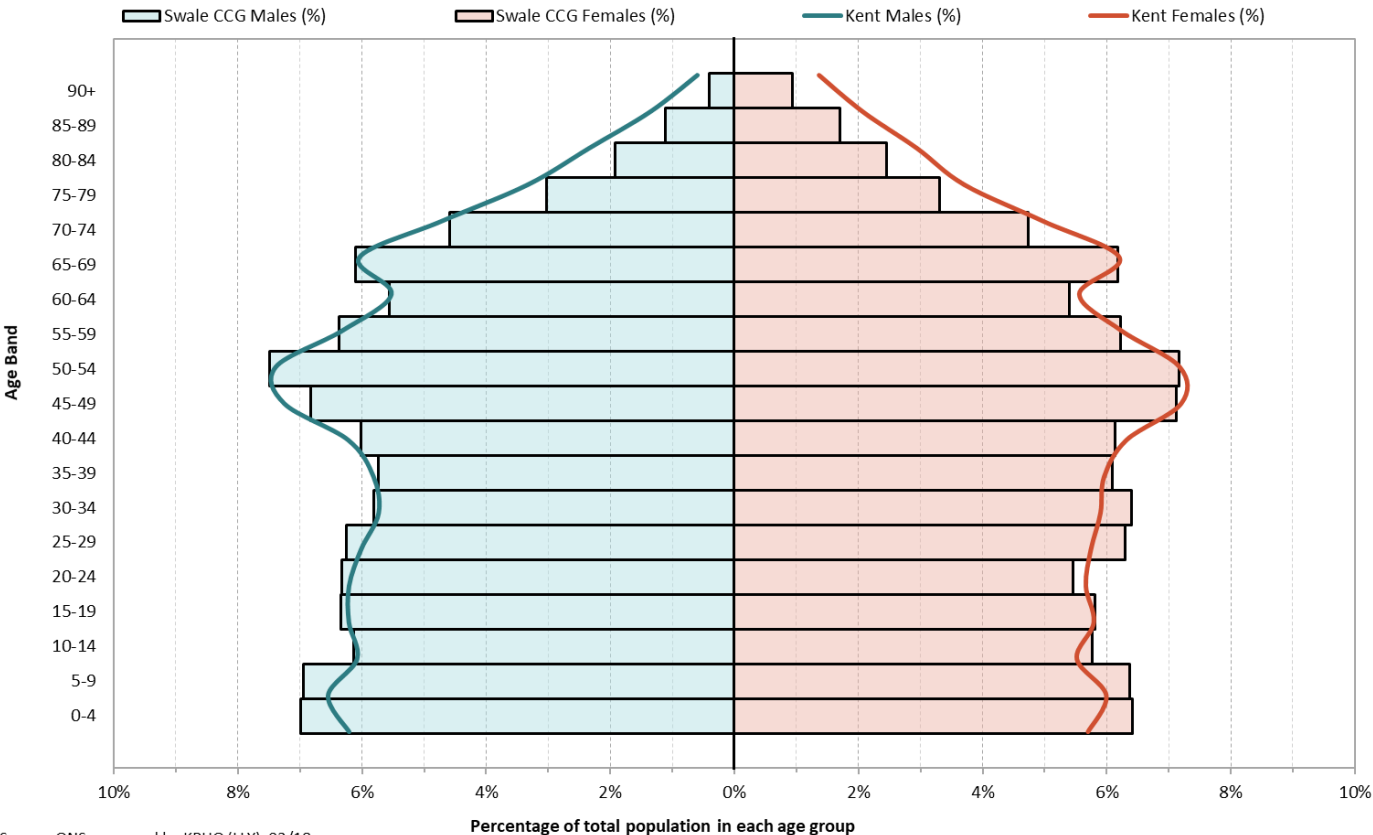
Teynham

Map of Kent by Clinical Commissioning Group (CCG)



Current population

2016 resident population in Swale CCG compared to Kent

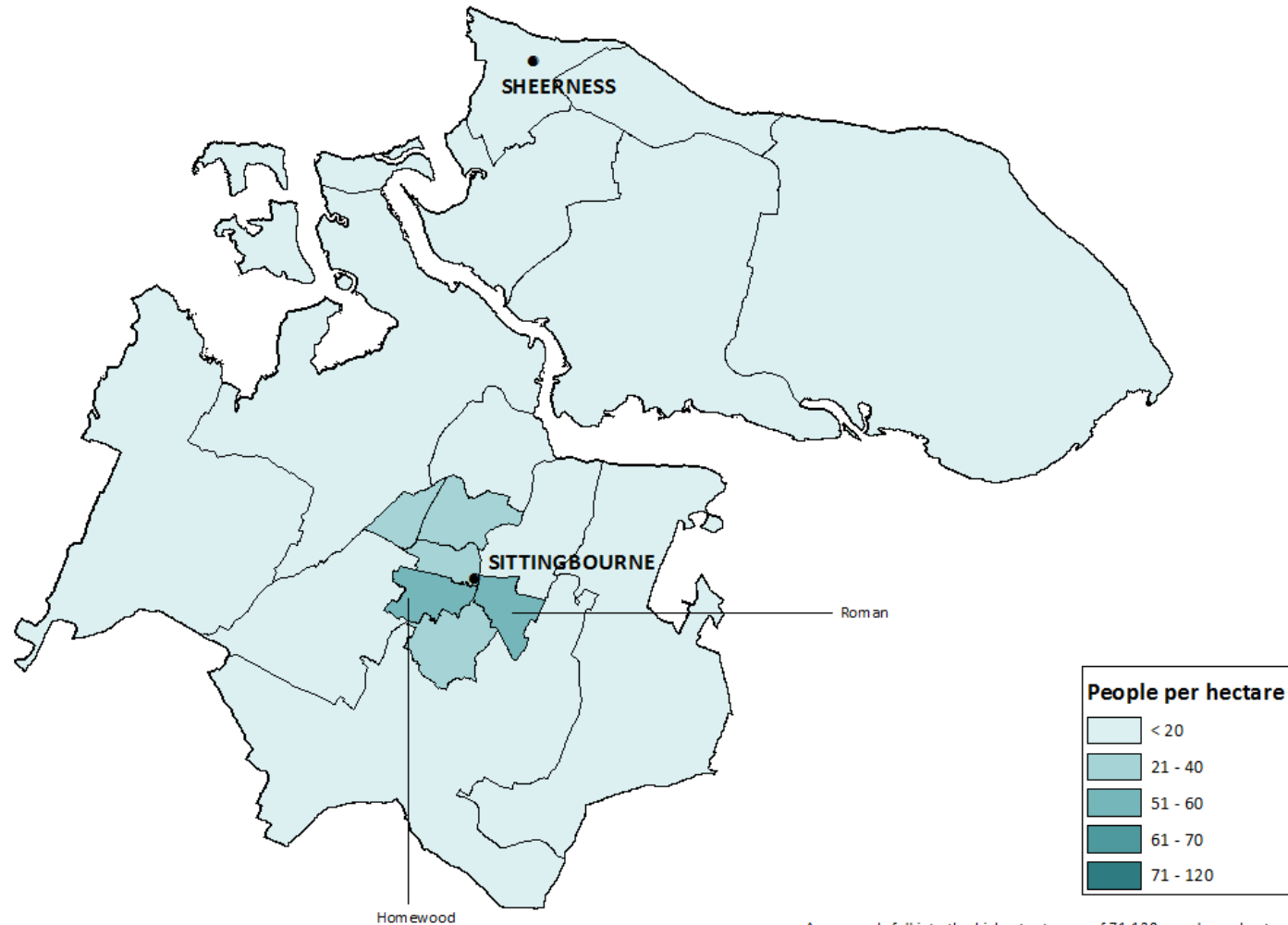


Mid-year estimates for 2016: Swale CCG

Age band	Female	Male	Persons
0-4	3,715	3,978	7,693
05-09	3,693	3,954	7,647
10-14	3,338	3,492	6,830
15-19	3,370	3,607	6,977
20-24	3,166	3,597	6,763
25-29	3,651	3,558	7,209
30-34	3,711	3,307	7,018
35-39	3,526	3,261	6,787
40-44	3,558	3,424	6,982
45-49	4,131	3,886	8,017
50-54	4,156	4,263	8,419
55-59	3,609	3,626	7,235
60-64	3,128	3,164	6,292
65-69	3,584	3,473	7,057
70-74	2,743	2,607	5,350
75-79	1,919	1,725	3,644
80-84	1,418	1,092	2,510
85-89	982	633	1,615
90	546	232	778
All ages	57,944	56,879	114,823

Source: ONS, prepared by KPHO (LLY), 02/18

Population density (2015, by ward)

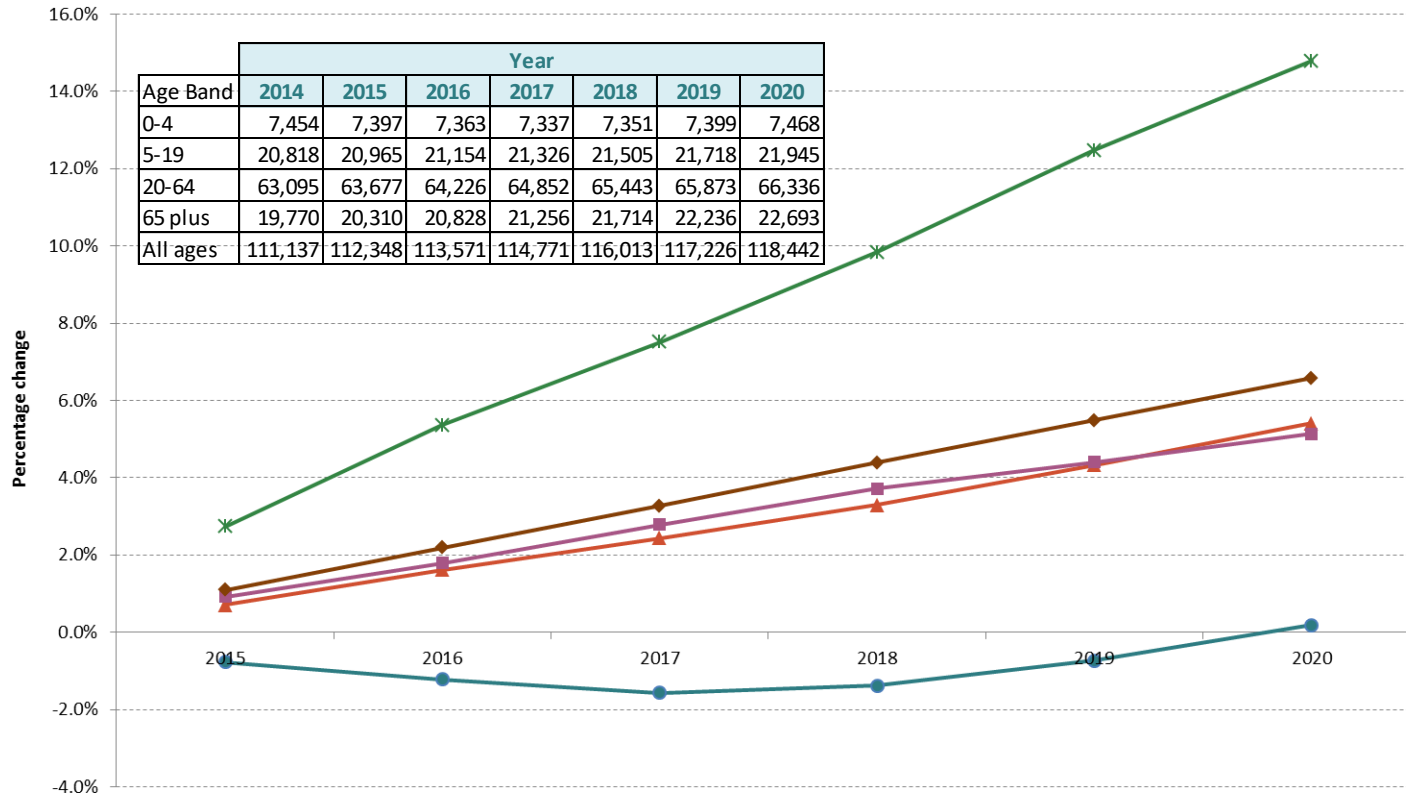


As no wards fell into the highest category of 71-120 people per hectare, wards with the next highest population density score have been labelled

Population growth

Population Growth: NHS Swale CCG for 2015 to 2020 from 2014

0-4 5-19 20-64 65 plus All ages



The chart shows the percentage growth of Swale CCG's projected population from 2015 to 2020.

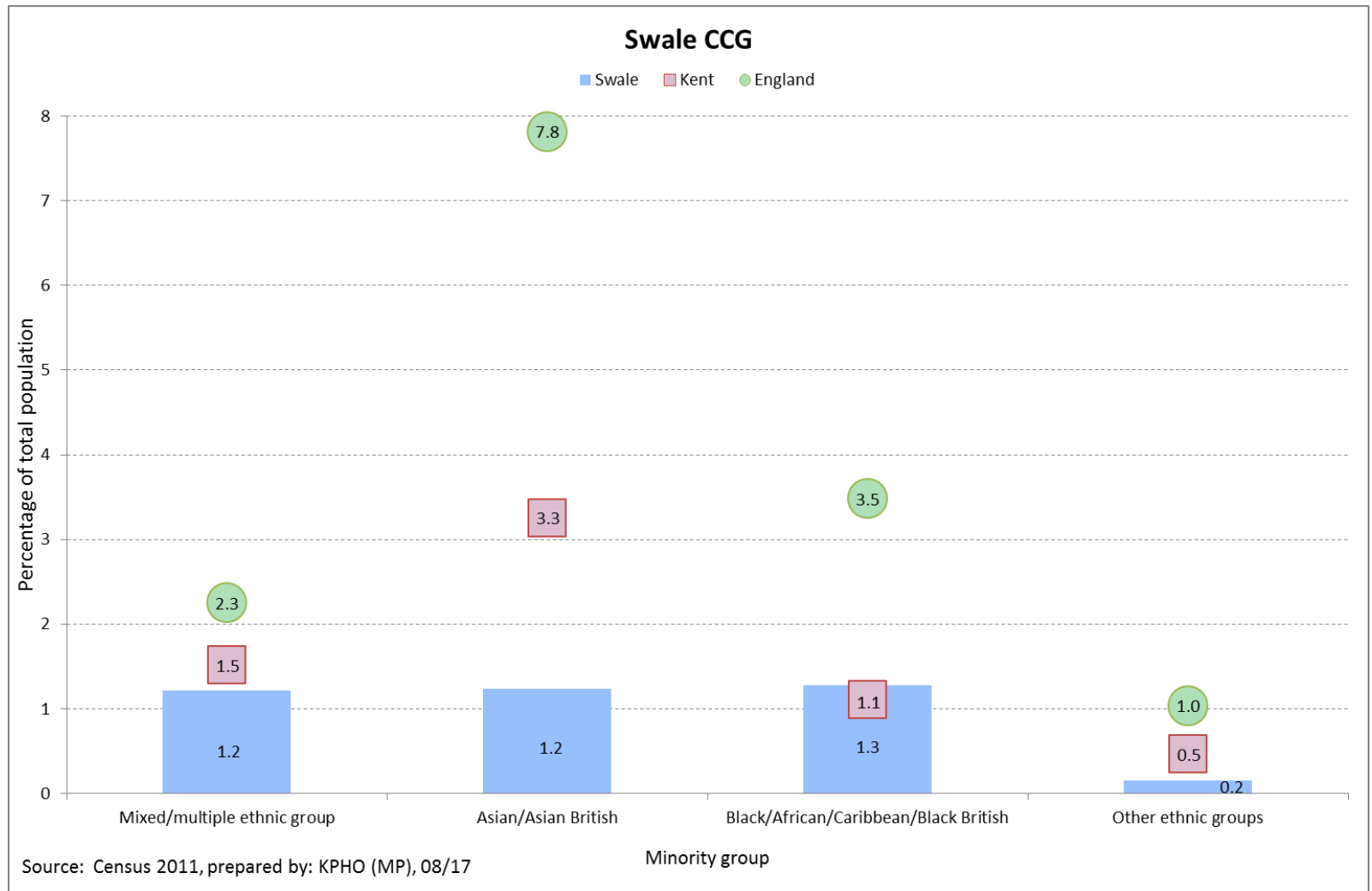
This uses a baseline of 2014 population to calculate the percentage growth and is split into different age-bands.

The table provides the total number of the different age-bands for the baseline population (2014) and the projected population from 2015 to 2020.

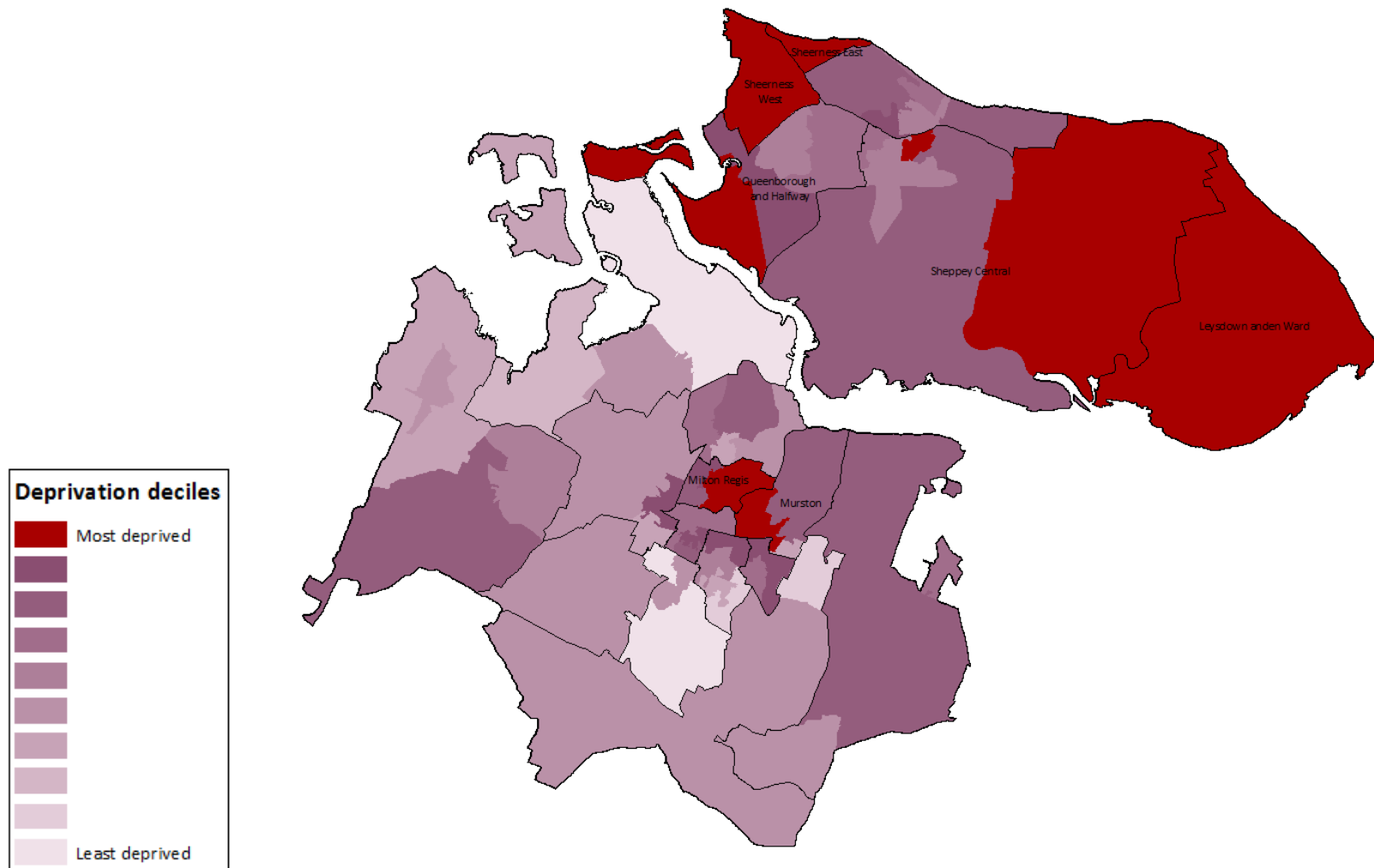
While population is increasing for all age bands the greatest growth is seen in the 65 years and over age band.

Source: ONS 2014 based population projections, prepared by KPHO (LLY), 07/17

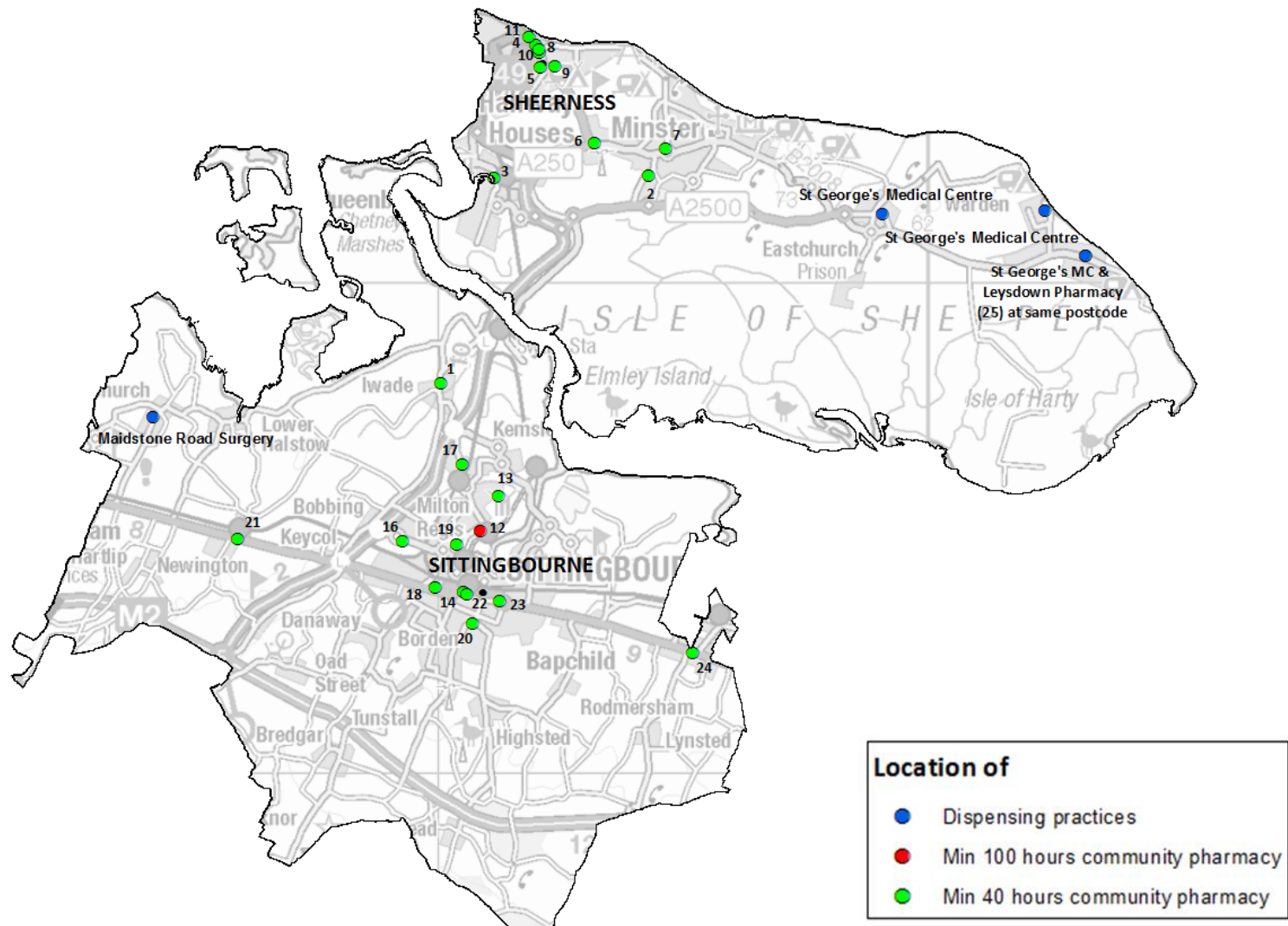
Ethnicity profile



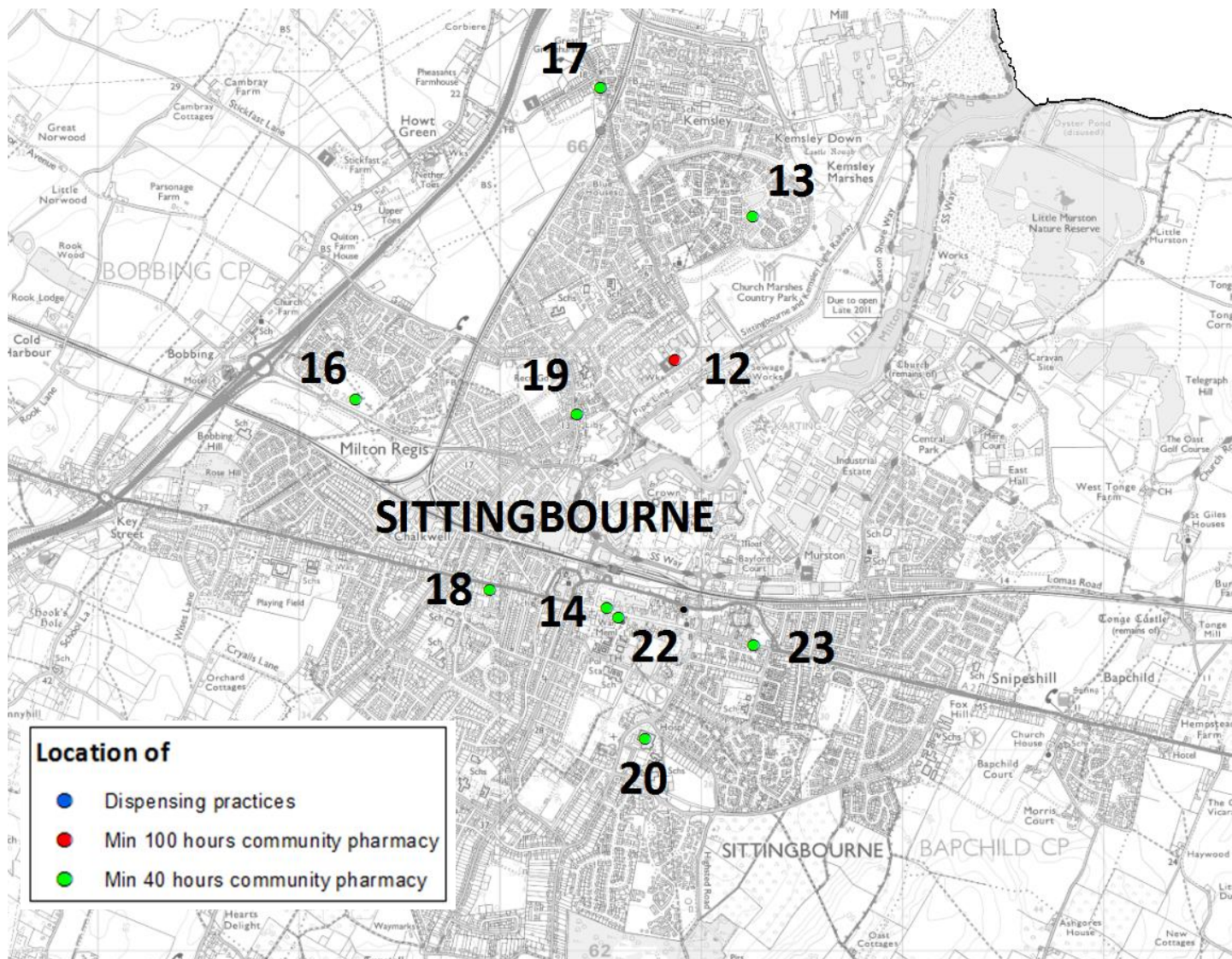
Index of multiple deprivation (2015, Kent deciles)



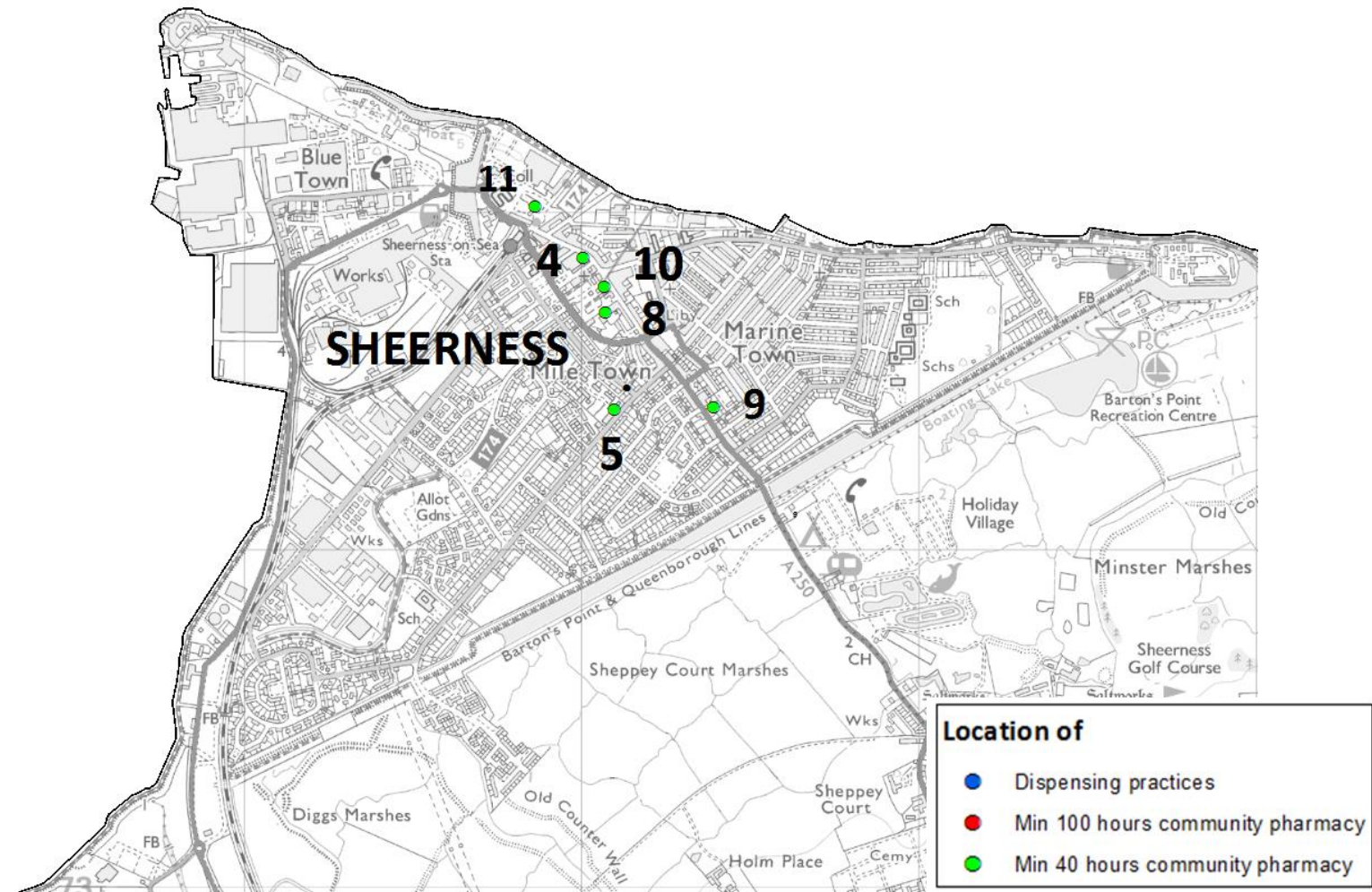
Providers of pharmaceutical services



Providers of pharmaceutical services: Sittingbourne



Providers of pharmaceutical services: Sheerness

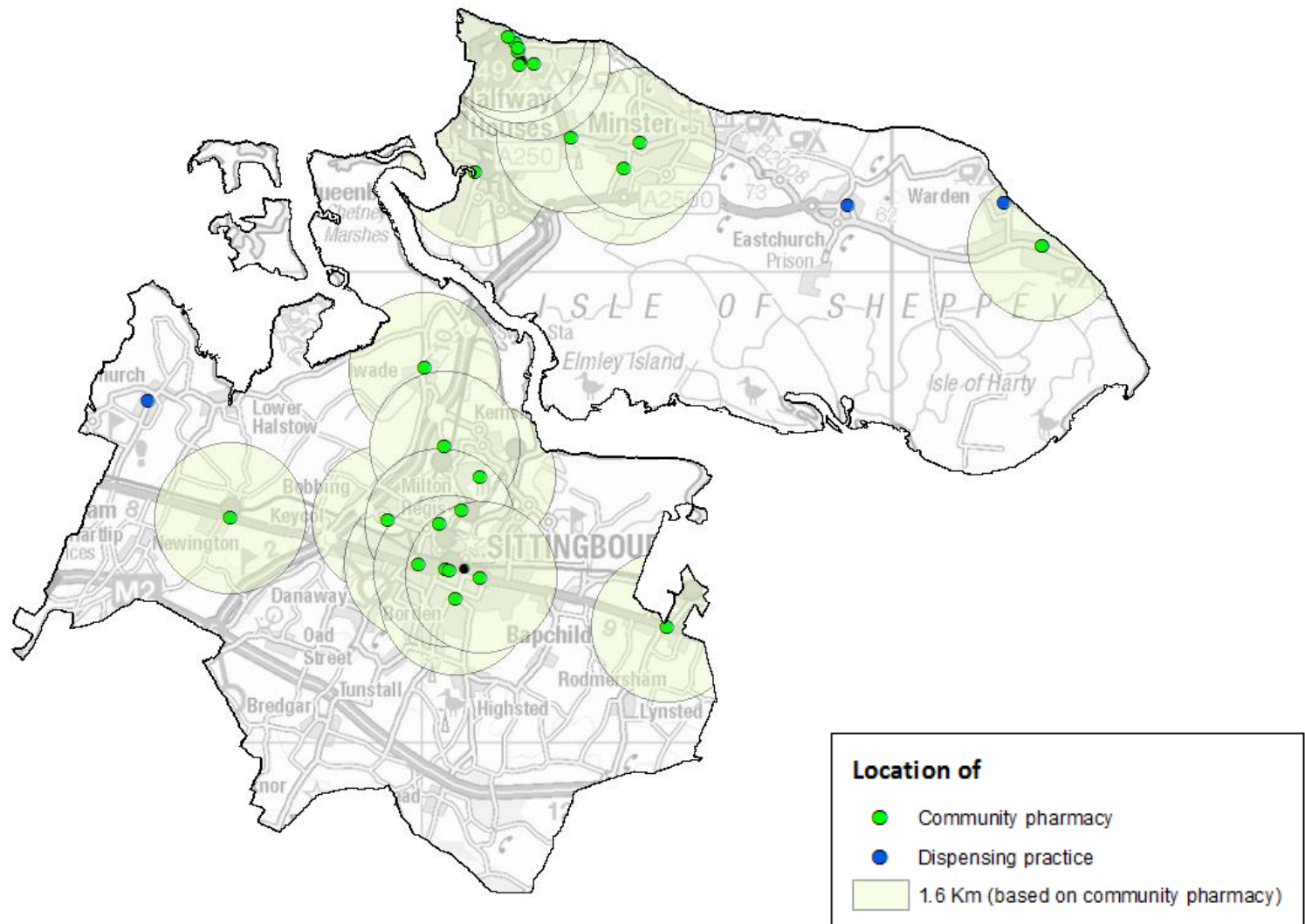


Providers of pharmaceutical services

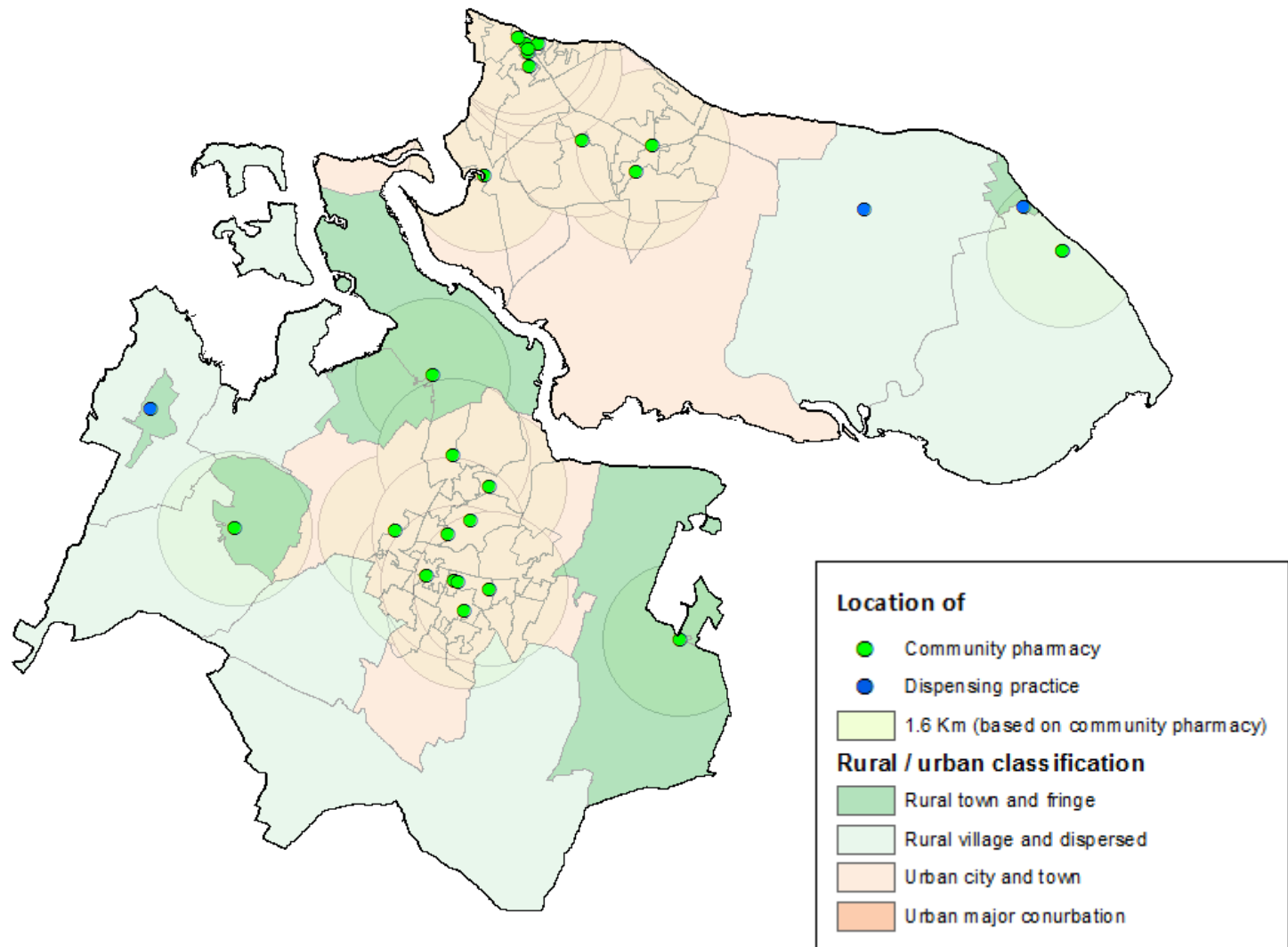
Community Pharmacies					
ID	Locality	Ward (2011)	Trading name	Postcode	Contract
1	Iwade	Iwade & Lower Halstow	Iwade Pharmacy	ME98SH	Min 40 hours
2	Minster	Sheppey Central	Sheppey Hospital	ME123LT	Min 40 hours
3	Queenborough	Queenborough & Halfway	Well	ME115AY	Min 40 hours
4	Sheerness	Sheerness West	Boots	ME121NT	Min 40 hours
5	Sheerness	Sheerness West	Delmergate Ltd	ME121QU	Min 40 hours
6	Sheerness	Queenborough & Halfway	Halfway Pharmacy	ME123JD	Min 40 hours
7	Sheerness	Minster Cliffs	Minster Pharmacy	ME122RW	Min 40 hours
8	Sheerness	Sheerness West	Mistry Chemists	ME121UA	Min 40 hours
9	Sheerness	Sheerness East	Paydens	ME121TP	Min 40 hours
10	Sheerness	Sheerness West	Superdrug	ME121TX	Min 40 hours
11	Sheerness	Sheerness East	Tesco	ME121RH	Min 40 hours
12	Sittingbourne	Milton Regis	Asda	ME102PD	Min 100 hours
13	Sittingbourne	Kemsley	Austinoma	ME102TZ	Min 40 hours
14	Sittingbourne	St Michaels	Boots	ME104PL	Min 40 hours
16	Sittingbourne	Grove	Kamsons	ME105AB	Min 40 hours
17	Sittingbourne	Kemsley	Kemsley	ME102ST	Min 40 hours
18	Sittingbourne	Chalkwell	Lloyds Pharmacy	ME101NQ	Min 40 hours
19	Sittingbourne	Milton Regis	Lloyds Pharmacy	ME102AN	Min 40 hours
20	Sittingbourne	St Michaels	Memorial Pharmacy	ME104XX	Min 40 hours
21	Sittingbourne	Hartlip, Newington & Upchurch	Newington Pharmacy	ME97JL	Min 40 hours
22	Sittingbourne	St Michaels	Superdrug	ME104AJ	Min 40 hours
23	Sittingbourne	St Michaels	Well	ME104BL	Min 40 hours
24	Teynham	Teynham & Lynsted	Greenstreet	ME99QL	Min 40 hours
25	Leysdown	Leysdown & Warden	Leysdown Pharmacy	ME124RE	Min 40 hours

Dispensing Practices						
ID	Practice Code	Practice name	Main site?	Dispensing at site?	Postcode	Ward (2011)
1	G82057	St George's Medical Centre	N	Yes	ME124RE	Leysdown & Warden
2	G82057	St George's Medical Centre	N	Yes	ME124PS	Leysdown & Warden
3	G82057	St George's Medical Centre	N	Yes	ME124BN	Sheppey Central
4	G82180	Maidstone Road Surgery (part of Medway CCG)	N	Yes	ME97AU	Hartlip, Newington & Upchurch

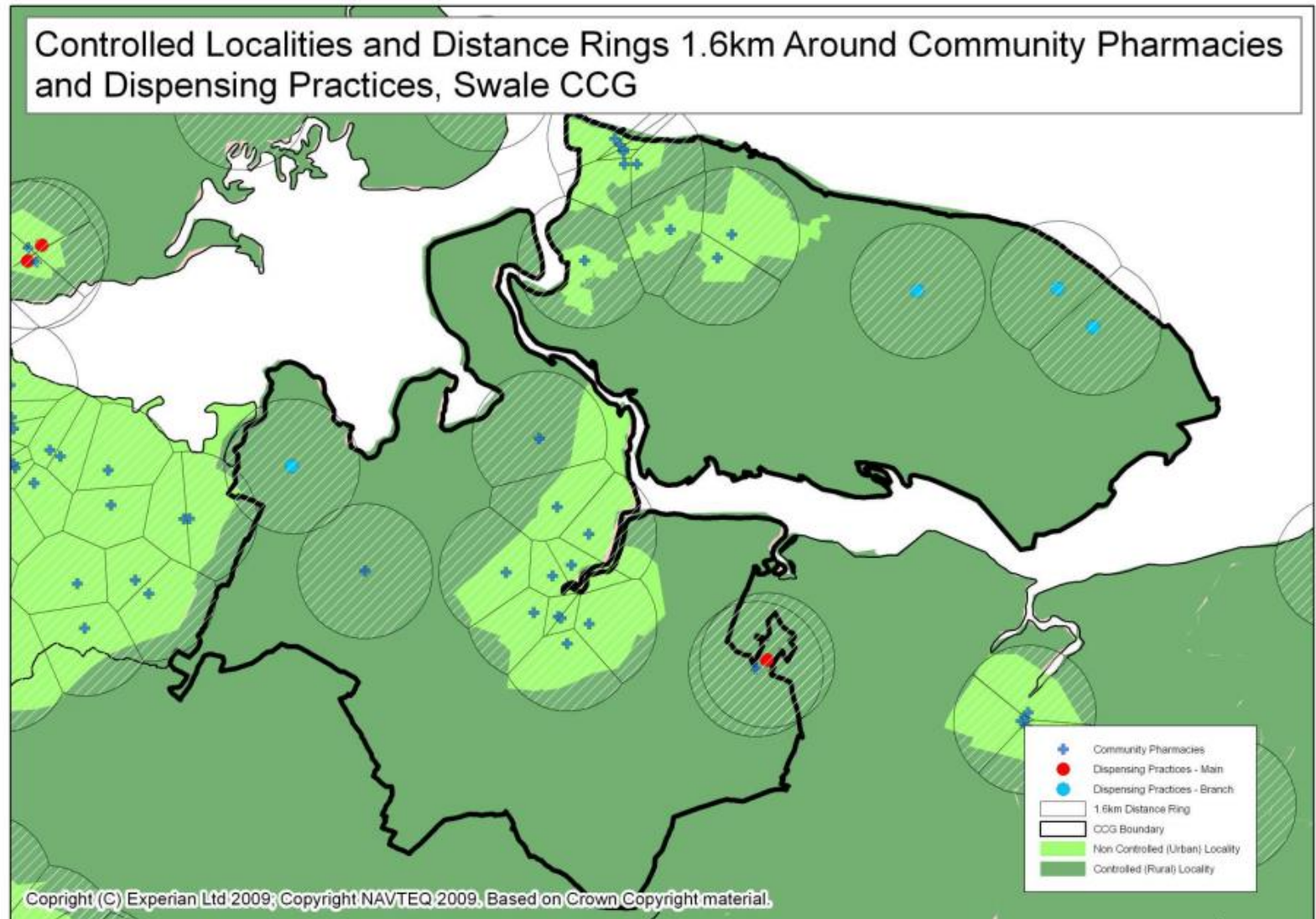
Distance rings (1.6km) around community pharmacies



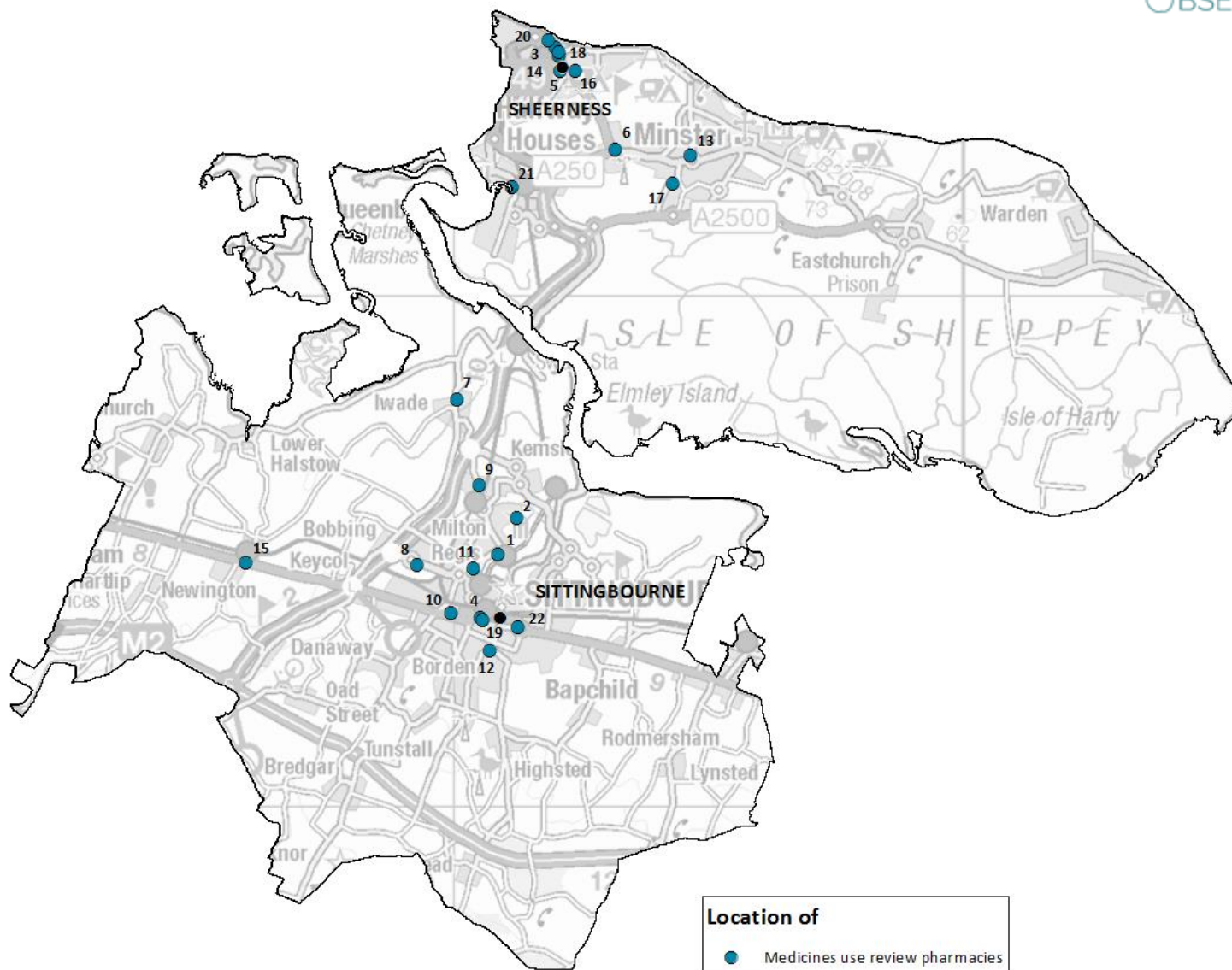
Distance rings (1.6km) around community pharmacies with rural urban classification (2011)



Controlled localities and distance rings



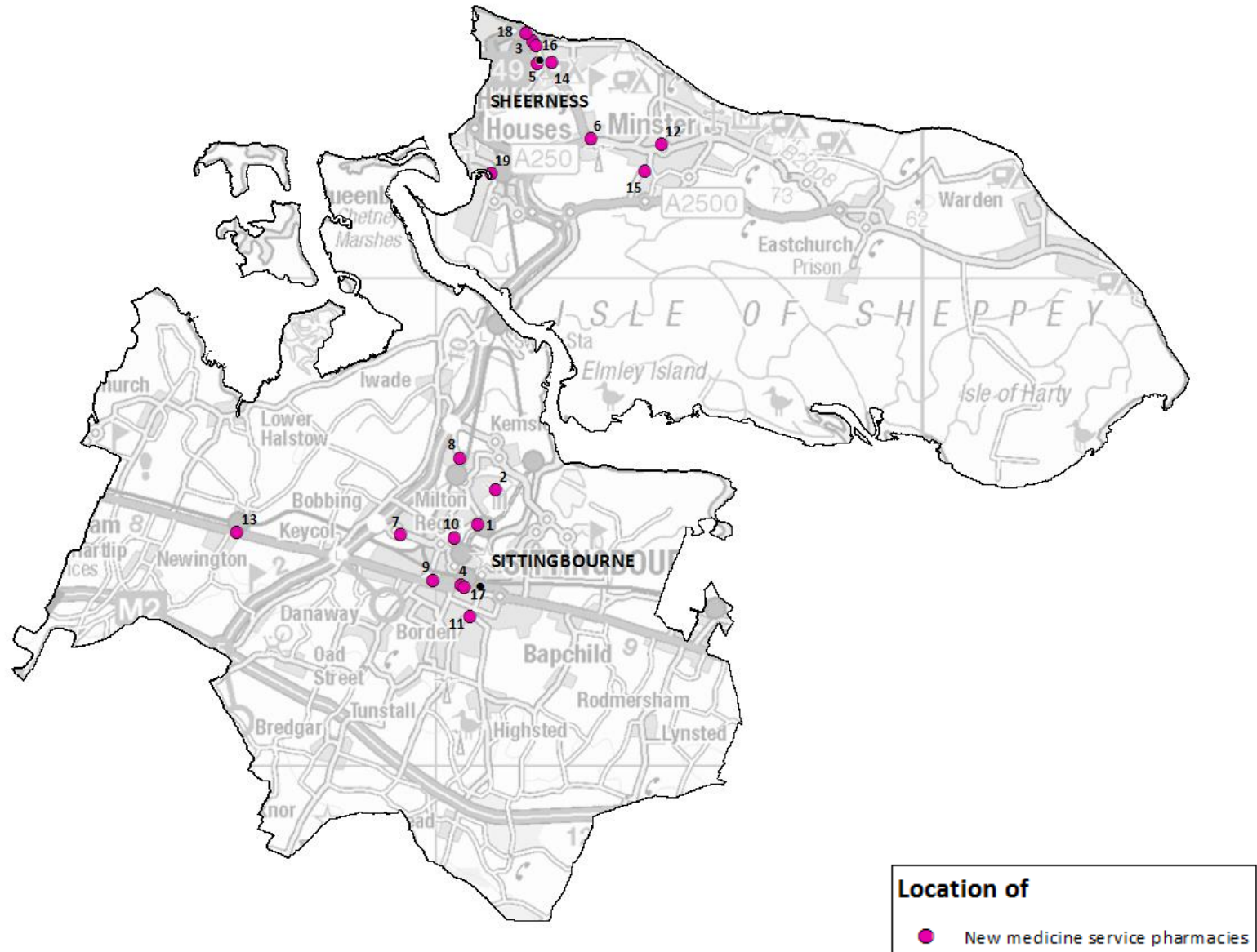
Pharmacies providing medicines use review



Pharmacies providing medicines use review

Medicine use review pharmacies			
ID	Pharmacy Name	Postcode	Ward (2011)
1	Asda Pharmacy	ME102PD	Milton Regis
2	Austinoma Chemist	ME102TZ	Kemsley
3	Boots	ME121NT	Sheerness West
4	Boots	ME104PL	St Michaels
5	Delmergate Limited	ME121QU	Sheerness West
6	Halfway Pharmacy	ME123JD	Queenborough & Halfway
7	Iwade Pharmacy	ME98SH	Iwade & Lower Halstow
8	Kamsons Pharmacy	ME105AB	Grove
9	Kemsley Pharmacy	ME102ST	Kemsley
10	Lloyds Pharmacy	ME101NQ	Chalkwell
11	Lloyds Pharmacy	ME102AN	Milton Regis
12	Memorial Pharmacy	ME104XX	St Michaels
13	Minster Pharmacy	ME122RW	Minster Cliffs
14	Mistrys Chemists	ME121UA	Sheerness West
15	Newington Pharmacy	ME97JL	Hartlip, Newington & Upchurch
16	Paydens Ltd	ME121UP	Sheerness East
17	Sheppey Hospital Pharmacy	ME123LT	Sheppey Central
18	Superdrug Pharmacy	ME121TX	Sheerness West
19	Superdrug Pharmacy	ME104AJ	St Michaels
20	Tesco Pharmacy	ME121RH	Sheerness East
21	Well Queenborough	ME115AY	Queenborough & Halfway
22	Well Sittingbourne	ME104BL	St Michaels

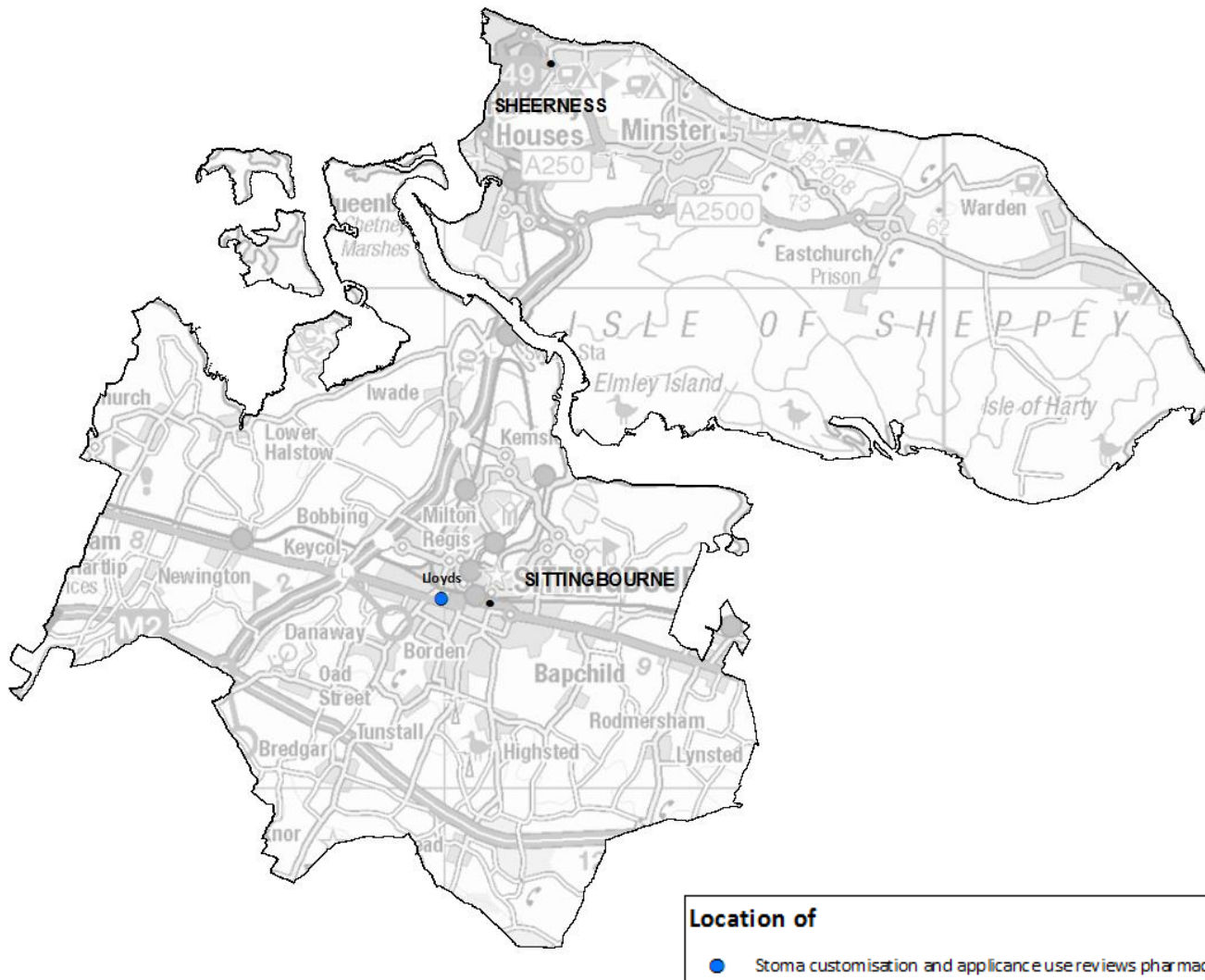
Pharmacies proving new medicines service



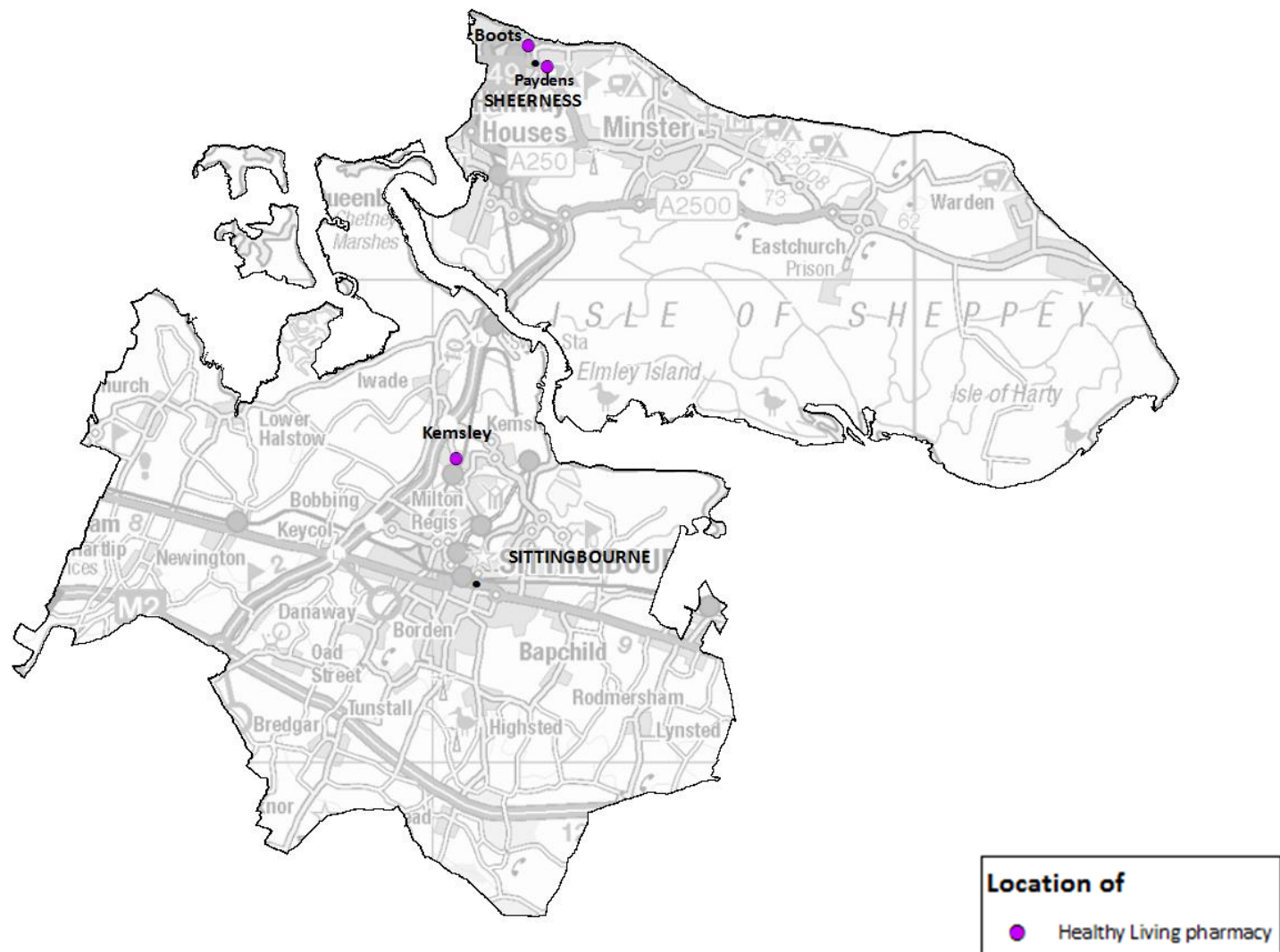
Pharmacies providing new medicines service

New medicine review				
ID	Pharm code	Trading name	Postcode	Ward (2011)
1	FQ129	Asda Pharmacy	ME102PD	Milton Regis
2	FJP35	Austinoma Chemist	ME102TZ	Kemsley
3	FF255	Boots	ME121NT	Sheerness West
4	FMJ37	Boots	ME104PL	St Michaels
5	FF318	Delmergate Limited	ME121QU	Sheerness West
6	FPR88	Halfway Pharmacy	ME123JD	Queenborough & Halfway
7	FM706	Kamsons Pharmacy	ME105AB	Grove
8	FM457	Kemsley Pharmacy	ME102ST	Kemsley
9	FFP47	Lloyds Pharmacy	ME101NQ	Chalkwell
10	FRM42	Lloyds Pharmacy	ME102AN	Milton Regis
11	FLD05	Memorial Pharmacy	ME104XX	St Michaels
12	FJC80	Minster Pharmacy	ME122RW	Minster Cliffs
13	FPK82	Newington Pharmacy	ME97JL	Hartlip, Newington & Upchurch
14	FNE00	Paydens Ltd	ME121UP	Sheerness East
15	FWE33	Sheppey Hospital Pharmacy	ME123LT	Sheppey Central
16	FVQ76	Superdrug Pharmacy	ME121TX	Sheerness West
17	FGR31	Superdrug Pharmacy	ME104AJ	St Michaels
18	FDC87	Tesco Pharmacy	ME121RH	Sheerness East
19	FAP99	Well Queenborough	ME115AY	Queenborough & Halfway

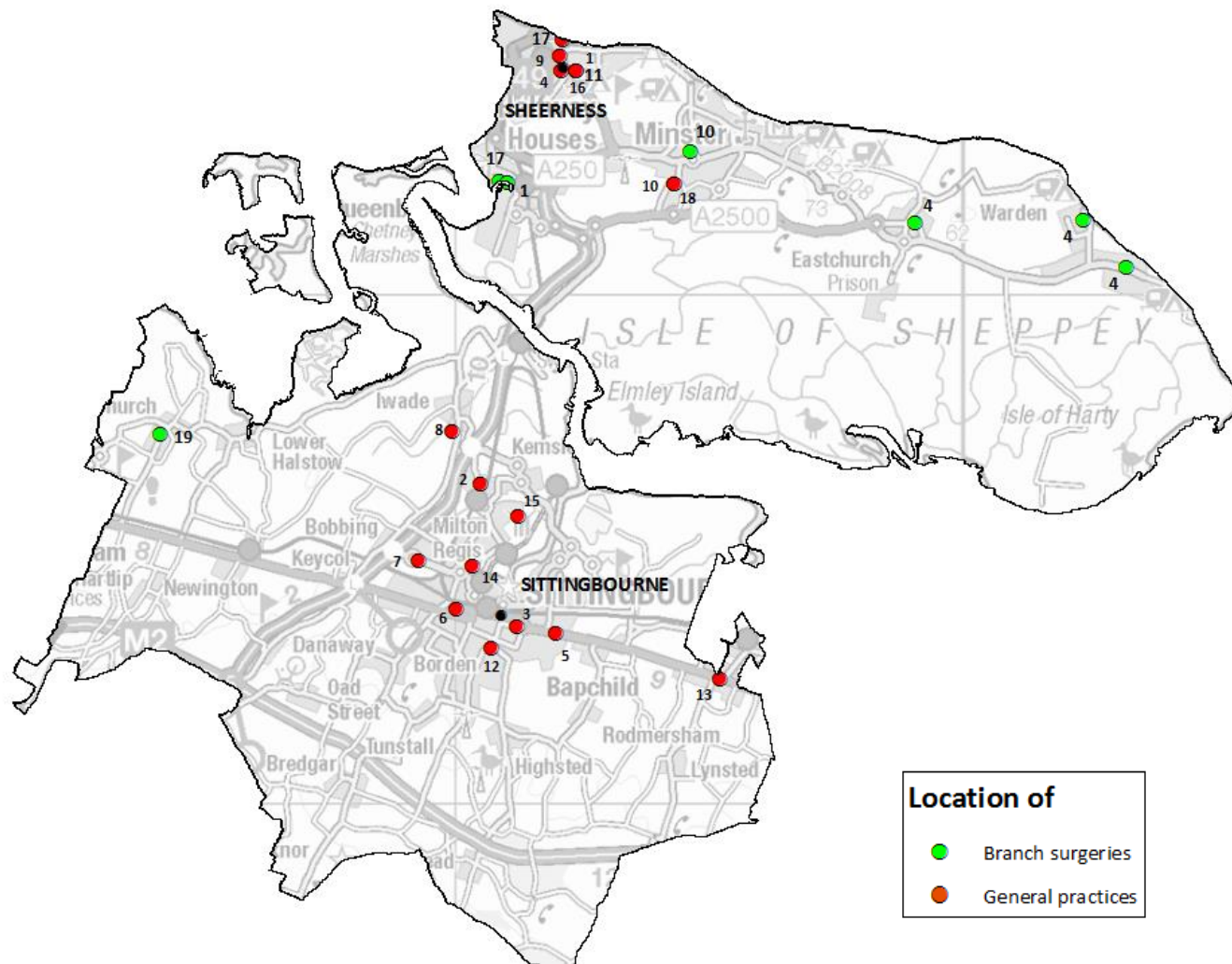
Pharmacies and appliance contractors providing stoma customisation and appliance use reviews



Healthy Living pharmacies



General practices

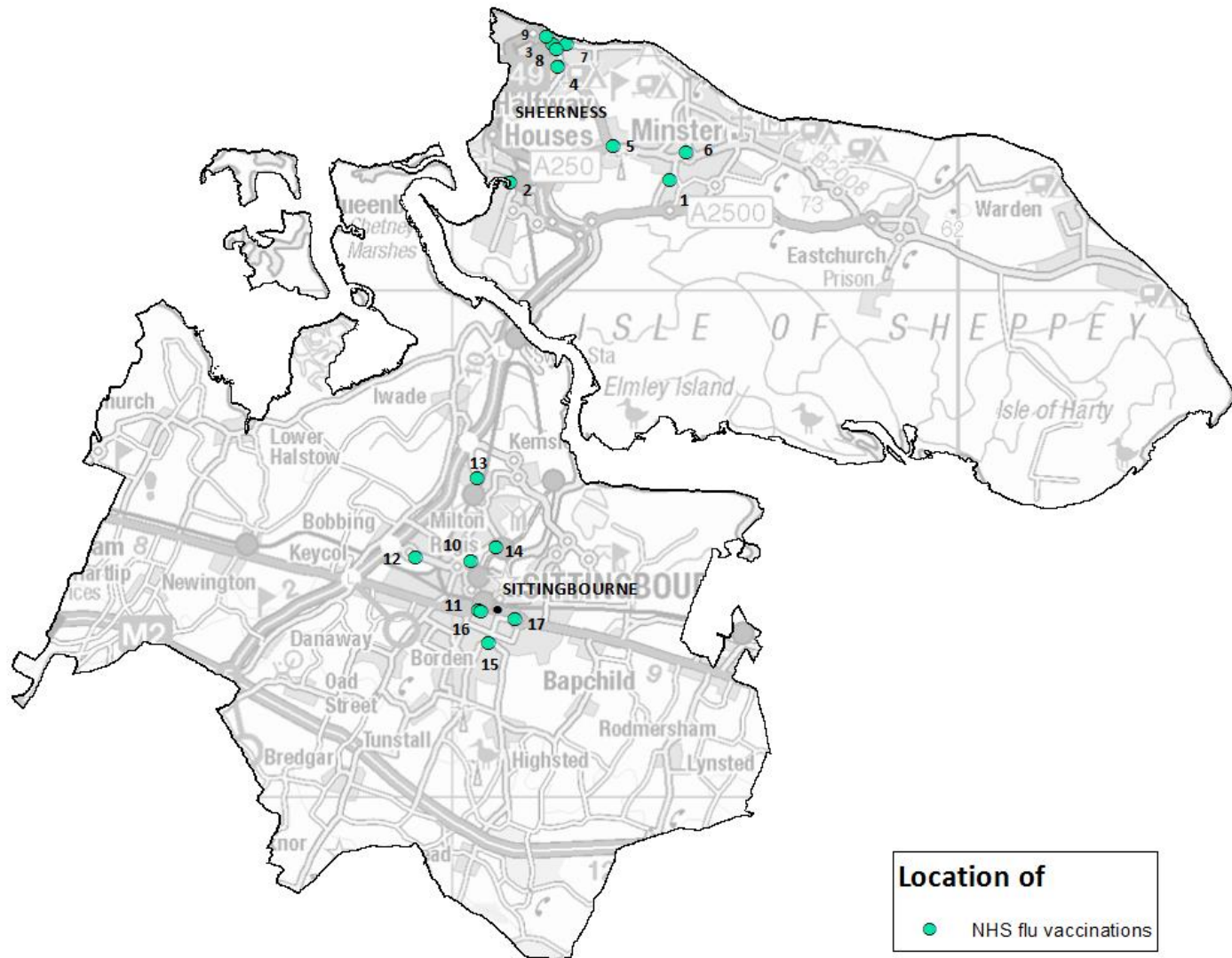


General practices

General practices - Main				
Key	Practice Code	Practice Name	Postcode	Ward (2011)
1	G82023	Sheerness Health Centre	ME121UP	Sheerness East
2	G82026	Grovehurst Surgery	ME102ST	Kemsley
3	G82035	The Chestnuts Surgery	ME104RU	St Michaels
4	G82057	St George's Medical Centre	ME121QU	Sheerness West
5	G82175	Canterbury Rd Sittingbourne	ME104JA	Murston
6	G82231	The Medical Centre	ME101ND	Chalkwell
7	G82634	The Meads Medical Practice	ME105AA	Grove
8	G82671	Iwade Health Centre	ME98TY	Iwade & Lower Halstow
9	G82682	The 'om' Medical Centre	ME121UA	Sheerness West
10	G82686	Minster Medical Centre	ME123LT	Sheppey Central
11	G82687	Sheerness Health Centre	ME121UP	Sheerness East
12	G82693	Memorial Medical Centre	ME104XX	St Michaels
13	G82698	The Surgery Teynham	ME99QL	Teynham & Lynsted
14	G82702	Milton Regis Surgery	ME102AR	Milton Regis
15	G82757	Lakeside Medical Centre	ME102TZ	Kemsley
16	G82791	High Street Surg Sheerness	ME121UP	Sheerness East
17	G82799	Sheppey Healthy Living Centre	ME121HH	Sheerness East
18	Y02506	Dmc Healthcare Centre	ME123LT	Sheppey Central
19	G82180	Maidstone Road Surgery (part of Medway CCG)	ME97AU	Hartlip, Newington & Upchurch

General practices - Branch				
Key	Practice Code	Practice Name	Postcode	Ward (2011)
1	G82023	The Surgery	ME115AQ	Queenborough & Halfway
4	G82057	St George's Medical Centre	ME124BN	Sheppey Central
4	G82057	St George's Medical Centre	ME124PS	Leysdown & Warden
4	G82057	St George's Medical Centre	ME124RE	Leysdown & Warden
10	G82682	The 'Om' Medical Centre	ME122RL	Minster Cliffs
17	G82791	Sheerness Health Centre - Queenborough Surgery	ME115AG	Queenborough & Halfway

NHS flu vaccination



NHS flu vaccination

NHS flu vaccinations			
Key	Pharmacy Name	Postcode	Ward (2011)
1	Sheppey Hospital Pharmacy	ME123LT	Sheppey Central
2	Well	ME115AY	Queenborough & Halfway
3	Boots	ME121NT	Sheerness West
4	Delmergate Ltd	ME121QU	Sheerness West
5	Halfway Pharmacy	ME123JD	Queenborough & Halfway
6	Minster Pharmacy	ME122RW	Minster Cliffs
7	Paydens	ME121TP	Sheerness East
8	Superdrug	ME121TX	Sheerness West
9	Tesco	ME121RH	Sheerness East
10	Asda	ME102PD	Milton Regis
11	Boots	ME104PL	St Michaels
12	Kamsons	ME105AB	Grove
13	Kemsley	ME102ST	Kemsley
14	Lloyds Pharmacy	ME102AN	Milton Regis
15	Memorial Pharmacy	ME104XX	St Michaels
16	Superdrug	ME104AJ	St Michaels
17	Well	ME104BL	St Michaels



Orientation maps

- Source: Base layer available on ArcGIS



Population maps and information

- Sources Office for National Statistics (ONS), 2014 based forecasts used for population projections. All other populations are based on 2016 mid-year estimates (MYE)



Ethnicity profiles

- Source: Census 2011 via National Online Manpower Information System (NOMIS)



Index of multiple deprivation

- Source: Department for Communities & Local Government, shows a relative deprivation score



Pharmaceutical services

- Source: NHS England, data collected for 2016/17 (April 16 to February 17), Healthy Living Pharmacies data collected from KCC (2017)



General practices

- Source: Primary Care Information System (PCIS), correct as of November 2016