

Pharmaceutical Needs Assessment – Kent (DRAFT)

Supplementary data and maps
data correct as of August 2017

Produced by

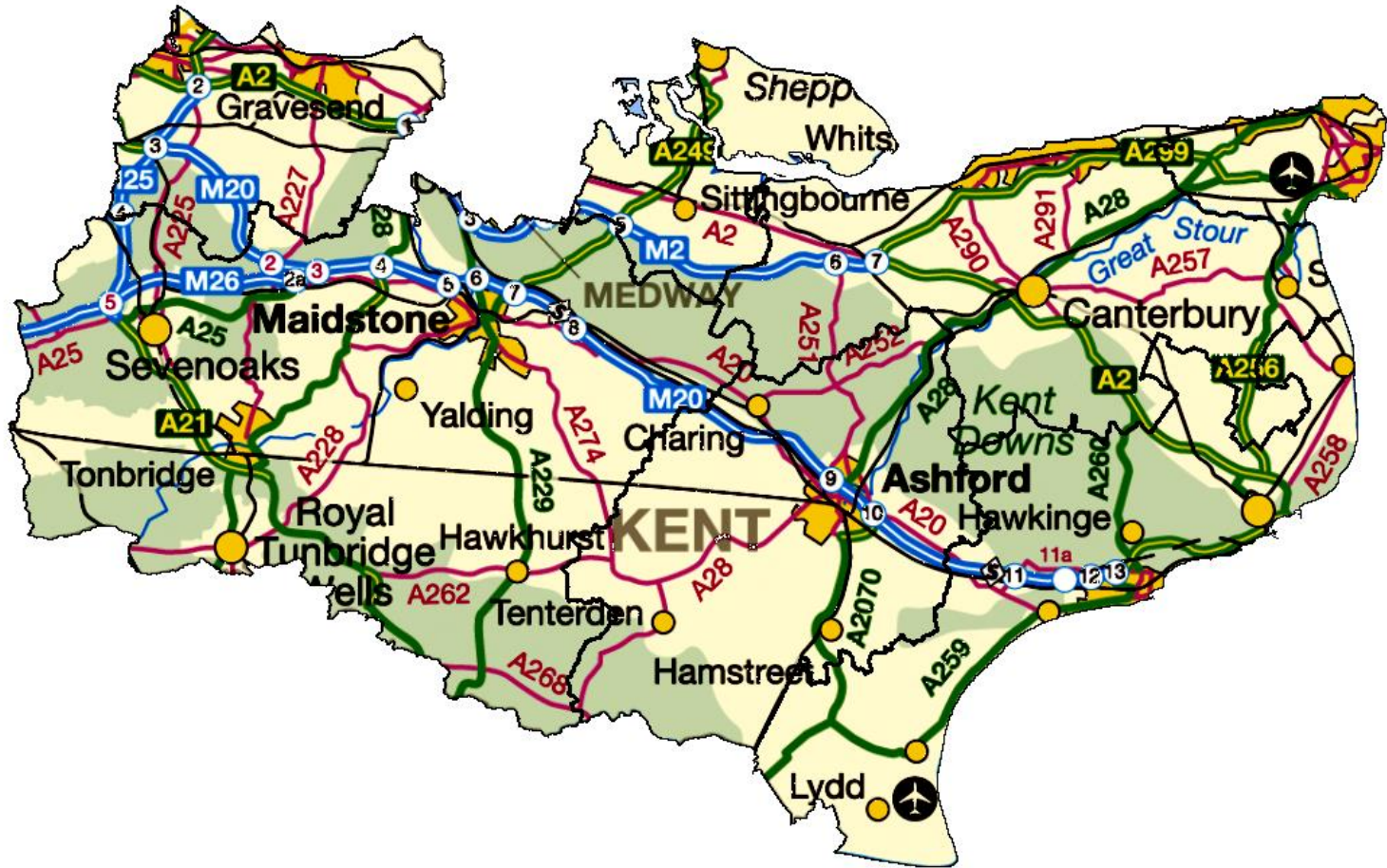
Cheryl Clennett, Consultant Pharmacist
Julian Barlow, Senior Public Health Intelligence Analyst
Matthew Pateman, Public Health Analyst
Lauren Liddell-Young, Public Health Information Officer

Version: 1
Last updated: August 2017

Contents

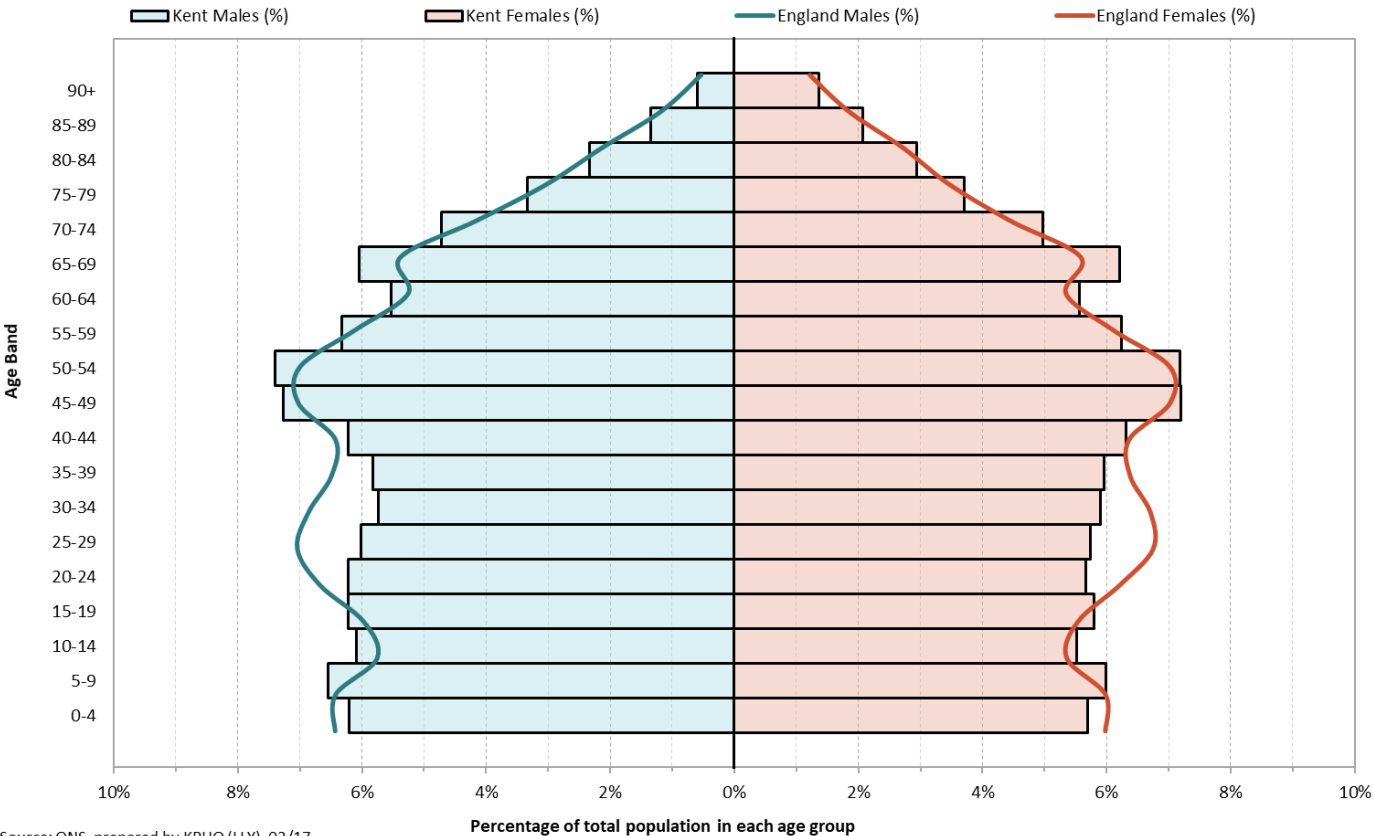
- [Orientation](#)
- [Current population](#)
- [Population density](#)
- [Population growth](#)
- [Ethnicity profile](#)
- [Index of multiple deprivation](#)
- [Location of pharmaceutical services](#)
- [Distance rings around community pharmacies](#)
- [Pharmacies providing medicines use review](#)
- [Pharmacies providing new medicines service](#)
- [Pharmacies and appliance contractors providing stoma customisation and appliance use reviews](#)
- [Healthy Living pharmacies](#)
- [General practices](#)
- [NHS flu vaccination](#)

Orientation – Kent



Current population

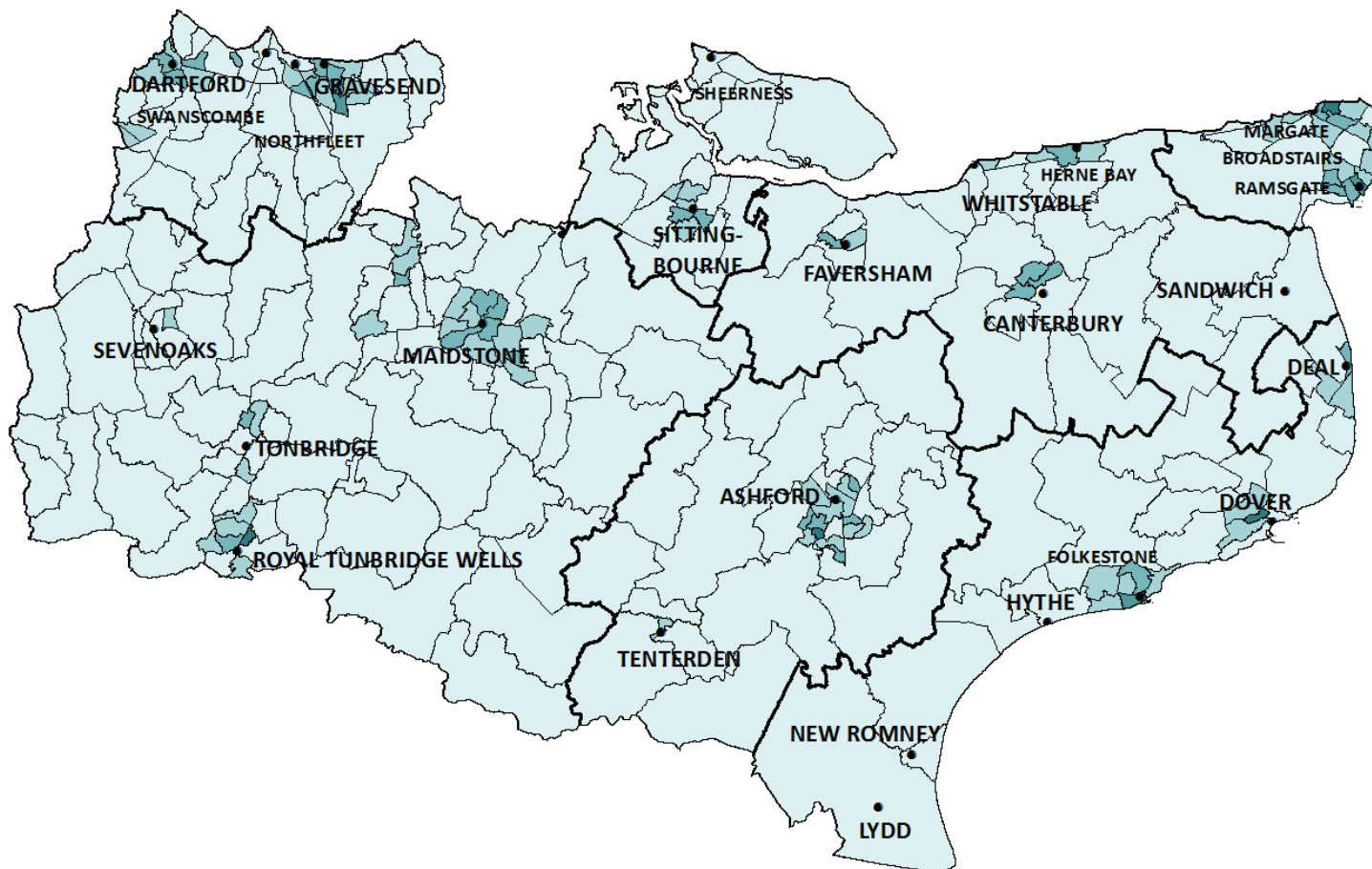
2016 resident population in Kent compared to England



Mid-year estimates for 2016: Kent			
Age band	Female	Male	Persons
0-4	44,749	47,018	91,767
05-09	47,061	49,577	96,638
10-14	43,339	46,046	89,385
15-19	45,482	47,044	92,526
20-24	44,470	47,024	91,494
25-29	45,115	45,556	90,671
30-34	46,336	43,409	89,745
35-39	46,801	44,051	90,852
40-44	49,626	47,128	96,754
45-49	56,559	54,944	111,503
50-54	56,358	55,980	112,338
55-59	48,958	47,833	96,791
60-64	43,652	41,853	85,505
65-69	48,743	45,789	94,532
70-74	39,045	35,702	74,747
75-79	29,061	25,188	54,249
80-84	23,067	17,701	40,768
85-89	16,221	10,238	26,459
90	10,682	4,487	15,169
All ages	785,325	756,568	1,541,893

Source: ONS, prepared by KPHO (LLY), 02/17

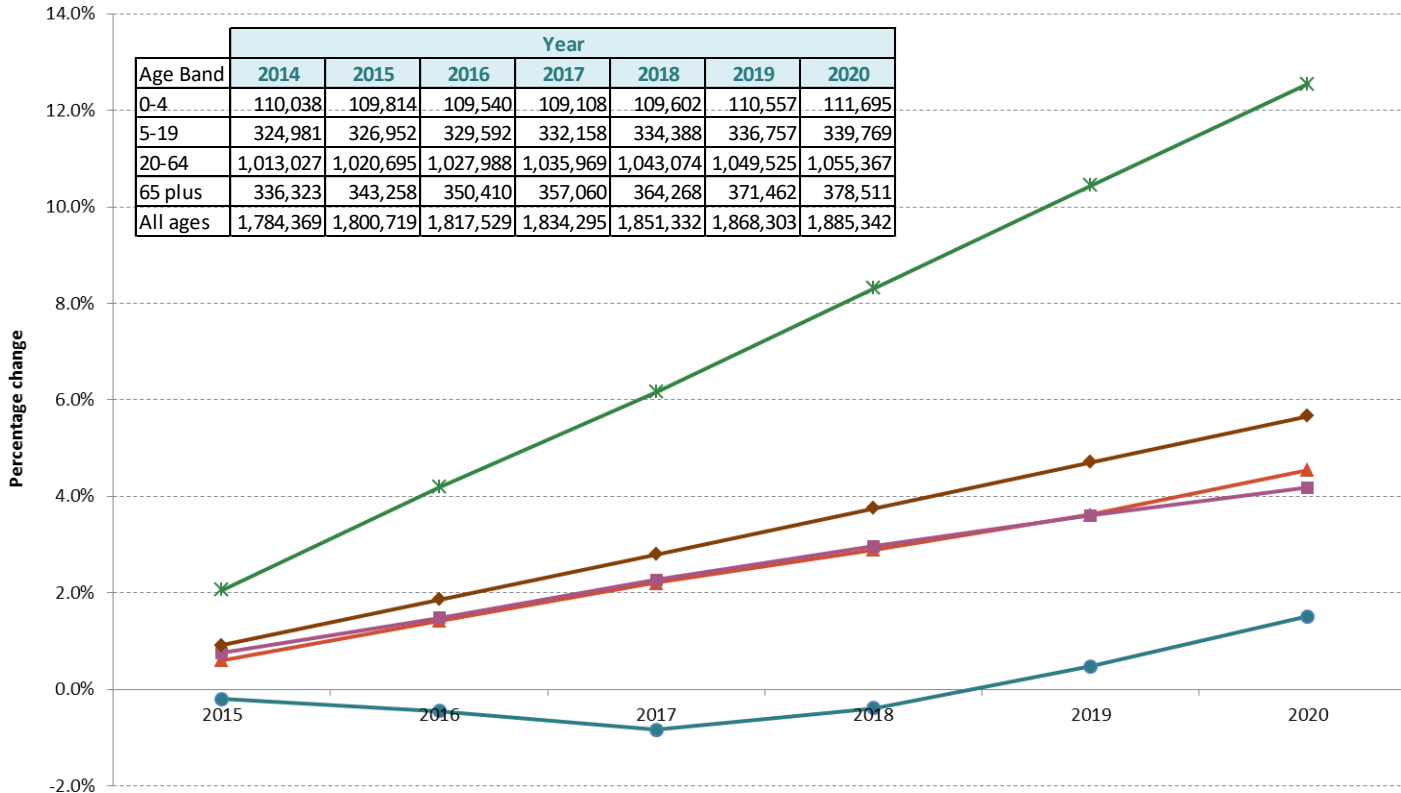
Population density (2015, by ward)



Population growth

Population Growth: Kent for 2015 to 2020 from 2014

● 0-4 ▲ 5-19 ■ 20-64 * 65 plus ◆ All ages



The chart shows the percentage growth of Kent's projected population from 2015 to 2020.

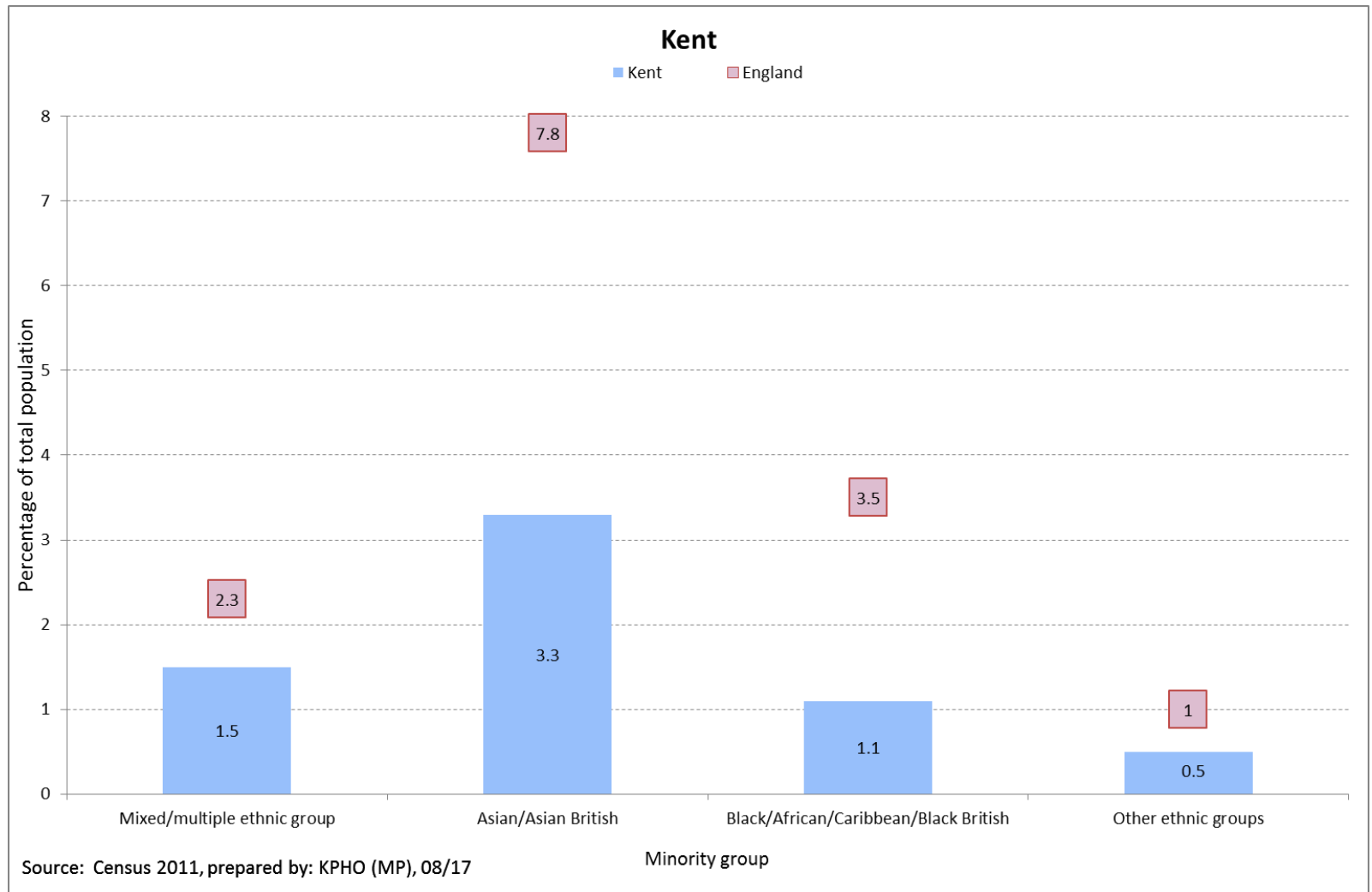
This uses a baseline of 2014 population to calculate the percentage growth and is split into different age-bandings.

The table provides the total number of the different age-bandings for the baseline population (2014) and the projected population from 2015 to 2020.

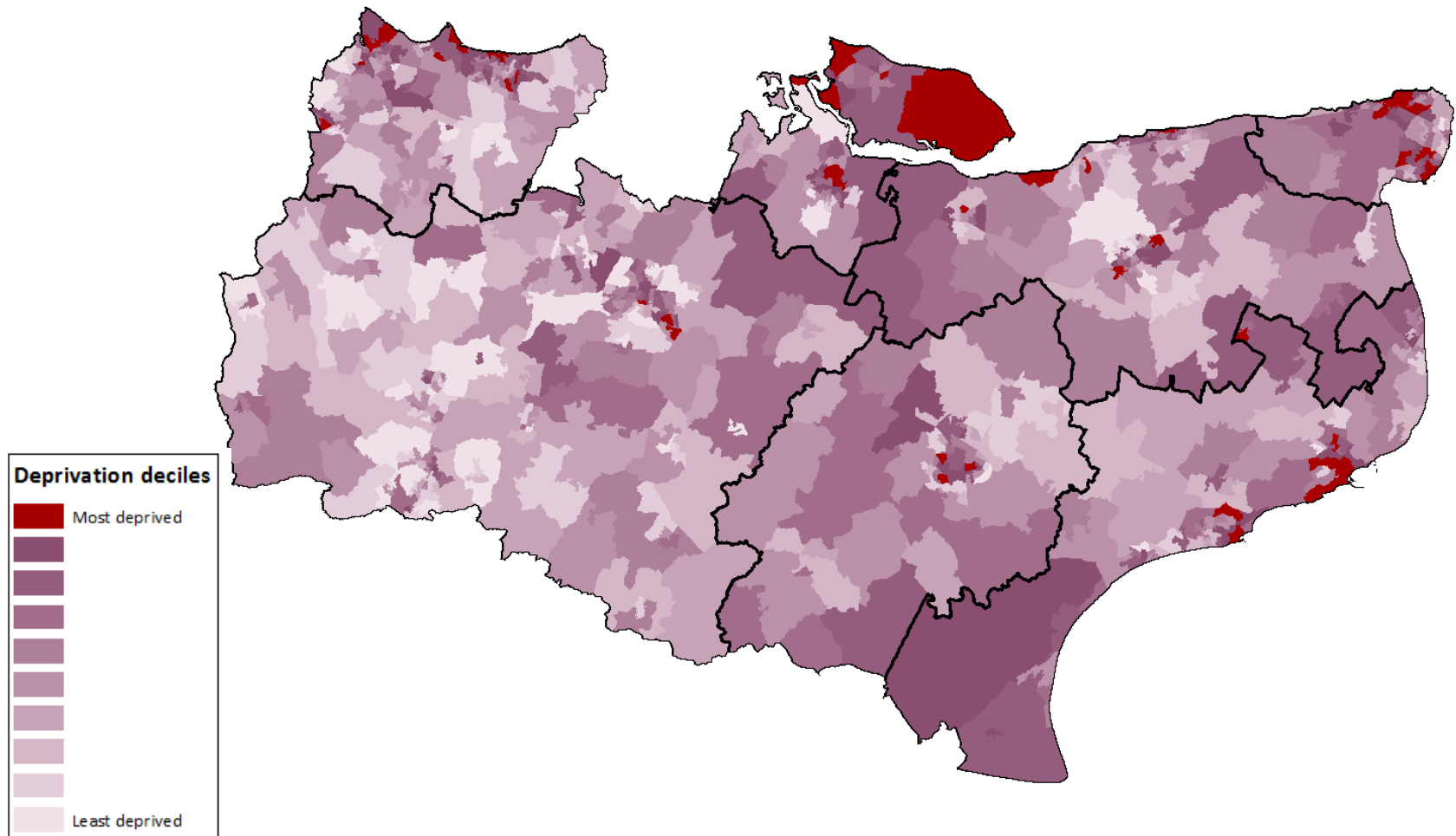
While population is increasing for all age bands the greatest growth is seen in the 65 years and over age band.

Source: ONS 2014 based population projections, prepared by KPHO (LLY), 07/17

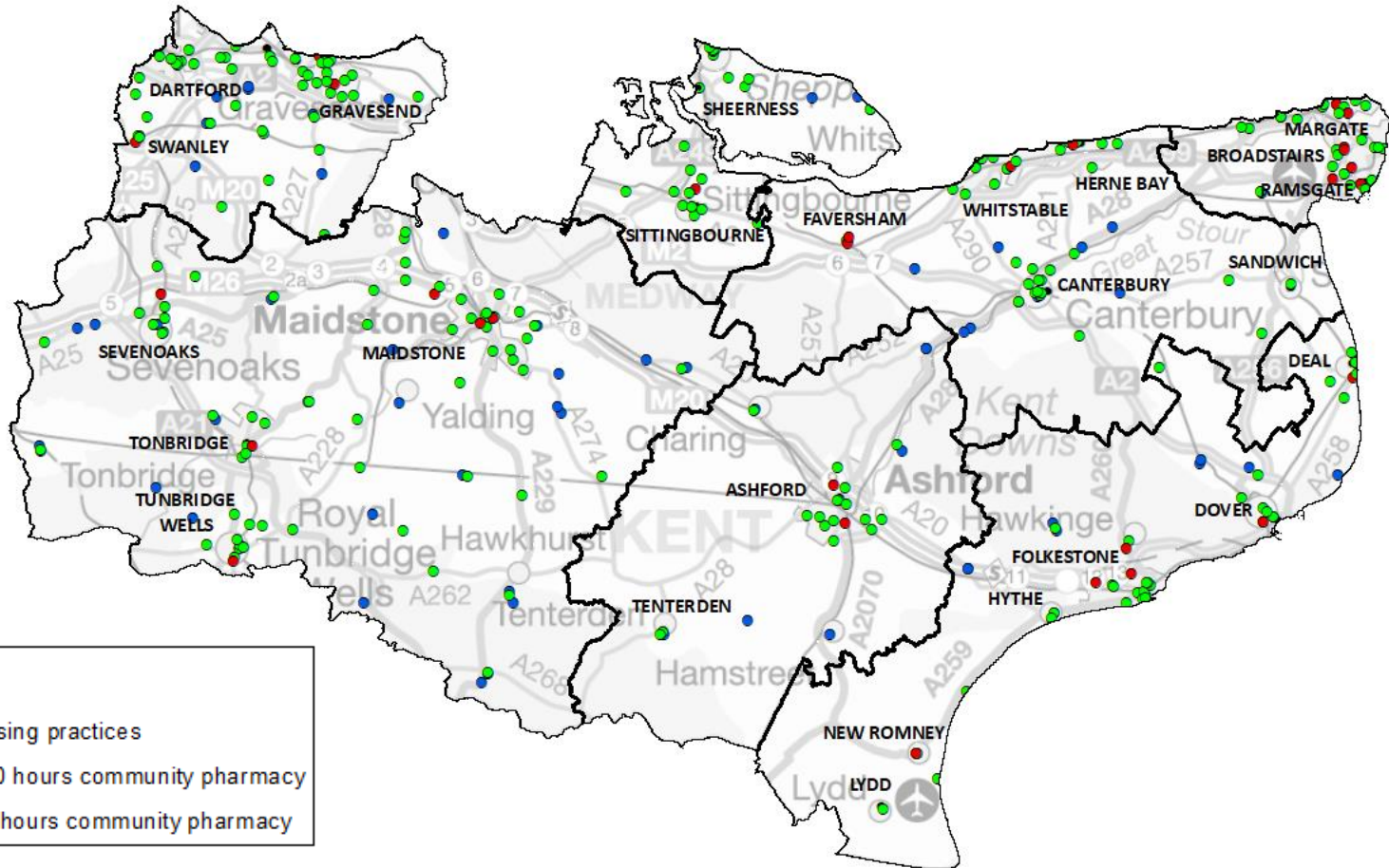
Ethnicity profile



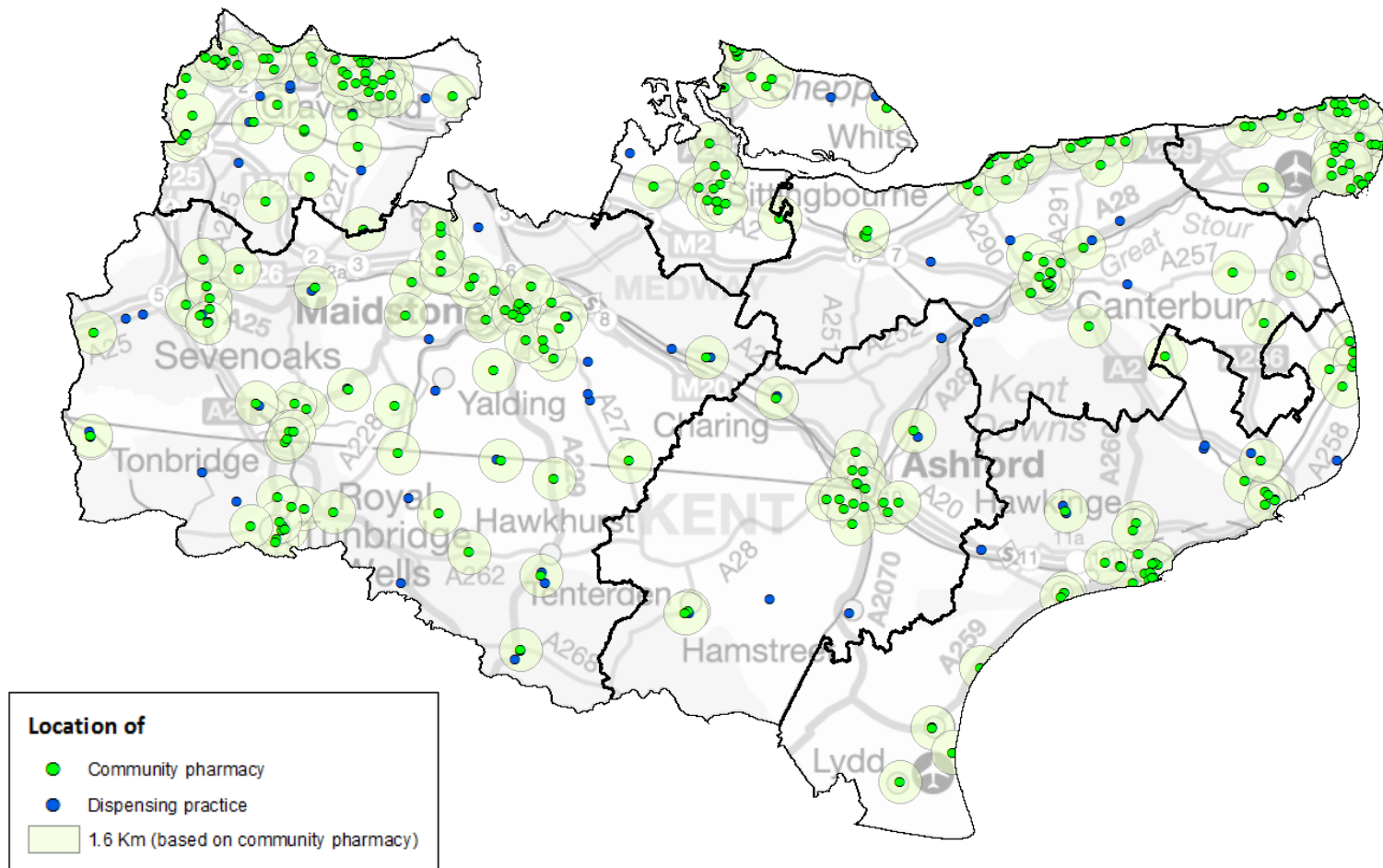
Index of multiple deprivation (2015, CCG quintiles)



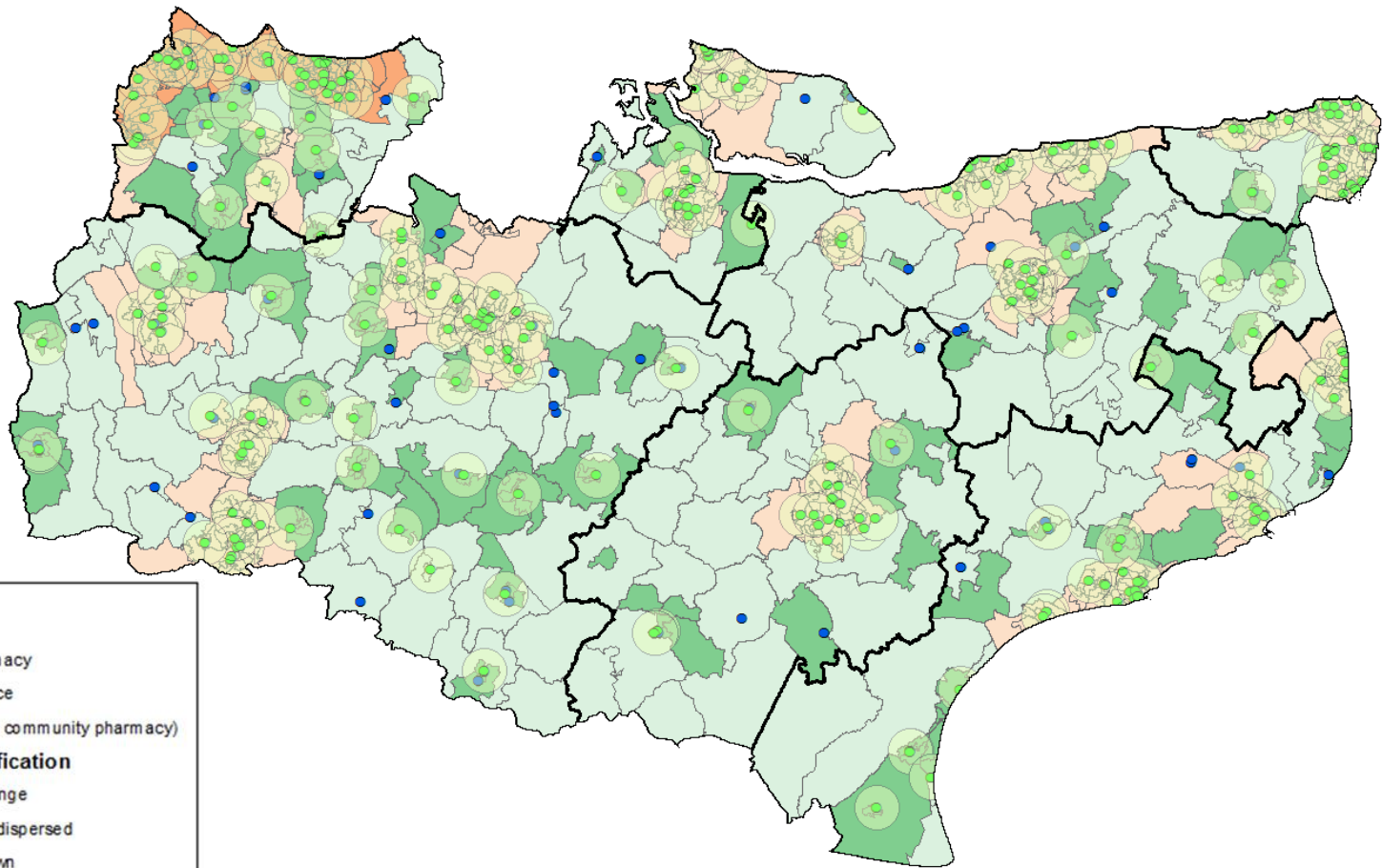
Providers of pharmaceutical services



Distance rings (1.6km) around community pharmacies



Distance rings (1.6km) around community pharmacies with rural urban classification (2011)



Location of

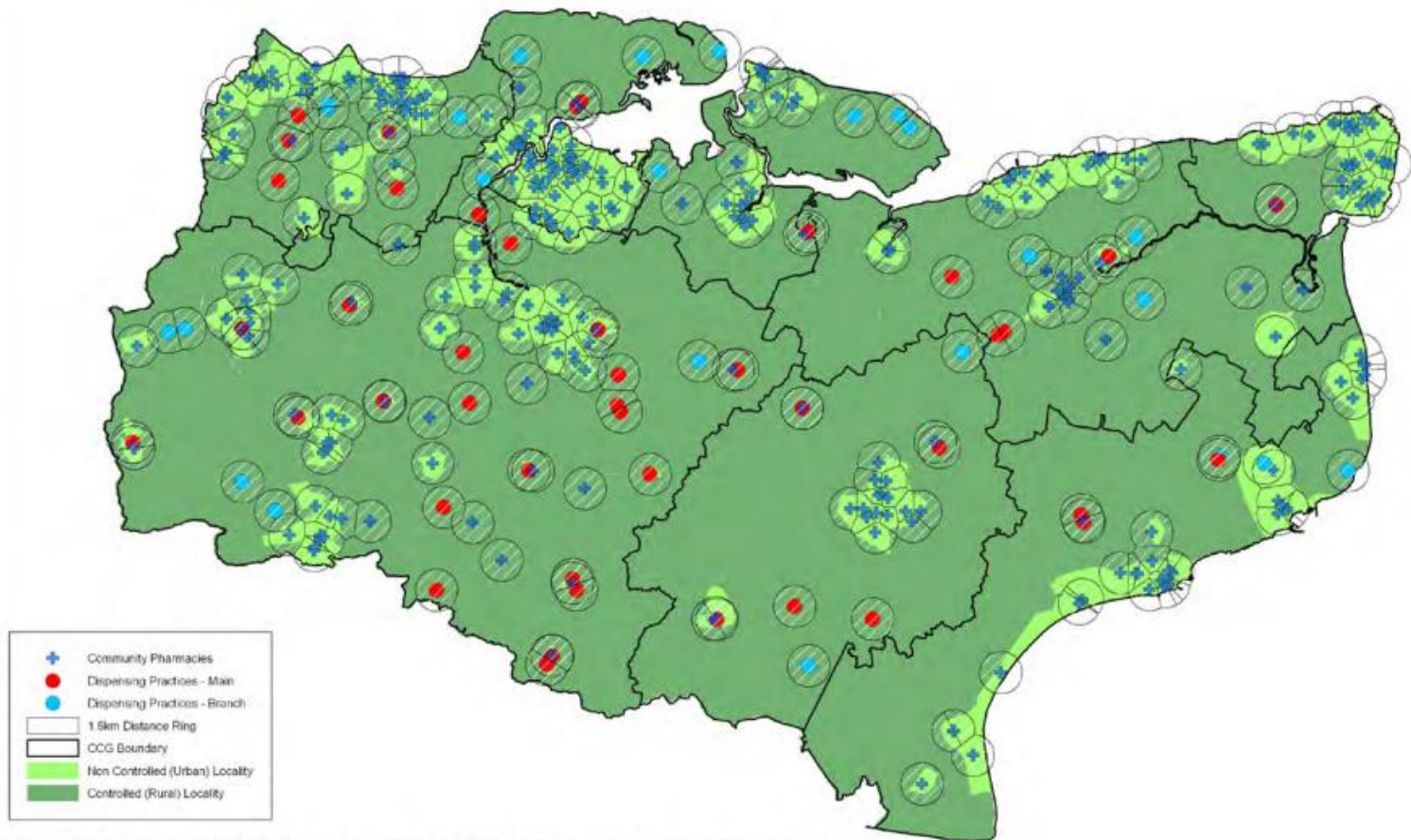
- Community pharmacy
- Dispensing practice
- 1.6 Km (based on community pharmacy)

Rural / urban classification

- Rural town and fringe
- Rural village and dispersed
- Urban city and town
- Urban major conurbation

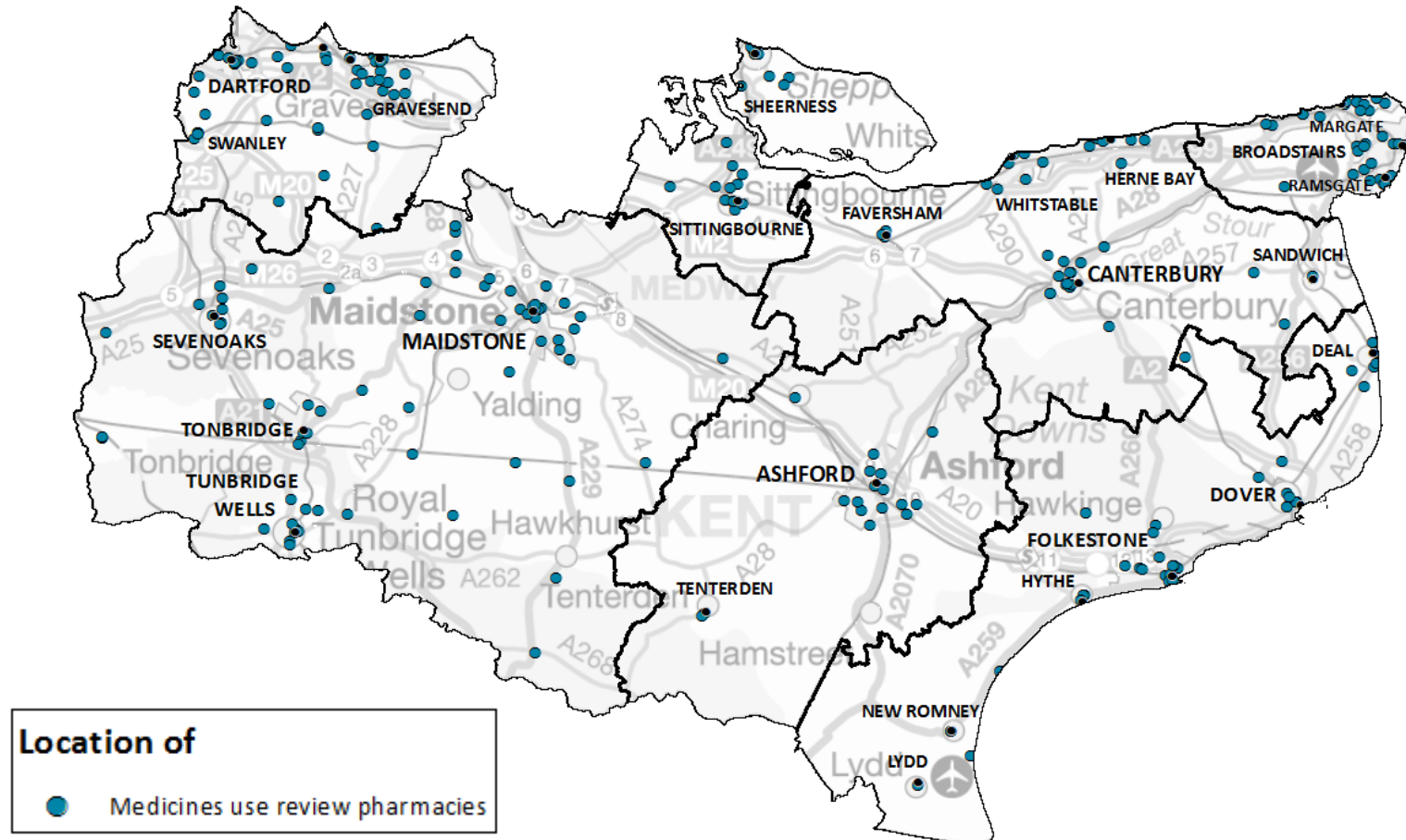
Controlled localities and distance rings

Controlled Localities and Distance Rings 1.6km Around Community Pharmacies and Dispensing Practices, Kent County

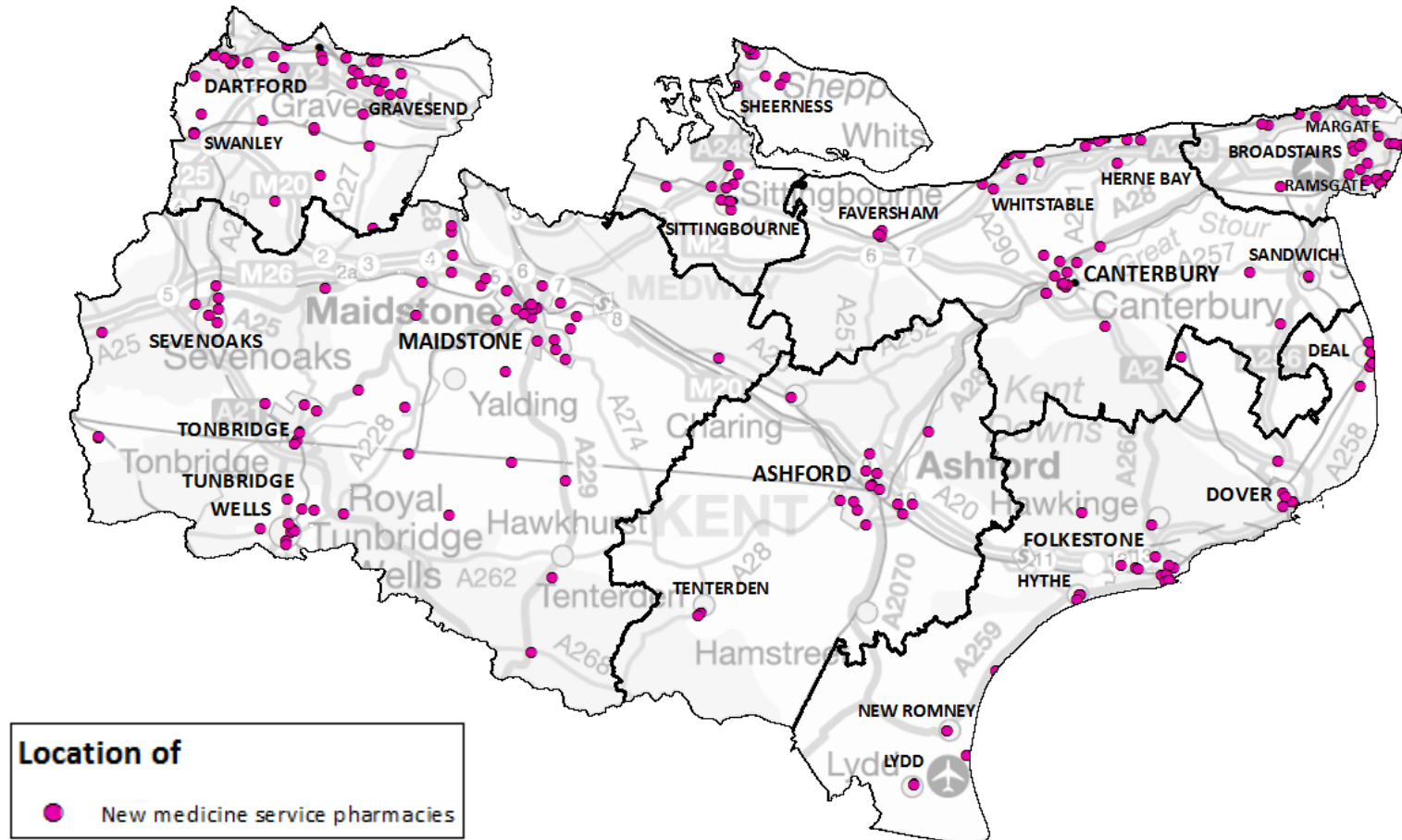


Copyright (C) Experian Ltd 2009; Copyright NAVTEQ 2009. Based on Crown Copyright material.

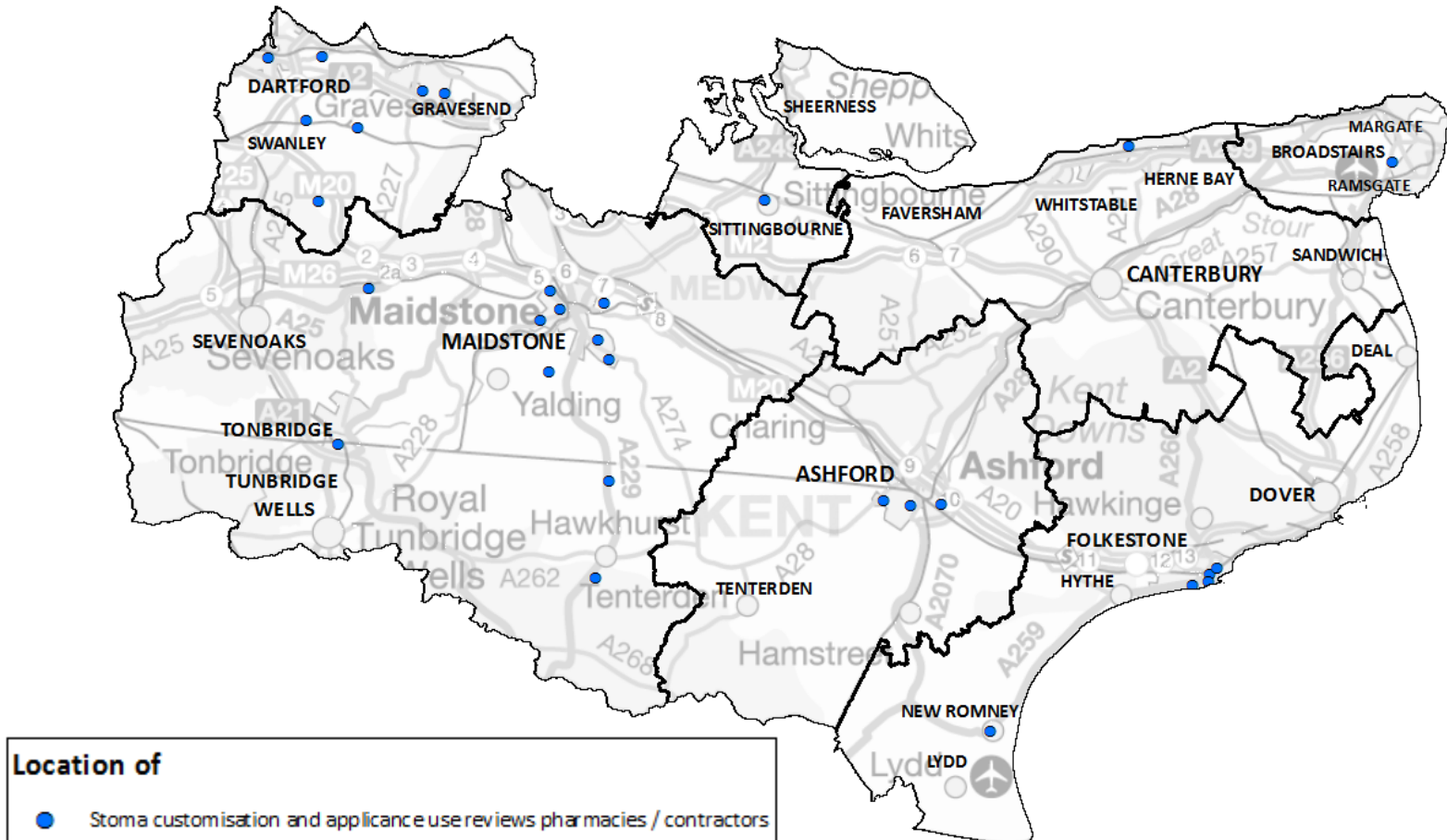
Pharmacies proving medicine use reviews



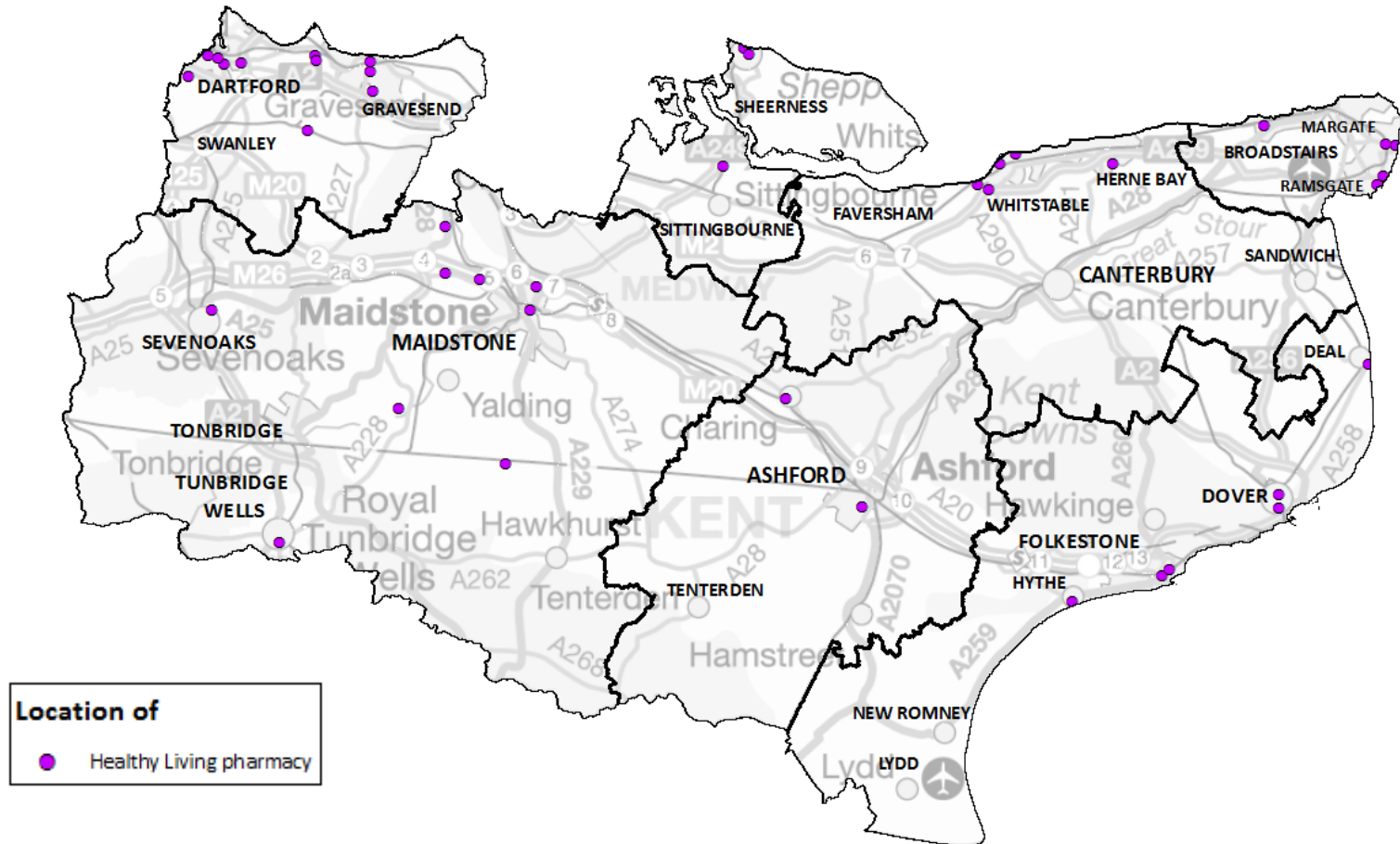
Pharmacies providing new medicine service



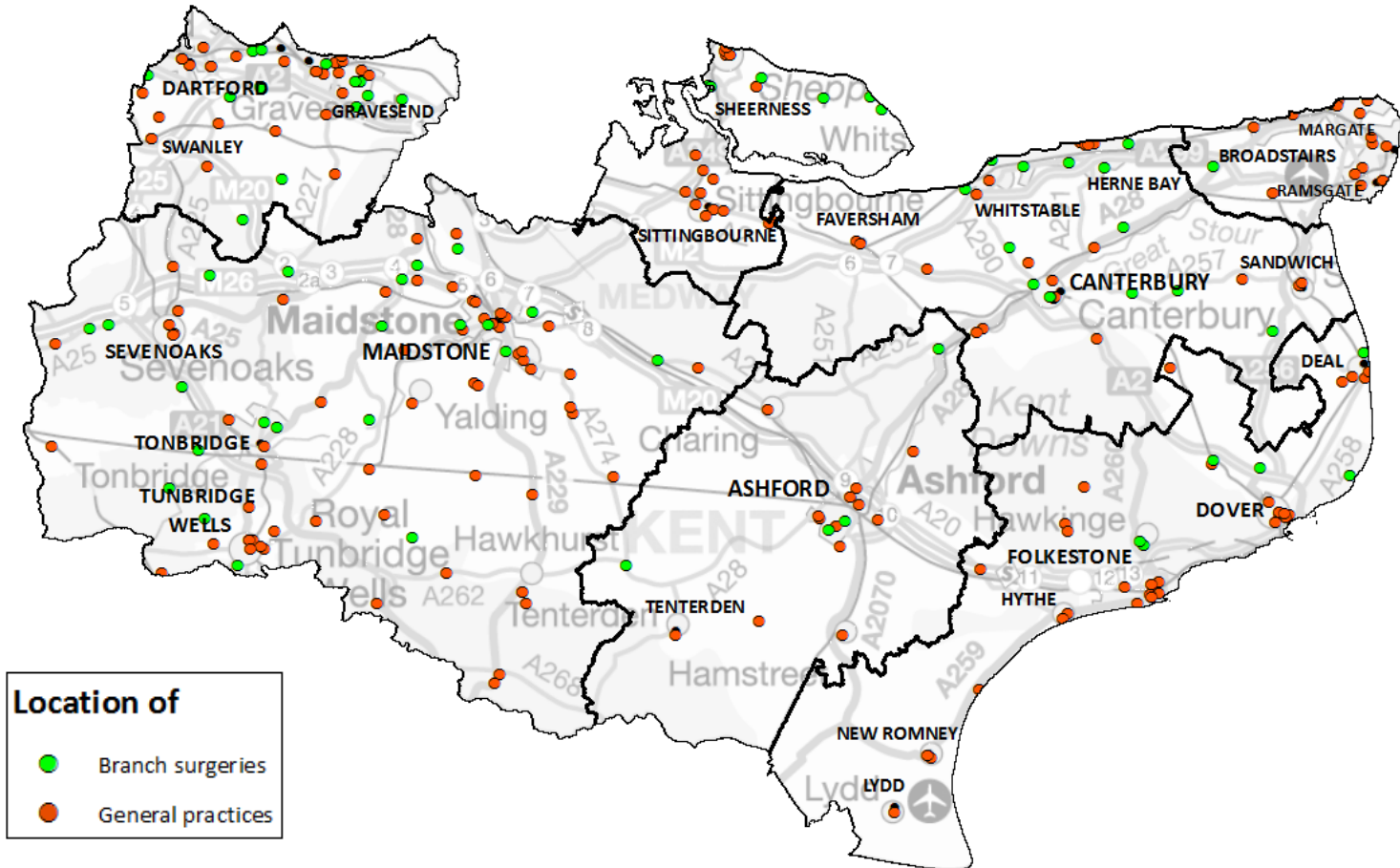
Pharmacies and appliance contractors providing stoma customisation and appliance use reviews



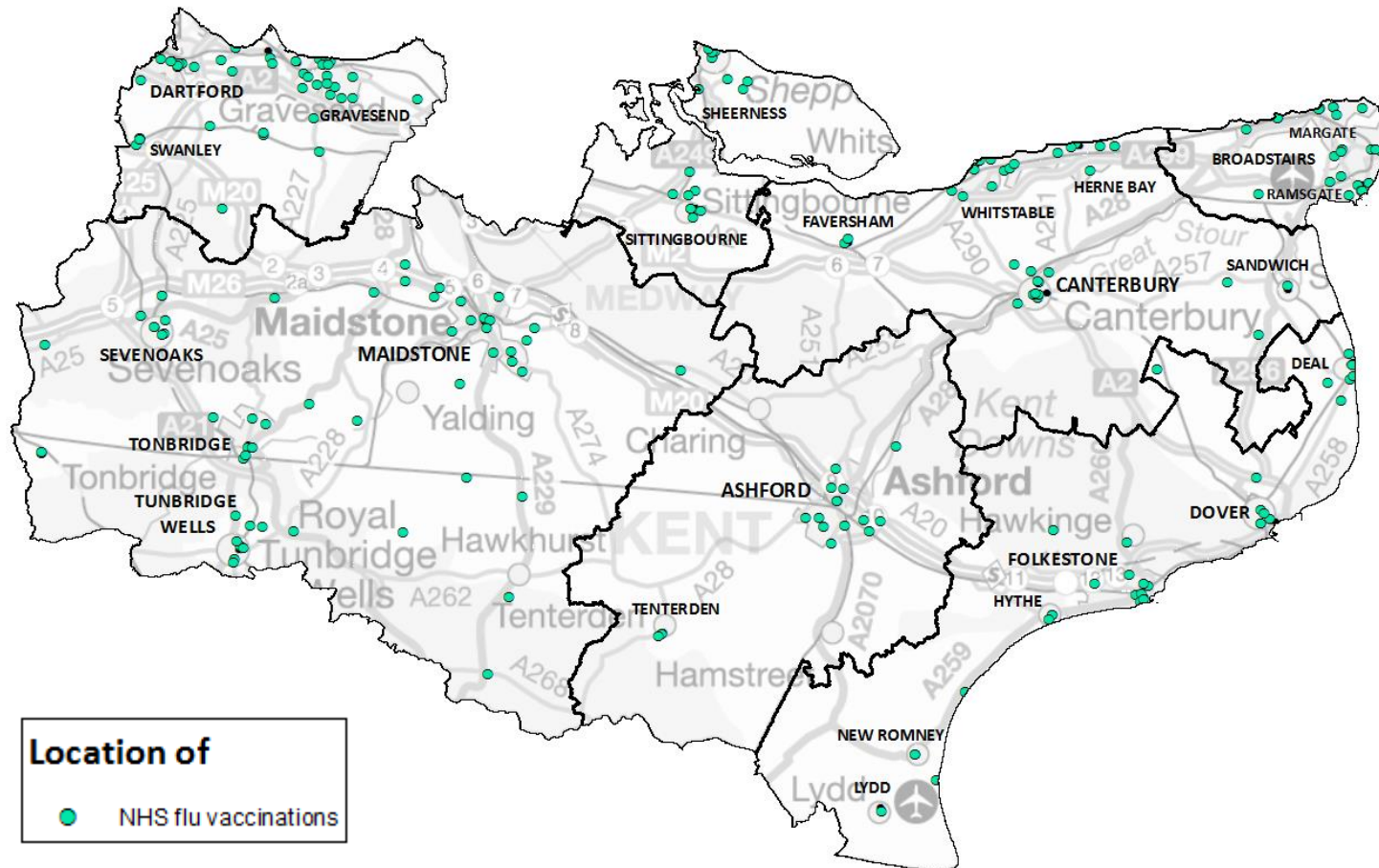
Healthy Living pharmacies



General practices



NHS flu vaccination





Orientation maps

- Source: Base layer available on ArcGIS



Population maps and information

- Sources Office for National Statistics (ONS), 2014 based forecasts used for population projections. All other populations are based on 2015 mid-year estimates (MYE)



Ethnicity profiles

- Source: Census 2011 via National Online Manpower Information System (NOMIS)



Index of multiple deprivation

- Source: Department for Communities & Local Government, shows a relative deprivation score



Pharmaceutical services

- Source: NHS England, data collected for 2016/17 (April 16 to February 17), Healthy Living Pharmacies data collected from KCC (2017)



General practices

- Source: Primary Care Information System (PCIS), correct as of November 2016