

DARTFORD, GRAVESHAM & SWANLEY CCG

Analysis of Deprived Areas

In the tenth decile for Kent

January 2016



KCC Public Health is taking a new approach to reducing health inequalities in the county, by producing focussed analysis on tenth decile populations. Multivariate segmentation techniques have been used to identify different 'types' of deprivation in Kent. This report shows our analysis of the most deprived areas in Dartford, Gravesham and Swanley (DGS) CCG. For more information on the rationale of this approach and our methods, please see the full report:

Produced by

Dr Wikum Jayatunga: Public Health Registrar (wikum.jayatunga@kent.gov.uk)

Rachel Kennard: Senior Intelligence Analyst (rachel.kennard@kent.gov.uk)

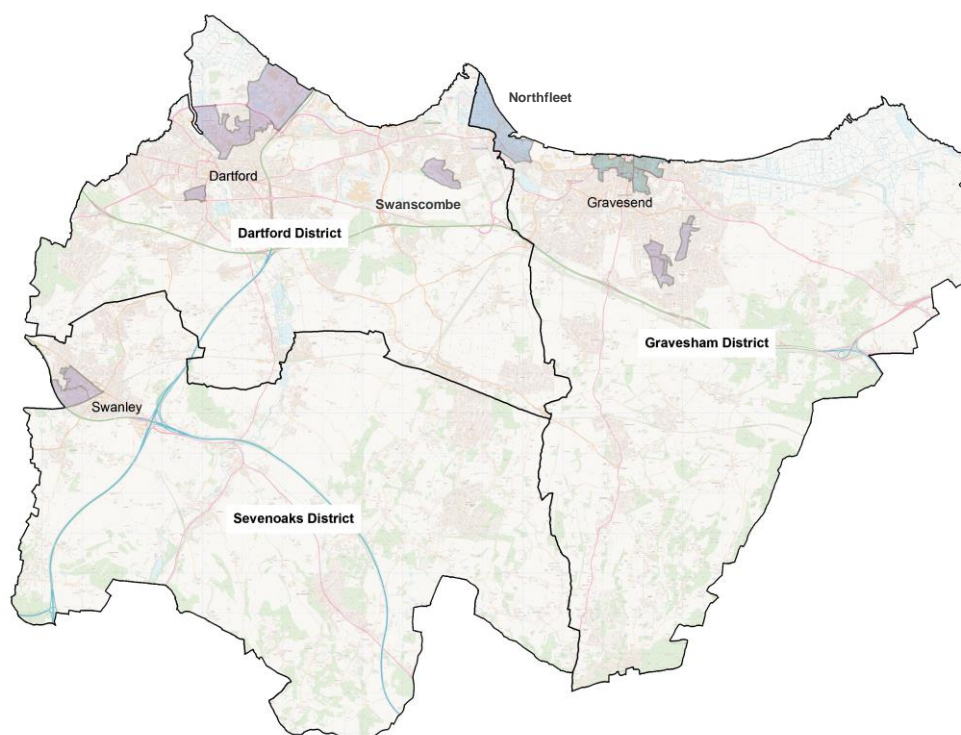
Natasha Hobbs: Public Health Information Officer (natasha.hobbs@kent.gov.uk)

Correspondence to: Rachel Kennard

Background

Dartford, Gravesham and Swanley CCG covers an area in the North of Kent, across the districts of Dartford, Gravesham and the north part of Sevenoaks. Given the location, many of the residents here are commuters in to London. There is also greater ethnic diversity here than the rest of Kent. Deprivation is prevalent in the more urban areas to the north, around the towns of Dartford, Swanscombe, Gravesend, Northfleet and Swanley. 13 LSOAs feature in the most deprived decile in Kent:

Ward code	Ward name	LSOA Code	LSOA name	LSOA rank	GP practice codes serving LSOA		Type
E05005031	Swanley St Mary's	E01024476	Sevenoaks 002A	64	G82225	G82028	3
		E01024477	Sevenoaks 002B	73	G82225	G82028	3
E05004931	Joyce Green	E01024148	Dartford 001A	29	G82647		3
E05004933	Littlebrook	E01024155	Dartford 001D	50	G82647	G82006	3
E05004936	Princes	E01024165	Dartford 009A	75	G82048	G82143	3
E05004939	Swanscombe	E01024177	Dartford 004C	47	G82122		3
E05004971	Northfleet North	E01024278	Gravesham 001C	28	Y02826	G82044	1
E05004964	Central	E01024257	Gravesham 002A	51	G82780		4
E05004974	Pelham	E01032799	Gravesham 002F	78	G82780	G82032	4
E05004975	Riverside	E01024295	Gravesham 002E	31	G82780		4
E05004978	Singlewell	E01024306	Gravesham 011D	27	G82808		3
		E01024305	Gravesham 011C	38	G82808		3
E05004979	Westcourt	E01024308	Gravesham 007A	41	G82032		3



Young people lacking opportunities

MAIN ISSUES

**Please note that this analysis is based on a single LSOA, meaning wide confidence intervals for some measures.*

Characteristics

- Young adults with low income
- Particularly high levels of out-of-work benefit claimants
- High crime rates
- Poor scores for education
- High number of single parents
- High levels of movement/transiency

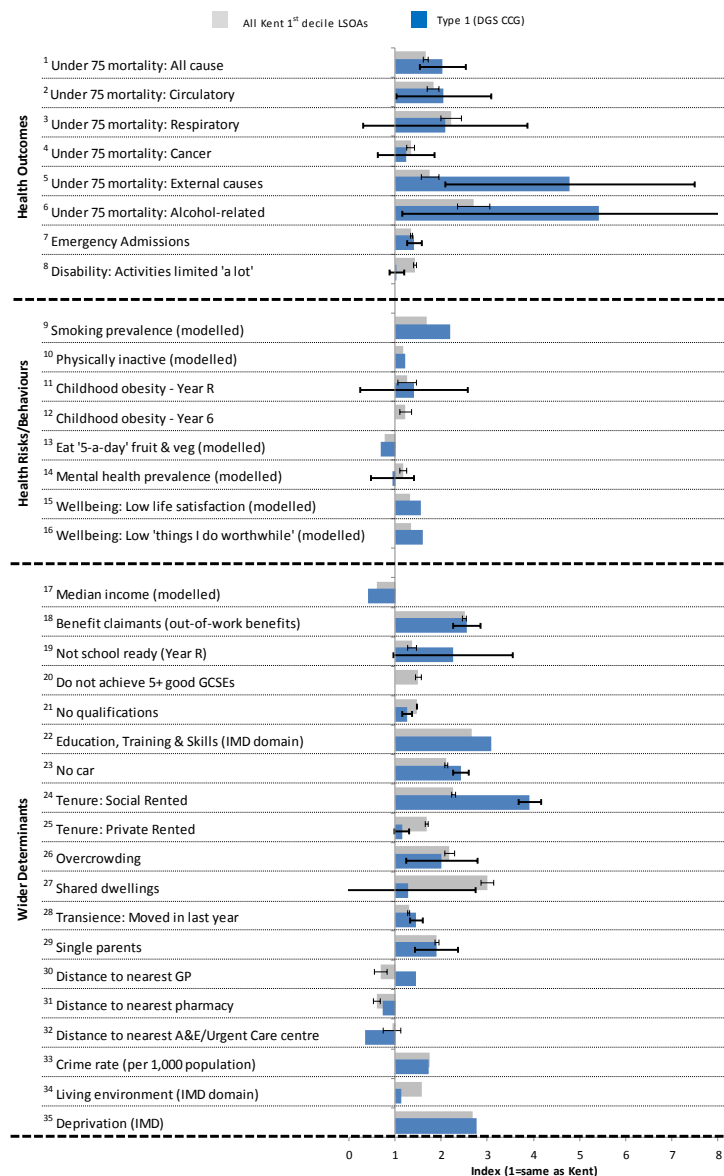
Health Risks/Behaviours

- High smoking prevalence
- Low levels of wellbeing

Health Outcomes

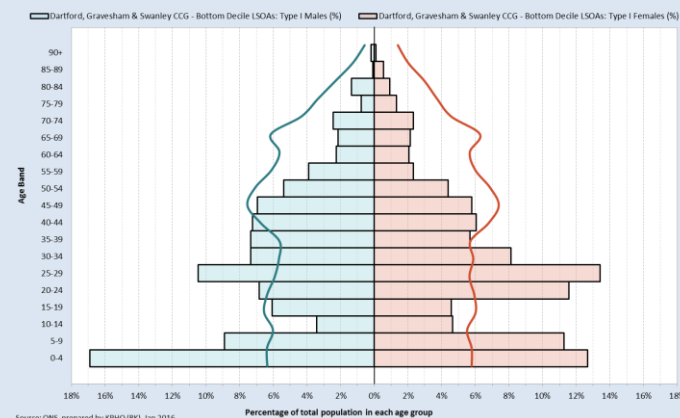
- Particularly high premature mortality rates
- Alcohol-related premature mortality and from 'external causes' particularly high
- High emergency hospital admission rates

Dartford, Gravesham & Swanley CCG Type 1 Deprived LSOAs Northfleet



POPULATION DISTRIBUTION

2014 Resident population in Dartford, Gravesham & Swanley CCG - Bottom Decile LSOAs: Type I compared to Kent

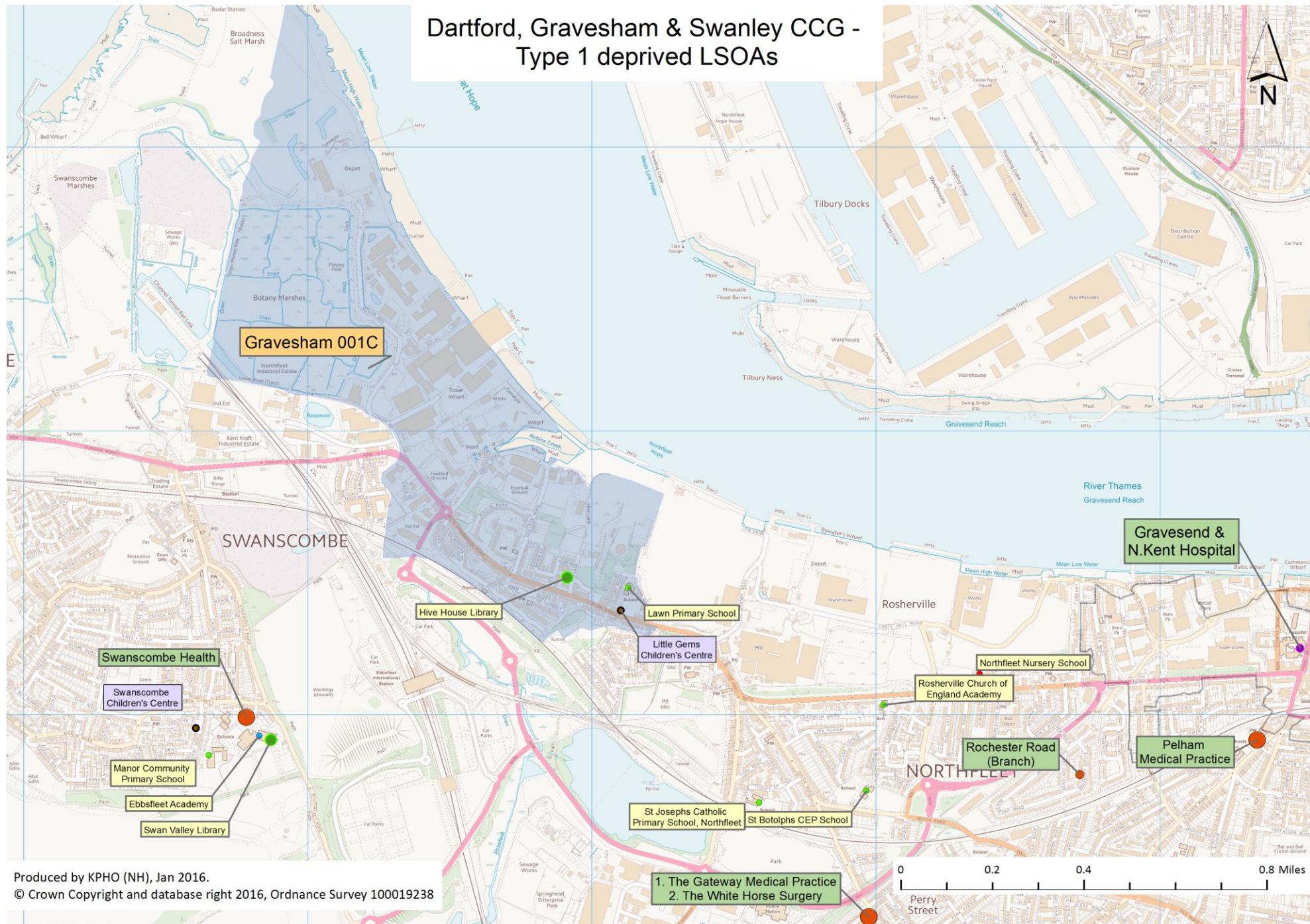


- High numbers of young adults and young children

KEY FOCUS AREAS:

Education and employment opportunities for young people

Dartford, Gravesham & Swanley CCG - Type 1 deprived LSOAs



Families in social housing

MAIN ISSUES

Characteristics

- Families with children in social housing
- Low incomes
- Poor scores for education
- High number of single parents
- Better living environment and lower crime rates than other deprived area types

Health Risks/Behaviours

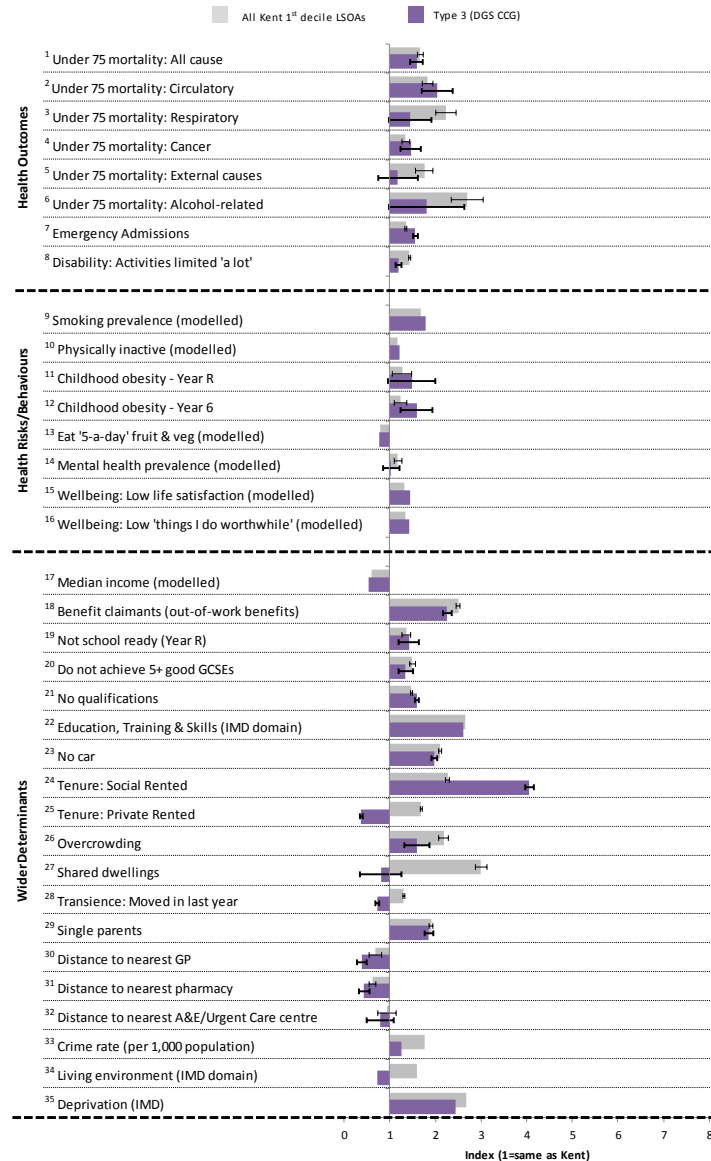
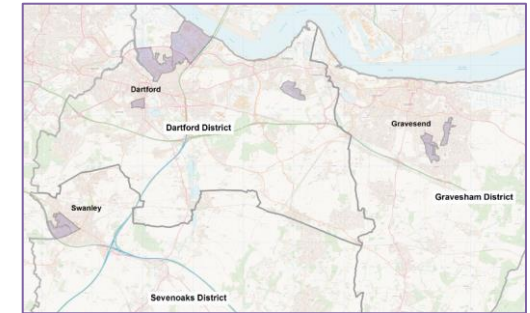
- High smoking prevalence
- High levels of childhood obesity
- Low levels of wellbeing

Health Outcomes

- High premature mortality rates
- High emergency hospital admission rates

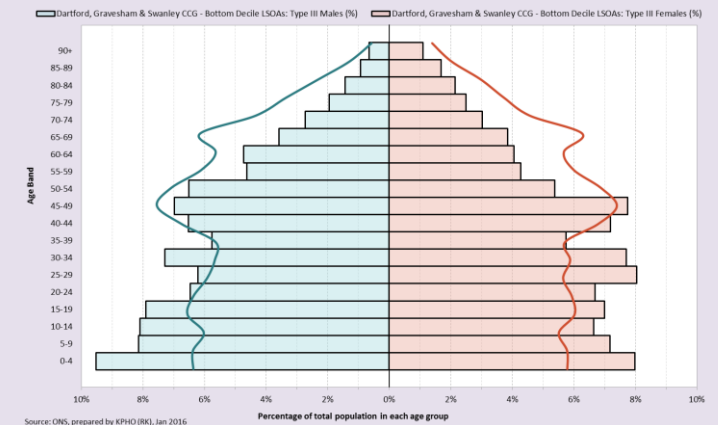
Dartford, Gravesham & Swanley CCG Type 3 Deprived LSOAs

Swanley St Mary's, Dartford, Swanscombe, Kings Farm, Westcourt



POPULATION DISTRIBUTION

2014 Resident population in Dartford, Gravesham & Swanley CCG - Bottom Decile LSOAs: Type III compared to Kent

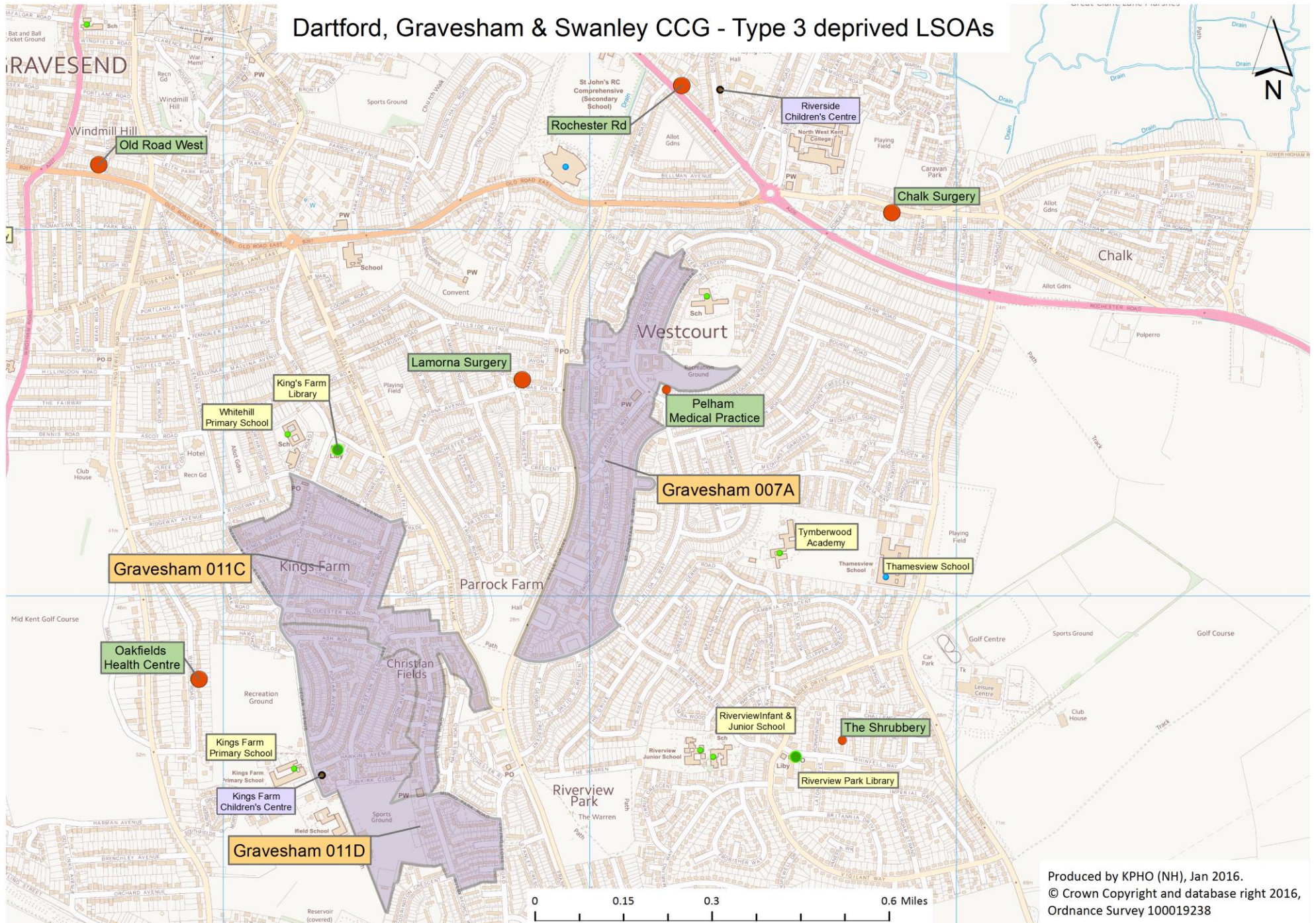


- Very high numbers of children
- High numbers of young adults (particularly women)
- Lower numbers of over 50s

KEY FOCUS AREAS:

Training, qualifications and employment for parents
Child health and education

Dartford, Gravesham & Swanley CCG - Type 3 deprived LSOAs

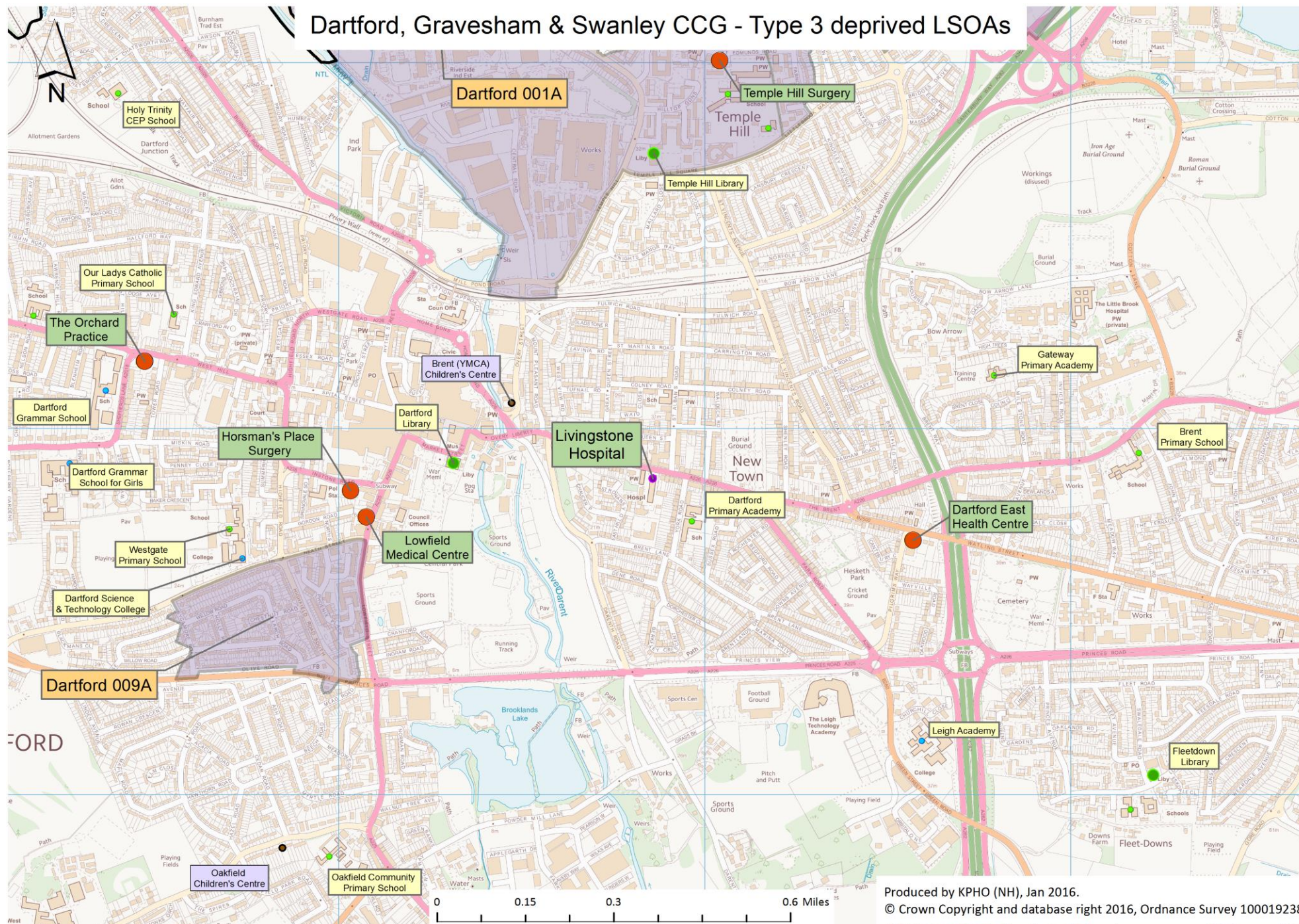


Produced by KPHO (NH), Jan 2016.
 © Crown Copyright and database right 2016,
 Ordnance Survey 100019238

[illegible]

© Crown Copyright and database right 2016, Ordnance Survey 100019238

Dartford, Gravesham & Swanley CCG - Type 3 deprived LSOAs



Produced by KPHO (NH), Jan 2016.

© Crown Copyright and database right 2016, Ordnance Survey 100019238

Dartford, Gravesham & Swanley CCG - Type 3 deprived LSOAs

Map showing the Swanley area, including the River Thames, various roads, and surrounding areas. Key locations marked include:

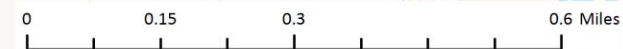
- Swanley Children's Centre
- Horizon Primary School
- St Bartholomews Catholic Primary School
- Swanley Library
- Asda
- Downsview Primary
- The Oaks Partnership GP Surgery
- The Cedars Surgery
- Orchards Academy
- St Marys CEP School
- High Firs Primary School
- Swanley Rail Station
- Swanley Technology College
- Sevenoaks 002B
- Sevenoaks 002A
- Lavender Hill

Produced by KPHO (NH), Jan 2016.
© Crown Copyright and database right 2016, Ordnance Survey 100019238

Scale: 0 to 0.6 Miles

© Crown Copyright and database right 2016, Ordnance Survey 100019238

© Crown Copyright and database right 2016, Ordnance Survey 100019238



Dartford, Gravesham & Swanley CCG - Type 3 deprived LSOAs

The map displays the area around Dartford, with a focus on the SWANSCOMBE area. A pink line highlights the Type 3 deprived LSOA. Various locations are marked with colored dots and labels:

- Ivy Bower Surgery (green dot)
- Swanscombe Health (green dot)
- Greenhithe Library (yellow dot)
- Knockhall Community Primary School (yellow dot)
- Knockhall Children's Centre (purple dot)
- Craylands School (yellow dot)
- Swanscombe Children's Centre (purple dot)
- Swanscombe Health (green dot)
- Ebbsfleet Academy (yellow dot)
- Swan Valley Library (yellow dot)
- Manor Community Primary School (yellow dot)

A large purple area is labeled **Dartford 004C**.

The map includes a scale bar (0 to 0.6 Miles) and a north arrow.

Produced by KPHO (NH), Jan 2016.
© Crown Copyright and database right 2016,
Ordnance Survey 100019238

Young people in poor quality accommodation

MAIN ISSUES

Characteristics

- Young adults in private rented accommodation
- Particularly high levels of overcrowding
- Better educated than other deprivation types
- Particularly poor living environment with particularly high crime rates
- Low incomes, but not as low as other deprivation types
- Particularly high levels of movement/transiency

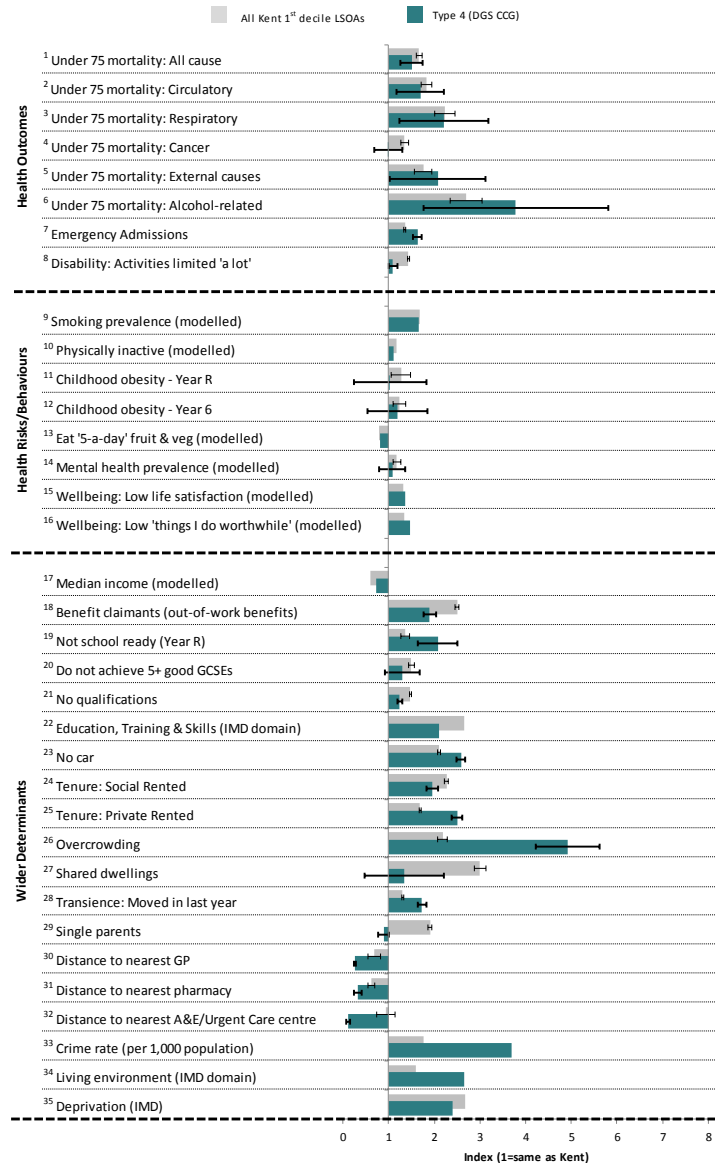
Health Risks/Behaviours

- High smoking prevalence
- Low levels of wellbeing

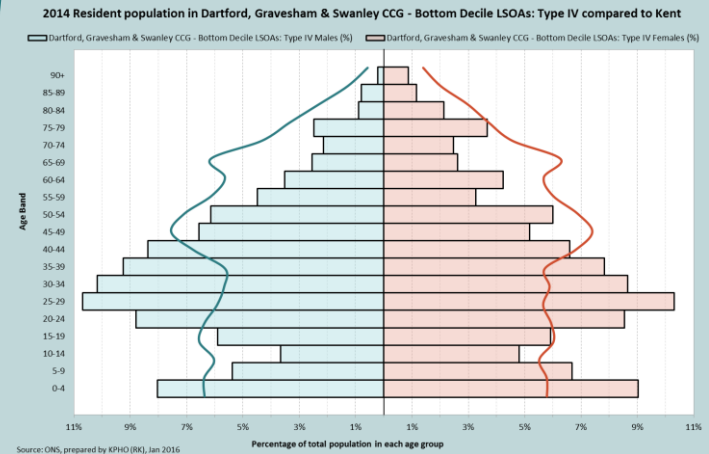
Health Outcomes

- High premature mortality rates
- Particularly high emergency hospital admission rates

Dartford, Gravesham & Swanley CCG Type 4 Deprived LSOAs Central Gravesend



POPULATION DISTRIBUTION



- High numbers of young adults
- High numbers of children under 5
- Lower numbers of older children and teenagers

KEY FOCUS AREAS:

Improve living environment and good affordable housing

Dartford, Gravesham & Swanley CCG - Type 4 deprived LSOAs

Produced by KPHO (NH), Jan 2016.
© Crown Copyright and database right 2016, Ordnance Survey 100019238

A horizontal number line representing distance in miles. The line starts at 0 on the left and ends at 0.6 Miles on the right. There are major tick marks labeled 0, 0.15, 0.3, and 0.6 Miles. Between these major ticks, there are four smaller, unlabeled tick marks, dividing each 0.15-mile segment into five equal parts of 0.03 miles each.

GP Practices

GP Practices Serving Deprived LSOAs: Recorded Disease Prevalence

For the GP practices that serve tenth decile LSOAs, we have analysed the recorded disease prevalence from QOF data (Quality Outcomes Framework). Note that the data shows recorded disease prevalence, and does not account for undiagnosed disease in the community.

- High registered prevalence of Chronic Kidney Disease in a number of these practices.
- The Cedars Surgery and Horsman's Place Surgery appear to have high recorded disease prevalence across a number of conditions.

GP Practice	Asthma	Atrial Fibrillation	Cancer	Coronary Heart Disease	Chronic Kidney Disease	COPD	Diabetes	Heart Failure	Hypertension	Stroke & TIA	Mental health	Dementia	Epilepsy	Depression	Learning Disabilities
G82006 Dartford East Health Centre	5.3	1.2	1.6	2.2	4.8	1.5	6.0	0.2	12.9	1.1	0.5	0.4	0.8	4.4	0.1
G82028 The Cedars Surgery	4.8	2.1	2.6	3.2	6.4	2.9	6.6	0.9	18.8	2.3	0.6	0.6	0.8	5.6	0.2
G82032 Pelham Medical Practice	4.6	1.5	1.6	3.3	7.0	1.7	7.2	0.6	18.6	1.7	0.8	0.6	1.0	3.7	0.4
G82044 The Gateway Medical Practice	5.2	1.8	1.8	3.1	6.0	2.2	6.4	0.6	15.8	1.7	0.9	0.7	1.1	4.5	0.2
G82048 Horsman's Place Surgery	5.6	1.8	2.7	3.6	7.5	2.2	6.9	0.8	16.9	1.9	1.4	0.6	1.0	14.0	0.5
G82122 Swanscombe Health Centre	3.5	1.3	1.6	2.3	3.6	1.4	6.3	0.5	14.8	1.3	0.7	1.0	0.8	2.4	0.2
G82143 Lowfield Medical Centre	5.8	1.6	1.8	3.2	2.4	1.9	6.5	0.5	14.6	1.9	0.7	0.7	0.8	5.9	0.5
G82225 The Oaks Partnership	7.2	2.0	2.0	3.2	4.6	2.3	7.1	0.7	15.4	1.7	0.7	0.6	0.9	8.2	0.3
G82647 Temple Hill Surgery	3.9	0.8	1.2	1.8	3.5	1.4	5.8	0.3	9.8	1.0	1.0	1.5	0.7	4.9	0.3
G82780 Gravesend Medical Centre	4.5	1.0	1.5	1.8	5.1	1.6	5.8	0.4	9.7	1.1	0.9	0.5	0.9	2.4	0.3
G82808 Oakfield Health Centre, Practice 2	6.1	1.3	2.0	2.8	9.7	2.0	7.1	0.4	14.6	1.9	0.7	0.8	0.9	5.7	0.4
Y02826 White Horse Surgery	4.1	0.5	0.8	1.2	1.3	0.8	5.0	0.2	6.9	0.6	0.6	0.2	0.5	2.8	0.1

Denotes value is in the upper quartile for GP practices in Kent Denotes value is in the lower quartile for GP practices in Kent

Figures for chronic kidney disease (CKD), epilepsy and depression related to patients aged 18+, figures for diabetes to patients aged 17+. Other measures (including learning disability) related to all ages

Source: HSCIC - Quality and Outcomes Framework (QOF) for April 2014 - March 2015, prepared by KPHO (RK), December 2015

Data Sources

- 1-6** Age-standardised mortality rates, 2006-2014. Source: PCMD. **2** ICD10: I00-I99. **3** ICD10: J00-J99. **4** ICD10: C00-C97. **5** ICD10: U00-Y99. **6** ICD10: F10, G31.2, G62.1, I42.6, K29.2, K70, K73, K74, K86.0, X45, X65, Y15.
- 7** Emergency admissions, 2012/13-2013/14. Source: SUS.
- 8** % self-reporting day-to-day activities 'limited a lot', 2011. Source: Census .
- 9** Modelled based on smoking prevalence data by Mosaic type. Source: Experian (TGI: 'Heavy', 'Medium' & 'Light' smokers combined).
- 10** Modelled based on % who do not exercise by Mosaic type. Source: Experian (TGI).
- 11-12** % children measured who were obese, 2013/14. Source: NCMP.
- 13** Modelled based on % who claim to eat '5-a-day' fruit and vegetables by Mosaic type. Source: Experian (TGI).
- 14** Modelled mental health prevalence based on GP practice-level data, 2014/15. Source: QOF.
- 15-16** Modelled wellbeing based on ONS Annual Population Survey (APS) data by Acorn type, 2011/12. Source: DCLG. **15** % scoring 0-6 for 'Overall, how satisfied are you with your life nowadays?' **16** % scoring 0-6 for 'Overall, to what extent do you feel the things you do in your life are worthwhile?'
- 17** Modelled based on median household income data by Mosaic type. Source: Experian (ConsumerView).
- 18** % claiming out of work benefits (defined as all those aged 16-64 who are jobseekers, claiming ESA & incapacity benefits, lone parents claiming Income Support and others on income related benefits), February 2015. Source: DWP (from Nomis).
- 19** % Year R pupils not achieving a good level of development, 2015. Source: KCC, MIU.
- 20** % pupils not achieving 5+ A*-C GCSEs (including English & Maths) at the end of Key Stage 4, 2015. Source: KCC, MIU.
- 21** % with no qualifications (based on persons aged 16+), 2011. Source: Census.
- 22** Education, Training & Skills IMD domain (average score), 2015. Source: DCLG.
- 23** % of households with no car or van, 2011. Source: Census.
- 24** % of households living in social rented accommodation, 2011. Source: Census.
- 25** % of households living in private rented accommodation, 2011. Source: Census.
- 26** % of households with an occupancy rating of -2 (i.e. with 2 too few rooms), 2011. Source: Census.
- 27** % of households with accommodation type 'shared dwellings', 2011. Source: Census.
- 28** % of households not living at the same address a year ago, 2011. Source: Census. Please note that OAs E00124937 & E00166800 have been removed from this analysis due to the undue influence of Eastchurch prison on levels of transience.
- 29** % of households with no adults or one adult and one or more children, 2011. Source: Census.
- 30-32** Distance to nearest GP/pharmacy/A&E or Urgent Care centre (in miles, as the crow flies from population weighted centroid of LSOA), 2015. Source: KCC Business Intelligence.
- 33** Crime rate (recorded crime per 1,000 population), Oct 2013 - Sept 2015. Source: data.police.uk.
- 34** Living Environment IMD domain (average score), 2015. Source: DCLG.
- 35** Index of Multiple Deprivation (IMD) (average score), 2015. Source: DCLG.