

Pharmaceutical Needs Assessment – NHS Dartford, Gravesham and Swanley CCG

Supplementary data and maps
data correct as of March 2018

Produced by

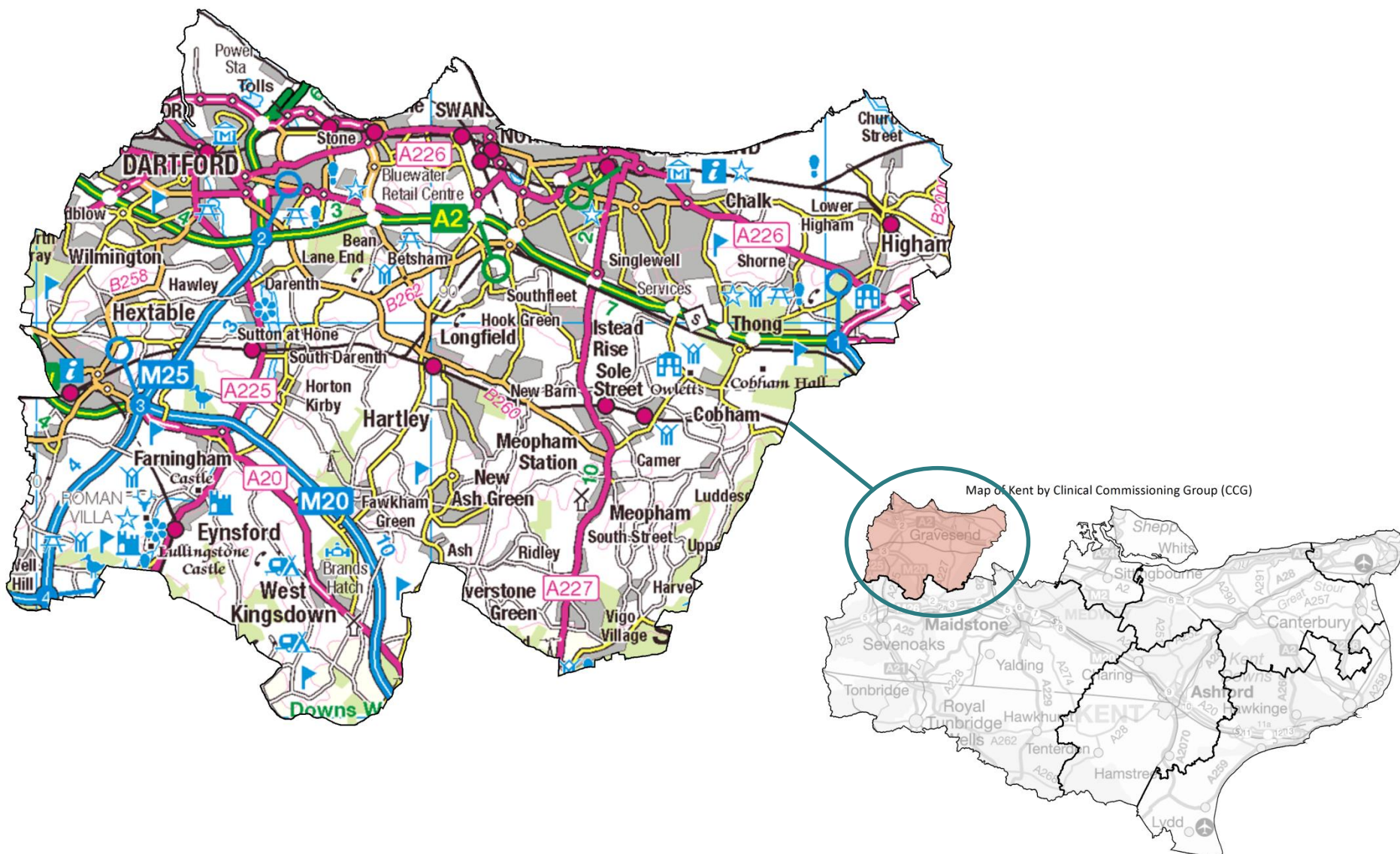
Cheryl Clennett, Consultant Pharmacist
Julian Barlow, Senior Public Health Intelligence Analyst
Matthew Pateman, Public Health Analyst
Lauren Liddell-Young, Public Health Information Officer

Final Version
Last updated: March 2018

Contents

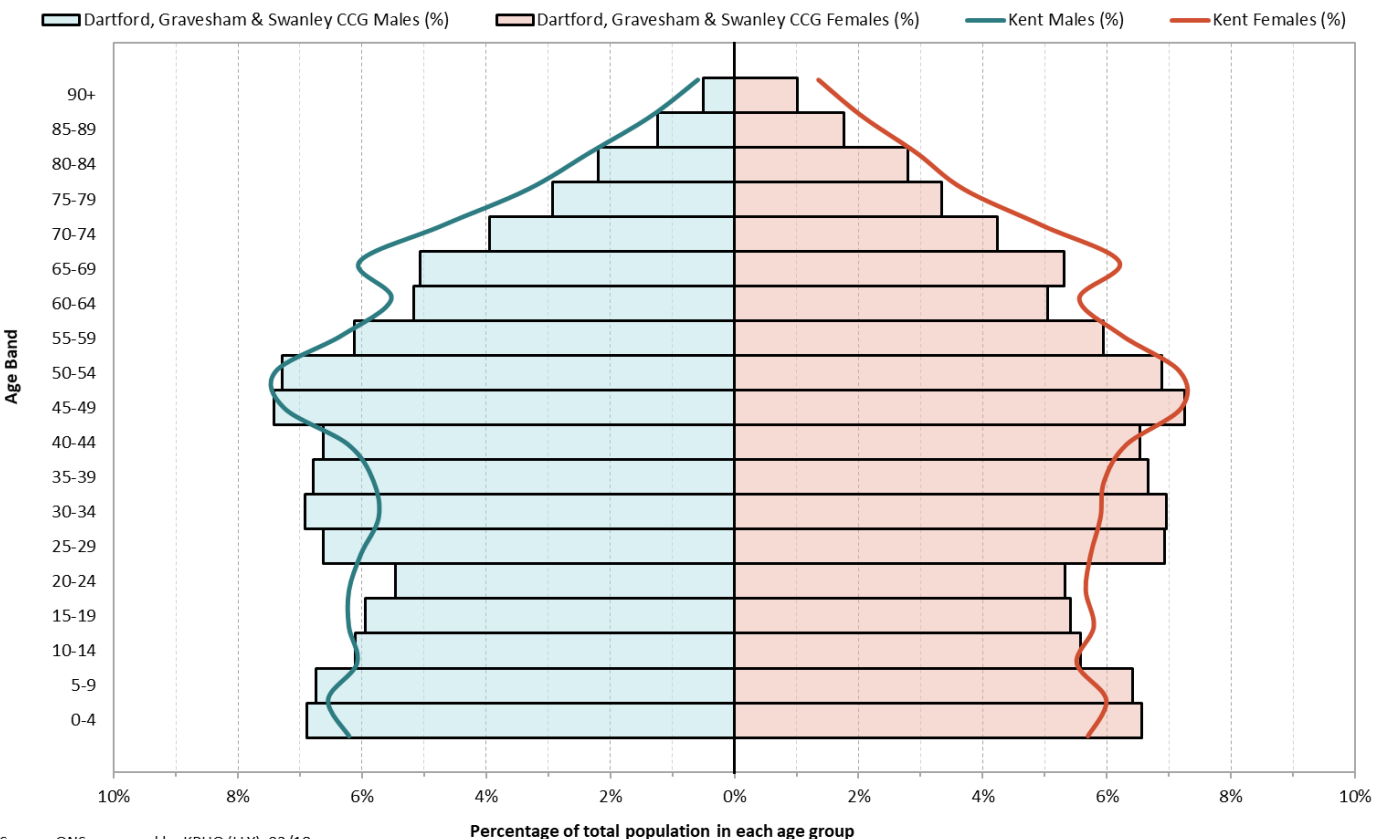
- [Orientation](#)
- [Current population](#)
- [Population density](#)
- [Population growth](#)
- [Ethnicity profile](#)
- [Index of multiple deprivation](#)
- [Location of pharmaceutical services](#)
- [Distance rings around community pharmacies](#)
- [Pharmacies providing medicines use review](#)
- [Pharmacies providing new medicines service](#)
- [Pharmacies and appliance contractors providing stoma customisation and appliance use reviews](#)
- [Healthy Living pharmacies](#)
- [General practices](#)
- [NHS flu vaccination](#)

Orientation – Dartford, Gravesham and Swanley CCG



Current population

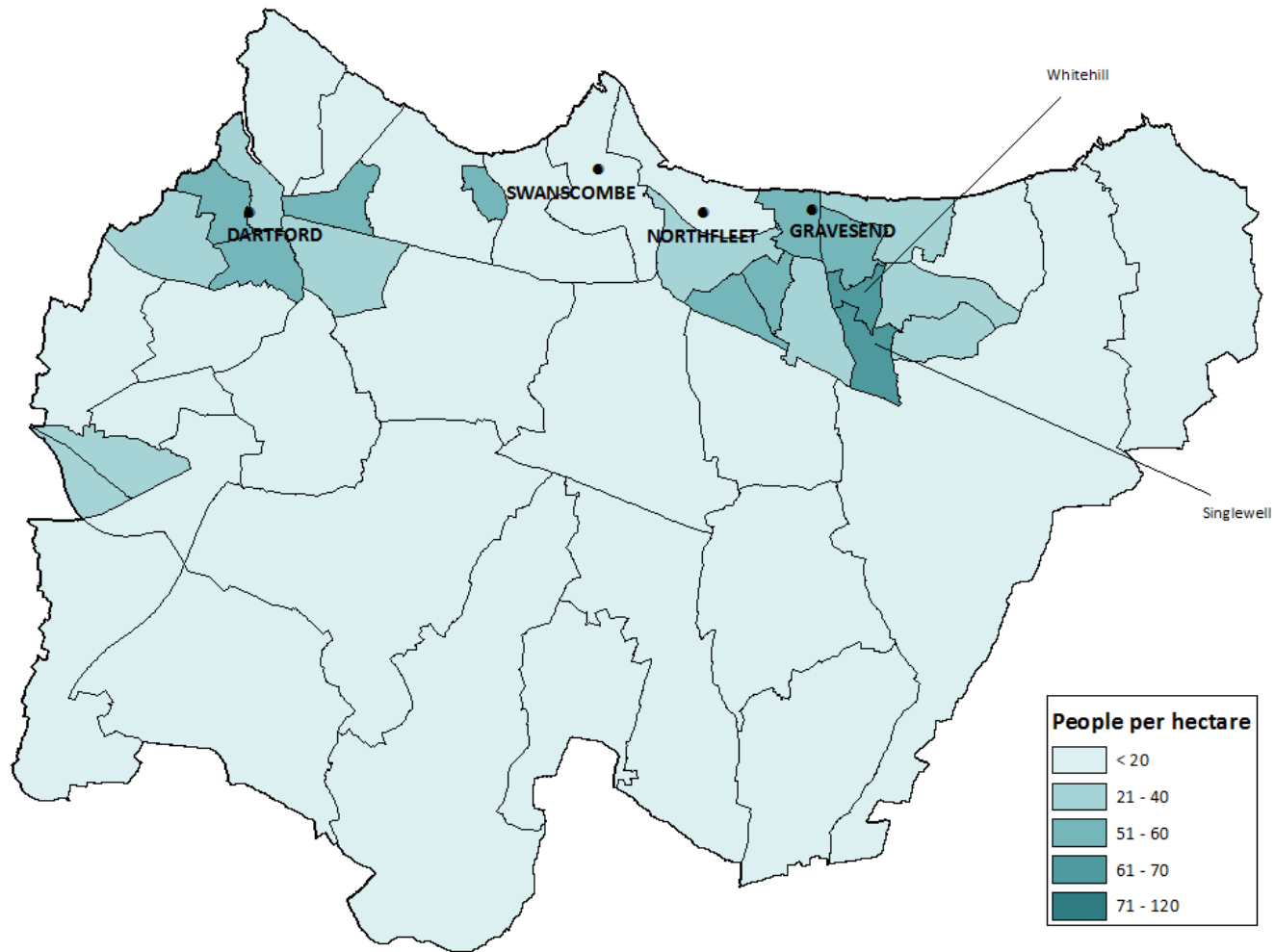
2016 resident population in Dartford, Gravesham & Swanley CCG compared to Kent



Mid-year estimates for 2016: Dartford, Gravesham & Swanley CCG			
Age band	Female	Male	Persons
0-4	8,702	8,828	17,530
05-09	8,506	8,640	17,146
10-14	7,402	7,829	15,231
15-19	7,182	7,624	14,806
20-24	7,070	6,989	14,059
25-29	9,194	8,477	17,671
30-34	9,225	8,862	18,087
35-39	8,833	8,688	17,521
40-44	8,657	8,480	17,137
45-49	9,618	9,503	19,121
50-54	9,142	9,324	18,466
55-59	7,892	7,850	15,742
60-64	6,702	6,625	13,327
65-69	7,037	6,475	13,512
70-74	5,624	5,050	10,674
75-79	4,433	3,758	8,191
80-84	3,710	2,801	6,511
85-89	2,341	1,582	3,923
90	1,340	648	1,988
All ages	132,610	128,033	260,643

Source: ONS, prepared by KPHO (LLY), 02/18

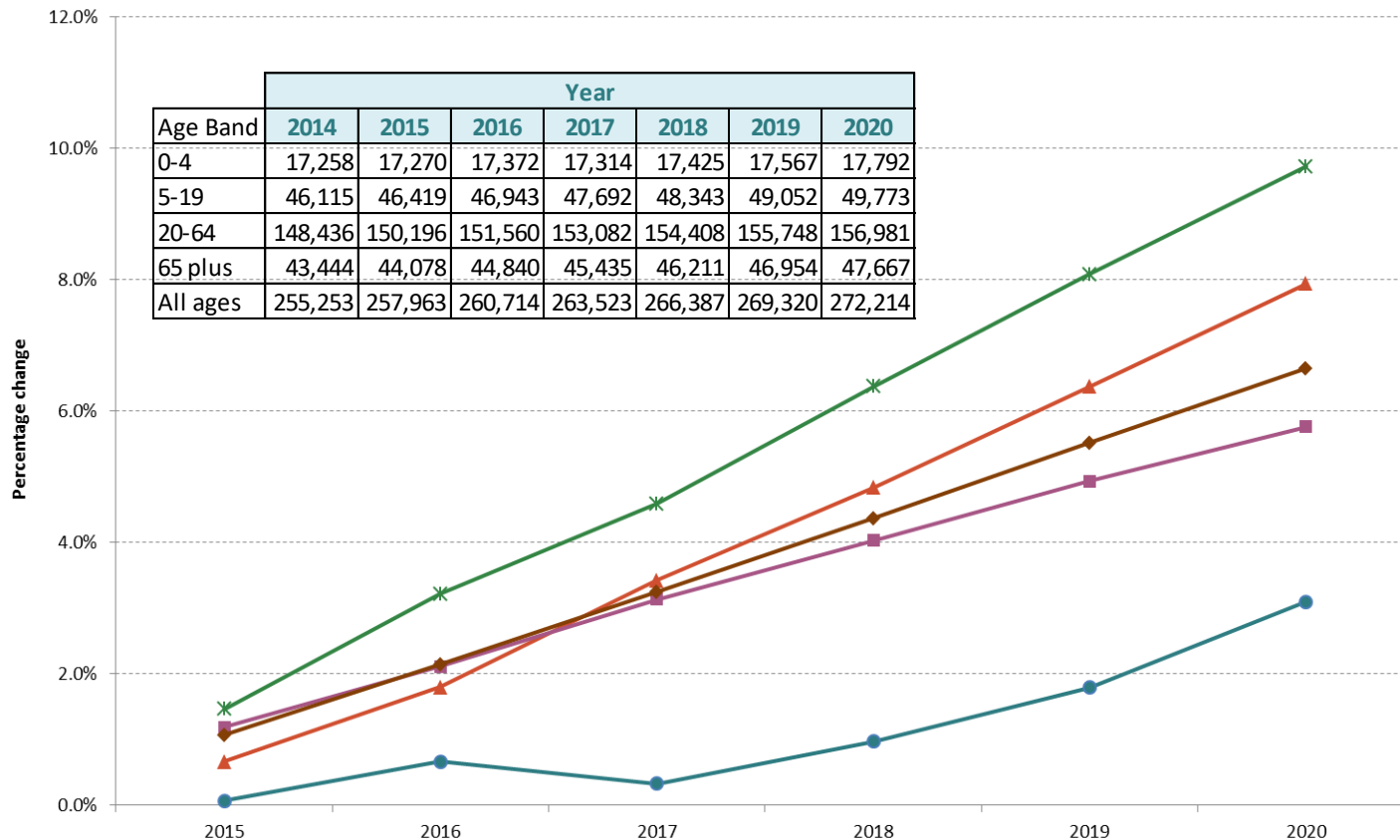
Population density (2015, by ward)



Population growth

Population Growth: NHS Dartford, Gravesham & Swanley CCG for 2015 to 2020 from 2014

0-4 5-19 20-64 65 plus All ages



Source: ONS 2014 based population projections, prepared by KPHO (LLY), 07/17

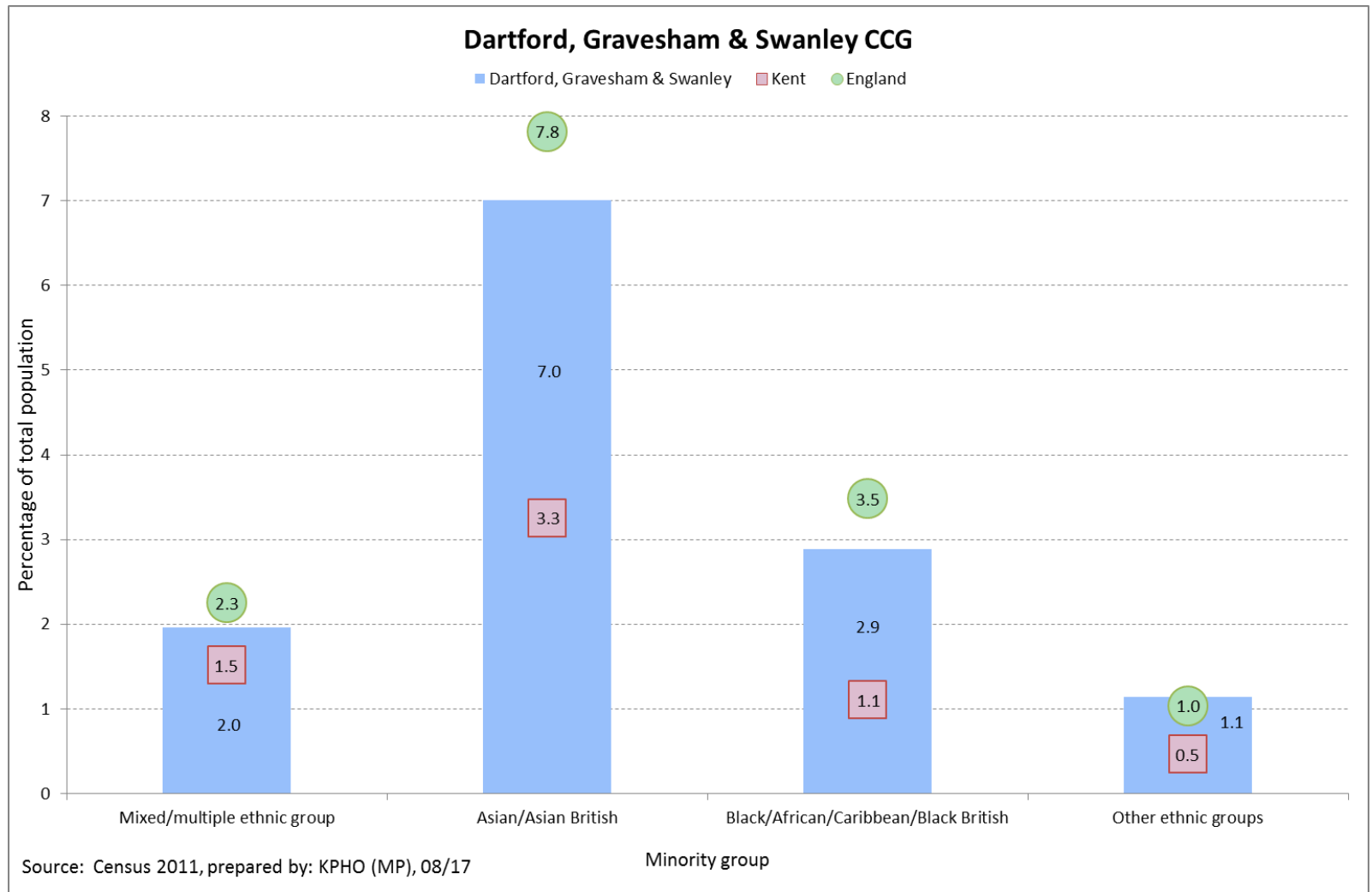
The chart shows the percentage growth of Dartford, Gravesham & Swanley CCG's projected population from 2015 to 2020.

This uses a baseline of 2014 population to calculate the percentage growth and is split into different age-bandings.

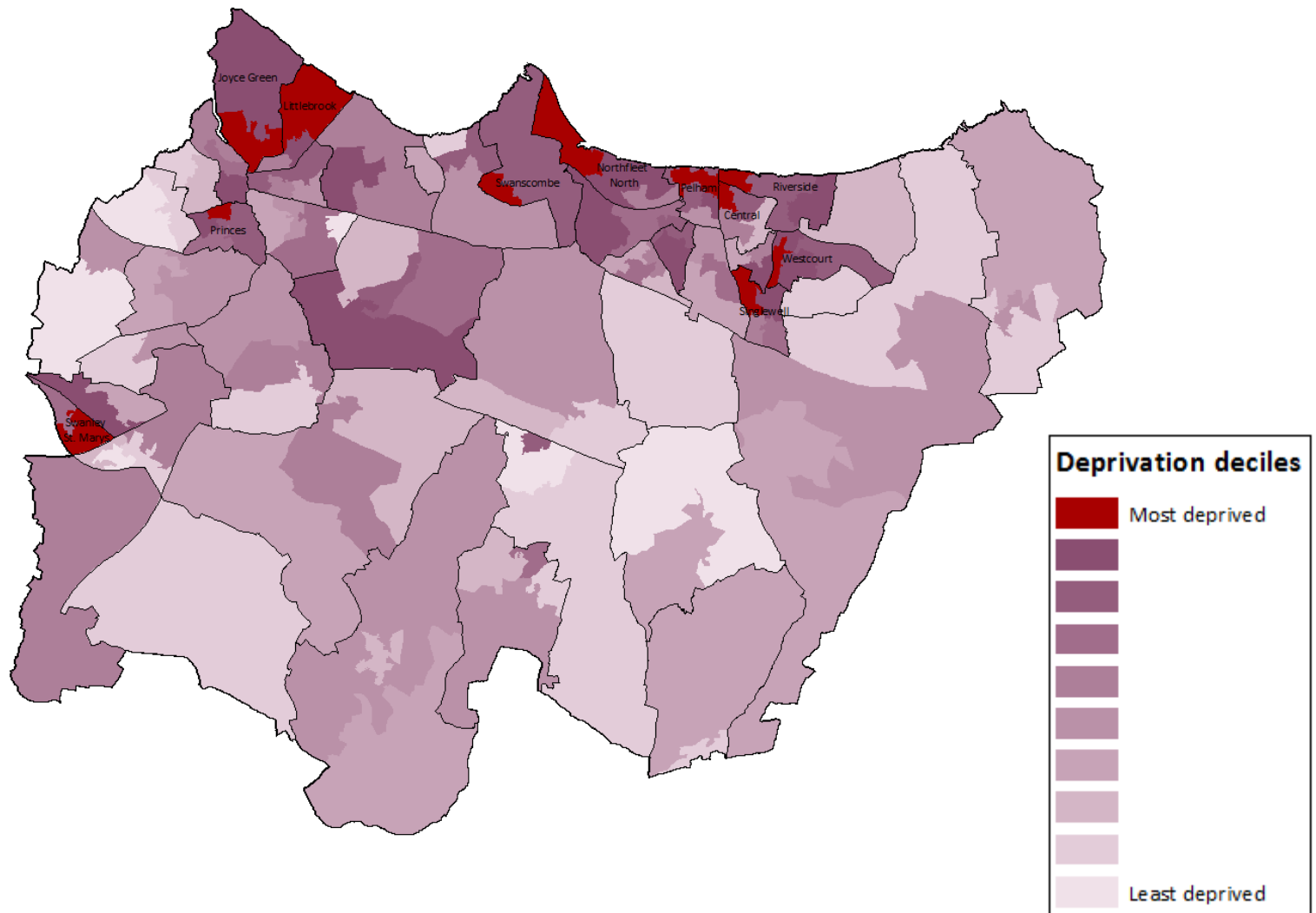
The table provides the total number of the different age-bandings for the baseline population (2014) and the projected population from 2015 to 2020.

While population is increasing for all age bands the greatest growth is seen in the 65 years and over age band.

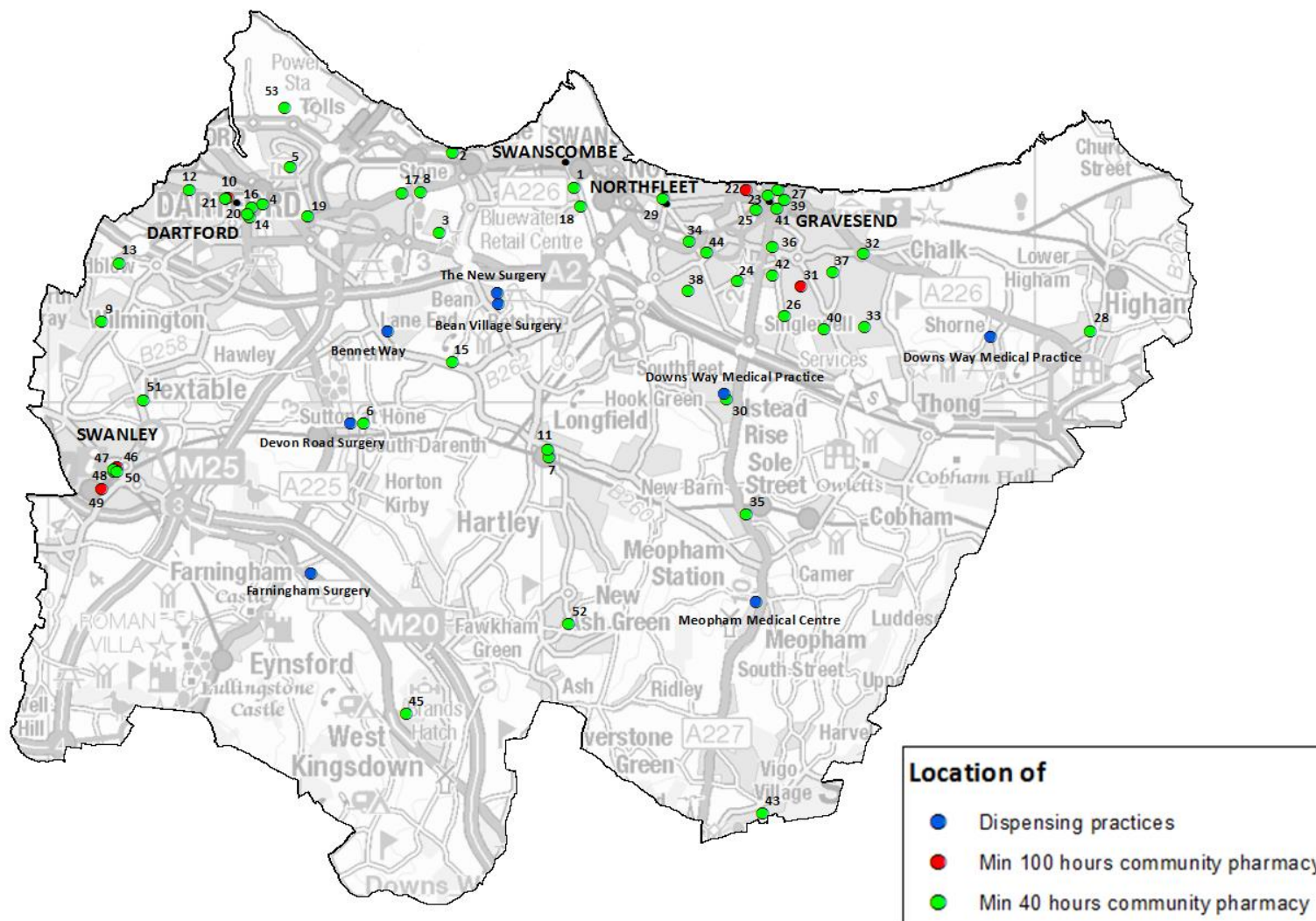
Ethnicity profile



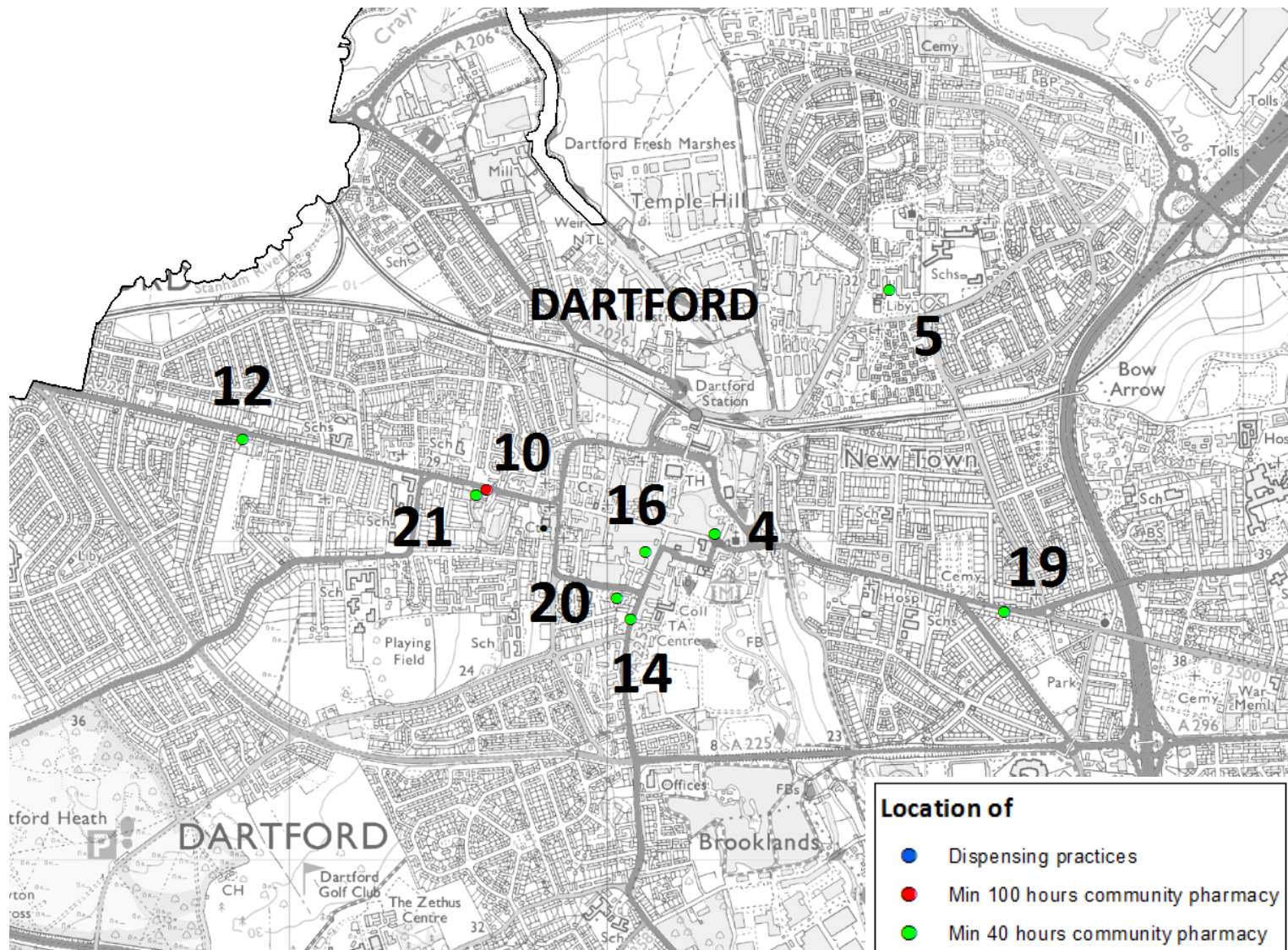
Index of multiple deprivation (2015, Kent deciles)



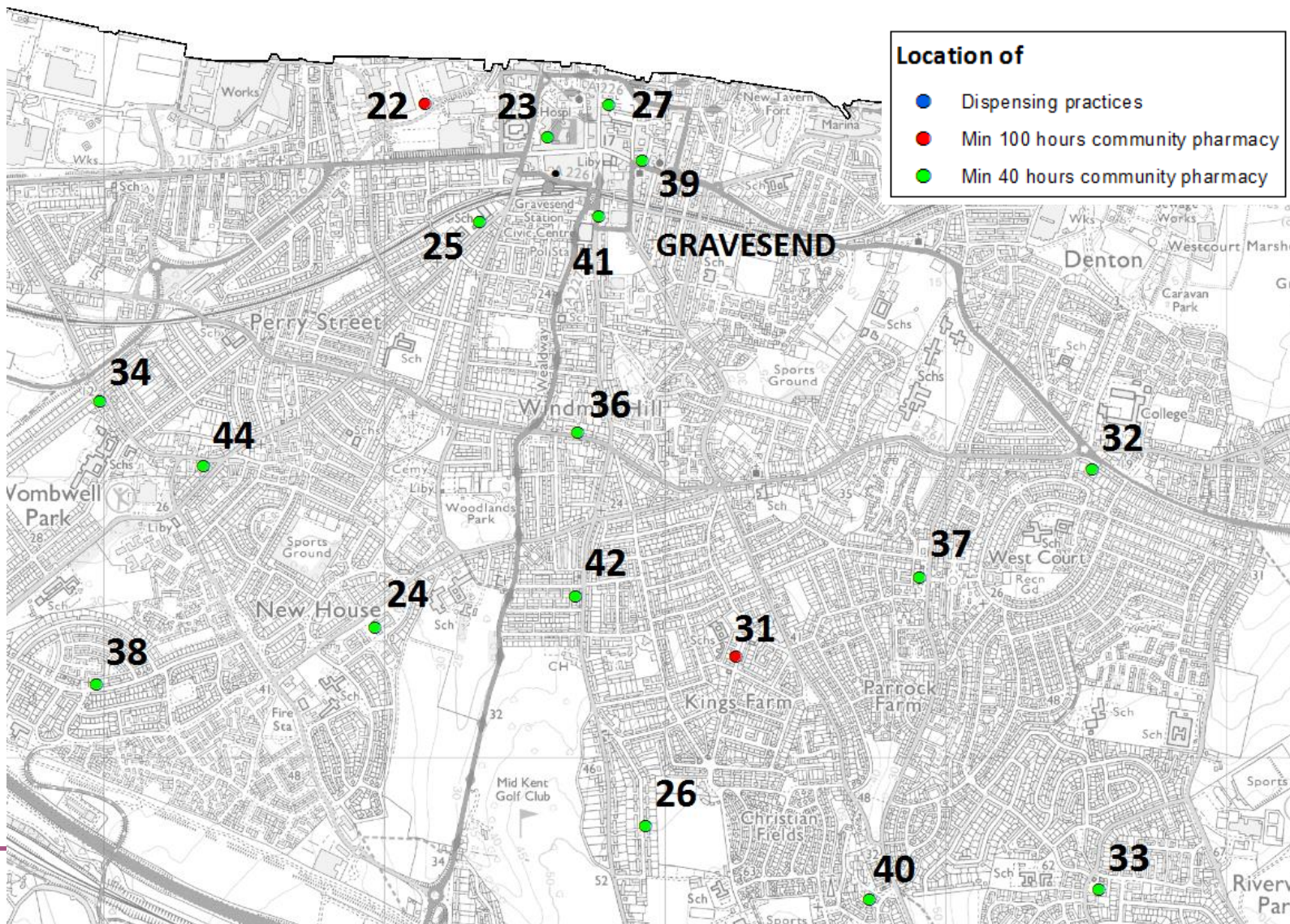
Providers of pharmaceutical services



Providers of pharmaceutical services: Dartford



Providers of pharmaceutical services: Gravesend



Providers of pharmaceutical services

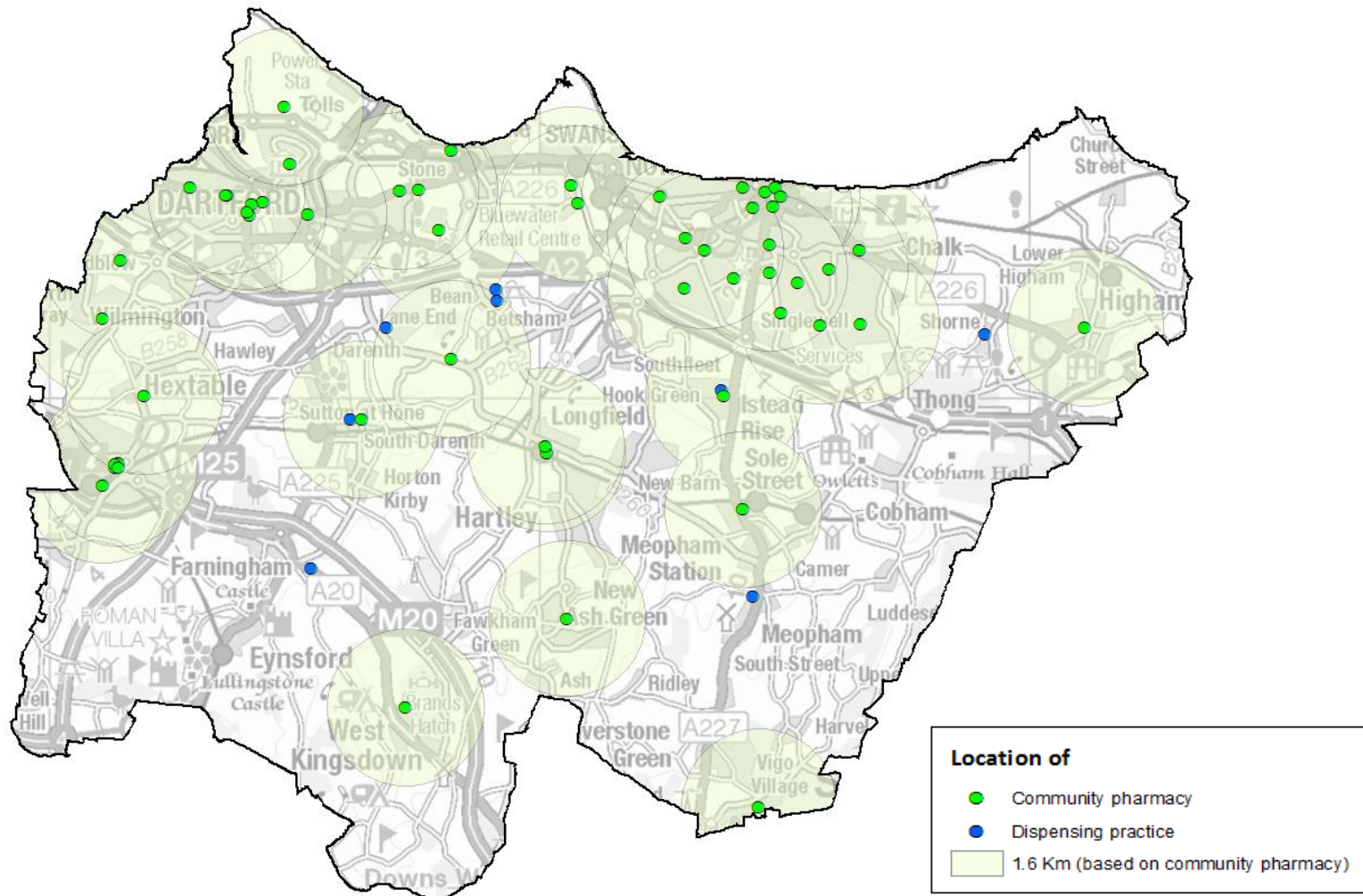
Community Pharmacies					
ID	Locality	Ward (2011)	Trading name	Postcode	Contract
1	Dartford	Swanscombe	Ackers Chemists	DA100HF	Min 40 hours
2	Dartford	Stone	Asda Pharmacy	DA99BT	Min 40 hours
3	Dartford	Stone	Boots	DA99SJ	Min 40 hours
4	Dartford	Town	Boots	DA11DE	Min 40 hours
5	Dartford	Joyce Green	Daysol Pharmacy	DA15HY	Min 40 hours
6	Dartford	Farningham, Horton Kirby & South Darenth	Hobbs Pharmacy	DA49AF	Min 40 hours
7	Dartford	Longfield, New Barn & Southfleet	Hodgson Pharmacy	DA37QA	Min 40 hours
8	Dartford	Stone	Homestyle Positive	DA99JZ	Min 40 hours
9	Dartford	Joydens Wood	Joydens Wood Pharmacy	DA27NJ	Min 40 hours
10	Dartford	West Hill	Lloyds Pharmacy	DA12EU	Min 100 hours
11	Dartford	Longfield, New Barn & Southfleet	Lloyds Pharmacy	DA37QD	Min 40 hours
12	Dartford	West Hill	M. D. Moore Pharmacy	DA13EN	Min 40 hours
13	Dartford	Joydens Wood	McQueen's Pharmacy	DA27WX	Min 40 hours
14	Dartford	Town	Paydens	DA11HP	Min 40 hours
15	Dartford	Bean & Darenth	S & S Chopra	DA28DR	Min 40 hours
16	Dartford	Town	Lloyds Pharmacy in Sainsbury's	DA12HS	Min 40 hours
17	Dartford	Stone	Stone Pharmacy	DA99DF	Min 40 hours
18	Dartford	Swanscombe	Swan Valley Pharmacy	DA100BF	Min 40 hours
19	Dartford	Brent	The Brent Pharmacy	DA11YD	Min 40 hours
20	Dartford	Town	Well Pharmacy	DA12JP	Min 40 hours
21	Dartford	West Hill	West Hill Pharmacy	DA12EF	Min 40 hours
22	Gravesham	Pelham	Asda Pharmacy	DA110DQ	Min 100 hours
23	Gravesham	Pelham	Boots	DA110TA	Min 40 hours
24	Gravesham	Coldharbour	Chadwicks Chemist	DA117HW	Min 40 hours
25	Gravesham	Pelham	Darnley Pharmacy	DA110HN	Min 40 hours
26	Gravesham	Woodlands	Echo Pharmacy	DA125BW	Min 40 hours
27	Gravesham	Riverside	Gravesend Medical Centre Pharmacy	DA122EN	Min 40 hours

Community Pharmacies					
ID	Locality	Ward (2011)	Trading name	Postcode	Contract
28	Gravesham	Higham	Lawsat Pharm Ltd	ME37AT	Min 40 hours
29	Gravesham	Northfleet North	Hill Pharmacy	DA119EU	Min 40 hours
30	Gravesham	Istead Rise	Istead Rise Pharmacy	DA139JF	Min 40 hours
31	Gravesham	Whitehill	Kings Pharmacy	DA125HY	Min 100 hours
32	Gravesham	Westcourt	Lion Pharmacy	DA124TY	Min 40 hours
33	Gravesham	Riverview	Lloyds Pharmacy	DA124NG	Min 40 hours
34	Gravesham	Northfleet South	Lloyds Pharmacy	DA118BZ	Min 40 hours
35	Gravesham	Meopham North	Meopham Pharmacy	DA130HP	Min 40 hours
36	Gravesham	Pelham	N B Pharmacy Ltd	DA110LJ	Min 40 hours
37	Gravesham	Whitehill	Nicholson & Keep	DA125RT	Min 40 hours
38	Gravesham	Painters Ash	Pender Chemist	DA118LG	Min 40 hours
39	Gravesham	Riverside	Pender Pharmacy	DA122RE	Min 40 hours
40	Gravesham	Singlewell	R S Bains	DA125DZ	Min 40 hours
41	Gravesham	Central	Regent Pharmacy	DA121AS	Min 40 hours
42	Gravesham	Woodlands	Singlewell Pharmacy	DA117QA	Min 40 hours
43	Gravesham	Meopham South & Vigo	Vigo Pharmacy	DA130TD	Min 40 hours
44	Gravesham	Northfleet South	Williams Chemists	DA118BS	Min 40 hours
45	Gravesham	Fawkham & West Kingsdown	Lloyds Pharmacy	TN156HD	Min 40 hours
46	Swanley	Swanley White Oak	Asda Pharmacy	BR87UN	Min 100 hours
47	Swanley	Swanley St Mary's	Boots	BR87TL	Min 40 hours
48	Swanley	Swanley St Mary's	Swanley Pharmacy	BR87TQ	Min 40 hours
49	Swanley	Swanley Christchurch & Swanley Village	Thales Pharmacy	BR88HS	Min 100 hours
50	Swanley	Swanley St Mary's	Well Pharmacy	BR87TG	Min 40 hours
51	Swanley	Hextable	Village Pharmacy	BR87RB	Min 40 hours
52	Swanley	Ash	Village Pharmacy	DA38JB	Min 40 hours
53	Dartford	Joyce Green	Delmergate Ltd	DA15FP	Min 40 hours

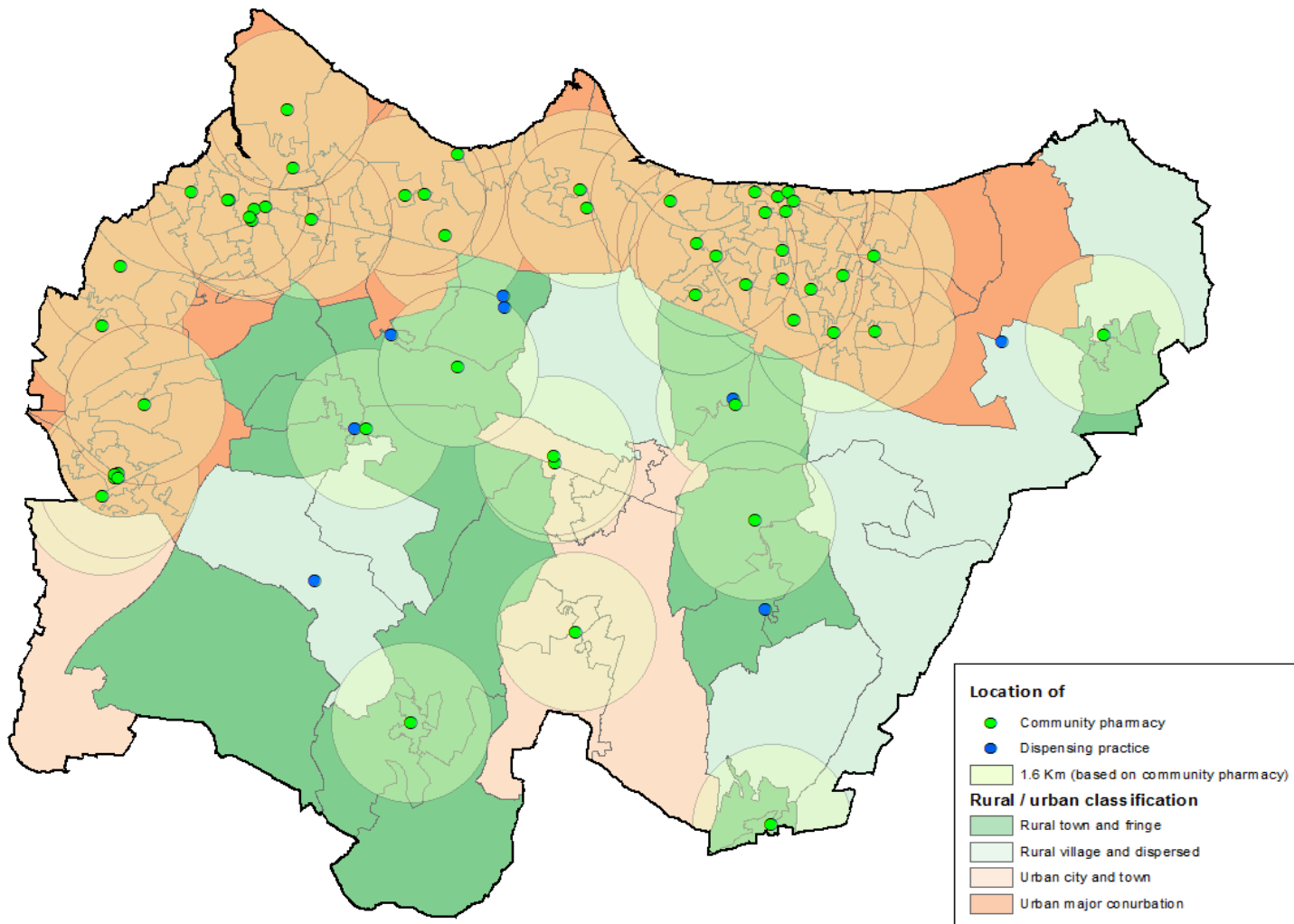
Providers of pharmaceutical services

Dispensing Practices						
ID	Practice Code	Practice name	Main site?	Dispensing at site?	Postcode	Ward (2011)
1	G82073	Meopham Medical Centre	Y	Yes	DA130AH	Meopham North
2	G82088	Devon Road Surgery	Y	Yes	DA49AB	Sutton-at-Hone & Hawley
3	G82122	Bean Village Surgery	N	Yes	DA28BS	Bean & Darenth
4	G82218	Farningham Surgery	Y	Yes	DA40JU	Farningham, Horton Kirby & South Darenth
5	G82221	The New Surgery	N	Yes	DA28BG	Bean & Darenth
6	G82710	Bennet Way	Y	Yes	DA27JT	Bean & Darenth
7	G82809	Downs Way Medical Practice	Y	Yes	DA139LB	Istead Rise
8	G82809	Downs Way Medical Practice	N	Yes	DA123DY	Shorne, Cobham & Luddesdown

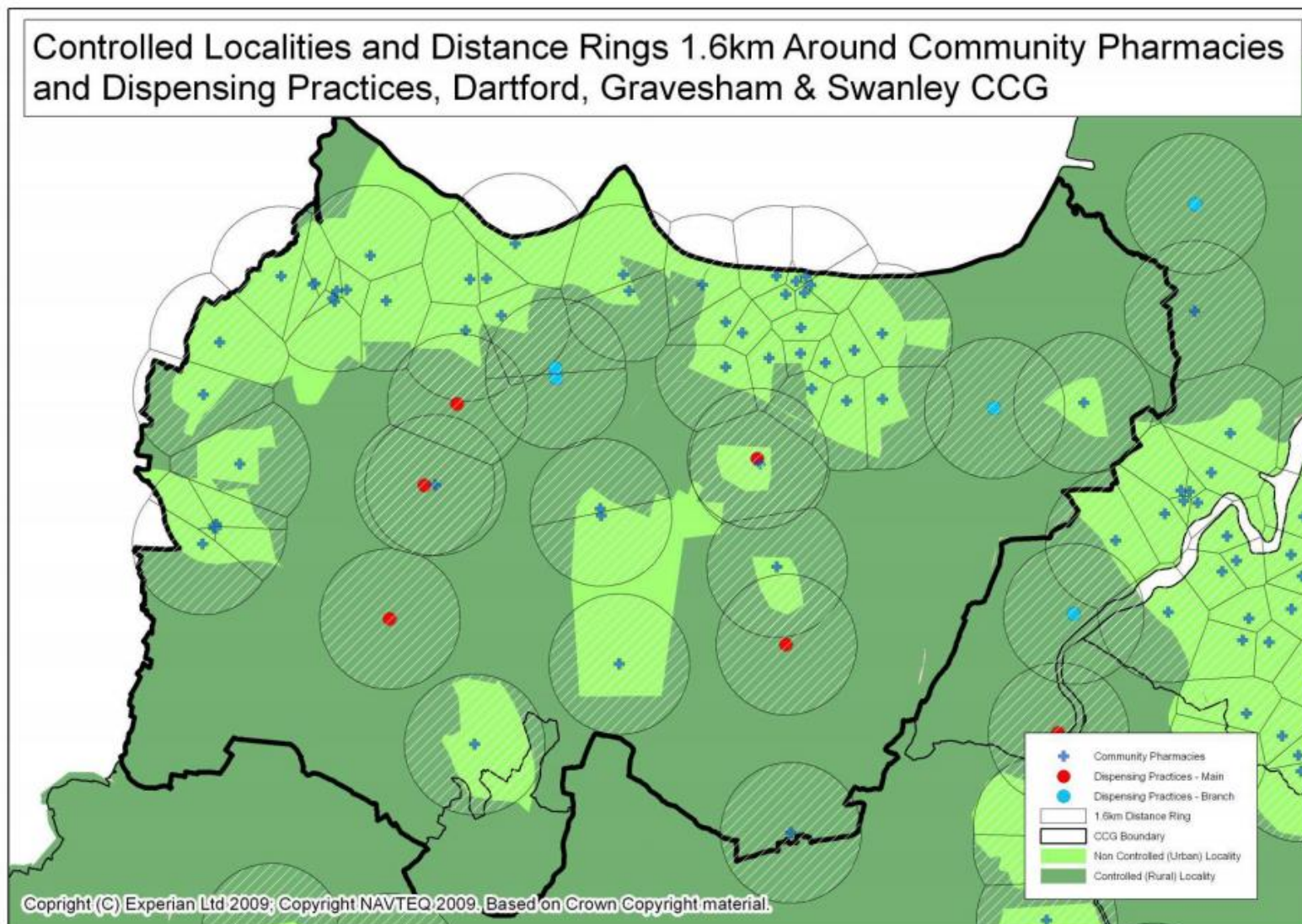
Distance rings (1.6km) around community pharmacies



Distance rings (1.6km) around community pharmacies with rural urban classification (2011)



Controlled localities and distance rings



KENT PUBLIC HEALTH
OBSERVATORY

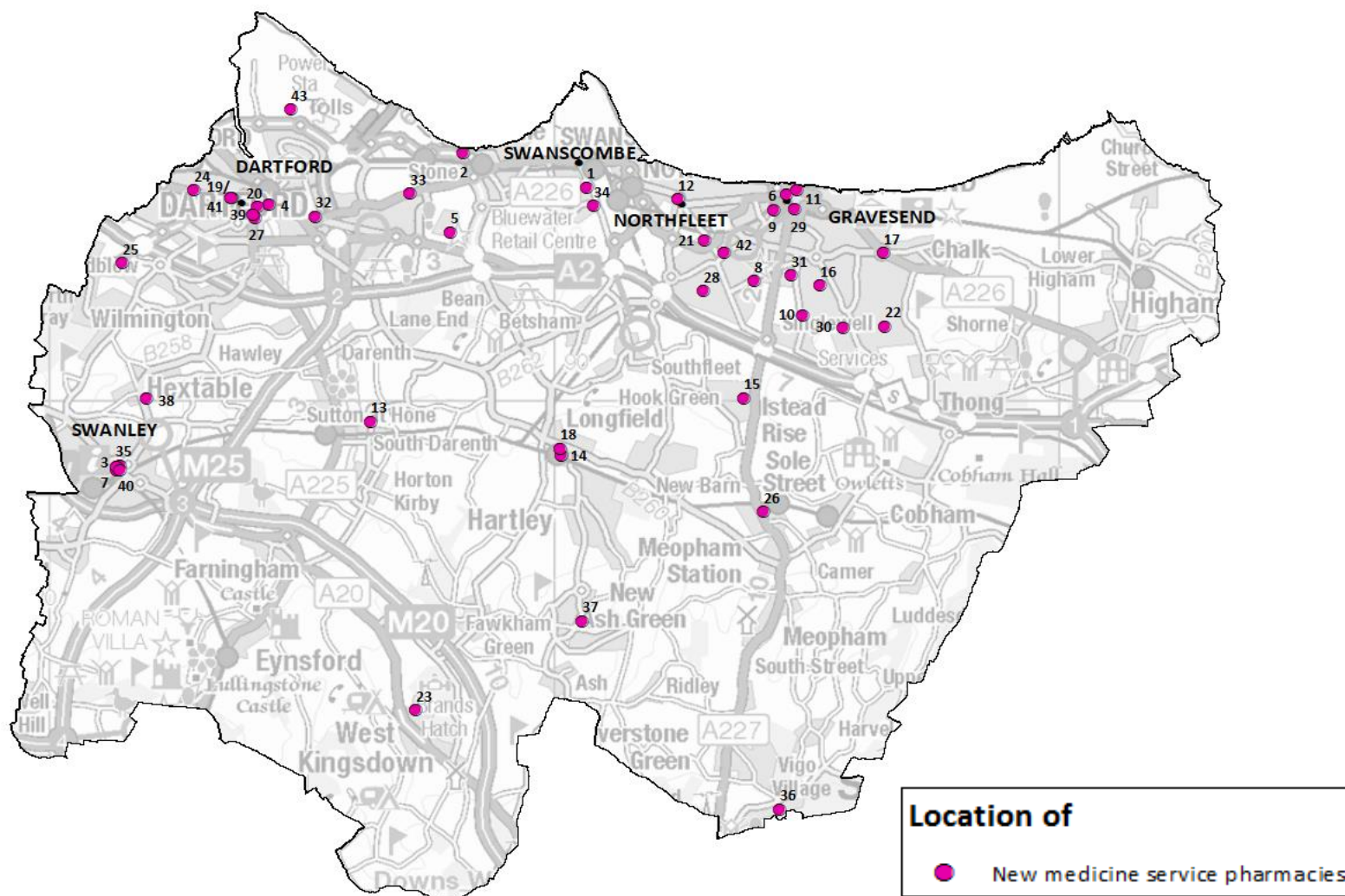


Pharmacies providing medicines use review

Medicine use review pharmacies			
ID	Pharmacy Name	Postcode	Ward (2011)
1	Ackers Chemists	DA100HF	Swanscombe
2	Asda Pharmacy	DA110DQ	Pelham
3	Asda Pharmacy	DA99BT	Stone
4	Asda Pharmacy	BR87UN	Swanley White Oak
5	Boots	DA11DE	Town
6	Boots	DA99SJ	Stone
7	Boots	DA110TA	Pelham
8	Boots	BR87TL	Swanley St Mary's
9	Chadwicks Chemist	DA117HW	Coldharbour
10	Darnley Pharmacy	DA110HN	Pelham
11	Echo Pharmacy	DA125BW	Woodlands
12	Gravesend Medical Pharmacy Centre	DA122EN	Riverside
13	Hill Pharmacy	DA119EU	Northfleet North
14	Hobbs Pharmacy	DA49AF	Farningham, Horton Kirby & South Darent
15	Hodgson Pharmacy	DA37QA	Longfield, New Barn & Southfleet
16	Istead Rise Pharmacy	DA139JF	Istead Rise
17	Joydens Wood Pharmacy	DA27NJ	Joydens Wood
18	Kings Pharmacy	DA125HY	Whitehill
19	Lion Pharmacy	DA124TY	Westcourt
20	Lloyds Pharmacy	DA37QD	Longfield, New Barn & Southfleet
21	Lloyds Pharmacy	DA12EU	West Hill
22	Lloyds Pharmacy	DA12HS	Town
23	Lloyds Pharmacy	DA118BZ	Northfleet South
24	Lloyds Pharmacy	DA124NG	Riverview

Medicine use review pharmacies			
ID	Pharmacy Name	Postcode	Ward (2011)
25	Lloyds Pharmacy	TN156HD	Fawkham & West Kingsdown
26	M D Moore Pharmacy	DA13EN	West Hill
27	McQueen's Pharmacy	DA27WX	Joydens Wood
28	Meopham Pharmacy	DA130HP	Meopham North
29	NB Pharmacy Ltd	DA110LJ	Pelham
30	Paydens Ltd	DA11HP	Town
31	Pender Pharmacy	DA122RE	Riverside
32	Penders Chemists	DA118LG	Painters Ash
33	Regent Pharmacy	DA121AS	Central
34	RS Bains	DA125DZ	Singlewell
35	Singlewell Pharmacy	DA117QA	Woodlands
36	Springate & Harrison Ltd	DA11YD	Brent
37	Stone Pharmacy	DA99DF	Stone
38	Swan Valley Pharmacy	DA100BF	Swanscombe
39	Swanley Pharmacy	BR87TQ	Swanley St Mary's
40	Thales Pharmacy	BR88HS	Swanley Christchurch & Swanley Village
41	Vigo Pharmacy	DA130TD	Meopham South & Vigo
42	Village Pharmacy	DA38JB	Ash
43	Village Pharmacy	BR87RB	Hextable
44	Well Dartford	DA12IP	Town
45	Well Swanley	BR87TG	Swanley St Mary's
46	West Hill Pharmacy	DA12EF	West Hill
47	Williams Chemists	DA118BS	Northfleet South
48	Delmergate Ltd	DA15FP	Joyce Green

Pharmacies providing new medicines service



Pharmacies providing new medicines service

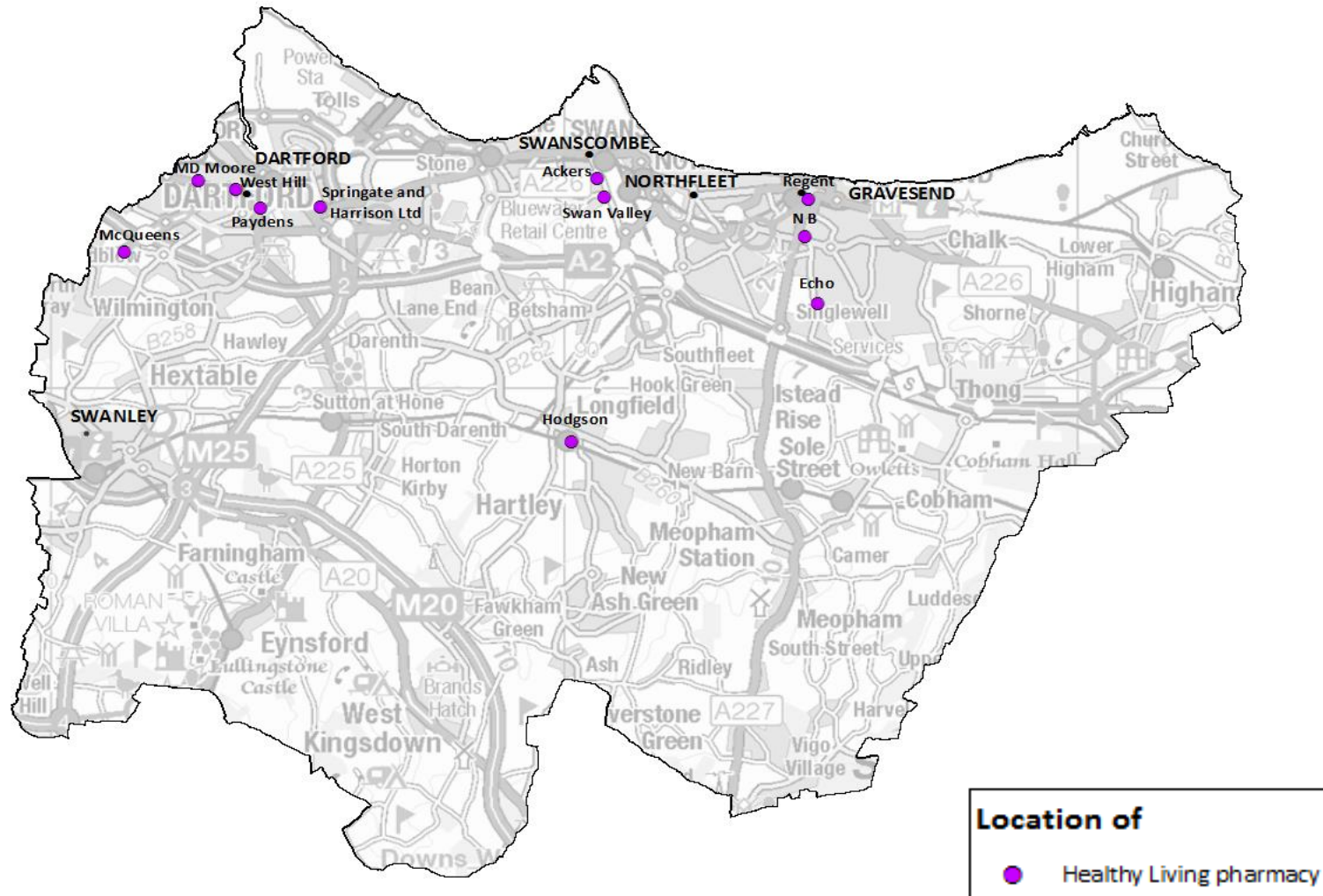
New medicine review				
ID	Pharmacy code	Trading name	Postcode	Ward (2011)
1	FH411	Ackers Chemists	DA100HF	Swanscombe
2	FEL35	Asda Pharmacy	DA99BT	Stone
3	FM106	Asda Pharmacy	BR87UN	Swanley White Oak
4	FN522	Boots	DA11DE	Town
5	FDF72	Boots	DA99SJ	Stone
6	FHY96	Boots	DA110TA	Pelham
7	FKV58	Boots	BR87TL	Swanley St Mary's
8	FQY90	Chadwicks Chemist	DA117HW	Coldharbour
9	FHT34	Darnley Pharmacy	DA110HN	Pelham
10	FQ897	Echo Pharmacy	DA125BW	Woodlands
11	FLJ66	Gravesend Medical Pharmacy Centre	DA122EN	Riverside
12	FHV64	Hill Pharmacy	DA119EU	Northfleet North
13	FWR04	Hobbs Pharmacy	DA49AF	Farningham, Horton Kirby & South Darenth
14	FA519	Hodgson Pharmacy	DA37QA	Longfield, New Barn & Southfleet
15	FEH10	Istead Rise Pharmacy	DA139JF	Istead Rise
16	FH758	Kings Pharmacy	DA125HY	Whitehill
17	FHA64	Lion Pharmacy	DA124TY	Westcourt
18	FG447	Lloyds Pharmacy	DA37QD	Longfield, New Barn & Southfleet
19	FCJ14	Lloyds Pharmacy	DA12EU	West Hill
20	FP204	Lloyds Pharmacy	DA12HS	Town
21	FTW73	Lloyds Pharmacy	DA118BZ	Northfleet South
22	FK412	Lloyds Pharmacy	DA124NG	Riverview

New medicine review				
ID	Pharmacy code	Trading name	Postcode	Ward (2011)
23	FAV48	Lloyds Pharmacy	TN156HD	Fawkham & West Kingsdown
24	FNX28	M D Moore Pharmacy	DA13EN	West Hill
25	FQ405	McQueen's Pharmacy	DA27WX	Joydens Wood
26	FW564	Meopham Pharmacy	DA130HP	Meopham North
27	FX082	Paydens Ltd	DA11HP	Town
28	FPC66	Penders Chemists	DA118LG	Painters Ash
29	FRK37	Regent Pharmacy	DA121AS	Central
30	FY771	RS Bains	DA125DZ	Singlewell
31	FA066	Singlewell Pharmacy	DA117QA	Woodlands
32	FN266	Springate & Harrison Ltd	DA11YD	Brent
33	FY992	Stone Pharmacy	DA99DF	Stone
34	FH692	Swan Valley Pharmacy	DA100BF	Swanscombe
35	FF547	Swanley Pharmacy	BR87TQ	Swanley St Mary's
36	FPW21	Vigo Pharmacy	DA130TD	Meopham South & Vigo
37	FX677	Village Pharmacy	DA38JB	Ash
38	FKD21	Village Pharmacy	BR87RB	Hextable
39	FM185	Well Dartford	DA12JP	Town
40	FL923	Well Swanley	BR87TG	Swanley St Mary's
41	FWL74	West Hill Pharmacy	DA12EF	West Hill
42	FC312	Williams Chemists	DA118BS	Northfleet South
43	FN593	Delmergate Ltd	DA15FP	Joyce Green

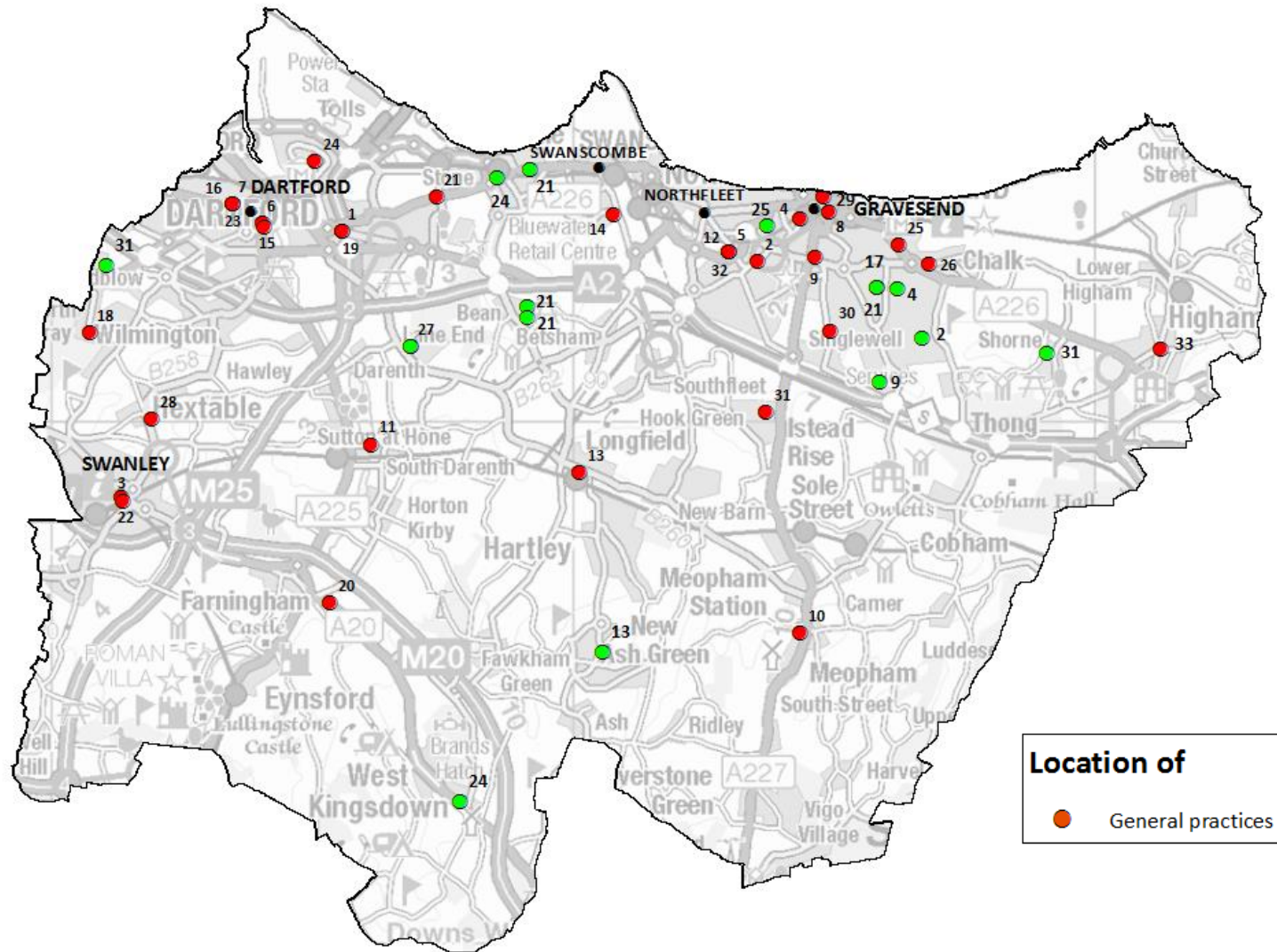
KENT PUBLIC HEALTH
OBSERVATORY



Healthy Living pharmacies



General practices



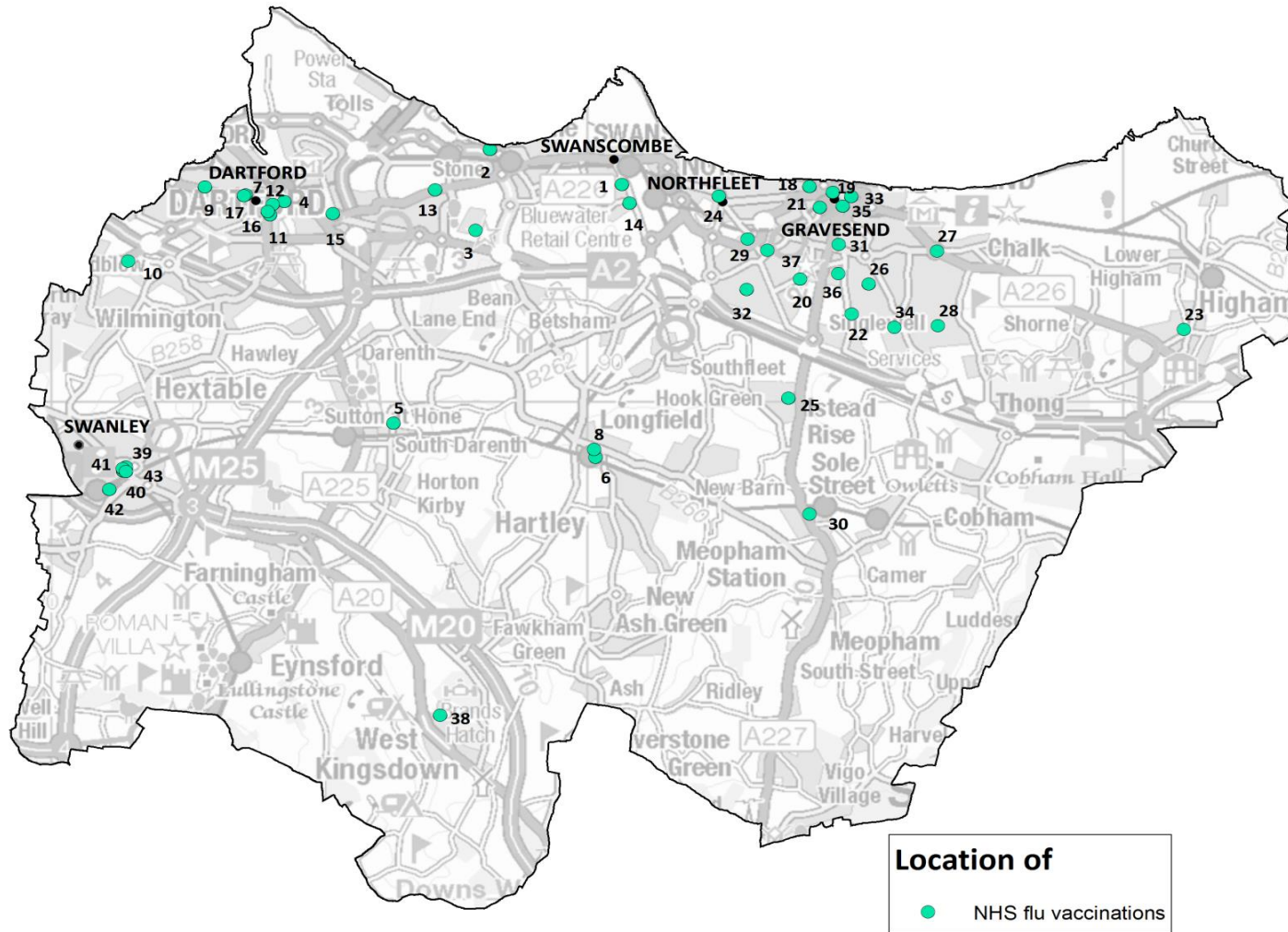
General practices

General practices - Main				
Key	Practice Code	Practice Name	Postcode	Ward (2011)
1	G82006	Dartford East Health Centre	DA11QY	Brent
2	G82021	The Shrubbery	DA118RD	Coldharbour
3	G82028	The Cedars Surgery	BR87AH	Swanley St Mary's
4	G82032	Pelham Medical Practice	DA110HN	Pelham
5	G82044	The Gateway Medical Practice	DA118BZ	Northfleet South
6	G82048	Horsman's Place Surgery	DA12JP	Town
7	G82056	The Orchard Practice	DA12HA	West Hill
8	G82062	Parrock Street	DA121EN	Central
9	G82067	Old Road West	DA110LL	Pelham
10	G82073	Meopham Medical Centre	DA130AH	Meopham North
11	G82088	Devon Road Surgery	DA49AB	Sutton-at-Hone & Hawley
12	G82096	The Forge Surgery	DA118BZ	Northfleet South
13	G82097	Jubilee Medical Group	DA37QD	Longfield, New Barn & Southfleet
14	G82122	Swanscombe Health	DA100BF	Swanscombe
15	G82143	Lowfield Medical Centre	DA11HP	Town
16	G82185	Redwood Practice	DA12HA	West Hill

General practices - Main				
Key	Practice Code	Practice Name	Postcode	Ward (2011)
17	G82197	Lamorna Surgery	DA125PZ	Whitehill
18	G82206	Summerhouse Drive	DA52ER	Joydens Wood
19	G82212	Pilgrims Way Surgery	DA11QY	Brent
20	G82218	Braeside Surgery	DA40JU	Farningham, Horton Kirby & South Darenth
21	G82221	Elmdene	DA99DB	Stone
22	G82225	The Oaks	BR87UP	Swanley St Mary's
23	G82639	Maple Practice	DA12HA	West Hill
24	G82647	Temple Hill Surgery	DA15ND	Joyce Green
25	G82648	Rochester Rd Gravesend	DA122HU	Riverside
26	G82690	Chalk Surgery	DA122NG	Chalk
27	G82710	Bennett Way Surgery	DA27JT	Bean & Darenth
28	G82722	Main Road Hextable	BR87RB	Hextable
29	G82780	Gravesend Medical Centre	DA122EN	Riverside
30	G82808	Oakfields Health Centre	DA125BW	Woodlands
31	G82809	Downs Way Medical Practice	DA139LB	Istead Rise
32	Y02826	White Horse Surgery	DA118BZ	Northfleet South
33	G82100	Highcliffe Medical Practice (part of Medway CCG)	ME37DB	Higham

General practices - Branch				
Key	Practice Code	Practice Name	Postcode	Ward (2011)
2	G82021	The Shrubbery	DA124RX	Riverview
4	G82032	Pelham Medical Practice	DA124W	Westcourt
9	G82067	Old Road West	DA125TY	Singlewell
13	G82097	Jubilee Medical Group	DA38RH	Ash
21	G82221	Horns Cross & Bean	DA28BG	Bean & Darenth
21	G82122	Swanscombe Health	DA28BS	Bean & Darenth
21	G82122	Swanscombe Health	DA125PZ	Whitehill
21	G82122	Swanscombe Health	DA99EJ	Greenhithe
24	G82647	West Kingsdown Surgery	TN156EJ	Fawkham & West Kingsdown
24	G82647	Ivy Bower Surgery	DA99NF	Greenhithe
25	G82648	Rochester Road	DA119NY	Northfleet North
27	G82710	Bennett Way Surgery	DA27JT	Bean & Darenth
31	G82809	Downs Way Medical Practice	DA123DY	Shorne, Cobham & Luddesdown
31	G82809	Downs Way Medical Practice	DA52AE	Joydens Wood

NHS flu vaccination



NHS flu vaccination

NHS flu vaccinations			
Key	Pharmacy Name	Postcode	Ward (2011)
1	Ackers Chemists Ltd	DA100HF	Swanscombe
2	Asda Stores Ltd	DA99BT	Stone
3	Boots UK Ltd	DA99SJ	Stone
4	Boots UK Ltd	DA11DE	Town
5	Butt and Hobbs Ltd	DA49AF	Farningham, Horton Kirby & South Darenth
6	Hodgson Pharmacy Ltd	DA37QA	Longfield, New Barn & Southfleet
7	Lloyds Pharmacy Ltd	DA12EU	West Hill
8	Lloyds Pharmacy Ltd	DA37QD	Longfield, New Barn & Southfleet
9	Kanani Pharmacy Ltd	DA13EN	West Hill
10	McQueen's Group LLP	DA27WX	Joydens Wood
11	Paydens Ltd	DA11HP	Town
12	Lloyds Pharmacy Ltd	DA12HS	Town
13	J M Patel Ltd	DA99DF	Stone
14	Ackers Chemists Ltd	DA100BF	Swanscombe
15	Ackers Chemists Ltd	DA11YD	Brent
16	Bestway National Chemists Ltd	DA12JP	Town
17	Paydens Ltd	DA12EF	West Hill
18	Asda Stores Ltd	DA110DQ	Pelham
19	Boots UK Ltd	DA110TA	Pelham
20	Badiani & Co Ltd	DA117HW	Coldharbour
21	Paydens Ltd	DA110HN	Pelham
22	K K Leung	DA125BW	Woodlands

NHS flu vaccinations			
Key	Pharmacy Name	Postcode	Ward (2011)
23	Lawsat Pharm Ltd	ME37AT	Higham
24	Ran Pharma Ltd	DA119EU	Northfleet North
25	Badiani & Co Ltd	DA139JF	Istead Rise
26	Janris Ltd	DA125HY	Whitehill
27	Harshraj Ltd	DA124TY	Westcourt
28	Lloyds Pharmacy Ltd	DA124NG	Riverview
29	Lloyds Pharmacy Ltd	DA118BZ	Northfleet South
30	Badiani & Co Ltd	DA130HP	Meopham North
31	N B Pharmacy Ltd	DA110LJ	Pelham
32	Badiani & Co Ltd	DA118LG	Painters Ash
33	Pender Pharmacy Ltd	DA122RE	Riverside
34	R S Bains Ltd	DA125DZ	Singlewell
35	Regent Pharmacies Ltd	DA121AS	Central
36	Singlewell Pharmacy Ltd	DA117QA	Woodlands
37	Badiani & Co Ltd	DA118BS	Northfleet South
38	Lloyds Pharmacy Ltd	TN156HD	Fawkham & West Kingsdown
39	Asda Pharmacy Ltd	BR87UN	Swanley White Oak
40	Boots UK Ltd	BR87TL	Swanley St Mary's
41	Wellbrooke Products Ltd	BR87TQ	Swanley St Mary's
42	Inngate Ltd	BR88HS	Swanley Christchurch & Swanley Village
43	Bestway National Chemists Ltd	BR87TG	Swanley St Mary's



Orientation maps

- Source: Base layer available on ArcGIS



Population maps and information

- Sources Office for National Statistics (ONS), 2014 based forecasts used for population projections. All other populations are based on 2016 mid-year estimates (MYE)



Ethnicity profiles

- Source: Census 2011 via National Online Manpower Information System (NOMIS)



Index of multiple deprivation

- Source: Department for Communities & Local Government, shows a relative deprivation score



Pharmaceutical services

- Source: NHS England, data collected for 2016/17 (April 16 to February 17), Healthy Living Pharmacies data collected from KCC (2017)



General practices

- Source: Primary Care Information System (PCIS), correct as of November 2016