

Pharmaceutical Needs Assessment

Eastern and Coastal Kent Overview

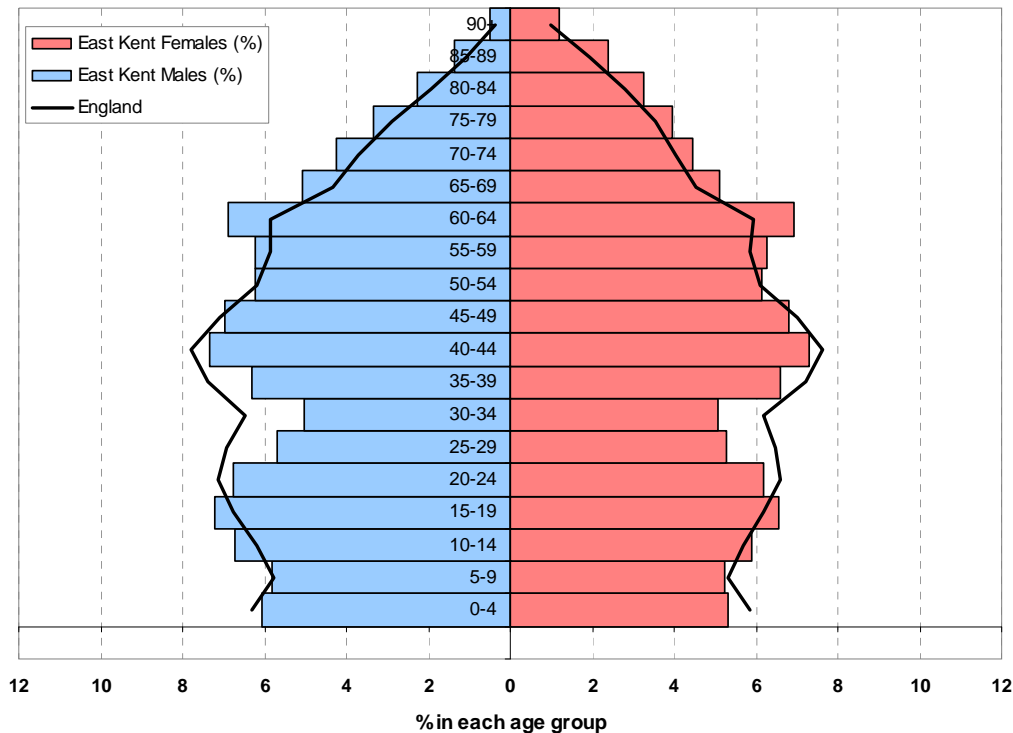
Mid-year population estimates for Eastern and Coastal Kent, 2008, rounded

Age band	Males	Females	Total
0-4	21,500	20,000	41,500
5-9	20,600	19,800	40,400
10-14	23,900	22,300	46,200
15-19	25,600	24,800	50,400
20-24	24,000	23,300	47,300
25-29	20,200	19,900	40,100
30-34	17,800	19,200	37,000
35-39	22,400	24,900	47,300
40-44	26,100	27,600	53,700
45-49	24,700	25,600	50,300
50-54	22,100	23,200	45,300
55-59	22,100	23,600	45,700
60-64	24,500	26,200	50,700
65-69	18,000	19,300	37,300
70-74	15,100	16,800	31,900
75-79	11,800	15,000	26,800
80-84	8,000	12,300	20,300
85-89	4,800	9,000	13,800
90+	1,700	4,500	6,200
All Ages	354,900	377,300	732,200

Source: ONS

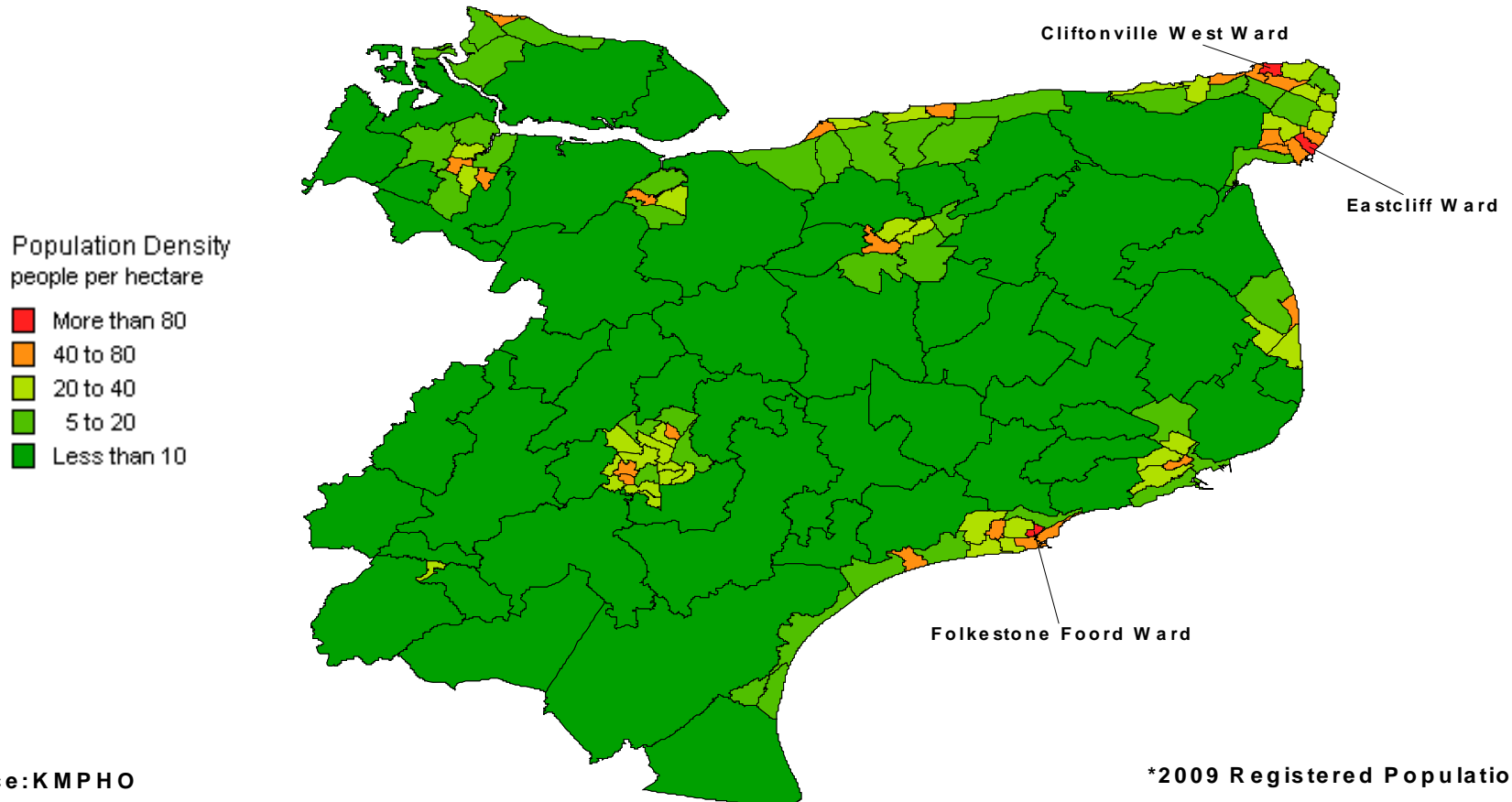
Mid-2008 Population Estimates for Eastern and Coastal Kent

Source: ONS Mid-2008 Population Estimates (Rounded)



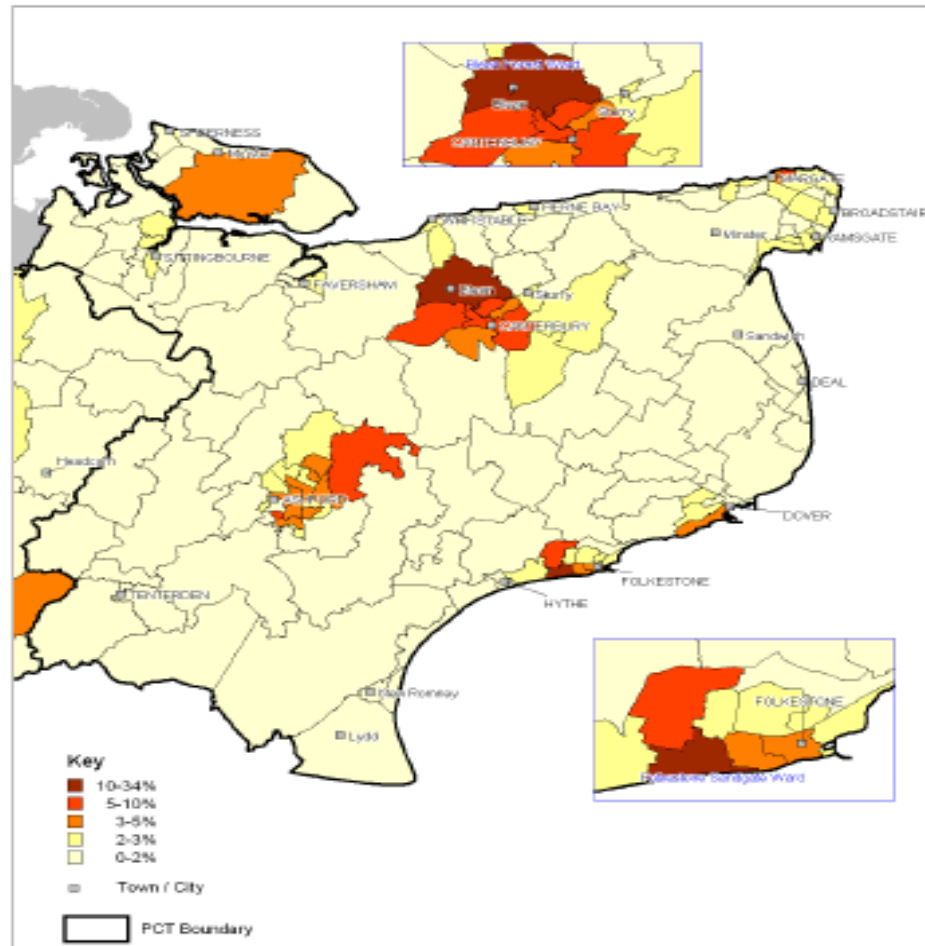
Population Density

Population* Density Map of Electoral Wards in Eastern and Coastal Kent Area



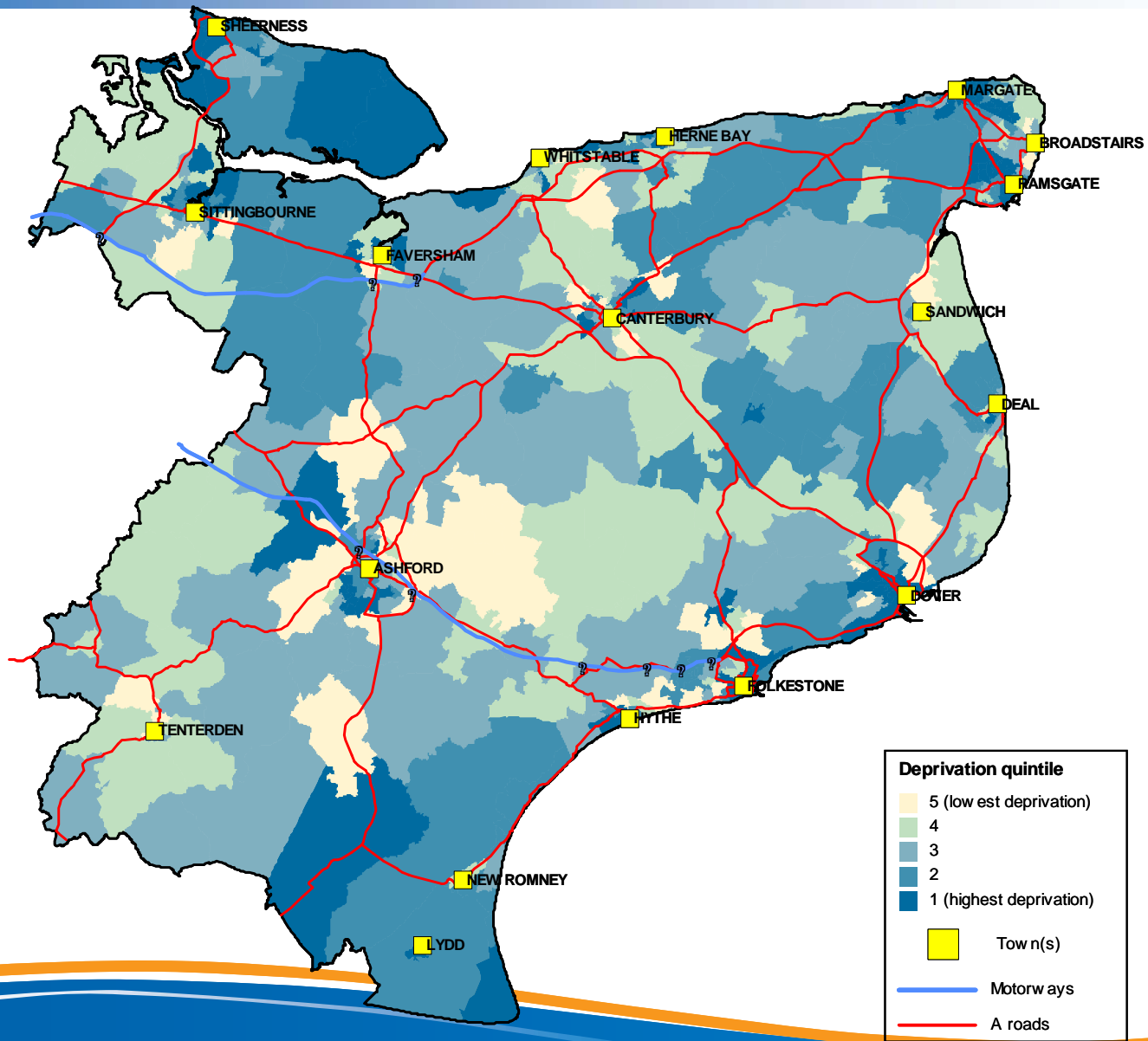
Source:KMPHO

Population in Black or Ethnic Minority Groups in Eastern & Coastal Kent PCT Electoral Wards, 2001

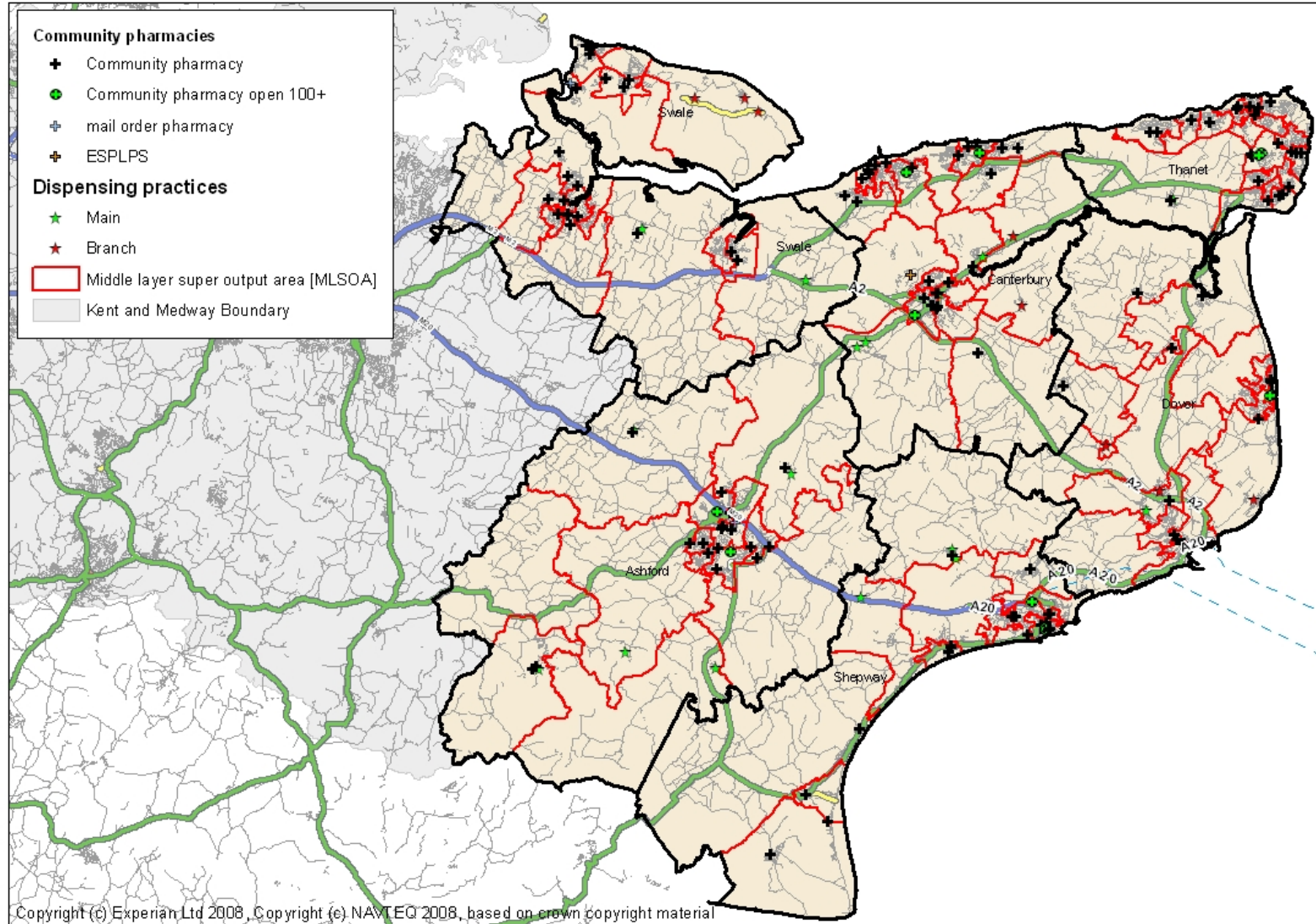


Source: Census 2001, Table KS06

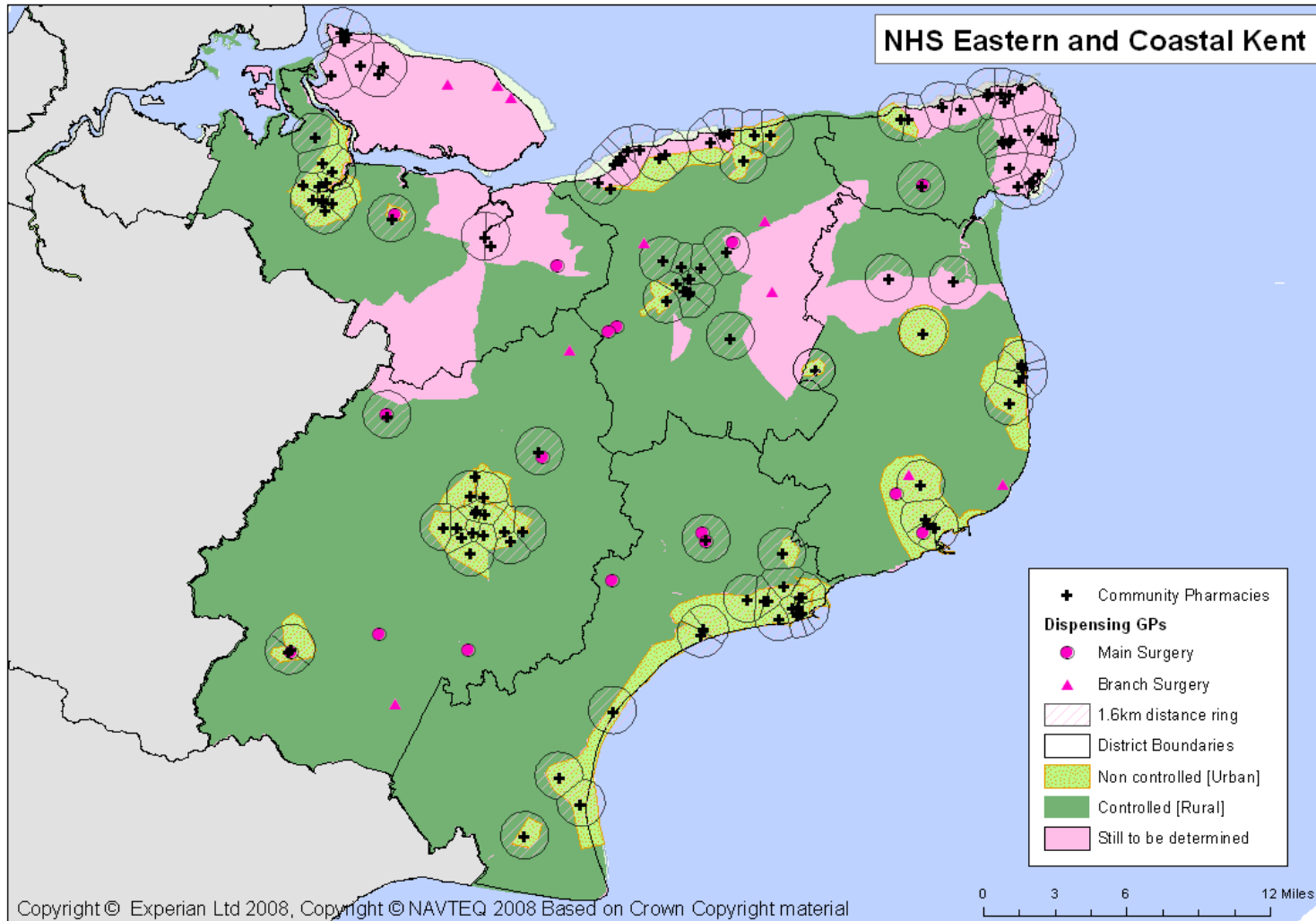
Deprivation



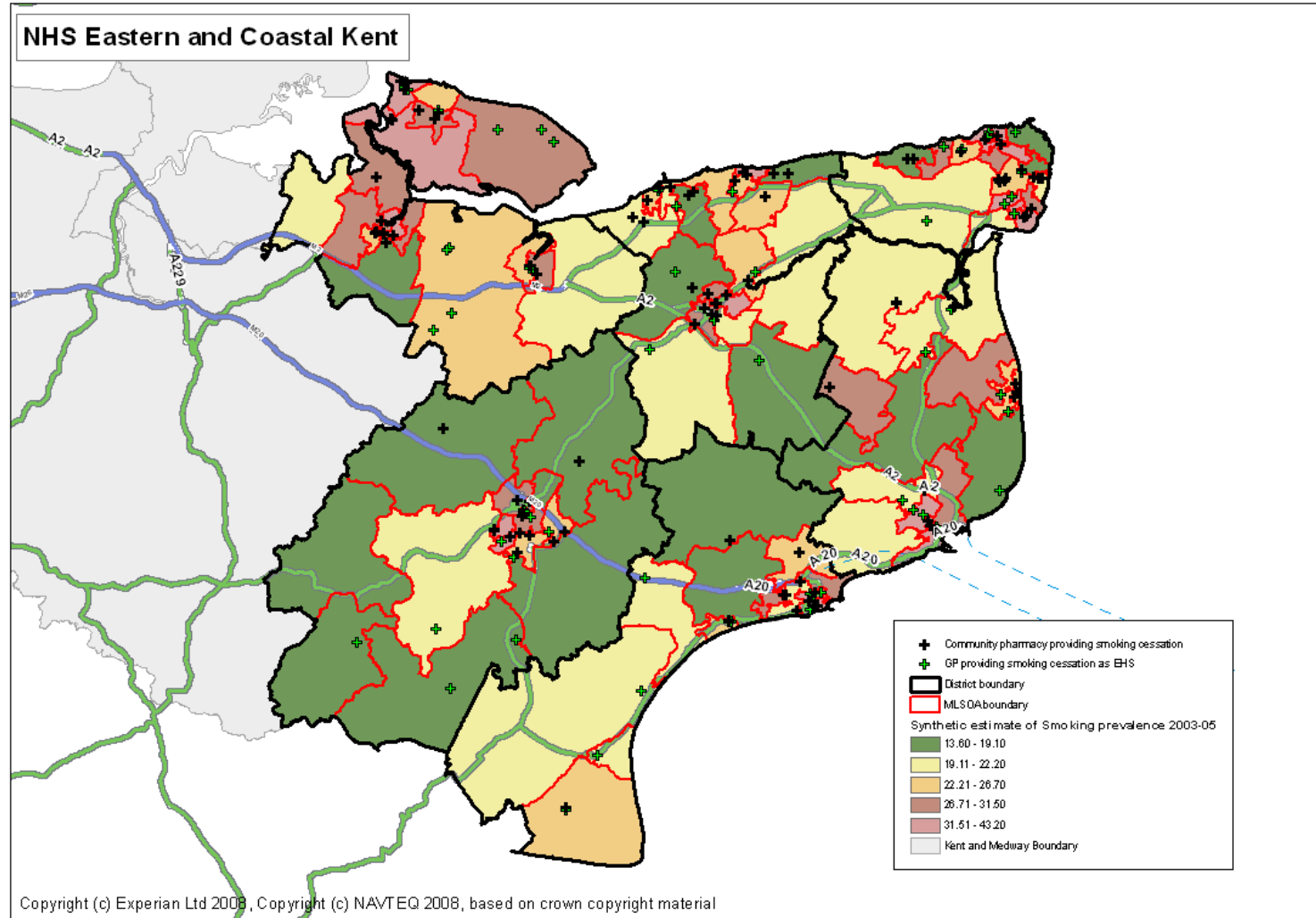
Location of Pharmaceutical Services



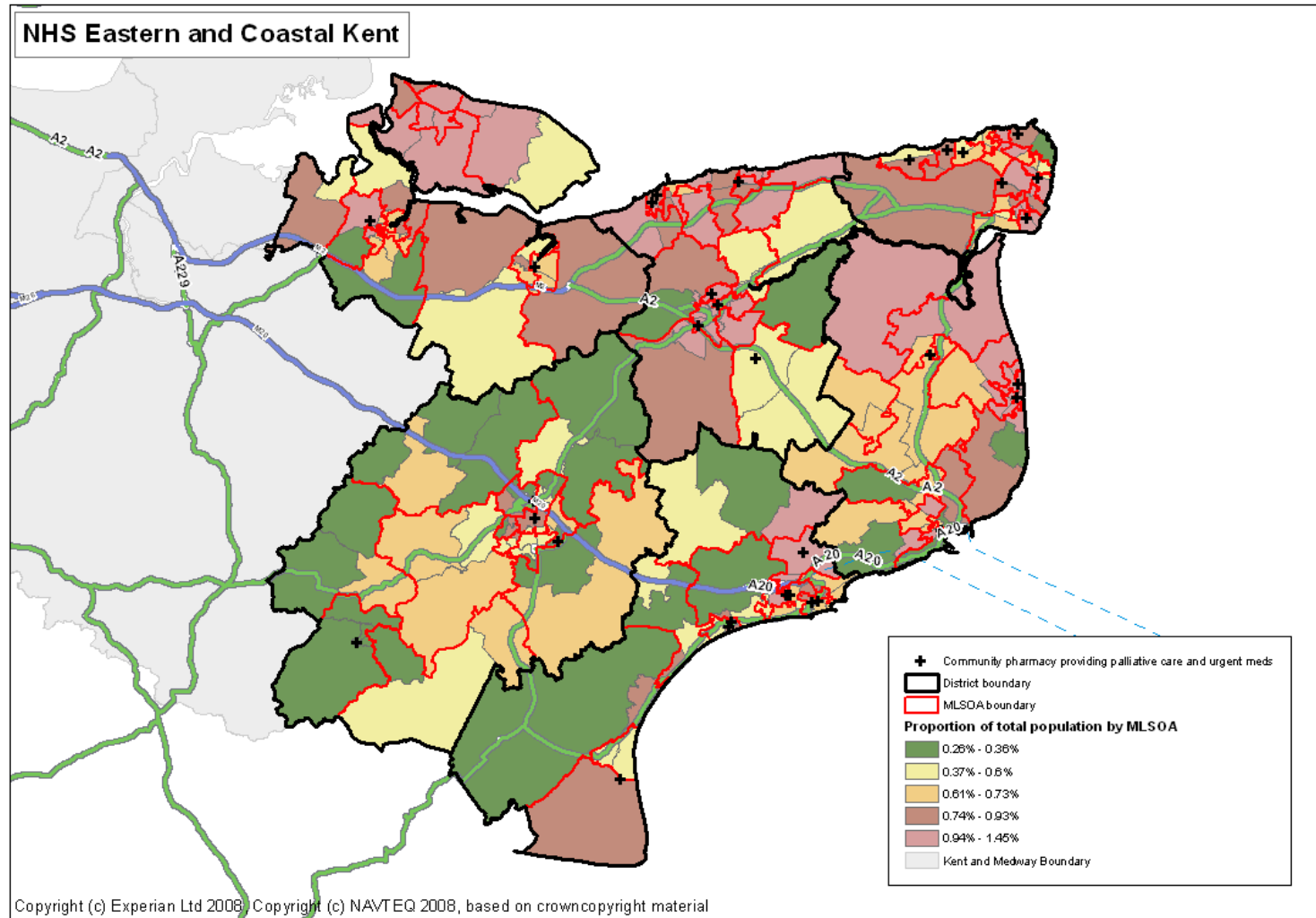
Eastern and Coastal Kent Controlled Localities



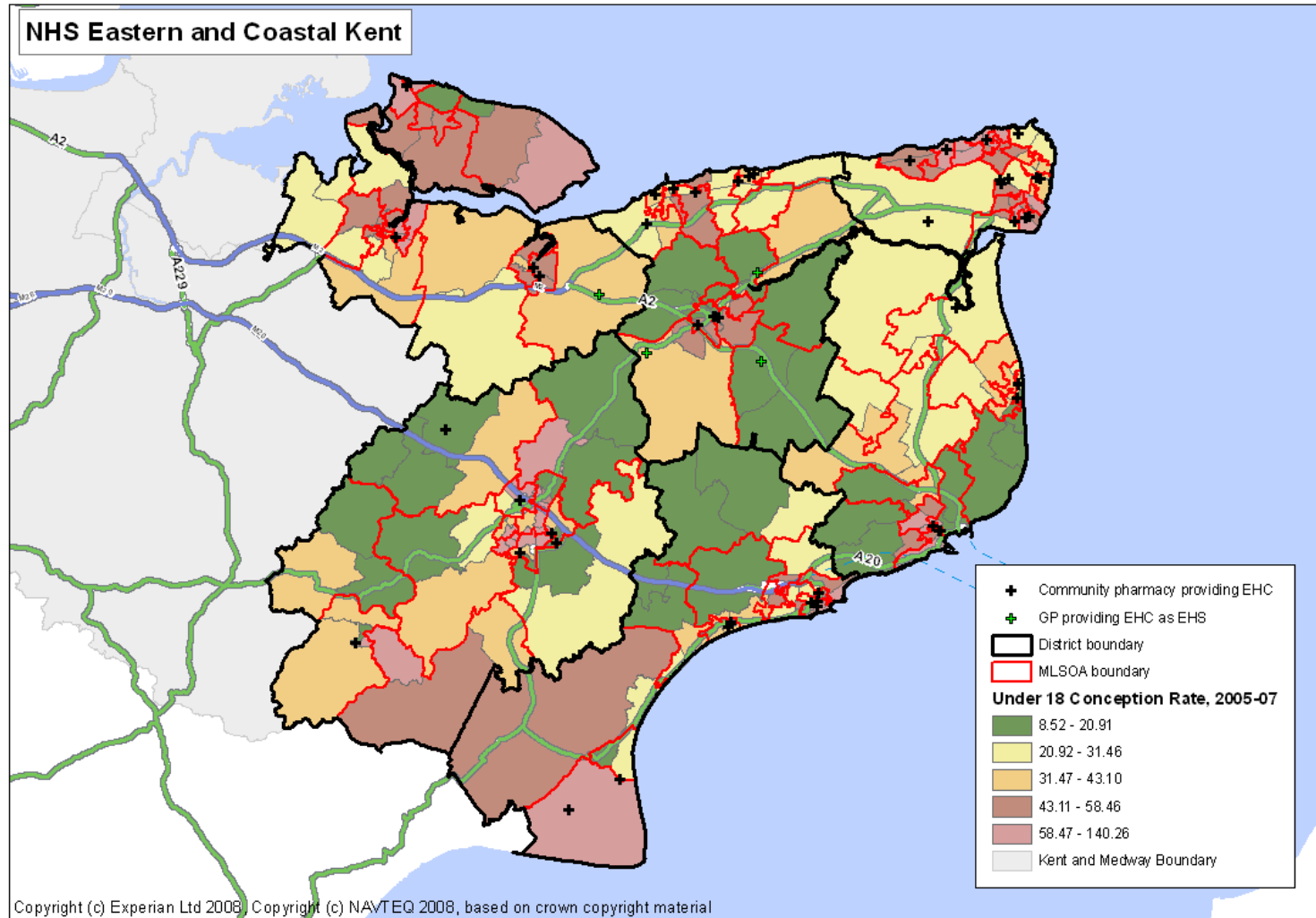
Provision of Smoking Cessation and Nicotine Replacement Therapy



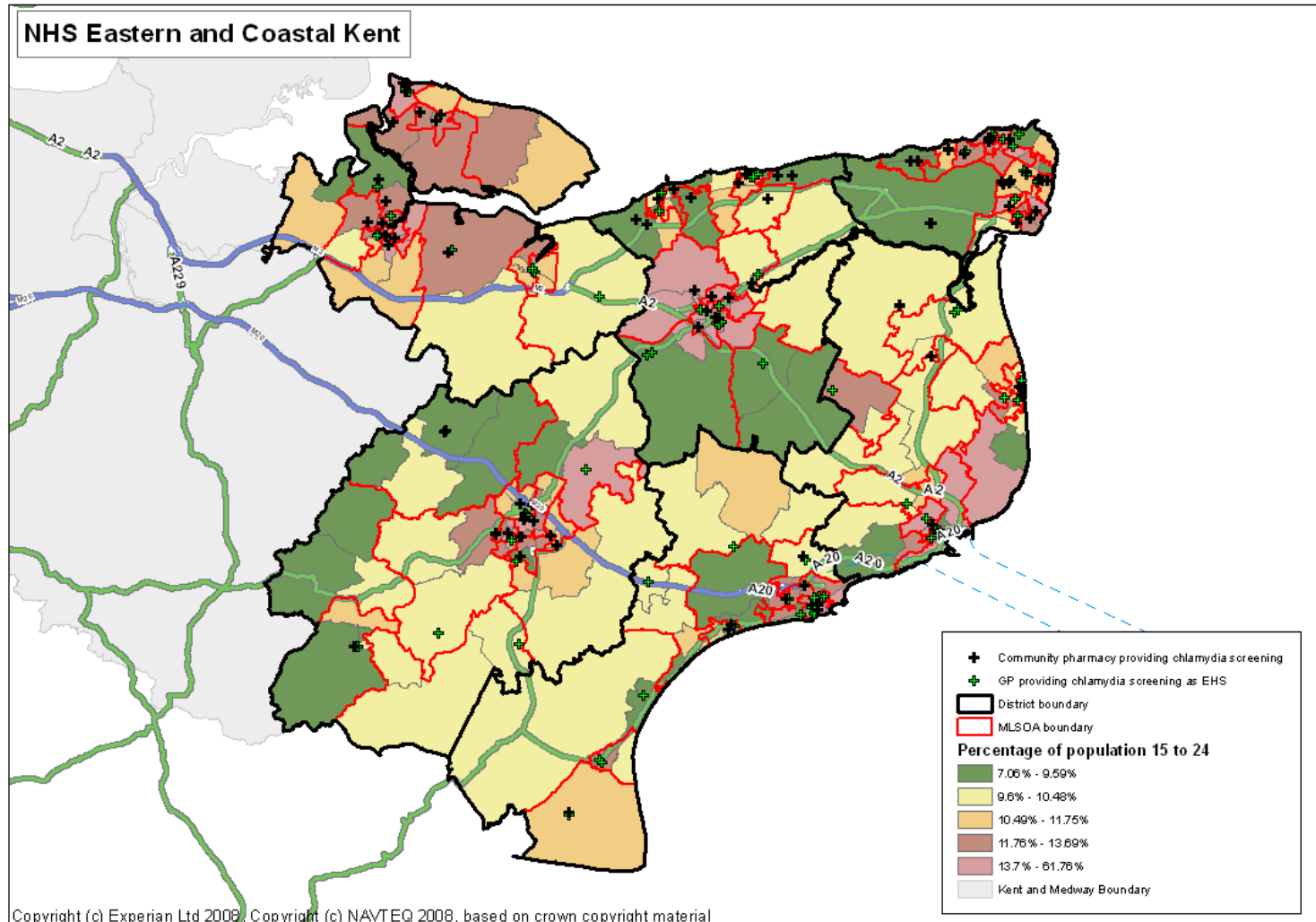
Provision of Palliative Care / Urgent Medicines



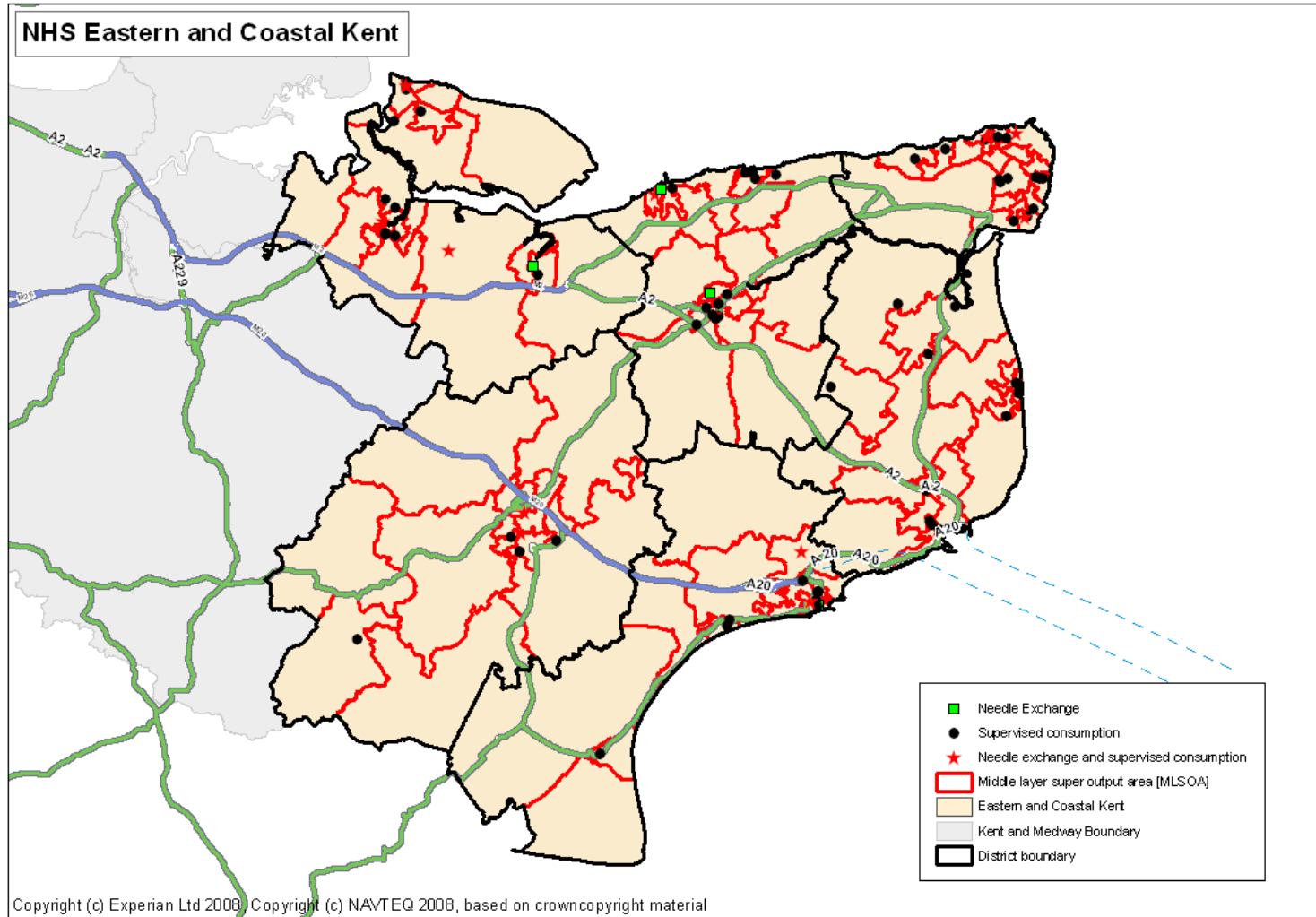
Provision of Emergency Hormonal Contraception



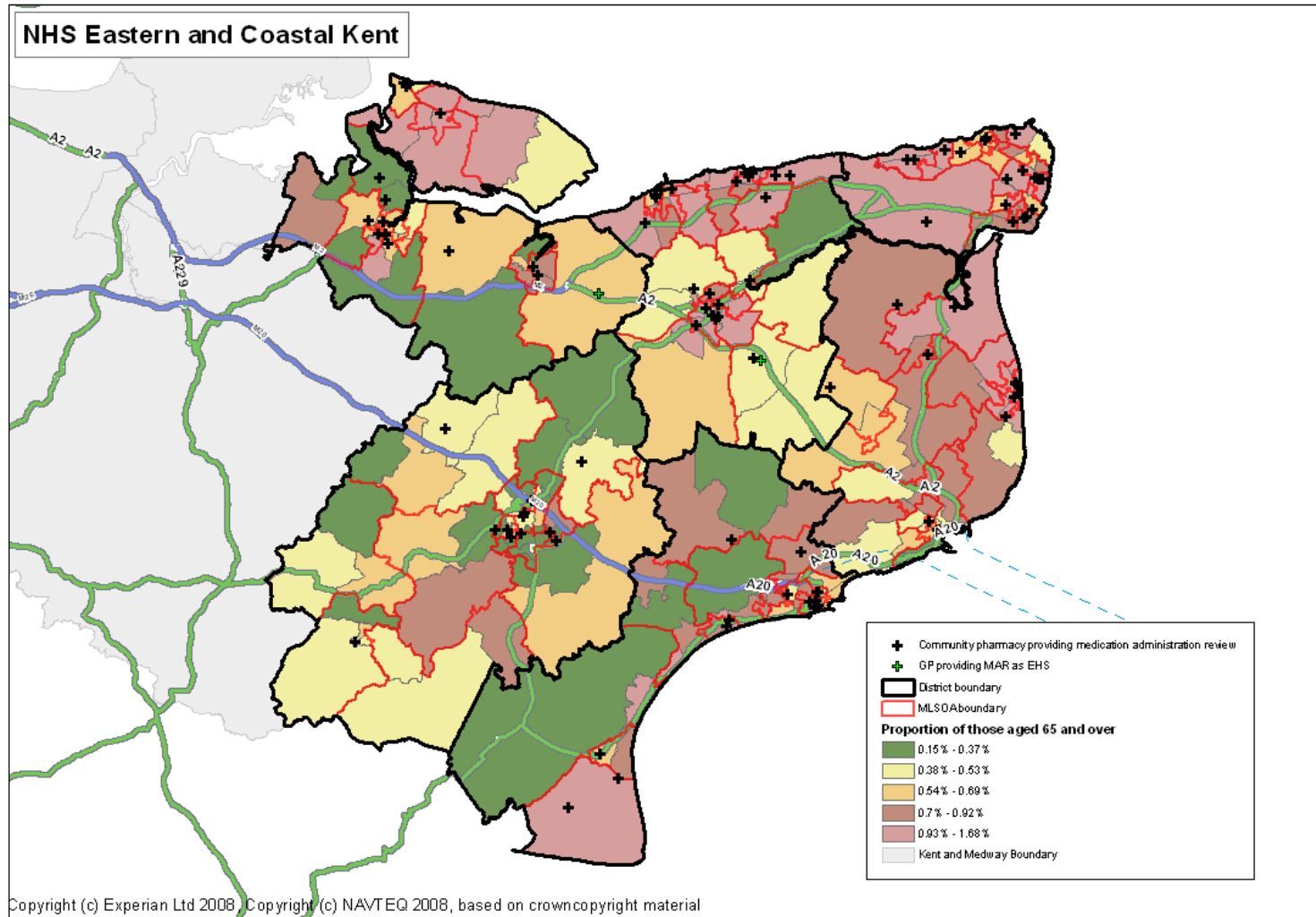
Provision of Chlamydia Testing



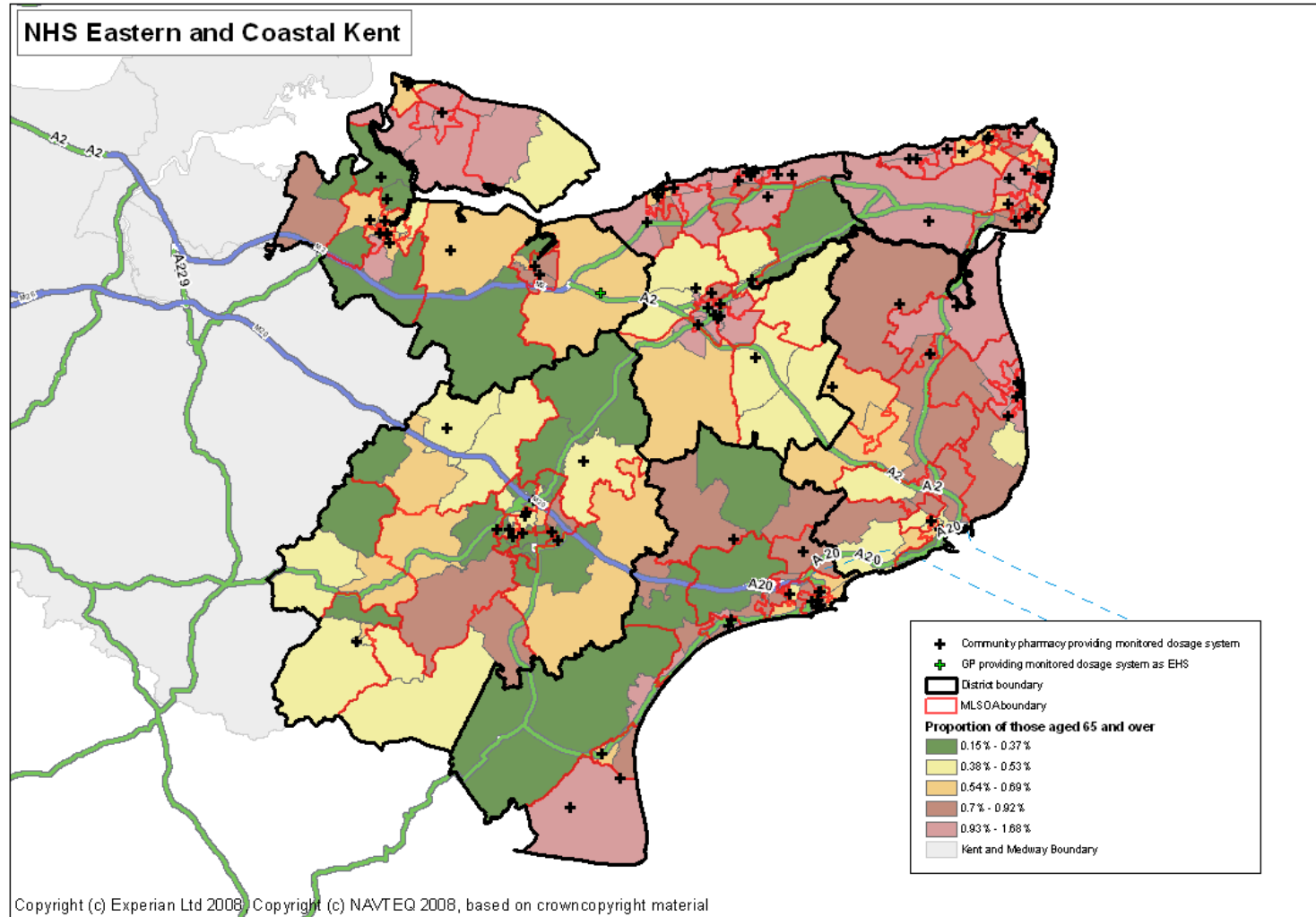
Needle Exchange and Supervised Consumption



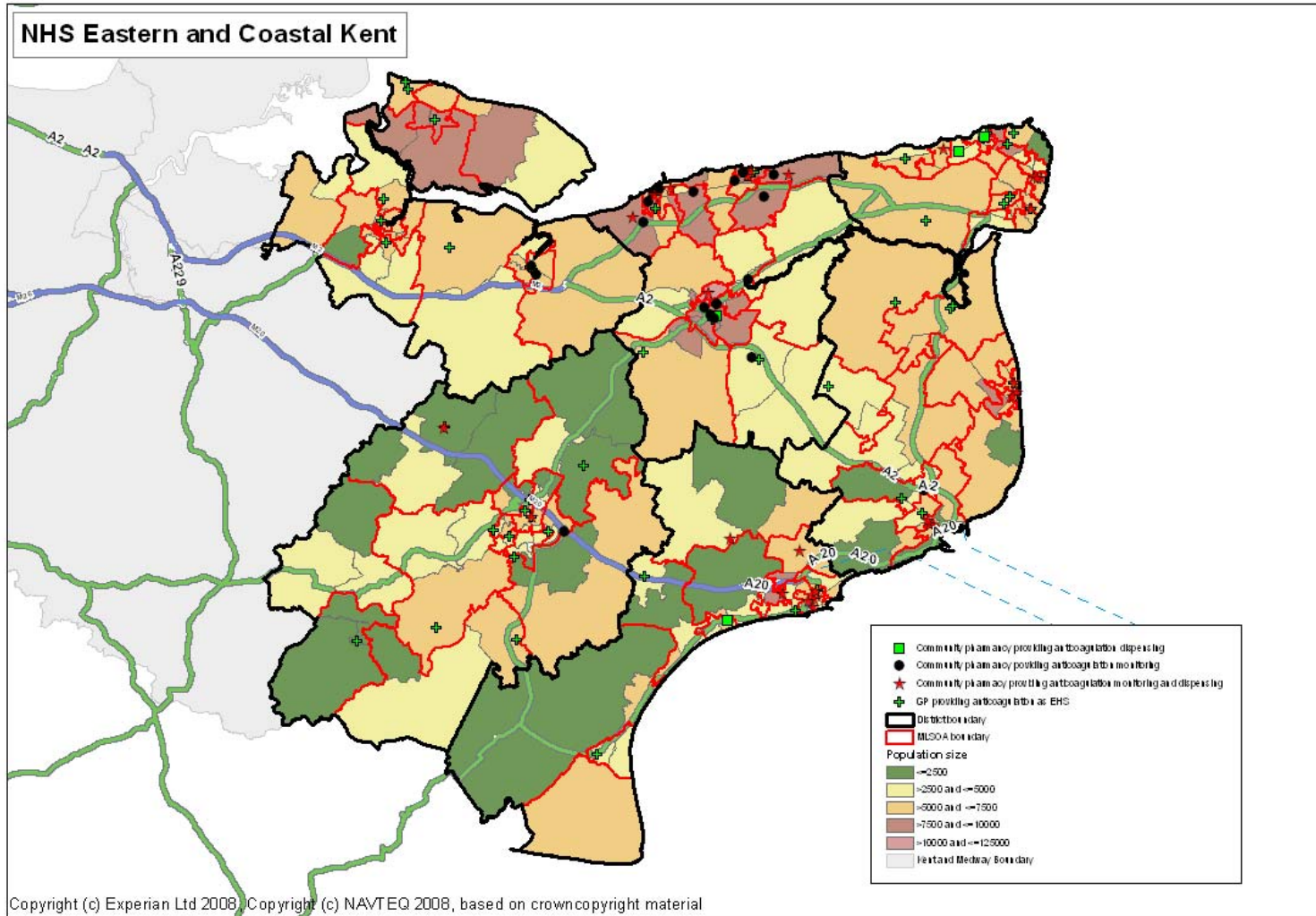
Medication Administration Review



Monitored Dosage Systems



Anticoagulant Monitoring and Dispensing



Weight Management Programme

