

Pharmaceutical Needs Assessment – NHS Ashford CCG

Supplementary data and maps
data correct as of March 2018

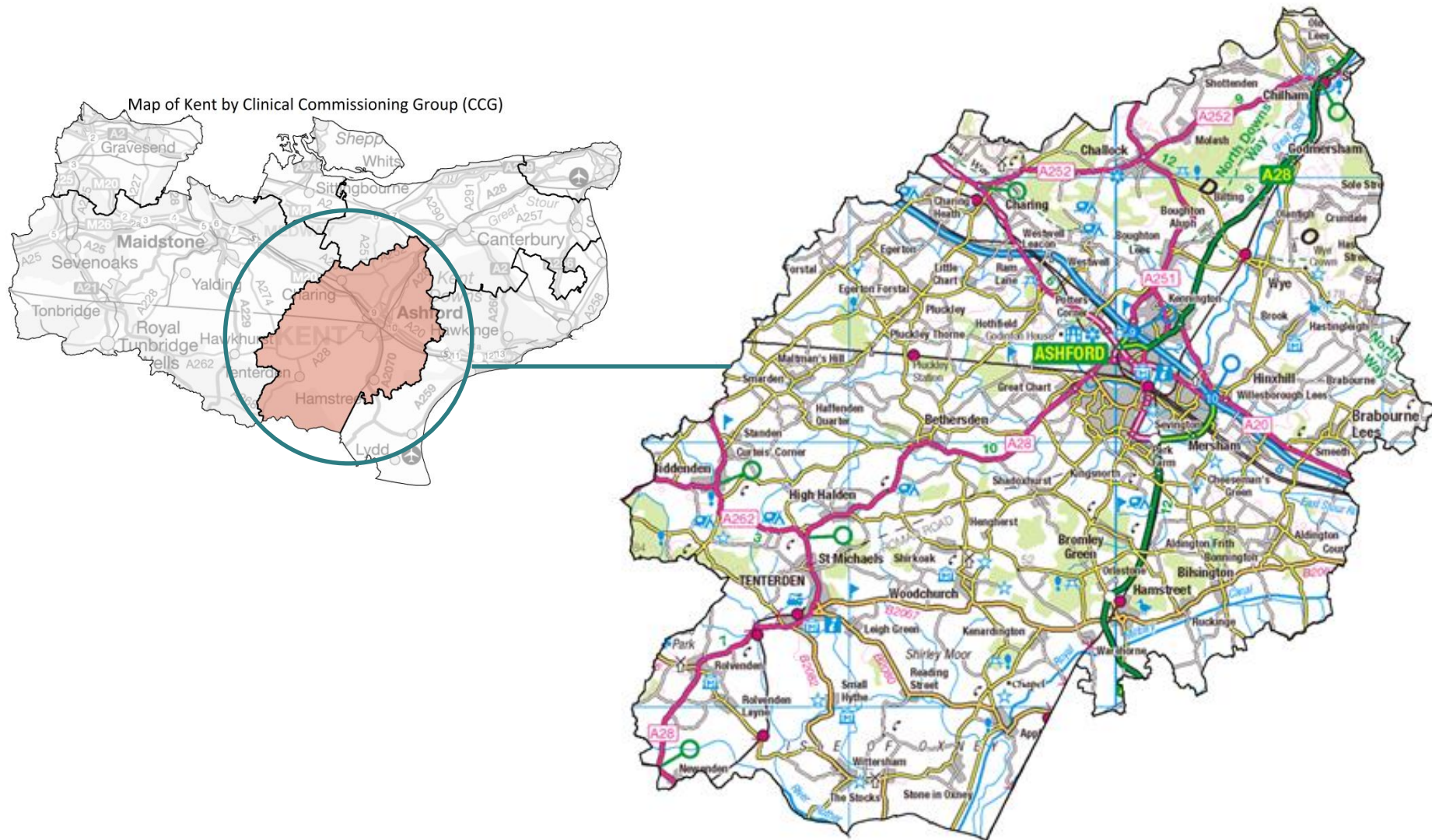
Produced by

Cheryl Clennett, Consultant Pharmacist
Julian Barlow, Senior Public Health Intelligence Analyst
Matthew Pateman, Public Health Analyst
Lauren Liddell-Young, Public Health Information Officer

Final version
Last updated: March 2018

- [Orientation](#)
- [Current population](#)
- [Population density](#)
- [Population growth](#)
- [Ethnicity profile](#)
- [Index of multiple deprivation](#)
- [Location of pharmaceutical services](#)
- [Distance rings around community pharmacies](#)
- [Pharmacies providing medicines use review](#)
- [Pharmacies providing new medicines service](#)
- [Pharmacies and appliance contractors providing stoma customisation and appliance use reviews](#)
- [Healthy Living pharmacies](#)
- [General practices](#)
- [NHS flu vaccination](#)

Orientation – Ashford CCG



Current population

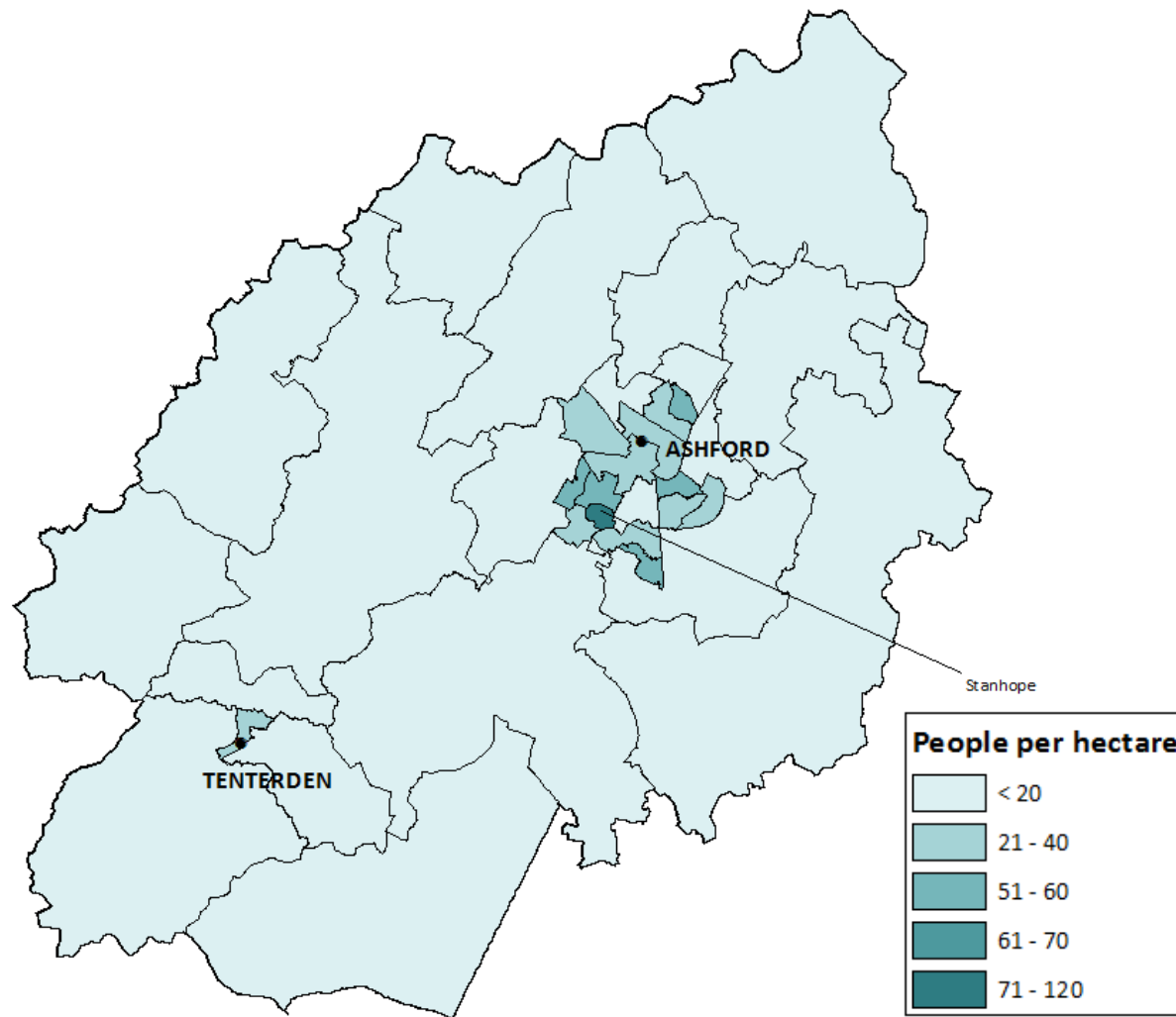
2016 resident population in Ashford CCG compared to Kent



Mid-year estimates for 2016: Ashford CCG			
Age band	Female	Male	Persons
0-4	3,905	4,131	8,036
05-09	4,199	4,191	8,390
10-14	3,831	4,049	7,880
15-19	3,777	3,715	7,492
20-24	3,147	3,351	6,498
25-29	3,782	3,542	7,324
30-34	3,928	3,392	7,320
35-39	3,937	3,473	7,410
40-44	4,199	3,891	8,090
45-49	4,955	4,748	9,703
50-54	4,758	4,771	9,529
55-59	3,835	3,869	7,704
60-64	3,435	3,277	6,712
65-69	3,987	3,680	7,667
70-74	3,205	2,893	6,098
75-79	2,234	1,944	4,178
80-84	1,712	1,312	3,024
85-89	1,156	738	1,894
90	835	367	1,202
All ages	64,817	61,334	126,151

Source: ONS, prepared by KPHO (LLY), 02/18

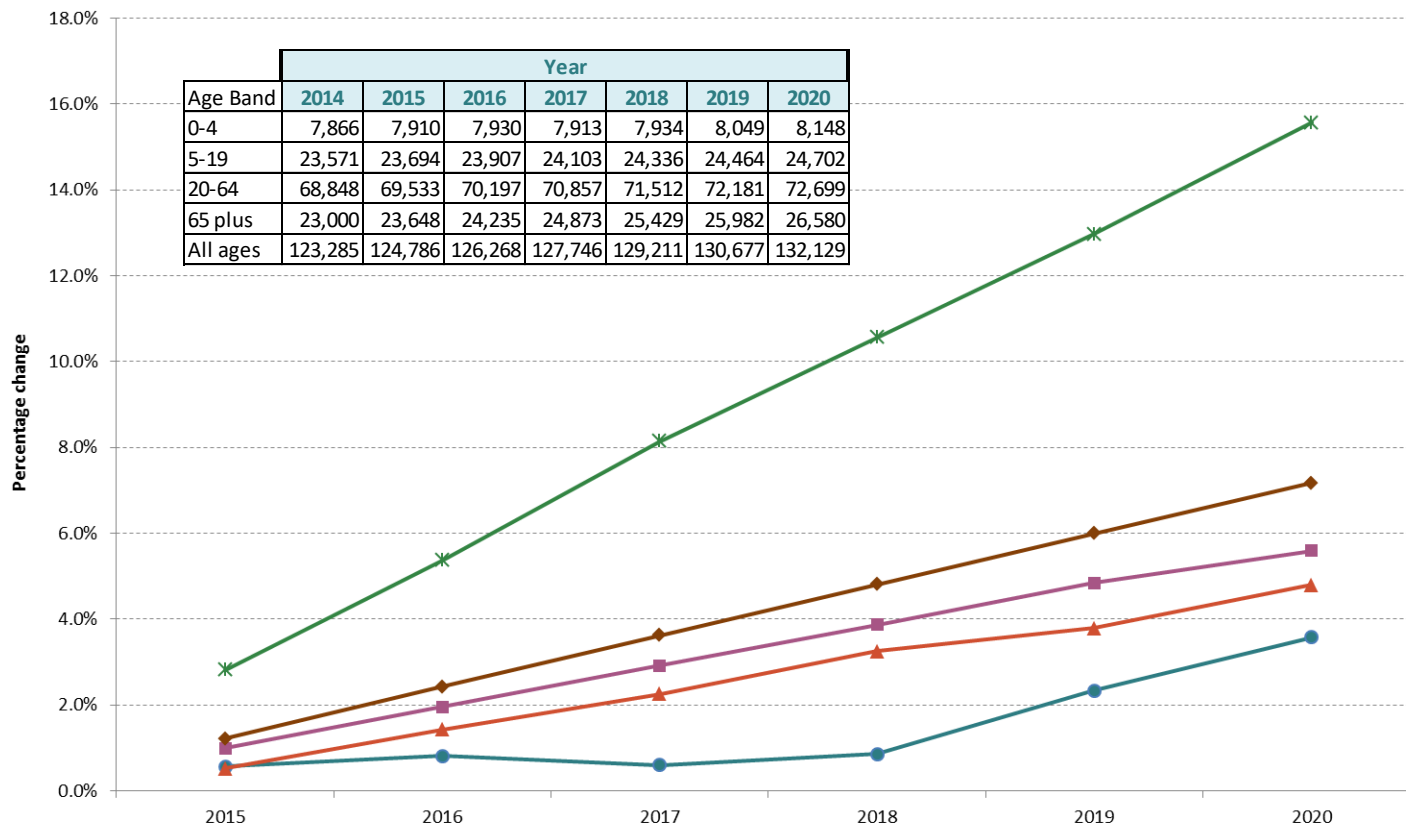
Population density (2015, by ward)



Population growth

Population growth: Ashford CCG for 2015 to 2020 from 2014

0-4 5-19 20-64 65 plus All ages



The chart shows the percentage growth of Ashford CCG's projected population from 2015 to 2020.

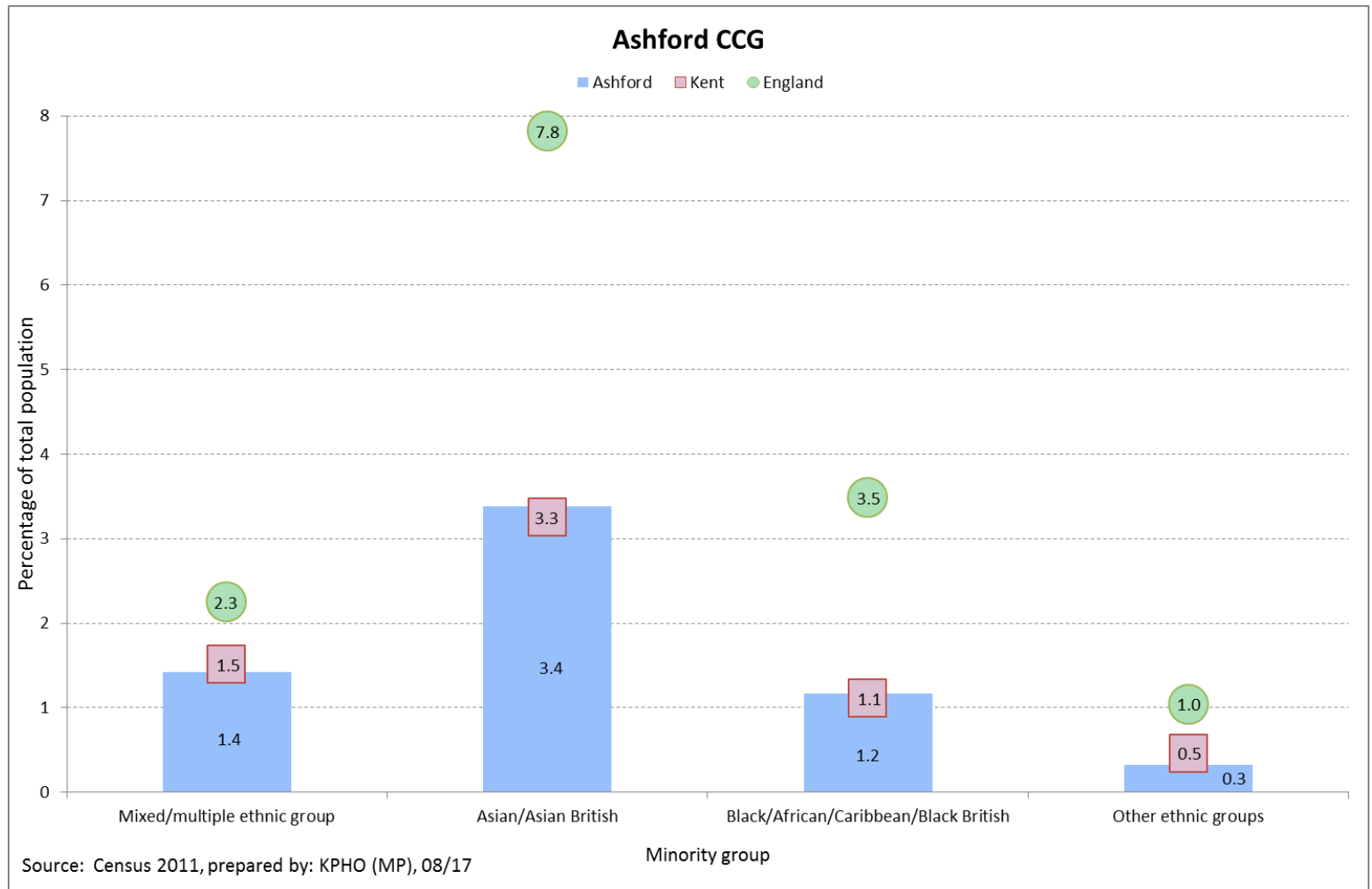
This uses a baseline of 2014 population to calculate the percentage growth and is split into different age-bandings.

The table provides the total number of the different age-bandings for the baseline population (2014) and the projected population from 2015 to 2020.

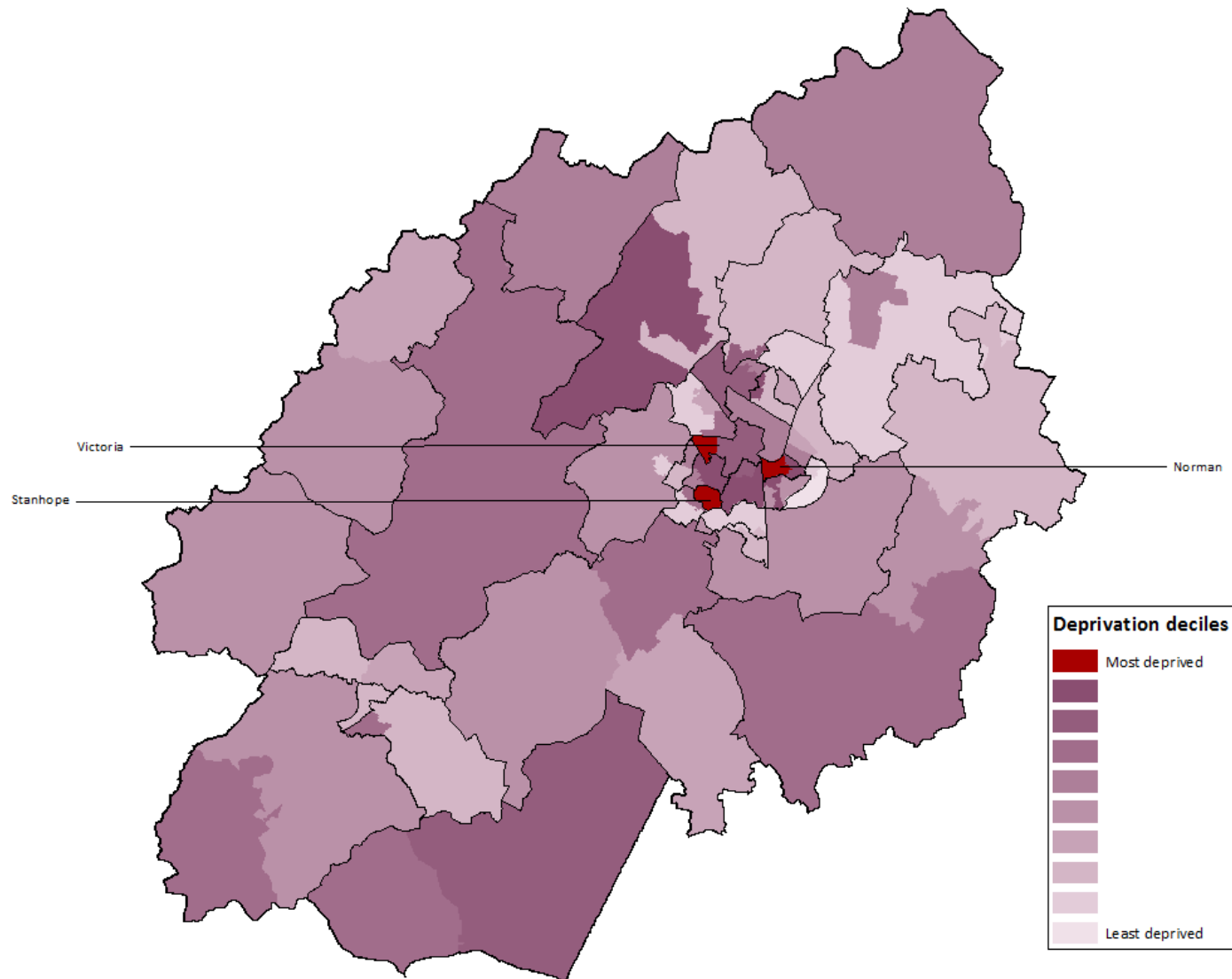
While population is increasing for all age bands the greatest growth is seen in the 65 years and over age band.

Source: ONS 2014 based population projections, prepared by KPHO (LLY), 07/17

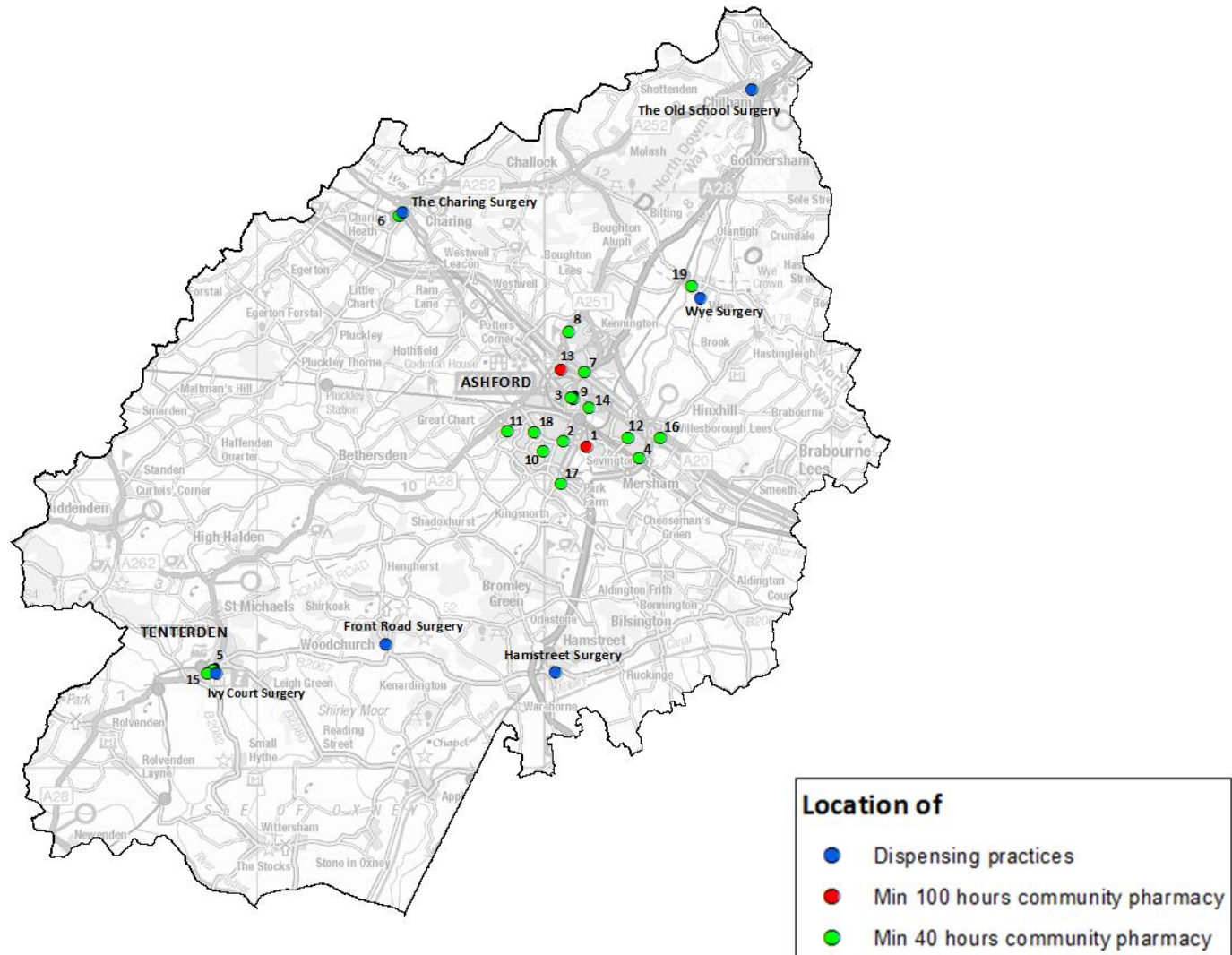
Ethnicity profile



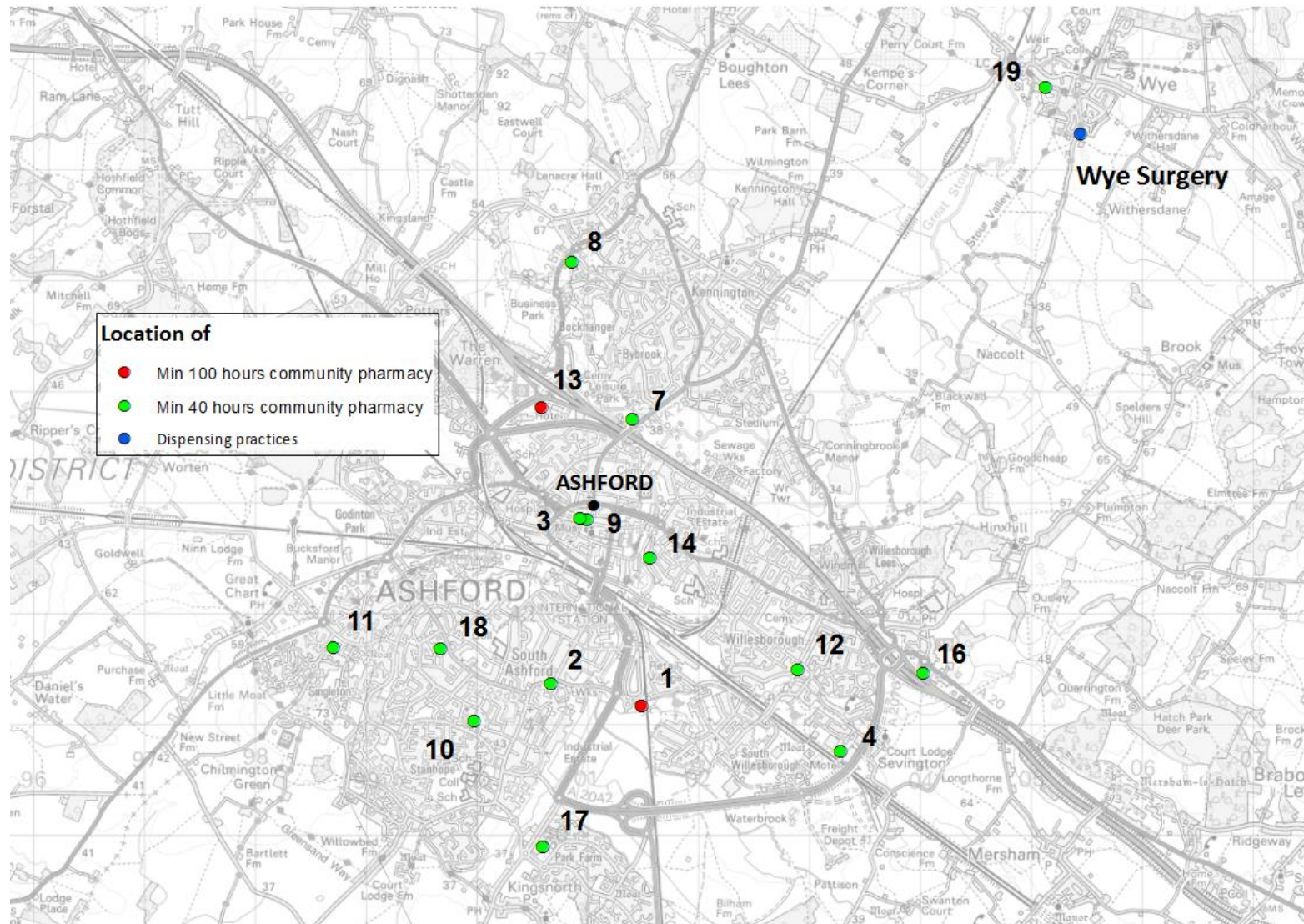
Index of multiple deprivation(2015, Kent deciles)



Providers of pharmaceutical services



Providers of pharmaceutical services: Ashford town centre and Wye

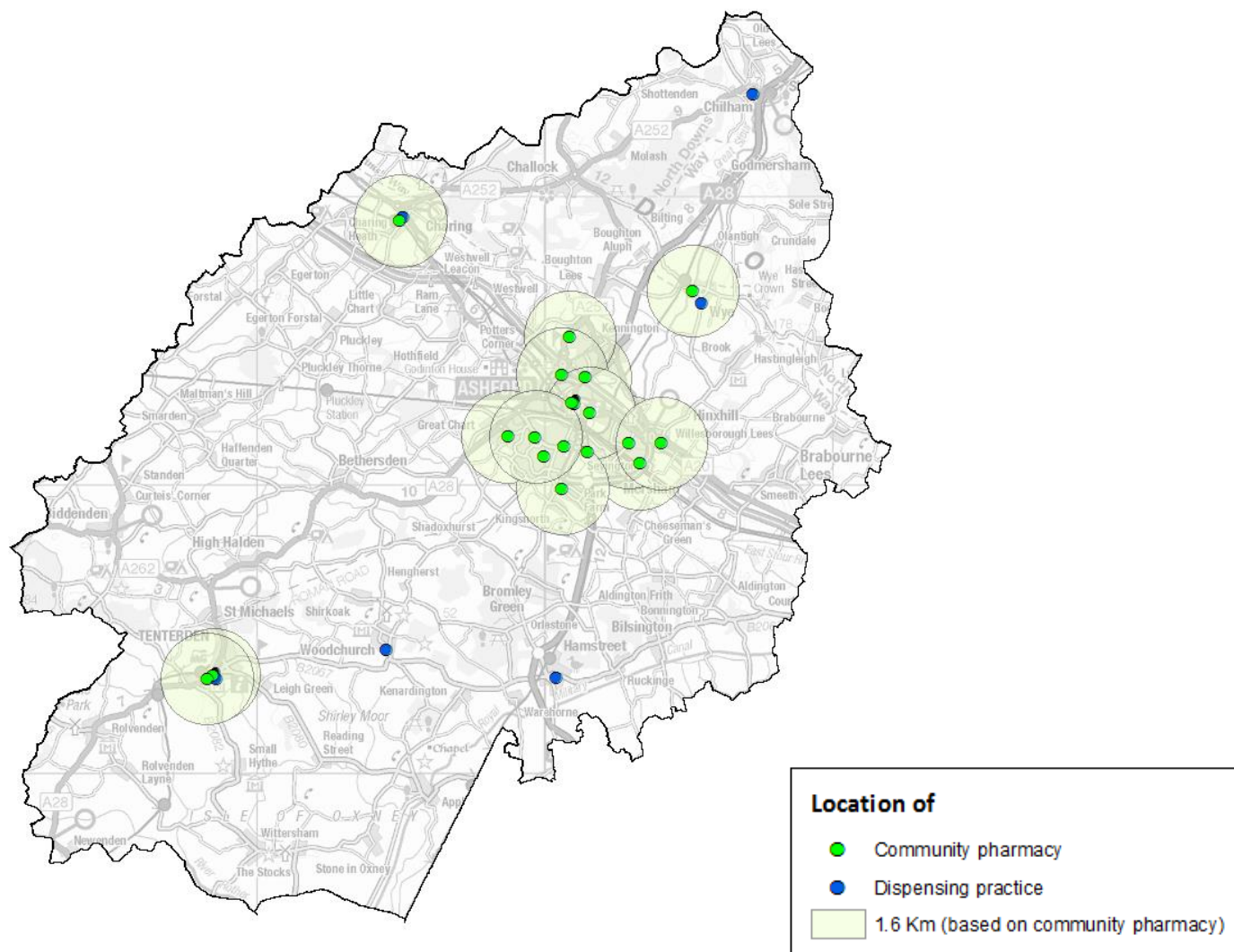


Providers of pharmaceutical services

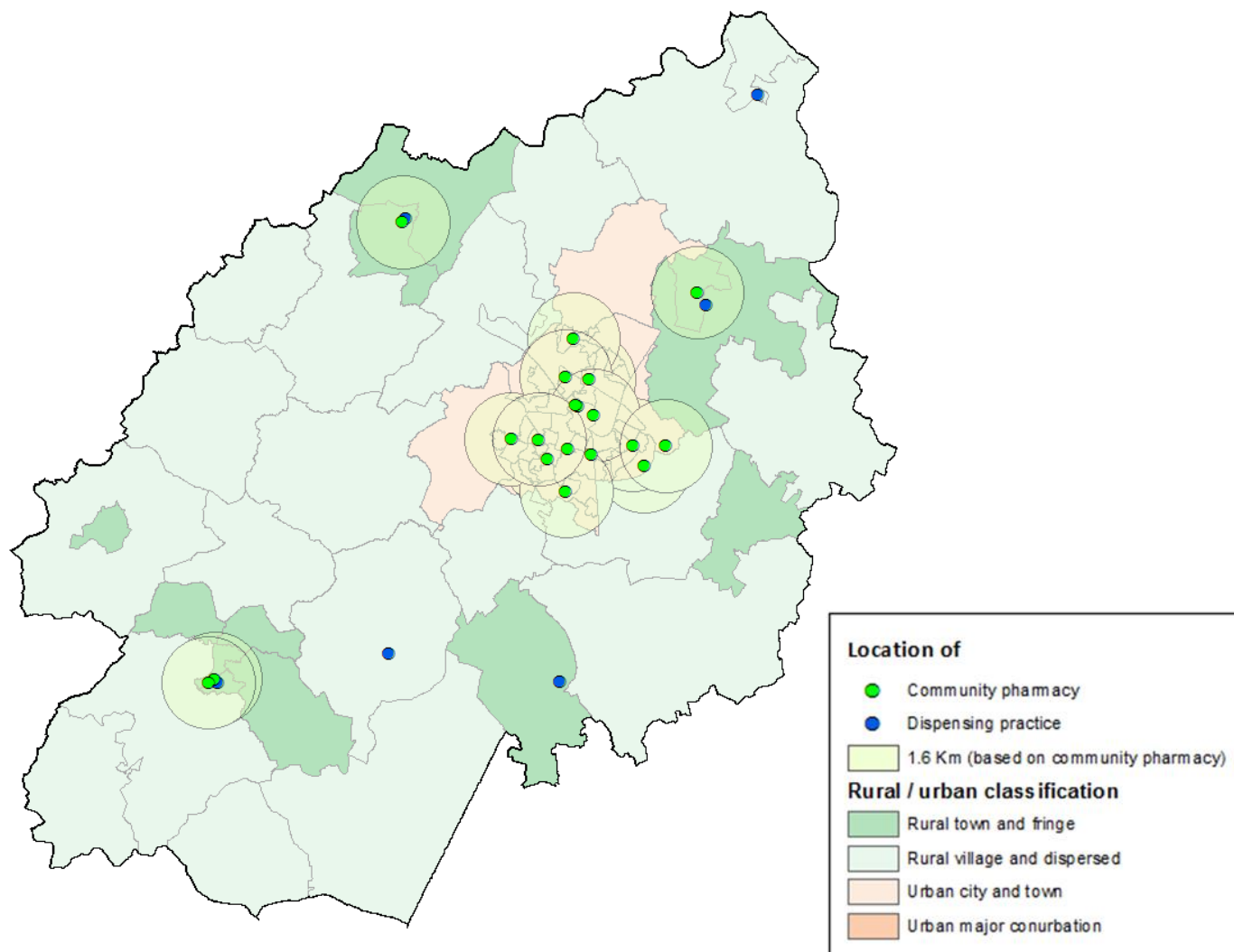
Community Pharmacies					
ID	Locality	Ward (2011)	Trading name	Postcode	Contract
1	Ashford	Norman	Asda Pharmacy	TN240SE	Min 100 hours
2	Ashford	Norman	Ashworths Dispensing	TN237SJ	Min 40 hours
3	Ashford	Victoria	Boots	TN248TB	Min 40 hours
4	Ashford	Highfield	Boots	TN240SG	Min 40 hours
5	Tenterden	Tenterden North	Boots	TN306AH	Min 40 hours
6	Ashford	Charing	Charing Pharmacy	TN270HZ	Min 40 hours
7	Ashford	Bybrook	Courts Pharmacy	TN249JZ	Min 40 hours
8	Ashford	Boughton Aluph & Eastwell	Delmergate Ltd	TN254BY	Min 40 hours
9	Ashford	Victoria	Kamsons	TN248SE	Min 40 hours
10	Ashford	Beaver	Kamsons	TN235AQ	Min 40 hours
11	Ashford	Singleton South	Lloyds Pharmacy	TN235GR	Min 40 hours
12	Ashford	Highfield	Lloyds Pharmacy	TN240HZ	Min 40 hours
13	Ashford	Stour	Lloyds Pharmacy in Sainbury's	TN248YN	Min 100 hours
14	Ashford	Stour	Paydens Ltd	TN248DN	Min 40 hours
15	Tenterden	Tenterden North	Paydens Ltd	TN306AU	Min 40 hours
16	Ashford	North Willesborough	Tesco Pharmacy	TN240YE	Min 40 hours
17	Ashford	Park Farm North	Tesco Pharmacy	TN233LU	Min 40 hours
18	Ashford	Beaver	Well	TN235ER	Min 40 hours
19	Wye	Wye	Well	TN255EA	Min 40 hours

Dispensing Practices						
ID	Practice code	Practice name	Main site?	Dispensing at site?	Postcode	Ward (2011)
1	G82053	Front Road Surgery	Y	Yes	TN263SF	Weald South
2	G82094	The Charing Surgery	Y	Yes	TN270AW	Charing
3	G82114	Ivy Court Surgery	Y	Yes	TN306RB	Tenterden South
4	G82142	Wye Surgery	Y	Yes	TN255AY	Wye
5	G82186	Hamstreet Surgery	Y	Yes	TN262NJ	Weald South
6	G82658	Sellindge Surgery (appears on SKC map)	Y	Yes	TN256JX	North Downs West
7	G82790	The Old School Surgery (part of Canterbury)	N	Yes	CT48DR	Downs North

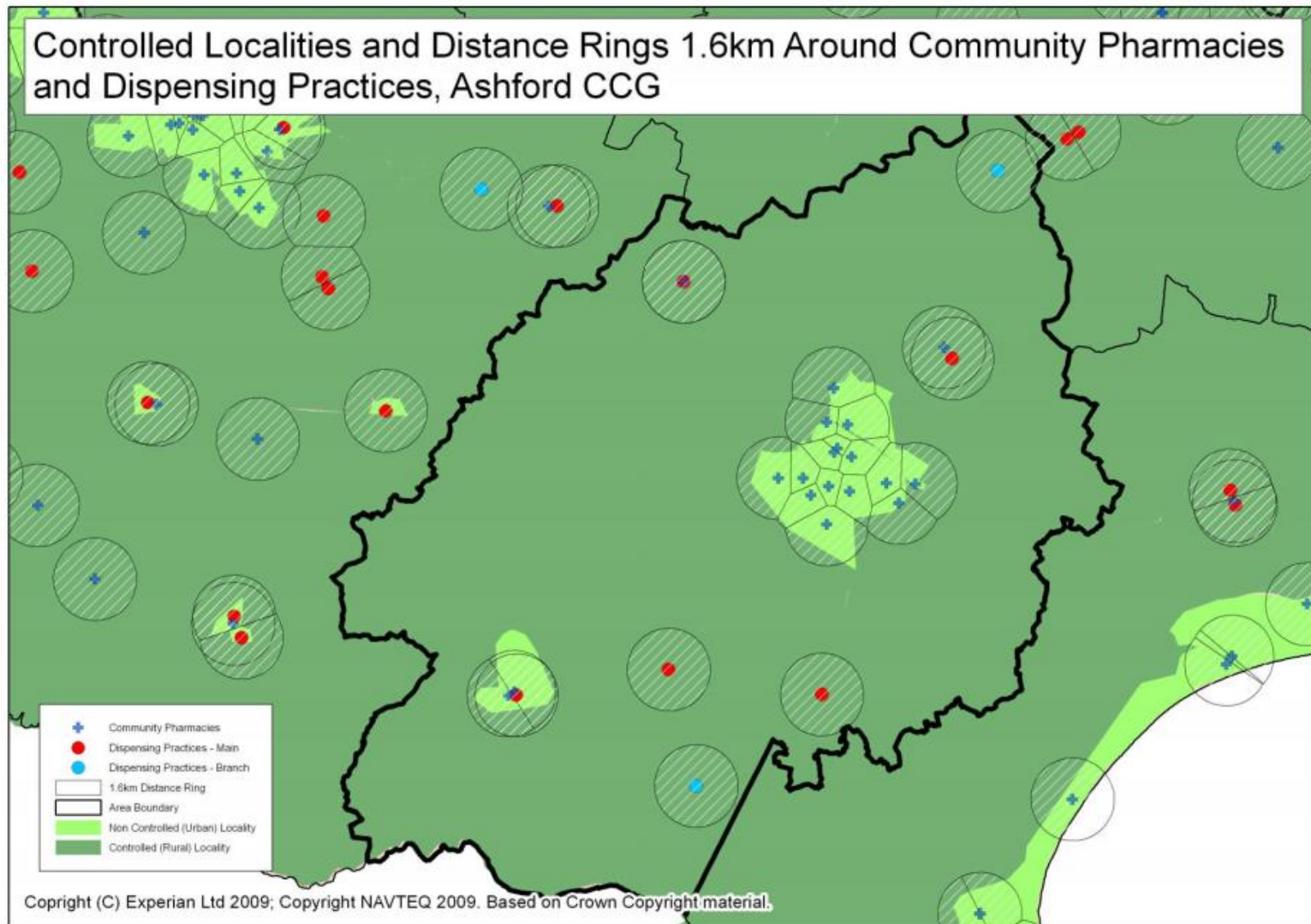
Distance rings (1.6km) around community pharmacies



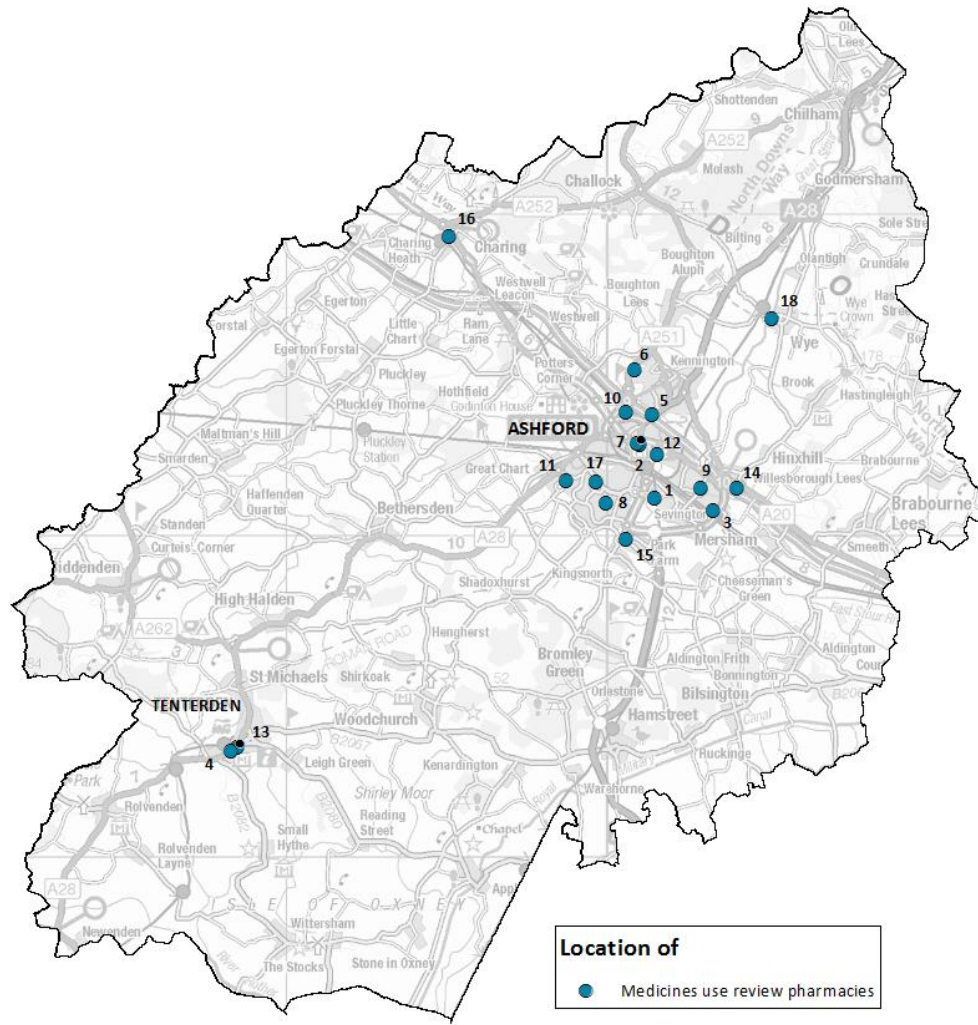
Distance rings (1.6km) around community pharmacies with rural urban classification (2011)



Controlled localities and distance rings



Pharmacies providing medicines use review



Pharmacies providing medicines use review

Medicine use review pharmacies			
ID	Pharmacy Name	Postcode	Ward (2011)
1	Asda Pharmacy	TN240SE	Norman
2	Boots	TN248TB	Victoria
3	Boots	TN240SG	Highfield
4	Boots	TN306AH	Tenterden North
5	Courts Pharmacy	TN249JZ	Bybrook
6	Delmergate Limited	TN254BY	Boughton Aluph & Eastwell
7	Kamsons Pharmacy	TN248SE	Victoria
8	Kamsons Pharmacy	TN235AQ	Beaver
9	Lloyds Pharmacy	TN240HZ	Highfield
10	Lloyds Pharmacy	TN248YN	Stour
11	Lloyds Pharmacy	TN235GR	Singleton South
12	Paydens Ltd	TN248DN	Stour
13	Paydens Ltd	TN306AU	Tenterden North
14	Tesco Pharmacy	TN240YE	North Willlesborough
15	Tesco Pharmacy	TN233LU	Park Farm North
16	The Charing Pharmacy	TN270AW	Charing
17	Well Ashford	TN235ER	Beaver
18	Well Wye	TN255EA	Wye

KENT PUBLIC HEALTH
OBSERVATORY



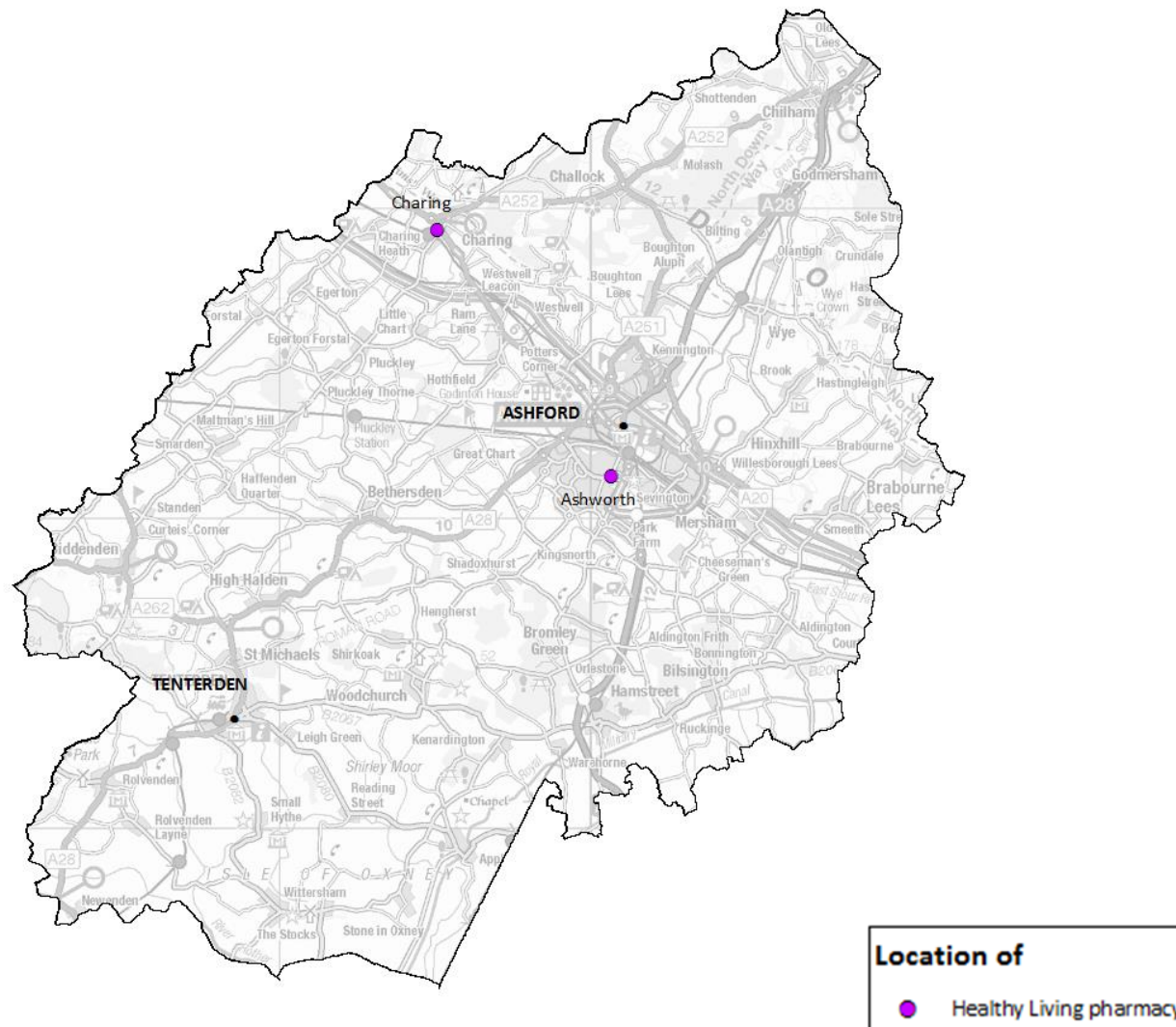
Pharmacies providing new medicines service

New medicine review				
ID	Pharm code	Trading name	Postcode	Ward (2011)
1	FGC22	Boots	TN248TB	Victoria
2	FFE44	Boots	TN240SG	Highfield
3	FX044	Boots	TN306AH	Tenterden North
4	FYC81	Courts Pharmacy	TN249JZ	Bybrook
5	FLH05	Delmergate Limited	TN254BY	Boughton Aluph & Eastwell
6	FC768	Kamsons Pharmacy	TN248SE	Victoria
7	FCP30	Kamsons Pharmacy	TN235AQ	Beaver
8	FFH17	Lloyds Pharmacy	TN240HZ	Highfield
9	FNQ15	Lloyds Pharmacy	TN248YN	Stour
10	FF573	Lloyds Pharmacy	TN235GR	Singleton South
11	FJ121	Paydens Ltd	TN248DN	Stour
12	FQ178	Paydens Ltd	TN306AU	Tenterden North
13	FQQ79	Tesco Pharmacy	TN240YE	North Willesborough
14	FTJ35	Tesco Pharmacy	TN233LU	Park Farm North
15	FT747	The Charing Pharmacy	TN270AW	Charing
16	FAH18	Well Ashford	TN235ER	Beaver
17	FTT47	Well Wye	TN255EA	Wye

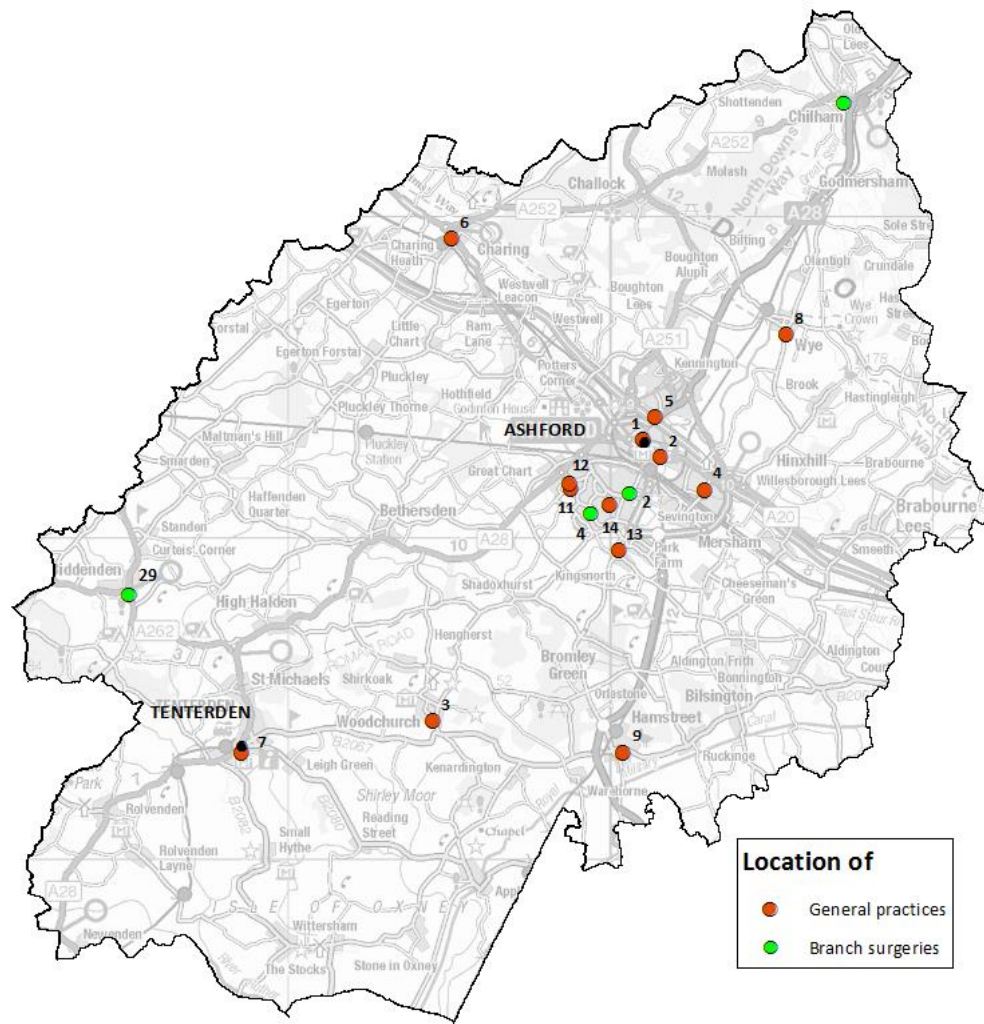
KENT PUBLIC HEALTH
OBSERVATORY



Healthy Living pharmacies



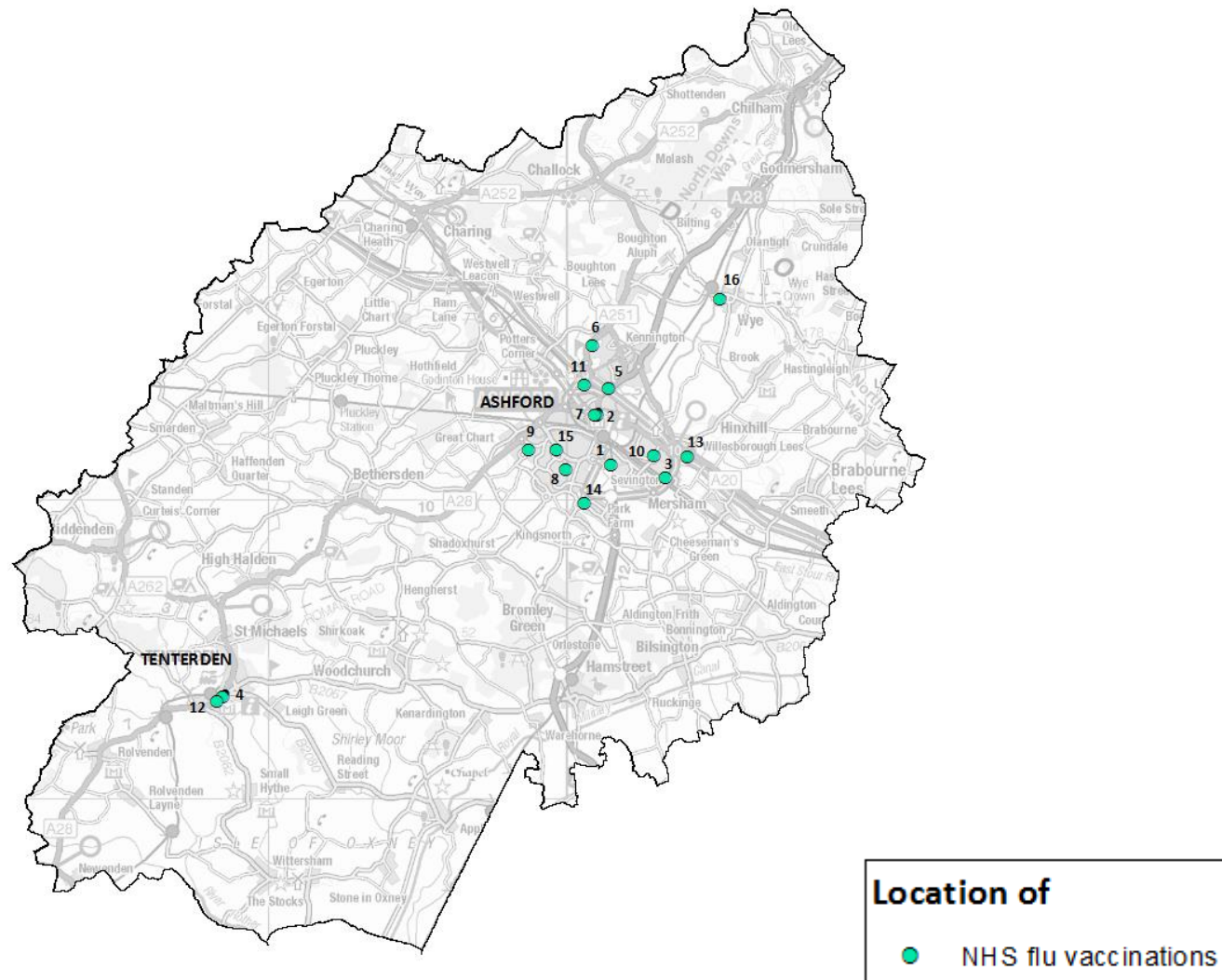
General practices



General practices

General practices - Main				
Key	Practice Code	Practice Name	Postcode	Ward (2011)
1	G82049	Hollington Surgery	TN248UN	Victoria
2	G82050	Sydenham House Medical Centre	TN248DN	Stour
3	G82053	Front Road Surgery	TN263SF	Weald South
4	G82080	The Willesborough Medical Ctr	TN240HZ	Highfield
5	G82087	New Hayesbank Surgery	TN249JZ	Bybrook
6	G82094	The Charing Surgery	TN270AW	Charing
7	G82114	Ivy Court Surgery	TN306RB	Tenterden South
8	G82142	Wye Surgery	TN255AY	Wye
9	G82186	Hamstreet Surgery	TN262NJ	Weald South
10	G82658	Sellindge Surgery (On SKC CCG map)	TN256JX	North Downs West
11	G82688	Singleton Surgery	TN235LB	Singleton South
12	G82712	Singleton Medical Centre	TN235GR	Singleton South
13	G82730	Kingsnorth Medical Practice	TN233ED	Weald East
14	G82735	South Ashford Medics	TN235AQ	Beaver

General practices - Branch				
Key	Practice Code	Practice Name	Postcode	Ward (2011)
2	G82050	Sydenham House Medical Centre	TN237SP	Norman
4	G82080	Singleton Surgery	TN235SU	Stanhope
29	G82112	Headcorn Surgery (part of WK CCG)	TN279AA	Headcorn



NHS flu vaccination

NHS flu vaccinations			
Key	Pharmacy Name	Postcode	Ward (2011)
1	Asda Pharmacy	TN240SE	Norman
2	Boots Pharmacy	TN248TB	Victoria
3	Boots Pharmacy	TN240SG	Highfield
4	Boots Pharmacy	TN306AH	Tenterden North
5	Courts Pharmacy	TN249JZ	Bybrook
6	Delmergate Ltd	TN254BY	Boughton Aluph & Eastwell
7	Kamsons Pharmacy	TN248SE	Victoria
8	Kamsons Pharmacy	TN235AQ	Beaver
9	Lloyds Pharmacy	TN235GR	Singleton South
10	Lloyds Pharmacy	TN240HZ	Highfield
11	Lloyds Pharmacy in Sainbury's	TN248YN	Stour
12	Paydens Ltd	TN306AU	Tenterden North
13	Tesco Pharmacy	TN240YE	North Willesborough
14	Tesco Pharmacy	TN233LU	Park Farm North
15	Well Pharmacy	TN235ER	Beaver
16	Well Pharmacy	TN255EA	Wye



Orientation maps

- Source: Base layer available on ArcGIS



Population maps and information

- Sources Office for National Statistics (ONS), 2014 based forecasts used for population projections. All other populations are based on 2016 mid-year estimates (MYE)



Ethnicity profiles

- Source: Census 2011 via National Online Manpower Information System (NOMIS)



Index of multiple deprivation

- Source: Department for Communities & Local Government, shows a relative deprivation score



Pharmaceutical services

- Source: NHS England, data collected for 2016/17 (April 16 to February 17), Healthy Living Pharmacies data collected from KCC (2017)



General practices

- Source: Primary Care Information System (PCIS), correct as of November 2016