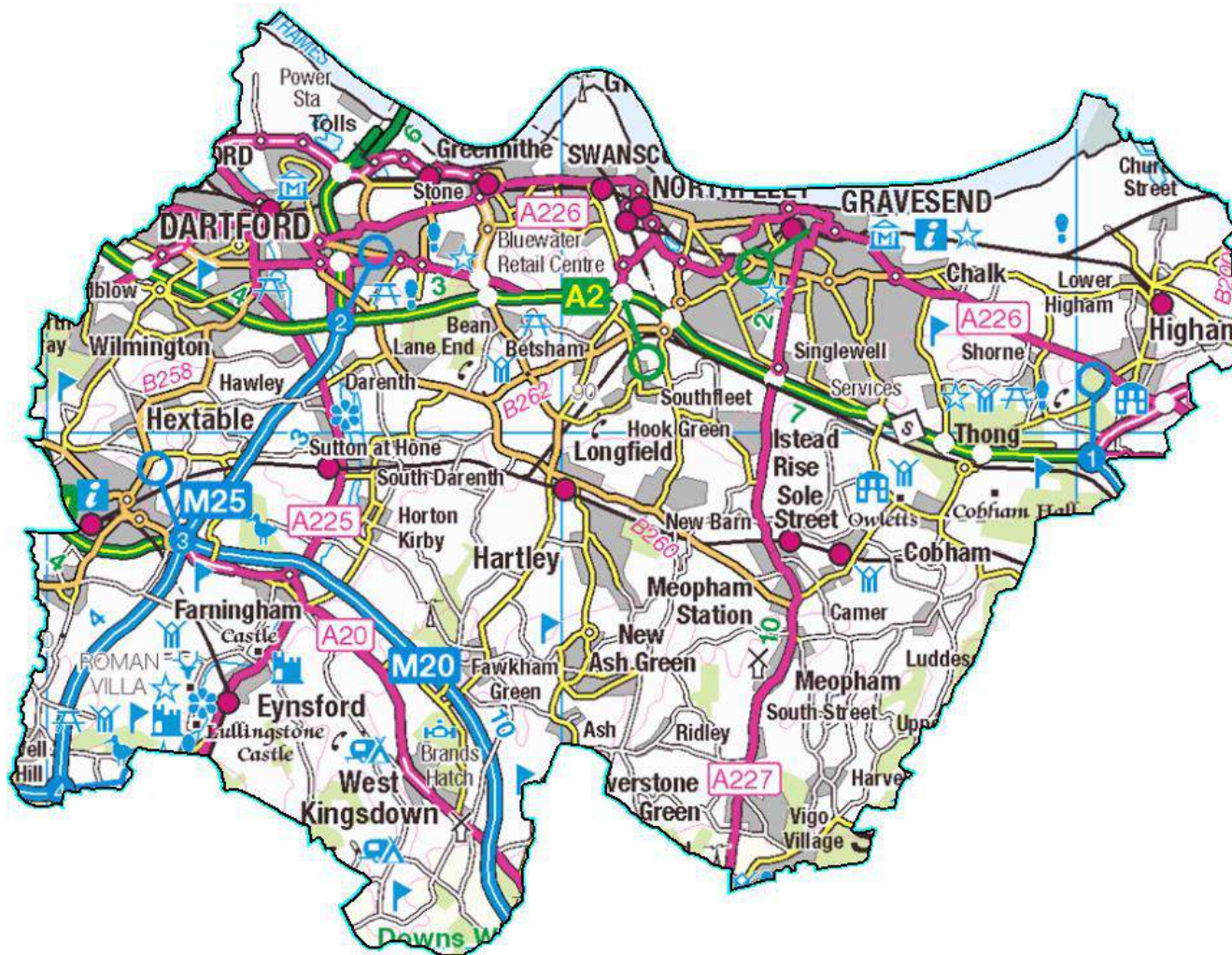


Pharmaceutical Needs Assessment

NHS Dartford, Gravesham & Swanley CCG
Supplementary Data and Maps
Data correct as of February 2015

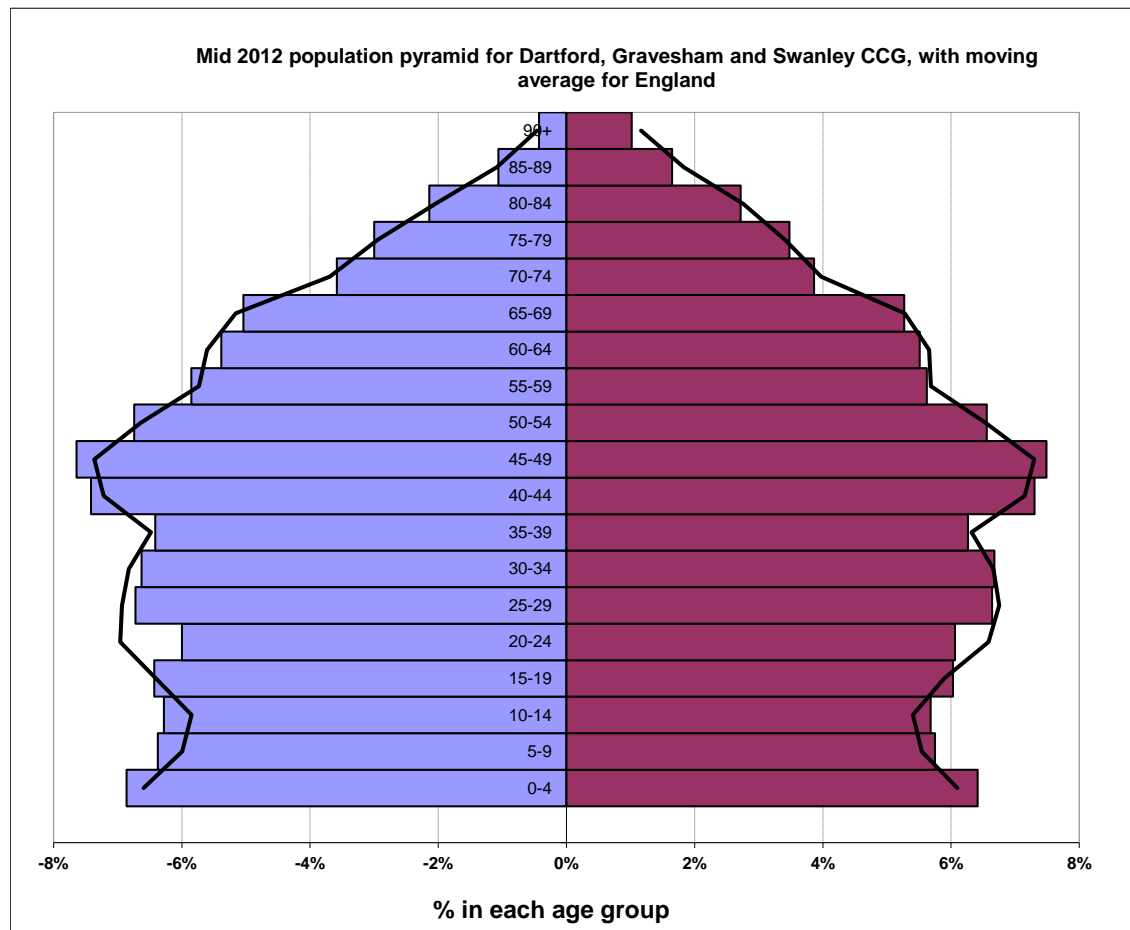
Orientation: NHS Dartford, Gravesham and Swanley CCG



Population

Mid Year Population Estimates for NHS Dartford, Gravesham and Swanley CCG, 2012 (Rounded)

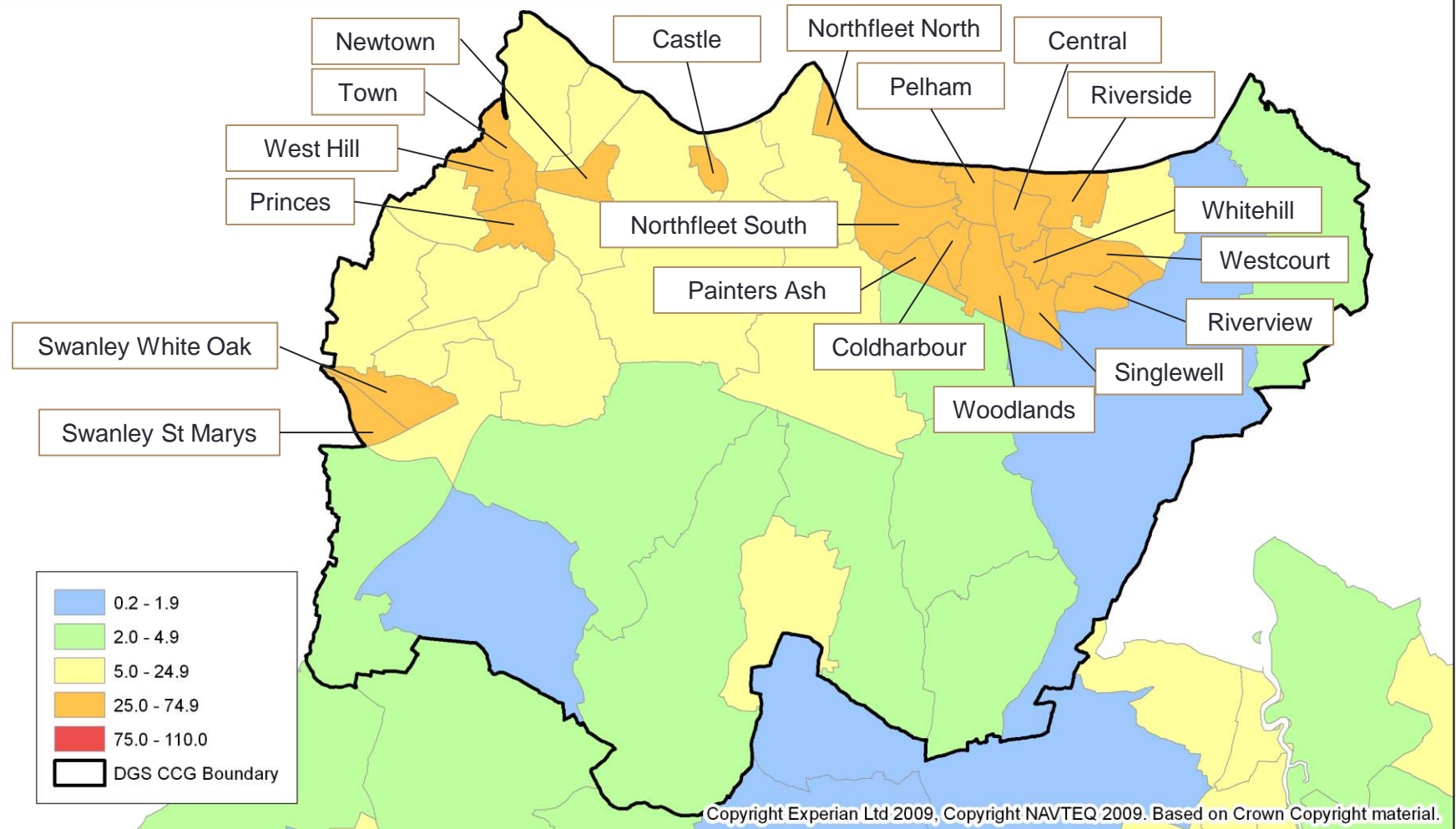
Age Band	Males	Females	Total
0-4	8400	8100	16500
5-9	7800	7300	15100
10-14	7700	7200	14900
15-19	7900	7600	15500
20-24	7400	7700	15000
25-29	8200	8400	16700
30-34	8100	8500	16600
35-39	7900	7900	15800
40-44	9100	9300	18300
45-49	9400	9500	18900
50-54	8300	8300	16600
55-59	7200	7100	14300
60-64	6600	7000	13600
65-69	6200	6700	12900
70-74	4400	4900	9300
75-79	3700	4400	8100
80-84	2600	3400	6100
85-89	1300	2100	3400
90+	500	1300	1800
All Ages	122500	126700	249200



Population Density 2012

Number of People per Hectare

Dartford, Gravesham and Swanley CCG



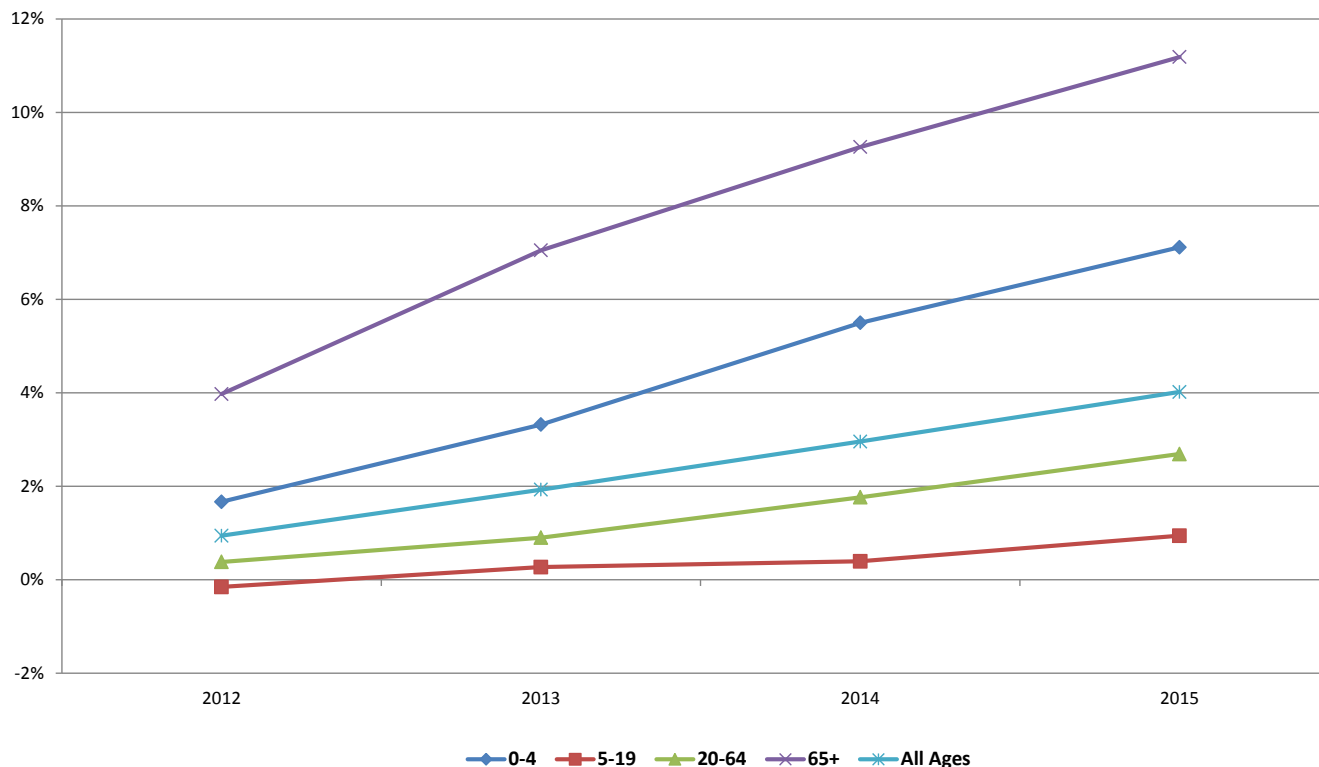
Population Growth

Projected Population Growth by Age Band, 2011 Base

Age Band	Year				
	2011	2012	2013	2014	2015
0-4	15923	16188	16452	16798	17056
5-19	45554	45484	45678	45734	45983
20-64	145058	145613	146366	147617	148962
65+	39896	41482	42708	43591	44359
All Ages	246443	248767	251196	253732	256348

Projected Population Change in 2012 - 2015 from 2011* for Dartford, Gravesham & Swanley CCG by Broad Age Group

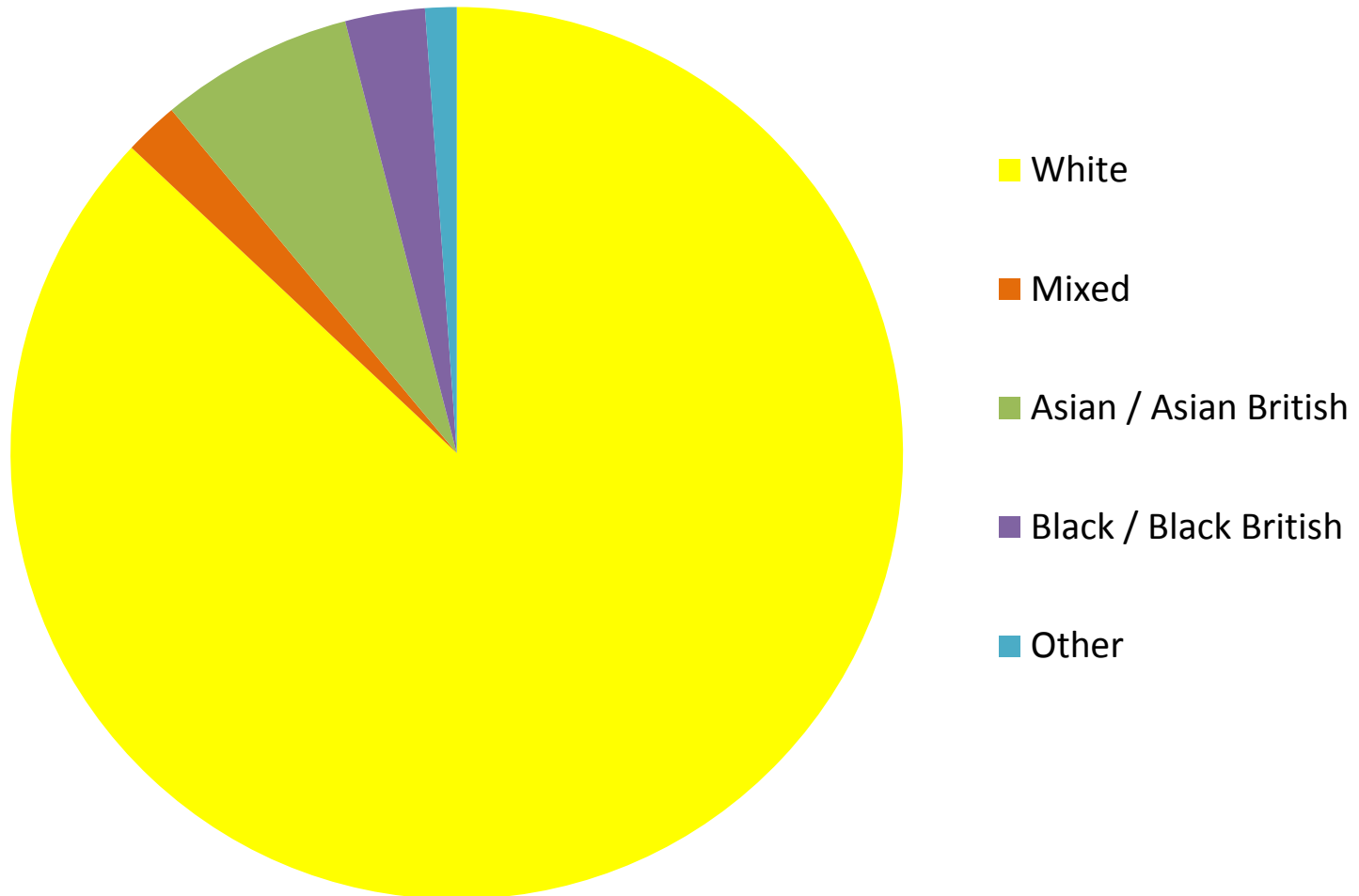
* Derived from ONS 2011 based population projections



Ethnicity

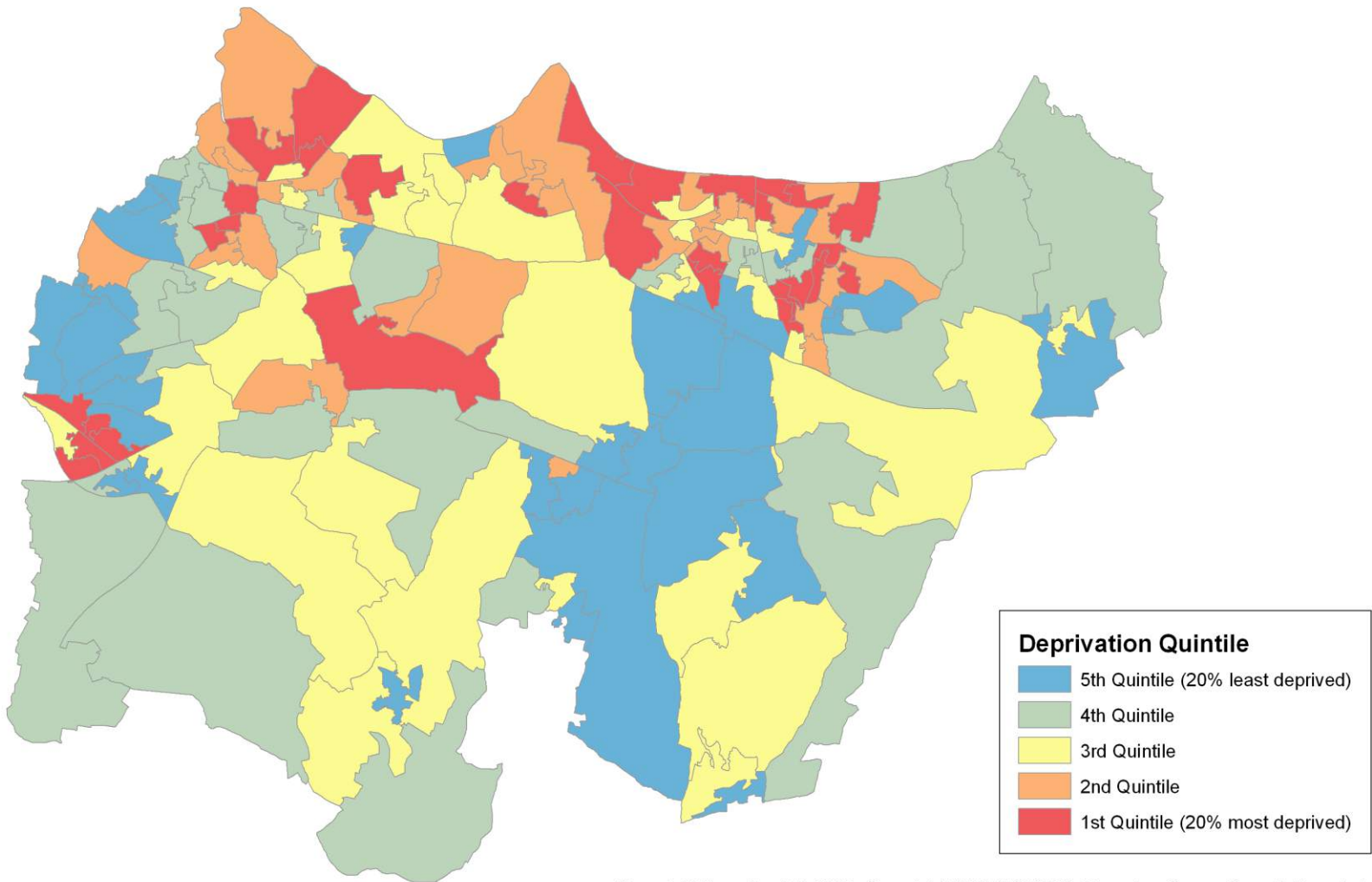
Ethnicity of NHS Dartford, Gravesham & Swanley CCG Residents

Source: Office of National Statistics Census 2011

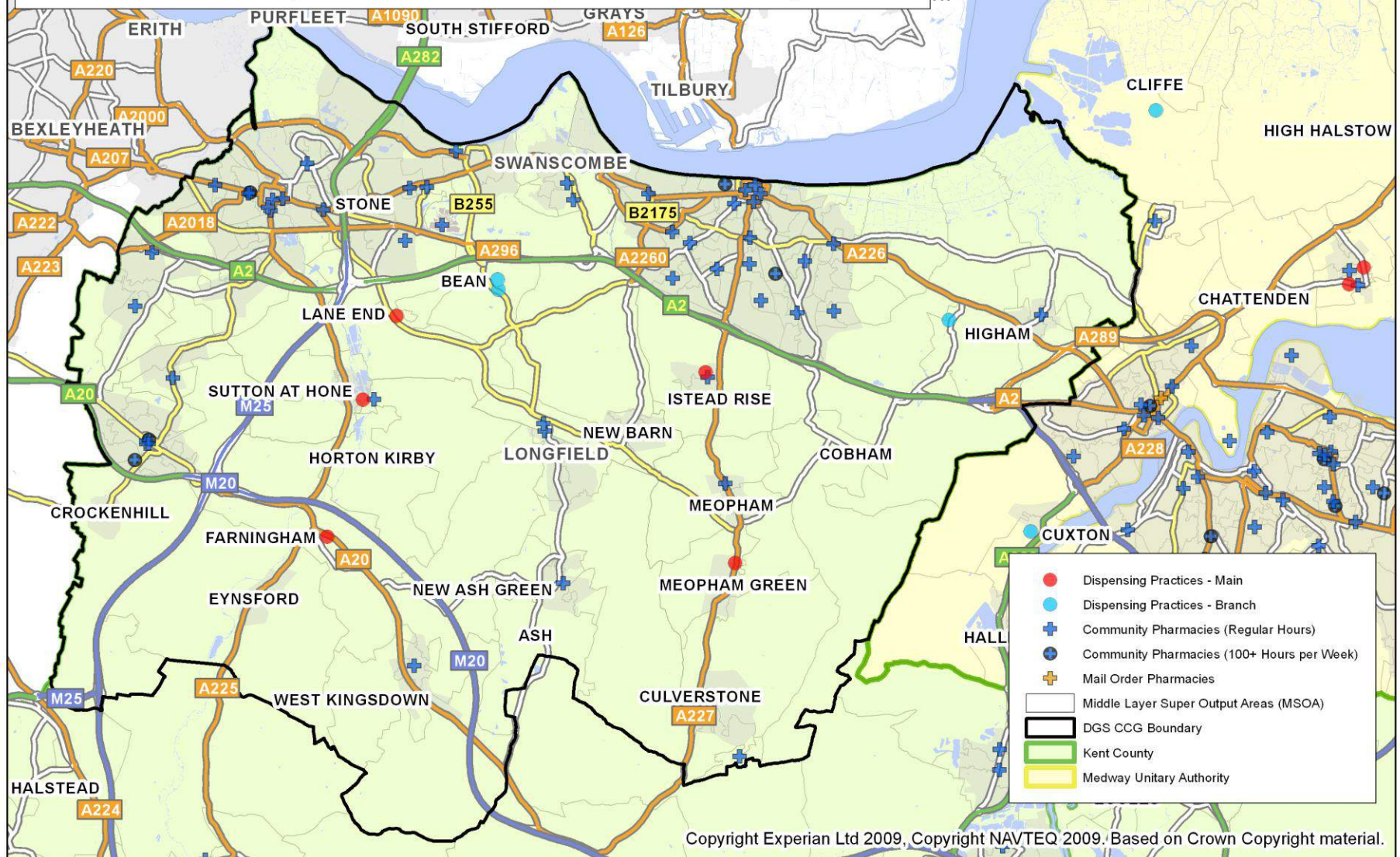


Index of Multiple Deprivation 2010

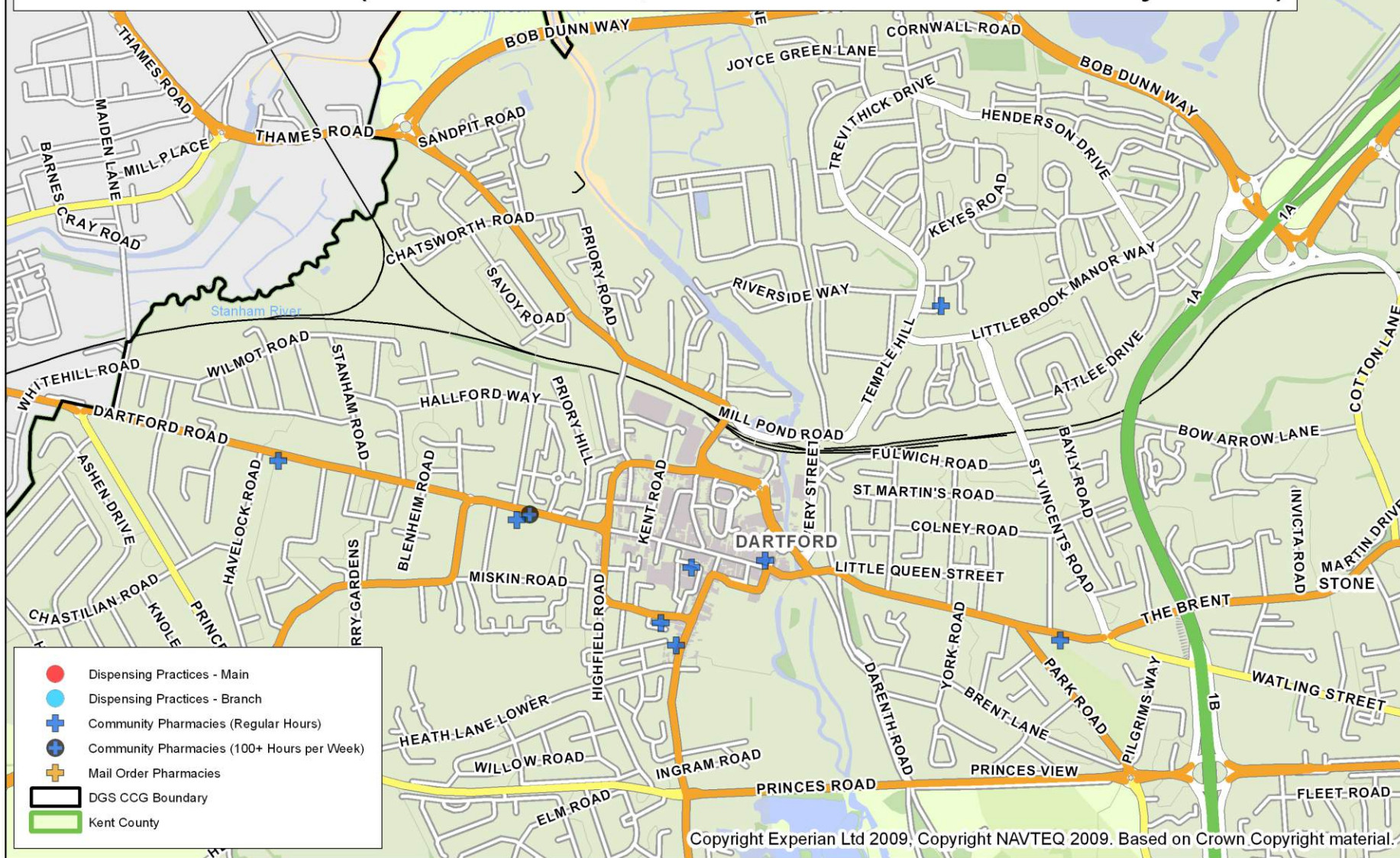
Quintiles of LSOAs within Dartford, Gravesham & Swanley CCG



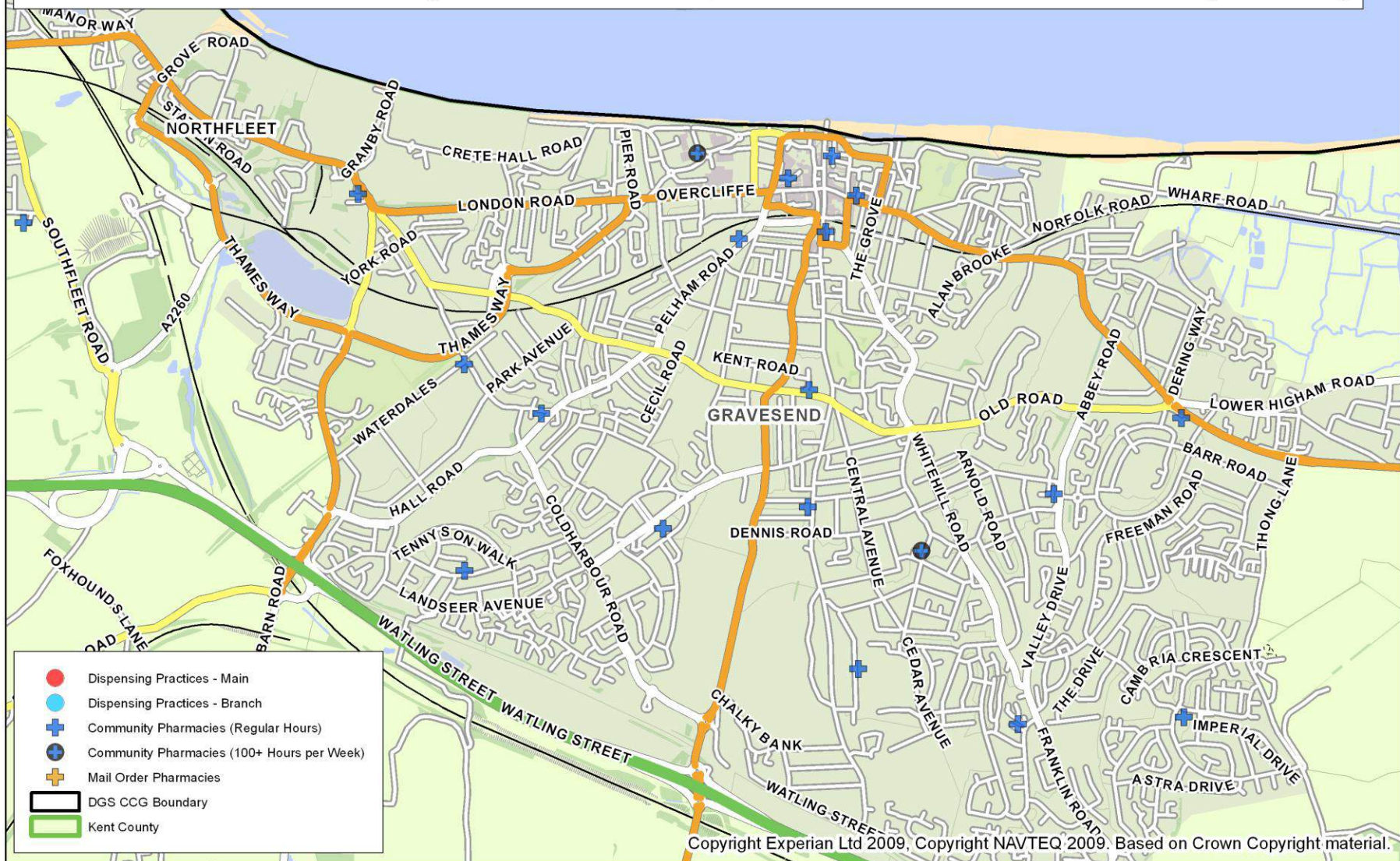
Location of Pharmaceutical Services NHS Dartford, Gravesham and Swanley CCG



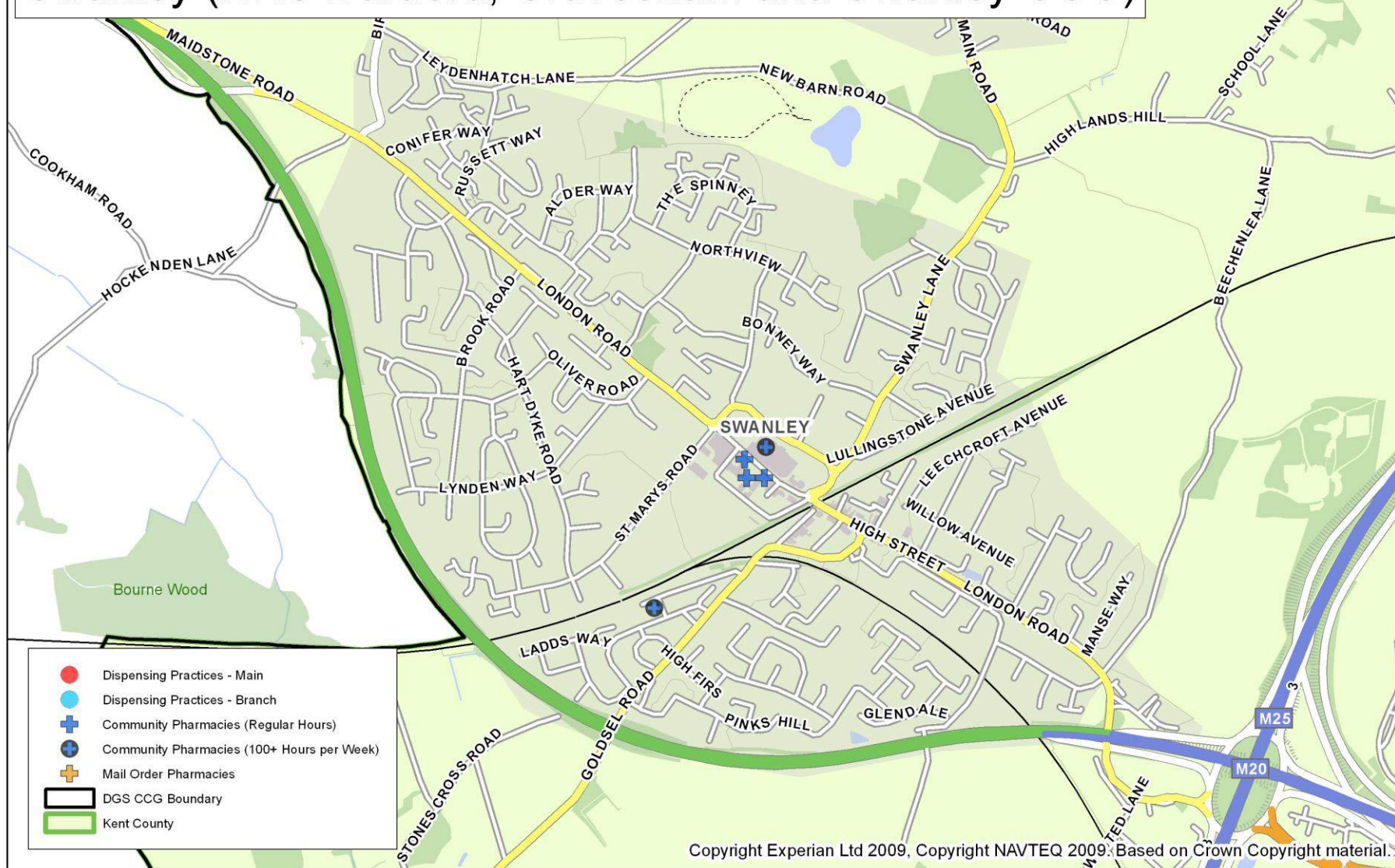
Location of Pharmaceutical Services Central Dartford (NHS Dartford, Gravesham and Swanley CCG)



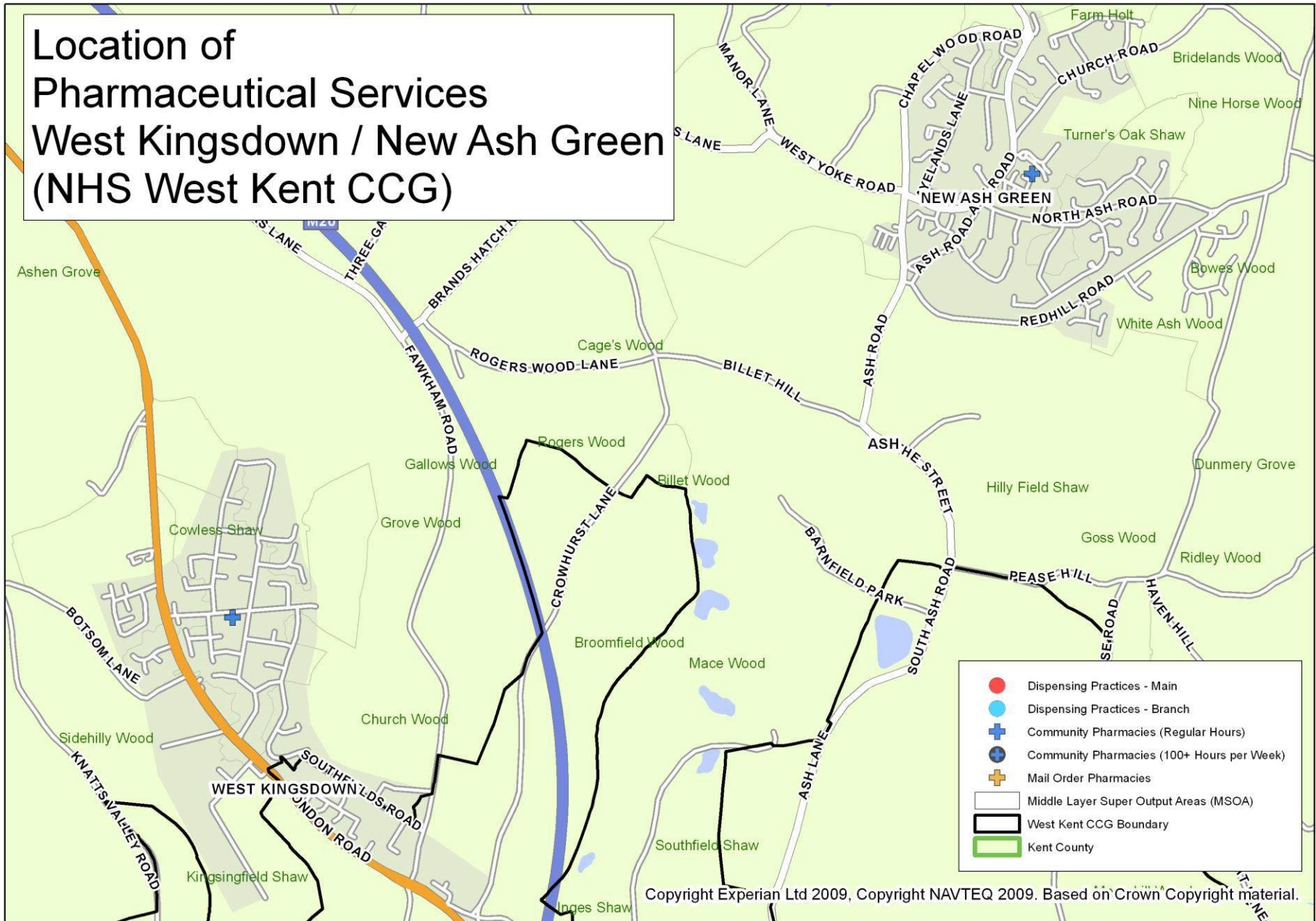
Location of Pharmaceutical Services Central Gravesham (NHS Dartford, Gravesham and Swanley CCG)



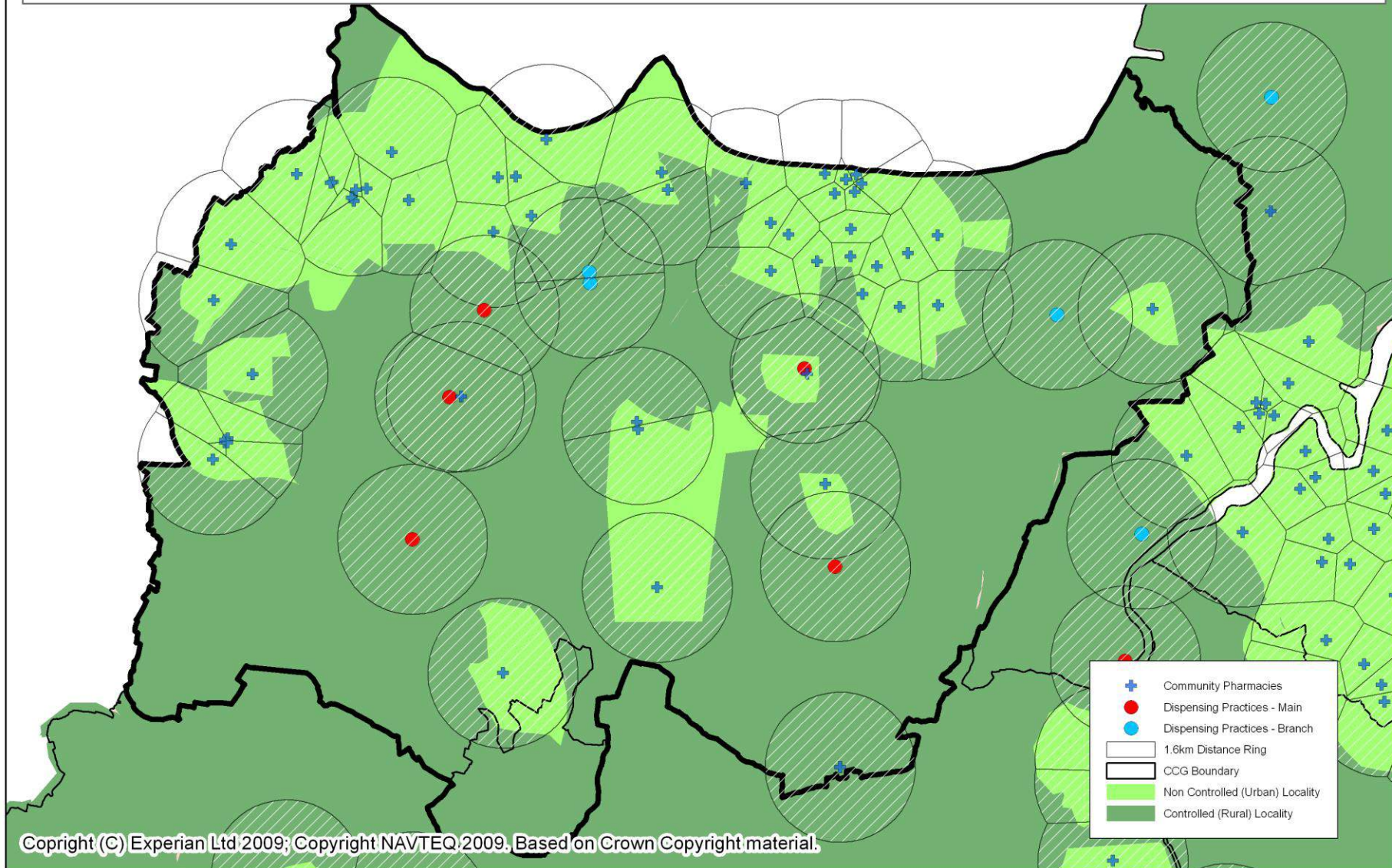
Location of Pharmaceutical Services Swanley (NHS Dartford, Gravesham and Swanley CCG)



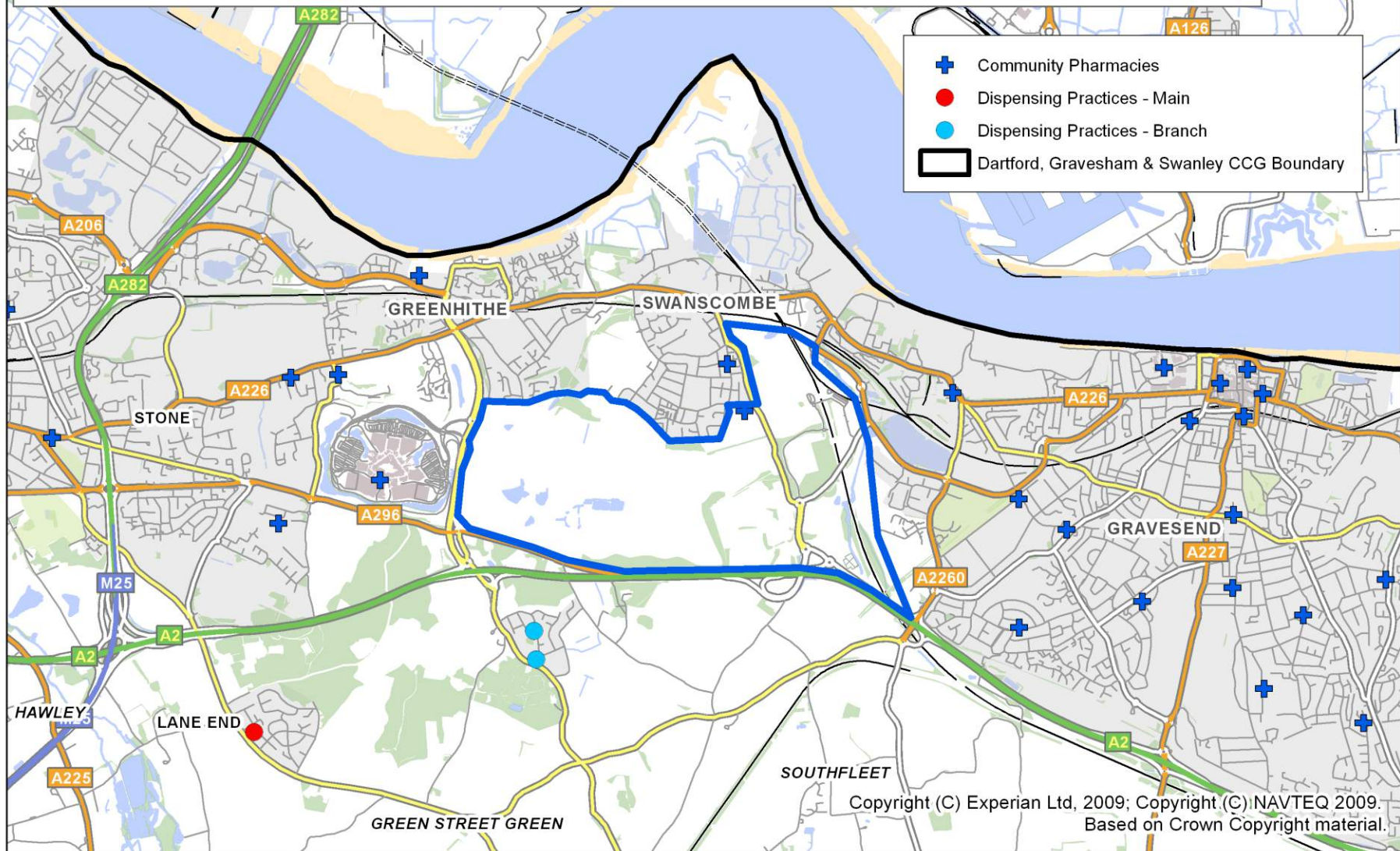
Location of Pharmaceutical Services West Kingsdown / New Ash Green (NHS West Kent CCG)



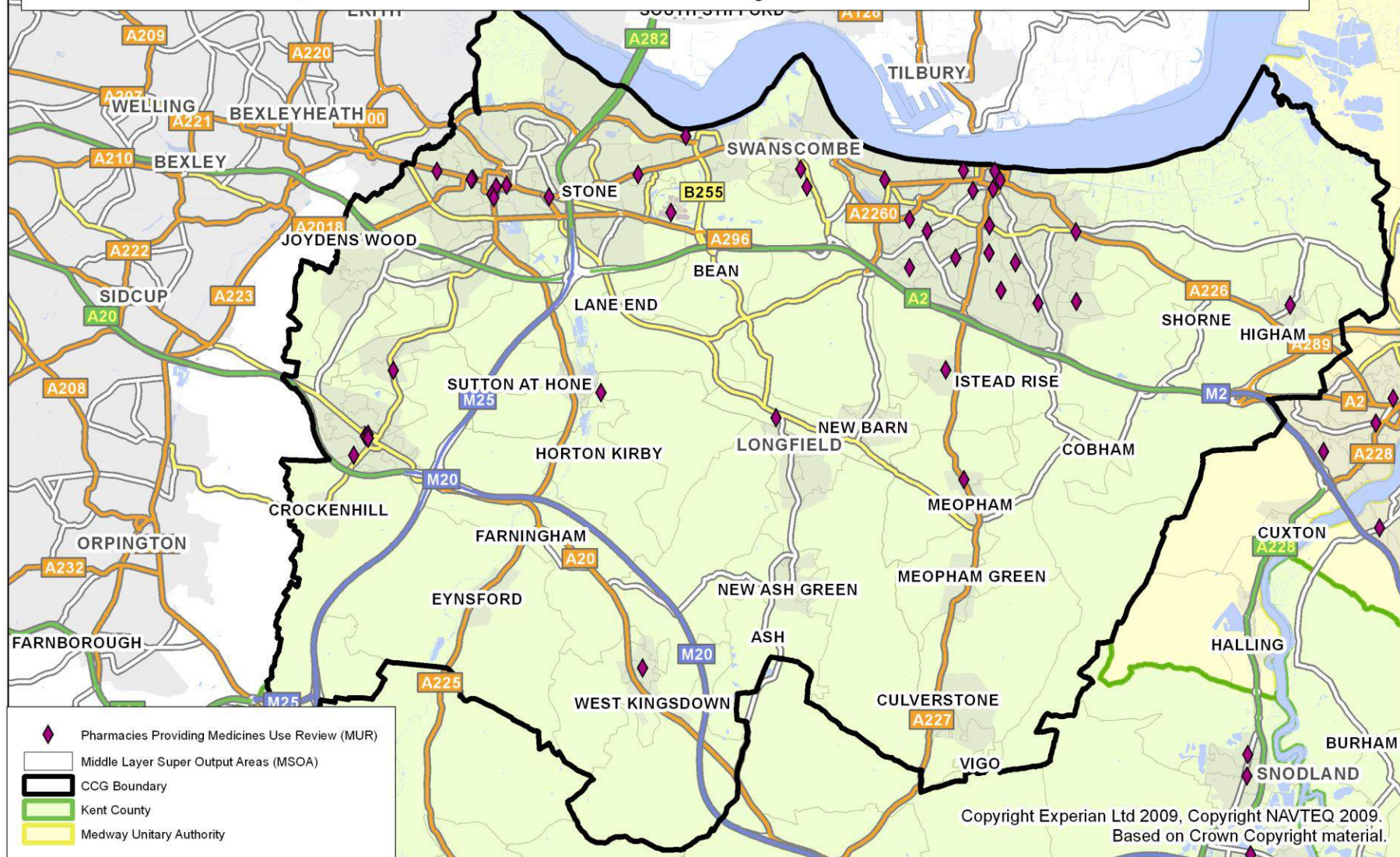
Controlled Localities and Distance Rings 1.6km Around Community Pharmacies and Dispensing Practices, Dartford, Gravesham & Swanley CCG



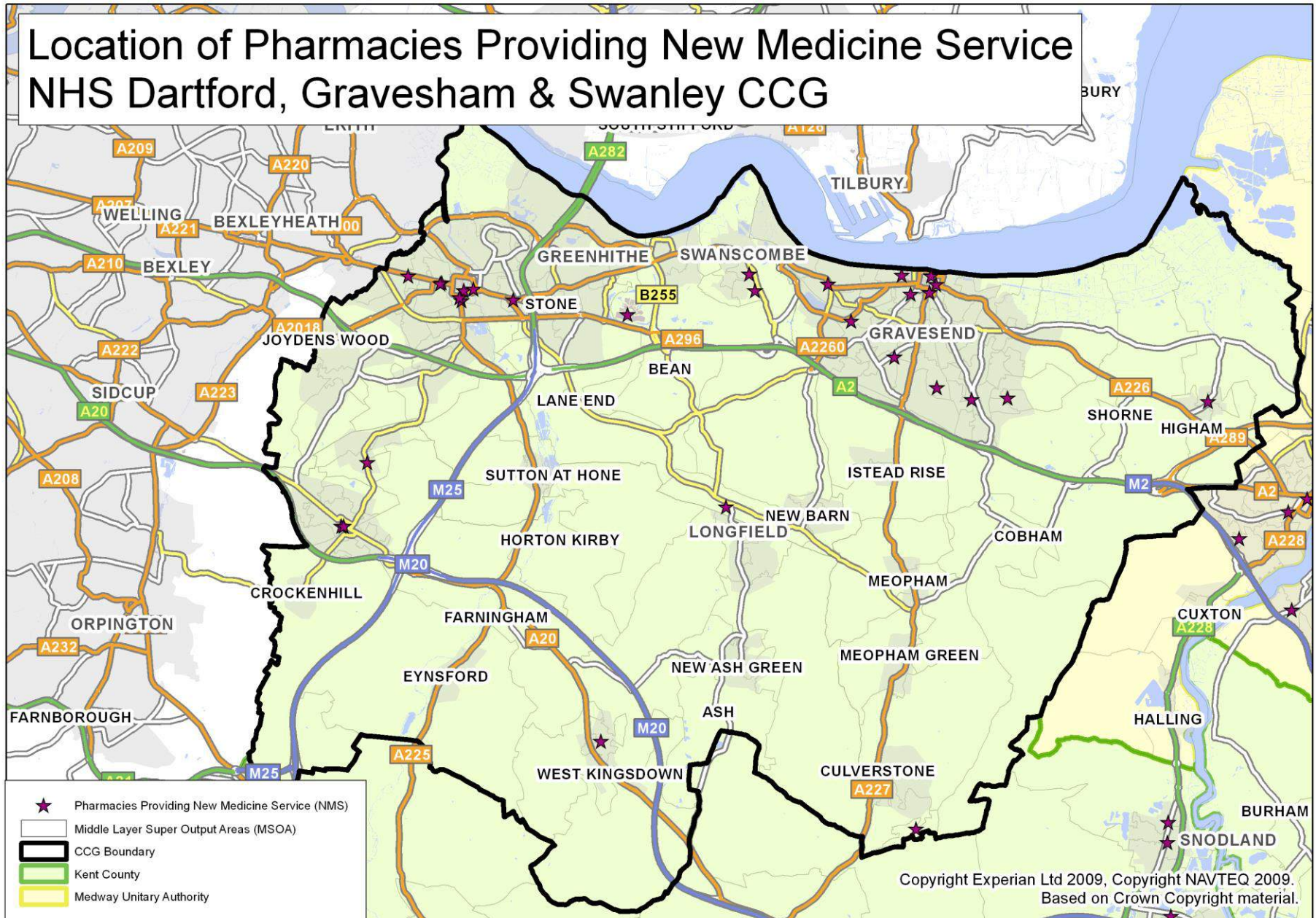
Prospective Housing Development Ebbsfleet Garden City (Dartford, Gravesham & Swanley CCG)



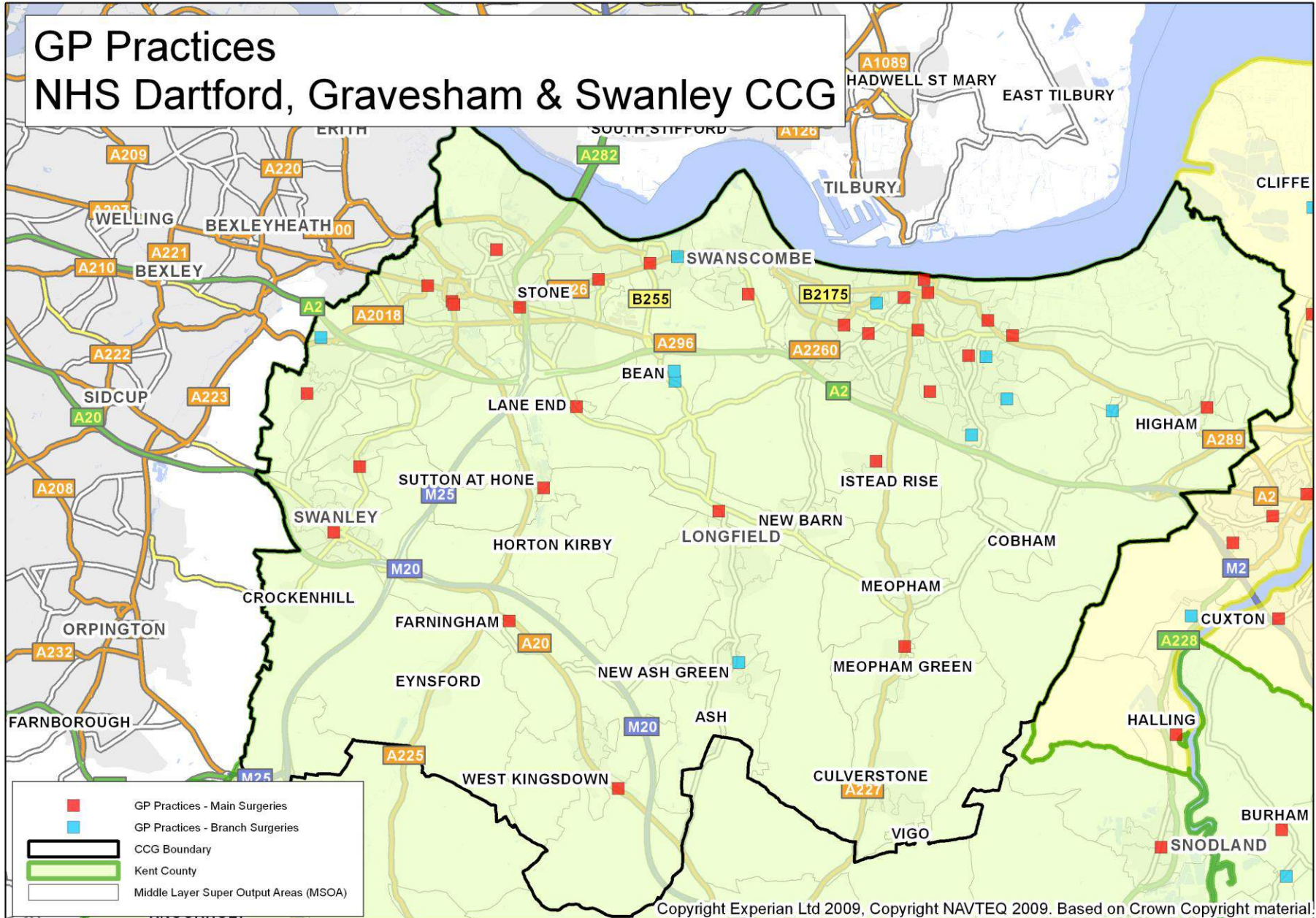
Location of Pharmacies Providing Medicines Use Review (MUR) NHS Dartford, Gravesham & Swanley CCG



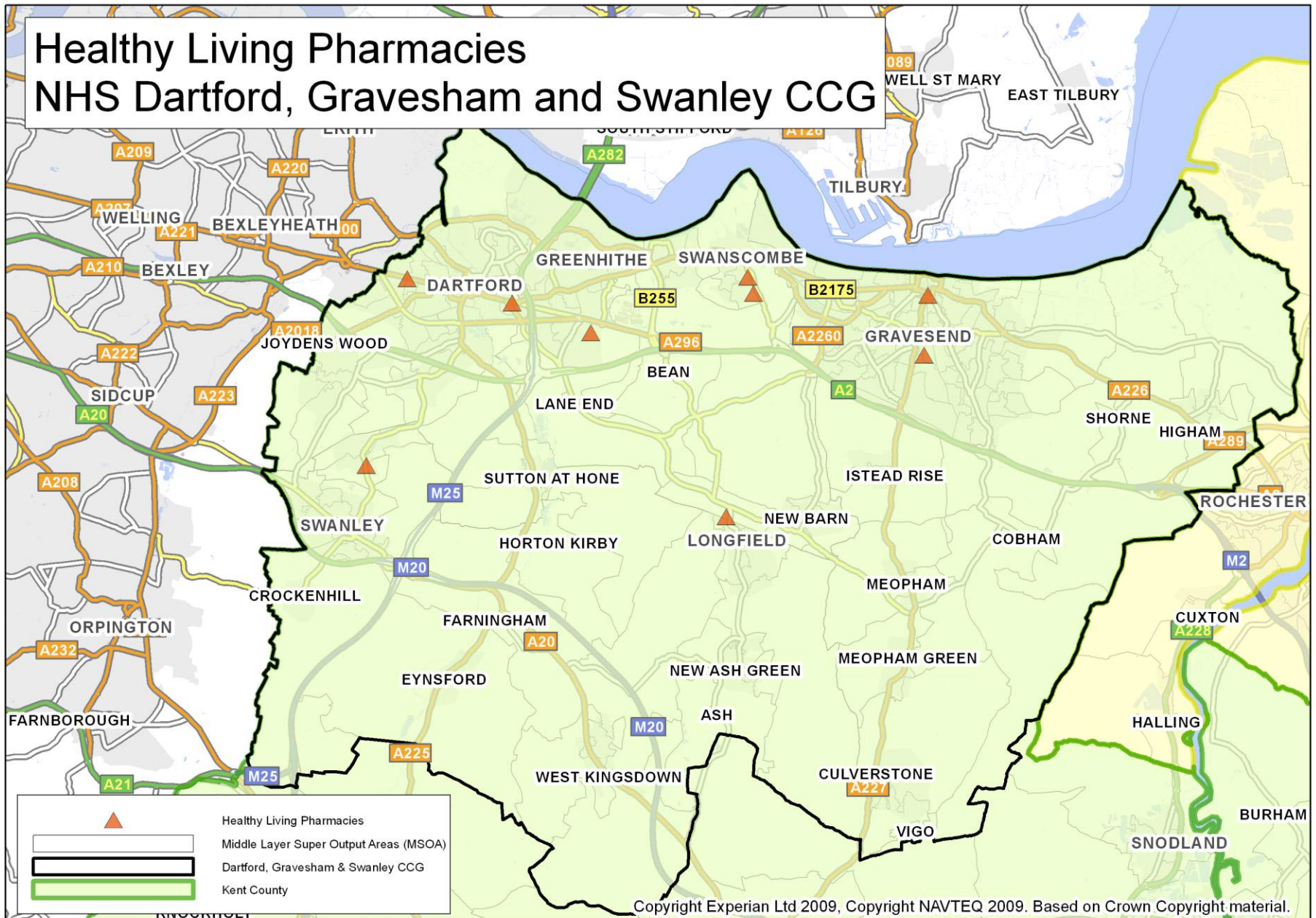
Location of Pharmacies Providing New Medicine Service NHS Dartford, Gravesham & Swanley CCG



GP Practices NHS Dartford, Gravesham & Swanley CCG



Healthy Living Pharmacies NHS Dartford, Gravesham and Swanley CCG



Pharmacies and Appliance Contractors Providing Stoma Customisation and Appliance Use Reviews

NHS Dartford, Gravesham and Swanley CCG

