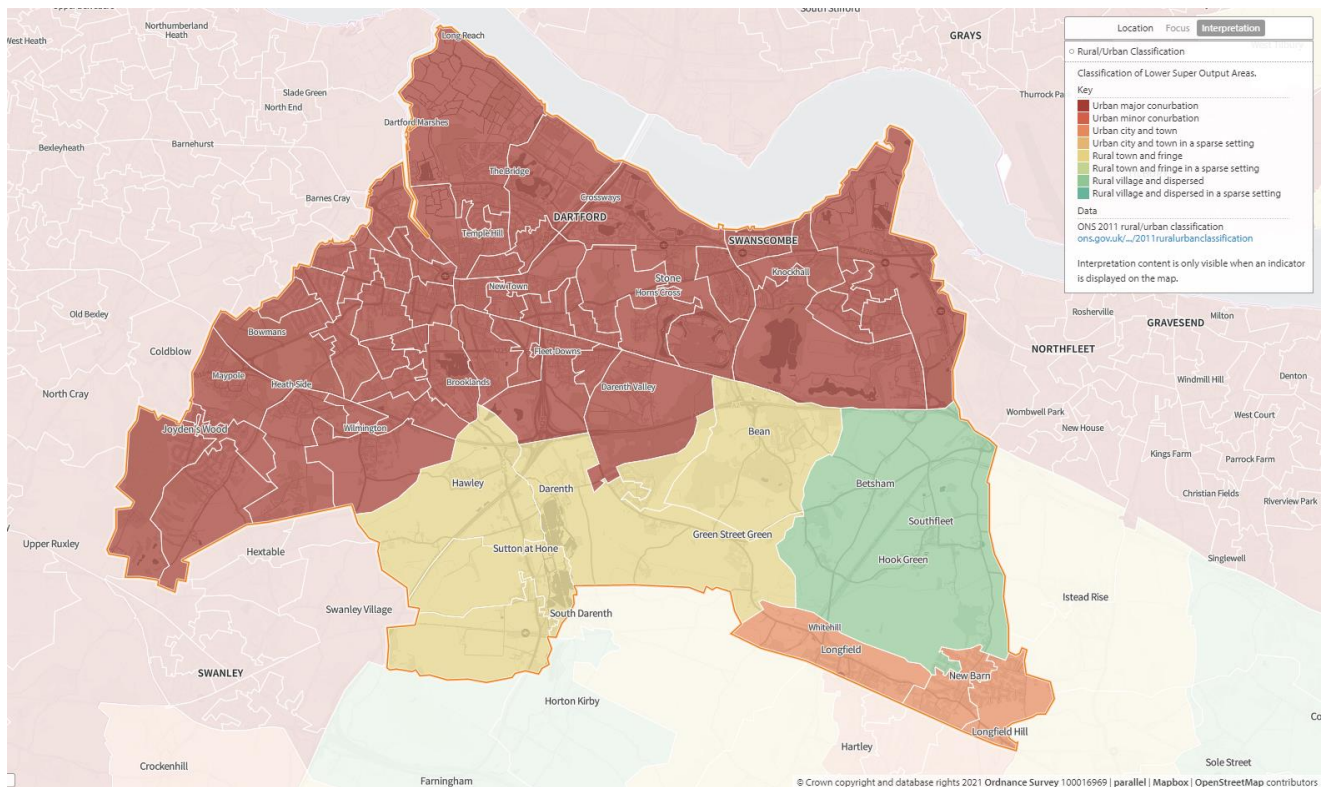


10 Dartford Borough Council Locality

1. Key Facts

Dartford is a local government district in the north-west of the county, bordering the London borough of Bexley to the west. Dartford covers an area of 72.8 square km, the smallest of all Kent districts. Map 52 shows that the majority of the district is urban with densely populated areas throughout the northern section. The south of the district is more rural comprised of small-medium villages. Dartford is the most densely populated district in Kent with 15.7 persons per hectare, the average in Kent is 4.5 (3).

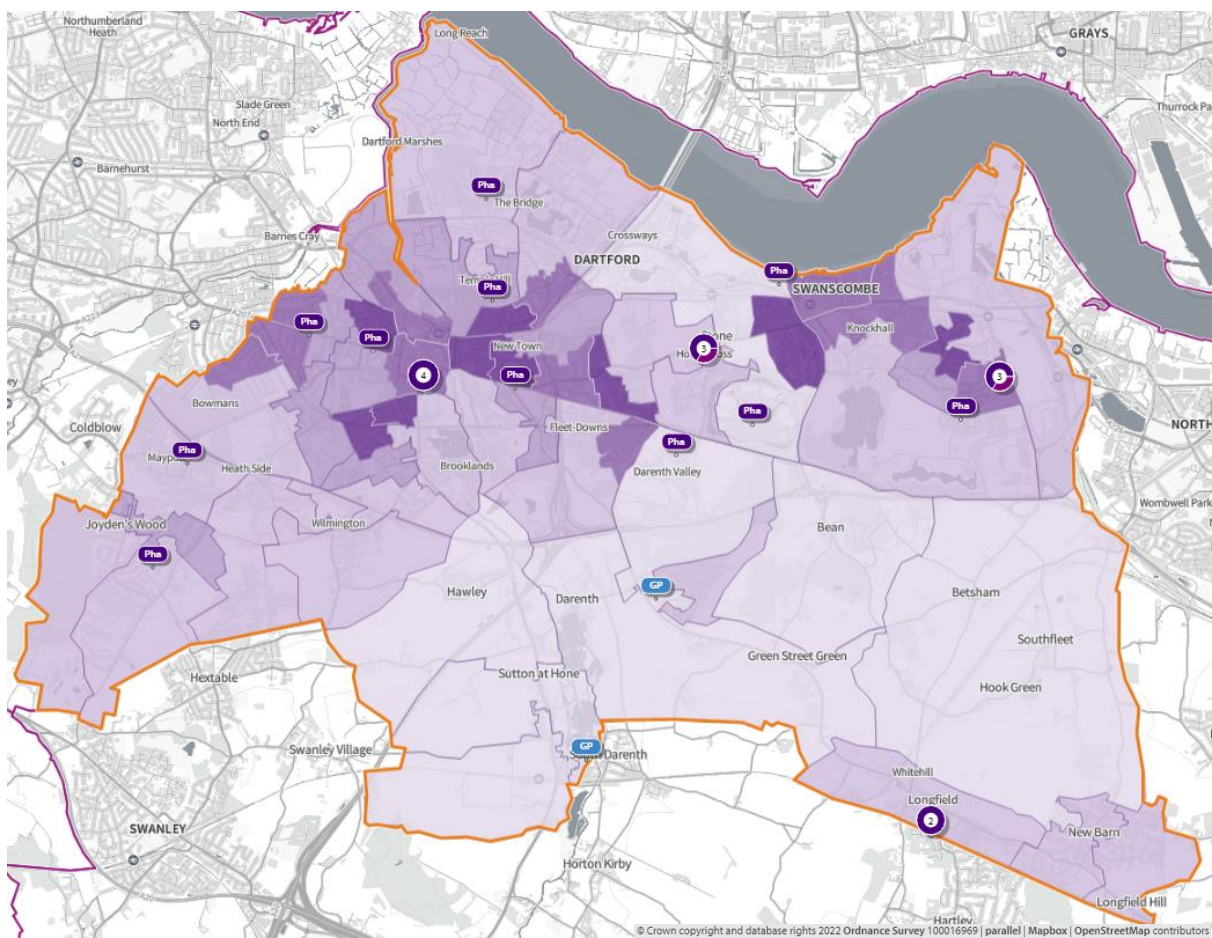
Map 52. Rural/urban classification of lower super output areas



Population

Map 53 below shows the distribution of the population in the locality. Dartford has a population of 114,051. The majority of the population is spread across the urban north of the district, however there are a number of high-density areas in this part of the district.

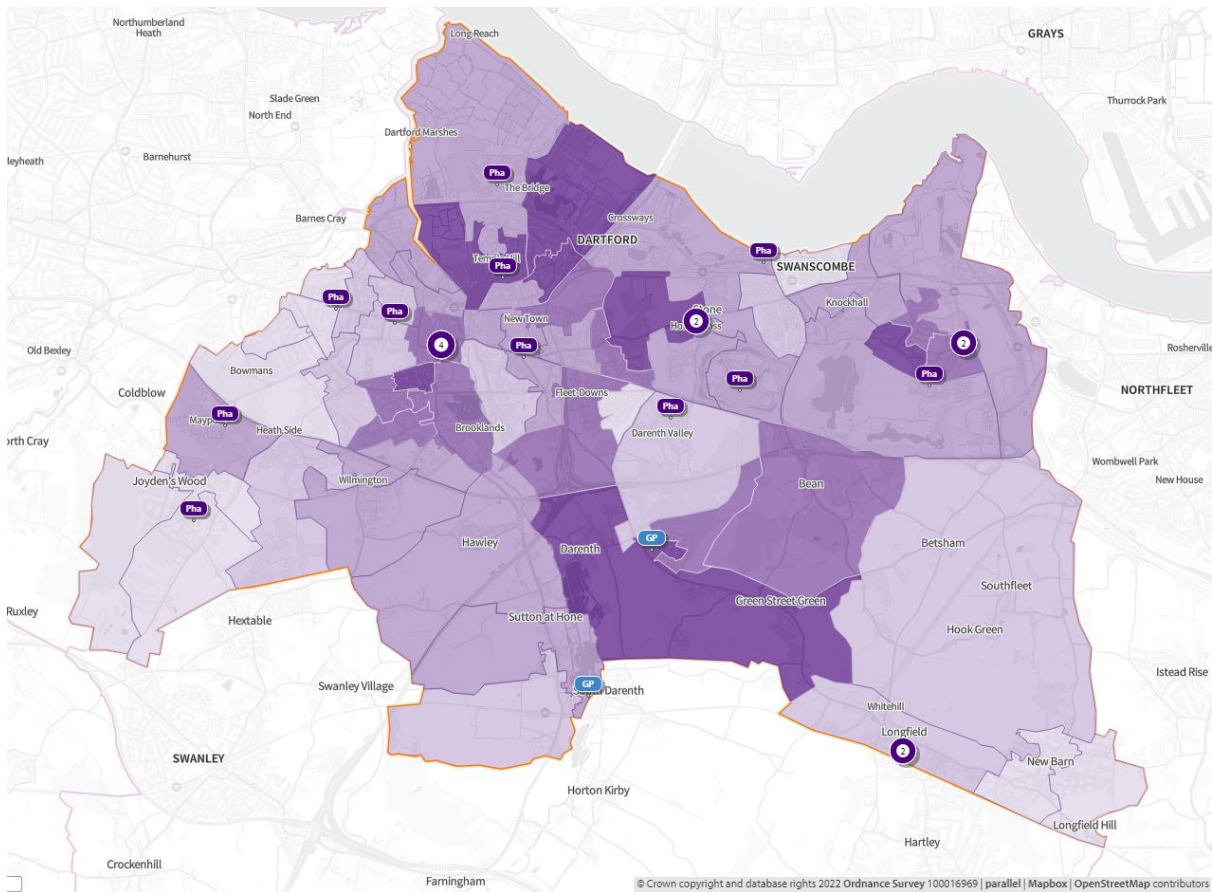
Map 53. Population density of lower super output areas overlaid with locations of pharmacies and dispensing doctors



Deprivation

Map 54 below shows the areas of deprivation in the Dartford locality. Dartford is ranked 6th out of Kent's 12 districts for deprivation, with significant areas of low deprivation contrasted with significant areas of high deprivation. One lower super output area (LSOA) on the edge of Dartford town is within the top 10% most deprived areas in England. Employment rates are similar to the Kent average⁽⁶³⁾ but educational attainment is higher than the Kent average and third highest of all Kent districts⁽⁶⁴⁾.

Map 54. Deprivation of lower super output areas overlaid with locations of pharmacies and dispensing doctors



Language

English is the main language for all people aged 16 or over in 93.4% of households in the district. 3.3% of households have no people with English as the main language⁽²⁾.

Home ownership

66% of houses are owned either outright (27%) or with a mortgage (39%). The average number of occupants per household is 2.4, the same as the Kent average ⁽²⁾.

Age Distribution

The average age of Dartford district residents is 37.5, lower than the Kent average of 41.4 and the lowest of all Kent districts. 13.9% of the population is over 65 (the lowest proportion of 65+ of all Kent districts) and 22.9% 0-15 ⁽²⁾. Life expectancy at birth is 77.9 for males and 82.2 for females ⁽⁴⁶⁾.

Economy

By industry, the top three employers in the Dartford district are wholesale and retail trade (19.5%), human health and social work activities (14.6%), and administrative and support service activities (11.4%) ⁽¹⁵⁾. Dartford has a much higher proportion of employees working in transportation and storage compared to the Kent average (10.6% vs 5.4%) ⁽¹⁵⁾.

Car ownership

19% of households in Dartford district do not have a car or van in the household ⁽¹³⁾.

Care Homes

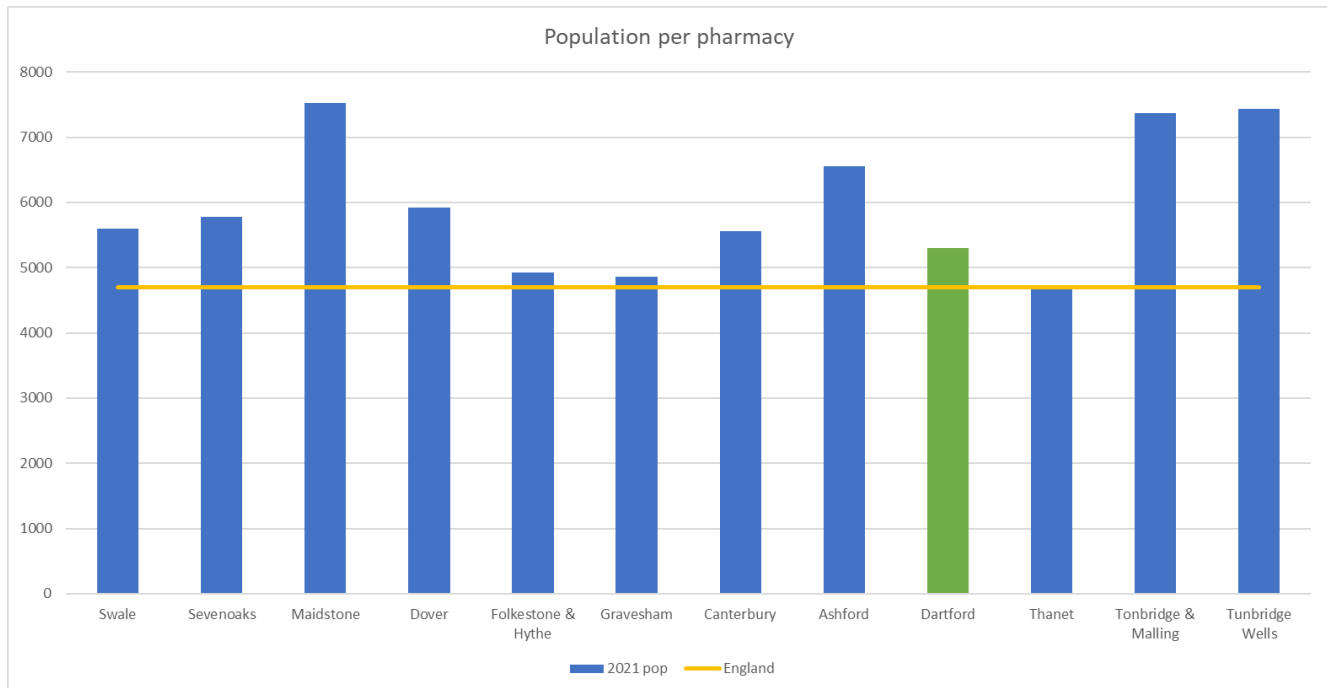
There are a considerable number of care homes in the Dartford locality. Patients who are looked after in a care home setting are often high users of medicines. However, because of the nature of their care, they rarely access pharmaceutical services individually, leaving this to be carried out by the care home staff. More recently care home organisations do not use local pharmacies for this service, favouring the large “hub” or “internet” pharmacies which specialise in this type of one-stop service. Therefore, there is not considered to be any relationship between the number of care homes and the need for local pharmaceutical services.

2. Necessary services: current provision within the locality

(All data presented in this section is for the financial year 2020/21 with the exception of lateral flow devices data which covers the 4 months from April 2021 to July 2021)

There are 20 Community pharmacies providing dispensing services in the Dartford locality. That is one 1 pharmacy per 5,300 people slightly higher than the England figure of 1 per 4,700. If 4 dispensing practices are included, then it 1 dispensary per 4,700 people. Figure 30 below shows how this compares with the other localities of Kent.

Figure 30. Number of people per pharmacy in each locality



18 of the pharmacies open at least one hour after 17:00 on weekdays. 17 are open on Saturdays and 4 open Saturday and Sunday. The weekly opening hours range from 42.5 to 96, with the average opening hours being 55.5 hours each week.

In addition, there are 4 dispensing GP practices and 1 dispensing compliance contractor in the Dartford locality.

The dispensing GP practices in the Dartford locality are:

- Devon Road Surgery, Dartford DA4 9AB
- Swanscombe Health Centre DA10 0BF
- Elmdene Surgery, Greenhithe DA9 9BA
- Bennett Way Surgery, Darenth DA2 7JT

The facts below indicate that the majority of prescriptions generated in the locality are dispensed in the locality. There are 26% of prescriptions generated in the area that are dispensed in neighbouring areas and 23% that are generated outside the locality and dispensed by Dartford locality community pharmacies⁽¹⁾. This is a greater proportion than the other Kent localities.

- 1,798 outside prescribers dispense in Dartford
 - 23% of all items dispensed in Dartford
- 15 prescribers in Dartford

- 77% of all items dispensed in Dartford
- 32 dispensers in Dartford
 - 74% of all items prescribed
- 1,302 dispensers outside of Dartford
 - 26% of all items prescribed in Dartford

Pharmacy locality: Maps 1 and 2 above show the locality of the community pharmacies and GP dispensing practices.

The tables below show the core and supplementary hours of each pharmacy ⁽⁶⁵⁾

Table 30. Opening times for all pharmacies

Pharmacy	Total core weekly hours	Total supplementary weekly hours	Total weekly hours	Max. hours open after 5pm at least 1 day/week	Saturday hours	Sunday Hours
Boots the Chemists	40	56	96	7	15	6
Asda Pharmacy	40	47	87	5	13.5	6
Lloydspharmacy (in Sainsbury)	40	43	83	4	12	6
Boots the Chemists	40	23	63	1	9.5	6
The Brent Pharmacy	40	20	60	3	8	0
S & S Chopra	40	18.50	58.50	2	6	0
LloydsPharmacy	40	16	56	1	8.5	0
Ackers Chemists	40	14	54	1	9	0
Paydens Pharmacy	40	14	54	2	4	0
Delmergate Ltd	42.50	11	53.50	1	8.50	0
Hodgson Pharmacy	40	13	53	2	8	0

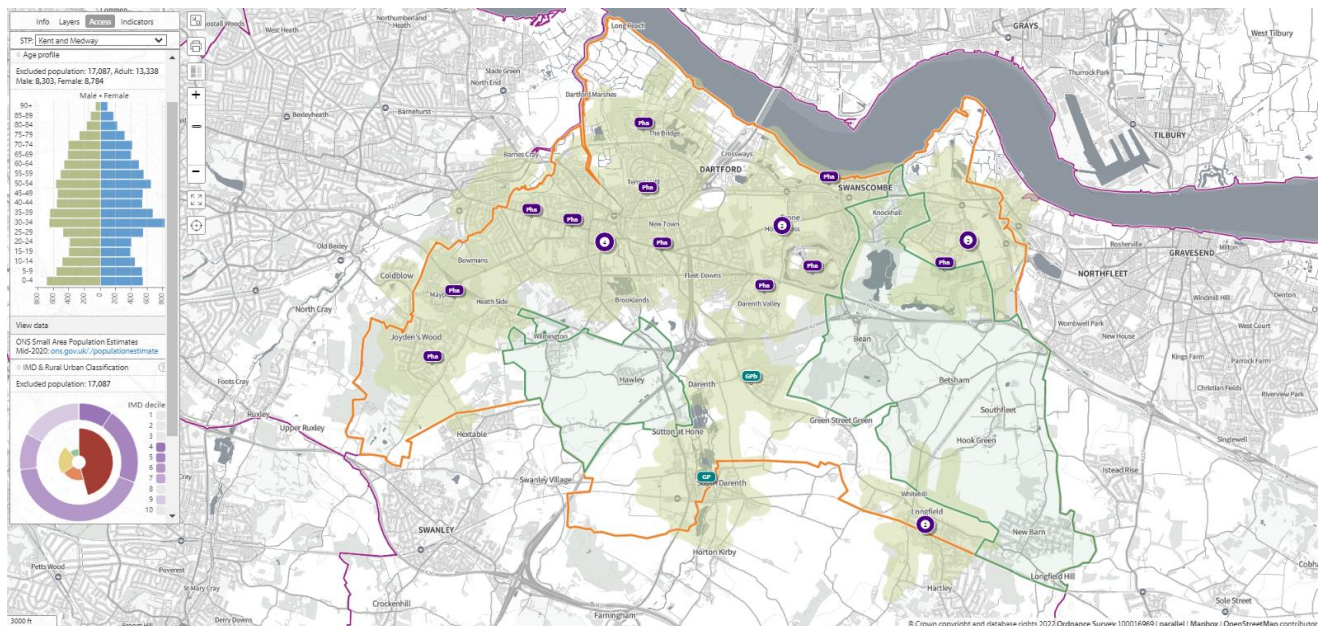
Table 30 continued

Pharmacy	Total core weekly hours	Total supplementary weekly hours	Total weekly hours	Max. hours open after 5pm at least 1 day/week	Saturday hours	Sunday Hours
Delmergate Ltd	40.5	11	51.5	1	4	0
McQueen's Pharmacy	40	11.5	51.5	1.5	4	0
Joydens Wood Pharmacy	40	10.5	50.5	1.5	8	0
Daysol Pharmacy	40	10	50	1	5	0
West Hill Pharmacy	40	10	50	1.5	0	0
M D Moore Pharmacy	40	9	49	1	4	0
MCT	40	8.75	48.75	1.25	0	0
Swan Valley Pharmacy	40	7.5	47.5	2.5	0	0
Stone Pharmacy	40	6.5	46.5	1.5	4	0
Homestyle Positive			42.5	0	0	0

Travel times

In **map 55**, below, the green shaded areas are within a **20-minute walk** of a community pharmacy/dispensing GP practice. 85.5% of people are not within a 20-minute walk. 20% of 65+ population is not within a 20-minute walk of a community pharmacy/dispensing GP.

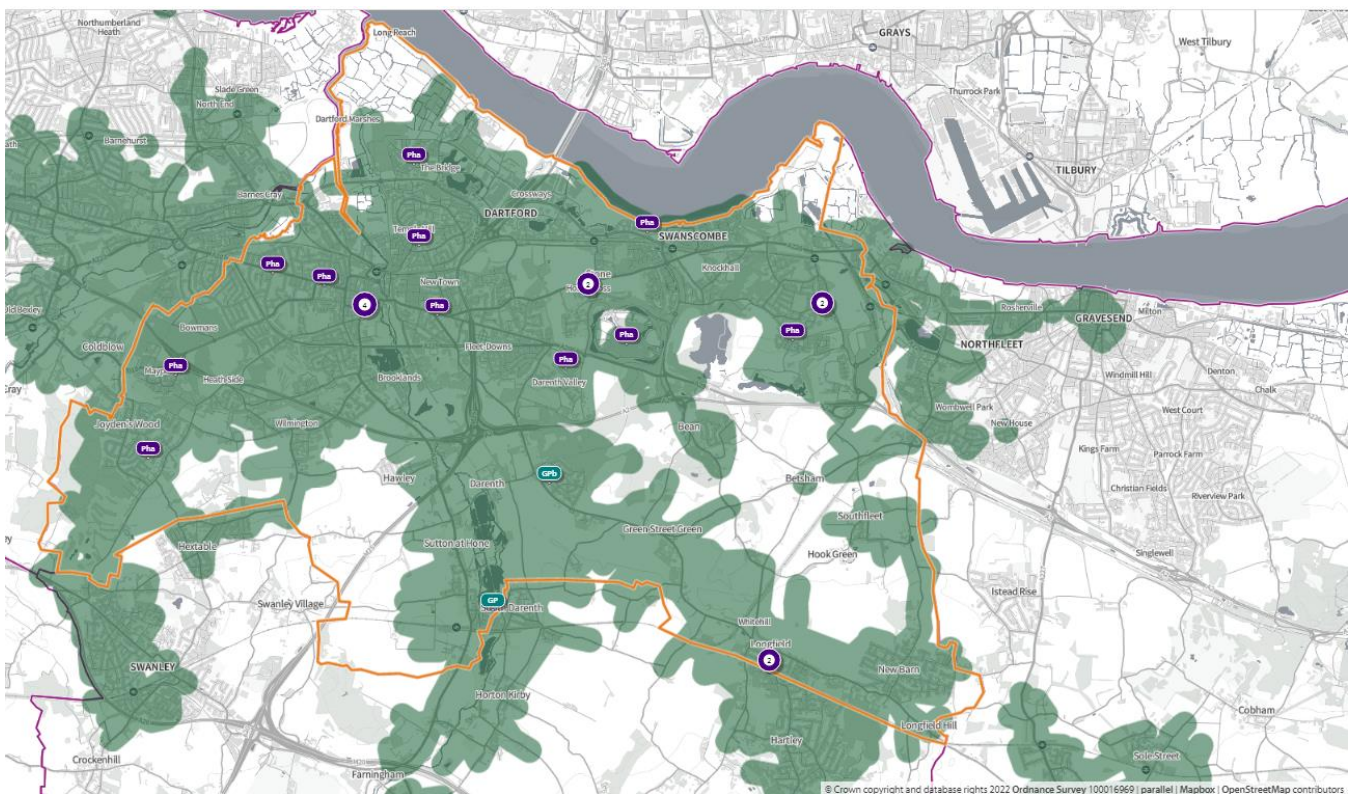
Map 55. Locations of community pharmacies/dispensing GPs and lower super output areas not within a 20-minute walk



Public Transport 20 minutes

In map 56, below, the green shaded areas are within 20-minutes by public transport of a community pharmacy/dispensing GP practice. The entire population (by LSOA) is within 20-minutes by public transport of a community pharmacy/dispensing GP practice.

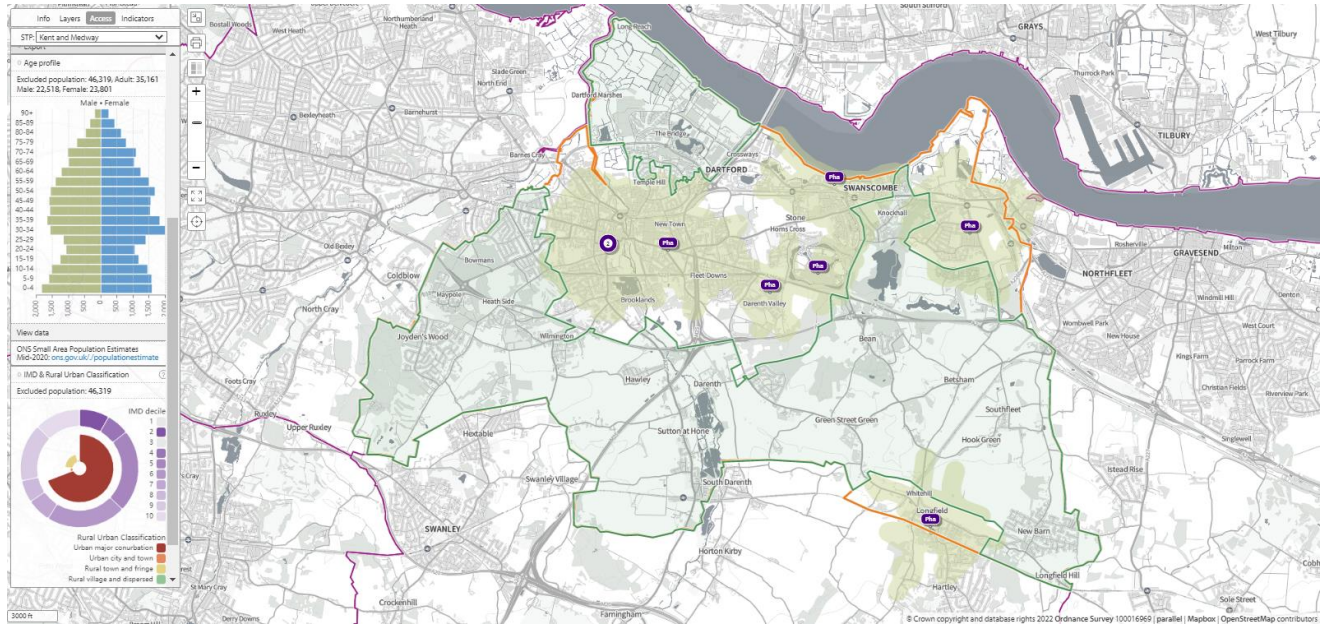
Map 56. Locations of community pharmacies/dispensing GPs and areas within 20-minutes by public transport on weekday mornings



After 7 pm weekdays walking

In map 57, below, the olive-green shaded areas are within a 20-minute walk of a community pharmacy that opens until at least 7pm on weekdays. 41,426 (36.3%) people are not within a 20-minute walk of a community pharmacy that opens until at least 7pm on weekdays. 44.2% (7,023) of 65+ population is not within a 20-minute walk of a community pharmacy that opens until at least 7pm on weekdays.

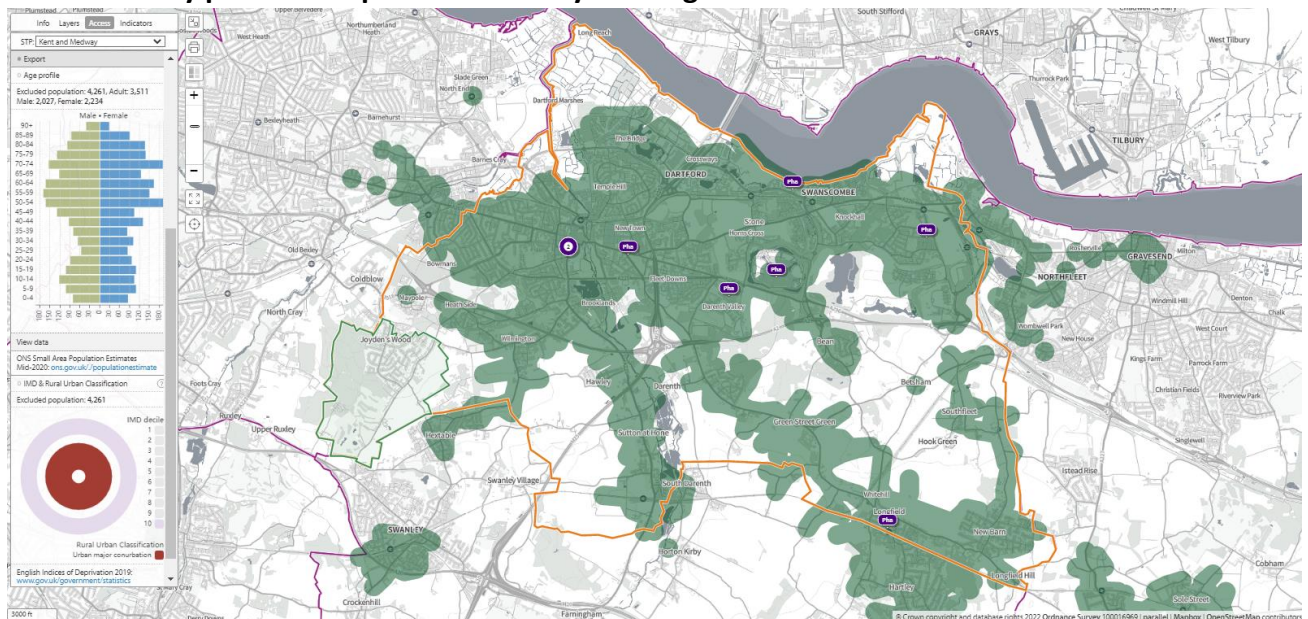
Map 57. Locations of community pharmacies open until at least 7pm and lower super output areas not within a 20-minute walk



After 7pm weekdays public transport

In **map 58**, below, the green shaded areas are within 20-minutes by public transport of a community pharmacy that opens past 7pm on weekdays. 4,261 (3.7%) people are not within 20-minutes by public transport that opens past 7pm on weekdays. 8.4% (1,336) of 65+ population is not within 20 minutes by public transport of a community pharmacy that opens past 7pm on weekdays.

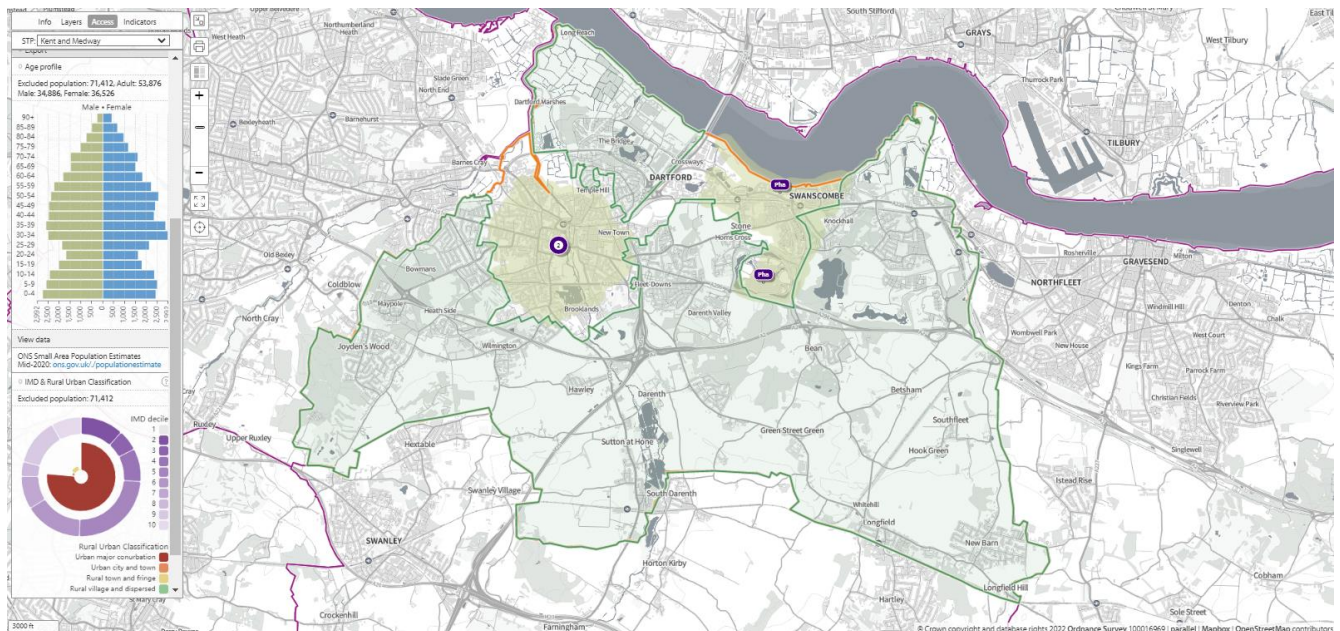
Map 58. Locations of community pharmacies open until at least 7pm on weekdays and areas within 20-minutes by public transport on weekday evenings



Access on Sundays

In **map 59**, below, the olive-green shaded areas are within a 20-minute walk of a community pharmacy that opens on Sundays. 69.7% (79,505) of the population is not within a 20-minute walk of a community pharmacy that opens on Sundays. 69.7% (12,370) of 65+ population is not within a 20-minute walk of a community pharmacy that opens on Sundays.

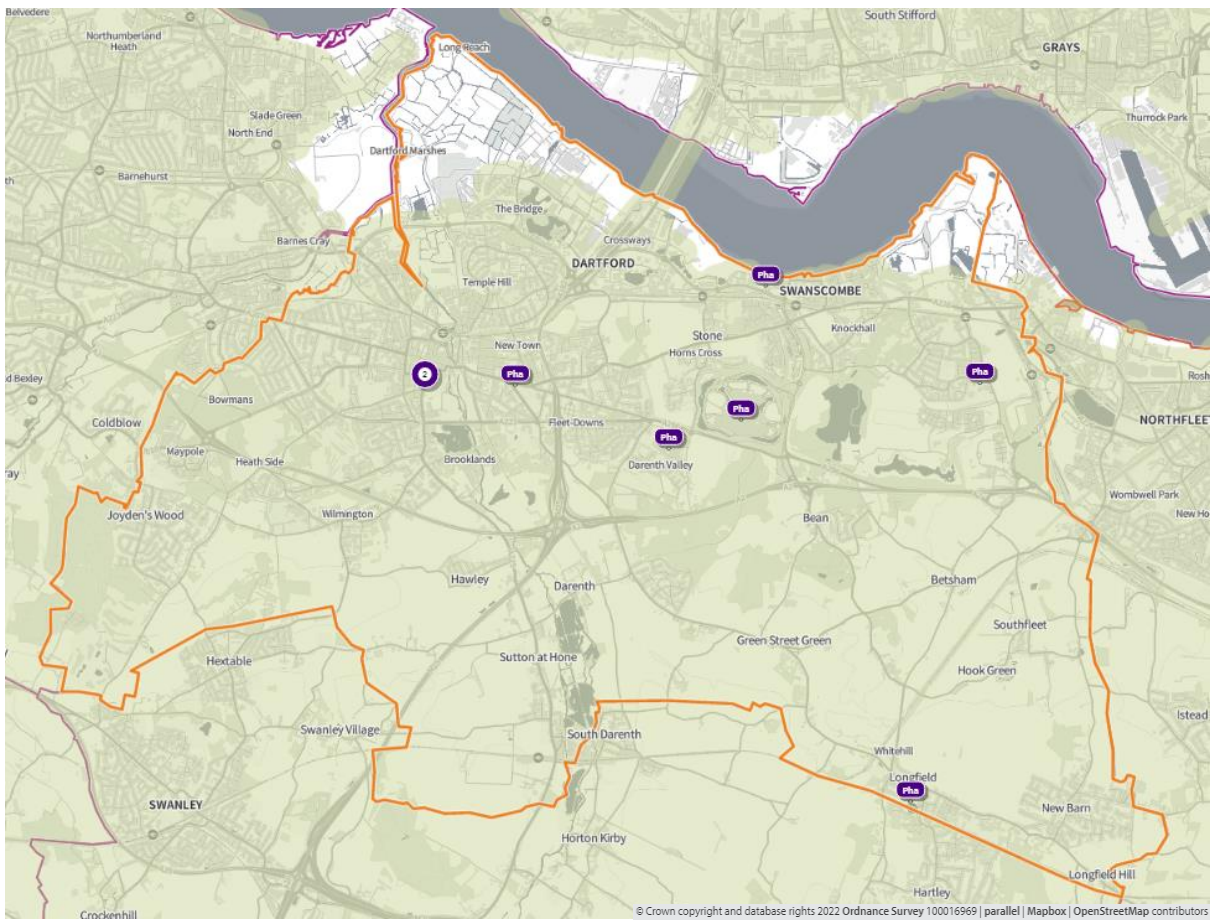
Map 59. Locations of community pharmacies open on Sundays and lower super output areas not within a 20-minute walk



In **map 60** below, access during **core opening hours, Saturdays and Sundays** is shown. The olive-green shaded areas are within a **20-minute drive** of a community pharmacy/dispensing GP practice. The entire population is within a 20-minute drive.

In **map 61** below, the green shaded areas are within **20-minutes by car** of a community pharmacy that opens **until at least 7pm on weekdays**. The entire population is within a 20-minute drive.

Map 61. Locations of community pharmacies open until at least 7pm on weekdays and areas within 20-minutes by car



3. Necessary services: current provision outside the localities area ⁽¹⁾

The information below indicates the number of prescriptions dispensed in and outside the locality.

- 1.89 million items prescribed in Dartford
 - 1.4 million items dispensed in Dartford
 - 1.3 million (93%) via Electronic Prescription Service
 - 490,000 (26%) dispensed outside of the district (approximately 50% is due to prescriptions from branch surgeries outside of Dartford)
 - 240,000 in Sevenoaks
 - 102,183 in Bexley
 - 75,000 in Gravesham

- 1.81 million items dispensed in Dartford
 - 1.74 million items dispensed by community pharmacies in Dartford
 - 68,000 dispensed by 11 GP practices:
 - Swanscombe Health Centre – 28,068
 - Devon Road Surgery – 18,875
 - 410,000 items prescribed outside borough i.e. more coming in than going out

Some residents choose to access contractors outside both the locality and the Health and Wellbeing Board's area in order to access services:

- Offered by dispensing appliance contractors
- Offered by distance selling pharmacies
- Which are located near to where they work, shop or visit for leisure or other purposes.

Taking into account this choice of pharmacy outside of the locality, the majority of residents can access a pharmacy within the locality.

4. Other relevant services: current provision

The following advanced services were delivered by pharmacies in the Dartford locality in 2020/21.

Table 31. Number of pharmacies providing advanced services

Advanced service name	No. of pharmacies
New Medicine Service	17
Appliance Use Review	1
Hypertension Service [‡]	17
Stoma Appliance Customisation	2
Community Pharmacist Consultation Service (CPCS) [‡]	18
Hepatitis C Antibody Testing Service	2
Seasonal Influenza Vaccination Advances Service	19
Covid Vaccination Service*	1
Covid Home Delivery Service*	15
Covid lateral flow device distribution*	22

*Specific to the Covid-19 pandemic

[‡]Services introduced during the year of study

Please note that three services were specific to the Covid-19 pandemic (Covid vaccination, homedelivery and lateral flow device distribution services) and that others were new services (CPCS, Hypertension service) introduced within the year. There is, however, good participation and early adoption of new services from pharmacies in this locality.

5. Other NHS services

The Strategic Health Asset Planning and Evaluation (SHAPE) web application provides the following information:

- Devon Road Surgery opens until 7.30pm on Mondays, Tuesdays and Thursdays
- Downs Way Medical Practice: Summerhouse Surgery is open until 8.30 pm on Tuesdays
- Redwood Practice is open 9am-12pm on Saturdays
- Swanscombe and Bean Partnership: Bean Village Surgery is open until 7.30pm on Wednesdays
- Temple Hill Surgery is open 8am-8pm on Mondays and Tuesdays, and 7am-6.30pm on Wednesdays and Thursdays
- The orchard Practice is open 8am-12pm on Saturdays

There is an Accident and Emergency department situated in the Darent Valley Hospital at Pembury. It is open 24 hours a day every day of the year.

There are also drug and alcohol services, Kent and Medway NHS Hospital Trusts and Kent and Medway NHS and Social Care Partnership Trust and Kent Community Health NHS Foundation Trust with services that generate prescriptions that are dispensed by community pharmacies in this locality.

The number of prescriptions from these services is shown below:

- 13 pharmacies dispensed a total of 2,341 items (mean = 180, range = 1-902) from drug and alcohol services
- 20 pharmacies dispensed a total of 1,455 items from Kent and Medway NHS and Social Care Partnership Trust (secondary mental health services)
- 15 pharmacies dispensed a total of 135 items from KCHFT (paediatrics)
- 20 pharmacies and 2 GP practices dispensed a total of 4,403 items (mean = 200, range = 1-1,190) from Kent and Medway hospitals

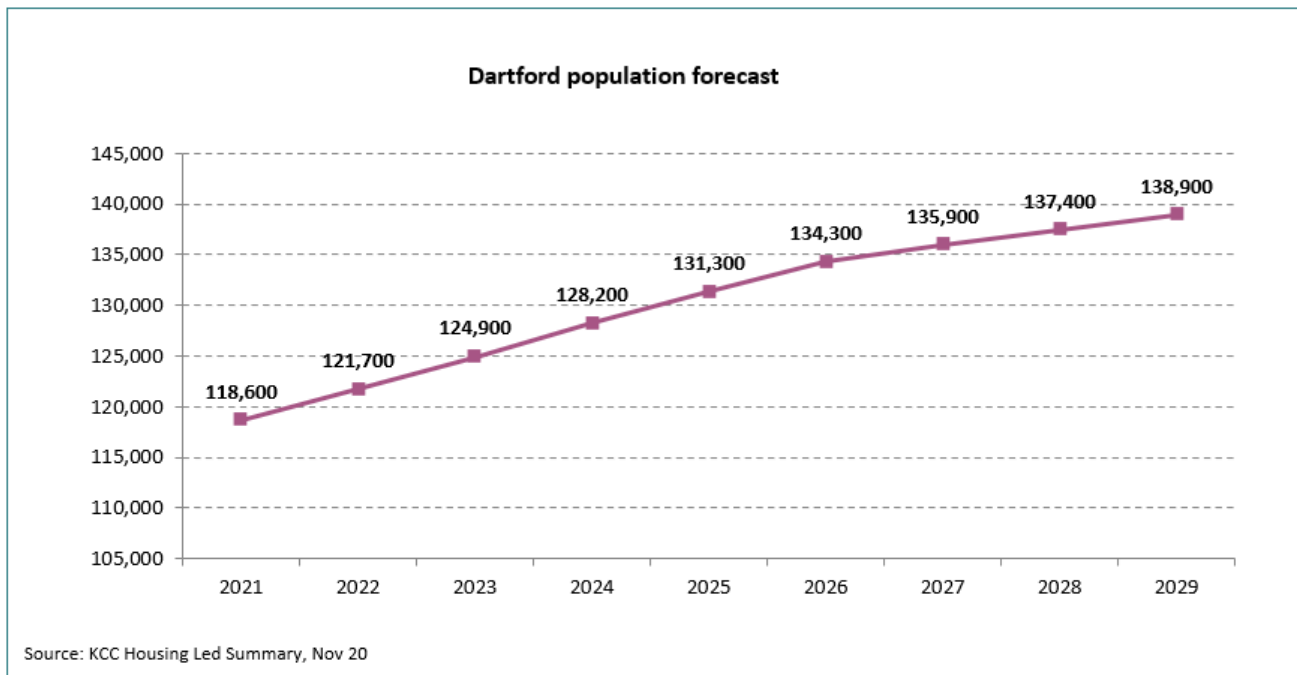
6. Choice with regard to obtaining pharmaceutical; services

As can be seen from sections 2 and 3, those living within the locality and registered with one of the GP practices generally choose to access one of the pharmacies in the locality in order to have their prescriptions dispensed or, if eligible, to be dispensed to by their practice. Those that look outside the locality usually do so either to access a neighbouring pharmacy, or a dispensing appliance contractor or distance selling premises outside of the Health and Wellbeing Board's area.

7. Developments

Most recently, the highest rates of population growth in the county have been in Dartford and the trend is forecast to continue (see graph below). KCC's housing-led population forecast projects that the population of Dartford will increase by 10% to 131,300 by 2025. This is an increase of approximately 1,200 people per pharmacy from 2020.

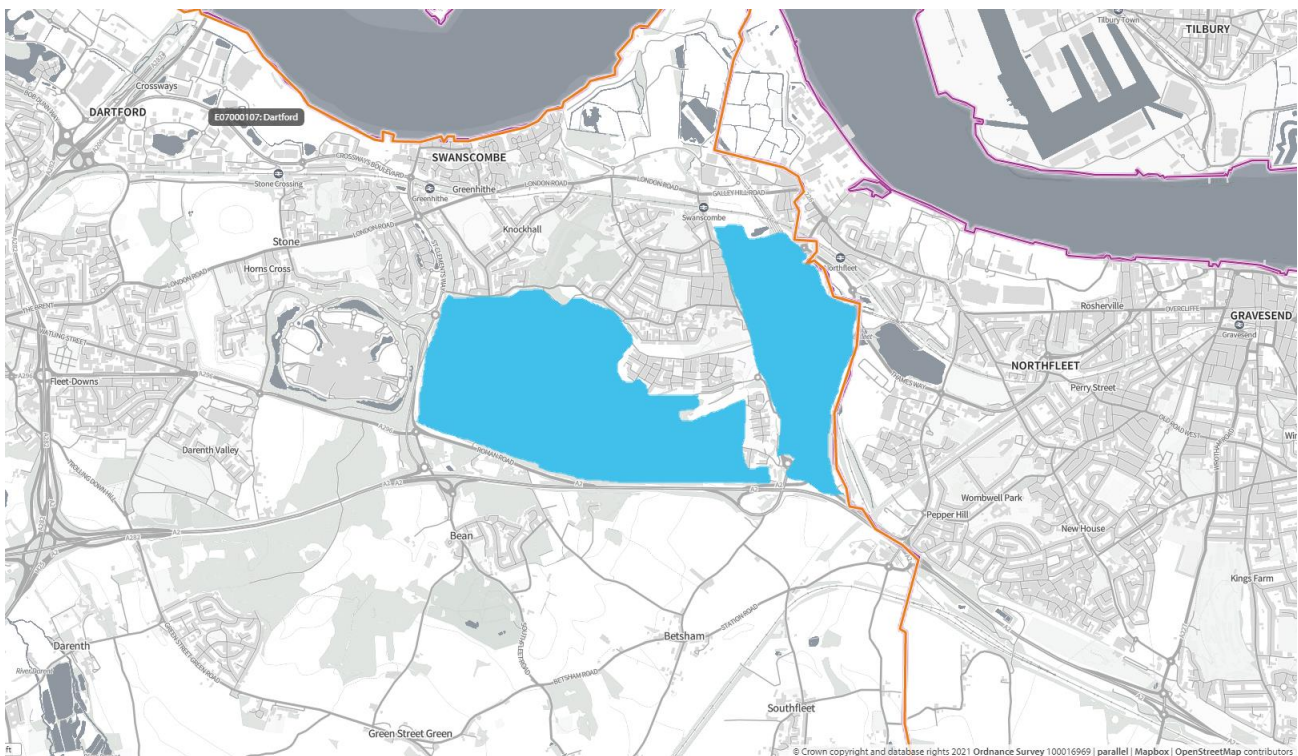
Figure 31 Dartford Population forecast



 **1 pharmacy per 6,945 people in 2025**

In **map 62**, below, in the two shaded areas, the Dartford Local Plan produced by Dartford Borough Council states between 2020/21 and 2029/2030 5676 new homes are planned for these 2 areas - 75% of all homes planned in Dartford in that period. Approx. 3000 planned to be completed by 2026 i.e. within the lifespan of this PNA. A number of smaller developments are planned across the borough but are very small in comparison – the majority with 5-9 proposed new dwellings.

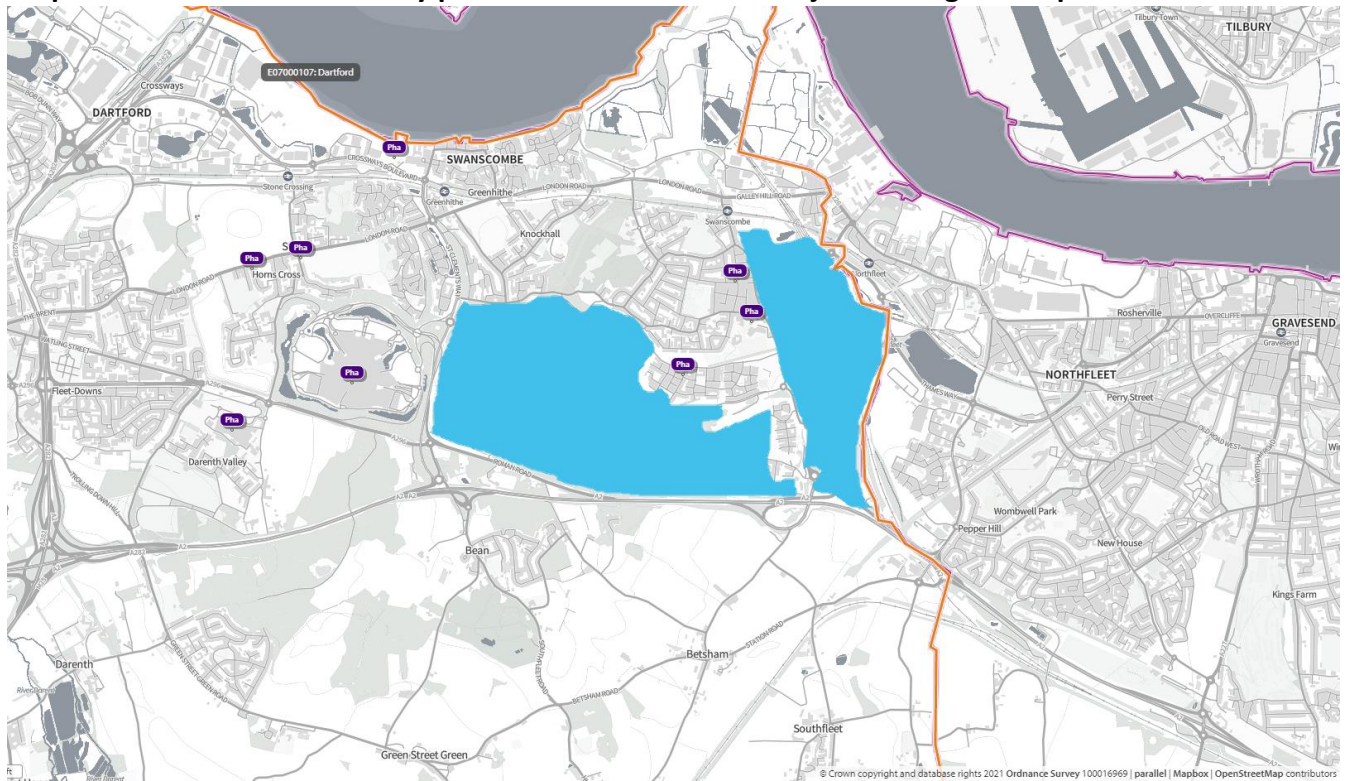
Map 62. Location of major housing developments



In **map 63**, below, by 2029/30 Approximately 14,000 (7,800 by 2026) new inhabitants to be served by 4/5 existing pharmacies.

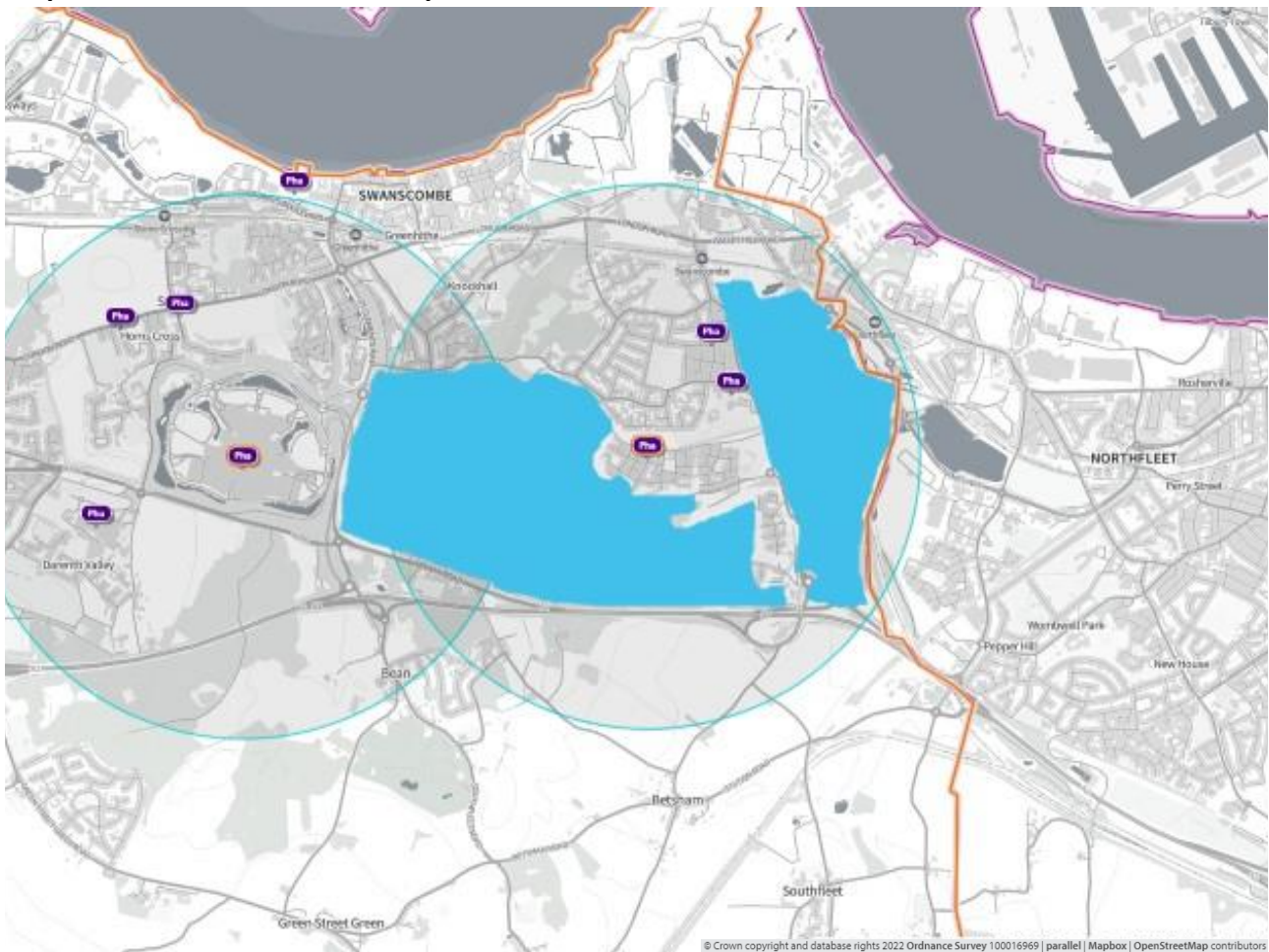
Also, a dispensing GP at Swanscombe Health Centre which houses Swan Valley Pharmacy.

Map 63. Location of community pharmacies and areas of major housing developments



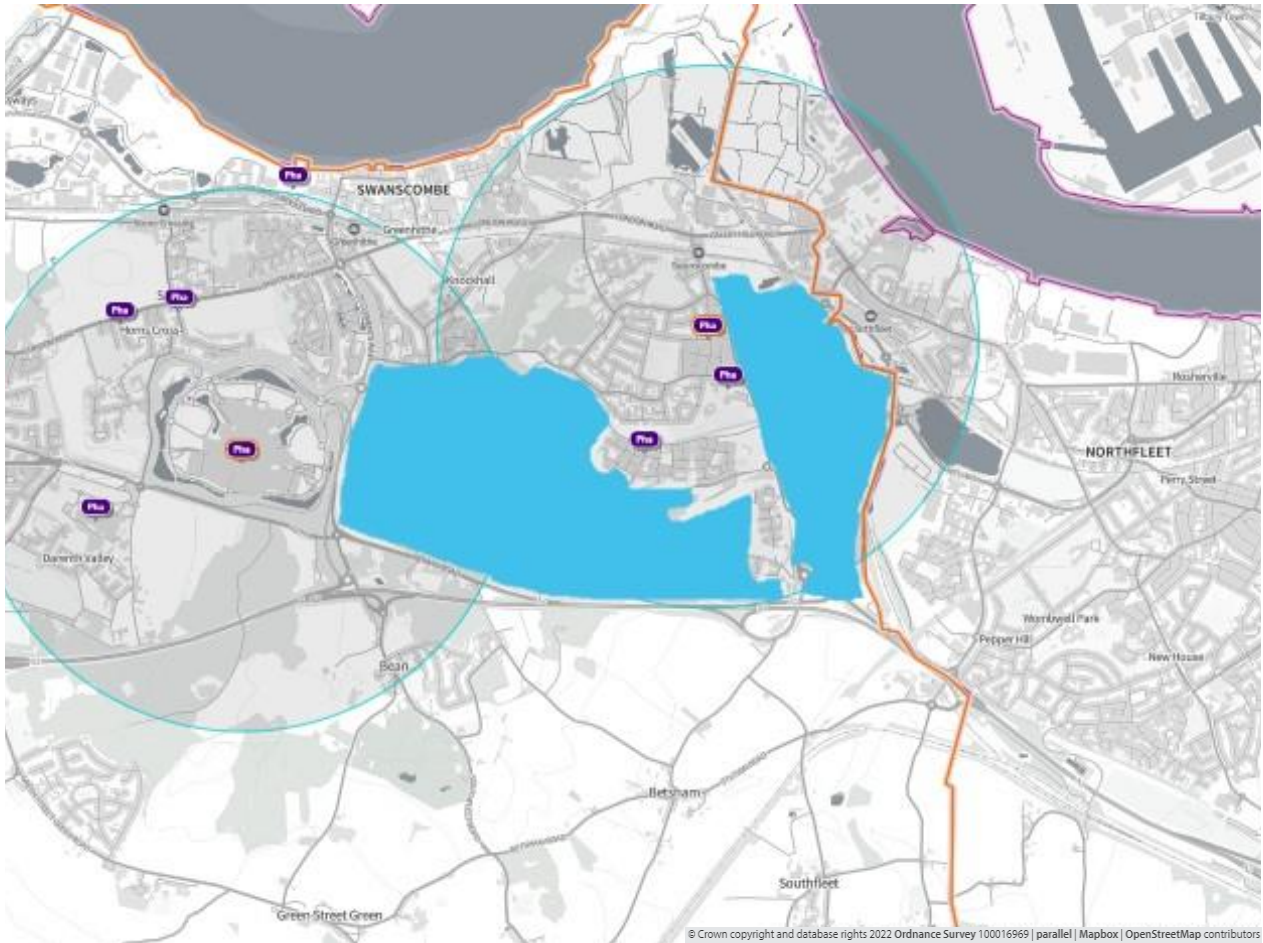
In **map 64**, below, A one mile radius from 2 pharmacies covers the entirety of the proposed developments.

Map 64. One mile radius from 2 pharmacies



In **map 65**, below, A one mile radius from pharmacies that open at least one day at the weekend covers the vast majority of the proposed developments.

Map 65. One mile radius from pharmacies that open at least one day at the weekend



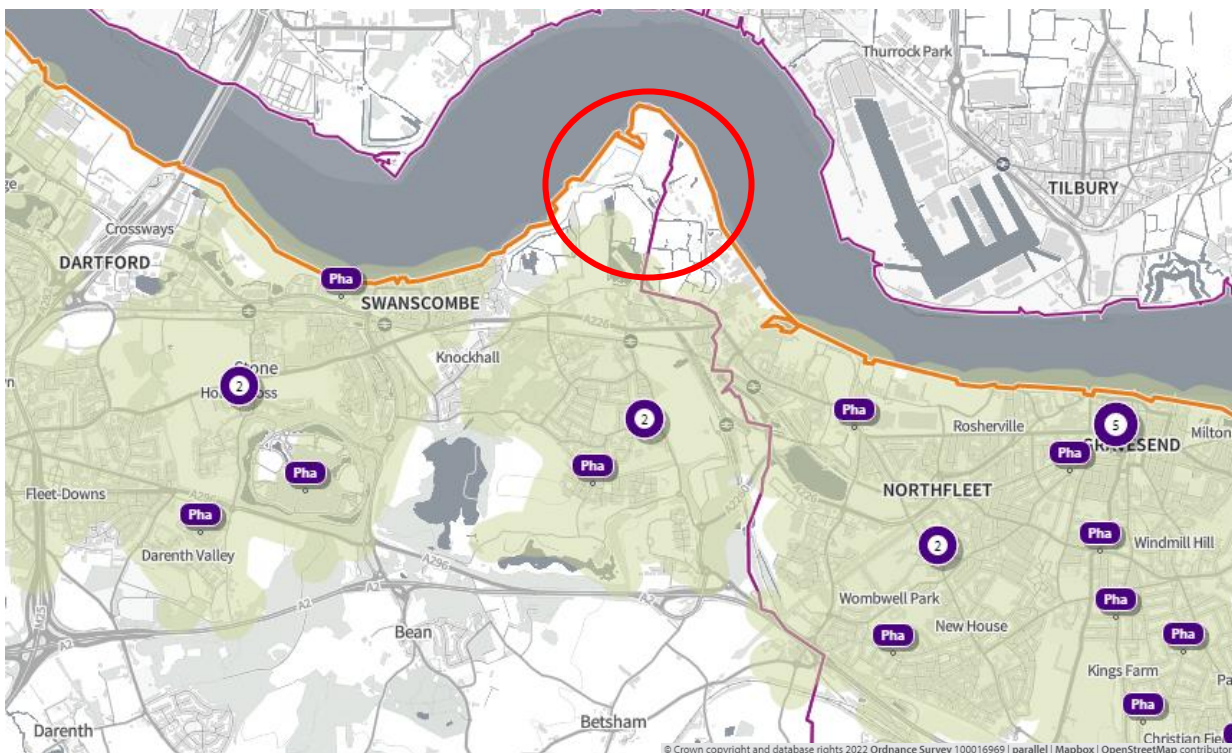
Necessary services: - Gaps in provision

The London Resort ⁽⁵⁸⁾

The construction of the London Resort will require a large workforce; up to 5,000 construction workers are expected on-site in the peak year of Gate One construction (2023). Of these, however, up to half are expected to live too far from the site to commute daily and will seek temporary accommodation close to the site. There are three preliminary options for the London Resort strategy: rely on existing accommodation options; purchase or rent a decommissioned cruise ship (likely with 1,000 to 2,000 room capacity); and/or locate mobile homes (500 – 700 rooms) on-site. There is estimated to be up to 3,100 construction workers seeking temporary accommodation in the area in 2023. *Please note at the time of writing (April 2022) a new planning submission has been made for the London Resort development so the time scales stated may alter.*

Map 67 below shows the proposed location of The London Resort. The green shaded areas are within a 20- minute walk of the pharmacies displayed on the map. Construction workers living on-site will be within a 20-minute walk of the nearest pharmacy. Two pharmacies in the Dartford locality are within a 20-minute walk of the site. Neither of these pharmacies responded to the contractor’s questionnaire so it is unknown whether these pharmacies feel they have capacity to meet increased demand for services or medicines.

Map 67. Location of community pharmacies, proposed location of The London Resort and areas within a 20 minute walk of a community pharmacy



Lloyds Pharmacy (FP204) has indicated that it does not have capacity for increased demand for services or medicines. However, there are another 7 pharmacies within a 1-mile radius of Lloyds Pharmacy (FP204) and no gaps in provision of necessary services have been identified.

8. Improvements or better access: Gaps in provision

No improvements have been identified.