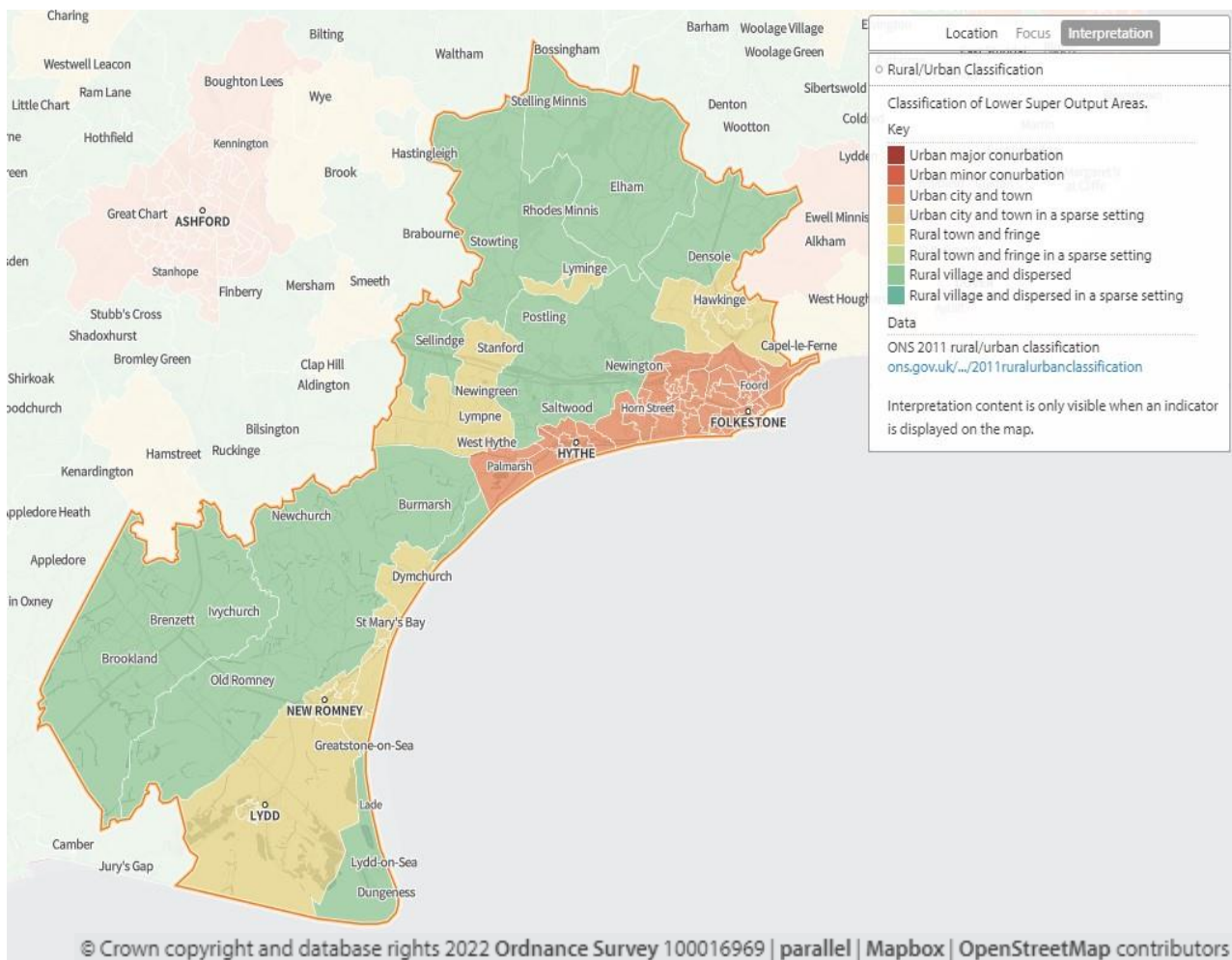


## 12 Folkestone and Hythe Locality

### 1. Key Facts

Folkestone and Hythe is a local government district in the south-east of the county. It covers an area of 356.6 square km. Most of the population live in the coastal towns of Hythe and Folkestone. The north of the district consists of villages situated amongst farmland of the North Downs. The south features a coastal expanse of lower lying reclaimed land including Romney Marsh.

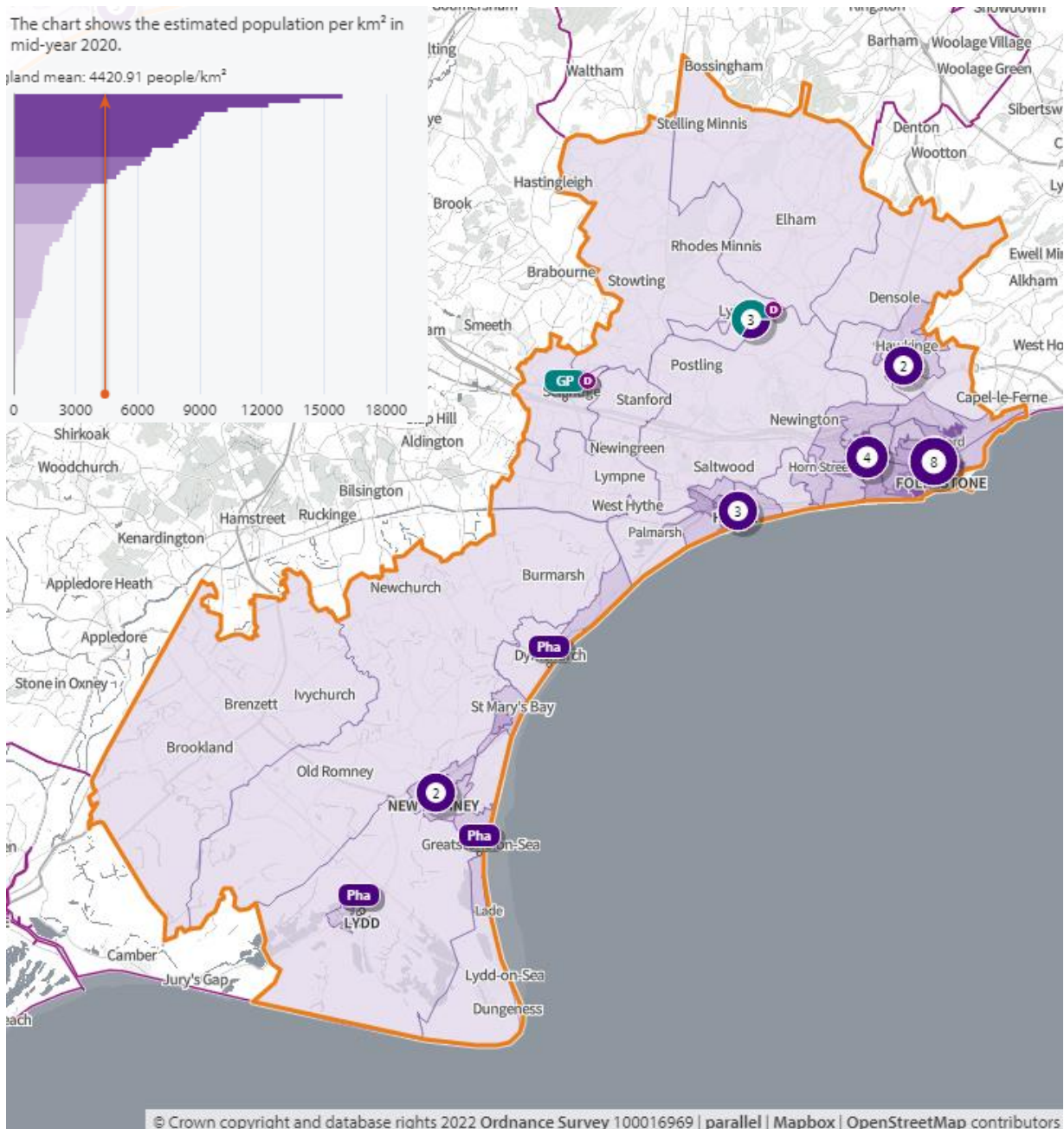
### Map 86. Rural/urban classification of lower super output areas



## Population

**Map 87** shows the distribution of the population in the locality. The population density is greatest in the coastal towns of Folkestone, Hythe, Dymchurch and New Romney. Much of the locality is rural in nature. Sheep farming being the predominant form of agriculture in both the downs and marsh areas.

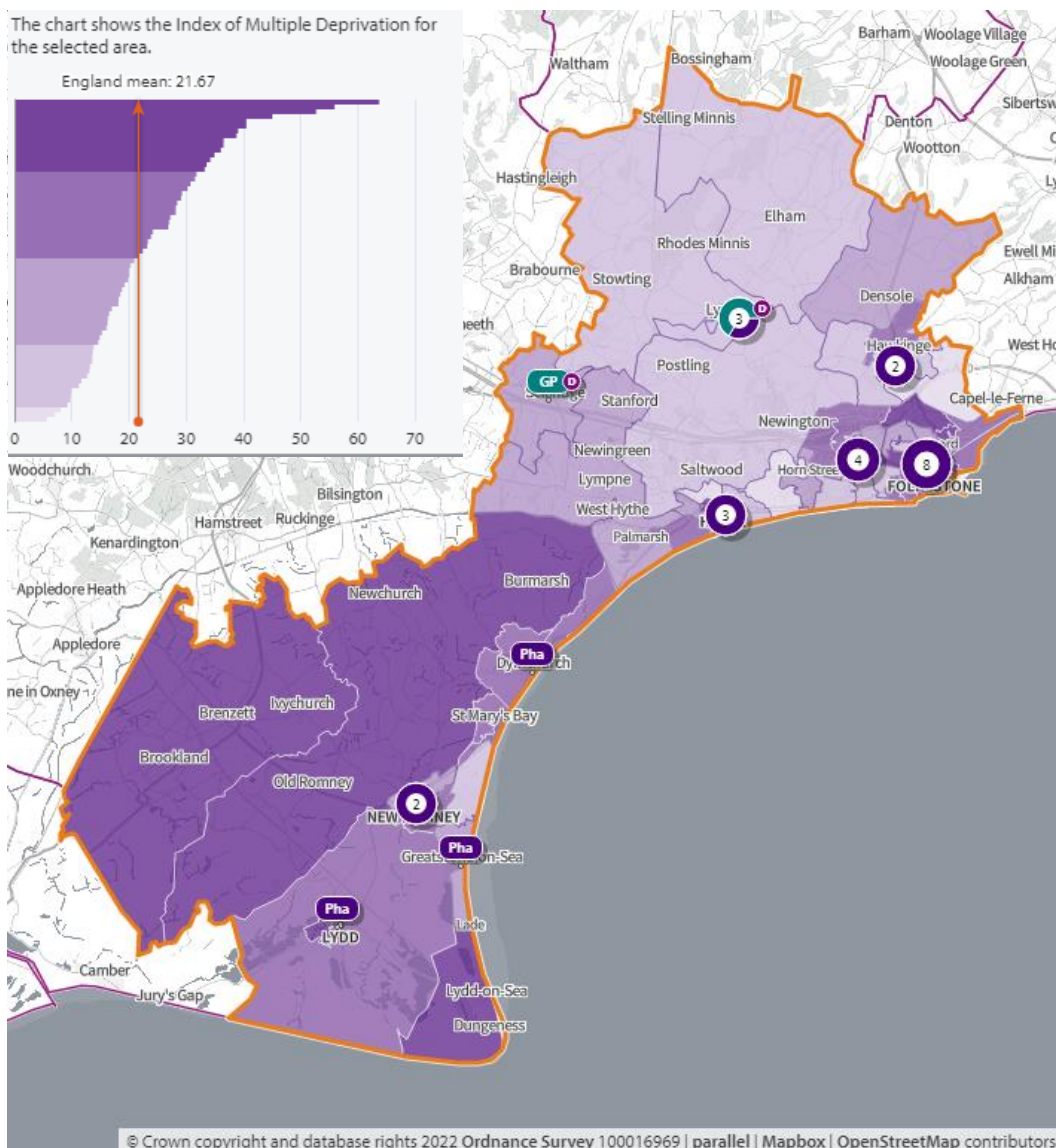
### Map 87. Population density of lower super output areas overlaid with locations of pharmacies and dispensing doctors



## Deprivation

**Map 88** shows the areas of high deprivation in the Folkestone and Hythe District locality. In economic terms, Folkestone and Hythe is the third most deprived area in Kent, after Thanet and Swale. It has a high rate of unemployment <sup>(63)</sup>; poor educational attainment figures <sup>(64)</sup>; and with most businesses being small operations. The major source of economy is, however, tourism.

### Map 88. Deprivation of lower super output areas overlaid with locations of pharmacies and dispensing doctors



## Language

English is the main language for all people aged 16 or over in 95.1% of households in the district. 2.8% of households have no people with English as the main language <sup>(2)</sup>.

## Home ownership

64% of houses are owned either outright (35%) or with a mortgage (29%). The average number of occupants per household is 2.2, lower than the Kent average of 2.4 <sup>(2)</sup>.

## Age distribution

The average age of Folkestone and Hythe district residents is 44.6, higher than the Kent average of 41.4 and the highest of all Kent districts <sup>(2)</sup>. 25% of the population is over 65 (the highest proportion of all Kent districts) and 16.8% 0-15 <sup>(2)</sup>. Life expectancy at birth is 78.1 for males and 82.6 for females <sup>(46)</sup>.

## Economy

By industry, the top three employers in the Folkestone and Hythe district are wholesale and retail trade (13.3%), human health and social work activities (13.3%), and administrative and support service activities (10.7%) <sup>(15)</sup>. By industrial grouping, tourism is the highest employer – 16% of employee jobs are in tourism compared to the Kent average of 10.5% <sup>(15)</sup>. Folkestone and Hythe district has the highest proportion of jobs in tourism of all Kent districts <sup>(15)</sup>.

## Car ownership

24% of households in Folkestone and Hythe district do not have a car or van in the household <sup>(13)</sup>.

## Care Homes

There are a considerable number of care homes in the Folkestone and Hythe locality. Patients who are looked after in a care home setting are often high users of medicines. However, because of the nature of their care, they rarely access pharmaceutical services individually, leaving this to be carried out by the care home staff. More recently care home organisations do not use local pharmacies for this service, favouring the large “hub” or “internet” pharmacies which specialise in this type of one-stop service. Therefore, there is not considered to be any relationship between the number of care homes and the need for local pharmaceutical services

### 2. Necessary services: current provision within the locality

(All data presented in this section is for the financial year 2020/21 with the exception of lateral flow devices data which covers the 4 months from April 2021 to July 2021)

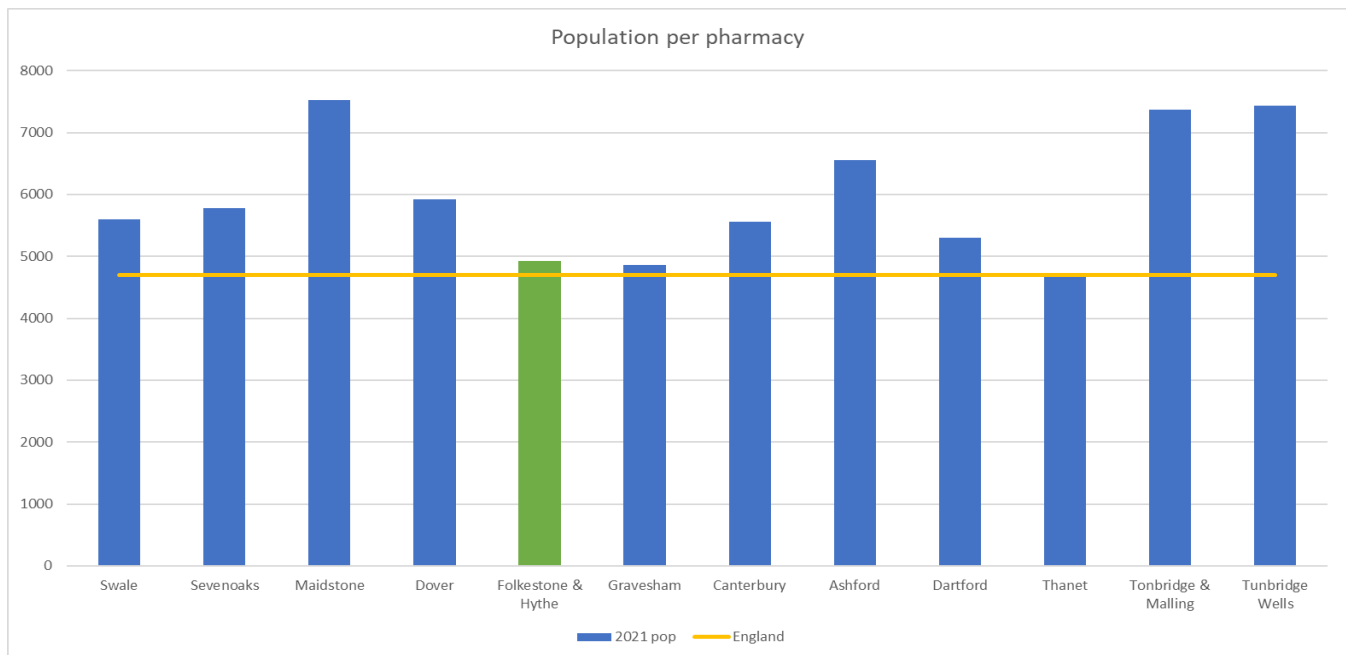
There are 23 Community pharmacies providing dispensing services in the Folkestone and Hythe locality.

In addition, there are three dispensing GP practices in the locality.



Each pharmacy provides on average, services for 4,927 of the area's population. Figure 34 below shows how this compares with the other localities of Kent.

**Figure 34. Number of people per pharmacy in each locality**



The facts below indicate that the majority of prescriptions generated in the locality are dispensed in the locality. There is a small percentage of prescriptions generated in the area that are dispensed in neighbouring areas and an even smaller percentage that are generated outside the locality and dispensed by Folkestone and Hythe community pharmacies <sup>(1)</sup>.

- 1,277 outside prescribers dispense in Folkestone & Hythe
  - 3.2% of all items dispensed in Folkestone & Hythe
- 36 prescribers in Folkestone & Hythe
  - 96.7% of all items dispensed in Folkestone & Hythe
- 40 dispensers in Folkestone & Hythe
  - 93.2% of all items prescribed in Folkestone & Hythe
- 956 dispensers outside of Folkestone & Hythe
  - 6.8% of all items prescribed in Folkestone & Hythe

### Pharmacy locality

Maps 1 and 2 above show the locality of the community pharmacies and GP dispensing practices.

## Opening times

All are open Monday to Friday, with 21 opening on Saturdays only and 5 opening on Saturday and Sundays. This gives a weekly opening hours range of 44 to 106 hours and an average of 61 hours of opening each week. Twenty of these pharmacies open for at least one hour after 5pm on weekdays.

Table 35 below shows the core and supplementary hours of each pharmacy <sup>(65)</sup>.

**Table 35. Opening times for all pharmacies**

Pharmacy	Total core weekly hours	Total supplementary weekly hours	Total weekly hours	Max. hours open after 5pm at least 1 day/week	Saturday hours	Sunday Hours
Lloyds Pharmacy, Folkestone Sainsbury	101	5	106	5	15	6
Vision Pharmacy, Hawkinge	100	2	102	6	16	6
Tesco Pharmacy, Cheriton	100	2	102	5.5	16	6
New Romney Pharmacy	100	0	100	6	14	6
Asda Pharmacy, Folkestone	100	0	100	6	15	6
Lloyds Pharmacy, New Romney	40	18.5	58.50	2	8.5	0
Eakins Chemist, Hythe	40	15.5	55.50	1.5	8	0
Paydens Pharmacy, Cheriton	40	13	53	1	8	0
Paydens Pharmacy, Hawkinge	40	12.75	52.75	1.5	4	0
Mistvale Chemist, Folkestone	40	11	51	2	6	0
Boots the Chemists, Folkestone	40	11	51	0.5	7.5	6
Ferris Pharmacy, Dymchurch	40	9	49	1	4	0

**Table 35 continued**

Pharmacy	Total weekly core hours	Total supplementary weekly hours	Total weekly hours	Max. hours open after 5pm at least 1 day/week	Saturday hours	Sunday Hours
Well, Greatstone	40	9	49	1	4	0
Well, Lydd	40	9	49	1	4	0
Central Pharmacy, Folkestone	40	9	49	1	4	0
Taylor's Pharmacy, Folkestone	40	9	49	1	4	0
Guildhall Pharmacy, Folkestone	40	6.5	46.5	1.5	4	0
Lyminge Pharmacy	40	6.5	46.5	1.5	4	0
McArdle Pharmacy, Folkestone	40	6.5	46.5	1.5	4	0
Boots the Chemists, Hythe	40	5	45	0.5	7.5	0
Superdrug Pharmacy, Folkestone	40	5	45	0.5	0	0
Lloyds Pharmacy, Folkestone	40	5	45	2	0	0
Paydens Pharmacy, Hythe	40	4	44	1	4	0

The Dispensing GP Surgeries in this locality are:

- Church Road Surgery Lyminge CT18 8HY
- Sellinge Surgery TN25 6JX
- New Lyminge Surgery CT18 8NJ

## Access to Community Pharmacies

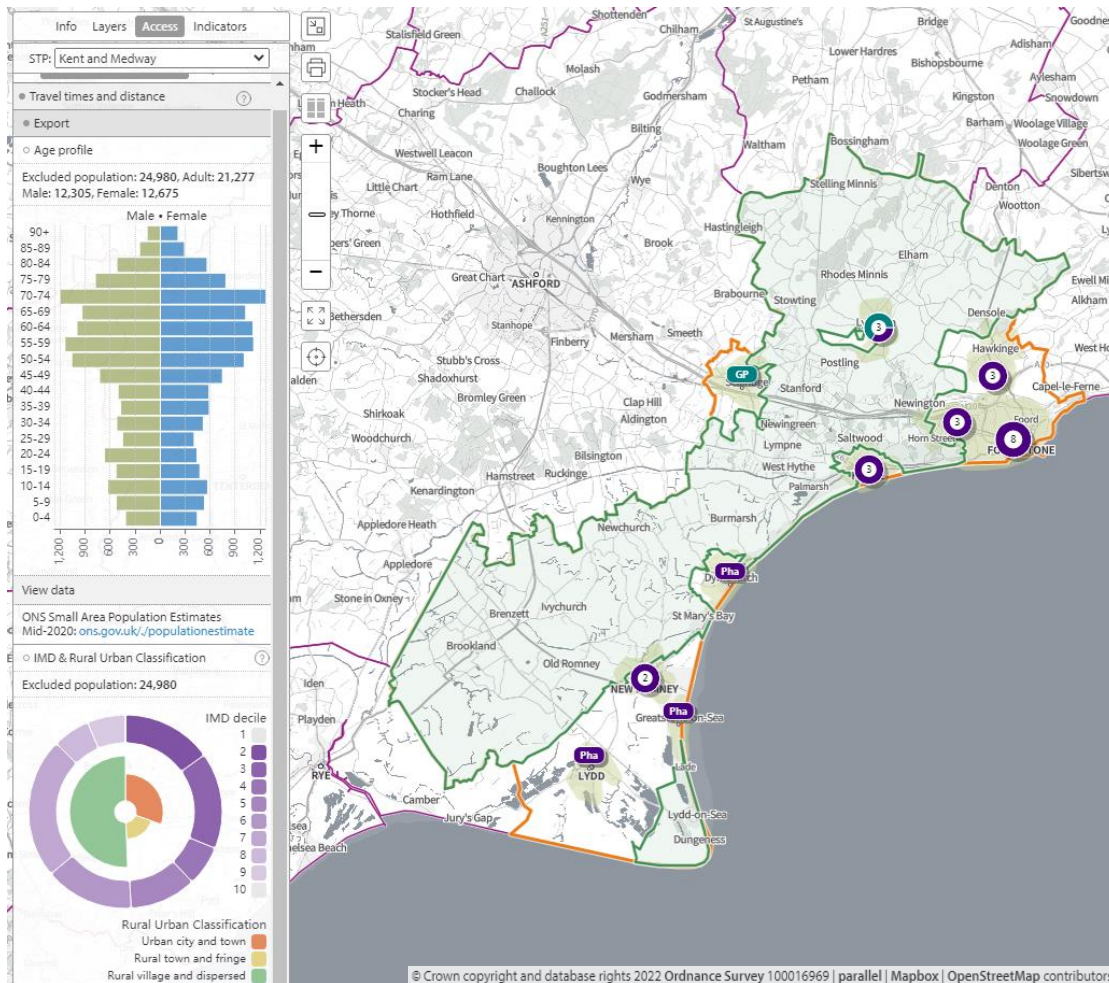
### Travel times

In **Map 89**, below, access during core opening hours is shown. The olive-green shaded areas are within a 20-minute walk of a community pharmacy/dispensing GP practice. 24,980 (22%) people are not within a 20-minute walk.

2 pharmacies do not open on Saturday, but this does not affect the population within a 20-minute walk on a Saturday.

28.3% (7,922) of 65+ population is not within a 20 -minute walk of a community pharmacy or dispensing GP practice.

### Map 89. Locations of community pharmacies/dispensing GPs and lower super output areas not within a 20-minute walk





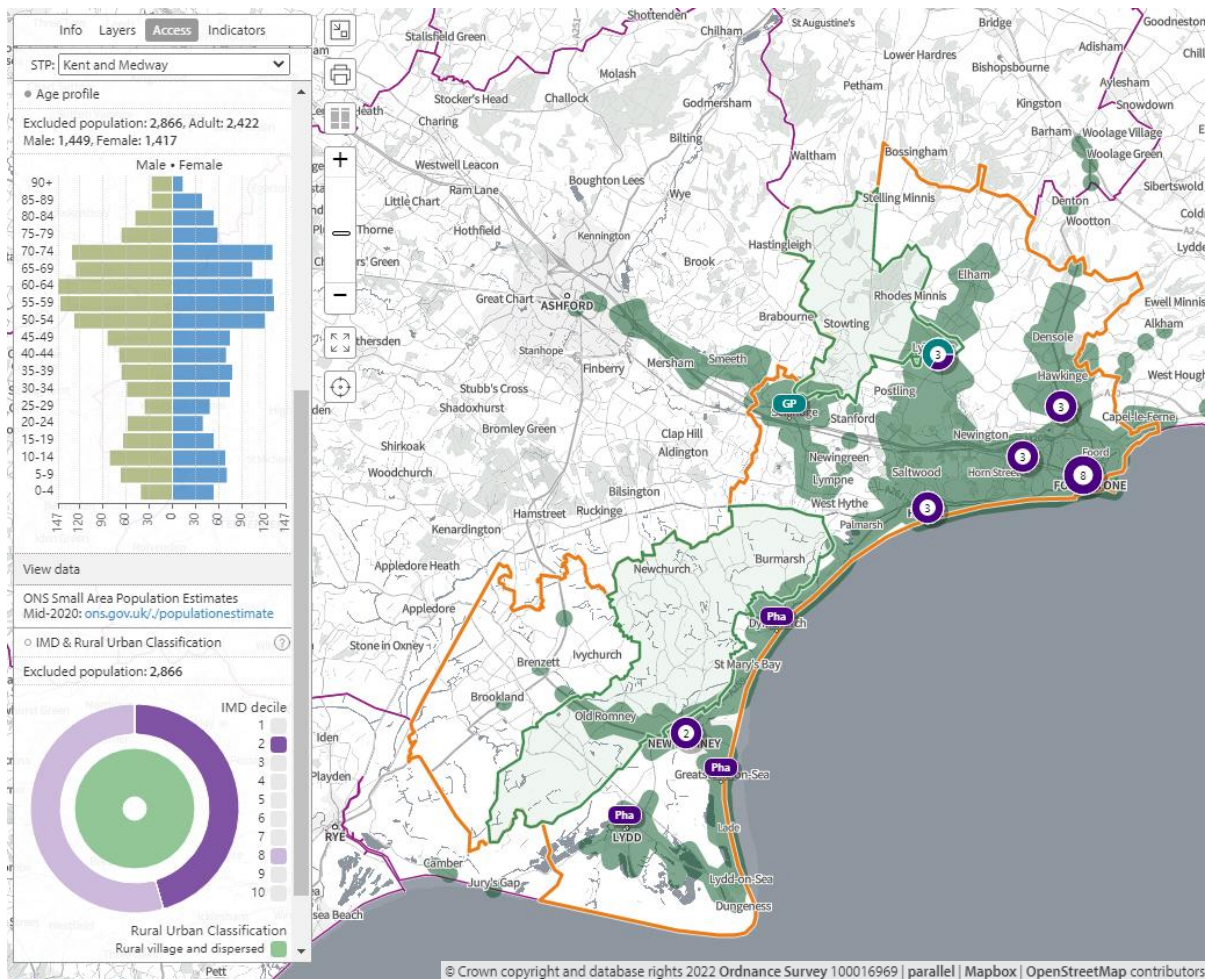
In **map 90**, below, the green-shaded areas are **within 20-minutes by public transport** of a community pharmacy/dispensing GP practice.

2,866 (2.5%) people are not within 20-minutes by public transport.

All pharmacies are open for at least 3 hours on a Saturday.

2.9% of 65+ population is not within 20 minutes by public transport of a community pharmacy or dispensing GP practice.

**Map 90. Locations of community pharmacies/dispensing GPs and lower super output areas not within 20-minutes by public transport**

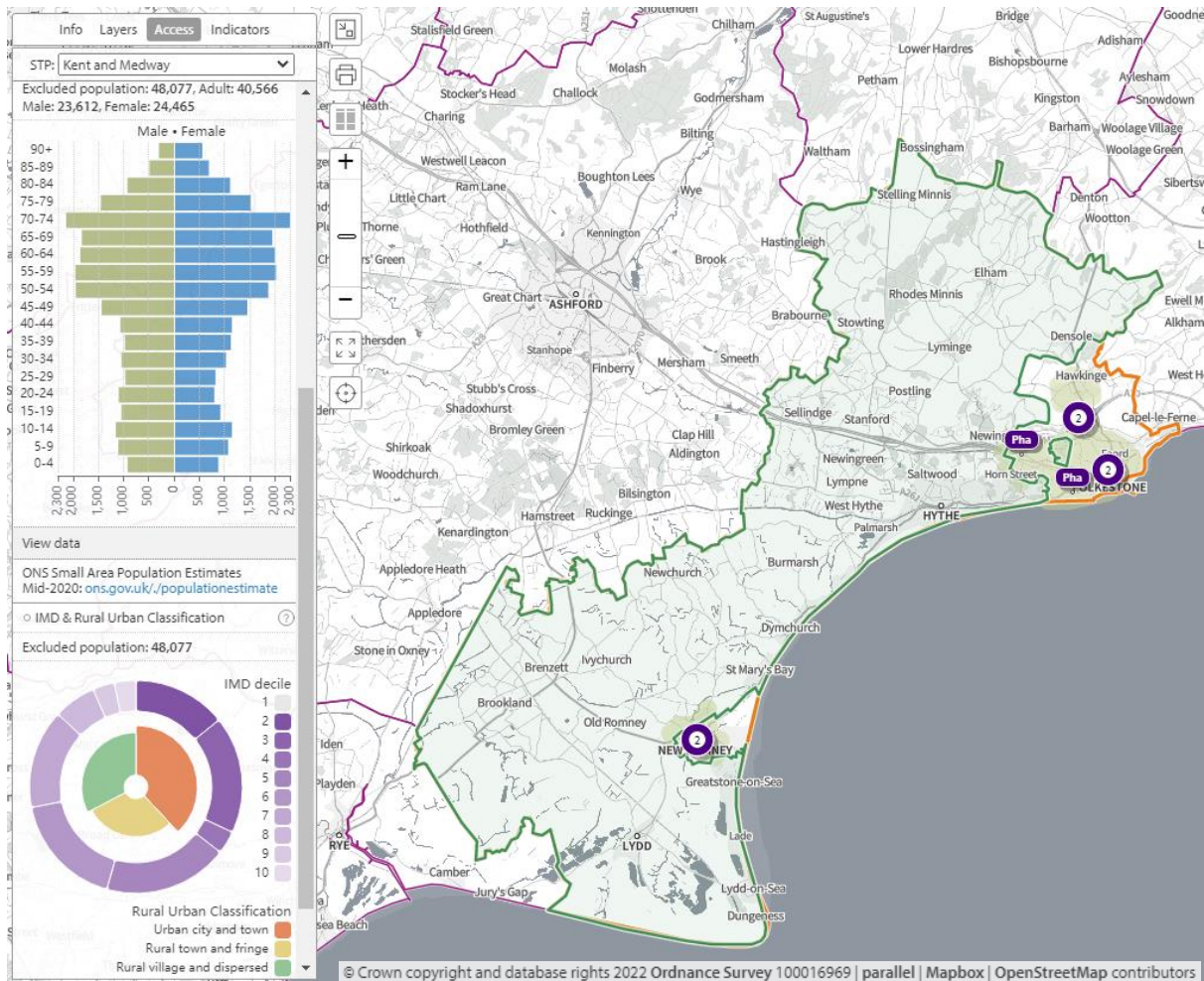


In **map 91**, below, the olive-green shaded areas are **within a 20-minute walk of a community pharmacy that opens until at least 7pm on weekdays**.

48,077 (42.4%) people are not within a 20-minute walk of a community pharmacy that opens until at least 7pm on weekdays.

54.4% (15,252) of 65+ population is not within a 20-minute walk of a community pharmacy that opens until at least 7pm on weekdays.

**Map 91. Locations of community pharmacies open until at least 7pm and lower super output areas not within a 20-minute walk**



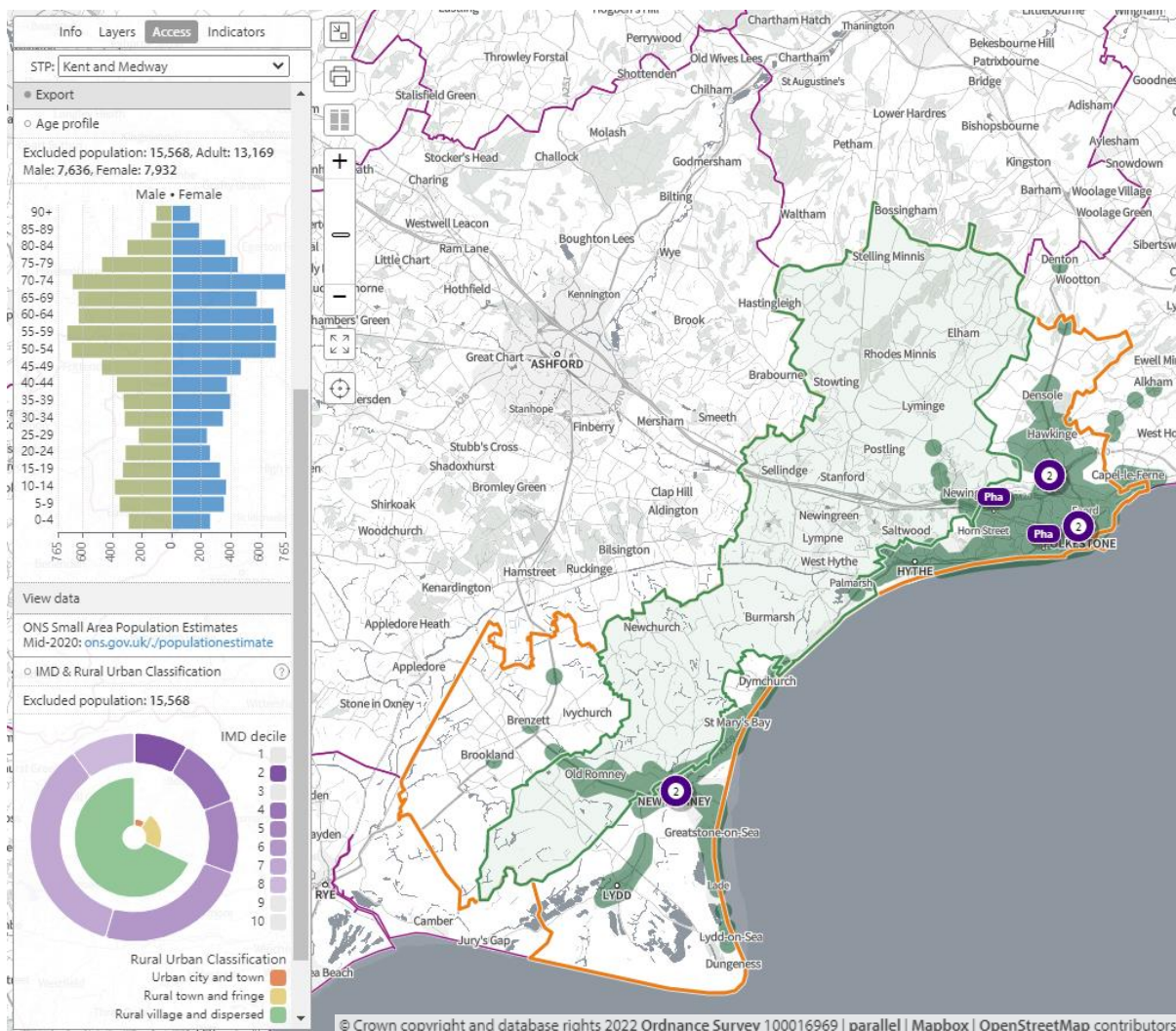


In **map 92**, below, the green shaded areas are within **20-minutes by public transport of a community pharmacy that opens until at least 7pm on weekdays**.

15,568 (13.7%) people are not within 20-minutes by public transport that until at least past 7pm on weekdays.

17% (4,752) of 65+ population is not within 20 minutes by public transport of a community pharmacy that opens until at least 7pm on weekdays.

**Map 92. Locations of community pharmacies open until at least 7pm and lower super output areas not within 20-minutes by public transport on weekday evenings**

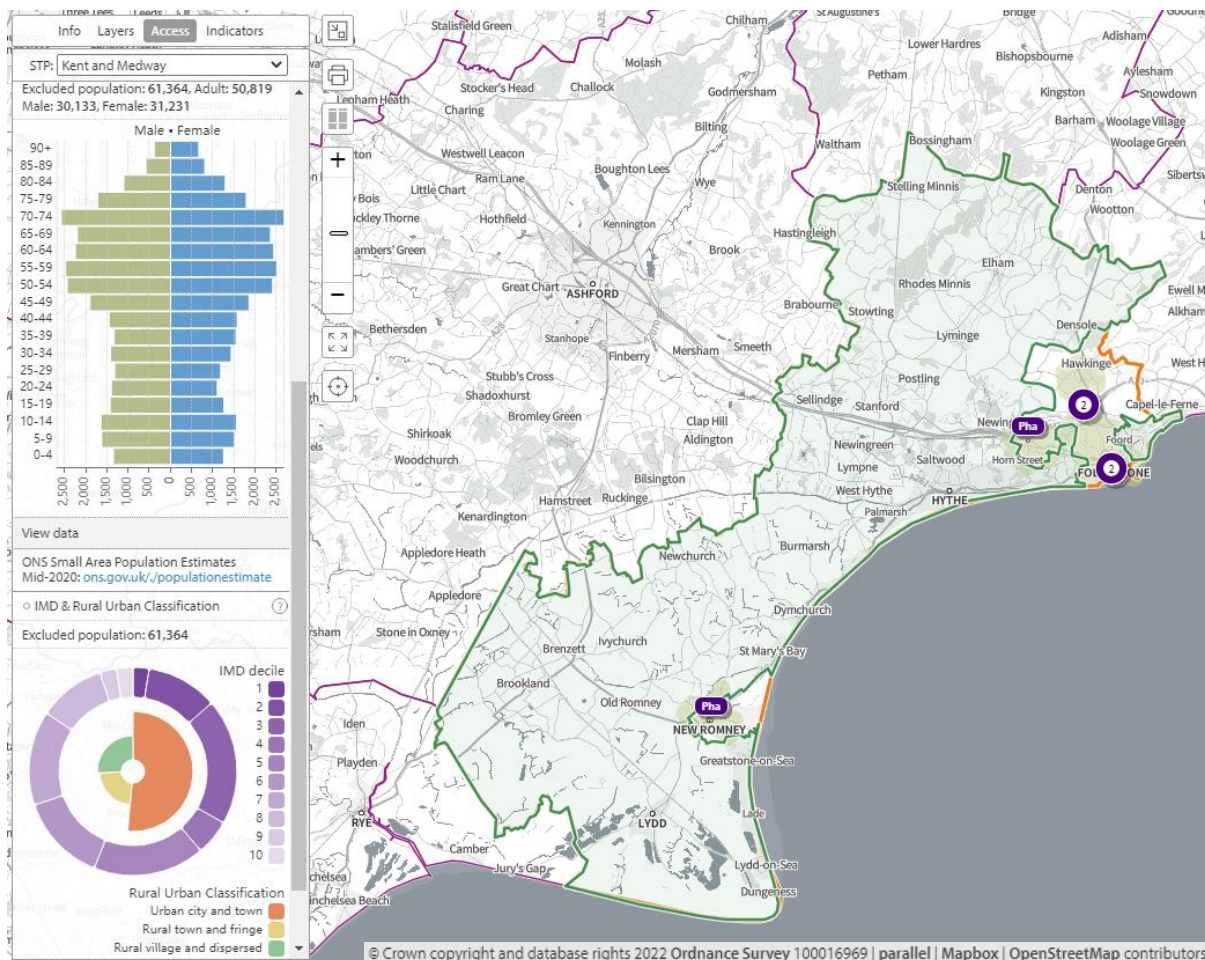


In **map 93**, below, the olive-green shaded areas are within a **20-minute walk of a community pharmacy that opens on Sundays**.

54.2% (61,364) of the population is not within a 20-minute walk of a community pharmacy that opens on Sundays.

64.3% (18,012) of 65+ population is not within a 20-minute walk of a community pharmacy that opens on Sundays.

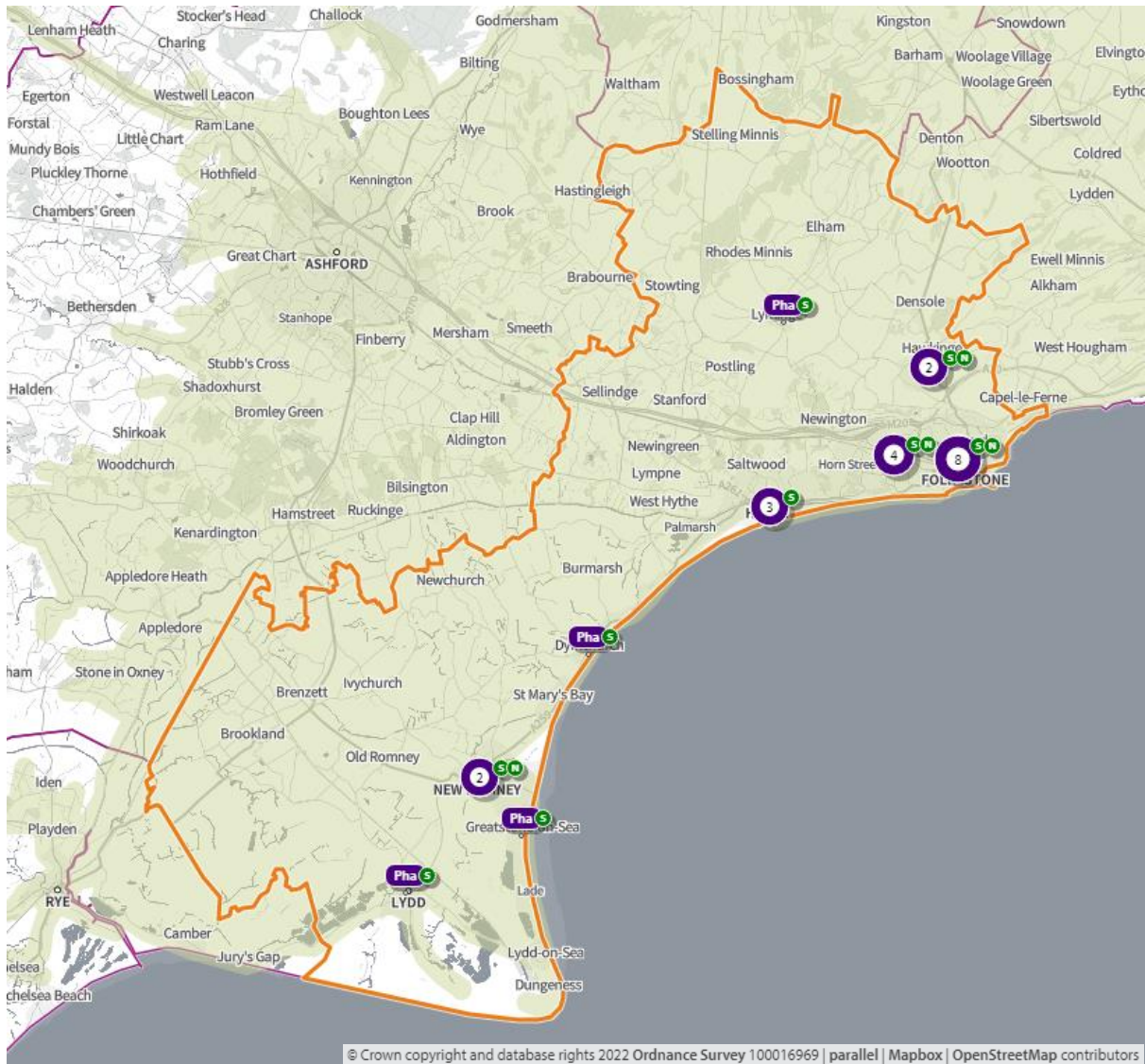
**Map 93. Locations of community pharmacies open on Sundays and lower super output areas not within a 20-minute walk**





In **map 94**, below, access during **core opening hours, Saturdays and Sundays** is shown. The olive-green shaded areas are **within a 20-minute drive** of a community pharmacy/dispensing GP practice. The entire population is within a 20-minute drive.

**Map 94. Locations of community pharmacies and areas within 20-minutes by car**

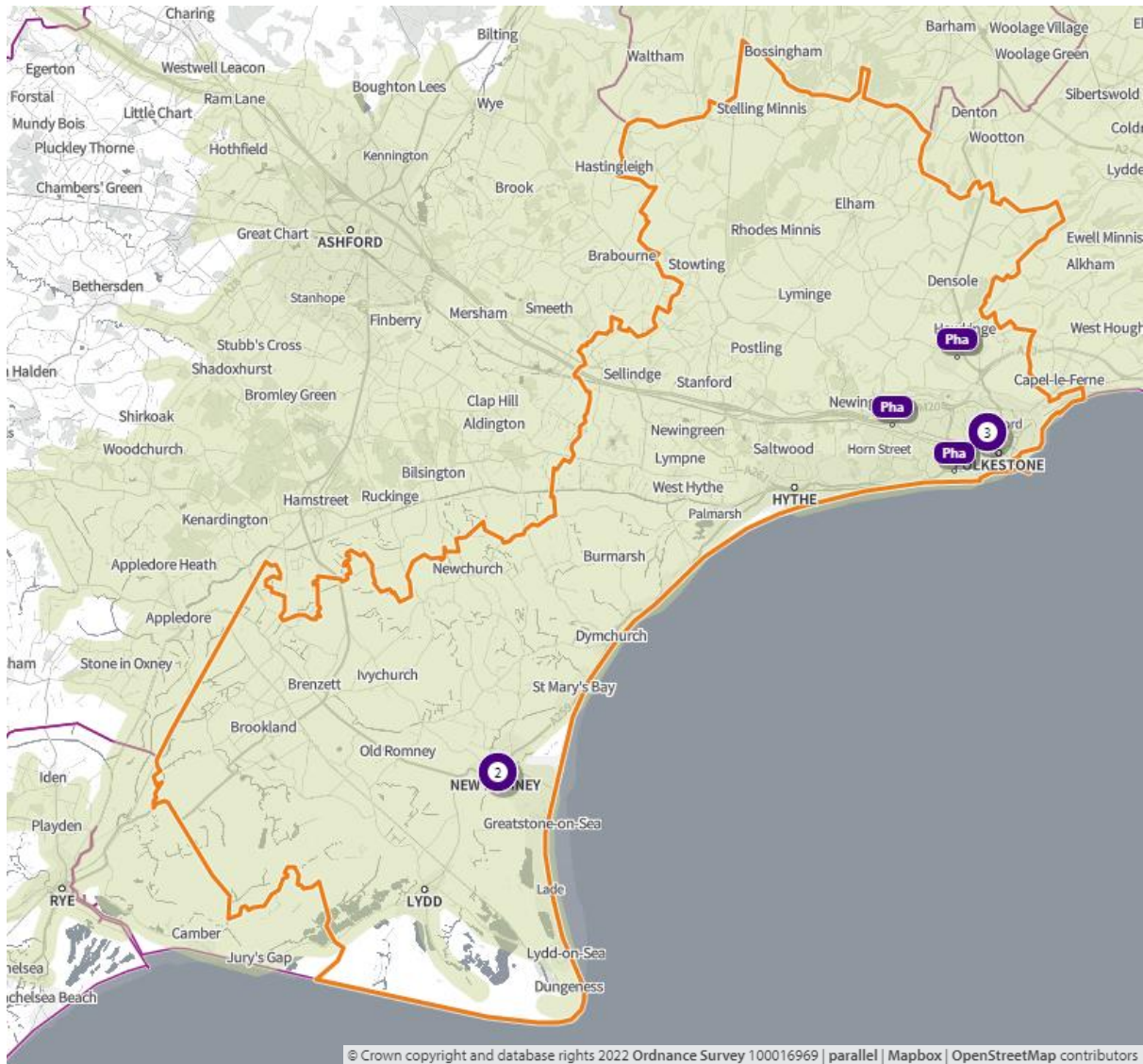


S = Saturday opening N = Sunday opening



In **map 95**, below, the green shaded areas are **within 20-minutes by car** of a community pharmacy that opens until **at least 7pm on weekdays**. The entire population is within a 20-minute drive.

**Map 44. Locations of community pharmacies open until at least 7pm on weekdays and areas within 20-minutes by car**



### 3. Necessary services: current provision outside the localities area <sup>(1)</sup>

The information below indicates the number of prescriptions dispensed in and outside of the locality.

- 2.32 million items prescribed in Folkestone
  - 2.16 million items dispensed in Folkestone
    - 1.9 million (88%) via Electronic Prescription Service
  - 158,403 (6.8%) dispensed outside of the district
    - 89,000 distance selling
    - 23,000 Ashford
    - 14,000 Canterbury
    - 12,000 Dover
  
- 2.23 million items dispensed in Folkestone
  - 2.04 million items dispensed by community pharmacies in Folkestone
  - 194,000 dispensed by 16 GP practices:
    - Sellindge Surgery – 104,515
    - New Lyminge Surgery – 37,768
    - Church Road Surgery – 16,672
  - 72,184 items prescribed outside borough i.e. more going out than coming in

Some residents choose to access contractors outside both the locality and the Health and Wellbeing Board's area in order to access services:

- Offered by dispensing appliance contractors
- Offered by distance selling premises
- Which are located near to where they work, shop or visit for leisure or other purposes.

Considering this choice of pharmacy outside of the locality, the majority of residents can access a pharmacy and do access pharmacy services within the locality.

#### 4. Other relevant services: current provision

The following advanced services were delivered by pharmacies in the Folkestone and Hythe locality in 2020/21.

**Table 36. Number of pharmacies providing advanced services**

Advanced service name	No. of pharmacies
New Medicine Service	22
Appliance Use Review	0
Hypertension Service <sup>‡</sup>	22
Stoma Appliance Customisation	4
Community Pharmacist Consultation Service (CPCS) <sup>‡</sup>	23
Hepatitis C Antibody Testing Service	0
Seasonal Influenza Vaccination Advances Service	22
*Covid Vaccination Service	1
*Covid Home Delivery Service	20
*Covid lateral flow device distribution	23

\*Specific to the Covid-19 pandemic

<sup>‡</sup>Services introduced during the year of study

Please note that three services were specific to the Covid-19 pandemic (\*Covid Vaccination, \*Home Delivery, and \*lateral flow device distribution) and that others were new services introduced within the year (CPCS and Hypertension service). There is, however, good participation and early adoption of new services from pharmacies in this locality.

#### 5. Other NHS services

The Strategic Health Asset Planning and Evaluation (SHAPE) web application provides the following information:

- Hawkinge Health Centre is open 8.30am – 1pm on Saturdays
- Lyminge Surgery is open 6.30pm – 8pm on Thursdays
- Manor Clinic is open until 7pm on weekdays and 8.30am – 12.30pm on Saturdays
- Martello Health Centre is open until 8pm on Mondays
- New Lyminge Surgery is open until 8pm on Tuesdays
- Oak Hall Surgery is open 7pm on Tuesdays, Wednesdays and Fridays
- Oaklands Health Centre is open until 8pm on Mondays and Tuesdays
- Sandgate Road Surgery is open 9am – 1pm on Saturdays

There is a minor Injury unit situated in the Royal Victoria Hospital in Folkestone. It is open 8am to 8pm every day of the year.

There are also drug and alcohol services, Kent and Medway NHS Hospital Trusts and Kent and Medway NHS and Social Care Partnership Trust and Kent Community Health NHS Foundation Trust with services that generate prescriptions that are dispensed by community pharmacies in this locality.

The number of prescriptions from these services is shown below:

- 13 pharmacies dispensed a total of 4,344 (mean = 334, range = 1-2,051) items from drug and alcohol services
- 24\* pharmacies and 2 GP practices dispensed a total of 2,522 (mean = 97, range = 2-295) items from Kent and Medway NHS and Social Care Partnership Trust (secondary mental health services)
- 20 pharmacies dispensed a total of 102 items (mean = 5, range = 1-17) from KCHFT
- 24\* pharmacies and 2 GP practices dispensed a total of 15,965 items (mean = 614, range = 42-1,217) from Kent and Medway hospitals

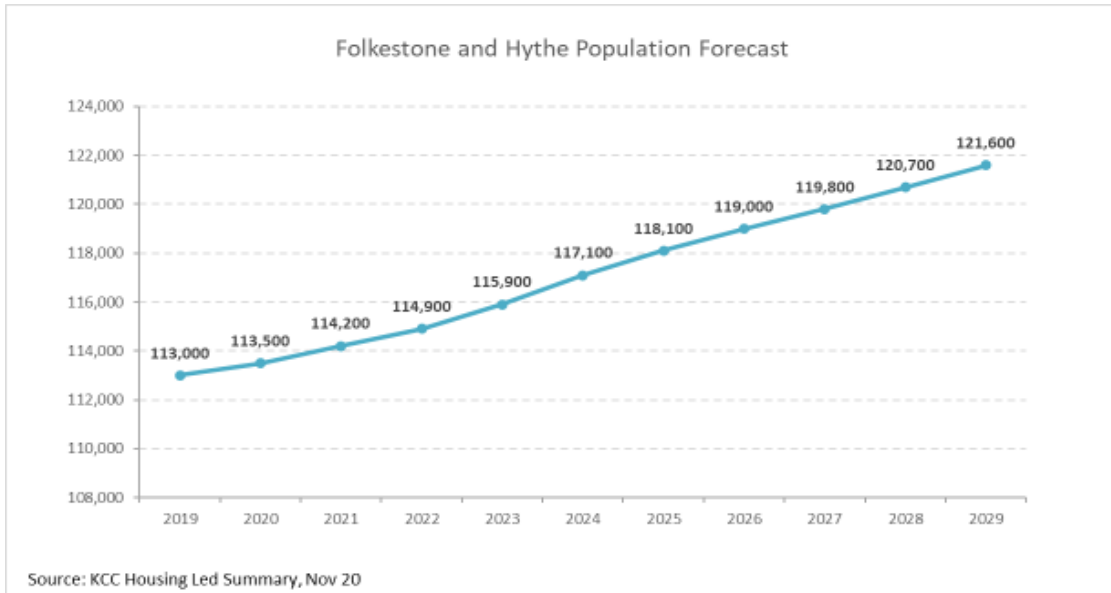
## **6. Choice with regard to obtaining pharmaceutical services**

As can be seen from sections 2 and 3, those living within the locality and registered with one of the GP practices generally choose to access one of the pharmacies in the locality in order to have their prescriptions dispensed or, if eligible, to be dispensed to by their practice. Those that look outside the locality usually do so either to access a neighbouring pharmacy, or a dispensing appliance contractor or distance selling premises outside of the Health and Wellbeing Board's area.

## **7. Developments**

Figure 35 below shows the predicted increase in the population of the Folkestone and Hythe locality continuing to grow over the lifetime of this PNA. By 2025 it is estimated that each pharmacy will serve a population of 5,287.

**Figure 35. Folkestone & Hythe population forecast**



 **1 pharmacy per 5,287 people in 2025**

This is an increase of 360 people per pharmacy from 2022. As stated in the community pharmacy contractors survey 16 pharmacies in the Folkestone and Hythe locality do have capacity to increase their services and 1 stated it did not. A total of 17 out of 23 pharmacies responded to the survey.



**Map 96** shows where there are major housing developments planned in the coming years and table 37 indicates the number of dwellings planned for each site. With an average of 2.4 people per proposed dwelling, by 2025 these sites will increase the population by approximately 6,000 people

**Map 96. Location of housing developments**



**Table 37. Proposed housing developments – number of dwellings per year at each development**

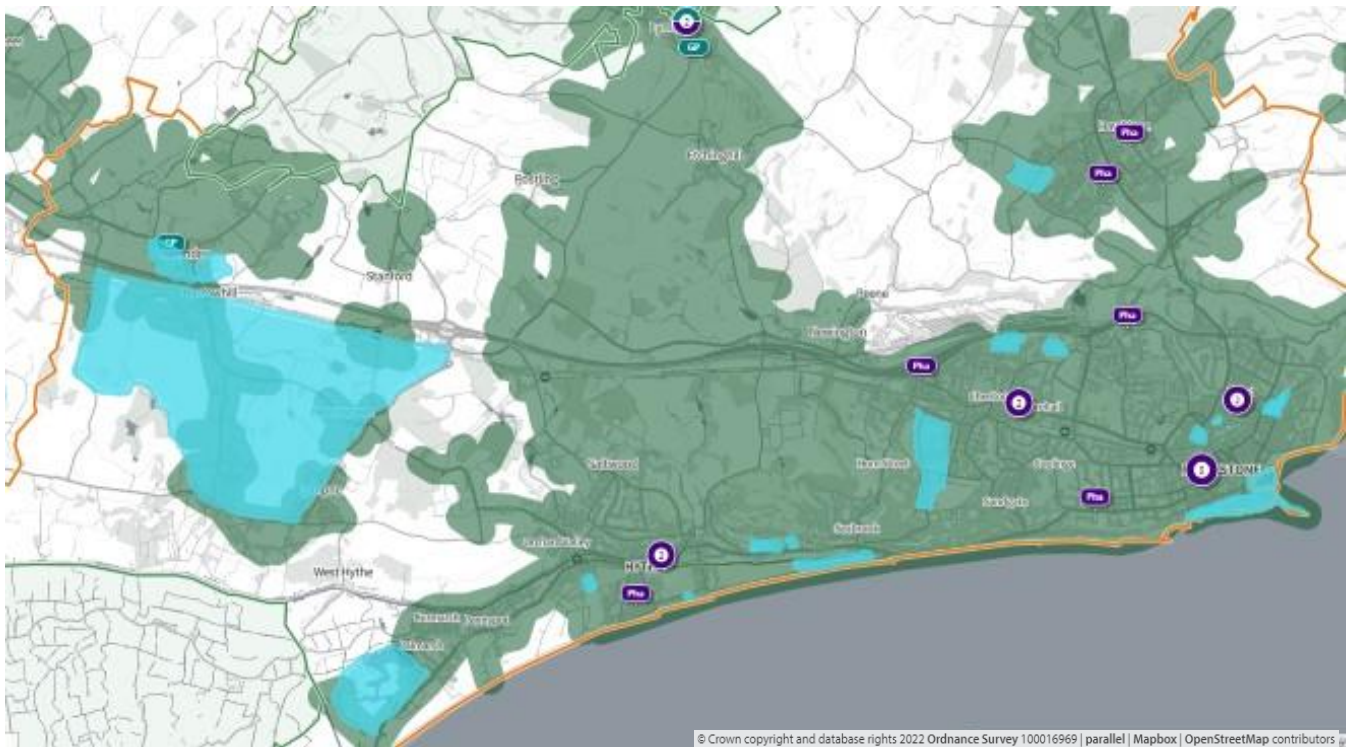
Site Name	20/21	21/22	22/23	23/24	24/25	25/26	26/27	27/28	28/29	29/30	2025	2030
1. Otterpool Park	-	-	-	121	264	331	350	423	423	528	385	2440
2. The Stadium, Church Road, Folkestone	117	109	95	103	85	95	95	95	95	17	509	906
3. Nickolls Quarry, Hythe	40	60	92	132	129	111	168	138	5	-	453	875
4. Former Rotunda Amusement Park, Folkestone	-	84	40	40	100	40	40	40	40	135	264	559
5. Main Road, Sellindge	65	65	60	-	-	-	-	-	-	-	190	190
6. Sellindge Strategy (Phase 2 Site B)	-	-	50	70	42	-	-	-	-	-	162	162
7. Foxwood School, Seabrook Road, Hythe	-	-	-	20	40	40	40	10	-	-	60	150
8. Princes Parade, Hythe	-	-	-	20	40	40	40	10	-	-	60	150
9. Smiths Medical, Hythe	-	-	20	30	30	17	37	-	-	-	80	134
10. Former Gas Works, Ship Street, Folkestone	-	-	-	-	20	20	20	20	20	-	20	100
11. Aerodrome Road, Hawkinge	-	-	20	40	16	-	20	40	40	-	76	176
12. Caesars Way, Folkestone	-	20	30	27	-	-	-	-	-	-	77	77
13. Shearway Road, Cheriton	-	-	-	-	20	30	20	-	-	-	20	70
14. St Saviours Hospital, Seabrook Road, Hythe	-	4	-	15	32	-	-	-	-	-	51	51
15. Hythe Swimming Pool	-	-	-	-	25	25	-	-	-	-	25	50
16. Shepway Close, Folkestone	-	-	17	15	15	-	-	-	-	-	47	47
17. East Station Goods Yard, Folkestone	-	-	-	20	21	-	-	-	-	-	41	41

In the following maps: access within 20 minutes by walking, public transport and driving from these new developments to community pharmacies is shown with access on different days and times of the week.

**Map 97. Location of community pharmacies/dispensing GPs, proposed housing developments, and areas within a 20 minute walk of a community pharmacy/dispensing GP**



**Map 98. Location of community pharmacies, proposed housing developments, and areas within 20 minutes of a community pharmacy by public transport on weekday mornings**

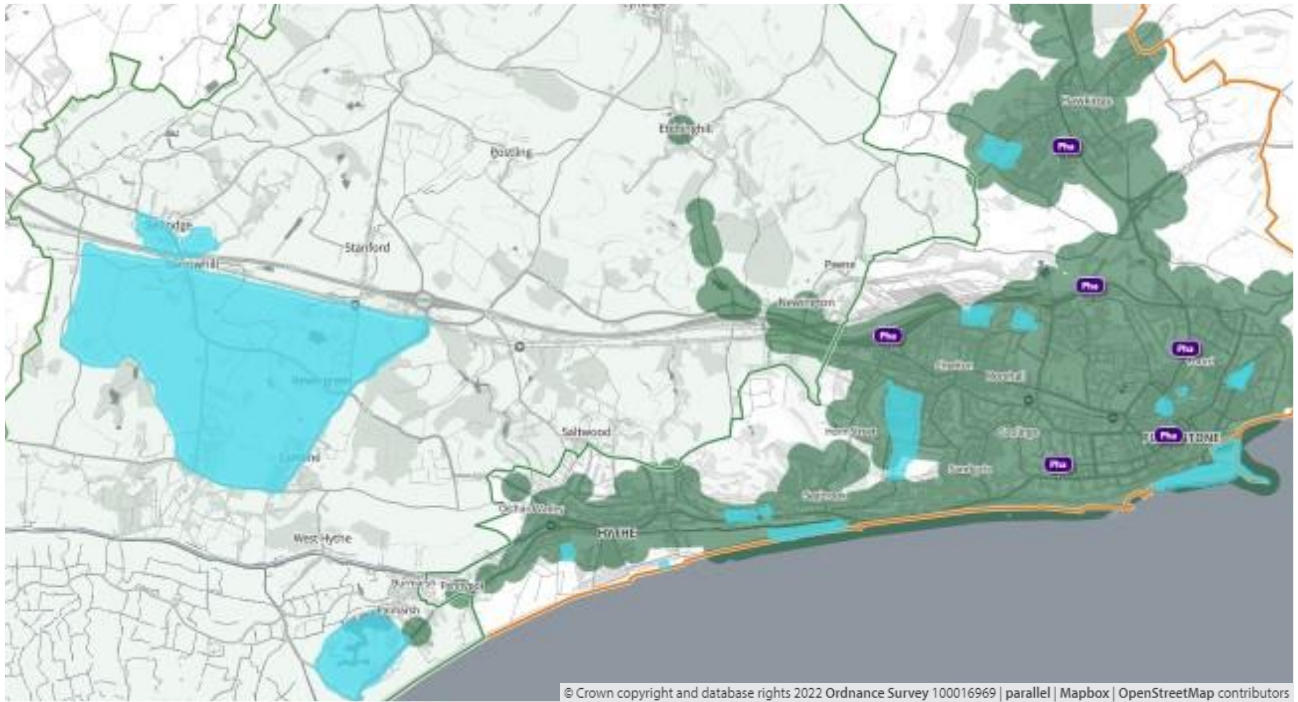


**Map 99. Location of community pharmacies, proposed housing developments, and areas within a 20 minute walk of a community pharmacy that is open until at least 7pm**

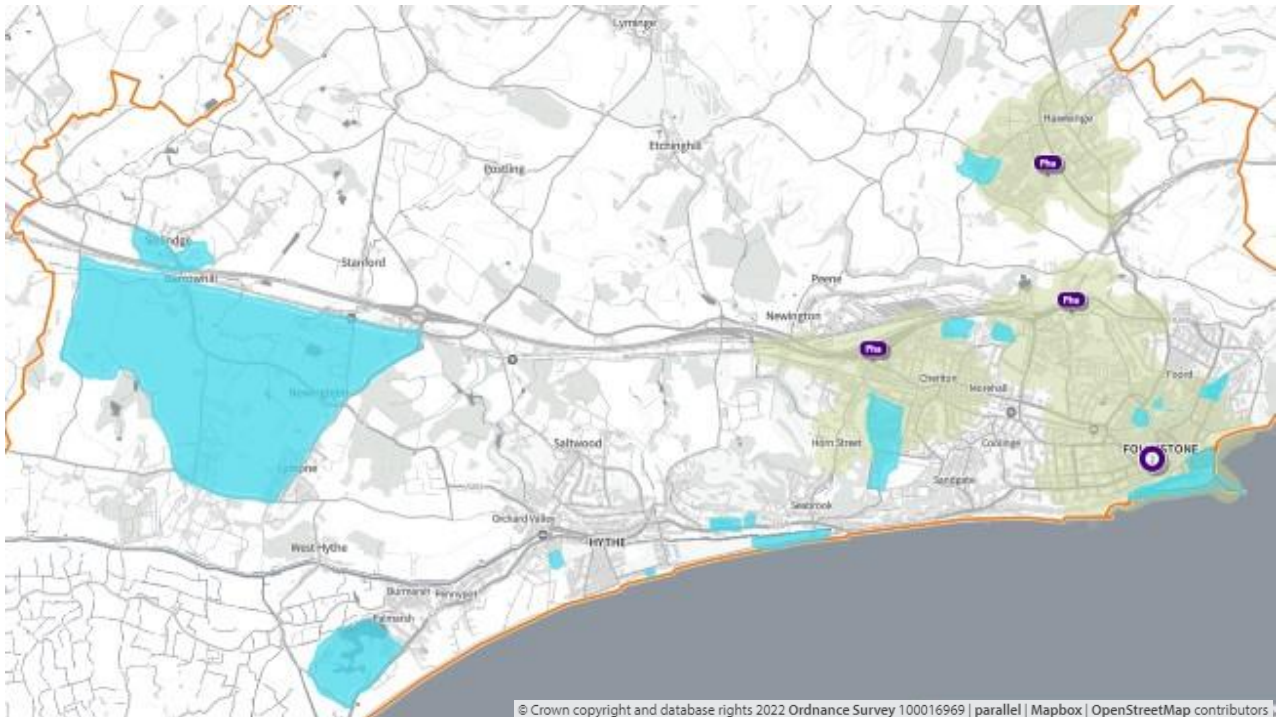




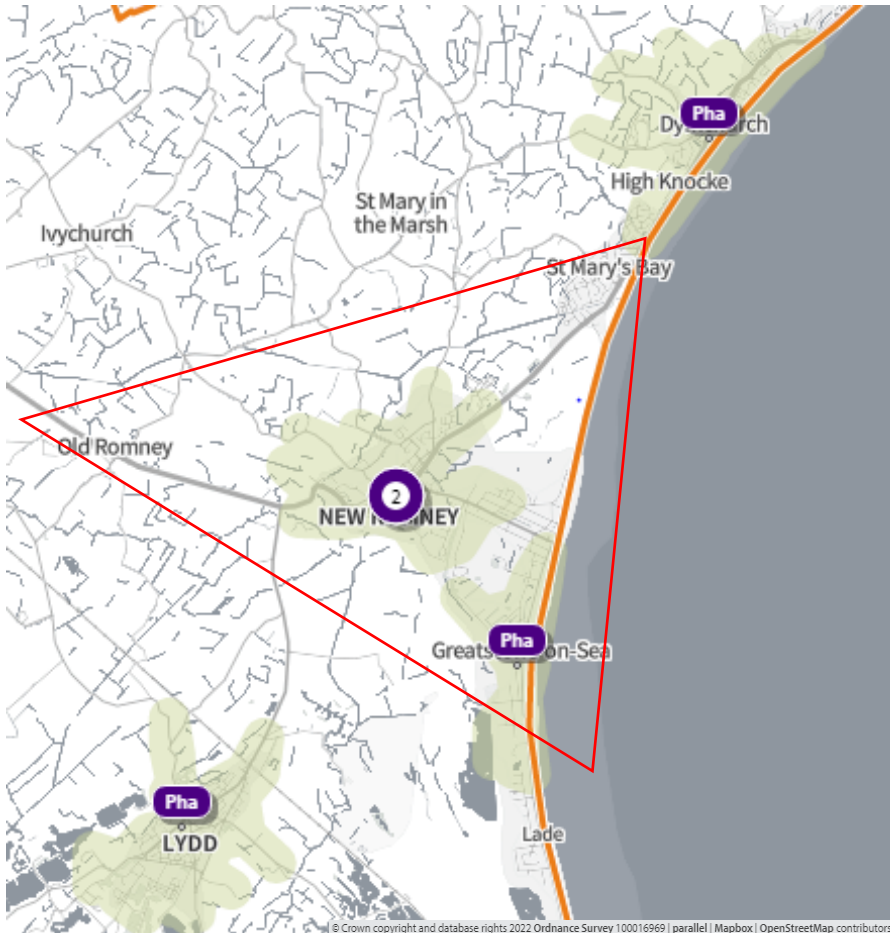
**Map 100. Location of community pharmacies open until at least 7pm, proposed housing developments, and areas within 20 minutes of a community pharmacy by public transport on weekday evenings**



**Map 101. Location of community pharmacies, proposed housing developments, and areas within a 20-minute walk of a community pharmacy that is open on Sundays**



There is additional significant housing development in the area highlighted by the red triangle. Around 450 dwellings are proposed in the area marked by the red triangle.



### 8. Necessary services: - Gaps in provision

The developments at (1) Otterpool Park, (5) Main Road, Sellinge and (6) Sellinge phase 2 site B do not have access to a pharmacy within 20 minutes walking or public transport. By 2025/26 it is estimated that the population will have grown by 2,063.

The Otterpool development is predicted to see an increase in population of 1600 by 2025/26, if building goes ahead as predicted. At present there is no access by walking or public transport to a community pharmacy at any day of the week or time.

### 9. Improvements or better access: Gaps in provision

There will be a future need for a pharmacy providing necessary (essential) services and a selection of advanced services pertinent to the population in 2025/26, if the three developments occur as planned. It is noted that there is a dispensing GP practice in Sellindge on the edge of the proposed Sellindge developments. Those patients that live over 1.6km from a community pharmacy and are registered with the practice would be eligible to have their prescriptions dispensed by the practice.