

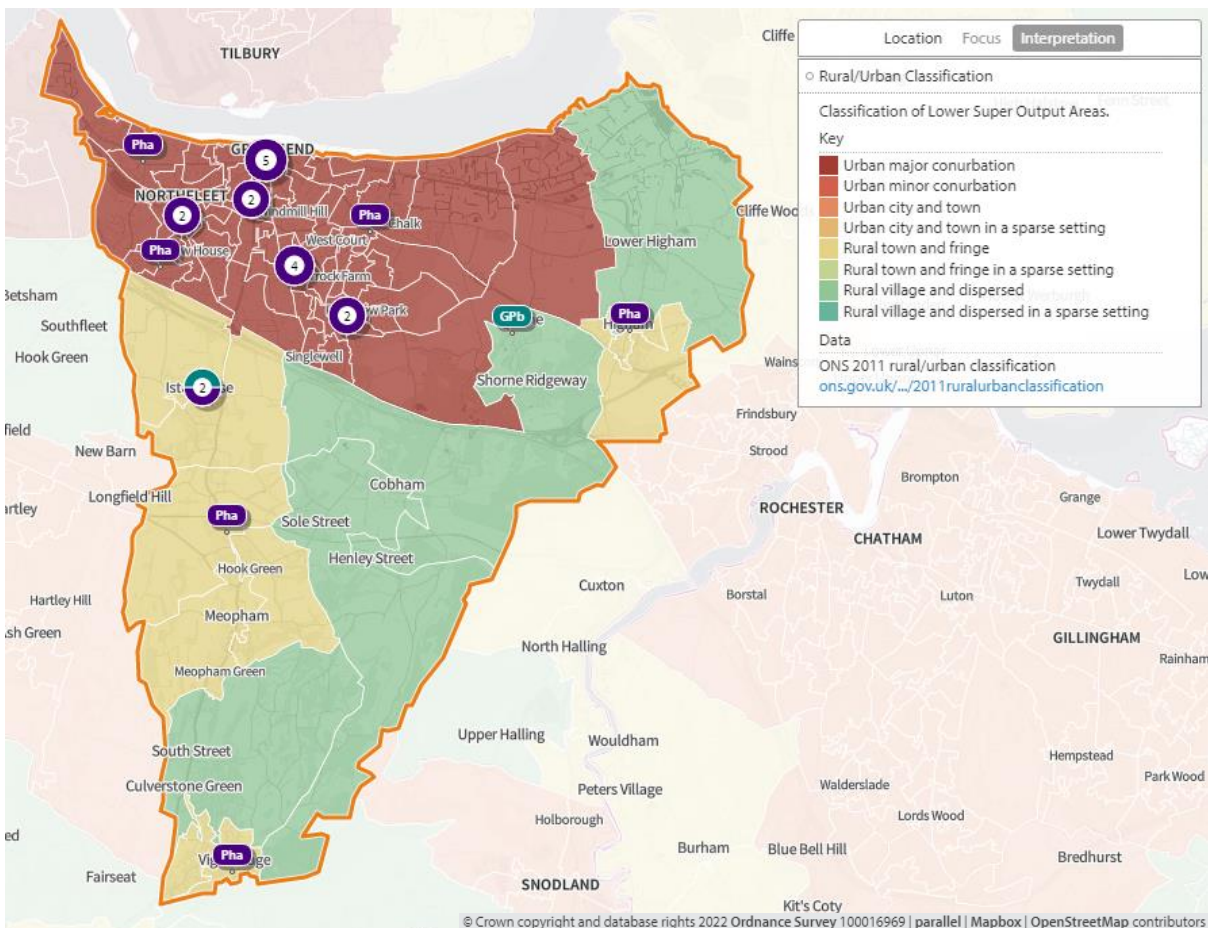
13 Gravesham Council Locality

PNA Gravesham Locality

1. Key Facts

Gravesham is a local government district in the north-west of the county. It covers an area of 99 square km. Most of the population live in the Thames riverside town of Gravesend and within its urban sprawl. Map 102 shows that approximately one-third of the district is classified as urban, the remainder of the district is dotted with villages. The villages of Vigo and Higham are relatively densely populated amongst the more rural areas of the district.

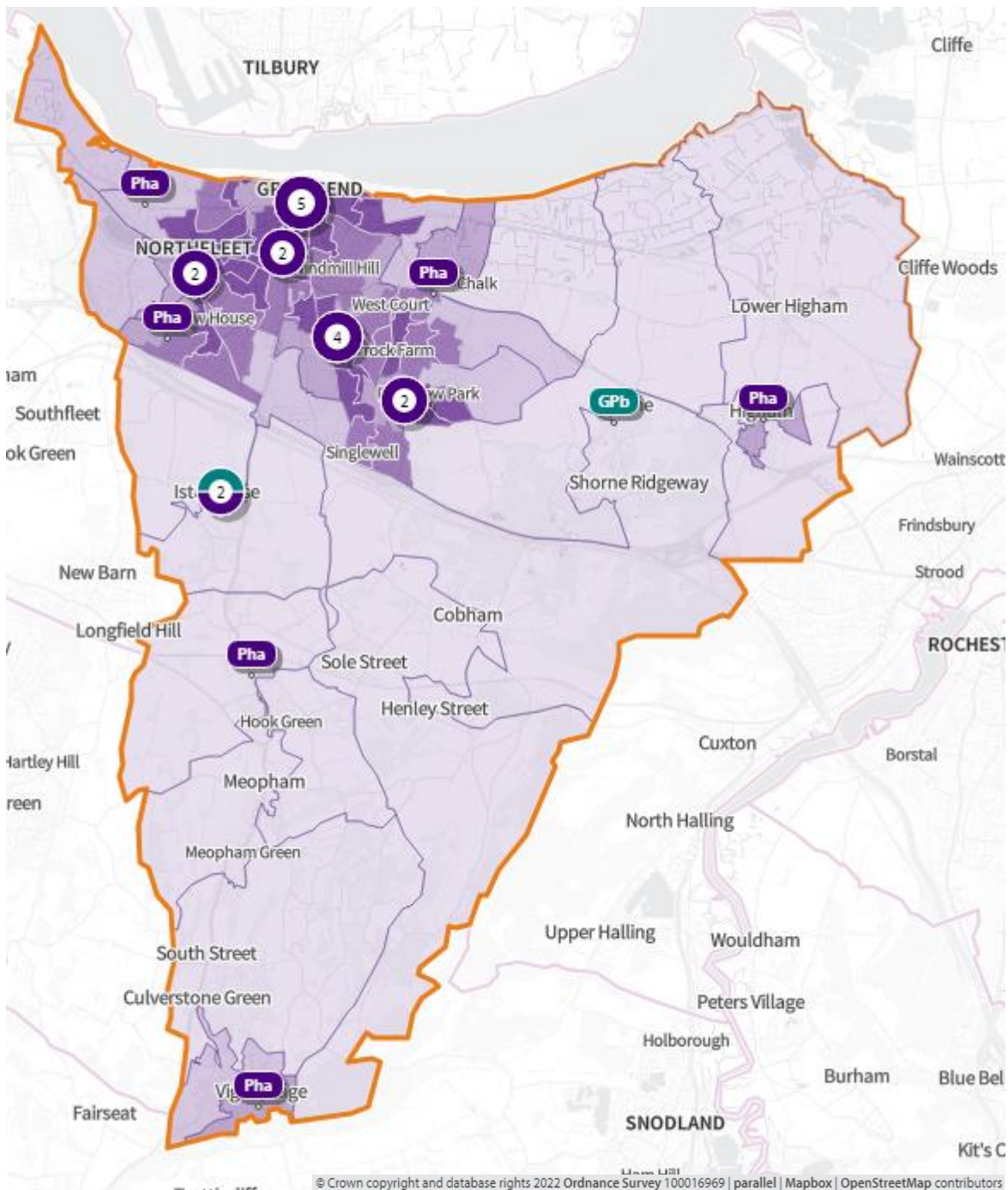
Map 102. Rural/urban classification of lower super output areas



Population

Map 103 below shows the distribution of the population in the locality. Gravesend has a population of 106,890. The population density is greatest in the town of Gravesend and surrounding area. This highly densely populated area covers a large area of the district, approximately one quarter.

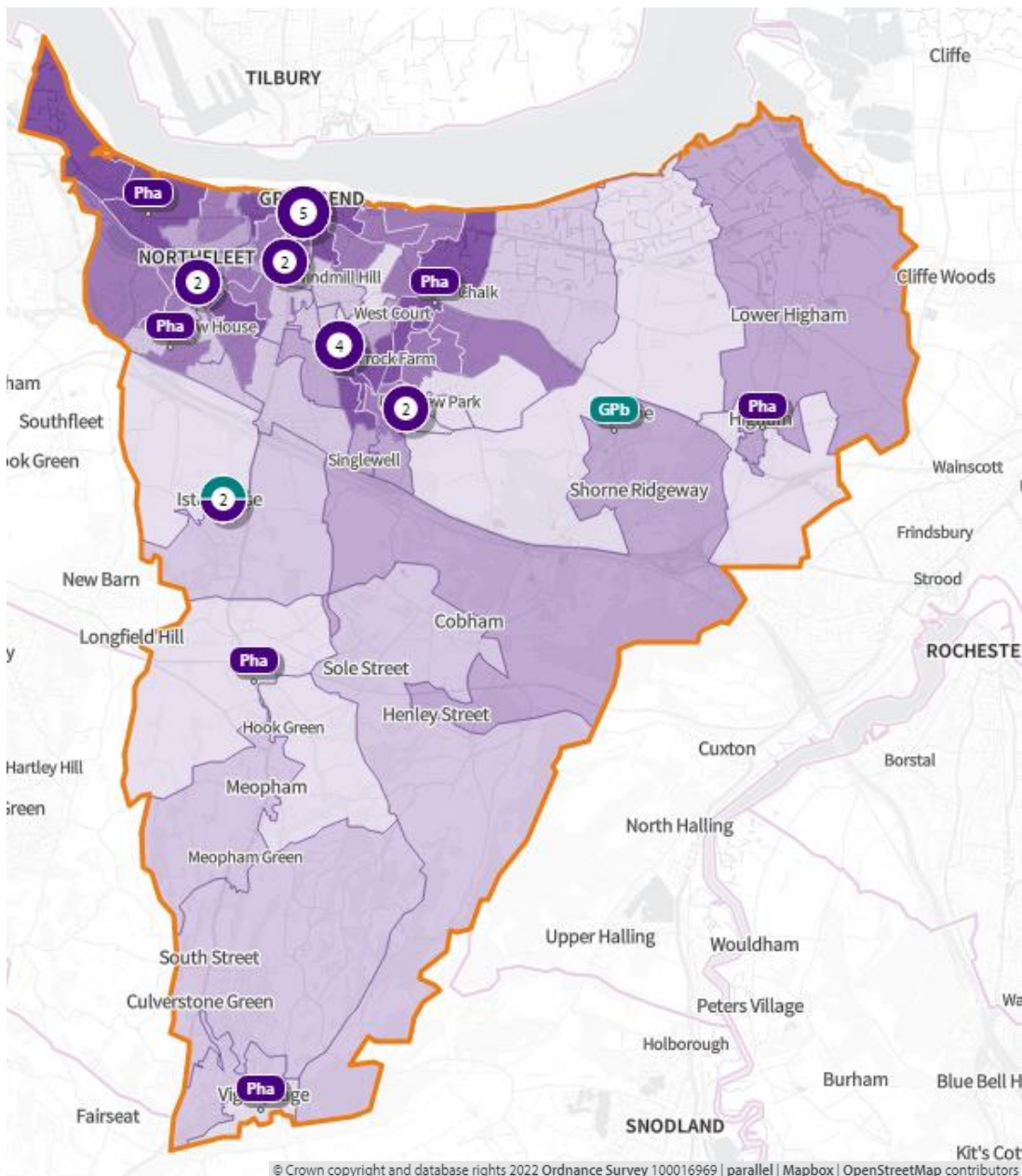
Map 103. Population density of lower super output areas overlaid with locations of pharmacies and dispensing doctors



Deprivation

Map 104 below shows the areas of deprivation in the Gravesham locality. Gravesham is ranked 5th out of Kent's 12 districts for deprivation. Deprivation is relatively low or average across the majority of the districts area, however there is a concentration of higher deprivation in the densely populated areas in and around Gravesham. Two LSOAs are within the top 10% most deprived areas in England. Employment rates are third lowest in Kent⁽⁶³⁾ but educational attainment is slightly higher than the Kent average⁽⁶⁴⁾.

Map 104. Deprivation of lower super output areas overlayed with locations of pharmacies and dispensing doctors



Language

English is the main language for all people aged 16 or over in 89.6% of households in the district. 5% of households have no people with English as the main language, this is the highest of all Kent districts ⁽²⁾.

Home ownership

65% of houses are owned either outright (31%) or with a mortgage (34%). The average number of occupants per household is 2.5, slightly higher than the Kent average of 2.4 ⁽²⁾.

Age Distribution

The average age of Gravesham district residents is 39.6, lower than the Kent average of 41.4 and second lowest of all Kent districts. 17.4% of the population is over 65 (the lowest proportion of 65+ of all Kent districts) and 21.5% 0-15 ⁽²⁾. Life expectancy at birth is 78.2 for males and 82.2 for females ⁽⁴⁶⁾.

Economy

By industry, the top three employers in the Gravesham district are administrative and support service activities (14.6%), wholesale and retail trade (13.8%) and education (11.5%) ⁽¹⁵⁾. Gravesham has a much higher proportion of employees working in administrative and support service activities compared to the Kent average (14.6% vs 8.6%) ⁽¹⁵⁾.

Car ownership

23% of households in Gravesham district do not have a car or van in the household ⁽¹³⁾.

Care Homes

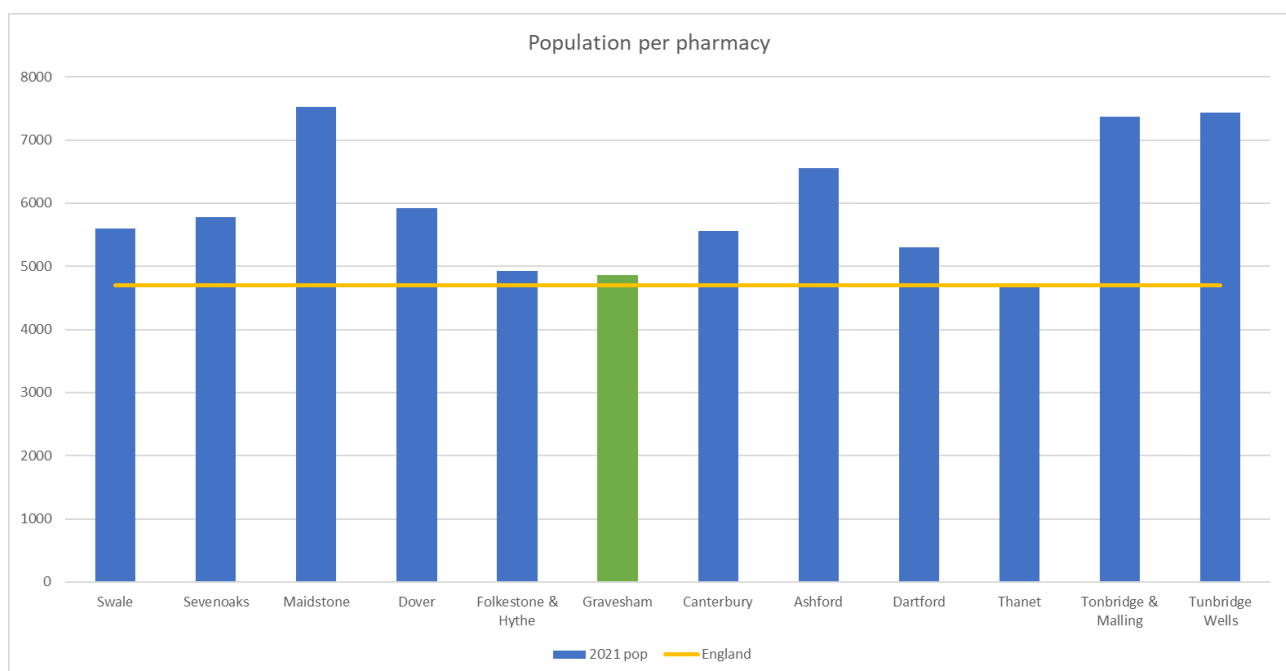
There are a considerable number of care homes in the Gravesham locality. Patients who are looked after in a care home setting are often high users of medicines. However, because of the nature of their care, they rarely access pharmaceutical services individually, leaving this to be carried out by the care home staff. More recently care home organisations do not use local pharmacies for this service, favouring the large “hub” or “internet” pharmacies which specialise in this type of one-stop service. Therefore, there is not considered to be any relationship between the number of care homes and the need for local pharmaceutical services.

2. Necessary services: current provision within the locality

(All data presented in this section is for the financial year 2020/21 with the exception of lateral flow devices data which covers the 4 months from April 2021 to July 2021)

There are 22 Community pharmacies providing dispensing services in the Gravesham locality. That is one pharmacy per 4,858 head of population. Figure 36 below shows how this compares with the other localities of Kent.

Figure 36 Number of people per pharmacy in each locality



In addition, there are 2 dispensing GP practices in the locality.

The facts below indicate that the majority of prescriptions generated in the locality are dispensed in the locality. There are 13.8% of prescriptions generated in the area that are dispensed in neighbouring areas and a slightly smaller percentage that are generated outside the locality and dispensed by Gravesham locality community pharmacies.

- 943 outside prescribers dispense in Gravesham
 - 10% of all items dispensed in Gravesham
- 18 prescribers in Gravesham
 - 90% of all items dispensed in Gravesham
- 32 dispensers in Gravesham
 - 86.2% of all items prescribed in Gravesham
- 1,137 dispensers outside of Gravesham
 - 13.8% of all items prescribed in Gravesham

Pharmacy locality: Maps 1 and 2 above show the locality of the community pharmacies and GP dispensing practices.

Opening times

All pharmacies are open Monday to Friday. 18 of the pharmacies open at least one hour after 17:00 on weekdays. 17 are open on Saturdays and 3 open Saturday and Sunday. The weekly opening hours range from 40 to 100, with the average opening hours being 52 each week.

Table 38 below show the core and supplementary hours of each pharmacy ⁽⁶⁵⁾.

Table 38. Opening times for all pharmacies

Pharmacy	Total core weekly hours	Total supplementary weekly hours	Total weekly hours	Max. hours open after 5pm at least 1 day/week	Saturday hours	Sunday Hours
Kings Pharmacy	100	0	100	5.50	15	10
Asda Pharmacy	100	0	100	6	15	6
LloydsPharmacy	59.75	0	59.75	1.75	8.5	0
Boots the Chemists	40	17	57	0.50	8.5	6
Lloyds Pharmacy	40	16.50	56.50	1.50	4	0
Pender Pharmacy	40	13.50	53.50	1	8.5	0
Regent Pharmacy	40	13.50	53.50	1	8.5	0
Hill Pharmacy	39.50	12	51.50	1.50	4	0
Singlewell Pharmacy	40	10	50	2	5	0
Darnley Pharmacy	40	10	50	2	0	0
Lion Pharmacy	40	9	49	1	4	0

Table 38 continued

Pharmacy	Total core weekly hours	Total supplementary weekly hours	Total weekly hours	Max. hours open after 5pm at least 1 day/week	Saturday hours	Sunday Hours
Lawsat Pharm Ltd	43.50	3.50	47	1	4.5	0
Istead Rise Pharmacy	40	6	46	1	6	0
Williams Chemists	40	5.75	45.75	1.25	5.75	0
Echo Pharmacy	40	5	45	2	0	0
Pender Chemist	40	3.50	43.50	0.50	6	0
R S Bains	40	2.75	42.75	1	4	0
Vigo Pharmacy	42.75	0	42.75	0.50	4	0
Meopham Pharmacy	40	1.50	41.50	0.50	4	0
NB Pharmacy Ltd	40	0	40	1	0	0
Gravesend Medical Centre Pharmacy	40	0	40	1	0	0
Nicholson & Keep	40	0	40	1	0	0

The dispensing GP practices Gravesham locality are:

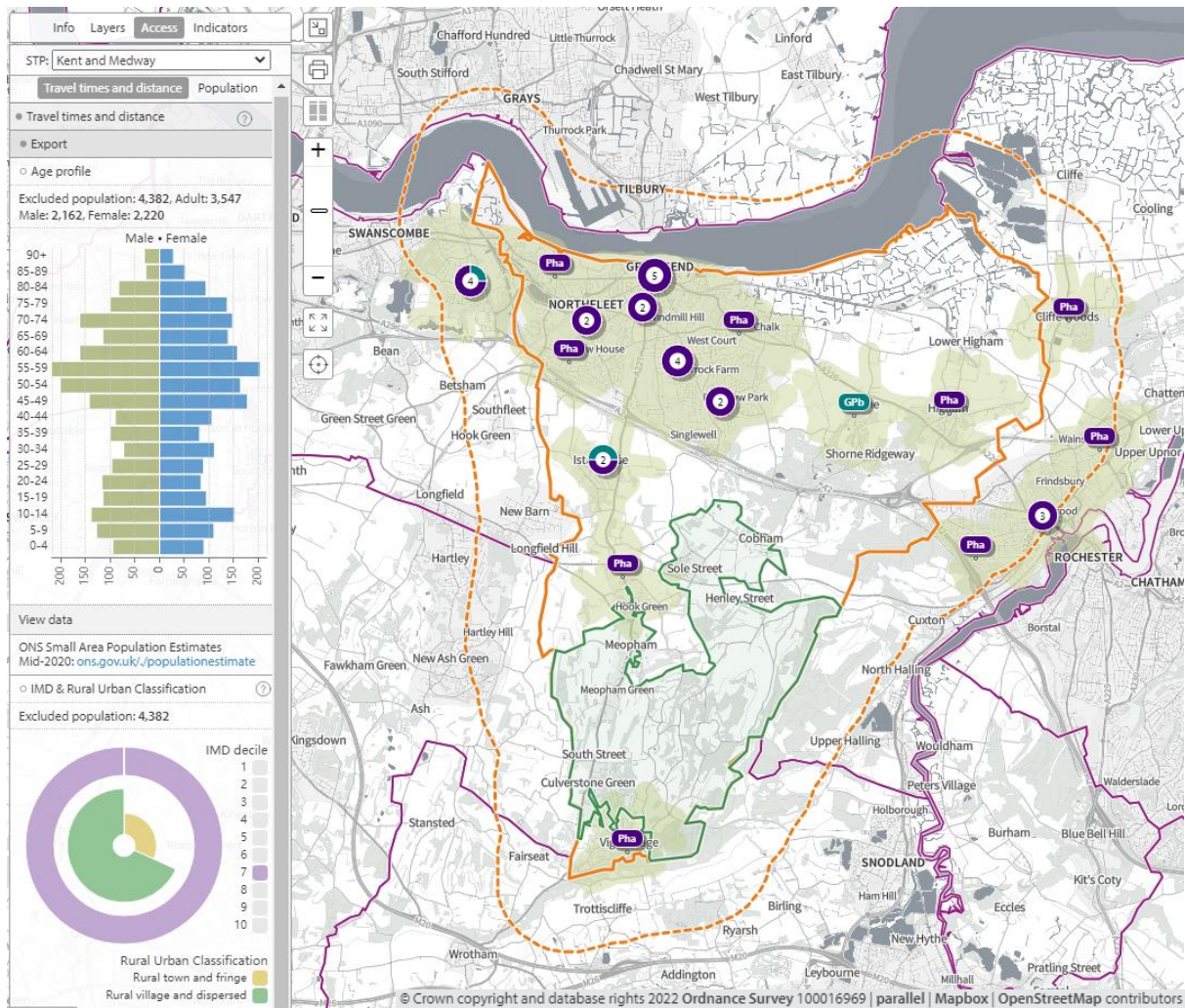
- Instead Rise surgery DA13 9BL
- Shorne Village Surgery DA12 3DY

Travel times

Access during core opening times is shown in the maps (4-7) below.

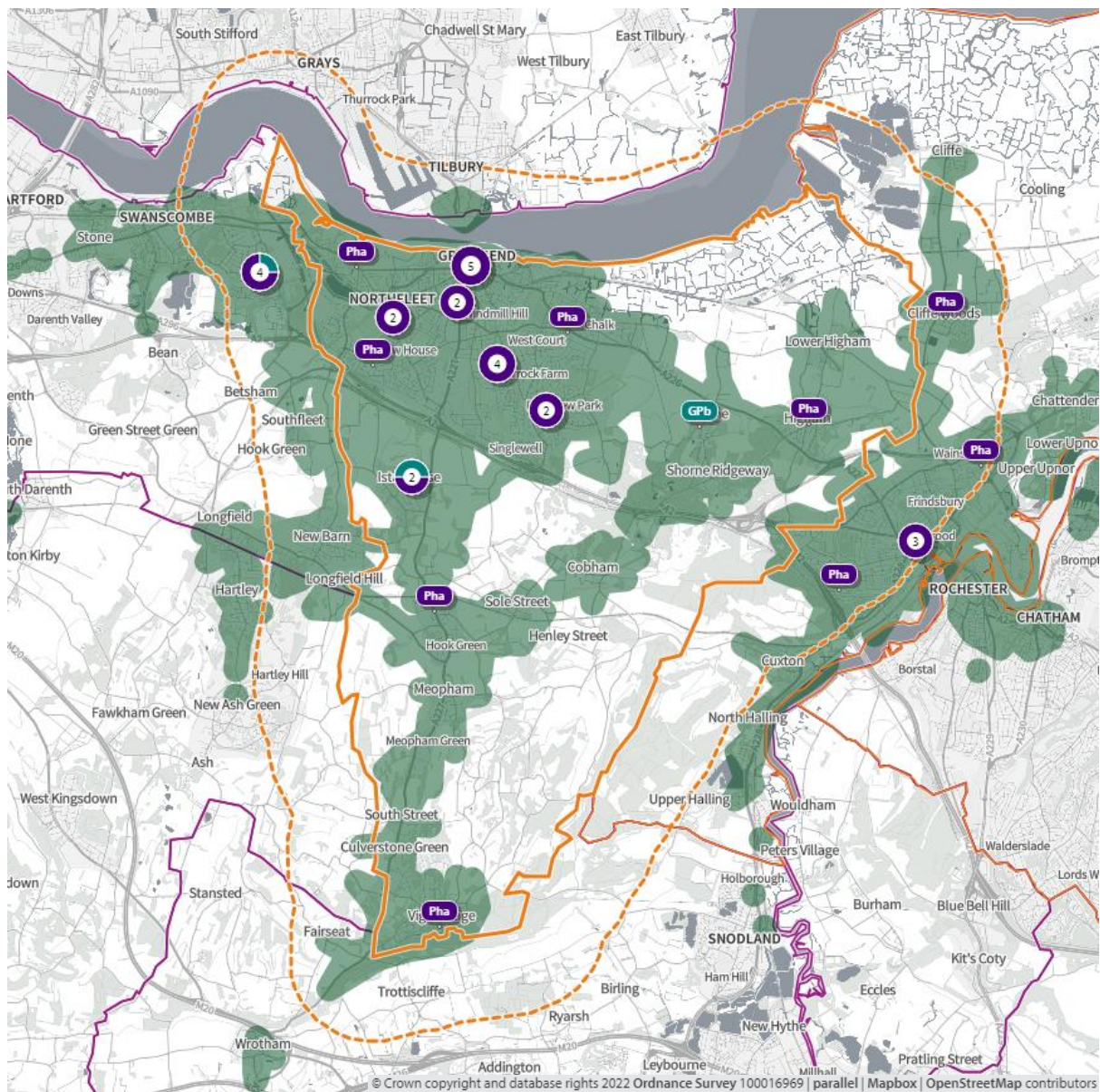
In **map 105**, below, the olive-green shaded areas are within a 20-minute walk of a community pharmacy/dispensing GP practice. 4,382 (4.1%) people are not within a 20-minute walk. 5 pharmacies do not open on Saturdays but this does not affect the population within a 20-minute walk on a Saturday. 6% (1,105) of 65+ population is not within a 20-minute walk of a community pharmacy or dispensing GP practice

Map 105. Locations of community pharmacies/dispensing GPs and lower super output areas not within a 20-minute walk



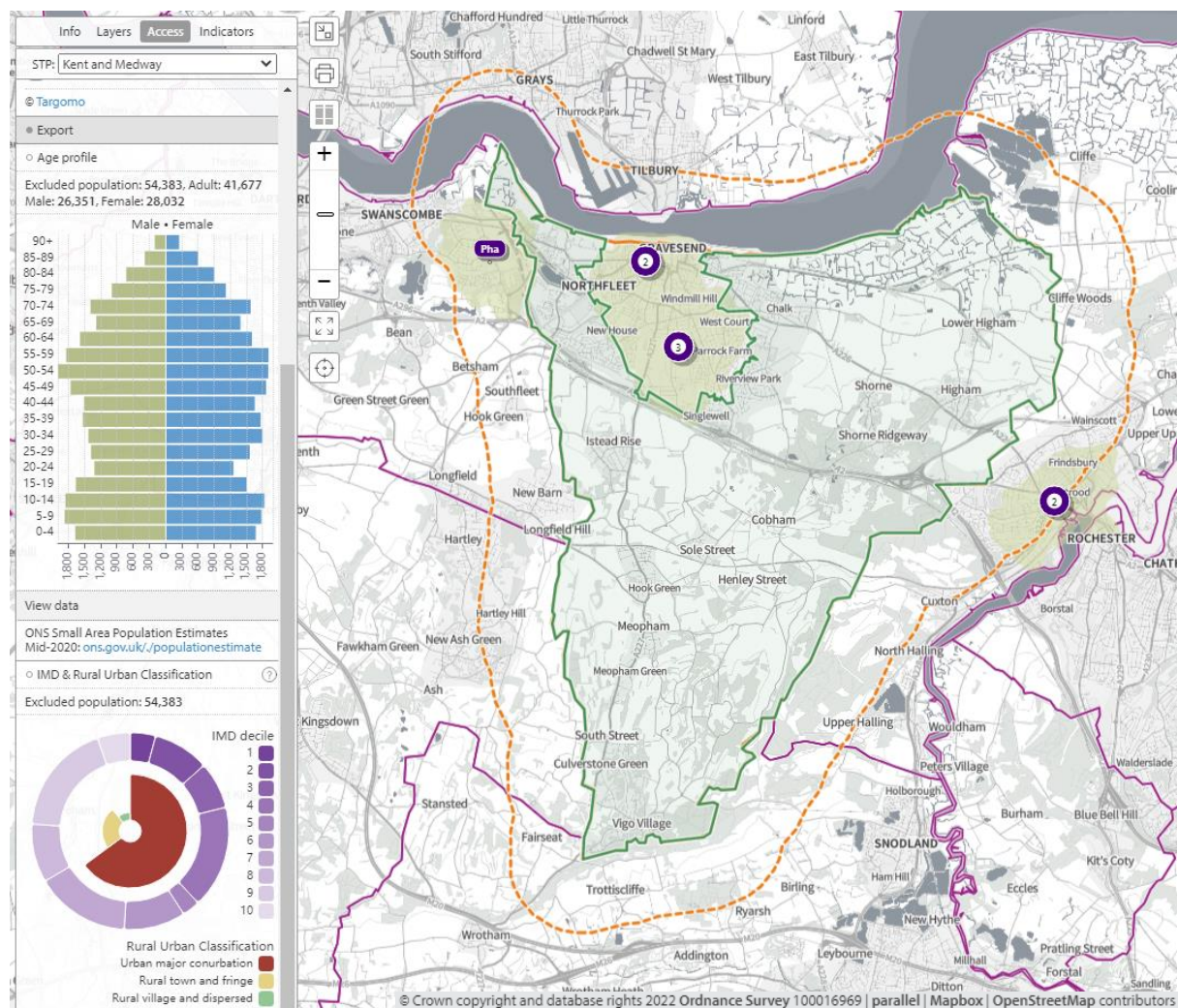
In **map 106**, below, the green shaded areas are within 20-minutes by public transport of a community pharmacy/dispensing GP practice. The entire population (by LSOA) is within 20-minutes by public transport of a community pharmacy/dispensing GP practice.

Map 106. Locations of community pharmacies/dispensing GPs and areas within 20-minutes by public transport on weekday mornings



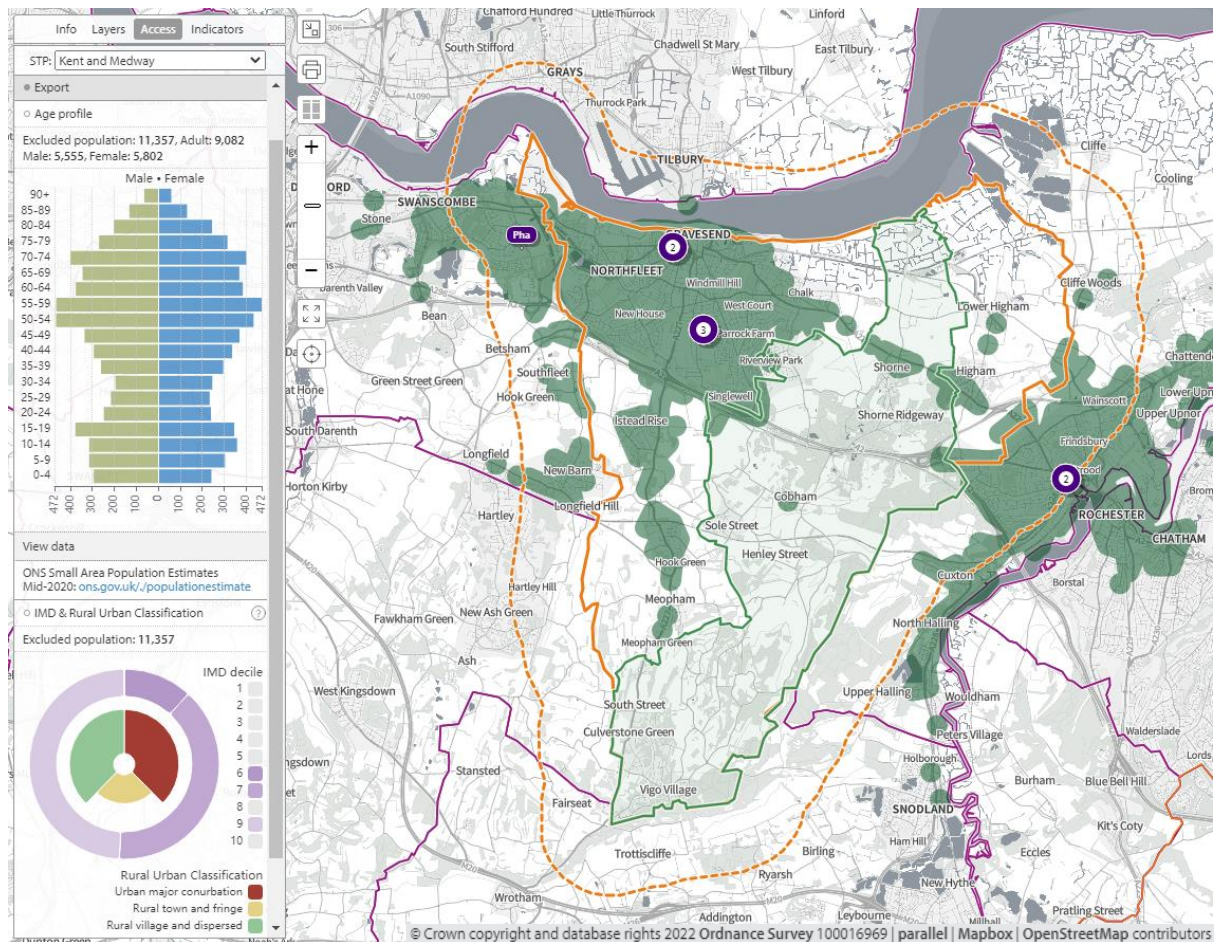
In **map 107, below**, the olive-green shaded areas are within a 20-minute walk of a community pharmacy that opens until at least 7pm on weekdays. 54,383 (48%) people are not within a 20-minute walk of a community pharmacy that opens until at least 7pm on weekdays. 38.7% (10,834) of 65+ population is not within a 20-minute walk of a community pharmacy that opens until at least 7pm on weekdays.

Map 107. Locations of community pharmacies open until at least 7pm and lower super output areas not within a 20-minute walk



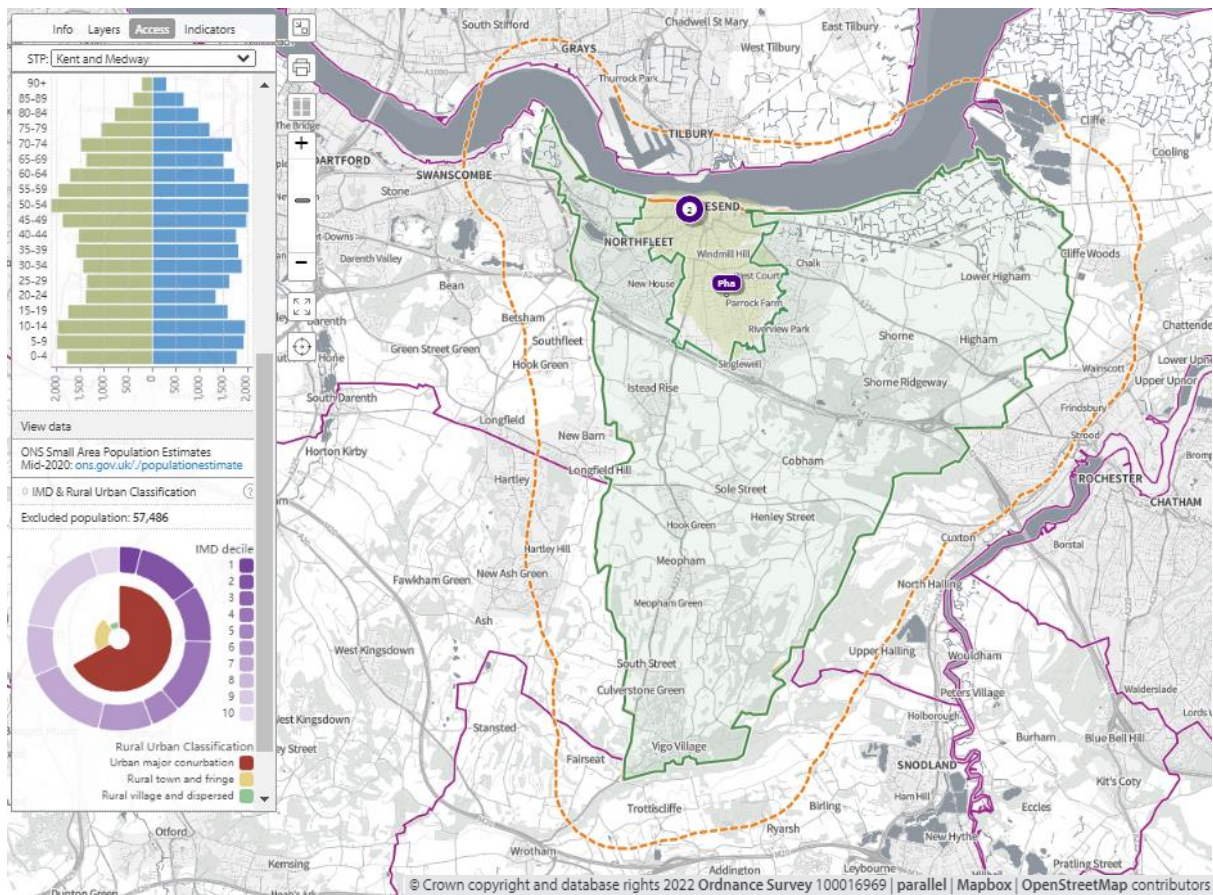
In **map 108**, below, the green shaded areas are within 20-minutes by public transport of a community pharmacy that opens past 7pm on weekdays. 11,357 (10.6%) people are not within 20-minutes by public transport that opens past 7pm on weekdays. 15.8% (2,935) of 65+ population is not within 20 minutes by public transport of a community pharmacy that opens past 7pm on weekdays.

Map 108. Locations of community pharmacies open until at least 7pm and lower super output areas not within 20-minutes by public transport on weekday evenings



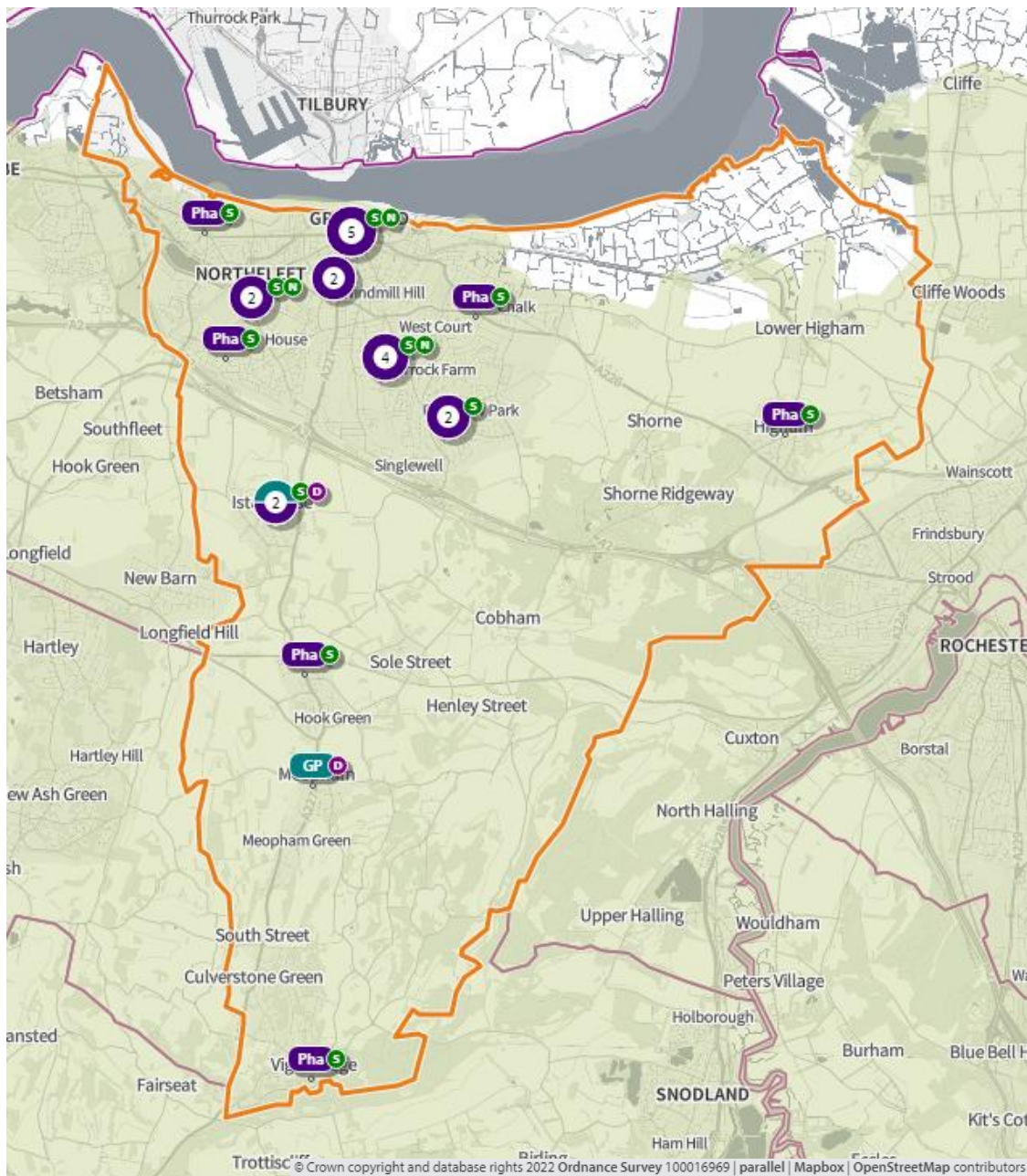
In **map 109**, below, the olive-green shaded areas are within a 20-minute walk of a community pharmacy that opens on Sundays. 53.8% (57,486) of the population is not within a 20-minute walk of a community pharmacy that opens on Sundays. 62.6% (11,618) of 65+ population is not within a 20-minute walk of a community pharmacy that opens on Sundays

Map 109. Locations of community pharmacies open on Sundays and lower super output areas not within a 20-minute walk



In **map 111** below, access during **core opening hours, Saturdays and Sundays** is shown. The olive-green shaded areas are within a **20-minute drive** of a community pharmacy/dispensing GP practice. The entire population is within a 20-minute drive.

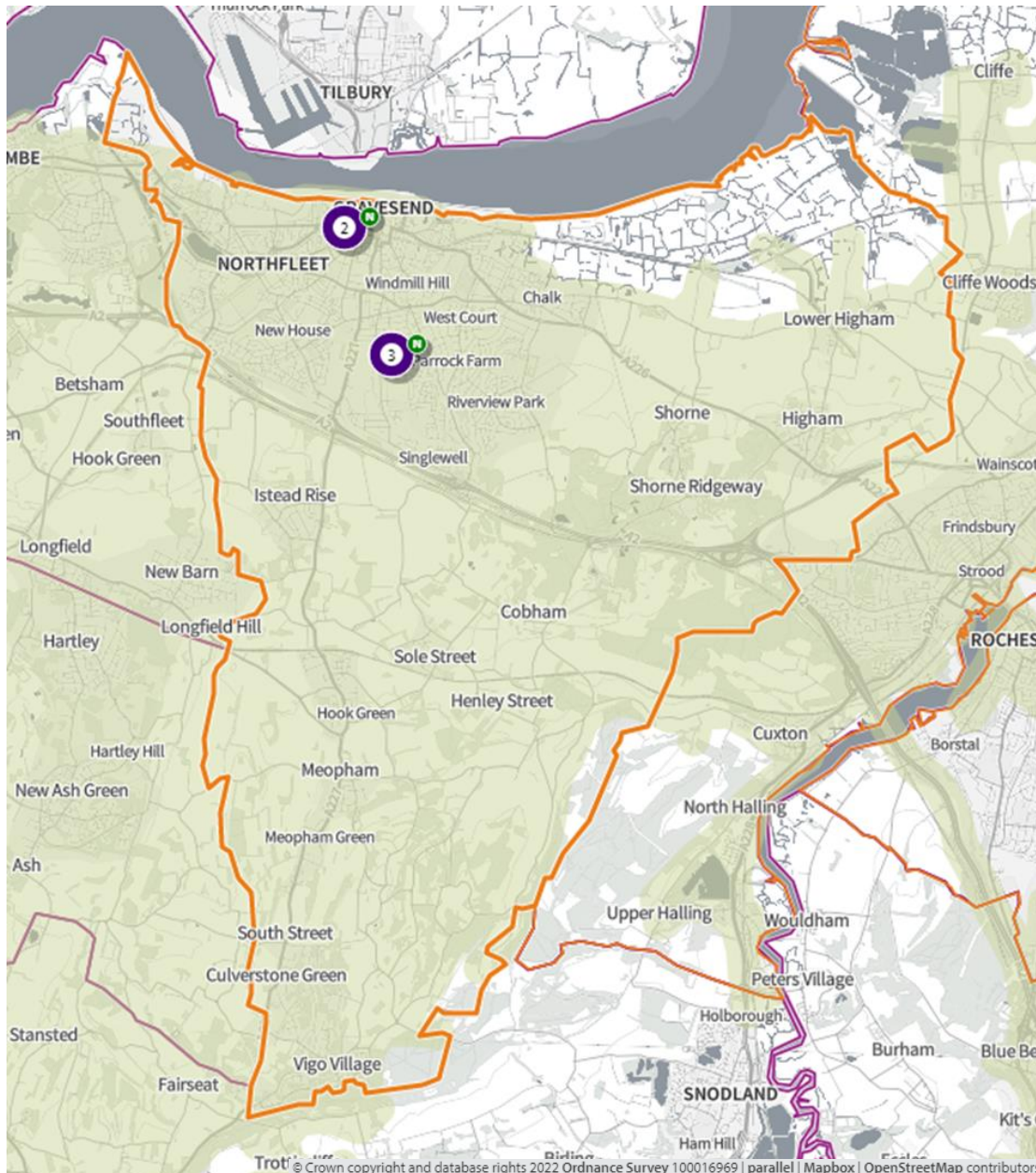
Map 111. Locations of community pharmacies, dispensing GPs and areas within 20-minutes by car



S = open Saturday N = open Sunday

In **map 112** below, the green shaded areas are within **20-minutes by car** of a community pharmacy that opens **until at least 7pm on weekdays**. The entire population is within a 20-minute drive.

Map 112. Locations of community pharmacies open until at least 7pm on weekdays and areas within 20-minutes by car



3. Necessary services: current provision outside the localities area ⁽¹⁾

The information below indicates the number of prescriptions dispensed in and outside of the locality.

- 1.99 million items prescribed in Gravesham
 - 1.7 million items dispensed in Gravesham
 - 1.47 (86%) million via Electronic Prescription Service
 - 274,809 (13.8%) dispensed outside of the district
 - 154,688 Dartford
 - 56,500 distance selling
 - 22,274 Bexley
 - 16,698 Medway

- 1.9 million items dispensed in Gravesham
 - 1.77 million items dispensed by community pharmacies in Gravesham
 - 131,124 dispensed by 10 GP practices:
 - Meopham Medical Centre – 60,930
 - Downs Way Medical Practice – 52,985
 - 190,874 items prescribed outside borough i.e. more going out than coming in

Some residents choose to access contractors outside both the locality and the Health and Wellbeing Board's area in order to access services:

- Offered by dispensing appliance contractors
- Offered by distance selling premises
- Which are located near to where they work, shop or visit for leisure or other purposes.

Taking into account this choice of pharmacy outside of the locality, the majority of residents can access a pharmacy within the locality

4. Other relevant services: current provision

The following advanced services were delivered by pharmacies in the Gravesham locality in 2020/21.

Table 39. Number of pharmacies providing advanced services

Advanced service name	No. of pharmacies
New Medicine Service	16
Appliance Use Review	0
Hypertension Service [‡]	18
Stoma Appliance Customisation	2
Community Pharmacist Consultation Service (CPCS) [‡]	21
Hepatitis C Antibody Testing Service	0
Seasonal Influenza Vaccination Advances Service	20
Covid Vaccination Service*	0
Covid Home Delivery Service*	20
Covid lateral flow device distribution*	22

*Specific to the Covid-19 pandemic

[‡]Services introduced during the year of study

Please note that three services were specific to the Covid-19 pandemic (Covid vaccination, homedelivery and lateral flow device distribution services) and that others were new services (CPCS, Hypertension service) introduced within the year. There is, however, good participation and early adoption of new services from pharmacies in this locality.

5. Other NHS services

The Strategic Health Asset Planning and Evaluation (SHAPE) web application provides the following information:

- Downs Way Medical Practice, Gravesend is open until 8.30pm on Wednesdays and Thursdays
- Parrock Street Surgery is open until 8pm on Tuesdays and Wednesdays
- Pelham Medical Practice: St. Gregory's Crescent Surgery is open until 8pm on Tuesdays and Wednesdays
- Shrubbery Surgery is open until 8pm on Mondays and Tuesdays
- Springhead Health opens from 3pm until 6.30pm but on Tuesdays and Thursdays remains open until 8pm

There is an urgent treatment centre situated in the Gravesham Community Hospital. It is open 8am to 8pm every day of the year.

There is a walk-in centre at The White Horse Surgery which is open 8am-8pm every day.

There are also drug and alcohol services, Kent and Medway NHS Hospital Trusts and Kent and Medway NHS and Social Care Partnership Trust and Kent Community Health NHS Foundation Trust with services that generate prescriptions that are dispensed by community pharmacies in this locality.

The number of prescriptions from these services is shown below:

- 12 pharmacies dispensed a total of 3,663 (mean = 305, range = 2-1,309) items from drug and alcohol services
- 22 pharmacies and 1 GP practices dispensed a total of 1,013 (mean = 44, range = 1-90) items from Kent and Medway NHS and Social Care Partnership Trust (secondary mental health services)
- 19 pharmacies dispensed a total of 68 items (mean = 3.6, range = 1-12) from KCHFT
- 22 pharmacies and 1 GP practices dispensed a total of 3,414 items (mean = 148, range = 13-411) from Kent and Medway hospitals

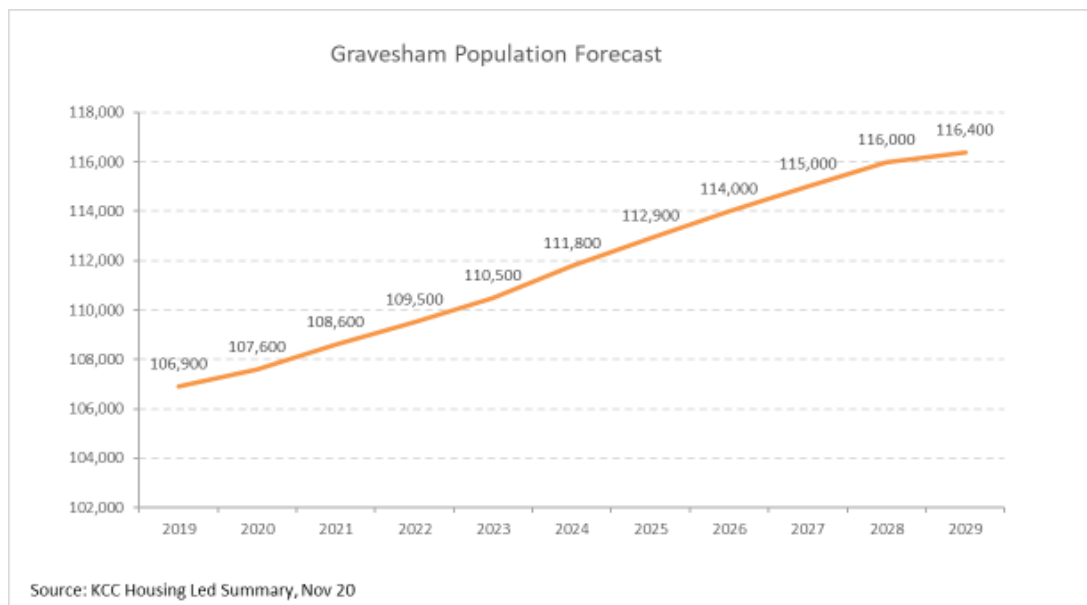
6. Choice with regard to obtaining pharmaceutical services

As can be seen from sections 2 and 3, those living within the locality and registered with one of the GP practices generally choose to access one of the pharmacies in the locality in order to have their prescriptions dispensed or, if eligible, to be dispensed to by their practice. Those that look outside the locality usually do so either to access a neighbouring pharmacy, or a dispensing appliance contractor or distance selling premises outside of the Health and Wellbeing Board's area.

7. Developments

Figure 37 below shows the predicted increase in the population of the Gravesham locality continuing to grow over the lifetime of this PNA. By 2025 it is estimated that each pharmacy will serve a population of 5,131.

Figure 37 Gravesham population forecast



 **1 pharmacy per 5,131 people in 2025**

The population of Gravesham district is projected to increase by 6% to 112,900 in 2025. This is an increase of approximately 300 people per pharmacy from 2020.

Map 113 below shows where there are major housing developments planned in the coming years and the table indicates the number of dwellings planned for each site.

Map 113. Location of housing developments

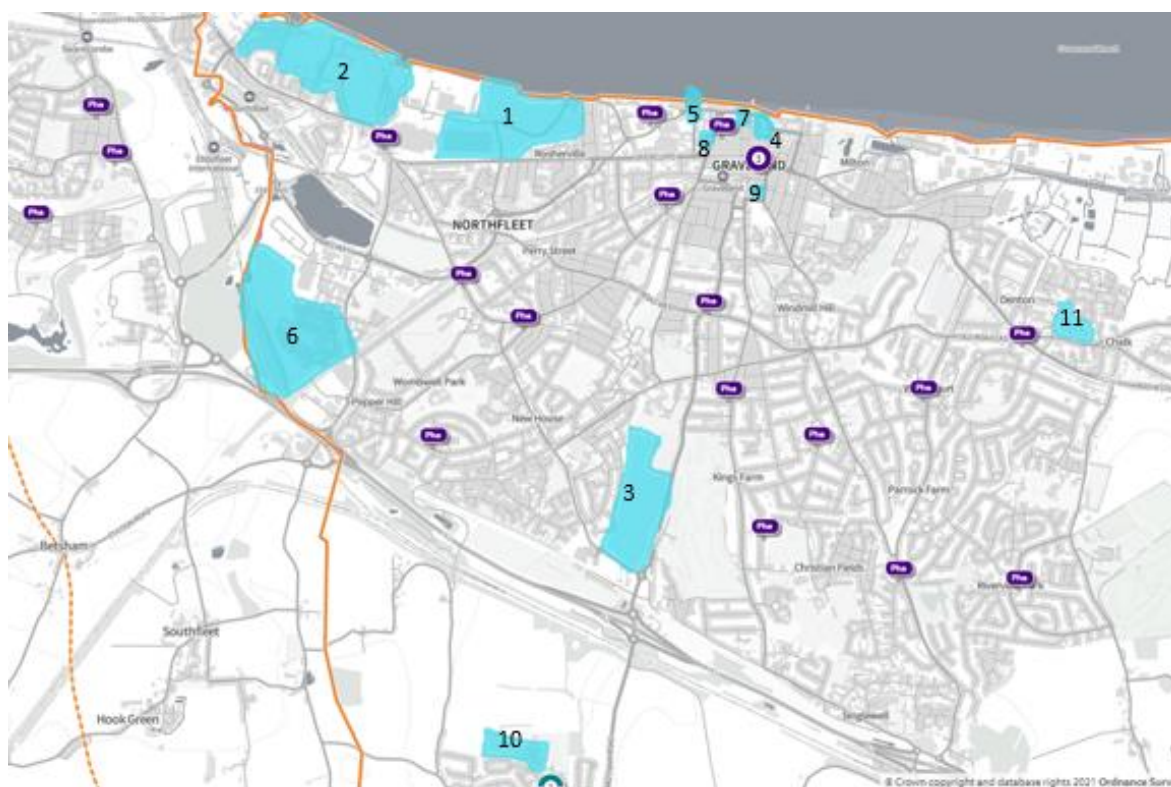
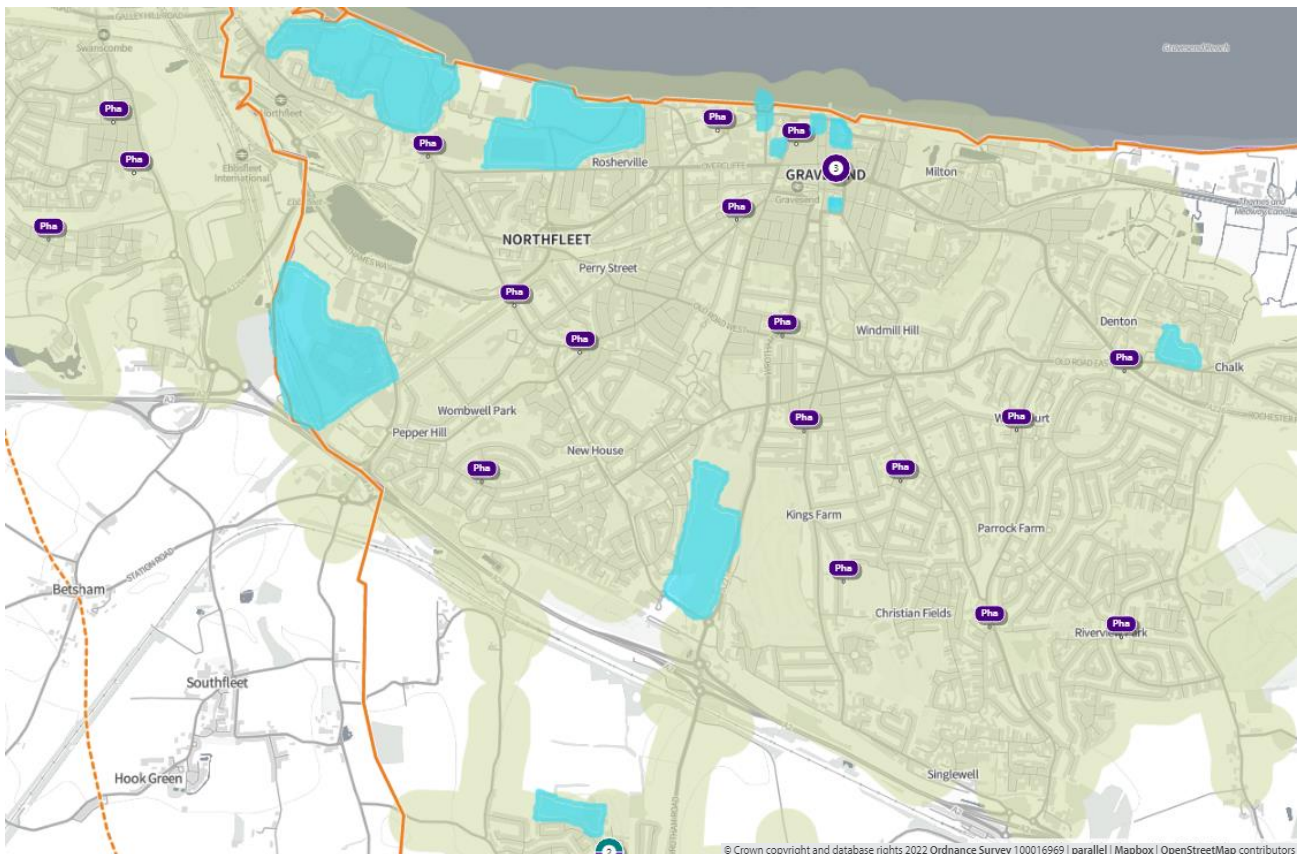


Table 40. Proposed housing developments – number of dwellings per year at each development

Site Name	20/21	21/22	22/23	23/24	24/25	25/26	26/27	27/28	28/29	29/30	2025	2030
1. Northfleet Embankment East	0	140	73	128	158	99	0	0	0	0	499	598
2. Northfleet Embankment West	0	50	50	50	100	100	100	82	0	0	250	532
3. Land At Coldharbour Road Northfleet	50	50	50	50	50	50	50	45	0	0	250	395
4. The Charter	0	0	242	0	0	0	0	0	0	0	242	242
5. Clifton Slipways West Street	0	0	106	0	121	0	0	0	0	0	227	2276.
6. Springhead (Ebbsfleet)	50	50	50	50	16	0	0	0	0	0	216	216
7. St Georges Phase 2	0	0	0	0	150	0	0	0	0	0	150	150
8. Former Gravesend & North Kent Hospital	0	0	0	115	0	0	0	0	0	0	115	115
9. Former Lord Street Car Park	0	106	0	0	0	0	0	0	0	0	106	106
10. Land north of The Drove Way, Istead Rise	0	0	0	0	75	0	0	0	0	0	75	75
11. Land at North Kent College, Lower Higham Road	0	0	0	0	75	0	0	0	0	0	75	75

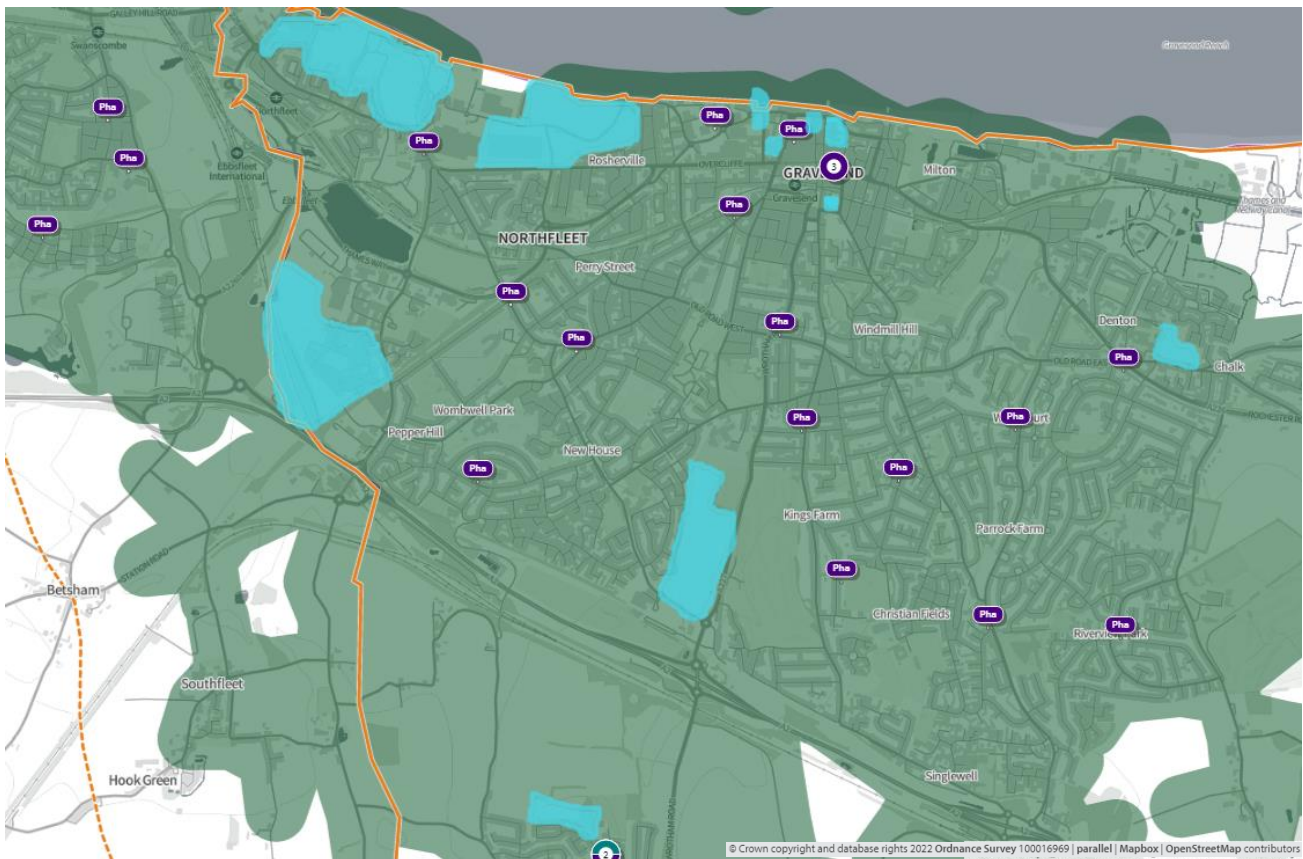
In **map 114**, below, the green shaded areas are within a 20-minute walk of a community pharmacy/dispensing GP practice and the blue shaded areas are locations of major housing developments.

Map 46. Location of community pharmacies/dispensing GPs, proposed housing developments, and areas within a 20-minute walk of a community pharmacy/dispensing GP



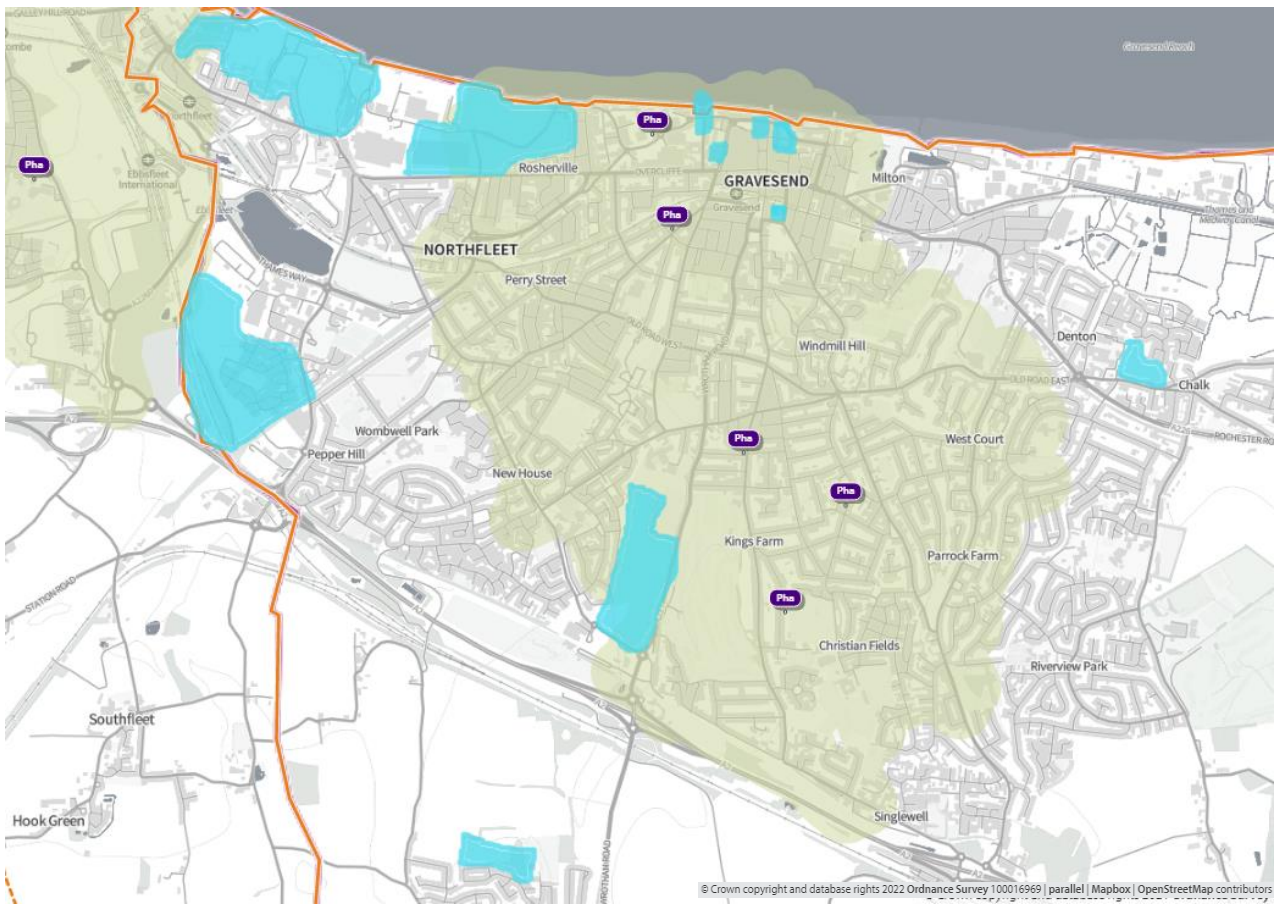
In **map 115, below**, the green shaded areas are within 20-minutes by public transport of a community pharmacy/dispensing GP practice and the blue shaded areas are locations of major housing developments.

Map 115. Location of community pharmacies, proposed housing developments, and areas within 20 minutes of a community pharmacy by public transport on weekday mornings



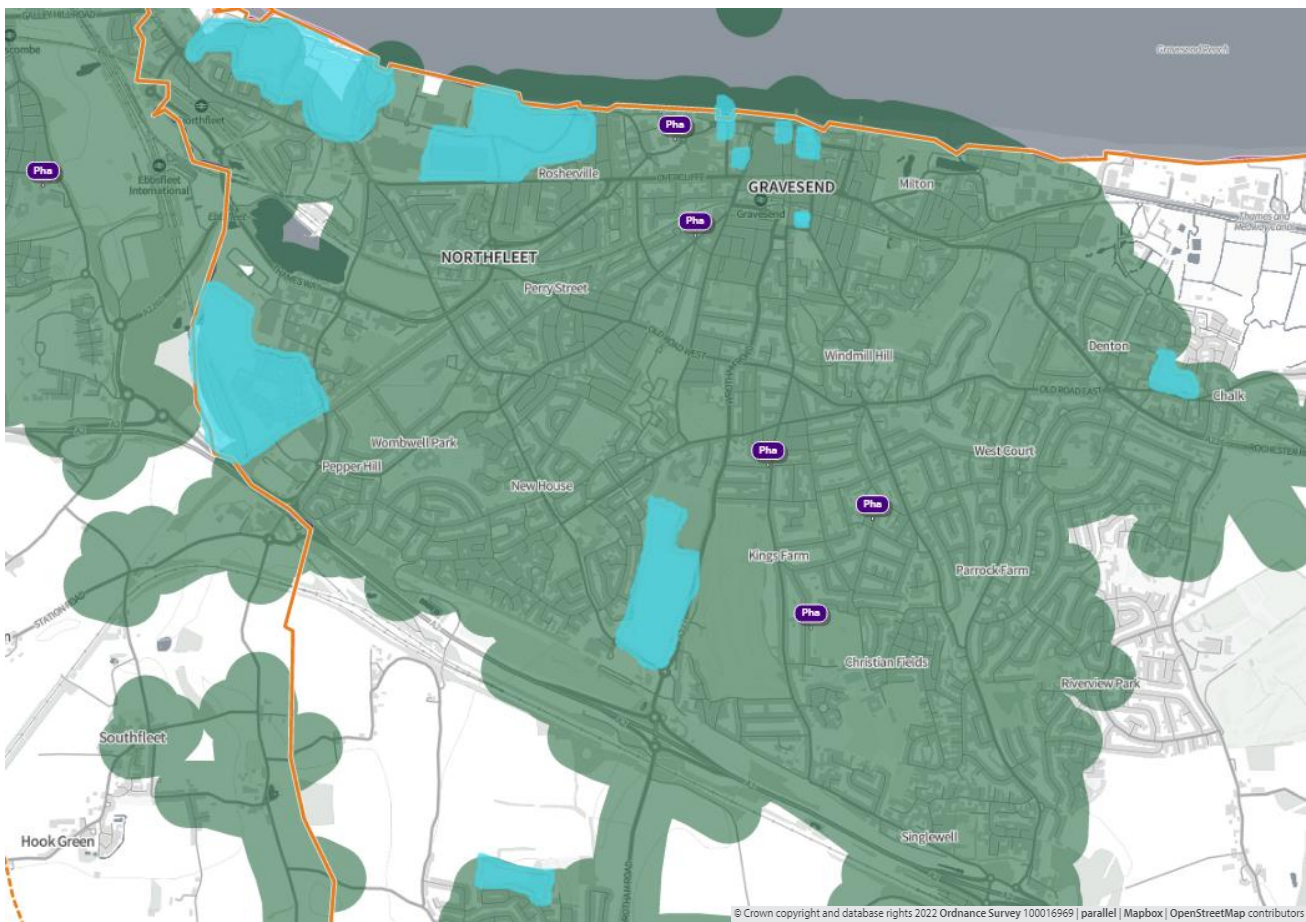
In **map 116**, below, the green shaded areas are within a 20-minute walk of a community pharmacy that is open until at least 7pm and the blue shaded areas are locations of major housing developments.

Map 116. Location of community pharmacies open until at least 7pm, proposed housing developments, and areas within 20 minute walk of a community pharmacy



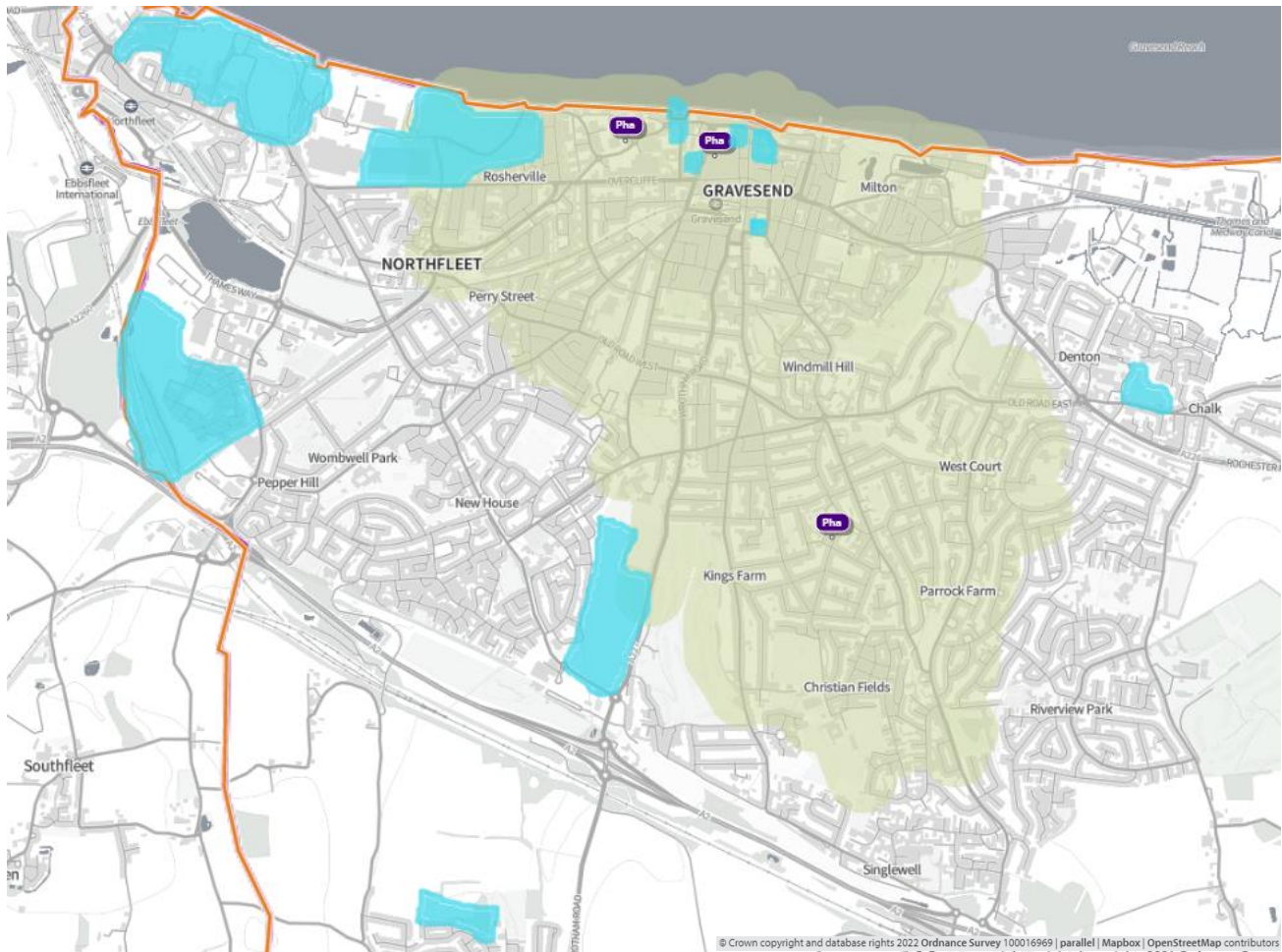
In **map 117**, below, the green shaded areas are within 20-minutes by public transport of a community pharmacy that is open until at least 7pm and the blue shaded areas are locations of major housing developments.

Map 117. Location of community pharmacies open until at least 7pm, proposed housing developments, and areas within 20 minutes of a community pharmacy by public transport on weekday evenings



In **map 118**, below, the green shaded areas are within 20-minutes' walk of a community pharmacy that is open on Sundays. Blue shaded areas are locations of major housing developments.

Map 118. Location of community pharmacies, proposed housing developments, and areas within a 20-minute walk of a community pharmacy that is open on Sundays

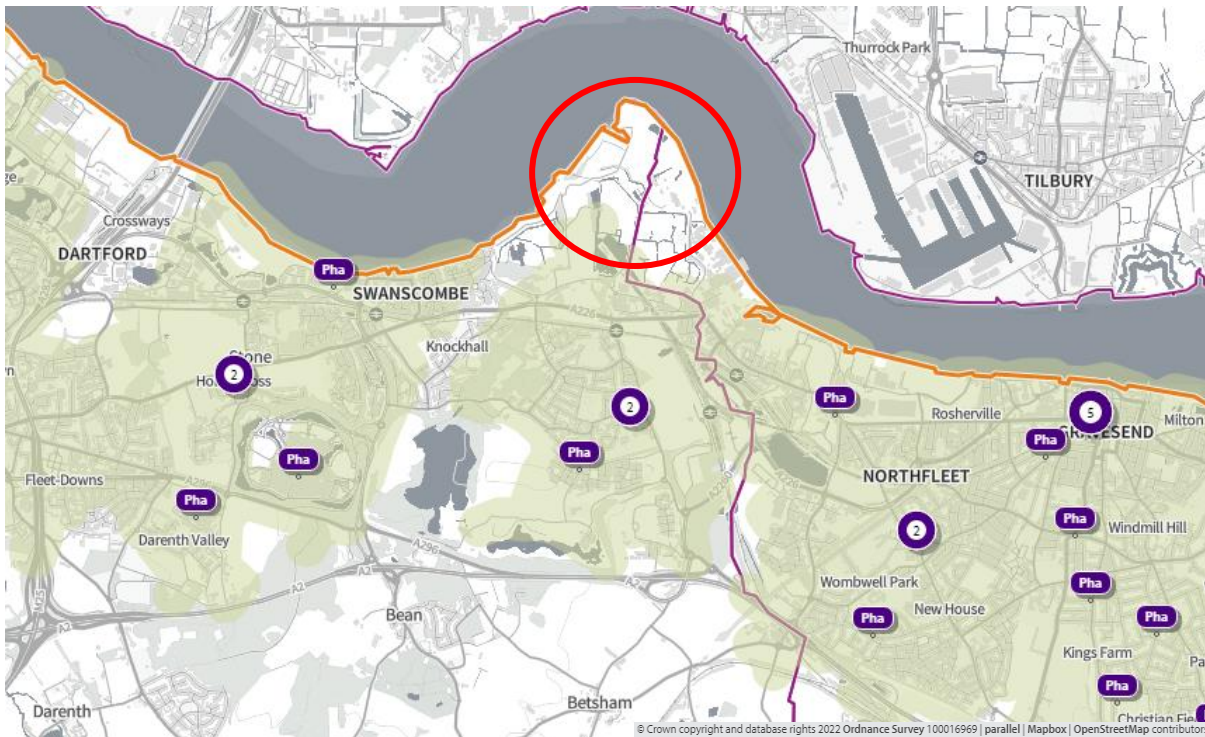


The London Resort ⁽⁵⁸⁾

The construction of the London Resort will require a large workforce; up to 5,000 construction workers are expected on-site in the peak year of Gate One construction (2023). Of these, however, up to half are expected to live too far from the site to commute daily and will seek temporary accommodation close to the site. There are three preliminary options for the London Resort strategy: rely on existing accommodation options; purchase or rent a decommissioned cruise ship (likely with 1,000 to 2,000 room capacity); and/or locate mobile homes (500 – 700 rooms) on-site. There is estimated to be up to 3,100 construction workers seeking temporary accommodation in the area in 2023.

Map 119 below shows the proposed location of The London Resort. The green shaded areas are within a 20-minute walk of the pharmacies displayed on the map. Construction workers living on-site will be within a 20-minute walk of the nearest pharmacy. Two pharmacies in the Dartford locality are within a 20-minute walk of the site. Neither of these pharmacies responded to the contractors questionnaire so it is unknown whether these pharmacies feel they have capacity to meet increased demand for services or medicines. There is a pharmacy in the Gravesham locality that is just beyond a 20-minute walk of The London Resort site so it is likely that this pharmacy will meet some of the demand from the temporary increase in local population. *Please note at the time of writing (April 2022) a new planning submission has been made for the London Resort development so the time scales stated may alter.*

Map 119. Proposed location of The London Resort



8. Necessary services: - Gaps in provision

No gaps in the provision of necessary services have been identified.

9. Improvements or better access: Gaps in provision

Neither Meopham nor Vigo pharmacy provide the new medicine service. Approximately 4% are not within 20 minutes by public transport of a pharmacy providing new medicine service.

Hill pharmacy is nearest to the majority of new housing development and The London Resort but has indicated that it has capacity to meet an increased demand for services and medicines

There are no pharmacies that provide Hep C. Only 5.3% of people within the locality are within 20 minutes by public transport of a pharmacy providing Hep C. However, by car 99% are within 20 minutes