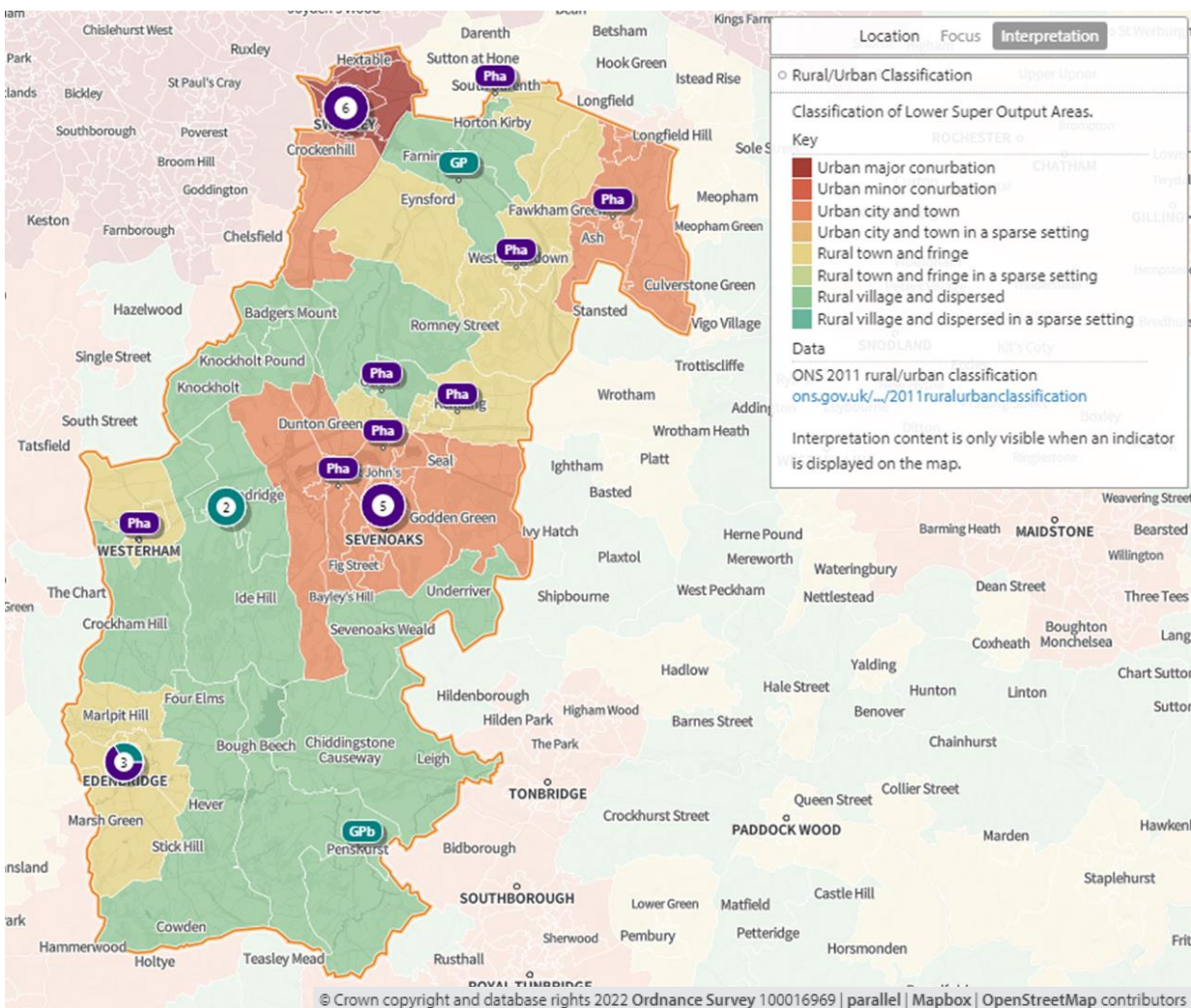


15 Sevenoaks Locality

1. Key Facts

Sevenoaks is a local government district in the west of the county. It covers an area of 370.4 square km. The district is relatively sparsely populated with 3.3 persons per hectare, second only to Ashford district (2.3 persons per hectare)⁽³⁾. Map 139 shows that there are two main urban centres, Sevenoaks and Swanley, the latter being much more densely populated. There are two small towns in the south-west of the district but much of the south is rural. The north of the district borders London's urban sprawl.

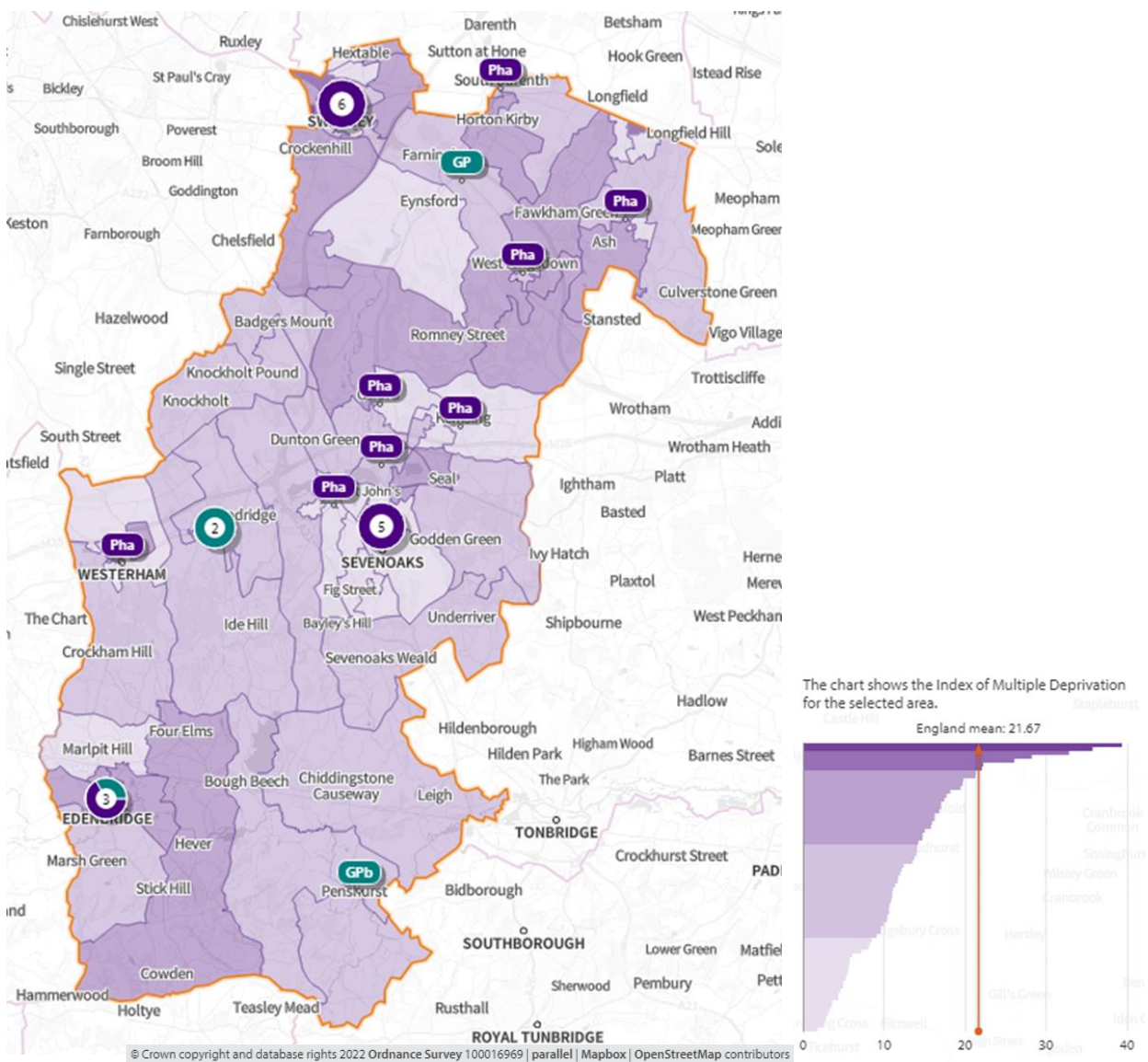
Map 139. Rural/urban classification of lower super output areas



Deprivation

Map 141 below shows the areas of deprivation in the Sevenoaks District locality. Deprivation is low across the district and average deprivation is the second lowest in Kent. Employment rates are the highest in Kent⁽⁶³⁾ and educational attainment are second highest⁽⁶⁴⁾.

Map 141. Deprivation of lower super output areas overlaid with locations of pharmacies and dispensing doctors



Language

English is the main language for all people aged 16 or over in 96.4% of households in the district. 1.2% of households have no people with English as the main language⁽²⁾.

Home ownership

73% of houses are owned either outright (38%) or with a mortgage (35%). The average number of occupants per household is 2.4, the same as the Kent average ⁽²⁾.

Age Distribution

The average age of Sevenoaks district residents is 42.3, slightly higher than the Kent average of 41.4. 21.6% of the population is over 65 and 20.3% 0-15 ⁽²⁾. Life expectancy at birth is 81 for males and 84.2 for females ⁽⁴⁶⁾.

Economy

By industry, the top three employers in the Sevenoaks district are wholesale and retail trade (13.5%), construction (12.5%), and human health and social work activities (9.9%) ⁽¹⁵⁾. In comparison to Kent as a whole, the district has a much higher proportion of construction and professional, scientific jobs ⁽¹⁵⁾.

Car Ownership

13% of households in Sevenoaks district do not have a car or van in the household, this is the lowest in Kent ⁽¹³⁾.

Care Homes

There are a thirteen of care homes in the Sevenoaks locality. Patients who are looked after in a care home setting are often high users of medicines. However, because of the nature of their care, they rarely access pharmaceutical services individually, leaving this to be carried out by the care home staff. More recently care home organisations do not use local pharmacies for this service, favouring the large “hub” or “internet” pharmacies which specialise in this type of one-stop service. Therefore, there is not considered to be any relationship between the number of care homes and the need for local pharmaceutical services.

2. Necessary services: current provision within the locality

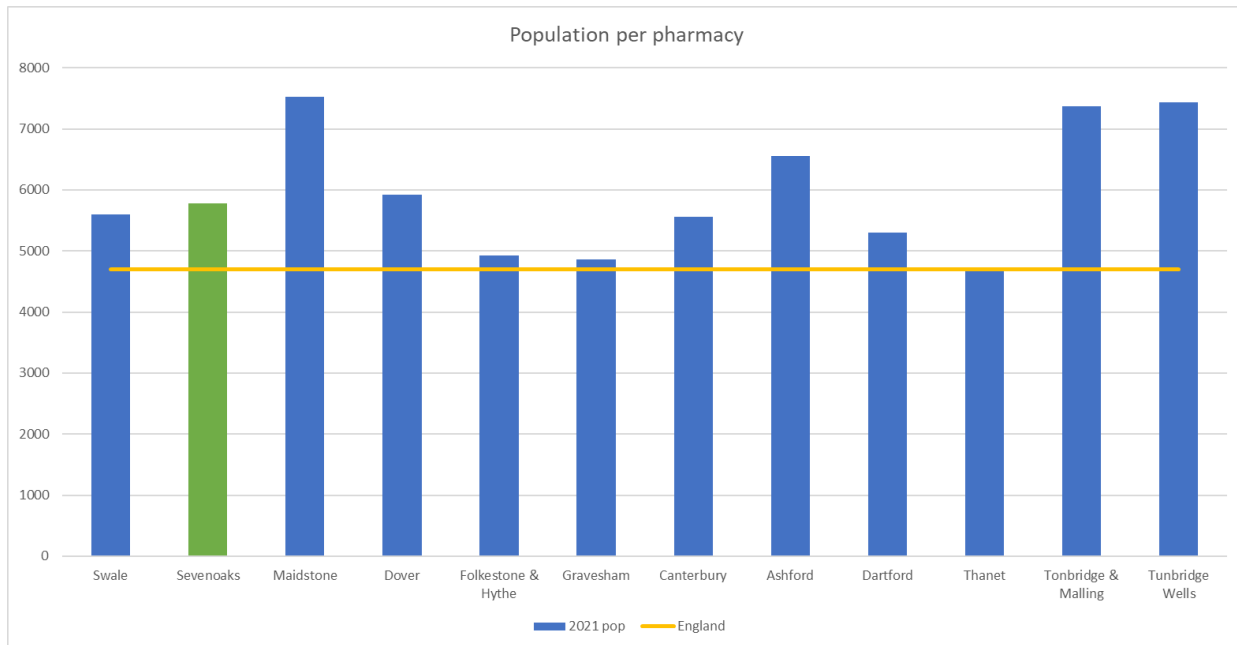
(All data presented in this section is for the financial year 2020/21 with the exception of lateral flow devices data which covers the 4 months from April 2021 to July 2021)

There are 21 Community pharmacies providing dispensing services in the Sevenoaks locality.

In addition, there are five dispensing GP practices in the locality.

Each pharmacy provides on average services for 5,780 of the area’s population. Figure 40 below shows how this compares with the other localities of Kent.

Figure 40 Number of people per pharmacy in each locality



The facts below indicate that the majority of prescriptions generated in the locality are dispensed in the locality. There is a small percentage of prescriptions generated in the area that are dispensed in neighbouring areas and an even smaller percentage that are generated outside the locality and dispensed by Sevenoaks community pharmacies ⁽¹⁾.

- 1,219 outside prescribers dispense in Sevenoaks
 - 4.3% of all items dispensed in Sevenoaks
- 12 prescribers in Sevenoaks
 - 95.7% of all items dispensed in Sevenoaks
- 32 dispensers in Sevenoaks
 - 90.4% of all items prescribed in Sevenoaks
- 1,262 dispensers outside of Sevenoaks
 - 9.6% of all items prescribed in Sevenoaks

Pharmacy locality: Maps 1 and 2 above show the locality of the community pharmacies and GP dispensing practices.

Opening times:

All are open Monday to Friday, with 21 opening on Saturdays and 4 opening on Saturdays and Sundays. This gives a weekly opening hours range of 41.5 to 101 hours and an average of 58 hours of opening each week. Sixteen of these pharmacies open for at least one hour after 5pm on weekdays.

Table 54 below show the core and supplementary hours of each pharmacy ⁽⁶⁵⁾.

Table 54. Opening times for all pharmacies

Pharmacy	Total core weekly hours	Total supplementary weekly hours	Total weekly hours	Max. hours open after 5pm at least 1 day/week	Saturday hours	Sunday Hours
Lloyds Sainsbury's	101	0	101	5.5	15	6
Asda Pharmacy	100	0	100	6	15	6
Thales Pharmacy	100	0	100	6	15	5
Boots, High St., Sevenoaks	40	23	63	1	9.5	6
Well	40	19	59	2	4	0
Boots, London Rd., Sevenoaks	40	18	58	2	8	0
Otford Pharmacy	40	16.75	56.75	1.5	6.75	0
Lloyds, West Kingsdown	40	13.5	53.5	1	8.5	0
Boots, Swanley	40	10.5	50.5	0.5	8	0
Boots, Edenbridge	40	5	45	0.5	7.5	0
Paydens, London Rd., Sevenoaks	40	13.5	53.5	1	8.5	0

Table 54 continued

Pharmacy	Total core weekly hours	Total supplementary weekly hours	Total weekly hours	Max. hours open after 5pm at least 1 day/week	Saturday hours	Sunday Hours
Swanley Pharmacy	40	13	53	2	8	0
Paydens, Edenbridge	40	10.5	50.5	0.5	8	0
Village Pharmacy, Dartford	40	13	53	1	8	0
Kemsing Pharmacy	40	9	49	1	4	0
Day Lewis Pharmacy	40	9	49	1	4	0
Village Pharmacy, Hextable	40	8.5	48.5	1.5	4	0
Day Lewis Chemist	40	4	44	1	4	0
Sevenoaks Pharmacy	40	1.5	41.5	0.5	4	0
Hobbs Pharmacy	40	6	46	0.5	3.5	0
Bat & Ball Pharmacy	40	4	44	1	4	0

There are the following dispensing GP practices in the Sevenoaks locality:

- Brasted Practice TN16 1HU
- Edenbridge Medical Practice TN8 5ND
- The Surgery, Penhurst TN11 8BP
- The Medical Practice (Sundridge) TN14 6EH
- Braeside Surgery, Farringham DA4 0JH

Access to pharmacies

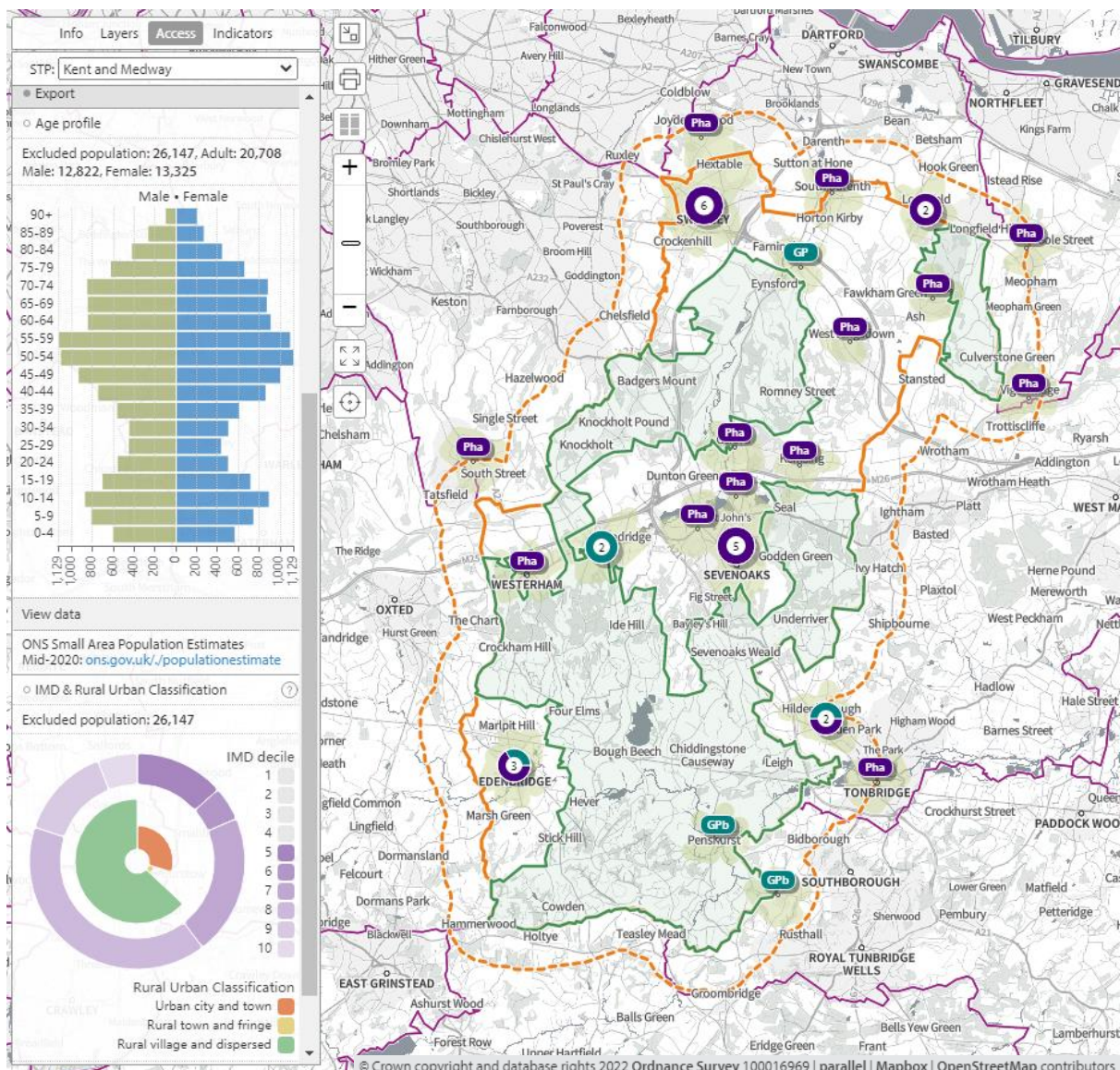
Travel times

In **map 142**, below, the olive-green shaded areas are within a **20-minute walk of a community pharmacy/dispensing GP practice during core hours.**

26,147 (21.5%) people are not within a 20-minute walk

24.6% (6,432) of 65+ population is not within a 20-minute walk of a community pharmacy or dispensing GP practice

Map 142. Locations of community pharmacies/dispensing GPs and lower super output areas not within a 20-minute walk

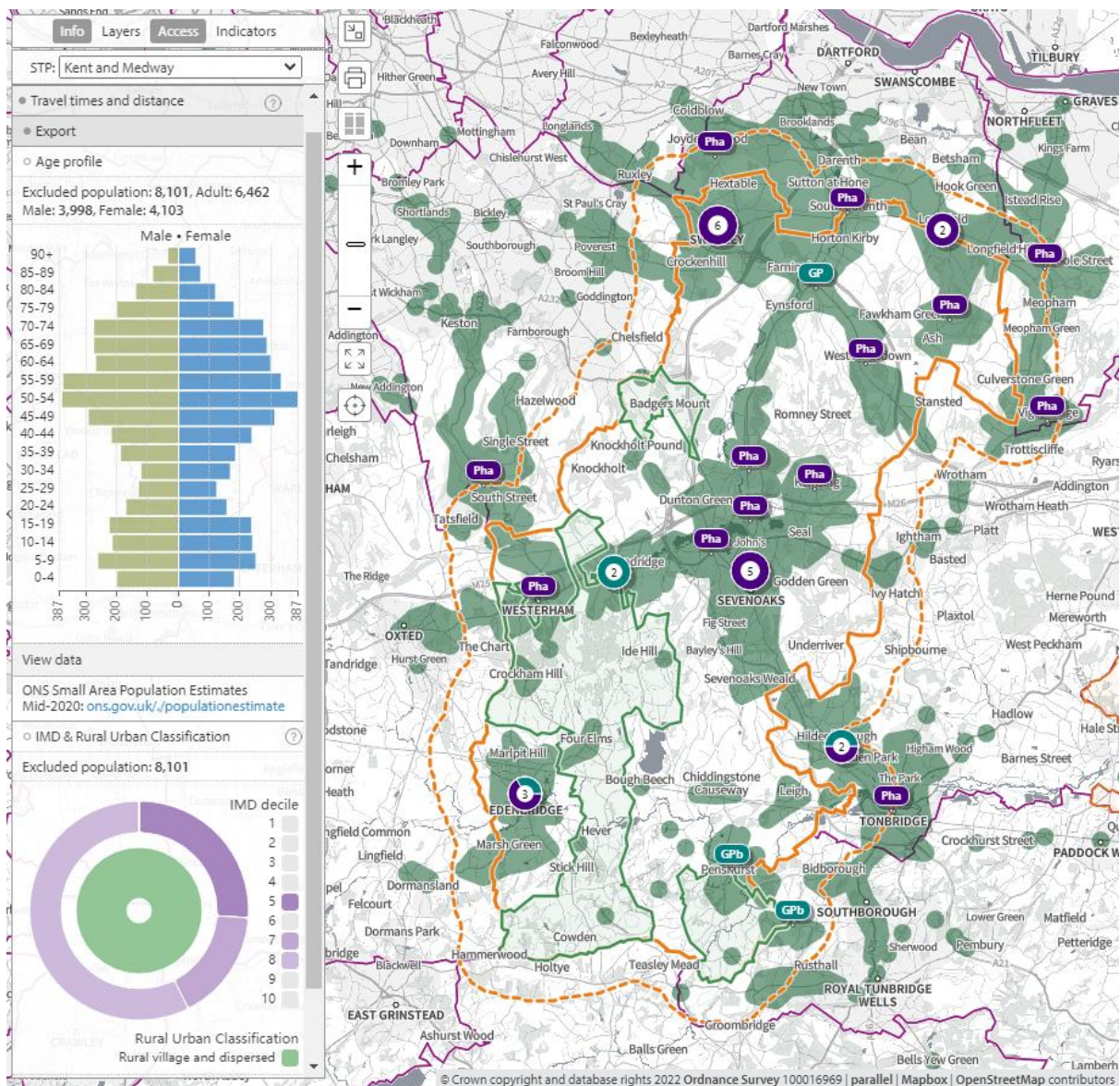


In **map 143**, below, the green shaded areas are within **20-minutes by public transport** of a community pharmacy/dispensing GP practice **on weekdays**.

8,101 (6.7%) people are not within 20-minutes by public transport of a community pharmacy/dispensing GP practice.

7.6% (1,981) of 65+ population is not within 20-minutes by public transport of a community pharmacy or dispensing GP practice

Map 143. Locations of community pharmacies/dispensing GPs and lower super output areas not within 20-minutes by public transport on weekday mornings

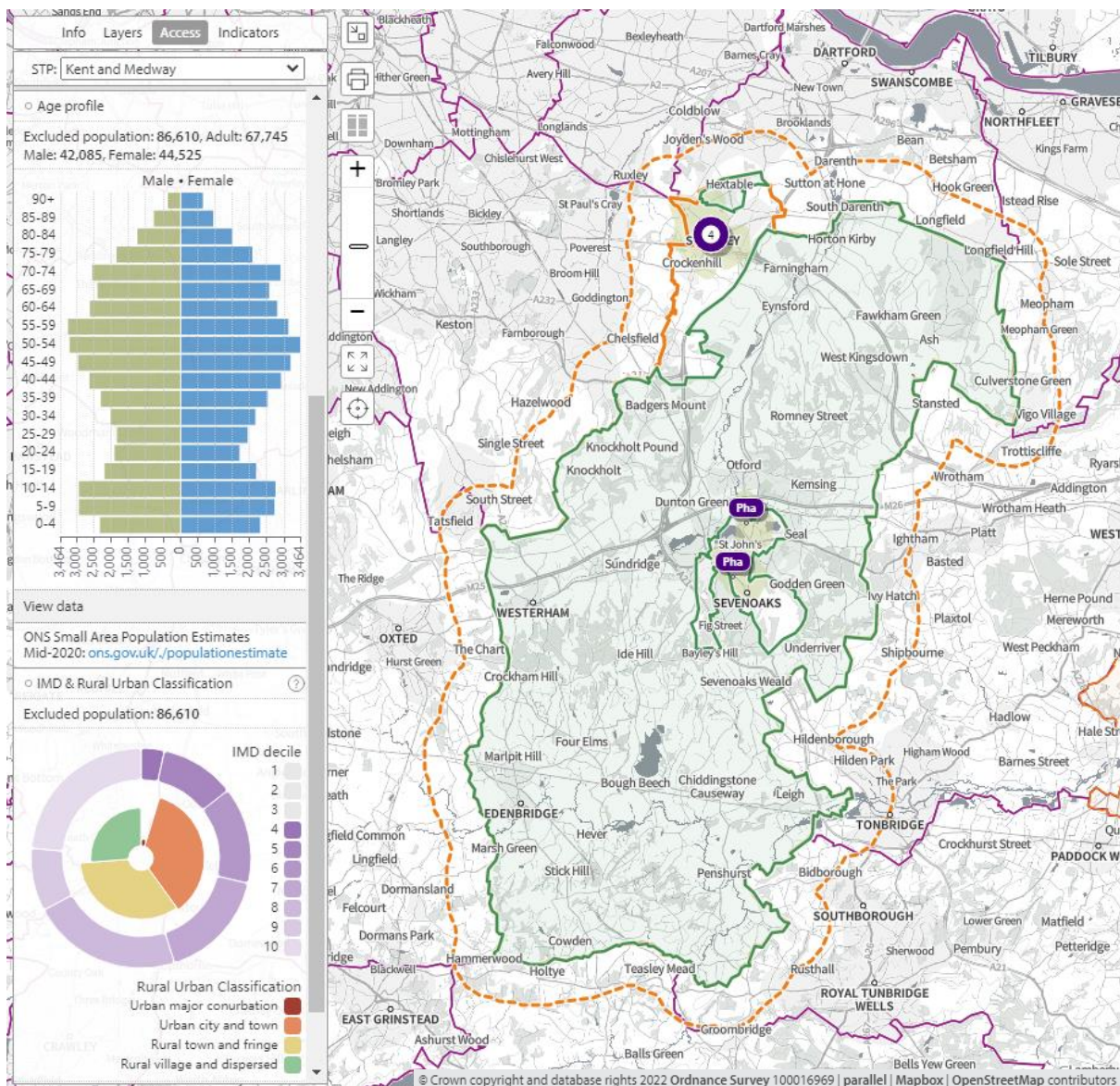


In **map 144**, below, the olive-green shaded areas are within a **20-minute walk** of a community pharmacy that opens until **at least 7pm on weekdays**.

86,610 (71.4%) people are not within a 20-minute walk of a community pharmacy that opens until at least 7pm on weekdays.

75.8% (19,788) of 65+ population is not within a 20-minute walk of a community pharmacy that opens until at least 7pm on weekdays.

Map 144. Locations of community pharmacies open until at least 7pm and lower super output areas not within a 20-minute walk

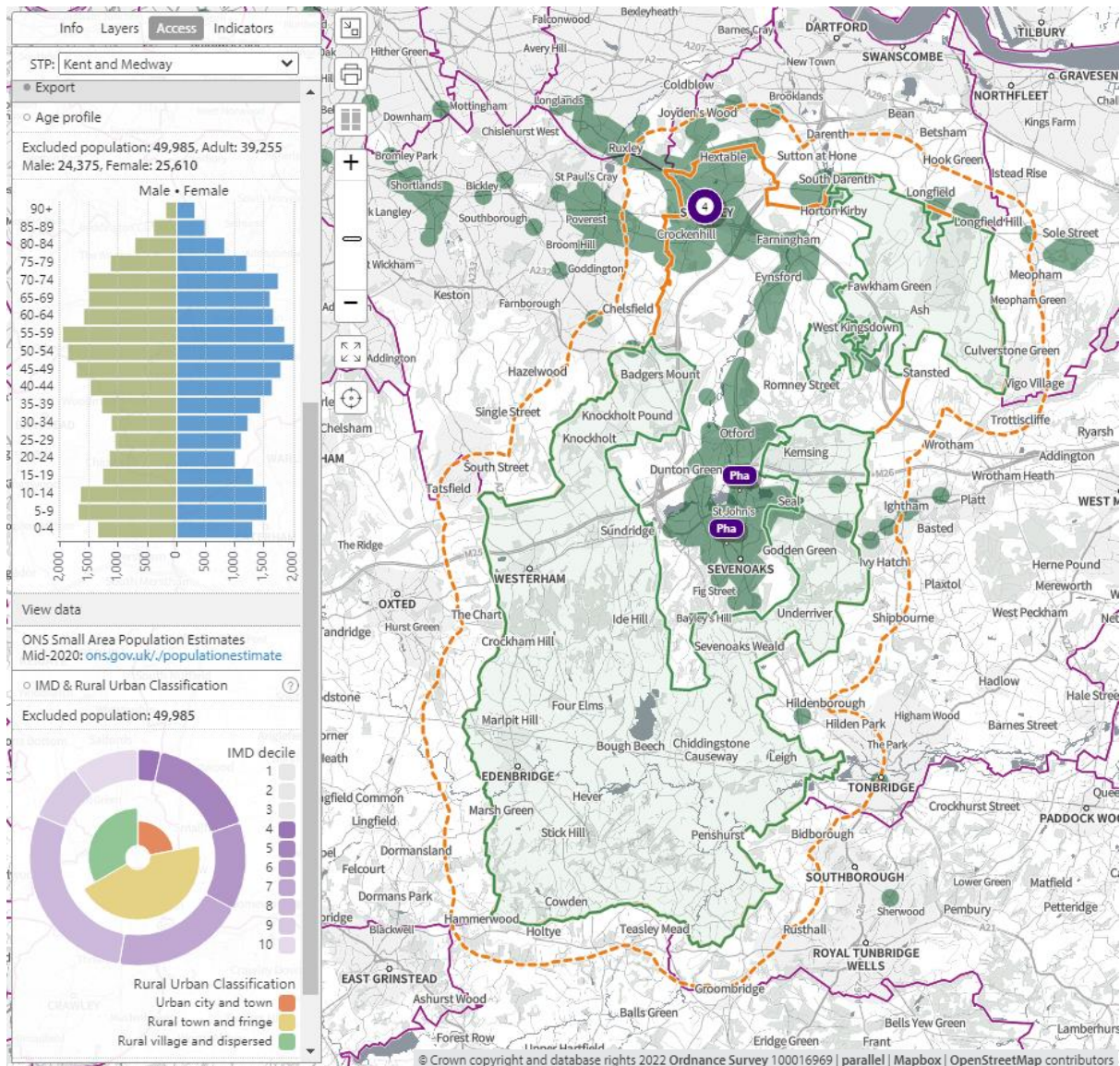


In **map 145**, below, the green shaded areas are within **20-minutes by public transport** of a community pharmacy that **opens past 7pm on weekdays**.

49,985 (41.2%) people are not within 20-minutes by public transport that opens past 7pm on weekdays.

44.2% (11,544) of 65+ population is not within 20 minutes by public transport of a community pharmacy that opens past 7pm on weekdays.

Map 145. Locations of community pharmacies open until at least 7pm and lower super output areas not within 20-minutes by public transport on weekday evenings



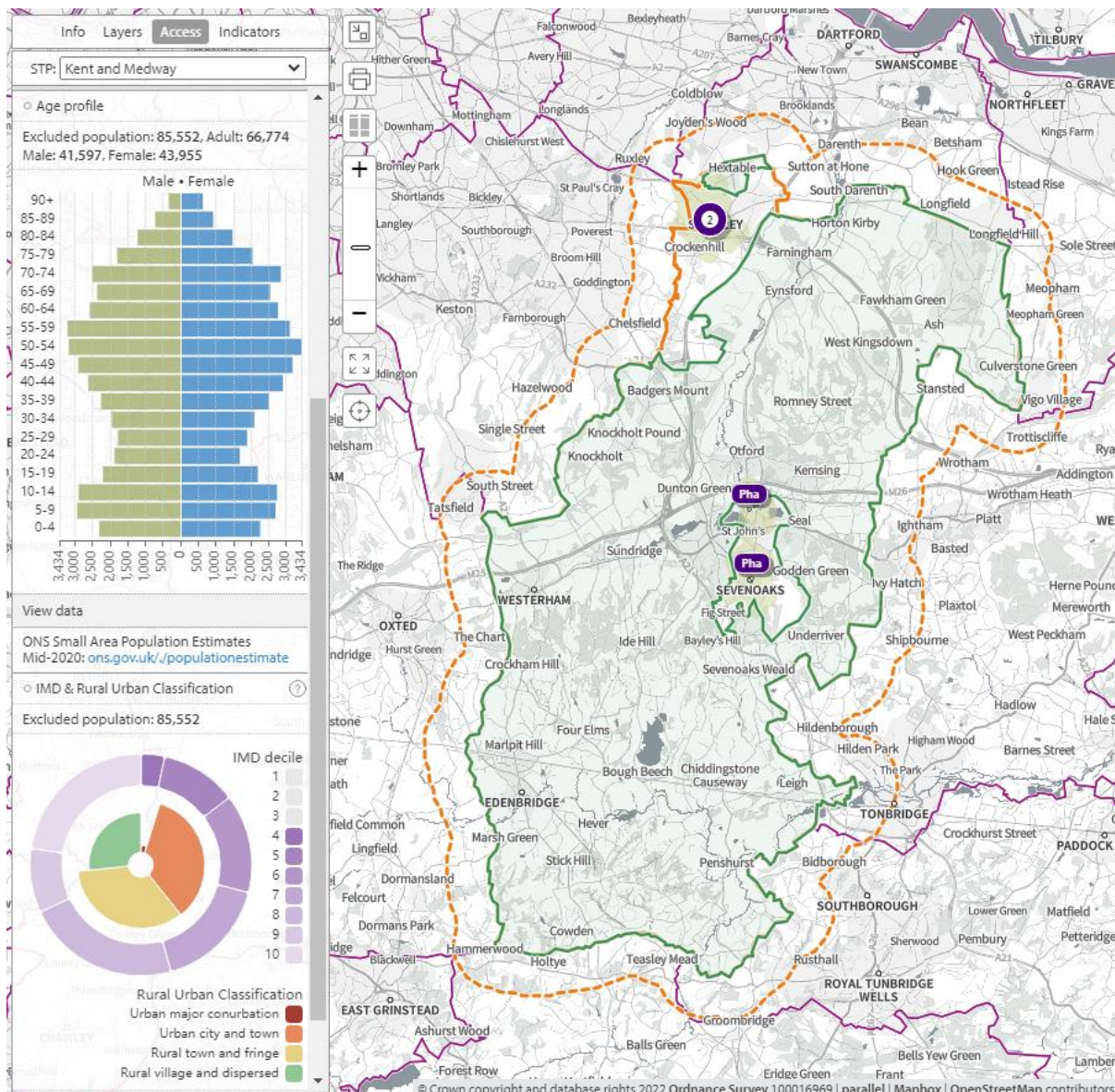
Access on Sundays

In map 146, below, the olive-green shaded areas are within a **20-minute walk** of a community pharmacy that **opens on Sundays**

70.5% (85,552) of the population is not within a 20-minute walk of a community pharmacy that opens on Sundays

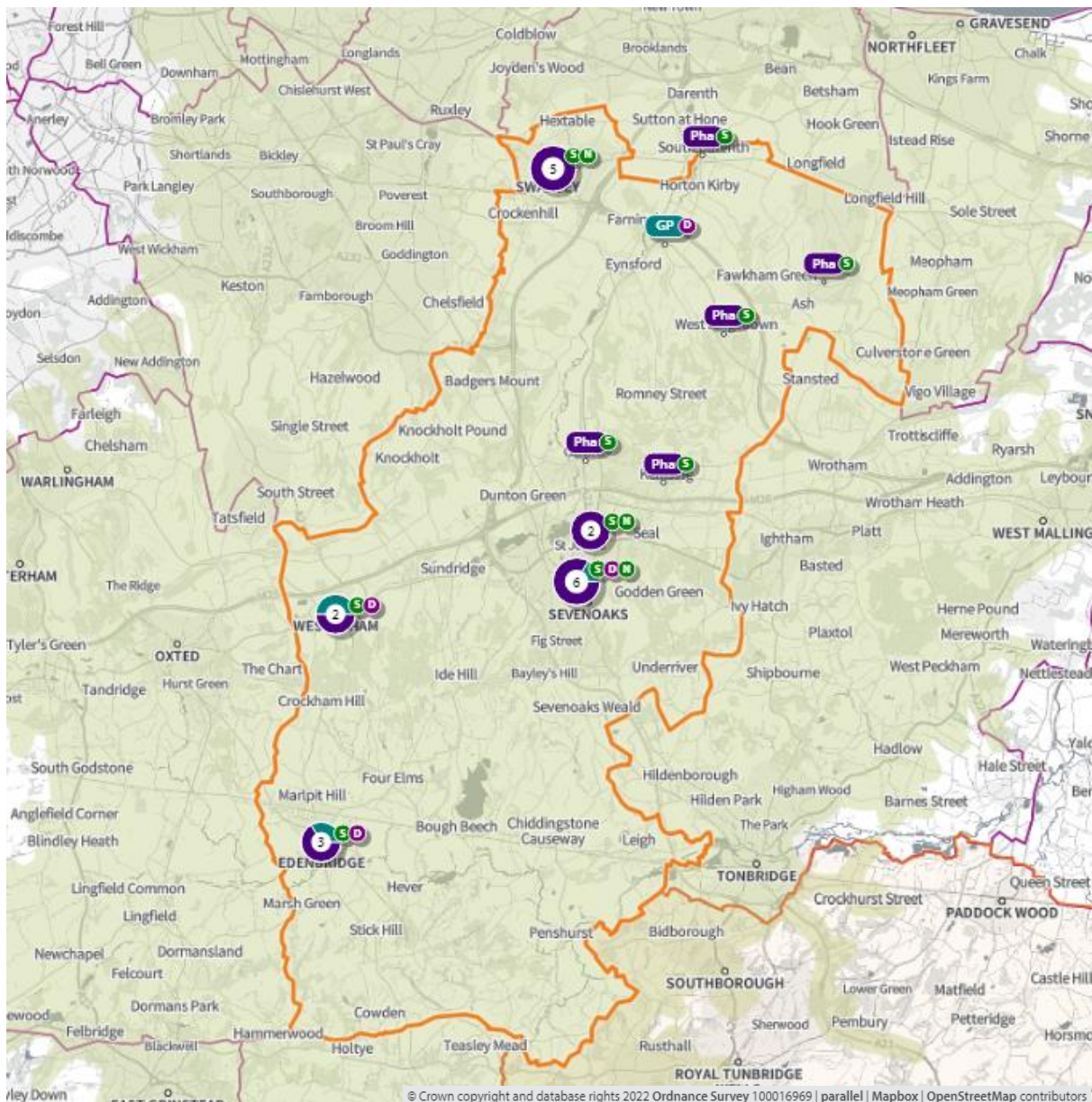
74.4% (19,412) of 65+ population is not within a 20-minute walk of a community pharmacy that opens on Sundays

Map 146. Locations of community pharmacies open on Sundays and lower super output areas not within a 20-minute walk



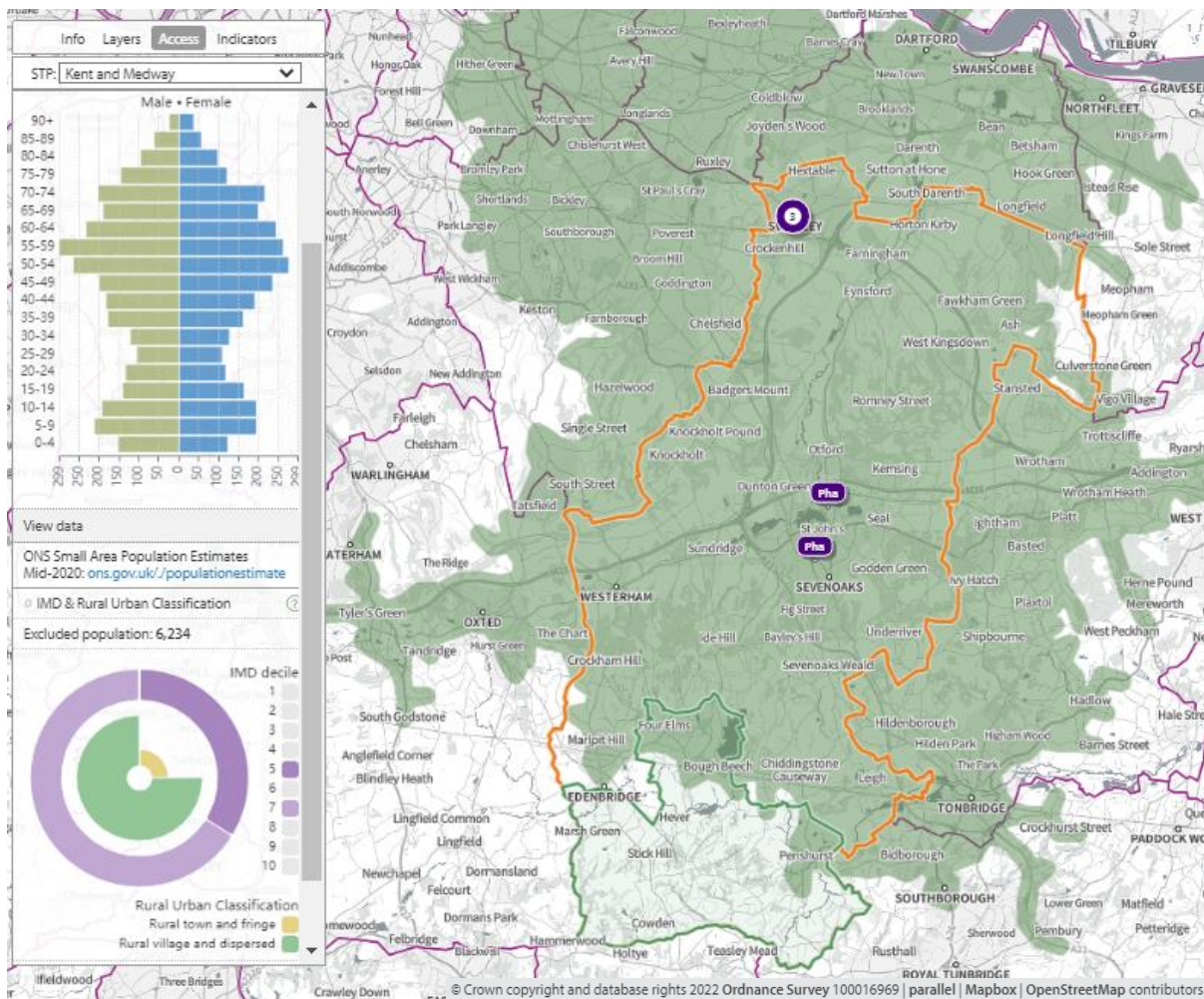
In **map 147**, below, access during **core opening hours, Saturdays and Sundays** is shown. The olive-green shaded areas are within a **20-minute drive** of a community pharmacy/dispensing GP practice. The entire population is within a 20-minute drive.

Map 147. Locations of community pharmacies, dispensing GPs and areas within 20-minutes by car



In **map 148**, below, the green shaded areas are within 20-minutes by car of a community pharmacy that opens until at least 7pm on weekdays. 5.1% of the population (5.5% of 65+) is not within a 20-minute drive.

Map 148. Locations of community pharmacies open until at least 7pm and lower super output areas not within 20-minutes by car



3. Necessary services: current provision outside the localities area ⁽¹⁾

The information below indicates the number of prescriptions dispensed in and outside of the locality.

- 1.6 million items prescribed in Sevenoaks
 - 1.45 million items dispensed in Sevenoaks
 - 1.2 million (68%) via Electronic Prescription Service
 - 152,981 dispensed outside of the district
 - 57,000 distance selling
 - 22,568 Tunbridge Wells
 - 19,976 Dartford

- 1.76 million items dispensed in Sevenoaks
 - 1.57 million items dispensed by community pharmacies in Sevenoaks
 - 190,528 dispensed by 10 GP practices:
 - 67,468 Braeside Surgery
 - 50,708 Edenbridge Medical Practice
 - 33,595 Amherst Medical Practice
 - 74,820* items prescribed outside borough i.e. more coming in than going out

* Branch surgeries mean that this figure is not entirely accurate

Some residents choose to access contractors outside both the locality and the Health and Wellbeing Board's area in order to access services:

- Offered by dispensing appliance contractors
- Offered by distance selling premises
- Which are located near to where they work, shop or visit for leisure or other purposes.

Taking into account this choice of pharmacy outside of the locality, the majority of residents can access a pharmacy and do access pharmacy services within the locality.

4. Other relevant services: current provision

The following advanced services were delivered by pharmacies in the Sevenoaks locality in 2020/21.

Table 55. Number of pharmacies providing advanced services

Advanced service name	No. of pharmacies
New Medicine Service	16
Appliance Use Review	0
Hypertension Service [‡]	19
Stoma Appliance Customisation	2
Community Pharmacist Consultation Service (CPCS) [‡]	19
Hepatitis C Antibody Testing Service	0
Seasonal Influenza Vaccination Advances Service	19
Covid Vaccination Service*	1
Covid Home Delivery Service*	17
Covid lateral flow device distribution*	21

*Specific to the Covid-19 pandemic

[‡]Services introduced during the year of study

Please note that three services (Covid Vaccination, Home Delivery and lateral flow devices) were specific to the Covid-19 pandemic and that others were new services (CPCS and hypertension service) introduced within the year. There is, however, good participation and early adoption of new services from pharmacies in this locality.

5. Other NHS services

The Strategic Health Asset Planning and Evaluation (SHAPE) web application provides the following information:

- Amherst Medical Practice is open until 8pm on Mondays and Fridays and until 7.30pm on Wednesdays, and open from 7.15am on Tuesdays and 7am on Thursdays
- Braeside Surgery is open until 8pm on Mondays and Wednesdays
- Edenbridge Medical Practice is open until 8pm on Mondays, Tuesdays and Thursdays
- St Johns Medical Practice is open until 8.30pm on Tuesdays and until 8pm on Wednesdays
- West Kingsdown Medical Centre is open from 7.30am on Tuesdays
- Temple Hill Surgery is open from 7.30am on Tuesdays
- The Cedars Surgery is open until 8pm on Mondays and Thursdays and from 7am on Wednesdays

There is a minor injuries unit situated at Sevenoaks Hospital which is open daily 8am-8pm.
There is a second minor injuries unit situated at the War Memorial Hospital, Edenbridge which is open daily 8.30am-6.30pm.

There are also drug and alcohol services, Kent and Medway NHS Hospital Trusts and Kent and Medway NHS and Social Care Partnership Trust and Kent Community Health NHS Foundation Trust with services that generate prescriptions that are dispensed by community pharmacies in this locality.

The number of prescriptions from these services is shown below:

- 17 pharmacies dispensed a total of 1,250 (mean = 74, range = 1-252) items from drug and alcohol services
- All 21 pharmacies dispensed a total of 810 (mean = 39, range = 9-84) items from Kent and Medway NHS and Social Care Partnership Trust (secondary mental health services)
- 20 pharmacies dispensed a total of 94 items (mean = 5, range = 1-18) from KCHFT
- 21 pharmacies and 3 GP practices dispensed a total of 2,730 items (mean = 114, range = 1-289) from Kent and Medway hospitals

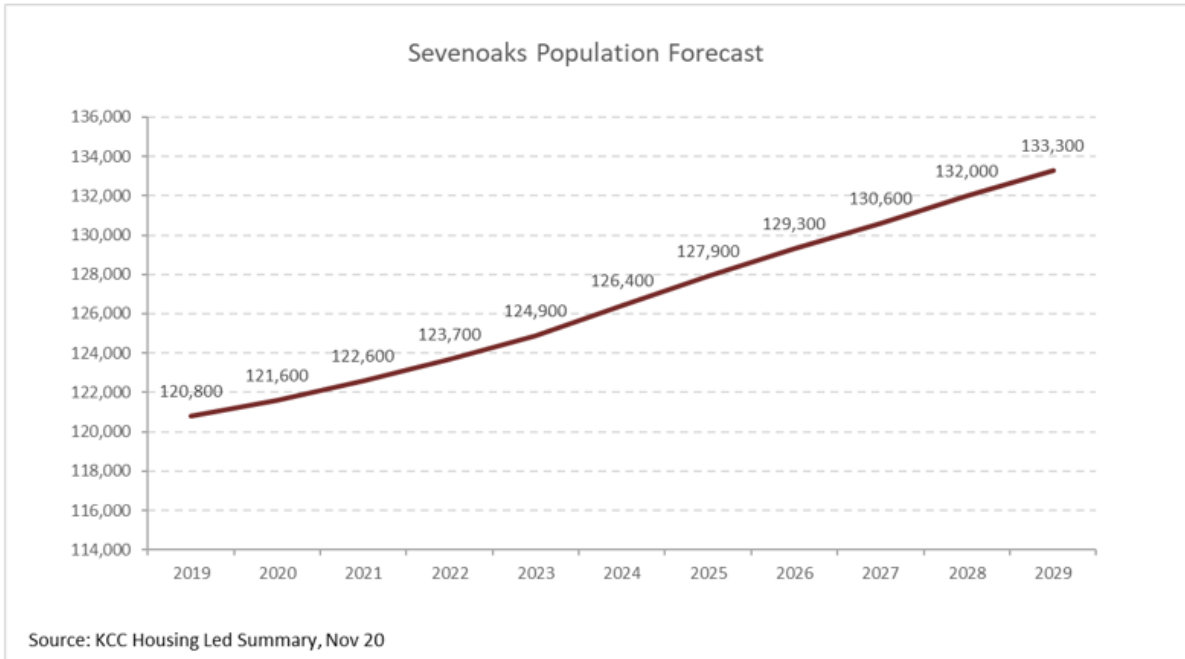
6. Choice with regard to obtaining pharmaceutical; services

As can be seen from section 2 and 3, those living within the locality and registered with one of the GP practices generally choose to access one of the pharmacies in the locality in order to have their prescriptions dispensed or, if eligible, to be dispensed to by their practice. Those that look outside the locality usually do so either to access a neighbouring pharmacy, or a dispensing appliance contractor or distance selling premises outside of the Health and Wellbeing Board's area.

7. Developments

Figure 41 below shows the predicted increase in the population of the Sevenoaks locality continuing to grow over the lifetime of this PNA.

Figure 41 Sevenoaks population forecast



 **1 pharmacy per 6,091 people in 2025**

The population of Sevenoaks district is projected to increase by 5% to 127,900 in 2025. This is an increase of 300 people per pharmacy from 2020. As stated in the community pharmacy contracts survey 10 responding pharmacies in the Sevenoaks locality do have capacity to increase dispensing services and 9 have capacity to increase other services.

Map 149 below shows where there are major housing developments planned in the coming years and the table indicates the number of dwellings planned for each site. The blue shaded areas are locations of major housing developments. The table below shows number of proposed dwellings at each site by year. With an average of 2.4 people per proposed dwelling, by 2025 these sites will provide accommodation for approximately 6,700 people.

Map 149. Location of housing developments



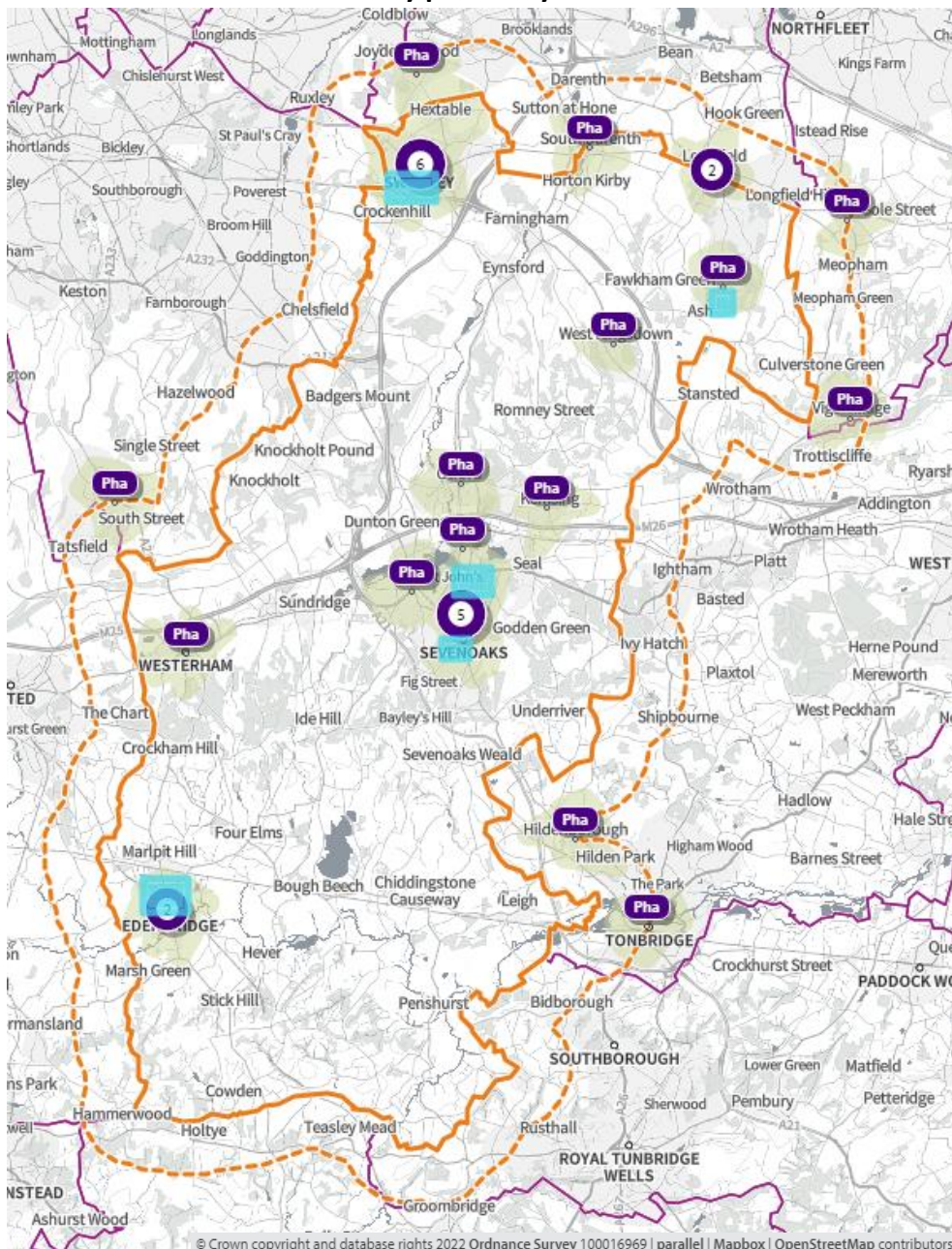
Table 56. Proposed housing developments – number of dwellings per year at each development

Site Name	2025
1. Land West of Enterprise Way, Edenbridge	276
1.Station Approach, Edenbridge	20
2.United House, Goldsel Road, Swanley	185
2.Land West of Cherry Avenue	50
2.Bevan Place	46
2.Bus Garage/Kingdom Hall, London Road	30
3.Cramptons Road Water Works, Cramptons Road	50
3.Sevenoaks Gasholder Station, Cramptons Road	35
4. Post Office/BT Exchange, South Park, Sevenoaks	42
5.New Ash Green Village Centre, New Ash Green	50

In the following maps access, with 20 minutes by walking, public transport and driving from these new developments to community pharmacies is shown in the following maps. The maps shown access on different days and times of the week.

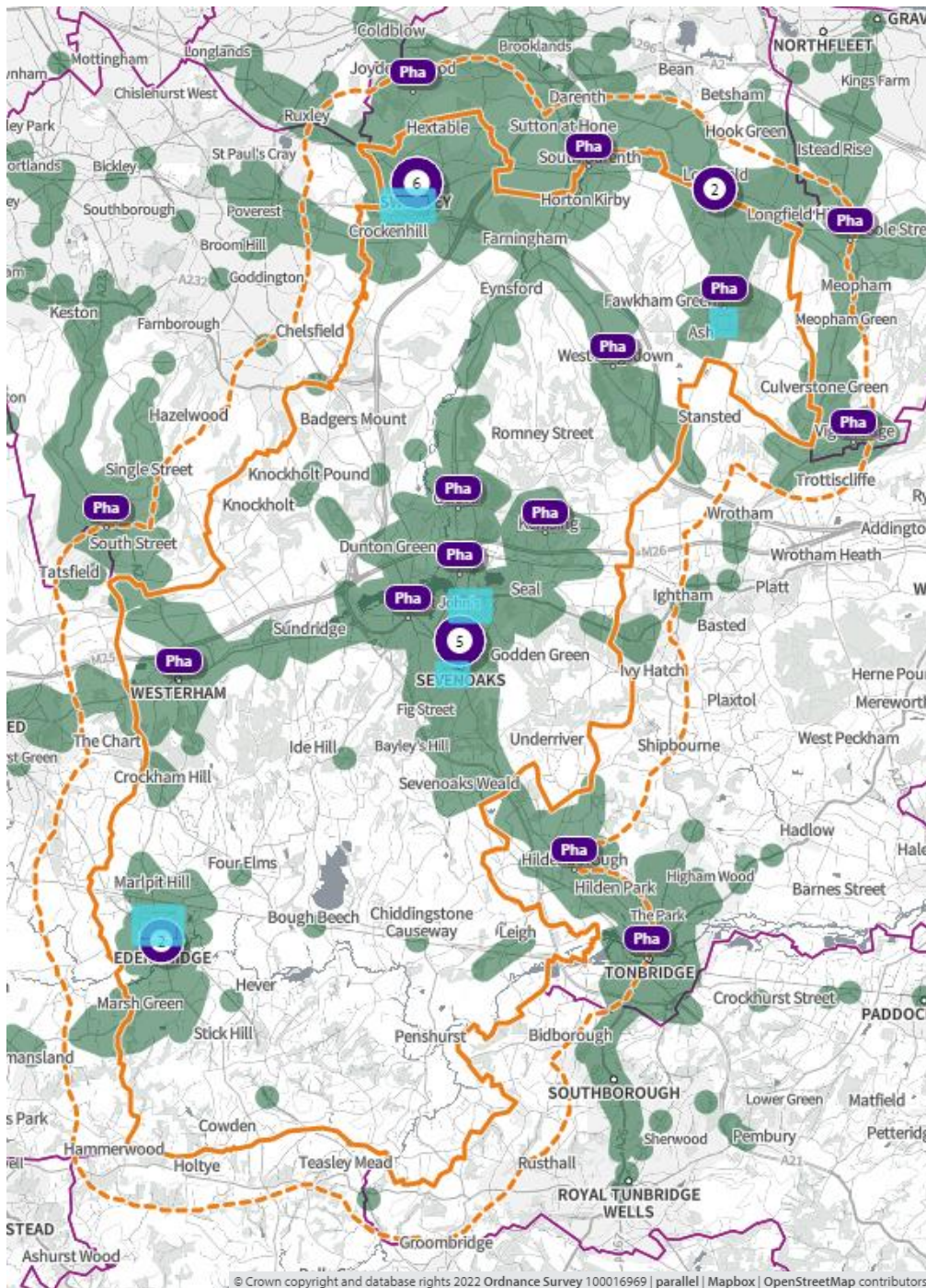
In **map 150**, below, Green shaded areas are within a **20-minute walk** of a community pharmacy/dispersing GP practice during core hours and the blue shaded areas are locations of major housing developments.

Map 150. Location of community pharmacies, proposed housing developments, and areas within a 20-minute walk of a community pharmacy



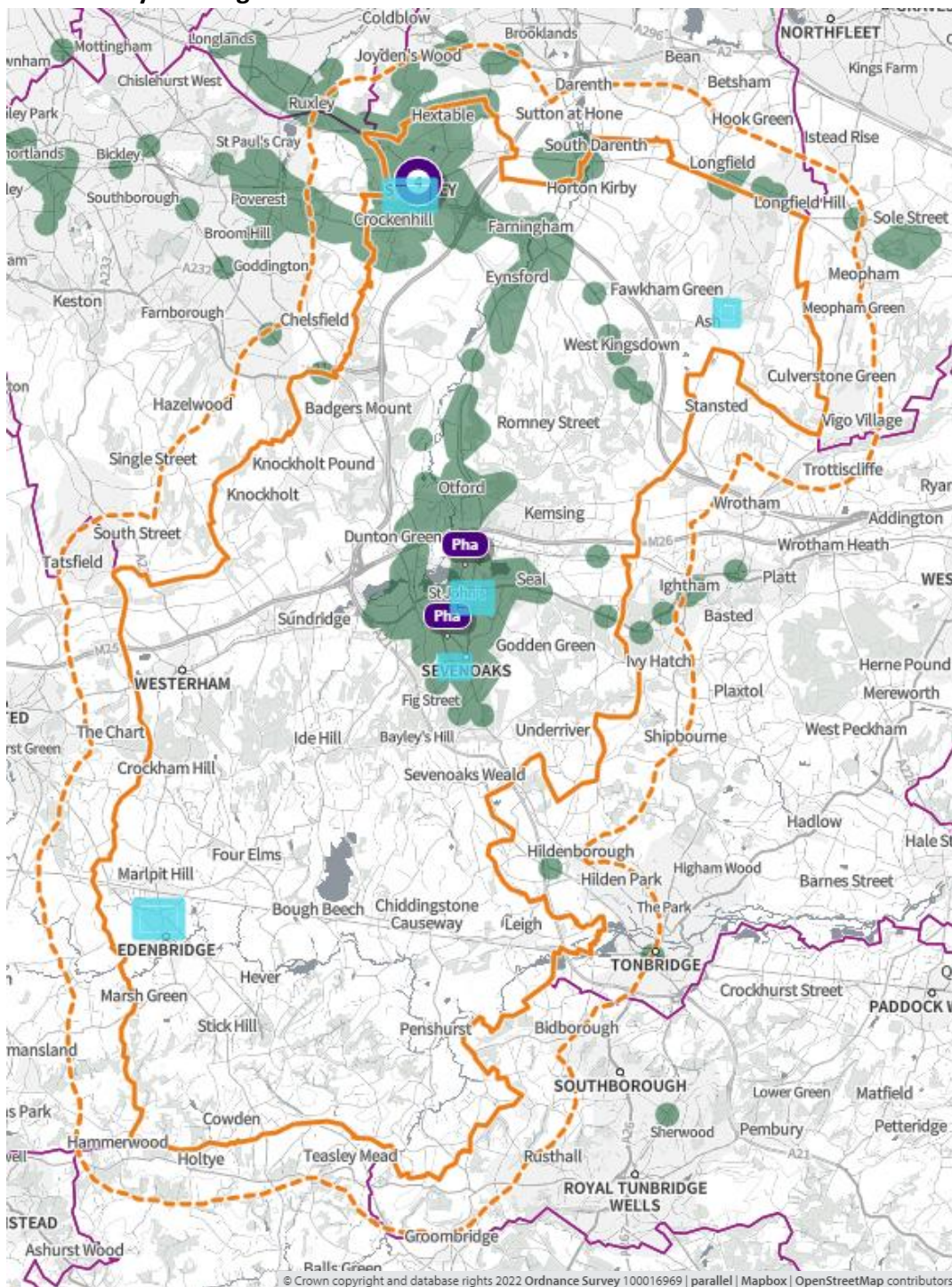
In **map 151**, below, the green shaded areas are within **20-minutes by public transport** of a community pharmacy/dispensing GP practice during core opening hours and the blue shaded areas are locations of major housing developments.

Map 151. Location of community pharmacies, proposed housing developments, and areas within 20 minutes of a community pharmacy by public transport on weekday mornings



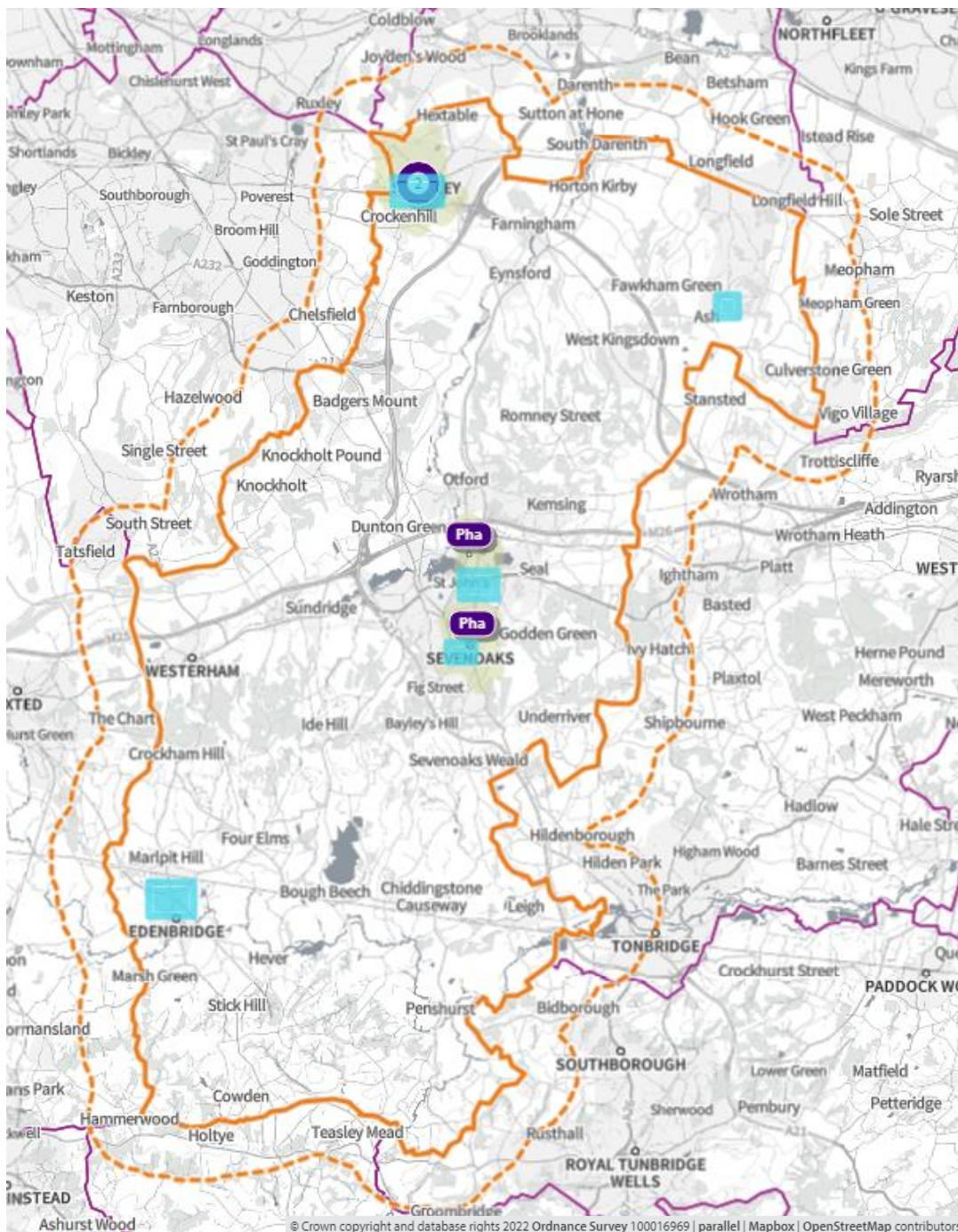
In **map 153**, below, the green shaded areas are within **20-minutes by public transport** of a community pharmacy that is open until **at least 7pm Monday to Friday** and the blue shaded areas are locations of major housing developments

Map 153. Locations of community pharmacies open until at least 7pm on weekdays, proposed housing developments, and areas within 20 minutes of a community pharmacy by public transport on weekday evenings



In **map 154**, below, the green shaded areas are within **20-minutes' walk** of a community pharmacy that is open on **Sundays** and the blue shaded areas are locations of major housing developments

Map 154. Location of community pharmacies, proposed housing developments, and areas within a 20-minute walk of a community pharmacy that is open on Sundays



8. Necessary services: - Gaps in provision

The population of the Sevenoaks locality is well served by pharmacies with good access at all times. The access is assisted by the presences of three 100-hour pharmacies. No gaps in provision have been identified.

9. Improvements or better access: Gaps in provision

No gaps in provision have been identified.