

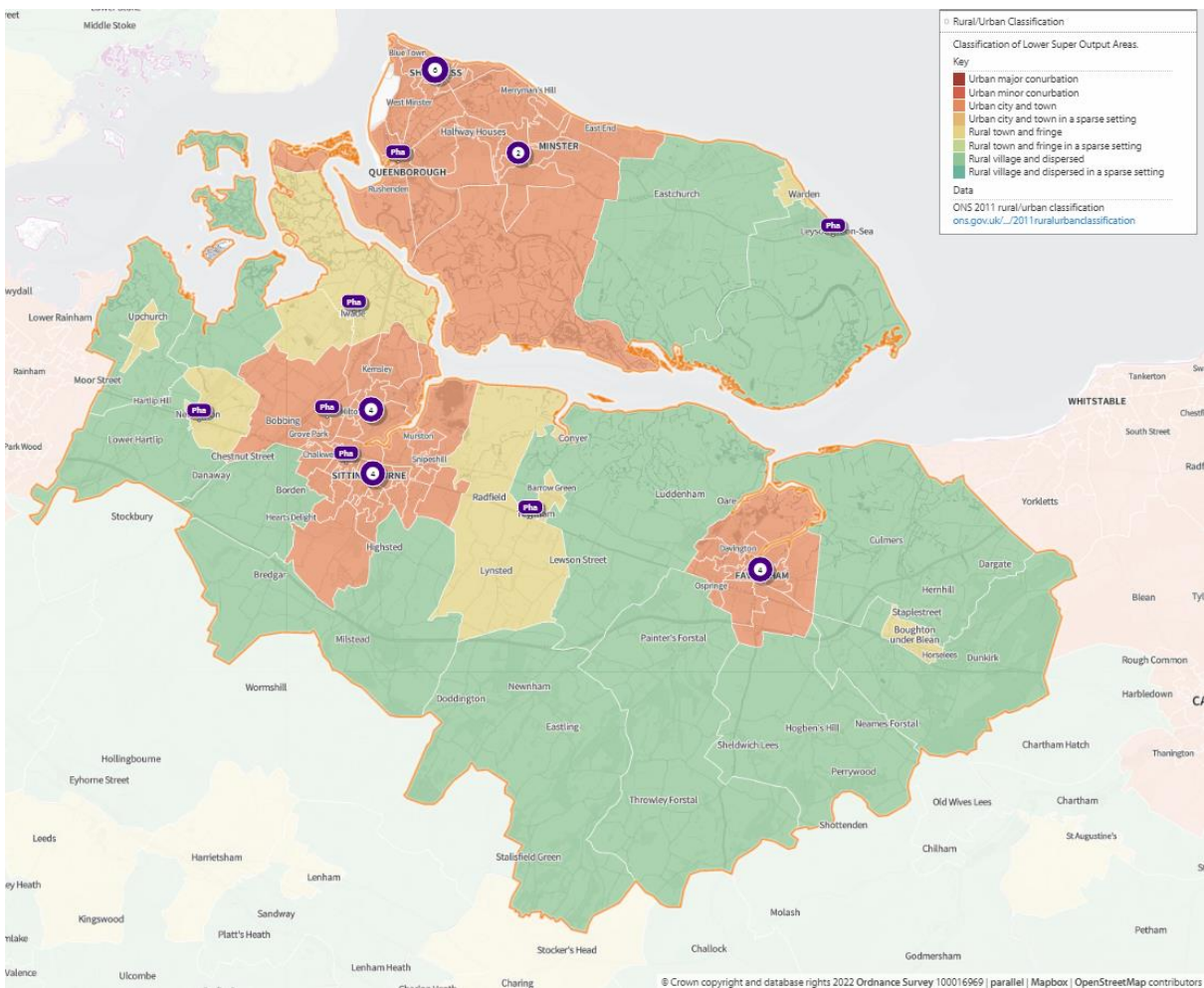
16 Swale Council Locality

1. Key Facts

Swale is a local government district in the north of the county. It covers an area of 400 square km. The population is concentrated in and around the three main towns of Sittingbourne, Sheerness and Faversham. Beyond these towns the district is rural and sparsely populated. The district contains the Isle of Sheppey, which is separated from the mainland by The Swale waterway, and a significant prison population at HMPs Elmley, Stanford Hill and Swaleside.

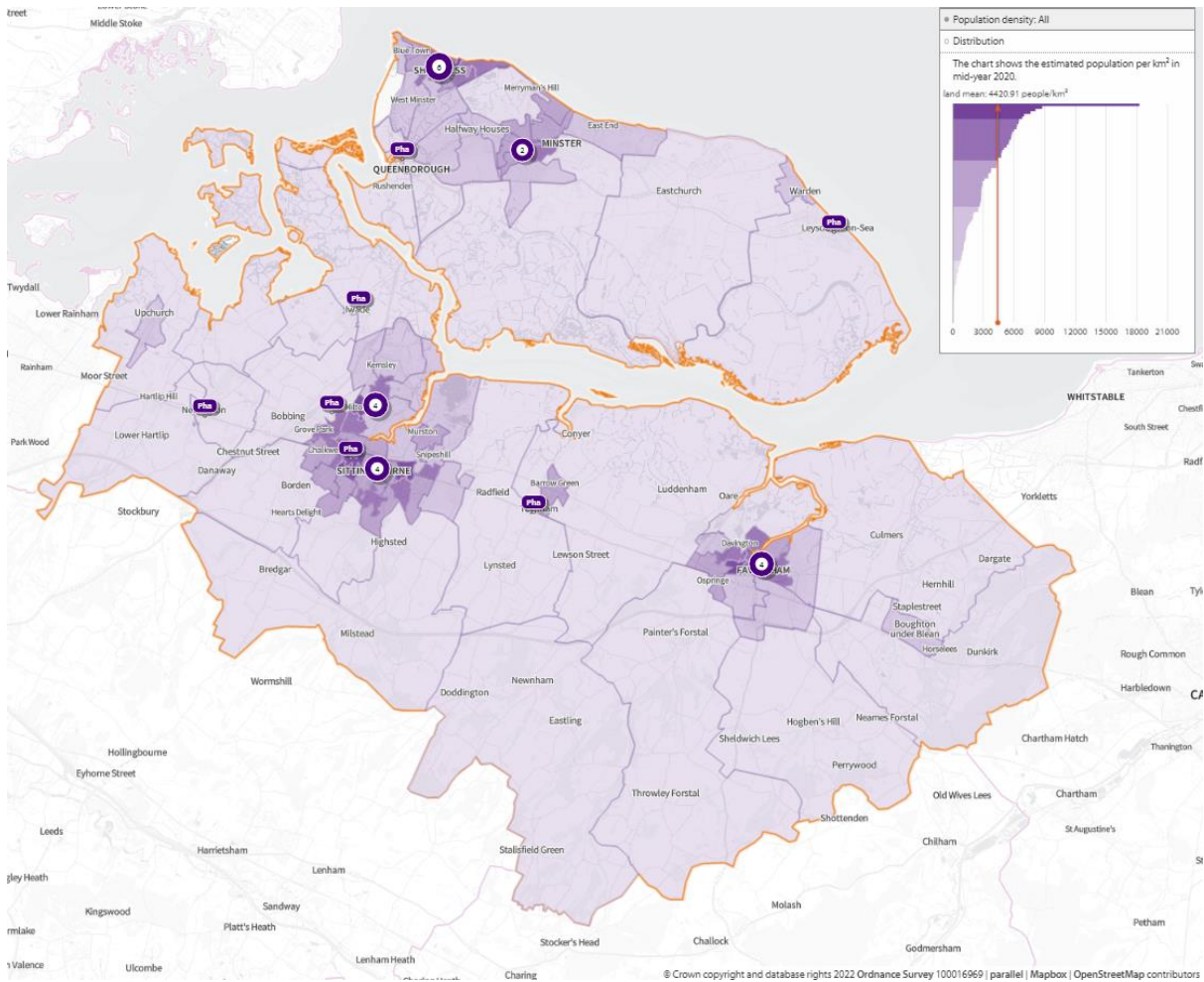
Urban/Rural Classification

Map 155. Rural/urban classification of lower super output areas



Population

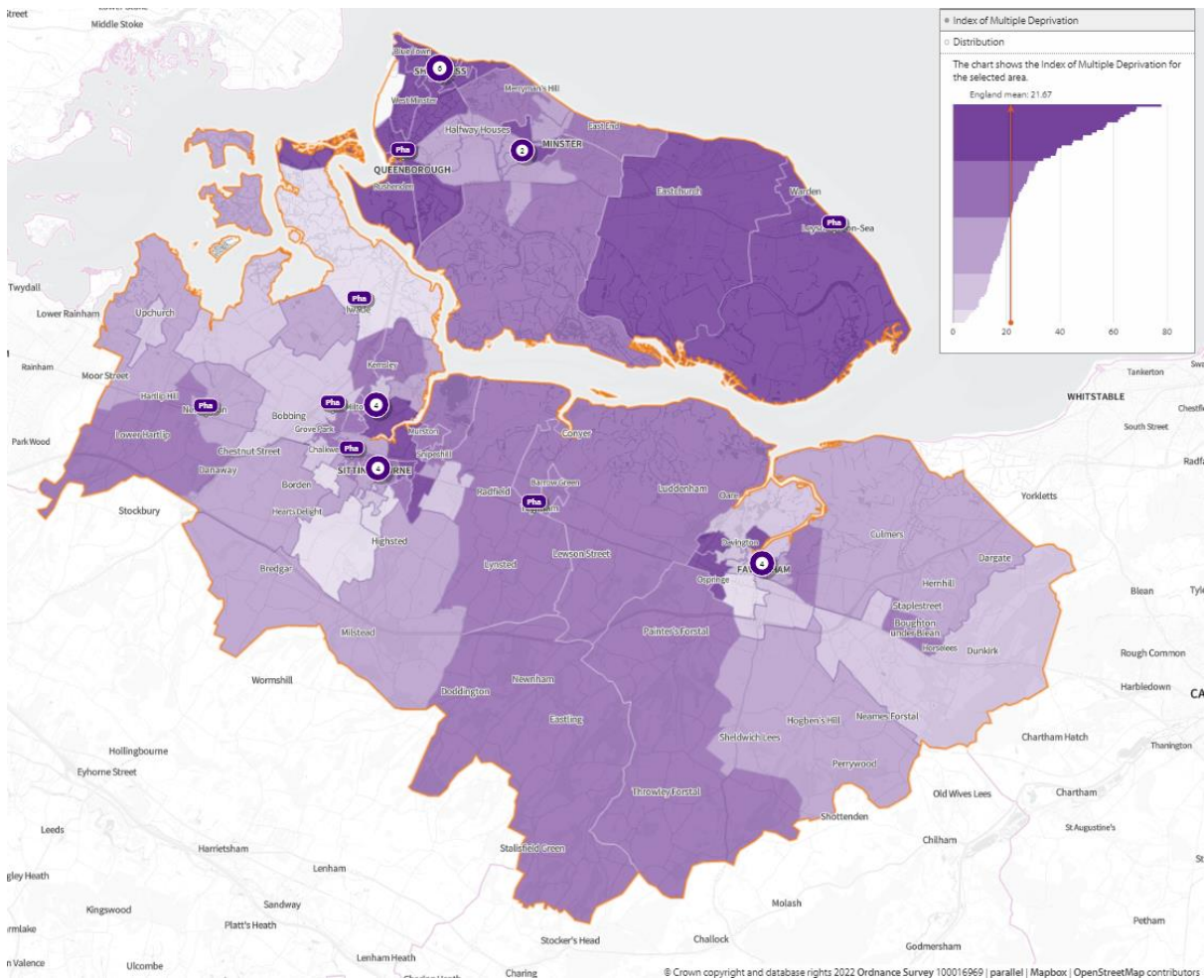
Map 156. Population density of lower super output areas overlaid with locations of pharmacies



Deprivation

Map 157 below shows the areas of deprivation in the Swale District locality. Swale is the second most deprived district in Kent with a significant number of the population in England's most deprived 10%. Employment rates are similar to the Kent average ⁽⁶³⁾ and educational attainment is significantly lower ⁽⁶⁴⁾.

Map 157. Deprivation of lower super output areas overlaid with locations of pharmacies



Language

English is the main language for all people aged 16 or over in 97% of households in the district. 1.4% of households have no people with English as the main language ⁽²⁾.

Home Ownership

68% of houses are owned either outright (31%) or with a mortgage (37%). The average number of occupants per household is 2.4, the same as the Kent average ⁽²⁾.

Age Distribution

The average age of Swale district residents is 40.6, slightly lower than the Kent average of 41.4. 19.3% of the population is over 65 and 20.5% 0-15 ⁽²⁾. Life expectancy at birth is 78 for males and 82 for females ⁽⁴⁶⁾.

Economy

By industry, the top three employers in the Swale district are wholesale and retail trade (14.9%), manufacturing (11.9%), transport and storage, and education (9.4%) ⁽¹⁵⁾. In comparison to Kent as a whole, the district has a much higher proportion of transportation/storage, manufacturing, and agriculture, forestry and fishing jobs, reflecting the districts topography ⁽¹⁵⁾.

Car Ownership

20% of households in Swale district do not have a car or van in the household, this is similar to the Kent average ⁽¹³⁾.

Care Homes

There are a considerable number of care homes in the Swale area. Patients who are looked after in a care home setting are often high users of medicines. However, because of the nature of their care, they rarely access pharmaceutical services individually, leaving this to be carried out by the care home staff. More recently care home organisations do not use local pharmacies for this service, favouring the large “hub” or “internet” pharmacies which specialise in this type of one-stop service. Therefore, there is not considered to be any relationship between the number of care homes and the need for local pharmaceutical services.

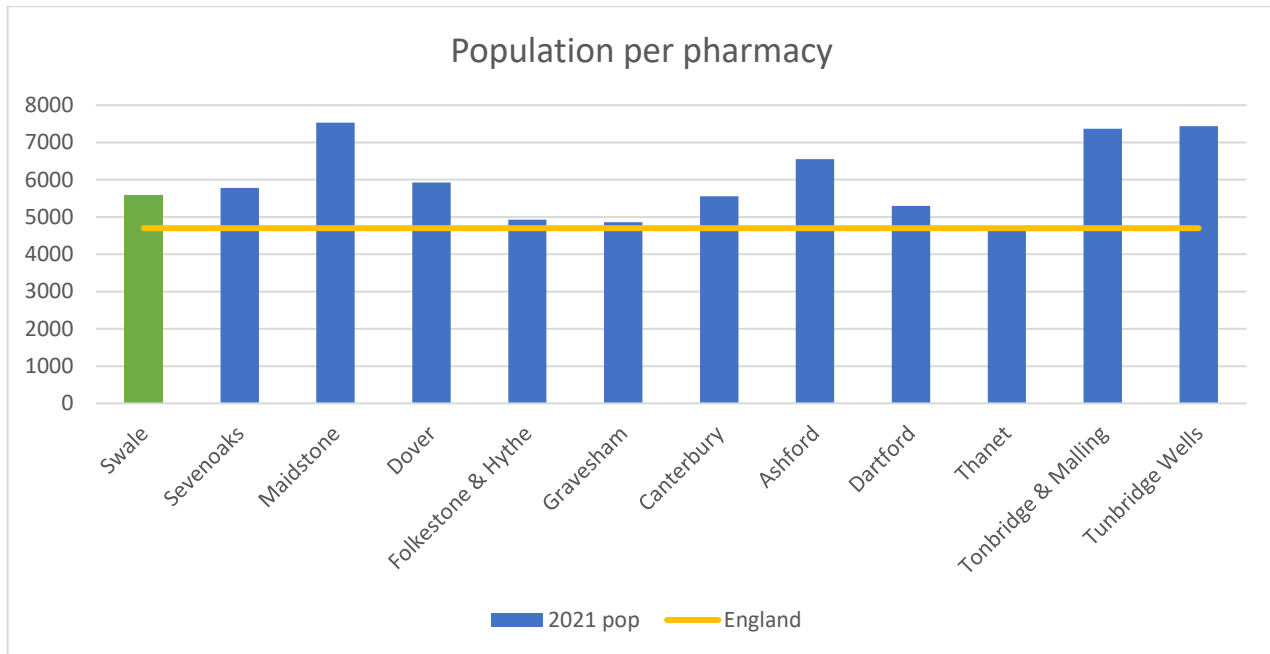
2. Necessary services: current provision within the locality

(All data presented in this section is for the financial year 2020/21 with the exception of lateral flow devices data which covers the 4 months from April 2021 to July 2021)

There are 27 Community pharmacies providing dispensing services in the Swale locality and no dispensing GP surgeries. There are two distance selling pharmacies in the locality.

Each pharmacy provides on average services for 5,593 of the area’s population. Figure 42 below shows how this compares with the other localities of Kent.

Figure 42 Number of people per pharmacy in each locality



The facts below indicate that the majority of prescriptions generated in the locality are dispensed in the locality. There is a small percentage of prescriptions generated in the area that are dispensed in neighbouring areas and a slightly higher percentage that are generated outside the locality and dispensed by Swale community pharmacies⁽¹⁾.

- 3,266 outside prescribers dispense in Swale
 - 8.3% of all items dispensed in Swale
- 26 prescribers in Swale
 - 91.7% of all items dispensed in Swale
- 46 dispensers in Swale
 - 92.1% of all items prescribed in Swale
- 1,551 dispensers outside of Swale
 - 7.9% of all items prescribed in Swale

Pharmacy locality: Maps 1 and 2 above show the locality of the community pharmacies.

Opening times: All are open Monday to Friday, with 24 opening on Saturdays and 5 opening on Saturdays and Sundays. This gives a weekly opening hours range of 40 to 102 hours and an average of 58 hours of opening each week. 22 of these pharmacies open for at least one hour after 5pm on weekdays.

Table 57 below show the core and supplementary hours of each pharmacy ⁽⁶⁵⁾.

Table 57. Opening times for all pharmacies

Pharmacy	Total core weekly hours	Total supplementary weekly hours	Total weekly hours	Max. hours open after 5pm at least 1 day/week	Saturday hours	Sunday Hours
Tesco Pharmacy	100	2	102	5.5	16	6
Asda Pharmacy	100	1	101	6.5	15	6
Newton Place Pharmacy	100	0	100	5.5	15.5	7
Tesco Pharmacy	40	38	78	3	12	6
Sheppey Hospital Pharmacy	40	20	60	1	10	0
Boots the Chemists	40	17	57	0.5	8.5	6
Minster Pharmacy	40	15.5	55.5	1.5	8.5	0
Paydens	40	14	54	1.5	4	0
Mistry Chemists	40	13.5	53.5	1.5	6	0
Superdrug Pharmacy	40	13	53	0.5	8	0
Paydens Pharmacy	40	13	53	2	3	0
Superdrug Pharmacy	40	13	53	0.5	8	0
Leysdown Pharmacy	40	13	53	1	8	0
Kamsons Pharmacy	40	11.5	51.5	1.5	4	0

Table 57 continued

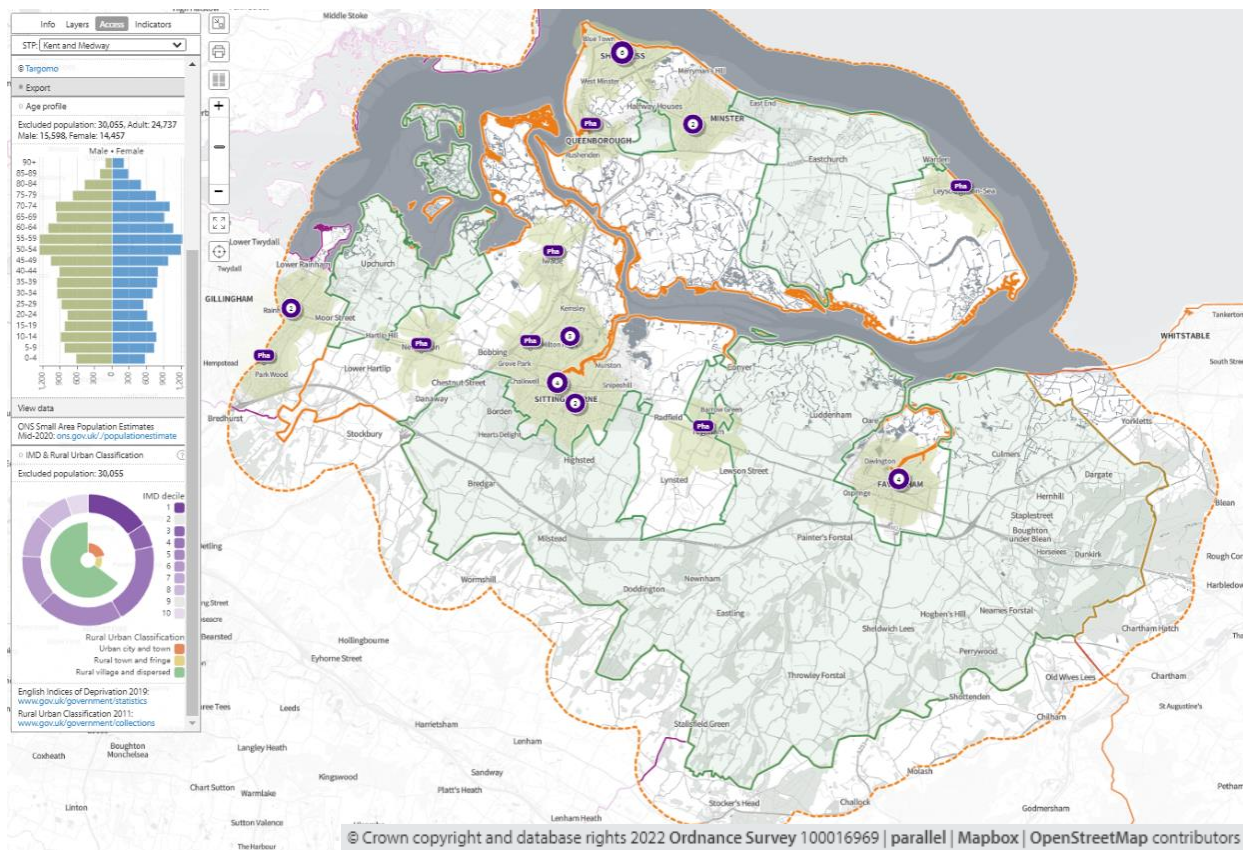
Pharmacy	Total core weekly hours	Total supplementary weekly hours	Total weekly hours	Max. hours open after 5pm at least 1 day/week	Saturday hours	Sunday Hours
Kamsons Pharmacy	-	-	51.5	1	4	0
Boots the Chemists	40	11	51	0.5	8.5	0
Newington Pharmacy	40	9	49	1	4	0
LloydsPharmacy	40	8.5	48.5	1	3.5	0
Well	40	8.25	48.25	1	3.25	0
Memorial Pharmacy	40	8	48	1	3	0
Delmergate Ltd	40	7.5	47.5	1.5	0	0
Kemsley Pharmacy	40	7.5	47.5	1.5	0	0
Austinoma Chemist	40	7	47	2	3	0
Iwade Pharmacy	39	7.5	46.5	1.5	4	0
Well	40	5	45	1	0	0
Boots the Chemists	42	3	45	0.5	7.5	0
Greenstreet Pharmacy	40	0	40	1	4	0

Access to Community Pharmacies

Travel times

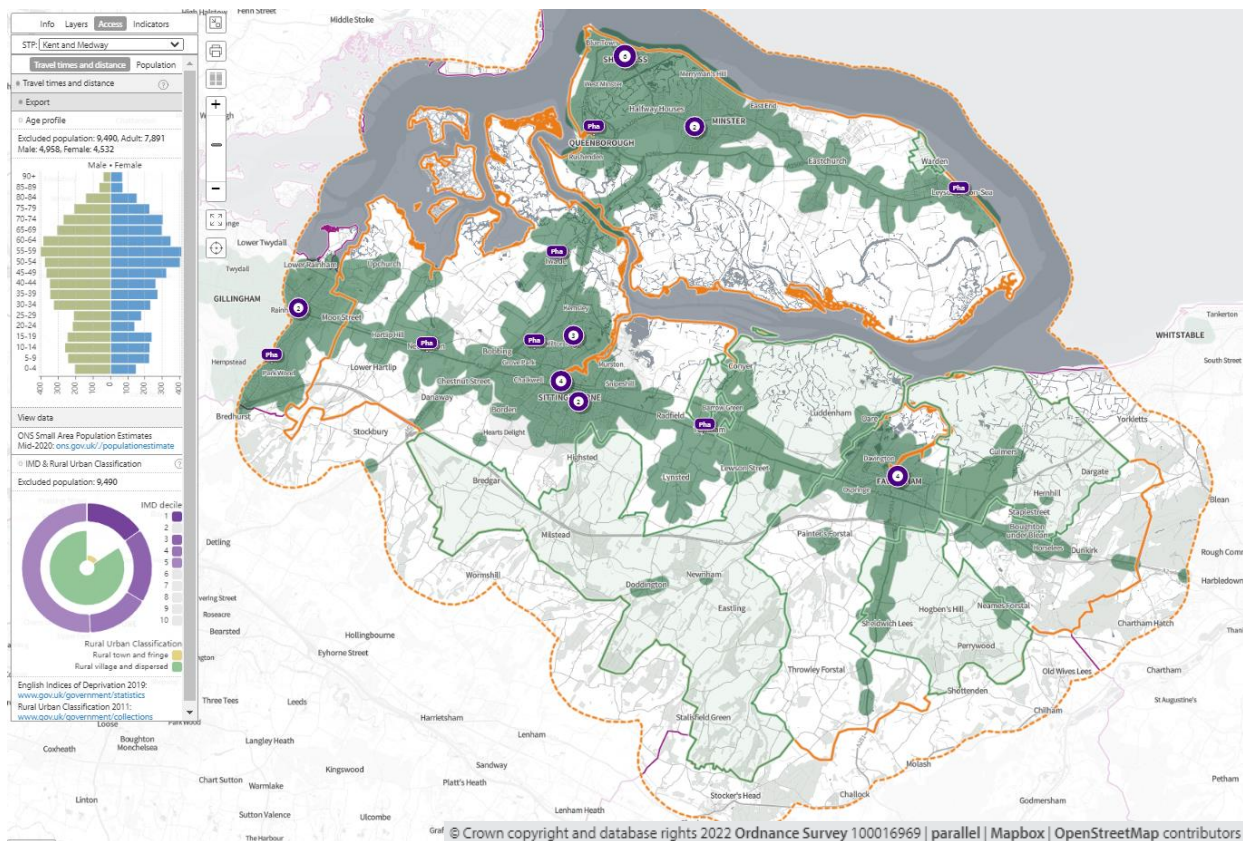
In **map 158**, below, access during **core opening hours** is shown in olive green shaded areas are **within a 20-minute walk** of a community pharmacy. 30,055 (19.9%) people are not within a 20-minute walk. 24.5% (7,071) of 65+ population is not within a 20-minute walk of a community pharmacy.

Map 158. Locations of community pharmacies and lower super output areas not within a 20-minute walk



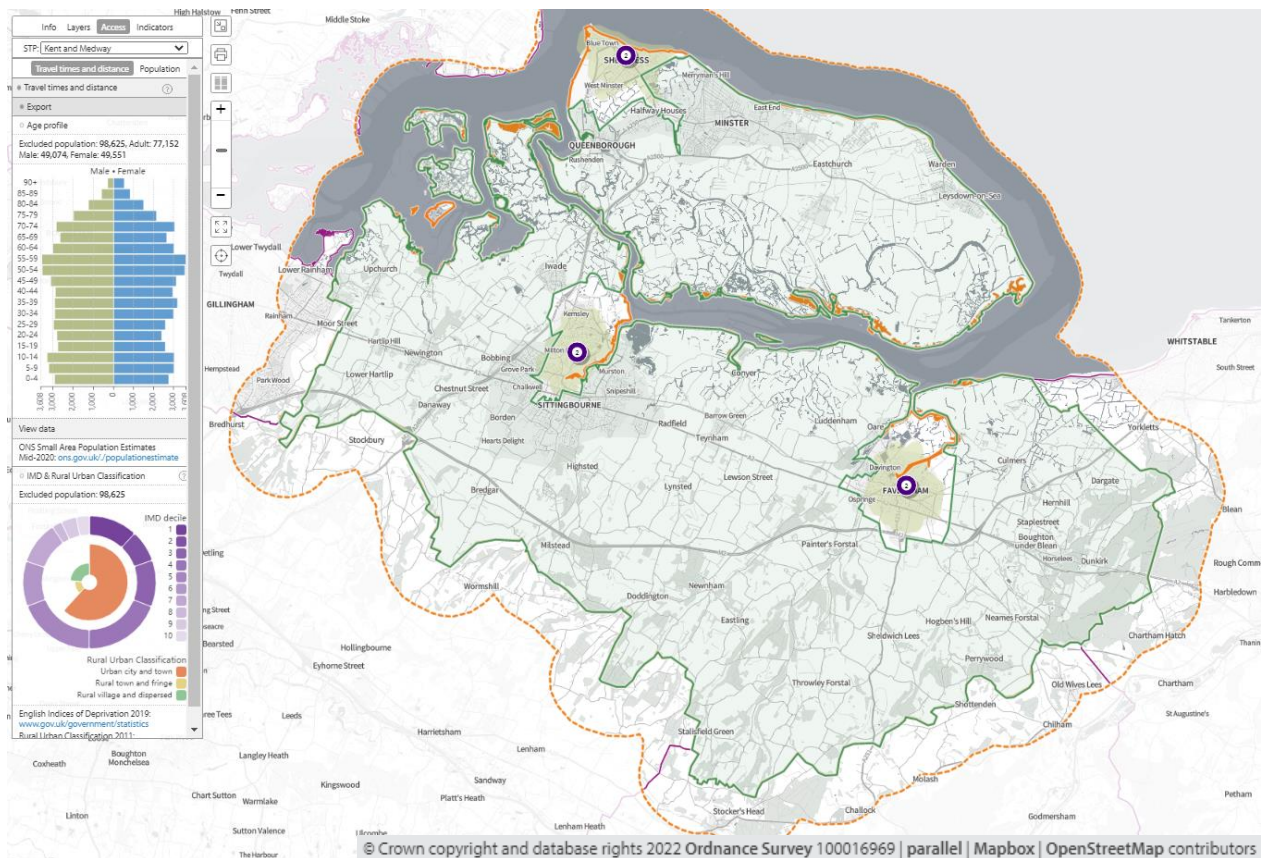
In **map 159**, below, the green shaded areas are **within 20-minutes by public transport** of a community pharmacy on **weekdays**. 9,490 (6.3%) people are not within 20-minutes by public transport of a community pharmacy. 7.4% (2,146) of 65+ population is not within a 20-minute walk of a community pharmacy.

Map 159. Locations of community pharmacies and lower super output areas not within 20-minutes by public transport on weekday mornings



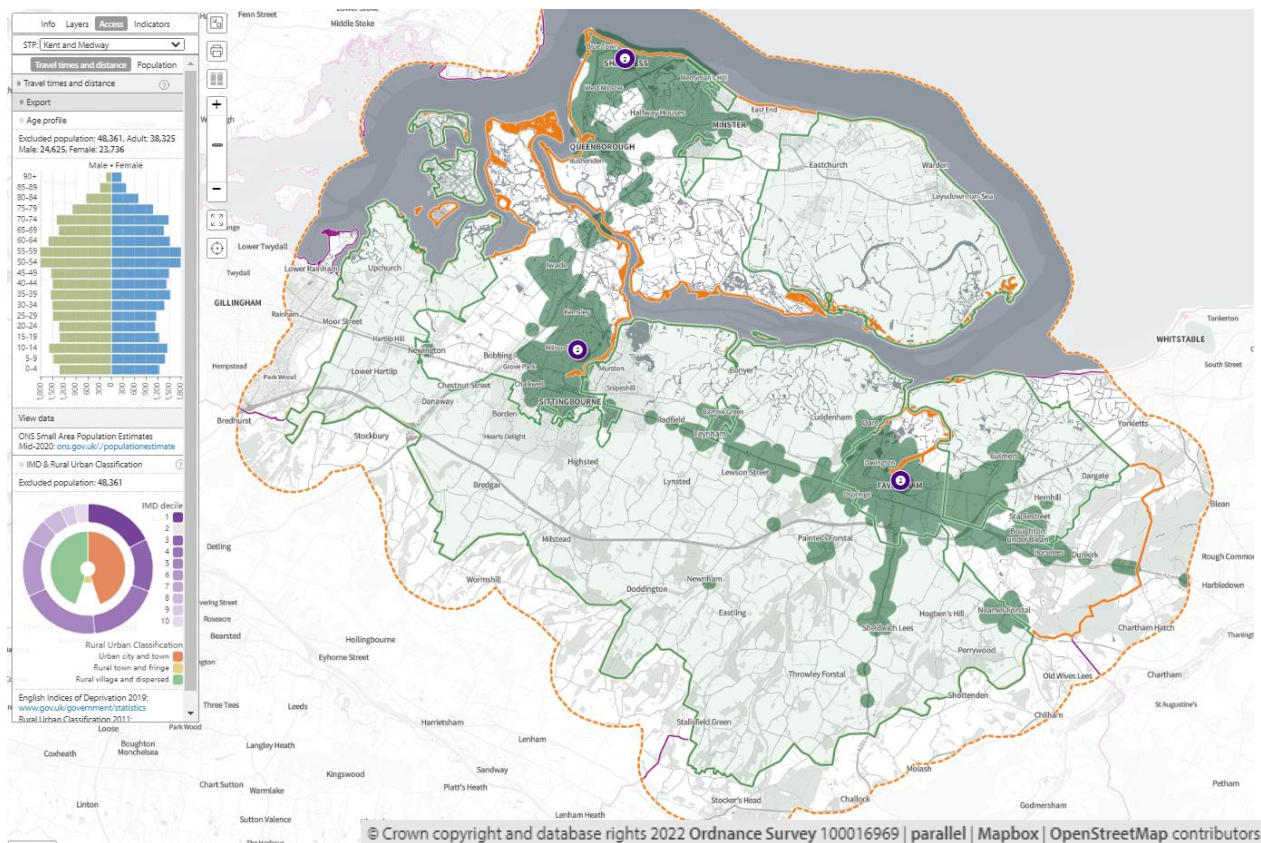
In **map 160**, below, the olive-green shaded areas are **within a 20-minute walk** of a community pharmacy that opens until at least **7pm on weekdays**. 98,625 (65.3%) people are not within a 20-minute walk of a community pharmacy that opens until at least 7pm on weekdays. 69.9% (20,173) of 65+ population is not within a 20-minute walk of a community pharmacy that opens until at least 7pm on weekdays

Map 160. Locations of community pharmacies open until at least 7pm on weekdays and lower super output areas not within a 20-minute walk



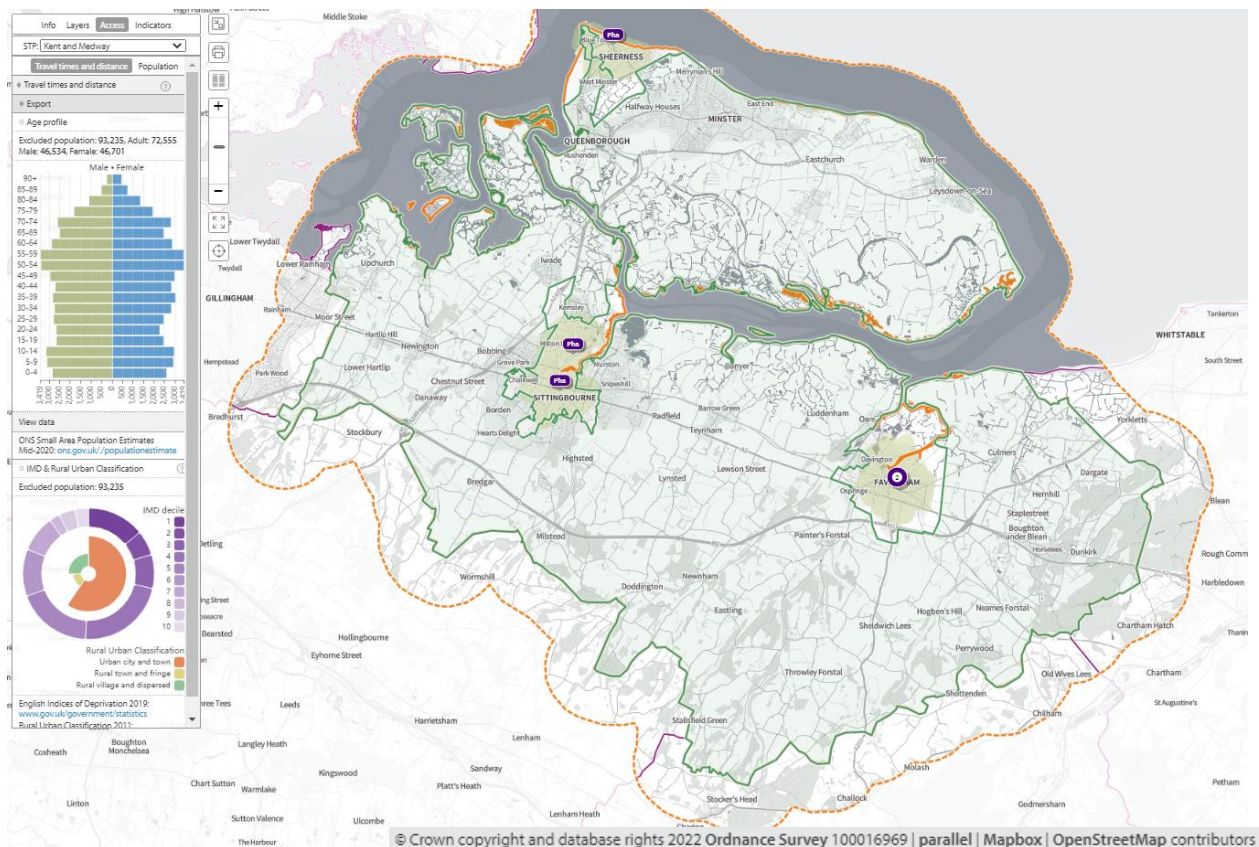
In **map 161**, below, the green shaded areas are within **20-minutes by public transport** of a community pharmacy that opens past 7pm on weekdays. 48,361 (32%) people are not within 20-minutes by public transport that opens past 7pm on weekdays. 34.8% (10,024) of 65+ population is not within 20 minutes by public transport of a community pharmacy that opens past 7pm on weekdays

Map 161. Locations of community pharmacies open until at least 7pm and lower super output areas not within 20-minutes by public transport on weekday evenings



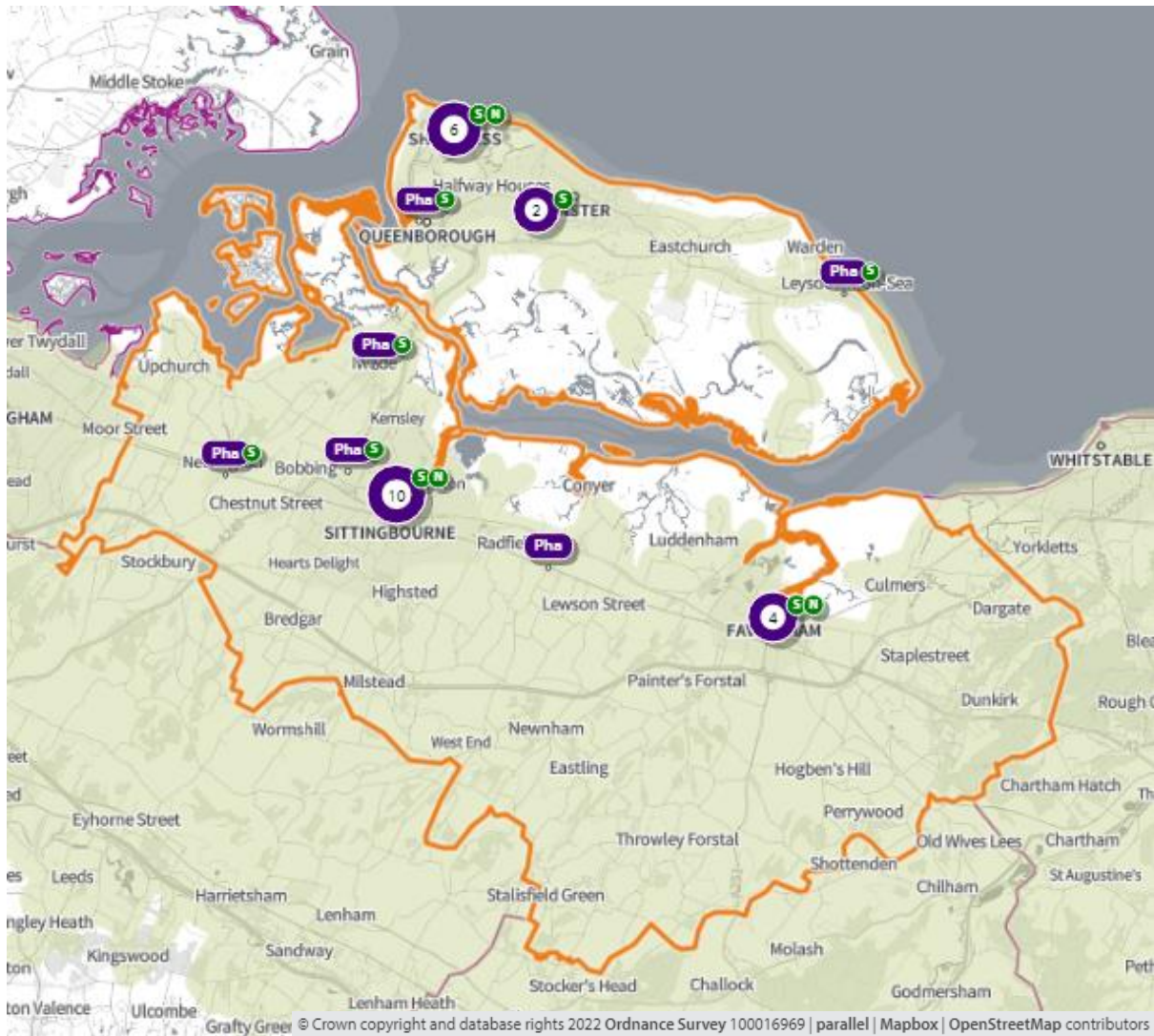
In **map 162**, below, the olive-green shaded areas are **within a 20-minute walk** of a community pharmacy that **opens on Sundays** 61.7% (93,235) of the population is not within a 20 minute walk of a community pharmacy that opens on Sundays. 63.7% (18,375) of 65+ population is not within a 20-minute walk of a community pharmacy that opens on Sundays

Map 162. Locations of community pharmacies open on Sundays and lower super output areas not within a 20-minute walk



In **map 163**, below, access during **core opening hours, Saturdays and Sundays** is shown. The olive-green shaded areas are within a **20-minute drive** of a community pharmacy. The entire population is within a 20-minute drive.

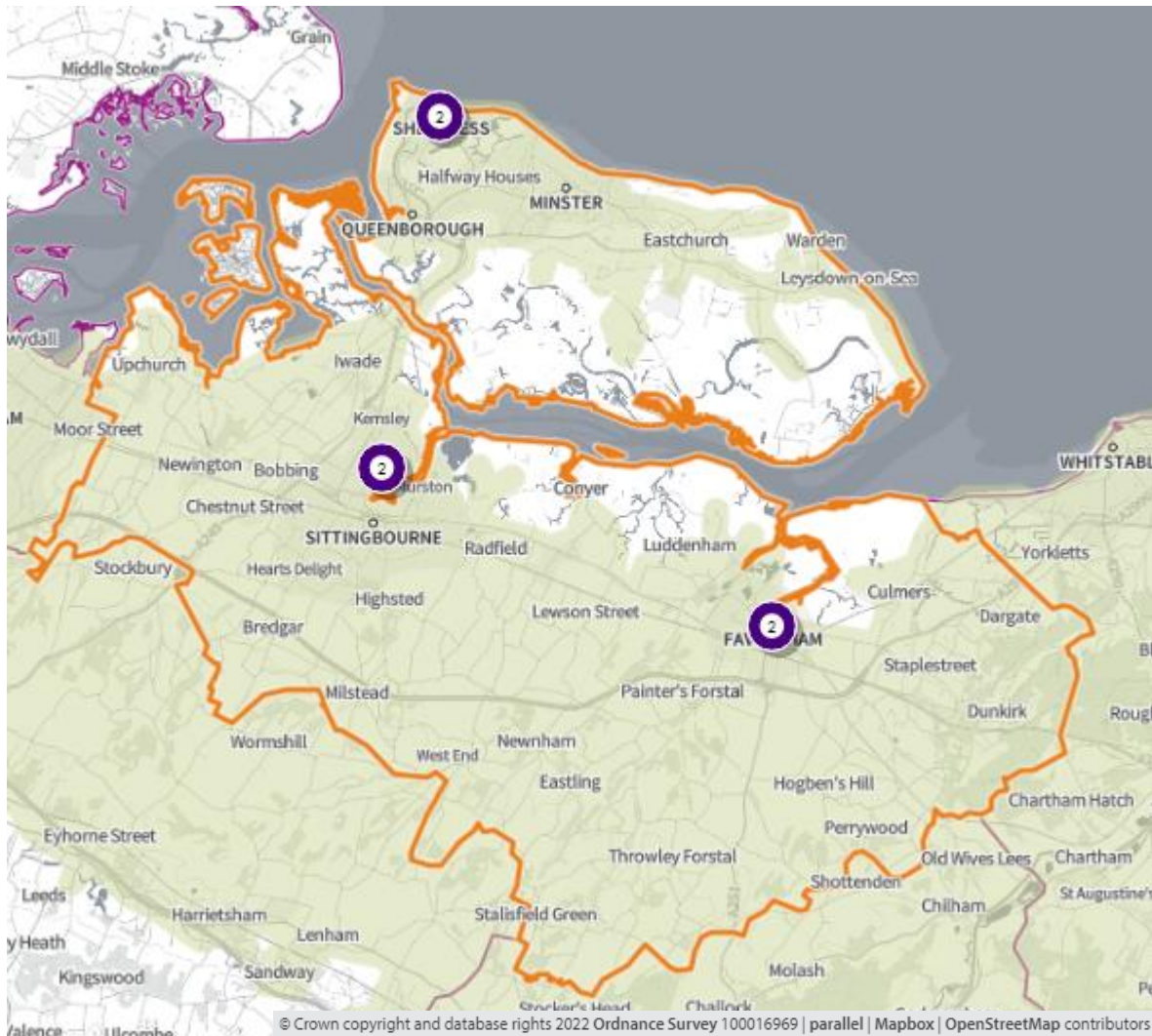
Map 163. Locations of community pharmacies and areas within 20-minutes by car



S = open Saturday N = open Sunday

In **map 164**, below, the green shaded areas are within **20-minutes by car** of a community pharmacy that opens **until at least 7pm on weekdays**. The entire population is within a 20-minute drive.

Map 164. Locations of community pharmacies open until at least 7pm on weekdays and areas within 20-minutes by car



3. Necessary services: current provision outside the localities area ⁽¹⁾

The charts below indicate the numbers of prescriptions dispensed in and out of the locality

- 2.53 million items prescribed in Swale
 - 2.33 million items dispensed in Swale
 - 2.15 million (92.6%) via Electronic Prescription Service
 - 198,896 dispensed outside of the district
 - 90,000 distance selling
 - 35,984 Dartford
 - 28,775 Canterbury

- 2.54 million items dispensed in Swale
 - 2.44 million items dispensed by community pharmacies in Swale
 - 102,352 dispensed by 15 GP practices:
 - St George’s Medical Centre – 60,766
 - Memorial Medical Centre – 6,310
 - 210,268 items prescribed outside borough i.e. more coming in than going out

Some residents choose to access contractors outside both the locality and the Health and Wellbeing Board’s area in order to access services:

- Offered by dispensing appliance contractors
- Offered by distance selling premises
- Which are located near to where they work, shop or visit for leisure or other purposes.

Taking into account this choice of pharmacy outside of the locality, the majority of residents can access a pharmacy and do access pharmacy services within the locality.

4. Other relevant services: current provision

The following advanced services were delivered by pharmacies in the Swale locality in 2020/21.

Table 58. Number of pharmacies providing advanced services

Advanced service name	No. of pharmacies
New Medicine Service	22
Appliance Use Review	0
Hypertension Service [‡]	24
Stoma Appliance Customisation	0
Community Pharmacist Consultation Service (CPCS) [‡]	22
Hepatitis C Antibody Testing Service	0
Seasonal Influenza Vaccination Advances Service	24
Covid Vaccination Service*	0
Covid Home Delivery Service*	21
Covid lateral flow device distribution*	30

*Specific to the Covid-19 pandemic

[‡]Services introduced during the year of study

Please note that three services were specific to the Covid-19 pandemic (Covid vaccination, homedelivery and lateral flow device distribution services) and that others were new services (CPCS, Hypertension service) introduced within the year. There is, however, good participation and early adoption of new services from pharmacies in this locality.

5. Other NHS services

The Strategic Health Asset Planning and Evaluation (SHAPE) web application provides the following information:

- Dr Witts Practice, Sheerness provides evening surgery 6.30pm-7.50pm on Tuesdays
- Faversham Medical Practice is open 8am-1pm on Saturdays
- Iwade Health Centre provides an evening surgery 6pm-8pm on Mondays
- Upchurch Surgery provides an evening surgery 6.30pm-7.30pm on Wednesdays
- Memorial Medical Centre is open 8pm on Mondays
- Newton Place Surgery is open 7.30am-8pm Monday-Friday
- The Chestnuts Surgery is open from 7am Monday-Friday
- The Meads Medical Practice is open until 8pm Monday-Wednesday

There is a minor injuries unit situated at Faversham Health Centre run by Faversham Medical Practice which is open daily 8am-8pm. There are two further minor injuries units situated at Sittingbourne Memorial Hospital and Sheppey Community Hospital, both open daily 9am-9pm.

There is a walk-in centre situated at Sheppey NHS Healthcare Centre which is open daily 8am-7pm.

There are also drug and alcohol services, Kent and Medway NHS Hospital Trusts and Kent and Medway NHS and Social Care Partnership Trust and Kent Community Health NHS Foundation Trust with services that generate prescriptions that are dispensed by community pharmacies in this locality.

The number of prescriptions from these services is shown below:

- 24 pharmacies dispensed a total of 8,537 (mean = 356, range = 1-2,684) items from drug and alcohol services
- All 30 pharmacies dispensed a total of 2,191 (mean = 73, range = 21-240) items from Kent and Medway NHS and Social Care Partnership Trust (secondary mental health services)
- 23 pharmacies dispensed a total of 92 items (mean = 4, range = 1-15) from KCHFT
- All 30 pharmacies dispensed a total of 22,228 items (mean = 741, range = 1-1,575) from Kent and Medway hospitals

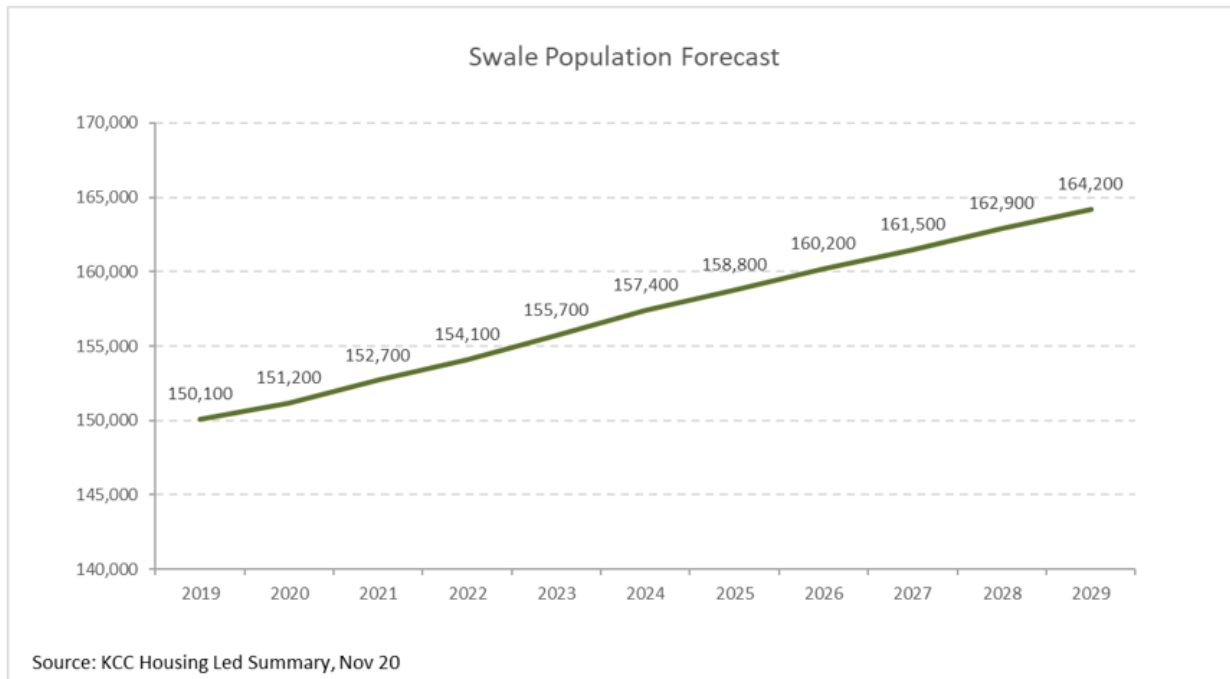
6. Choice with regard to obtaining pharmaceutical; services

As can be seen from section 2 and 3, those living within the locality and registered with one of the GP practices generally choose to access one of the pharmacies in the locality in order to have their prescriptions dispensed or, if eligible, to be dispensed to by their practice. Those that look outside the locality usually do so either to access a neighbouring pharmacy, or a dispensing appliance contractor or distance selling premises outside of the Health and Wellbeing Board's area.

7. Developments

Figure 43 below shows the predicted increase in the population of the Swale locality continuing to grow over the lifetime of this PNA.

Figure 43 Swale population forecast



 **1 pharmacy per 5,881 people in 2025**

The population of Swale district is projected to increase by 5% to 158,800 in 2025. This is an increase of 400 people per pharmacy from 2020. As stated in the community pharmacy contracts survey the pharmacies in the Swale locality do have capacity to increase their dispensing and other services.

Map 165 below shows where there are major housing developments planned in the coming years and the table indicates the number of dwellings planned for each site. With an average of 2.4 people per proposed dwelling, by 2025 these sites will provide accommodation for approximately 8,870 people.

Map 165. Location of housing developments

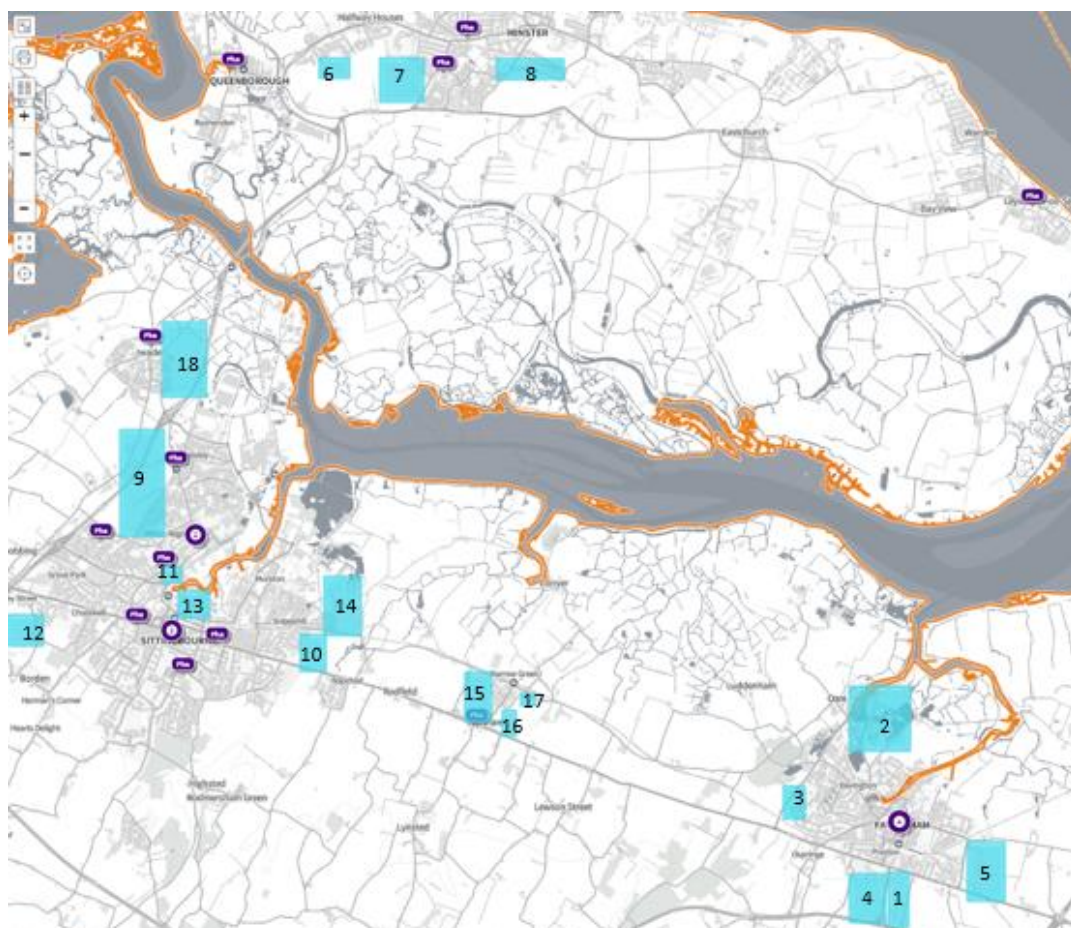


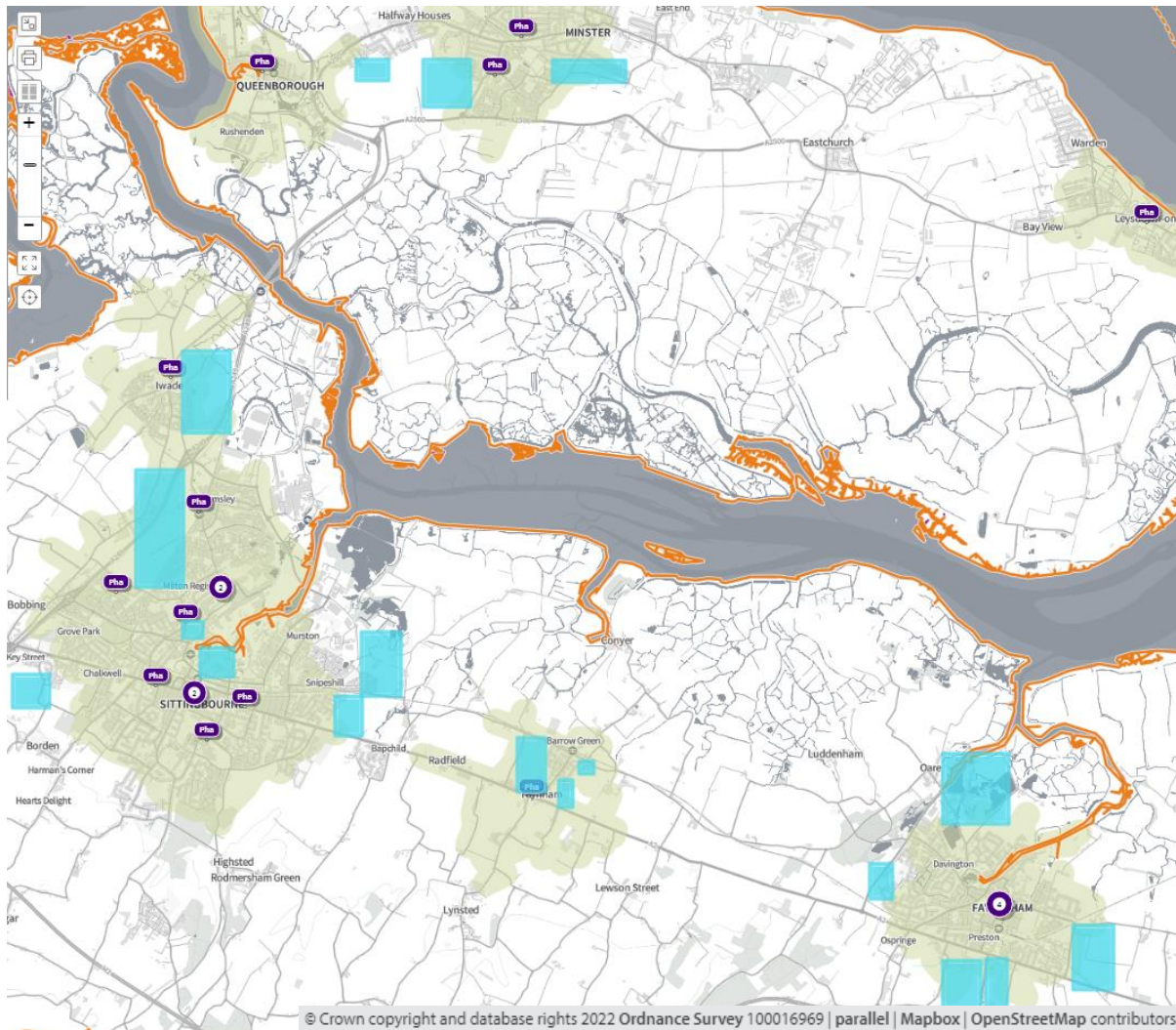
Table 59. Proposed housing developments – number of dwellings per year at each development

Site Name	2026	Site Name	2026
1. Preston Fields, Faversham	200	10. Stones Farm, Sittingbourne	390
2. Oare gravel workings, Faversham	200	11. Milton Pipes, Sittingbourne	242
3. Western Link, Faversham	197	12. South-west, Sittingbourne	200
4. Perry Court Farm, Faversham	100	13. Crown Quay Lane, Sittingbourne	180
5. Lady Dane Farm, Faversham	80	14. North-east, Sittingbourne	100
6. Belgrave Road, Halfway	153	15. Frognal Lane, Teynham	300
7. Barton Hill Drive, Minster	200	16. Station Road, Teynham	46
8. Thistle Hill, Minster	328	17. Barrow Green Farm, Teynham	30
9. North-west, Sittingbourne	450	18. Iwade expansion	300

In the following maps access, with 20 minutes by walking, public transport and driving from these new developments to community pharmacies is shown in the following maps. The maps shown access on different days and times of the week.

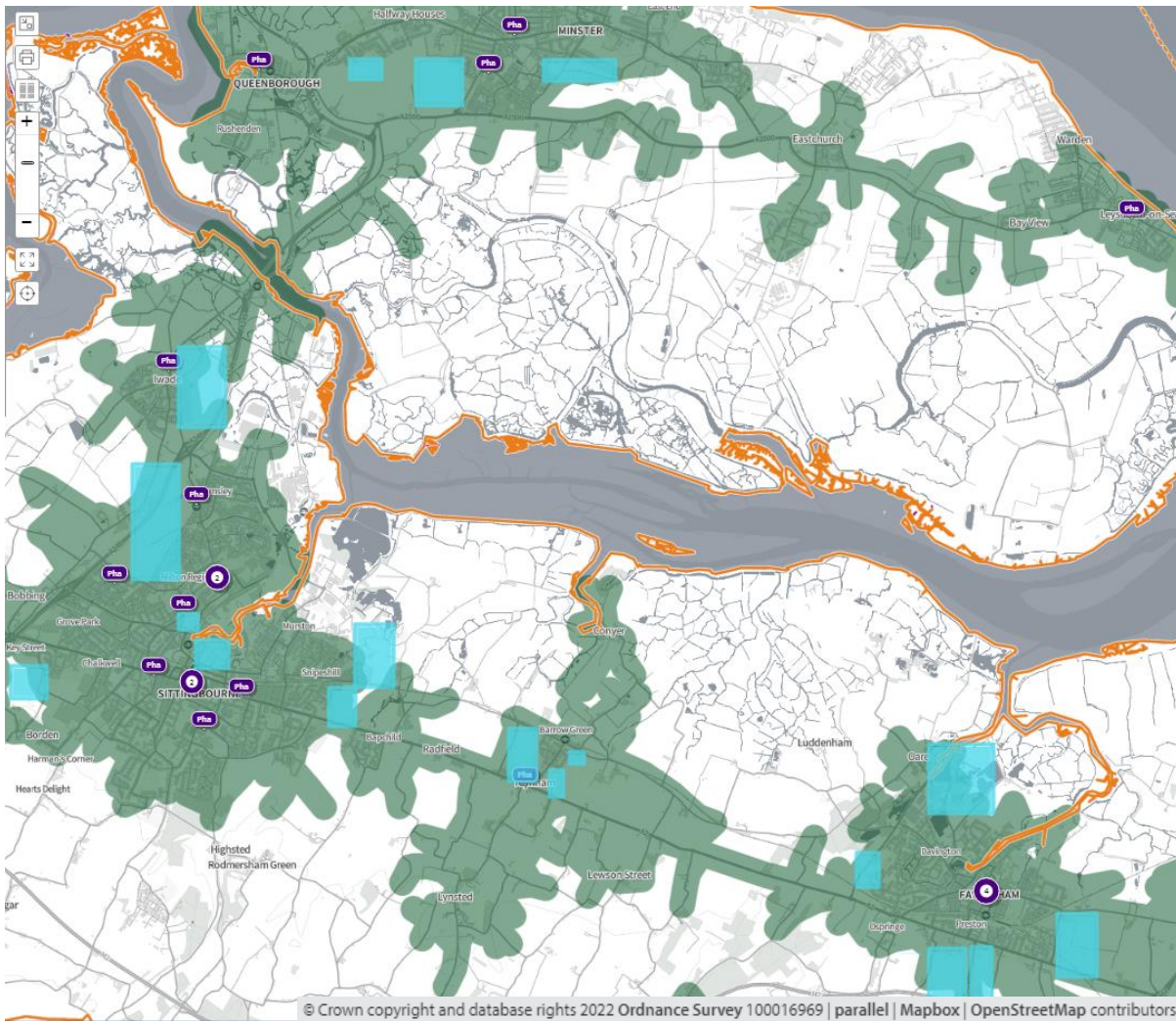
In **map 166**, below, the green shaded areas are within a **20-minute walk of a community pharmacy** and the blue shaded areas are locations of major housing developments.

Map 166. Location of community pharmacies, proposed housing developments, and areas within a 20-minute walk of a community pharmacy



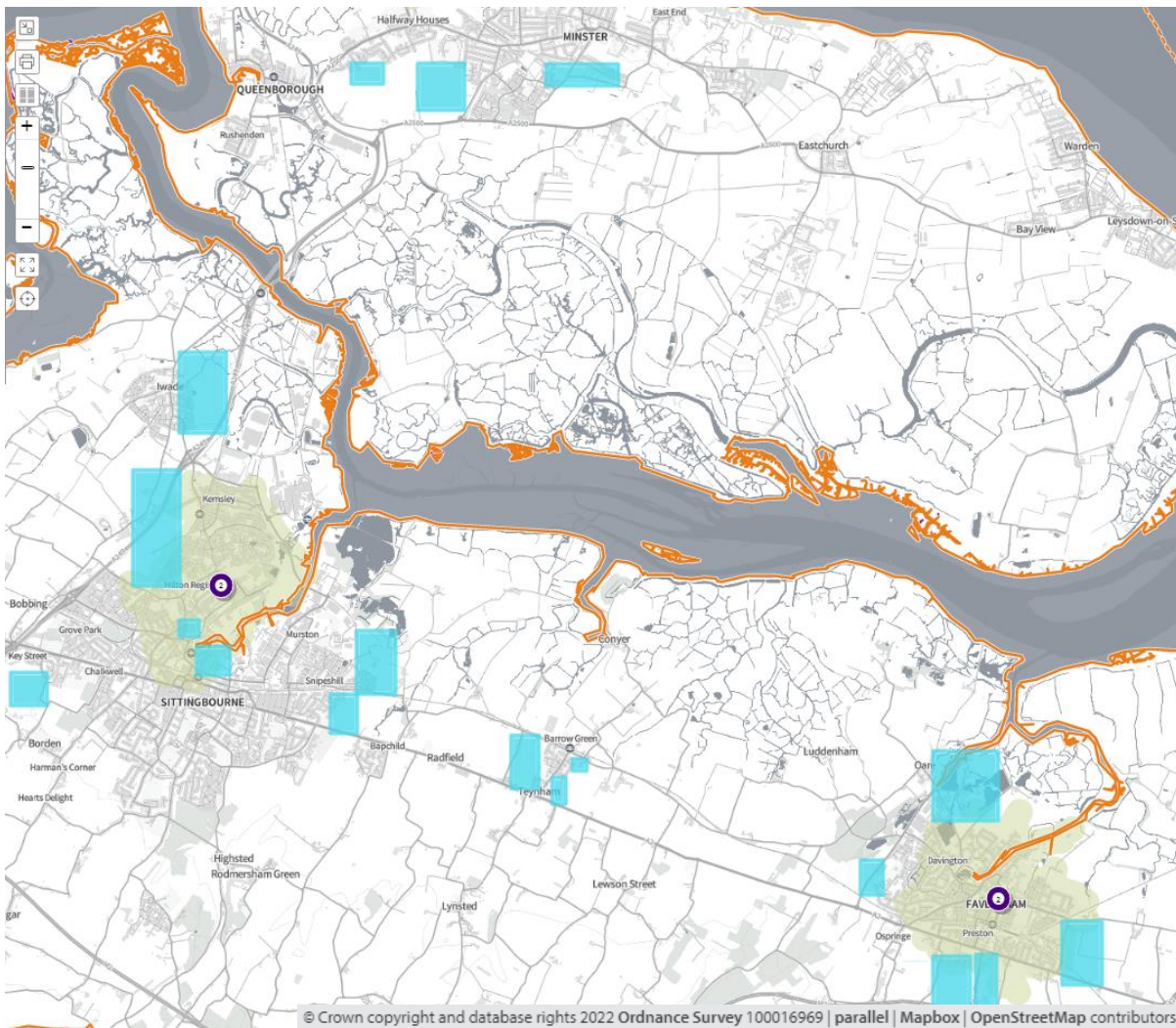
In **map 167**, below, the green shaded areas are within **20-minutes by public transport** of a community pharmacy and the blue shaded areas are locations of major housing developments.

Map 167. Location of community pharmacies, proposed housing developments, and areas within 20 minutes of a community pharmacy by public transport on weekday mornings



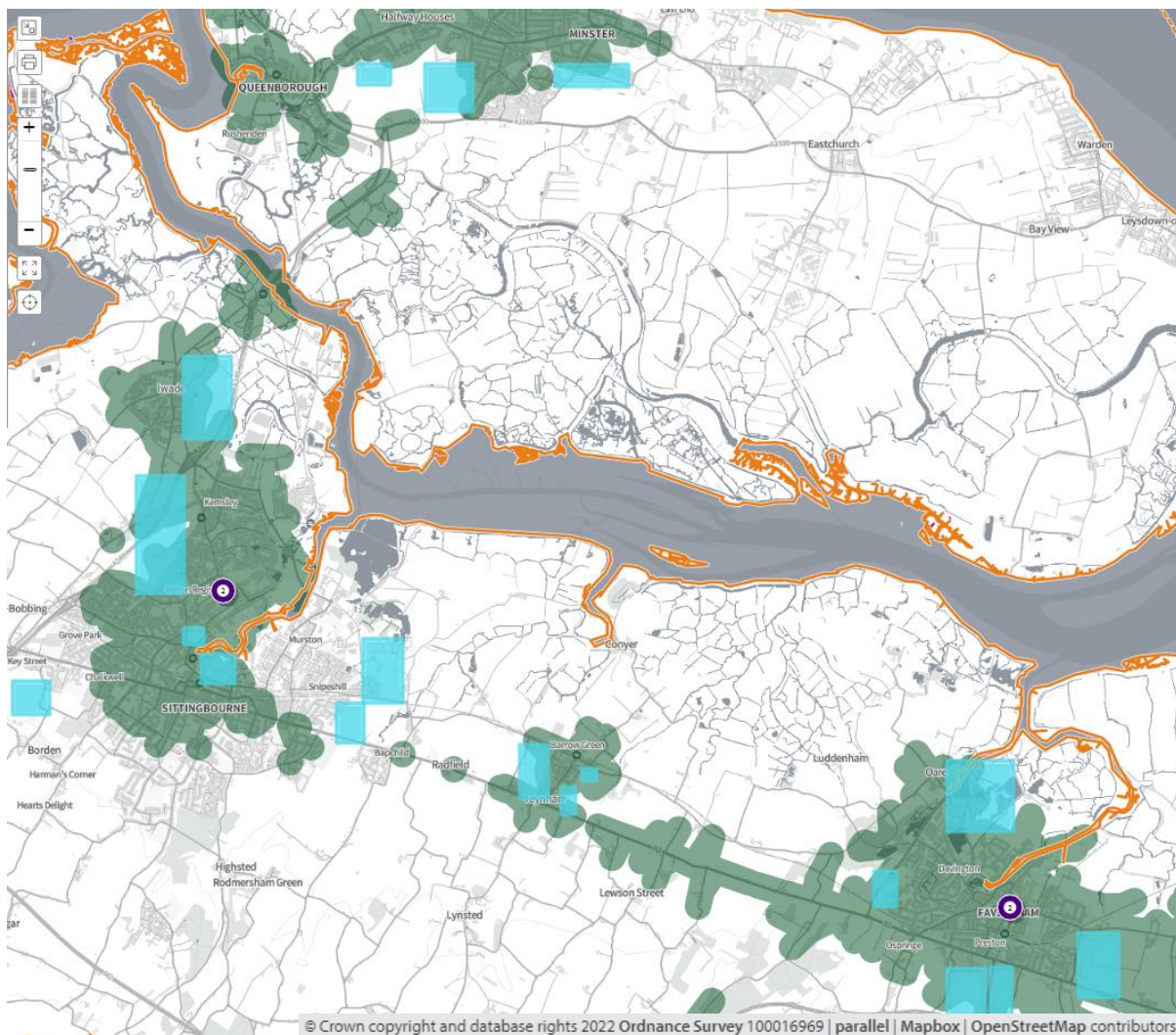
In **map 168**, below, the green shaded areas are within a **20-minute walk** of a community pharmacy that is **open until at least 7pm** and the blue shaded areas are locations of major housing developments

Map 168. Location of community pharmacies, proposed housing developments, and areas within a 20-minute walk of a community pharmacy that is open until at least 7pm on weekdays



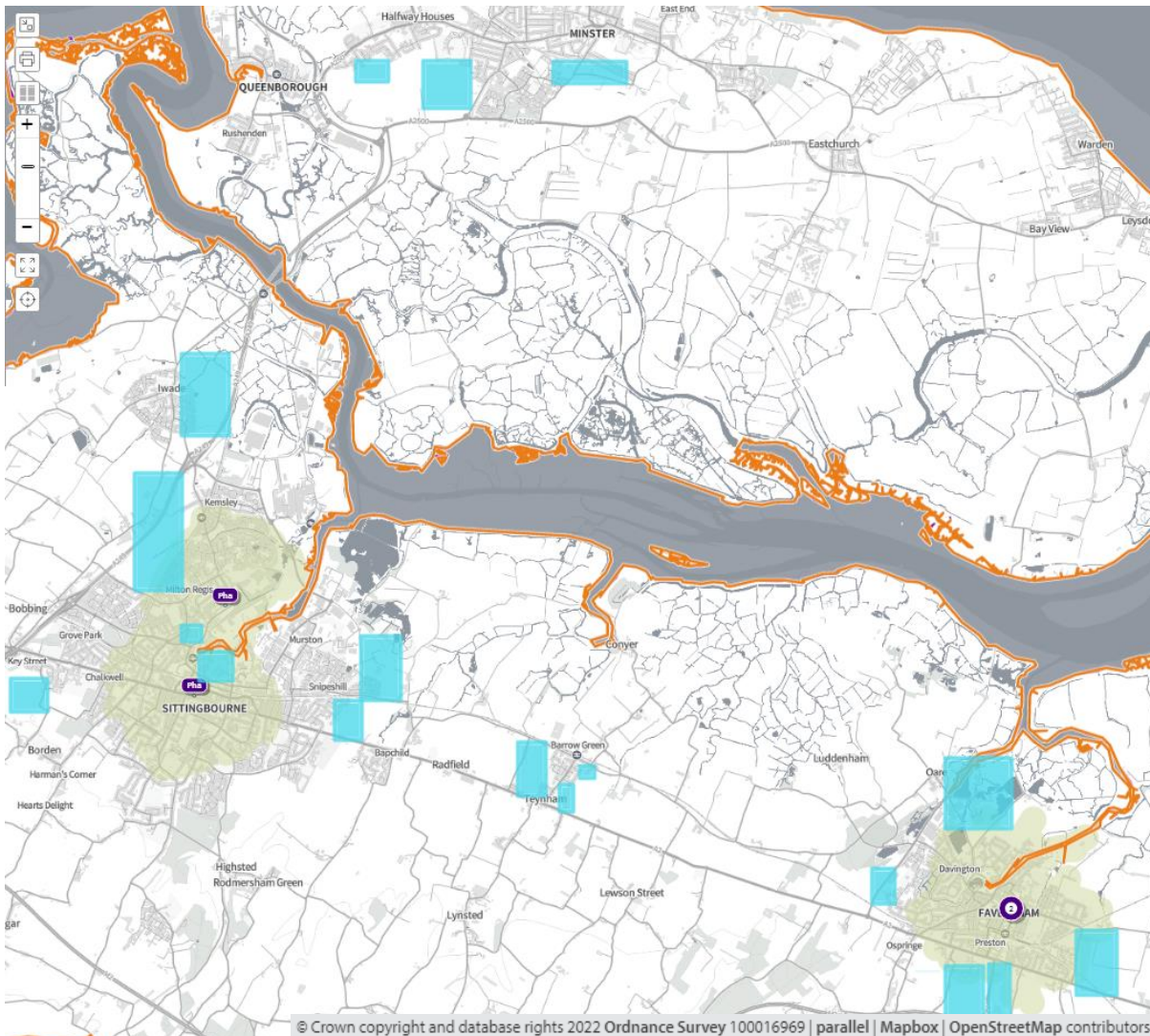
In **map 169** the green shaded areas are within **20-minutes by public transport** of a community pharmacy that is **open until at least 7pm Monday to Friday** and the blue shaded areas are locations of major housing developments.

Map 169. Locations of community pharmacies open until at least 7pm on weekdays, proposed housing developments, and areas within 20 minutes of a community pharmacy by public transport on weekday evenings



In **map 170**, below, the green shaded areas are **within 20-minutes' walk** of a community pharmacy that is open on **Sundays** and the blue shaded areas are locations of major housing developments

Map 170. Location of community pharmacies, proposed housing developments, and areas within a 20-minute walk of a community pharmacy that is open on Sundays



8. Necessary services: - Gaps in provision

There is currently good access to pharmacy services by foot, public transport, and car across the locality. The population is set to increase over the next three years, but the information shows that good access will still be present. All 14 pharmacies that responded to the contractor survey indicated that they had capacity to increase both dispensing and other services. No gaps were identified.

9. Improvements or better access: Gaps in provision

No gaps were identified.